



ISSUE NO. 84 MAY 2017

FREE

For the Mia Mia- Redesdale Region including:
• Heathcote • Derrinal • Glenhope • Baynton • Sdonia
• Barfold • Langley • Sutton Grange • Elphinstone • Kyneton

BRIDGE CONNECTION COMMUNITY NEWSPAPER



facebook.com/RedesdaleMiaMia

**Congratulations to our 2017 Heathcote
Scholarship recipient Nicholas Tobin!**

Heathcote & District
Community Bank® Branch



Bendigo Bank

bendigobank.com.au/heathcote



Bendigo and Adelaide Bank Limited, ABN 11068049178 AFSL/Australian Credit Licence 237879. S48951-10

LOCAL STUD REIGNS SUPREME

Local Merino stud Eilan Donan operated by the Macrae family at Elphinstone was successful recently at the Balmoral show in western Victoria by securing the supreme merino award. The exhibit ED 5145 was a rising 2yr ram from the fine wool classes. Studmaster Jock MacRae said the ram is an outstanding animal and "certainly the best ram I've ever produced". The ED5145 will compete at the Australian Sheep and wool show in Bendigo in July. Good luck, Jock!



Kyneton Toyota



TOYOTA

"We are Proud to support
Bridge Connection
& the local Macedon Ranges Community"

JUST OFF THE FREEWAY!

"Proud to have LOCALS in the
Drivers Seat"



Oh what a feeling!

kynetontoyota.com.au | 03 54 210 210

15 mins from
Melbourne
Airport.

Kepala Pet Resort

LUXURY ACCOMMODATION FOR PETS

Kepala Pet Resort provides five star luxury accommodation for a wide range of pets including cats, dogs, rabbits and guinea pigs.

We provide overnight, weekend and long term accommodation for all breeds of cats and dogs. Our friendly and experienced staff, understand the needs and expectations of both customers and their pets and therefore are dedicated to ensuring a happy, safe stay for your pet.

Kepala Pet Resort & Canine Country Club
55 Edwards Rd Diggers Rest

For more information: (03) 9740 1272

Email: info@kepala.com.au

www.kepala.com.au

Kyneton Veterinary Hospital
Where animal lovers heal
Call us today on
035422 1099
67 High street Kyneton



**KYNETON
VETERINARY
HOSPITAL**



The BRIDGE PET PALS
proudly sponsored by



Georgia and Sophie Mahony of Sutton Grange were setting up this new kennel for their beloved and elderly labrador/retriever, Molly. But they just couldn't resist getting into it themselves to test it out - quickly followed by their cheeky new german shorthaired pointer, Henry. Looks to us as though Molly will have a hard time taking possession of her new home!

Send us a picture of your very special pet and a few words to describe him or her and why you love your pet so much. Send them to bridgeconnection.editor@gmail.com

BIRD QUIZ with NIGEL HARLAND



The bird in last month's issue was the Eastern Rosella. **Congratulations to Silas Barmersheim for correctly naming it.** It is a highly colourful bird with a red head, white cheeks and greenish wings. Can be confused with a juvenile Crimson Rosella, but once seen cannot be mistaken. It nests in tree hollows, but can also be encouraged to use nesting boxes strategically arranged in your backyard – try it sometime. I'll leave you with a much smaller bird which can often be found in backyards. **Nigel**

Contact us on with your guess about which bird this is above and **WIN a \$20 book voucher** from Aesop's Attic bookshop, Kyneton. Send answers to bridgeconnection.editor@gmail.com or phone or text to: 0407 116 899



Editorial

Hello Everyone,

This is a bumper issue of BC as some important developments in the planning for upgrades for the Redesdale "hub" or "precinct" have occurred and the business case executive summary has been printed as a pull-out middle section. There will soon be a community meeting to drive the next important stage.

We have heeded your feedback and upgraded the Redesdale and Mia Mia contact list so that it is easier to read - page 20. Please note that we won't be putting this in again for a few more months so we suggest you cut it out and stick it on the fridge.

A reader has suggested that our recipes should reflect gluts in harvest so we have a zucchini recipe for you this week and have added Anzac biscuits because of the time of the year.

We trust you are enjoying this brilliant autumn and the great rainfall we are having.



Regina Bennett



Kathy Hall

Co-Editors

Kathy Hall

Regina Bennett

Ph: 0407116 899

e: bridgeconnection.editor@gmail.com

Proudly printed in Kyneton

Castlemaine, Kyneton & Gisborne
CopyCentre
Printing together for our community

Design & Pre-press
Plan Scanning, Finishing Services.

*Not just a Copy Centre...
we are so much more.*



www.windarring.org.au

58 Mollison Street
Kyneton
03 5422 2400

CONTENTS

Regular articles	Page	Special articles	Page
Advertising rates	22	Anzac Day at Sutton Gange	21
Bird Quiz	2	Kerry Anderson	10
Bridge Abroad	27	Our Pub	17
Bridge Connection Contacts	26	Redesdale Precinct Business Case	13 - 16
CFA News	24 - 25	Redesdale Precinct Planning	5
Church Services	12	Redesdale Precinct next stage	7
Dr Tim	17	Sesquicentenary planning	23
Editorial	3	The Munro Letters	4
Farmers' markets	9	Website upgrade	23
Garden Patch	14 & 15		
Hall Happenings	10		
Langley Primary School	17	Notices	
Letters to Editors	11	Sutton Grange Revellers	10
Local Contact List	27	Redesdale Social Club - Karaoke	11
Pet Pals	2	Party Equipment	11
Politics	8 & 9	Redesdale Revellers	23
Quote of the month	8	Bootcamp	27
Rainfall	12		
Recipe of the month	22		
Redesdale- Mia Mia P. School	6		
RRRC Chairman's report	21		
Subscription	26		
What's on in Heathcote	7		



DEADLINE
20th of each month

Redesdale Hall FOR HIRE

Ammentities are available for catering, meetings, weddings and club or family celebrations.

Please phone

Carolyn (03) 5425 3194 for more information.

Redesdale Hall Activities:

- 1st Monday monthly, 10am or 4.15pm, Bridge Connection Committee meeting
- 2nd Tuesday monthly, 1pm - Hall Comm. Meetings.
- 2nd Tuesday monthly, 7 pm - Rec. Reserve Meetings.

Roaster for Hire

Commercial sized roaster available for hire from the Redesdale and District Association.

\$75 for members and \$100 for non-members.

(Free hire to Hall, Rec. Reserve Committee, and CFA)

Phone **0418 130 206.**



THE MUNRO LETTERS



Episode 3

We continue our letter from David Munro to brother Alex in Scotland. It was written on the 17th August 1848.

The very day after my arrival, I had the good luck to meet Henry. I had learnt that his station was upwards of 70 miles from Melbourne and was meditating how I was going to reach it when someone whom I thought I knew passed in front of the garden belonging to a cottage in which I happened to be. It was not at all surprising that he should not know me, but one of his first exclamations amused me much – “Why confound it, I was looking for a little dumpy chap!”

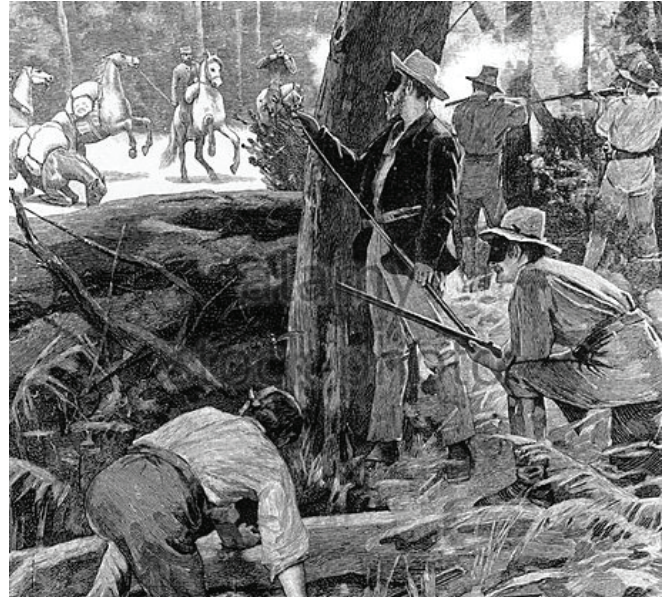
A messenger was immediately dispatched to his station to bring down a horse for me and I proceeded to make preparations for accompanying him to the bush. In four days my nag arrived and after giving it a days rest to refresh itself, we started. My equipment I fancy would have made a considerable sensation in Princes Street. My horse in the first place, though well shaped and sure footed had no more grooming than given to it by the wind and the rain. Its mane was like a lion's and it had an abundant crop of hair at its fetlocks. The accouterments were a first rate saddle with holsters in front and a valise and a mackintosh behind. At one side was a rifle, its muzzle resting in a leather boot. There was a tether rope some 50 yards long coiled around the horse's neck for the purpose of securing him while he is grazing at night.

As to the rider, in hunting coat and straw hat with trousers strapped with leather or moleskin and his heels armed with spurs. He mounts into his seat and presents altogether a formidable and picturesque appearance. A short clay pipe called a “cutty” is generally and essential companion on the journey and is fashionably worn in the hatband. A pipe, however, that has been long smoked and well coloured as the pheasant is, acquires a most extraordi-

nary, and like so many other things in the Colony, fictitious value. I have heard of £5 having been refused for such a pipe, and have seen them carried around in silver cases of a pattern similar to tin ones which can be found at home in the pockets of coal heavers and cab-men.

If the proposed journey is a long one a couple of tin quart pots are commonly carried suspended at the saddle bow and a small quantity of tea and sugar; with these and a box of Lucifer matches, the traveller, wherever he finds water, can make himself a refreshing and most grateful beverage. For some time after my arrival in the colony I was not fond of tea in this garb, but custom and especially travelling in hot weather soon taught me its value and before three months had passed, I was so fond of it that I do not think I would have bartered my tin pot of tea against a bottle of champagne.

Pistols are seldom carried or indeed any fire arms excepting in those parts of the country where the hostility of the natives may be apprehended. Against bush rangers they are unavailing; the villains manage matters too well to expose themselves. They are generally ensconced behind trees in some thick wood with their guns leveled upon their intended victim as he is on the point of passing. They callout to him to stand and deliver, and if he makes a motion with his hand towards his holsters the probability is that he will be shot.



Australian bushrangers evading capture by police about 1865.

The best plan is to carry very little money about you and to submit with as good a grace as possible to the loss of your horse and very likely the greater part of your clothes; there being nothing for it but to console yourself with the reflection of Jacob Faithful “that as it can't be helped so its no use crying”. My rifle was slung by my side for the purpose of sport on the chance of a shot at a kangaroo or emu, but my holsters which looked excessively ferocious were in fact of a most pacific character and instead of carrying the “peacemaker of the Irish” were charged with brown paper parcels of marrow fat and Prussian blue pease and the most approved cabbage seeds etc. One fine afternoon we started and everything was much to my satisfaction. The season of the year was perhaps the most beautiful in Australia, and the country was very verdant and had what the Germans call a friendly appearance, and the neighbourhood of Melbourne at least towards the north is indeed like a large park. In places it is too densely wooded for this, but the ground is turf and the trees are at such distances that you may gallop along with safety.

Next month: The great majority of the trees are what the colonists call white gum...



National Museum of Australia “A halt while the billy boils”

Redesdale Precinct Planning

Readers will see that Bridge Connection has published the executive summary of the "Redesdale Community Precinct Business Case" in the middle pages of this paper. The actual document, produced by Street Ryan at the behest of the City of Greater Bendigo (CoGB) is 56 pages long but may be acquired through CoGB in hard copy or electronically by emailing info@redesdale.net or by accessing from the redesdale.net website. The District Association also has hard copies; call 0407 116 899).

How did we get to this point? It all started with the Community Plan which was developed in 2013 following community meetings. Then followed a feasibility study into the practicability of the changes and developments desired by the community. "Key Communicators" were elected by the community to liaise with committees and residents.

The feasibility study was completed in July 2015 and its recommendation was that the Redesdale community should press on with the changes it wanted but that there would obviously be a considerable investment involved. The main thrust of the changes were improvements to the hall, especially the kitchen and toilets, provision of office space for businesses and outreach medical services provision of ensuite caravan facilities. The cost of such improvements was estimated at the time to be approximately \$550,000.

Given the cost and the need for substantial assistance with funding, particularly through Regional Development, Victoria, a project to produce a "Business Case" was funded by CoGB and was completed by Wayne Street from Street Ryan which is a long established consulting business focused on collaboration, diversification and value adding throughout regional Australia. During the production of the business case, the Key Communicators were in regular contact with Wayne Street and there were a number of fruitful meetings.

The executive summary (starting on page 13) is the result of this long business case process. The next stage is to produce a working group who will commission designs and plans which will then be ready to present to funding bodies.

It has been a long gestation period and we are not there yet, but the recent allocation of funding for the design stage by CoGB (see page 7) has reinvigorated those involved with the process.

It really **is** going to happen!

Kathy Hall



QUALITY FARM SHEDS

Machinery
Hay Sheds
Stock Shelters
Shearing Sheds

Barns
Horse Arenas
Workshops
Garages

Building Quality Farm Sheds since 1975

CENTRAL
steelbuild

T/A Central Vic Sheds

1300 955 608

8 Hoyle Court, Kyneton



Bendigo
Travel & Cruise Centre

336 HARGREAVES ST. BENDIGO
www.bendigotravelandcruise.com.au

03 5441 8811

Find us on 

creative
designs
for your
business

logos menus flyers posters
invitations brochures magazines
business cards advertisements
letterheads with compliment slips
full business imaging

lyn ingles | graphic designer
blupen@ncable.net.au
0429 911 980

Sponsoring the 'Bridge Connection'

blue
blue pencil publishing



Redesdale-Mia Mia Primary School

Respect, Responsibility and Resilience

Principal - Joe Sebire

Phone - 5425 3155; Email - redesdale.mia.mia.ps@edumail.vic.gov.au

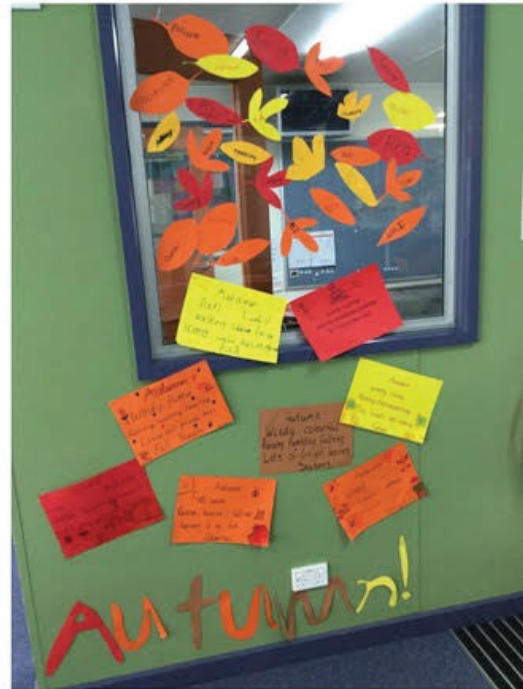
Meet our language assistant Sopi

This year we have a shared language assistant (with Kyneton Secondary College) from Indonesia. Sopi is studying for the equivalent of our Masters of Education. Sopi attends every Monday with Bu Mac from Kyneton Secondary College.



Autumn Poems

We have been writing poems every week. Here are our Autumn poems that we edited and published.



Swimming

We have been travelling to the Kyneton pool for our swimming lessons. Besides learning to swim we learn all about water safety. How to attract attention if we get into trouble in the water and how to save someone.



ANZAC Day

We had our ANZAC day service with a visit from members of the Kyneton RSL. Here is David showing students a Victorian Cross and what they are awarded for.



Council budgets \$60,000 for Redesdale Precinct next stage

In mid April, Redesdale received two visits from the recently elected Eppalock Ward Councillors. On Wednesday April 12th, Mayor Marg O'Rourke and Councillors Wrigglesworth and Flack joined a crowd of community members at the Rural Cafe to talk about future directions for the township. Then on April 20th, following the Redesdale and District Association meeting, the Mayor and Cr. Wrigglesworth came to the primary school to meet with the committee and with other community members. The councillors admired the projects evident at the school as well as the Sesquicentenary Quilt which is a work in progress based at the school.

Community members were delighted to hear that \$60,000 had been allocated to the next stage of the Redesdale Precinct development which will allow for detailed plans and designs. There was a real sense that the City of Greater Bendigo is behind our township and the Councillors commented that it was uplifting to work with such an enthusiastic, eager and confident community. There are exciting times ahead!

LANGLEY PRIMARY SCHOOL

Growing and Learning Together

Only 10 kms from Kyneton

OPEN DAY – WED. MAY 24
10 AM - 12 NOON



Call in for a viewing of our great school. We offer a comprehensive curriculum with many extra-curricular activities and offer engaging programs for all students.

RSD 38 Redesdale Rd, Langley

PH: 5423 4125

Principal: Jo MacKintosh
www.langleyps.vic.gov.au

KN224500/K



Saturday 6th May 2017

Groovin' The Moo Bendigo – Buses running from Heathcote. For booking information please go to the website www.bendigotourism.com/tours/bendigo/comet-tours-heathcote-return-transport-to-groovin-the-moo

Redesdale Revellers 2017 - Time: 7pm for a 7:30pm start. Cost: \$42:50 per head BYO. Three course meal, fun entertainment. Bookings ring Dorothea on 5425 3118 Venue: Redesdale Hall Redesdale

Saturday 13th May 2017

Redesdale Revellers 2017 - Time: 7pm for a 7:30pm start. Cost: \$42:50 per head BYO. Three course meal, fun entertainment. Bookings ring Dorothea on 5425 3118 Venue: Redesdale Hall Redesdale

Wednesday 17th May 2017

The Australian Hearing Bus in Heathcote - Time: 10am-3pm. All adults are welcome to come to hop aboard for a free hearing check, no appointment necessary, just come along on the day. Contact phone -54451400 or website: www.hearing.com.au

Venue: Outside Heathcote Visitor Information Centre Cnr High & Barrack St Heathcote

Saturday 20th May 2017

Heathcote RSL presents **The Inaugural Heathcote Community Black Tie Ball** – Time: 6pm for 6.30pm, 3 Course Dinner, and 6 piece Jazz Ensemble (band is Australian Army Band of Melbourne). Tickets: \$35 per person. Secure your tickets by calling 0419 561 360. This is a licensed formal event Venue: Heathcote RSL Hall High St Heathcote

Red Engine Room presents Mauricio Carrasco- Chilean/Australia guitarist will present the integral cycle of Suits for Lute transcribed for guitar by J.S. Bach. Tickets can be purchased from Heathcote Visitor Centre on online www.gotix.com.au Limited Bookings. Venue: to Be Confirmed Time: 5pm.

Redesdale Revellers 2017 - Time: 7pm for a 7:30pm start. Cost: \$42:50 per head BYO. Three course meal, fun entertainment. Bookings ring Dorothea on 5425 3118 Venue: Redesdale Hall Redesdale

Saturday 27th May 2017

Redesdale Revellers 2017 - Time: 7pm for a 7:30pm start. Cost: \$42:50 per head BYO. Three course meal, fun entertainment. Bookings ring Dorothea on 5425 3118 Venue: Redesdale Hall Redesdale

Coming Events – Save the date

Saturday 3rd June and 10th June 2017

Redesdale Revellers 2017 - Time: 7pm for a 7:30pm start. Cost: \$42:50 per head BYO. Three course meal, fun entertainment. Bookings ring Dorothea on 5425 3118 Venue: Redesdale Hall Redesdale

Queen's Birthday weekend- Heathcote on Show- More info later Sunday 11th June 2017

Queen's Birthday weekend- Heathcote on Show- More info later Monday 12th June 2017

Queen's Birthday weekend- Heathcote on Show- More info later

Steph Ryan MP

Member for Euroa

2/55 Carrier Street, Benalla VIC 3672
www.stephryan.com.au
03 5762 2100

This publication was funded through Parliament's Electorate Office and Communications budget.



The Liberal and Nationals’ plan to tackle crime

The Nationals in coalition with the Liberals will take a tough approach on crime if elected next year.

Member for Euroa and Deputy Leader of The Nationals Steph Ryan said Victorians should feel safe in their homes, but after two years of Labor the state’s crime rate has skyrocketed by 20 per cent.

In Greater Bendigo the crime rate has risen a whopping 24.93 per cent since Labor took the reins of government in 2014.

Ms Ryan said it was clear a different approach was needed and the Coalition had a clear plan to tackle crime.

“Rather than more of the same soft on crime approach, an elected Liberal Nationals government would take a tough approach and introduce mandatory minimum jail sentences for the most dangerous offenders in our community,” Ms Ryan said.

“Violent repeat offenders shouldn’t be getting second, third and fourth chances to commit violent crimes - no more excuses, no more second chances, its two strikes and you’re in.”

The minimum sentences would apply to 11 violent offences, including rape, aggravated burglary, manslaughter by single punch or strike, and murder.

Ms Ryan said these changes would extend to all areas of our community.

“Perpetrators of domestic violence, who think they can ignore the lessons of earlier violent behaviour, will face long sentences for their contempt for our laws,” Ms Ryan said.

Ms Ryan said it joined a broader suite of earlier announcements by the Liberals and Nationals on bail, sentencing, police resourcing and youth justice which would be needed to make Victoria safer.

“The Andrews Labor Government is not being taken seriously on law and order issues,” Ms Ryan said.

“In addition to sentences that better reflect community standards, the Liberals and Nationals will deny parole to convicted murders who refuse to disclose the location of their victims, we will reinstate Neighbourhood Watch funding, introduce new car-jacking offences and abolish cash payment for scrap metal.

“We will name and shame repeat violent offenders, expose the juvenile criminal history of violent adult offenders and we will put victims of crime first.

“This includes providing victims of crime access to criminal’s superannuation as part of compensation.”

**BIG THANK YOU
TO OUR
REGULAR SPONSORS**

BLUE PENCIL PUBLISHING

KYNETON VET HOSPITAL

KYNETON COPY CENTRE

BENDIGO TRAVEL AND CRUISE

ELPHINSTONE GENERAL STORE

REDESDALE GENERAL STORE

Quote of the month:

“ Those who stand for nothing, fall for anything”

Alexander Hamilton

Todd PROPERTY

**Real Estate Sales
& Property Management
with Service.**



Brad Todd
Director



Barb Walker
Sales Consultant



Kristy Kelly
Property Consultant

“We help make dreams a reality”

5433 2288

95 High Street Heathcote



Federal Member for Bendigo

LISA CHESTERS MP

PO Box 338 Bendigo 3552
Cnr Williamson & Myers Sts, Bendigo 3550

T: 034 5443 9055 • F 03 5443 9736
E: Lisa.Chesters.MP@aph.gov.au

Twitter: @LMChesters • Facebook: /LisaChestersBendigo



Labor

Community Legal Centre Funding

Federal Member for Bendigo Lisa Chesters MP has welcomed the decision to by the Federal Government not to cut by 30% Commonwealth funding to CLCs. Every day Community legal centres (CLCs) offer free legal advice to people who cannot afford it themselves, on issues as diverse as family violence, welfare, employment and tenancy issues.

The Loddon Campaspe CLC in Bendigo has been leading the way in response to family violence with research and advocacy programs including the Will Somebody Listen to Me report, which looks at how to address gaps in the justice system for victims of family violence.

Even before the cuts, CLCs are being forced to turn 160,000 people away each year due to overcapacity issues.

Call to lift Medicare GP Rebate freeze

Lisa Chesters MP is calling on the Federal Government to increase the Medicare rebate to GPs in the May Federal budget. The Medicare rebate freeze has seen the amount health care professionals receive from Medicare for appointments remain frozen until 2020.

Urgently raising the Medicare rebate is one of the key findings from the Save Medicare report, which details Central Victorians' experiences with health care.

At the hearings, GPs said the freeze was having a severe impact on the viability of their businesses, burn out of staff, reduced appointment times and higher fees for patients. Less and less places in the region are bulk billing.

Learn how to design your own sustainable garden

Join Romsey horticulturalist Kerri Mewett on Saturday 13 May for Macedon Ranges Shire Council's practical workshop on sustainable garden design.

The free event will be held from 10am–11.30am at the Romsey Community Hub, 98–100 Main Street, Romsey.

To book your place in the workshop, call 5421 9606 or email environment@mrsc.vic.gov.au

FARMERS' MARKETS

Woodend Community Farmers' Market
Sat May 6th
Cnr High & Forest Streets, Woodend
0487 444 090 Sharon Kittson

Daylesford Farmer's Market
Sat May 6th
Daylesford Primary School
03 5664 0096 Peter Arnold

Kyneton Farmers' Market
Sat May 13th
St Pauls Park, Piper Street, Kyneton
54 221 025 Veronica Manifold

Riddells Creek Farmers' Market
Sat May 20th
Riddells Creek Primary School, Riddells Creek
0408 254 626 Ali Bant

Lancefield & District Farmers' Market
Sat May 27th
Centre Plantation, High Street, Lancefield
0407 860 320 Meggs Hannes

Maldon Market
Sunday May 14th

Authentic, community based farmers' markets.
BYO bags, baskets & trolleys.
Friendly dogs welcome on a leash.
Proudly accredited with the Victorian Farmers'

CONNOLLY GLASS

- Broken Window Repairs • Mirrors
- Balustrades • Splashbacks
- Shower Screens: Framed
- Semi Frameless & Frameless
- Retro Fitted

**Double Glazing & Commercial
Window Frames & Glazing**

0428 535 101

177 Lyell Road, Redesdale. Vic. 3444

Email: chrisjen@bigpond.net.au

Small Business Challenge

by Kerry Anderson

"Can any business be ethical?" was the question texted in to ABC's Central Victoria Radio studio last year when I was chatting about rural communities and the importance of business.



Scrambling to think how to reply live on air, my heart was simultaneously sinking. Is this truly what society thinks of the business sector? Why is being successful and making a profit automatically seen as greedy and unethical?

I was reminded of this moment again recently when I noticed a social media posting proclaiming - 'We don't need more successful people, we need more compassionate people.' Well-meaning though it was, I immediately wanted to edit the posting to read 'We need more successful AND compassionate people!'

As any rural business owner or community leader knows, business is the corner stone of a successful community. Redesdale has already experienced its local hotel being closed. Now try and imagine what it would be like without the hotel, café, surrounding farms, and the many people running a small business from home.

Every rural area needs a hub albeit a small one, so why is business being portrayed so negatively?

Sadly the general public is easily influenced by the perceived horror stories of the big corporate world. A whole generation is

being brought up to consider business in a negative light. 'Social enterprise' has become the preferred choice of terminology, almost as if an apology for it being a business.

I have no doubt that there are bad business people in the world at every level. We are all human at the end of the day and that is just the way it is. I am the last person to complain if a bad business person gets caught out.



Redesdale's hub

However, this is the exception rather than the rule. The reality is that the vast majority of small business owners genuinely work hard without acknowledgment of their true worth.

Businesses invest back into their communities through wages, donations, and sponsorships; not to mention the personal service and convenience of not having to drive considerable distances to access that service or product. They help make our small towns a great place to live.

And don't forget the really big picture. Profits and taxes paid through business and its employees is the basis of the income on which our government relies to deliver welfare, health, education and other essential services.

"Isn't it in everyone's interest for business to be successful?" I pointed out to the disillusioned radio listener.

WWW: <http://www.kerryanderson.com.au/>

FACEBOOK: <https://www.facebook.com/ruralentrepreneurs/>

TWITTER: <https://twitter.com/KerryWords>

Turn your house
into a home
with Tucks
locally made products



- Aluminium and Timber Windows
- Window Replacements • Security Doors
- Shower Screens • Wardrobe Doors

We are in your area regularly and offer a **FREE** measure and quote service.

We can offer supply and install prices.



**Tucks
Windows
BENDIGO**

Celebrating 43 Years
providing top quality
products and
professional
friendly service.

P: 03 5446 8855 E: tuckswindows@impulse.net.au

www.tuckswindows.com.au

SUTTON GRANGE COMMUNITY

**are having a night with Redesdale Revellers
on Saturday May 13th at 7 pm in the
Redesdale Hall.**

**To book a table or for just a few, contact:
Steve Barty 0417 524 713 or 5474 8253
or Noel Davies on 5474 8236
or Mavis Collison on 5474 8230**

**Please come and enjoy a
great night!**



Letter to the Editor

Hi Kathy and Regina,

I wonder if it is possible to put a question to our community. Would anyone have advice or warnings regarding the NBN in Redesdale? We are getting to the end of our tether with the patchy wifi we currently have but would like more information about the NBN in Redesdale before making a commitment to that.

Also, is it possible to have the Redesdale-Mia Mia local contacts list in a larger font? With my poor eyesight I struggle to read it. Perhaps the page could be landscape and even a loose supplement.

Recently we were talking with neighbours about our glut of seasonal veges and what we do with them. It was suggested perhaps the Connection Monthly recipe spot seek seasonal recipes. I'd welcome that as I have exhausted the usual recipes that I use and am tired of them (and have a freezer full as well) so now the zucchinis are going to the chooks.

I also wondered if during the peak vege season there could be a weekly swap table at the hall or cafe?

Just getting thoughts out there.

Thanks for all of the work you put into our newspaper. I do love reading it.

Regards,

Debbie Graetz (North Redesdale Road).

Dear Debbie,
Great suggestions, thank you and I hope you get some feedback re the NBN. We have put a zucchini recipe in this month. We would REALLY like some receipes from readers when gluts in vegetables occur - or any time really!

It is very nice to get letters to the editors.

Thank you again.

Kathy and Regina - Eds

~~See Letters to the Editors March Edition Re P~~

~~Little Free Libraries:~~



Dear Editors,

I also have heard of the Little Free Library book exchange program. I think it would be great for Redesdale and Mia Mia and I would support it.

Norma Barker.



The Redesdale Hotel Social Club Presents

My Generation Karaoke Night

Sat 20th May
Redesdale Hotel

\$25 members \$30 non members, 6:30PM
Kid \$15 : includes entry, buffet dinner, prizes & fun
Money raised donated to the Redesdale Mia Mia Primary School
Tickets for sale now!! Contact Kylie 0408953262
Redesdale Mia Mia Primary School, or Try Booking

Make your special celebration a PARTY TO REMEMBER!

Party Hire Equipment For Hire

<p>Tables - 183cms rectangle</p> <p>Plastic Tables - \$5 each</p> <p>Chairs - White plastic - \$1</p> <p>Umbrellas - Charcoal \$5</p> <p>Table Cloths - White - \$2 each</p>	<p>Many more party items for hire to have your occasion organised & stress free.</p>
---	--

For more information please call 0418 130 206



The ALBION

KYNETON

Come and enjoy the experience that is The Albion Kyneton

The Albion offers a fine selection of local wines and famous beers on tap. Local produce from the Macedon Region is carefully prepared for classic Italian dinners. Children are catered for with a special menu just for their discerning palates.

The Albion is ideal for functions or parties. and offers indoor restaurant and outdoor courtyard dining.

Hours of Operation:
7 Days a Week 12noon till Late
• Lunch 12noon to 2pm • Dinner 6pm to 9pm

Phone for bookings (03) 5422 2066
Email drinkanddine@thealbionkyneton.com.au
1 Mollison Street, Kyneton Vic 3444
www.thealbionkyneton.com.au

Council's first Climate Change Action Plan drafted for public exhibition

Macedon Ranges Shire Council has drafted its first Climate Change Action Plan and is seeking community feedback from 18 April to 9 May.

The draft Action Plan outlines how Council will reduce greenhouse emissions from its operation by 25 per cent by mid-2021. In recent years, Council has invested in several works to reduce greenhouse emissions, including the installation of pool covers at its aquatic centres to reduce the need for heating water, the installation of solar panels at the Gisborne Administration Centre, and converting residential streetlights to energy efficient LEDs. Details about further works are presented in the draft Action Plan, which together will reduce greenhouse emissions by 1,910 tonnes of carbon dioxide (CO₂).

The draft Climate Change Action Plan also outlines how Council will support community efforts to address climate change, and promotes a shared Council-community vision—consistent with the Victorian Government's target for a zero net emissions Victoria by 2050.

To have your say, visit mrsc.vic.gov.au/your-say or drop-in to one of Council's service centres.

Mix it up at Kyneton Town Hall in May

Whether you want to laugh, cry, delve into Australian history or hum along to a familiar tune, Kyneton Town Hall is offering it all in May.

On Friday 12 May at 11.30am, the life and music of American composer, songwriter and singer Burt Bacharach is re-imagined in the tribute performance, Magic Moments. Featuring over 22 of his most popular hits, such as I Say a Little Prayer, That's What Friends Are For, Close To You and many more, Magic Moments puts the music of this distinguished artist back in the spotlight.

If its laughs you're after, book a ticket to the 2017 Melbourne International Comedy Festival Roadshow.

On Saturday 13 May at 7.30pm, the freshest and funniest stars from Australia's largest comedy festival bring the show to Kyneton, with performances from Bob Franklin, Danielle Walker, DeAnne Smith (Canada/USA), Sean Choolburra and Sam Taunton. Expect a hilarious evening of entertainment, with laughs guaranteed.

On Tuesday 30 May at 7.30pm, Indigenous Australian history is exposed in the theatre piece, Coranderrk.

The production, presented by ILBIJERRI Theatre Company, re-creates a chapter of Australian history which saw the people of the Coranderrk Aboriginal Reserve go head-to-head with the Aboriginal Protection Board to continue their explorations in self-determination on the country left to them.

A story of resistance and strength, this spirited drama revives the voices of those who fought, and aims to encourage an understanding of the past between Aboriginal and non-Aboriginal people.

Don't miss your opportunity to explore fashions from the time of Jane Austen, in the exhibition, Be Persuaded: A Jane Austen Experience, currently on show at Kyneton Museum.

The collection of rare fashion, accessories and ephemera from the 18th century through to the 1840s includes pieces such as an 18th century silk gown, boots, bonnets, parasols and more.

With items on show taken from the collection of Dressing Australia Museum of Costume, Be Persuaded is an opportunity to explore how fashion tells a story.

For more information on shows, or to book tickets, call 1300 888 802 or visit mrsc.vic.gov.au/buytickets

General Repairs, Maintenance

Tiling, Carpentry



**Home & Garden
Maintenance Services**

Robert Schomacker 0407 823 900

Painting, Gardening

CHURCH SERVICES

UNITING CHURCH

Barfold: 1st Sunday of each month
Metcalfe: 2nd Sunday of each month
Mia Mia: 3rd Sunday of each month
Sutton Grange: 4th Sunday of each month

Morning tea is served at each of these Uniting Churches at 10.45 am and services start at 11 am. If there is a 5th Sunday in the month, services may be found at Kyneton.

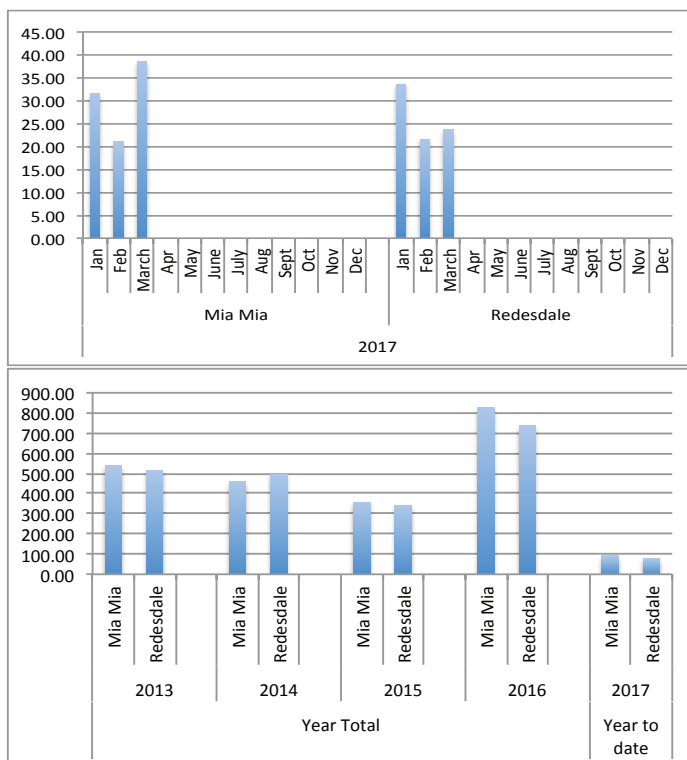
CATHOLIC CHURCH

Redesdale: 2nd Sunday of each month 11 am.



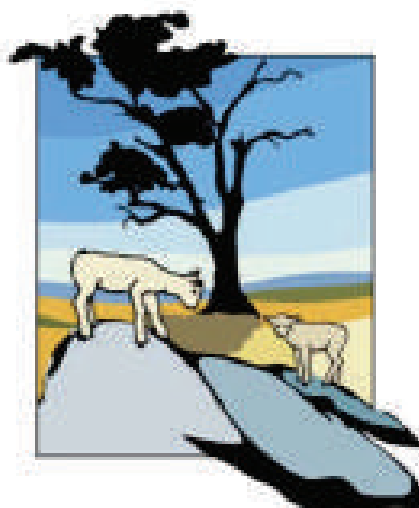
RAINFALL

The average yearly rainfall for Redesdale is about 601mms.
Thank you to Mary Bennett for the Mia Mia readings.





Redesdale Community Precinct Business Case



Redesdale

January 2017



EXECUTIVE SUMMARY

Overview

The small town of Redesdale in Central Victoria, has a strong and active community with a determination to maintain a township with modern, safe and attractive amenities in support of a healthy and appealing rural lifestyle. Development of a series of community enterprises within a Community Precinct at the Redesdale's Agnes Mudford Recreation Reserve is considered, by the majority of the community, to be a major component in delivering on this determination.

It is expected that successful establishment of linked community enterprises at the Recreation Reserve would strengthen Redesdale's economy and its economic development capacity, as well as further enhancing community connectedness and resilience.

This business case builds on work undertaken in a feasibility study completed by Community Leadership Loddon Murray Inc. in 2015 which concluded that *"there is clear need and support for a Community Precinct to be developed in Redesdale"*.

The business case has assessed the outlook for a commercial Community Precinct with three enterprises:

- An "Events, Functions and Meetings Enterprise", which encompasses the use of the Community Hall as an event and functions centre, and catering and commercial kitchen operations.
- A "Business Tenancies and Services Enterprise", which provides for regular tenants and occasional users of office services and facilities. This encompasses an adaptation of a business incubator, facilities for outreach health services and access to education, and social and recreational activities.
- "En-Suite Campervan Park Enterprise", which is a small, fully serviced, caravan park designed to service the campervan/motor home traveller market.

Major Findings

Community Needs and Market Demand

- ❖ Agnes Mudford Reserve is a focal point in Redesdale, and a logical location for the establishment of a Community Precinct. It already accommodates many of the town's communal facilities: Community Hall, cricket oval, pavilion, picnic shelter and powered barbecue, public toilet block, tennis courts, playground, and staging point for emergency services. The Reserve it is also the prime location for Redesdale's major annual events.
- ❖ There is existing, and long established, demand among local Redesdale organisations and visiting groups for the community hall and the reserve area as a venue for events, meetings and functions. To date, the hosting of these activities has not been a commercial proposition, at least for the organising groups and community¹.

¹ There may be positive commercial returns for stallholders, exhibitors and other suppliers to these events and functions.

- ❖ In 2016, there were 92 booked events, functions and meetings at the Hall and Reserve. The number of participants at these events, functions and meetings is estimated to be 11,555 attendees, with in excess of 80 stallholders and exhibitors. Over 50% of the events, functions and meetings have the potential to attract a fee, either from stallholder, exhibitors, or patrons/attendees. Indeed, potential 'fee for service' events and functions account for 51% of 2016 bookings, and they account for 87.8% of all attendances.
- ❖ Realistic booking (or market) targets have been set for a program of Major Festivals, Fire and Landcare Meetings, Craft Markets, Catered Community Events, Hired Functions, and Community Meetings over a period of five years, as part of the process in assessing the business prospects.
- ❖ Offering business tenancies and services for permanent users, regular visiting businesses, and occasional users (such as home based businesses in need of meeting or office space on occasion, or information technology support) is the second of the proposed community enterprises at the Community Precinct. It is an extension, and local adaptation, of a business incubator.
- ❖ Discussions were conducted with all organisations and individuals that could be identified as potential users of a Redesdale business incubator/Business Tenancy and Services facility. These led to a probability assessment for the proposed enterprise and the setting of annual market/usage level targets over five years in the range:
 - Regular tenants: 8 to 12
 - Occasional users: 5 to 8.
- ❖ Concept and design features of the Travellers Rest facility in Charlton have been used as a basis for the proposed Redesdale En-Suite Campervan Park Enterprise, with the proposed construction of 4 en-suites. A comparative assessment of other caravan parks in small towns across regional Victoria helped in confirming competitive pricing structures and trends in demand for caravan park services, with en-suite and other facilities. Five-year target occupancy rates are modelled across the range 17% to 35% occupancy.

Operations Plan

- ❖ Commonwealth and state laws and enforcement procedures apply to all Crown land reserves. Although the Redesdale Recreation Reserve Committee is the appointed management body for the Agnes Mudford Reserve, the implementation of Community Precinct enterprises will require approvals and controls stipulated by both the Department of Environment, Land, Water and Planning, and the City of Greater Bendigo.
- ❖ Capital works for the proposed community enterprises require an estimated \$644,500 in expenditure, comprising:
 - \$336,500 for the Events, Functions and Meetings Enterprise
 - \$182,700 for the Business Tenancies and Services Enterprise
 - \$145,300 for the En-Suite Campervan Park Enterprise.
 In preparing financial projections for the operations of these enterprises, it is assumed that these capital costs will not be sourced from a commercial funds provider. Therefore, no allowance is made for loan repayments or the cost of finance.

Organisation Plan

- ❖ There are already four incorporated community organisations which are stakeholders in the Precinct development, and it would be desirable to rationalise these organisations (by bringing them together under a collaborative structure) and clarify their respective roles, rather than to create yet another community organisation.
- ❖ The preferred organisational structure arrangement for a Redesdale Community Precinct is to register a business name for the Precinct (such as Enterprise Redesdale) under Redesdale Recreation Reserve Committee Incorporated (RRRC), in the short-term, and for RRRC to incorporate as a company limited by guarantee after the enterprise has begun to trade successfully and provide evidence of sustainability.
- ❖ Projections for the Community Precinct enterprises indicate there would need to be continuing reliance on volunteer input in the short to medium term, if the enterprises are to be implemented. The level of staffing, and associated skills, which could be supported by the enterprises in the first five years of operation include 0.9 to 2.15 full time equivalent staff (excluding those working in their own enterprises at the Business Tenancies and Services Enterprise, or running stalls/outlets at events).

Financial Plan

- ❖ Cash budget projections, over a time horizon of 5 years, were prepared to examine the potential viability of the proposed Redesdale Community Precinct enterprises and the circumstances under which they could be viable. Three scenarios have been presented.
- ❖ Scenario 1, the Low Scenario, does not produce a viable return for any of the proposed enterprises. It would require a cash injection of around \$30,000 in Year 1 and further annual cash injections of about \$10,000 per annum in subsequent years in order to be sustainable (in addition to the capital development costs involved in establishing the enterprises).
- ❖ Scenario 2, the Medium Scenario, does not produce a viable return for the combined enterprises, although it would be approaching a breakeven level of operations beyond Year 5. It would require a cash injection of around \$35,000 in Year 1 to be sustainable over the first 5 years (in addition to the capital development costs involved in establishing the enterprises).
- ❖ Scenario 3 produces a viable return for the consolidated enterprises. It would require a cash injection of around \$21,000 in Year 1 and the viability relies on the profitability of in-house catering arrangements.
- ❖ Overall, the proposed Redesdale Community Precinct Enterprises are high risk, with potential to achieve viability only if there is:
 - Ongoing volunteer community input.
 - Capital investment from grants, community contributions and fundraising, and/or philanthropic donations.
 - Achievement of operational results at the assessed 'high level' of potential demand.
- ❖ Potential for achieving sustainable enterprises could be improved by implementing the ventures in a staged approach, with stages proceeding only after successful results are achieved with a preceding enterprise.



Your Health!

with

Dr Tim

"Memento Mori" - the mediaeval Christian practice of meditation on the transience of earthly goods and vanity of life is definitely out of vogue in today's western culture of youth and consumerism, but if ever there is an appropriate time in the calendar to think on death, it is around Easter. Depressing as it is, we all are going to die one day, and no amount of scientific research and manipulation will be able to turn back the clock on an ageing process that can be minimised but not stopped.

For all the public debate around issues of death and dying, palliative care and euthanasia and assisted death, there remains a huge amount of ignorance about how and also why death occurs today, every day in hospitals and homes in Australia. Opinion about dying is sometimes extreme, there are the eternal optimists who cling to the hope of life despite inexorable health challenges, ready to try literally anything to attempt a cure of their disease. On the other side are those who wish to control the manner of their death

preemptively perhaps just because they are old and "had enough". I am talking about extremes of preparedness or acceptance of death really in these examples. But while the extremes are difficult to discuss, there is huge variety of opinion about what to do about death in between these extremes as well. What seems to be overwhelmingly the case is that as in so many other facets of life there is increasing popularity in the notion of "taking control personally" of one's death- leaving as little as possible to chance. However the "taking control" takes as many forms as there are individuals dying.

The taking control is partly reaction to all the losses that occur with dying, loss of dignity, loss of physical independence and so on. In my experience the symptoms that are most often associated with dying are extreme fatigue, pain, loss of bladder and bowel control and loss of "marbles", and while all of these symptoms can be minimised, the reality is that sometimes-only sometimes - these symptoms are difficult to control.

Going into further detailed discussion about the intricacies of palliative care is not helpful - as every palliative patient is different in so many ways. What is important though is to have a sound relationship and understanding with a doctor who will look after you in a palliative sense when the time is right. In discussing options for care with this doctor not only can

appropriate care and treatment be administered in a timely manner - but also it will help your doctor in discussions with your family and loved-ones when you are no longer able to have these discussions yourself.

The preparation of a document such as an Advanced Care Directive is legally recognised as a statement of your concerns and importantly, prohibitions of treatment. It can help facilitate discussion and make decision-making much easier than would otherwise be the case. Make sure you discuss death and dying with your family and your treating doctors as much as possible. It is only in having those discussions and writing them down that it is possible to make the process as least stressful as possible for our family. Death and dying is not a topic we should be shy about - having the conversation early can prevent huge problems for those who are concerned with your care in your last days of life.

Dr Tim Stobie 5422 1397



OUR PUB

A little town like Redesdale, and its surrounding neighbouring townships, doesn't function well without a pub. Even if you don't drink alcohol, the pub is the beating heart of a village and a great place to catch up with neighbours and to bring visitors along for a rural hotel experience.

But our pub is more than that. Beth and Garth have been very generous supporters of a number of community events. Recently they donated pizzas to firefighters battling the Tooborac fire. They were major sponsors of the bush market in March and provided the winning raffle prize. They were one of the sponsors of the painted sheep for the festival and for the advertising leaflet. And they have collected hundreds of dollars for the CFA through donations across the pub's bar.

The new hotel social club is going gangbusters and it holds regular social events for the Redesdale and District community. Members can enjoy a number of benefits including discounted drinks on Friday night, concession tickets to social events just to name a couple.



The social club's next event (see page 11) is on Saturday 20th May 'My Generation Karaoke Night' with proceeds going to the Redesdale Mia Primary School. Adults \$30, members \$25 and kids \$15 includes buffet dinner, entertainment and prizes.

(Contact Kylie Munro 0408953262 for more information and ticket sales.)

More examples of the pub's generosity was the donation to the CFA of the overnight rentals from a caravan group who unexpectedly needed a place to stay - Beth offered them the corner hotel paddock. Last year, the photo exhibition for the festival was held at the pub.

Nothing seems to be too much trouble for Beth and Garth. They are "can do" people.

So THANK YOU Beth and Garth for everything you are doing. May you and your business flourish!





Redesdale Ramblings: Cyclamen in the Garden

Redesdale Ramblings: Cyclamen in the Garden

Most people know cyclamen as those flouncy, frilly flowering house-plants usually bought for Mother's day to last a few weeks then slowly moulder away before being thrown out. These florist flowers are all descended from a wild species called *Cyclamen persicum* which comes from the Mediterranean. Over centuries of cultivation, breeding and selecting for different colours, shape and flower size it has been transformed into a monstrosity far removed from the delicate wildflower. If you do receive one as a gift there are a few tricks to keeping it alive and flowering for more than a single season. Firstly remember that it isn't an indoor plant so don't keep it inside all the time. It used to be said "Put it out at night with the cat" – not that we recommend leaving cats outside these days! – giving it fresh air and a cool place overnight can help it survive a lot longer and when it stops flowering it can be left outdoors in a shady spot until the foliage starts to go yellow when you should also stop watering it until new growth appears. Unless you want to collect seed to sow, it's best to remove the flower stalks as each bloom fades – rather than cutting them off, each stalk should be held firmly and twisted as you pull upwards removing it cleanly – this will cause less damage to the tuber than letting the stem rot away, perhaps allowing infection to take hold.

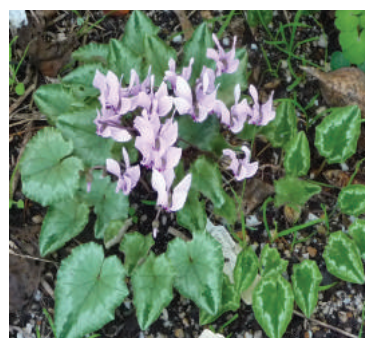
If you'd rather grow this cyclamen in the garden you may have some success if you can provide a protected spot out of direct sun. A pot on the verandah might be a better option. In recent years a range of smaller *Cyclamen persicum* selections have been released which have been bred for the garden but they still do best in pots in the shade.

The wild plant that they were bred from is a lot more graceful and is now becoming available from some of the specialist growers (try Dicksonia Rare Plants, Mt Macedon). It does quite well in the shade-house and we're trying it out under some deciduous trees.



Some of the other wild species are more suitable for growing in Central Victoria and *Cyclamen graecum* (above) has been one of the best. It can be grown in full sun in a raised bed or rock garden and will survive on natural rainfall – no need for watering! Mainly because it only comes into flower and leaf when the autumn rains start, produces seeds, then all top growth dries up as summer approaches so nothing is seen until the following autumn. In fact, watering over summer while it's dormant could cause it to rot. Usually the flowers appear quite suddenly once the weather cools down after summer; as the flowers fade the foliage starts to unfold – the patterned leaves are quite attractive in their own right varying from plant to plant.

The master of variation in foliage however has to be *Cyclamen hederifolium* (the ivy-leaved cyclamen) which can do alright here in deciduous shade but it thrives in cooler gardens in the Dandenongs or Macedon where you can get a virtual carpet of patterned foliage through the winter. The picture below shows *C. hederifolium* with two types of foliage.



A more delicate little species is *Cyclamen mirabile* which has pale pink flowers sitting only 5 or 6 cm off the ground but the foliage can be an amazing pink colour when it first emerges – worth growing for this alone, but keep it potted, preferably in the shade-house.

Cyclamen coum is winter flowering cutie with more circular foliage – an old name for it was *Cyclamen orbiculatum*. Its flowers appear in shades of pink or white, often with darker markings near the "snout" (where the petals fold back to give the flower its characteristic, windswept appearance). In cooler climes it'll spread quickly by seed and is perfect to grow with *Cyclamen hederifolium* which will have finished flowering just as *Cyclamen coum* starts; it also appreciates deciduous shade and revels in the leafy soil found there. These little treasures can sometimes be found in the bulb catalogues but the best way to buy them is to see them in flower or in leaf; so check out the local nurseries such as Dicksonia (Mt Macedon), Collectaflora (Woodend) or The Garden Tap (Kyneton).

Cheers
Fermi

The Redesdale Rock-Gardener



Our **boutique nursery** hosts an array of **beautiful plants**, many unusual, some rare, that you might not find elsewhere. Of course, being in the Macedon Ranges, there is an **emphasis on frost hardy varieties**.

Mention
this ad for a
10% Discount

Among the plants you will discover **unique garden art** from local artists and artisans as well as **recycled and restored garden wares**.

The Garden Tap
Nursery and Lodgings
 p: 03 5422 6117
 e: hello@thegardentap.com.au
 96 Piper Street, Kyneton, Victoria
www.thegardentap.com.au



Hello Dear Readers,
Lady Bombay here again.
Trusting that everyone had a frolicking time over the Easter celebrations. Now I know as I ponder my eyes over this picturesque landscape of Mia Mia Manor, the hews of gold and yellow and cerise and claret are autumnal for me and I consider what needs to be attended to prior to the throws of Winteress bleak. Time to pull out all the summer annuals that have given me months of joyous splendour and plant what I thought would be a nice change

of polyanthus. The colour theme for this shall be a deep blue for the outside of the pots and yellow for the centre. Time also for the cold sensitive pots, namely the fuschias, geraniums, lemons, limes and oranges to be placed under eaves or covers. Move all the azaleas and camellias from shaded postions to northern light aspects. As I cannot move all this, Thorn the gardener, who by the way is serving his penance, shall be doing all this rearrangement with the help of my critical eye.

As the fire restrictions have now come to a close, it is that time of the year for the annual burn off piles to be dealt with. Start with small amounts to burn at a time. If one is unsure how to tackle this matter particularly in gargantuan proportions, contact your local CFA. Now to the vegetable garden. Rotate the placement of plantings; Doing the rotation shall keep the bugs and pests at bay. Of course, bags and bags of manure. Natures elixer. You don't need to study magic or pay

strict attention to the lunar phases, you just need to have some ideas as to what you wish to grow. As I can never remember what I planted from one year to the next, I can proudly say that I have broken into the twenty first century technology and thanks to the digital camera, have succeeded. Pat on back Laby B, I say.

Now I know some of you would have had visitors over the Easter period, as we did. However, if they bring their dogs with them, strict protocol for these devine quadrapeds is critical. Dont let them out of one's car. Leave them with water and the windows ajar, in the shade, and then your garden is safe from destruction. Need I explain further? From my window, I can see Thorn unloading my load of roadside firewood out of the Bentley. Best go and supervise and then, time for Mothers ruin.

Dont forget that the day of a nation is coming up. Yes that's right, Mothers Day. And yes, the children are still in the will. Keen horticultural delights as always and salutations.

Lady Bombay Sapphire.

"GardenLore"

*InAncientGreece, farmersP
believedRhatRheBestWayRoP
ridRheirRropsRofRa
mouseRnfestationRwasRoP
writeRhemRaRetterP
suggestingRtheyRfindBome-
whereelseRoRlive!*



Bombay and a Bex

*Send in your questions for Lady Bombay Sapphire to
bridgeconnection.editor@gmail.com*

Dear Lady B.

I noticed in your last article that you were going to cook the Easter Bunny. How could you do this to me?

Charlotte Double-Barrel

Dear poor, sweet, innocent Charlotte,

I blame the parents. Now you have to realise that the bunny is part of the food chain, and as they are in abundance, I did not get a chance to ask it for its name. As it has benefited from the production of ones garden, plump little fellow he was, and might I say delicious. I'm sure that he had plenty of benefactors. One really needs to ask one's parents about such things.

If you have one, (a bunny I mean, not a parent) keep giving it carrots or whatever you do. Perish the thought.

Kind regards,
Lady B

Protect your bush block forever

Are you passionate about preserving native vegetation on your block?

Come along to a free information session for landowners interested in finding out about the financial incentives and support available for protecting native plants and wildlife on their property.

The event will be held on Tuesday 23 May from 7pm–8.30pm at Kyneton Mechanics Institute, 81 Mollison Street, Kyneton.

The evening will include a discussion with representatives from:
Trust for Nature
Land for Wildlife

The Victorian Government's Native Vegetation Offsets Department

To book your place, visit mrsc.vic.gov.au/environment-events or call 5421 9660.

**Do you require firewood cut,
rubbish removed
or a tree lopped?
We do that too...
call us for a quote.**

Les 0481 232 896

GRASS SLASHING



NEEDED: Any old greeting cards to recycle into new ones

Ring Janette for pick up. 0407 004 728.



LOCAL REDESDALE / MIA MIA - CONTACT LIST

FIRE REPORT A FIRE 000

VIC BUSHFIRE INFO LINE
1800 226 226

REDESDALE FIRE BRIGADE

- Secretary - Lee Mason 0422 055 278

MIA MIA FIRE BRIGADE

- Captain Calvin Millard 0409 979 037 A/H: 9744 6745
- Mia Mia Fire Brigade Secretary - Steve Cadasch 5425 5548

LOCAL ORGANISATIONS

BRIDGE CONNECTION MAGAZINE

Editors: Kathy Hall	0408 116 899
Regina Bennett	0437 514 223
Bridge Connection President - Mary Bennett	5425 5551
Bridge Connection Treasurer - Terry Mackenzie	5425 3272

MIA MIA MESSENGER Enquiries 5425 5565

Mia Mia Hall Committee - Wendy Hulls	5425 5590
Mia Mia Mec. Inst. Secretary - Wendy Hulls	5425 5590
Mia Mia Mec. Inst. Preident - Anthony Ryan	5425 5578
Mia Mia Reserve Comm. Secretary - Anthony Ryan	5425 5578
Mia Mia Reserve Comm. Chairperson - Grant Hulls	5425 5590

Otis Foundation	5444 1184
-----------------	-----------

Redesdale and District Assoc. Inc - Kathy Hall (Sec.)	0407 116 899
Redesdale Hall Committee - C. Boyd (Sec)	5425 3194
Redesdale Hall Hire - C. Boyd (Sec)	5425 3194
Redesdale Rec. Res. Cttee - Lindsay Booker (Sec)	0448 021 544

Suicide Bereavement Service - 'Standby' 0439 173 310

Tennis Club - Linda Newnham	0400 554 716
-----------------------------	--------------

TOWNSHIP BUSINESSES

Redesdale Hotel - Beth & Garth	03 4405 0601
Redesdale General Store - Dino Tomisic	5425 3154
Rural Café- Elizabeth and Shane	5425 3271
The House Gallery - Ray & Joyce	0408 154 315

COUNCILLORS

City of Greater Bendigo - Eppalock Ward

George Flack	0429 083 993
Marg O'Rourke - Mayor	0429 061 096
Yvonne Wrigglesworth	0429 117 600

POLITICIANS

Federal Member for Bendigo - Lisa Chesters (Labor)	5443 9055
State Member for Euroa - Steph Ryan (Nationals)	5762 2100

ADVERTISERS

Breaze Energy Solutions	(03) 4309 4027
Cambia Hair Studio	0411 411 407
Central Victorian Sheds	1300 955 608
Connolly Glass	0428 535 101
Kepala Pet Resort	9740 1272
KMA Tax	5422 3178
Kyneton Toyota	5421 0210
Les - Grass Slashing	0481 232 896
LnR Home Maintenance	0407 823 900
Macedon Ranges Tax & Acc.	5422 6460
Mica Grange	5474 8261
Party Equipment for hire	0418 130 206
Palmer Steven & Rennick	5422 6500
Redesdale Hotel	03 4405 0601
RK Earthmoving	5425 5506
Roaster for Hire	0418 130 206
Rural Café	5425 3271
Tha Albion	5422 2066
Todd Property	5433 2288
Tucks Windows	5446 8855
William Farmer Funeral Directors	5441 5577

ORGANISATIONS

City of Greater Bendigo	5434 6000
Macedon Ranges Shire	5422 0333
Mitchell Shire Council	5734 6200
Mount Alexander Shire	5471 1700
POWERCOR	132 412

SPONSORS *Without their support our community would not thrive - Thank you!*

Bendigo Travel and Cruise	03 5441 8811	Kyneton Copy Centre	03 5422 2400
blue pencil publishing	0429 911 980	Kyneton Veterinary Hospital	03 5422 1099
Elphinstone Post Office & Store	03 473 3200	Redesdale General Store	03 5425 3154
Heathcote Community Bank 1300 236 344			

Redesdale Recreational Reserve Committee Inc.

Chairman's Monthly Report

May-2017

Ronn Taylor and Gary Prendergast
building the stormwater drain.

Hi Redesdalians

Well winter is upon us and fires are being lit for the first time this season. Just a friendly reminder to make sure your flue is clean as we know the consequences.

The hard work of the committee members is paying off as the picture shows. The installation of the grated storm drain at the rear of the pavilion has been completed. This is necessary to stop storm water penetrating the pavilion, well done guys! In the following weeks the installation of the walls and roller door will begin and this will complete the new storage area.

Following the Wednesday meeting with locals at the cafe, community members were able to meet Eppalock Ward councillors again at the primary school on April 20th after the RADA meeting to get an insight into what is in store for Redesdale.

Mayor Marg O'Rourke and Councillor Yvonne Wigglesworth were prepared to answer questions from the floor on many and varied subjects and were delighted by the enthusiasm of the community members who attended.

Some of the items discussed were, street-scaping, responsible dog kits, hard rubbish collection, town welcoming signage and many other items to beautify our little hamlet.

All goes well for the Redesdale community with this dynamic group of Councillors looking after our interests. It just goes to show what a community working as one can achieve.

Until next month remember a smile and a friendly hello goes a long way to making a more friendly community.

Les Pocock



ANZAC DAY



Every year the Anzac Commemorations at Sutton Grange get bigger. Again it was organised by a group led by Marjory Trownrow who provided a generous morning tea following the formalities. Glen Rieschick, from the Bendigo RSL, was again the MC and ex-serviceman Ron Lister (below) gave a moving address stressing the valour of servicemen and women and the importance of the Australian culture of mateship.

Squadron Leader, Nerida Lister (Ron's daughter) who has just returned from her 5th deployment in the Middle East laid the first wreath (above right).



The Ode

They shall grow not old, as we that are left grow old;
Age shall not weary them, nor the years condemn.
At the going down of the sun and in the morning
We will remember them.

The Ode comes from For the Fallen, a poem by the English poet and writer Laurence Binyon and was published in London in The Winnowing Fan: Poems of the Great War in 1914. This verse, which became the Ode for the Returned and Services League, has been used in association with commemoration services in Australia since 1921.



RECIPE OF THE MONTH

21



Zucchini and Tomato Bake

Serves two.

- 1 large onion (150g)
- 400g ripe but firm tomatoes
- 300g slim dark zucchinis
- 1 clove garlic
- 4 tablespoons olive oil
- 1/2 teaspoon of thyme
- salt pepper
- grated cheese (optional)

Preheat oven to 250 deg C.

Peel onion and slice finely & soften in half the oil stirring with a wooden spoon. Do not allow to brown.

Using a potato peeler, remove alternate 1 cm strips of peel from zucchinis to give a striped effect. Slice them finely and keep on the side.

Slice tomatoes finely and keep on one side.

Rub a 20cm wide gratin dish vigorously with peeled garlic. Spread the cooked onion over the bottom of the dish and season lightly with salt and pepper. Arrange alternating rows of zucchini and tomato on the bed of onion and season. Sprinkle with thyme and the remaining oil.

Cook uncovered for about 30 mins pressing the mixture down with a slotted spoon from time to time. The vegetables should be well cooked and slightly browned.

This dish goes particularly well with roast lamb.

You could add a sprinkling of grated cheese.

You could also make nests in the finished dish and slide a fresh egg into each nest. Once the egg is set finish off under the grill.

The dish is equally good cold.

Jim's planter boxes

Perfect for succulents, herbs, bonsai, or small plants. Fits up to 6 inch potted colour.

Add a trellis - get creative!
Unplanted \$80 Planted \$90

Phone:
54253
194

JIM'S PLANTER BOXES
\$90
MADE TO ORDER!



ANZAC BISCUITS

Ingredients:

- 150g (1 cup) plain flour
- 90g (1 cup) rolled oats (see Notes)
- 85g (1 cup) desiccated coconut
- 100g (1/2 cup, firmly packed) brown sugar
- 55g (1/4 cup) caster sugar
- 125g butter
- 2 tablespoons golden syrup
- 2 tablespoons water
- 1/2 teaspoon bicarbonate of soda



Preheat oven to 160°C. Line 2 baking trays with non-stick baking paper. Combine flour, oats, coconut and combined sugar in a large bowl. Stir the butter, golden syrup and water in a small saucepan over medium heat until the butter melts and the mixture is smooth. Stir in the bicarbonate of soda.

Roll level tablespoonfuls of the oat mixture into balls and place, about 5cm apart, on the prepared trays. Flatten until about 1cm thick. Bake, swapping trays halfway through cooking, for 15 minutes or until light golden. Set aside for 10 minutes to cool slightly before transferring to wire racks to cool completely.

Shopping tip:

Make sure you buy whole rolled oats - if you use instant oats, the mixture will spread too much and your biscuits will be flat.

Make them your way:

Soft and chewy: Omit the brown sugar and increase the caster sugar to 155g (3/4 cup).

Dark and crunchy: Omit caster sugar. Increase the brown sugar to 155g (3/4 cup, firmly packed). Bake for 18 minutes.

Thin and crispy: Omit the caster sugar. Increase the brown sugar to 200g (1 cup). Reduce the flour to 115g (3/4 cup).



The Redesdale Hotel



Classic Country Pub Dining

For bookings
(03) 4405 0601



Monday - Closed
Tuesday - 4pm to 8pm
Wed to Sun • Lunch 12noon - 2.30pm
• Dinner 6pm - 8.30pm

 [redesdalehotel](https://www.instagram.com/redesdalehotel)

 [The Redesdale Hotel](https://www.facebook.com/TheRedesdaleHotel)

The Redesdale Hotel
2640 Heathcote-kyneton Road
Redesdale, Vic, 3444
info@theredesdalehotel.com.au

www.theredesdalehotel.com.au

Sequicentenary planning



The Sesquicentenary planning group has been meeting regularly at the Redesdale Hall. The Redesdale Bridge is 150 years old in January next year. The above photograph (courtesy of Jill James) was taken at the 100 year celebrations.

The group is planning a ceremony on the bridge at 11 am on Saturday 27th January (Australia Day weekend) 2018. This will be a short event where there will be a re-enactment of the smashing of a bottle of champagne on the bridge and naming it 150 years ago by the then mayor's wife. After short speeches, people will go to the Redesdale Hall for lunch and more celebrations. At the Hall will be a display of memorabilia and historical photographs as well as projected recorded interviews with longstanding members of the community.

The group is also planning a history board for tourists visiting the area which will tell the story of the bridge. It is also possible that there will be a designated area of roadside with parking next to the history board. There is still a long way to go with the planning.

There has been agreement from VicRoads that half the bridge will be closed and appropriate safety arrangements will be made for the ceremony.

The planning group welcomes anyone who would like to be part of the process. The next meeting is on Friday 5th May at 5 pm at the school.

Website upgrade for *redesdale.net*

It has been nearly four years since the **redesdale.net** website was developed and it is starting to look a bit dated! The Redesdale and District Association last week voted to allocate funds to revamp the site. The site is maintained by GreenGraphics in Castlemeaine who give special rates for community services. Kylie Munro manages the site from the Redesdale end.

The new site will be a modern, state of the art, fully responsive system, with a photographic slide show of the area, a new events calendar, a "get listed" system for public contributions and a new menu system.

If you have any ideas regarding what you would like to see on the website, please call 0407 116 899 or email: info@redesdale.net

Community input is not only wanted but essential.

REDESDALE REVELLERS



Tables of ten are available or come as a one-some or twosome (your choice), a great fun evening will be had.

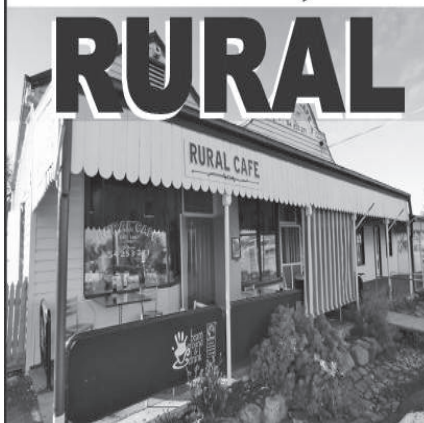
Tickets are available from Dorothea
03 5425 3118. --- See you there!

The 'Revellers' are almost here!

Dates, again, are May 6, 13, 20, 27, and June 3.
&.00Pm for a 7.30 start.

The tickets are priced at \$42.50 per head - this includes the show from the Revellers, and a three course meal plus tea and coffee. BYO drinks and nibbles.

Come and try our coffee at the
RURAL CAFÉ



In the centre
of Redesdale

Now serving Norma's
famous apple pie!

Open 8am to 5pm

A great place to stop for all day breakfast, lunch, excellent coffee
and fresh cakes.

Phone: 03 5425 3271

Redesdale Fire Brigade have had a busy March and April this year and it's hasn't been all about emergency callouts as you may think! The Brigade had 10 firecalls in March, two of which involved houses, proving to be an unusually eventful March. In April, the Redesdale Brigade once again collected for the Royal Children's Hospital "Good Friday Appeal" and again beat their own record raising an impressive \$6,907.30, thanks to the generosity of the locals and the passing traffic. The Rural Cafe generously served the volunteers refreshments in the form of easter buns and hot drinks. The Easter Bunny again proved to be extremely popular, with many requests for photos with both children and adults alike.

The Easter Bunny then joined the Brigade the next night in Bendigo's Easter Torchlight Procession. This year Mia Mia Fire Brigade drove in to Bendigo with the Redesdale Brigade and it is believed to be the first time that the Mia Mia Brigade have entered the Procession. The Procession entries were judged beforehand and the Redesdale Brigade were delighted to be chosen as "The Best Fire Brigade"; thanks largely to the vivid imagination of Third Lieutenant James Boyd in decorating the truck, which included a realistic giant carrot this year!

The Redesdale Brigade Members and the much-admired Easter Bunny thoroughly enjoyed meeting the crowd as they walked along, with many high fives the full length of the parade and smiles all around.



Top: Members pose in front of their prize-winning Torchlight Procession entry. Above: Members collect from motorists for the Royal Children's Hospital Appeal. Below left: The Easter Bunny helps with collections outside the Redesdale Hotel. Below and below left: The winning Redesdale truck during the Torchlight parade.



Right up their alley !

Redesdale Fire Brigade – Social Evening



The logo for Redesdale CFA NEWS, featuring a red and white checkered square with 'CFA' in red below it, and the words 'REDESDALE CFA' in red above 'NEWS' in large grey letters.

If you want to do a big burn on your property, please first call:
1800 668 511

A stylized illustration of a bonfire with flames and smoke.

Members of the Redesdale Fire Brigade and their families recently spent an evening at Bendigo Ten Pin Bowling.

Highlights of the evening included; Paul Atkins smoking up the lanes, taking the prize as the fastest bowler, Steven Atkins demonstrating a super bowling technique with his impressive leg placement, and Andrew Campbell was on fire demonstrating his bowling prowess with 5 consecutive strikes. The award for the 'Best International Bowler' went to Jim Boyd, Team 3, consisting of Paul Atkins, Lindsay Booker, Martine Atkins, Andrew King, Jo Smith-Sargent and Selena Boyd. They were awarded the highest scoring team of the night extinguishing their opposition.

It was a wonderful way to celebrate the impending conclusion of another fire season.



Thanks to the Redesdale Hotel

In March the CFA attended a large fire in Tooborac which required a number of trucks and personnel to be stationed at Redesdale. It all happened late in the day and it was difficult to organise food delivery to the firefighters. In typical fashion, Beth McIlwain from the Redesdale Hotel saw the problem and offered pizzas from the pub. Imagine how grateful our firefighters were! **Thank you Beth and Garth!**



By the way - Tuesday night is pizza night at the pub - 4.30 to 8.30

Please support our Fire Brigade's major raffle

It will be drawn in October. If you can't locate a CFA member with raffle books, call 0428 253 104



Redesdale Fire Brigade

MAJOR RAFFLE

1st Prize:
Firefighting Trailer & Accessories



TICKETS 0001 - 0020

BRIDGE CONNECTION COMMUNITY NEWSPAPER

Advertising Rates/Sizes

Size	Height x Width	Price per issue	10 Editions
Business Card	55mm x 90mm	\$25	\$250
Quarter Page	130mm x 90mm	\$50	\$500
Half Page	130mm x 190mm	\$95	\$950
Full Page	270mm x 190mm	\$175	\$1,750

Colour Advertisements plus 20%.

Please send editorial or advertising copy to:

bridgeconnection.editor@gmail.com

or by post to **866 Coliban Park Road, Redesdale, Vic 3444.**

For other editorial enquiries, please phone **0407 116 899**

Bridge Connection Distribution

800 Copies printed and distributed to Redesdale Mia Mia Region, including Barfold, Baynton, Derrinal, Elphinstone, Glenhope, Kyneton, Langley, Metcalf, Sidonia and Sutton Grange

Disclaimer: The Bridge Connection Inc. Committee wishes to advise that the views or remarks expressed in this publication are not necessarily the views of the volunteer Bridge Connection Inc. editorial or production team and no service or endorsement is implied by the listing of Advertisers, sponsors or contributors. Although every effort is taken in reproducing and printing advertisements correctly, we take no responsibility for errors.

Management Committee

President : **Mary Bennett** (03) 5425 5551

Secretary: **Regina Bennett** (03) 5425 5402
bridgeconnection.secretary@gmail.com

Treasurer: **Terry Mackenzie** (03) 5425 3262

Magazine: **Kathy Hall & Regina Bennett** (03) 5425 3272

SPECIAL MESSAGE

Bridge Connection is a not-for profit community enterprise.

All the work is done by volunteers. We rely on sponsorship and advertising to cover printing costs. We would welcome new members to the organising committee and would love more assistance with editing.

*Special thanks to **Lyn Ingles of blue pencil publishing** (0429 911 980 - blupen@ncable.net.au) who does all our graphic designing on a volunteer basis.*

Don't know what we would do without her.

**KEEN TO
CUT
YOUR
HOT WATER
BILLS
BY 75%
???**

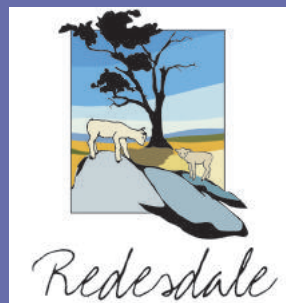


**BREAZE
ENERGY
SOLUTIONS**

Solar Power Solar Hot Water
Heat Pump Hot Water
On Grid & Off Grid
Domestic & Commercial

energysolutions@breaze.org.au

03 4309 4027



**IT'S TIME TO RENEW YOUR REDESDALE AND DISTRICT
ASSOCIATION MEMBERSHIP OR TO JOIN UP FOR
THE FIRST TIME**

**Membership applications can be downloaded from the
Redesdale website: www.redesdale.net**

Bendigo
Travel & Cruise Centre

336 HARGREAVES ST. BENDIGO
www.bendigotravelandcruise.com.au
03 5441 8811

Find us on

DEFIBRILLATOR

IS AT THE GENERAL STORE

Arrangements are being made to relocate the
defib where it can be available 24/7.

SUBSCRIPTION

If you are unable to receive a **RELIABLE** free delivery of the Bridge Connection, you can subscribe for **postal** delivery for \$25 per year.



Please contact the treasurer on:
(03) 5425 3262 or email:
bridgeconnection.secretary@gmail.com

The Bridge Abroad

proudly sponsored by Bendigo Travel
and Cruise 5441 8811



Bendigo
Travel & Cruise Centre

A prize at the end of this year!

Bendigo Travel and Cruise have sponsored this regular section. Next time you go away (Australia or overseas) send us a pic of you or a friend holding a copy of the Bridge Connection and we will enter it for a prize



The 'Bridge' has something for all ages.
Don't forget to send us in your Bridge Abroad pics.

Want an Accountant you can talk to and build
a working relationship with?

MACEDON RANGES
TAX & ACCOUNTING

TAX SPECIALISTS & BUSINESS STRATEGISTS

Call me for a chat to find out how I can help you.

Christine Greene B.Bus (Acc.), Tax Agent

T: 03 5422 6460 M: 0481 101 455

E: contact@mrta.com.au

www.macedonrangestax.com.au



BOOTCAMP

TUESDAY 6.30PM-7.15PM
THURSDAY 6.30PM-7.15PM
SATURDAY 7AM-7.45AM

\$10 a session
First session is free!
All Fitness levels welcome!
Come along, bring a drink bottle, a towel and prepare to have fun
and be **puffed**!

ARE YOU READY TO MAKE A
CHANGE?

Get Motivated,
Healthy and
Strong!

Increase Energy
and Endurance

Gain Confidence

Lose Fat, Inches,
Weight

BE SOCIAL and
HAVE FUN!

JESSICA CARR

WHERE:
Redesdale/Mia Mia Primary
School (Saturdays)
Redesdale Hall (Tuesdays
and Thursdays)

0402 018 783

A good life deserves the best farewell

**WILLIAM
FARMER**
FUNERAL DIRECTORS

Andrew and Heather Hampton

151 McCrae Street Bendigo
12 Victoria Street Eaglehawk

P: 5441 5577

www.williamfarmer.com.au

A tradition that continues...

Elphinstone

Post Office & General Store

*'In the heart of the
Elphinstone community'*



- Newspapers/ Magazines
- Origin Gas Bottles
- Bread • Milk & Groceries
- Postage Services

*'The General Store where
community meets business.'*

Gill & Dave (03) 5473 3200
9 Bateman Street, Elphinstone

Palmer Stevens & Rennick

Barristers & Solicitors *Founded 1852*

Palmer Stevens & Rennick

provide advice to clients all over Australia.

- Powers of Attorney
- Wills and Estates
- Criminal Law
- Conveyancing
- Property Law
- Commercial Litigation
- Family Law
- Migration Law
- Traffic Law and Toll Fines
- Agribusiness Law
- Pre purchase advice for large Agribusiness Assets
- Compensation for Government Acquisitions



Mr Joseph Palmer
Founder of
Palmer Stevens & Rennick

8 Jennings Street, Kyneton
or P.O. Box 1, Kyneton Vic 3444
Phone: (03) 5422 6500 Fax: (03) 5422 3385
Email: psr@psr.net.au

REDESDALE

General Store



Come in for some
great tasting...



"Great service in a country
environment from
Dino and his friendly team"

OPEN 7 DAYS

DINO

Phone (03) 5425 3154
2609 Main Road, Redesdale

RK Earth

Ross Knight Earthmoving

Servicing Mia Mia, Redesdale, Heathcote & District



**'Dam construction, erosion works,
building sites and general earthworks'**

Over 40 years experience in the district

Phone **Ross 0428 843 988**

or the office: (03) **5425 5506**

Email: info@rkearth.com

Web: rkearth.com