

# Bridge Connection

Barfold, Baynton, Derrinal, Elphinstone, Glenhope, Heathcote,  
Kyneton, Langley, Mia Mia, Metcalfe, Redesdale, Sidonia, Sutton Grange.



Edition 48

November 2013

A community owned newspaper

## Visitors found Redesdale festive and fun

**By Kate Hicks**

Redesdale found a winner when its inaugural 'Discover Redesdale' festival enjoyed a strong start with the hall committee art show on Friday 1 November.

More than 150 art works and sculptures were on display.

Fifteen art works were sold during the Friday opening exhibition.

The youngest exhibitor was Nicky Azzopardi, 14, whose work 'The Escape' received favourable comments from some of the more experienced artists.

Saturday events included a gourmet lunch at Rupert's Ridge Estate, a local winery and bed and breakfast retreat on a hilltop along Siddles Road, with 360 degree views across an area from the McHarg Ranges to the east.

Rupert Ridge's Chris Gillies said 70 adults booked for lunch.

"We also had 30 children and 25 dogs, but I forgot to order in gourmet dog biscuits.

Visitors from Mornington Peninsula, Tom Moore and Sue Mackinnon, said they enjoyed the view, the food and wine, and loved the opportunity to bring their dog along for a day out.

Lena Kostiuk and Goran Temel were first time visitors to Redesdale.

They described Redesdale as a hidden gem.

Goran said he was familiar with the Kyneton area but this was his first visit to Redesdale.

"I had no idea the countryside was so beautiful.

"We'll be back, but next time we'll stay here and explore some more," he said.

"It is so peaceful, the views are stunning, and the silence is heavenly," said Lena.

Organiser, Gloria Pocock, said planning for the Art Show started two years ago.



**Redesdale Hall Committee Art Exhibition facilitator Gloria Pocock, was pleased with this painting by Col Brown. The exhibition was an integral part of the inaugural 'Discover Redesdale' Festival.**

"What has been so pleasing about the festival is the enthusiasm from all sections of the community.

"We have farmers, artists, local photographers, winemakers, school children, parents, and tree changers.

"Everyone has been involved, and their enthusiasm has been so welcome."

Photography exhibition facilitator Kathy Hall said putting the exhibition together was a fantastic experience.

"We all gained from the community interactions along the way.

"We met many new people, forged relationships across existing community groups and have a much better understanding of each other's knowledge and

skills."

"This inaugural festival tested the water.

"One measure of success was the number of people who attended the 16 events on offer over the full festival.

"An equally important measure of success is the involvement of so many people across the community, including children at the Redesdale-Mia Mia School, who showed visitors their wetlands area, their art, project work, and produce garden."

Fifty two framed photographs from eight photographers, were on display in the exhibition held at The Rural Cafe opposite the Hall.

**Photos pages 8 and 9.**

# Switch mobiles off while driving

Drivers caught using mobile phones face a \$433 fine (up from \$289) and the loss of four demerit points, up from three points. Public Transport

Minister Terry Mulder said the government would be tougher on mobile phone use while driving because taking eyes off the road for just two sec-

onds to answer a call or read a text message could kill.

He said new regulations involved some of the most significant changes to road rules in years and reflected the growing problem of distraction, which has the potential to result in deaths and injuries on our roads

"We want to see using mobiles while driving become as unacceptable as drink driving.

"We want parents to talk to young drivers about not starting the habit, and we want people who do it now to stop. "Young drivers are the most vulnerable road users and although they face extra challenges because they have grown up with mobile phones, we plan to take away the temptation to use them while driving," he said.

## Index

|                                                      |         |
|------------------------------------------------------|---------|
| Flower show started a blooming festival.             | Page 3  |
| Emergency Relief Handbook.                           | Page 4  |
| Australia Day nominations.                           |         |
| Melbourne tunnels to be closed.                      |         |
| Campaspe Valley Landcare battles Texas Needle Grass. | Page 5  |
| Induction of Reverend Ian Davis.                     | Page 6  |
| Vale Jamie Golden                                    |         |
| Bendigo Hospital Project in good health.             |         |
| Not for profit groups cashed up.                     |         |
| Ready for never ending war (Mia Mia CFA).            | Page 7  |
| Festival Photos.                                     | Page 8  |
| Festival Photos.                                     | Page 9  |
| Heathcote skate park officially opened.              | Page 10 |
| Heathcote Calender.                                  |         |
| Redesdale CFA info night.                            |         |
| Bendigo council pools open.                          | Page 11 |
| Presentation Sister Camino walks Camino.             |         |
| Last Man Standing.                                   |         |
| Before and after photographs.                        | Page 12 |
| Editorial.                                           | Page 13 |
| Diary Dates.                                         |         |
| Rainfall.                                            |         |
| Christmas greetings.                                 |         |
| Mia Mia CFA photographs.                             | Page 14 |
| Loddon Murray Leaders.                               | Page 15 |
| Discover Redesdale.                                  | Page 16 |

## Bridge Connection Editor

The Bridge Connection has been in limbo while looking for a new editor.

We think we are well on the way back to establishing a monthly publication and hope to emulate the high standard set by founder and retiring editor Bernie Campbell.

Our new editor, Jim Mynard, who recently retired from the cut and thrust of working for bigger commercial newspapers, has taken up the challenge to keep the Bridge Connection in publication.

Jim is an experienced journalist, photographer, and editor, who has worked for several large newspaper companies and at one stage owned his own weekly newspaper.

He is a Paul Harris Fellow and a great believer in community newspapers.

Our little newspaper relies on advertising support to survive and we believe we can produce a paper that will serve our community well.

Mary Bennett,  
President, Bridge Connection.

Bridge Connection profits are returned to the community

## Bridge Connection Advertising Rates Schedule

The page is quarto by four columns.

Black and white (Mono).

|                    |                       |                            |                                   |
|--------------------|-----------------------|----------------------------|-----------------------------------|
| Full page:-        | (17.5 cm by 26 cm).   | Single placement \$150.00. | Booking for 12 editions \$1500.   |
| 1/2 page:-         | (17.5 cm by 12.5 cm). | Single placement \$93.75.  | Booking for 12 editions \$937.50. |
| 1/3 page:-         | (12cm by 12cm).       | Single placement \$75.00.  | Booking for 12 editions \$750.00. |
| 1/4 page:-         | (12.5 cm by 8.5 cm).  | Single placement \$50.00.  | Booking for 12 editions \$500.00. |
| 1/8 page:-         | (8.5 cm by 6 cm).     | Single placement \$31.25.  | Booking for 12 editions \$312.50. |
| 1/16 page:-        | (7cm by 4.5cm).       | Single placement \$22.50.  | Booking for 12 editions \$225.00. |
| Business card size |                       | Single placement \$25.00.  | Booking for 12 editions \$250.00. |
|                    | (3cm by 3clms)        | Single placement \$50.00.  | Booking for 12 editions \$500.00. |
|                    | (3cm by 4clms)        | Single placement \$56.25.  | Booking for 12 editions \$562.50. |
| Front Page strip   | (17.5cm by 2cm).      | Single placement \$62.50.  | Booking for 12 editions \$687.50. |
|                    | (8.5cm by 2cm).       | Single placement \$35.00.  | Booking for 12 editions \$385.00. |

Line on advertisements 10 cents a word – minimum charge \$3.

Back cover surcharge 20 per cent.

Page Three surcharge 10 per cent

Running a business without advertising is like winking at a girl in the dark

# Flower show started a blooming festival

The Mia Mia Flower Show and Lunch held on Thursday 31 October set the scene for a successful inaugural 'Discover Redesdale' festival.

The flower show provided a glorious display of colours and scents following a good growing season.

Many regular patrons were among 60 guests, but there were also some first time attendees. Success of this event opens the way for an ongoing annual festival for the district.

Jan Cossar came along with five of her Melbourne yoga group for their first visit to Mia Mia.

Jan said they loved the colours of the scenery, the rolling hills, the delightful hall, and excellent food.

Judy Campbell caught up with old friends Beryl Boyer and Judy Knight.

"We can't quite recall the number of flower shows we've been to at Mia Mia," said Judy.

"We were not old enough to be at the early ones, but we have most likely been to at

least twenty each.

"I do remember one of the first shows I attended; it was a chicken and champagne lunch and we all had a great time.

"My husband, Humphrey, and I really enjoy the atmosphere and the community spirit of Mia Mia.

"Everything that Mia Mia does is well done, and well supported."

Humphrey and Judy now live in Woodend.

For Beryl Boyer, the attraction of returning to Mia Mia for the Flower Show was summed up in one word, 'nostalgia'.

The Mia Mia Flower Show activities have remained much as they were when the event began in 1934.

The judging categories and the cards that award winners receive, have had little change. When the Hall curtains, possibly the same ones that were there in 1934, are drawn back to display a vivid collection of beautiful flowers and scents, it is just like it

*By Kate Hicks*

would have been in 1934.

Remarkably, not one mobile phone was heard to ring during the almost three hour event. Helen Bennett was overall winner of the Flower Show, which is in keeping with tradition as the Bennett name has appeared on the prize cards since 1934.

Helen's score across several categories was 31 points and Runner up Wendy Hulls 16 points.

In the produce section, the winners were Wendy and Grant Hulls, and the runners up were the young gardeners from Heathcote Primary School's Stephanie Alexander Garden.



*Betty Sageischek was a happy raffle winner at the flower show*

## IMPORTANT MESSAGE

Submission of copy to  
*Bridge Connection*

In order to relieve the load on our previous editor,  
Bernie Campbell,  
would contributors please send copy to  
The Editor

[mynardmedia6@bigpond.com](mailto:mynardmedia6@bigpond.com)  
or by mail to Bridge Connection,  
453 Bourke Rd, Katamatite, 3649  
Ph 0417 567 741

# Emergency Relief Handbook updated

The Victorian Emergency Relief Handbook, which is the key guide for local councils and other agencies offering relief and recovery support during a major emergency has been updated to meet new regulations in emergency services.

Parliamentary Secretary for Families and Community Services Andrea Coote launched the handbook on behalf of Community Services Minister Mary Wooldridge.

Mrs Coote said Fire Action Week reminded us that without effective planning, natural disasters such as fire, storms or floods could wreak havoc on communities, including damage to property and infrastructure, and even cause tragic loss of lives.

"As part of our preparation to help Victorians, the Coalition Government worked with the Australian Red Cross to develop a new edition of the handbook.

"This is a key reference for

guiding emergency relief operations at local and regional levels, especially for municipal councils and other agencies providing services such as personal registration, food and water, non food items, emergency shelter, and health and wellbeing."

The handbook takes into account the latest reforms in emergency management practices and structures across Victoria, with new or expanded sections on effectively communicating with disaster-affected communities.

It advises on helping specific groups affected by a disaster, particularly children and teenagers; psycho-social support, as well as public health, first aid, primary care; and the role, welfare and importance of companion animals.

Mrs Coote acknowledged the local government sector for its feedback and advice as part of the review and re-writing process and congratulated the project team from Health and

Human Services Emergency Management and the Australian Red Cross for producing the handbook.

The Emergency Relief Handbook is available at [www.dhs.vic.gov.au](http://www.dhs.vic.gov.au)

## Melbourne tunnels closed during holidays

Melbourne's Domain Tunnel will be closed from 10pm on Friday 27 December to 5am on Tuesday 31 December with the West Gate Bridge inbound fully closed on Friday 27 and Saturday 28 December between 11pm and 7am.

Burnley Tunnel will be closed from 10pm, on Thursday 2 January to 5am on Tuesday 7 January with the West Gate Bridge outbound closed from Thursday 2 January and Friday 3 January, between 11pm and 7am.

Roads Minister Terry Mulder said the tunnels and bridge would undergo a vital facelift involving extensive resurfacing.

## Australia Day Award nominations for Mitchell Shire

Nominations are open for Mitchell Shire Australia Day awards until 5pm on Friday 6 December 2013.

Awards will be presented on Sunday 26 January 2014.

Nominations are invited for the following categories:

(i) Australia Day Citizen of the Year for an individual aged 25 years and over on Sunday 26 January 2014.

(ii) Australia Day Young Citizen of the Year for young people aged under 25 years on Sunday 26 January 2014.

(iii) Community Event of the Year for any community group or individual who organised and ran an outstanding community event during 2013 that encouraged community participation and social cohesion.

(iv) Access and Inclusion Champion Award to recognise people with or without a disability working in a voluntary capacity to improve access and inclusion for people with disability within the Mitchell Shire.

If you know someone who deserves to be recognised for their work in our community, now is the time to nominate.

Further information is available from the council's governance unit on 5734 6200 or visit Council's website [www.mitchellshire.vic.gov.au](http://www.mitchellshire.vic.gov.au).

## Advertising sales person needed

This is a commission based position to service Bridge Connection clients.  
Generous commission.

Please contact 0417 567 741

## Bridge Connection Inc.

Management Committee.

|            |                                                                          |              |
|------------|--------------------------------------------------------------------------|--------------|
| President; | Mary Bennett                                                             | 03 5425 5551 |
| Secretary; | Regina Bennett                                                           | 03 5425 5402 |
|            | <a href="mailto:reginabennett@bigpond.com">reginabennett@bigpond.com</a> |              |
| Treasurer; | Terry McKenzie                                                           | 03 5425 3262 |
|            | <a href="mailto:tezzamack@bigpond.com.au">tezzamack@bigpond.com.au</a>   |              |

**Advertising 0417 567 741**

Editorial:- Jim Mynard 0417 567 741 Anytime.  
[mynardmedia6@bigpond.com](mailto:mynardmedia6@bigpond.com)  
Hard copy to 453 Bourke Rd, Katamatite 3649  
Distribution 800

Founders Berni and Brett Campbell.

## Distribution

800 printed copies of Bridge Connection are circulated in the Mia Mia Redesdale Region taking in Barfold, Baynton, Derrinal, Elphinstone, Glenhope, Heathcote, Kyneton, Langley, Metcalfe, Sidonia, Sutton Grange.

Please consider the Bridge Connection to send out your message

# Campaspe Valley Landcare battle to eradicate Texas Needle Grass

Campaspe Valley Landcare members attended an identification day for Texas Needle Grass (TNG) on Saturday 19 October and discussed the spread of the weed in the Barfold, Langley, Redesdale

## Community exchange market at Kyneton

Macedon Ranges Community Exchange will hold its second market day from 10am to 11am on Sunday 8 December at Piper Street, Campaspe Park, Kyneton.

This might be the place to find something special for your friends and family for the festive season.

Phone Linda 0421999 228 for further information regarding the community exchange and just how it can change the way you trade in the local area.

and Mia Mia areas.

The weed is very prominent along the Campaspe River and has also invaded properties and roadsides.

The Landcare Group is mapping the location of TNG to gain support from Shires, and catchment groups.

Environment officers from Greater Bendigo, Mount Alexander and Mitchell Shires attended the workshop and spoke to residents.

Representatives from Connecting Country and Upper Campaspe Landcare Network also supported the Field Day. John Walter from Malmsbury Landcare presented an identification session and attendees then visited a nearby roadside where the weed is located.

Mapping is progressing and a further day was held on Sunday 10 November, at the Barfold Hall. Residents can

notify the group of a Texas Needle Grass or Chilean Needle Grass location by phoning Campaspe Landcare president, Phillip Don, on 5423 4 182.



**Campaspe Valley Landcare Group members Phillip Don, and Barbara James, took their case to the 'Discover Redesdale' Festival with a stall.**

**REGIONAL VIC  
FARM SERVICES**  
ABN: 27 360 129 893

**ecoblade®**

The cutting Edge in weed control

For all your weed control work ask John Baulch



**Eco Blade – cut and paste your woody weeds and mulch the residue at the same time.**  
**Spot spraying – to reach all those hard to get areas**  
**Boom spraying – for your pasture needs**

Phone: John (03) 54235151

# Induction of Reverend Ian Davey at Heathcote Uniting Church

The Big Band played as the Reverend Ian Davey was inducted into the Uniting Church Ministry of the Word, at 7.30pm on Friday 15 November 2013.

The Heathcote Parish includes Heathcote, Tooborac, Costerfield, Emu Flat, and Toolleen.

John and Diana with their guitars, Louise on electric piano, Gayle on keyboard, Sue with maraccas and Bronwyn, leading the way with flute, led singing with 'Where Wide Sky Rolls Down' one of the new Australian hymns of the twentieth century.

Twenty first century man, Ian Davey, had been in Heathcote for 18 months, opening the Church meeting room on Monday and Wednesday mornings for coffee and meeting people.

A lively group of men enjoy discussions of deeper issues in a most informal manner.

Ian has a talent for acting, introducing humorous sequences for the children, on Sunday mornings.

Ian meets individuals on their own territory, one older mem-

ber saying: "It is quite simple. Ian is a good man."

Folk from his former Church in Melbourne came for Ian's Induction, together with St. Mary's Catholic Church priest; Father Anthony, Heather Zakrzewski from St. John's Anglican Church; and young women from The Word of Faith Church.

Coming from a background of teaching children with deafness and a variety of disabilities Ian has always had a feeling for people outside the mould, leading him to a Ministry for homeless people in Melbourne.

Already, in Heathcote, Ian has reached out beyond the Uniting Church to people in a range of situations.

The Induction Service was a magnificent occasion, highlighted, not only by the music, but the glorious flowers arranged by Marion Hollingsworth, who recently won major prizes at the Heathcote Show; reading of scriptures by Joan Lang of Heathcote and Sue Hayes from Emu Flat.

By Louise Joy

Reverend. Michele Lees from Castlemaine preached on 'The Good Shepherd', which Ian is commissioned to be. Michele remembered her husband's first sermon on the lost sheep in the Heathcote Church when farmers in the congregation came up to him afterwards and said he did not know anything about sheep. After Ian's commissioning, members of the Heathcote

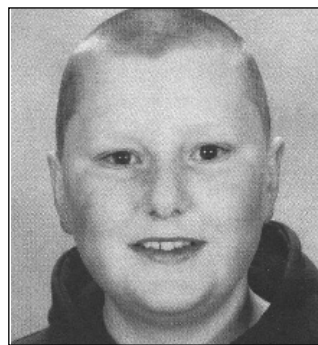
Uniting Church; from Presbytery; and ecumenical colleagues were invited to offer the right hand of fellowship to the newly inducted minister.

As Ian moved to the centre of the Church, he was surrounded by members who will be there for him in his daily labour.

Ian's wife, Gayle, companion and helpmate, was given a huge bouquet of flowers.

## Vale Jamie Golden

The Bridge Connection committee has expressed condolences to the family and



friends of Redesdale's James Golden who died accidentally on Wednesday 13 October 2013. Jamie was loved and his loss is difficult to understand, but words in his memorial maybe tell us how it is.

*"There is a place in our hearts that is yours alone, a piece of our lives that no one else can own. The tears in our eyes we can wipe away, but our memories of you will always stay."*

## Not for profit groups cashed up with well being grants

Sixty six local non profit community groups will benefit from round one of the 2013/14 City of Greater Bendigo Community Grants Program.

A record number of 119 applications were received across seven categories, including 17 applications for the new Healthy Communities category, Arts and Culture; Community Development; Community Events; Community Newsletter; Environmental Sustainability; Healthy Communities; and Recreation.

Community Wellbeing Director Pauline Gordon said the City was pleased to distribute \$178,370 among the successful community groups, schools, early learning centres and sporting clubs that applied for funding.

"The successful applicants will be able to look forward to introducing or continuing to implement a range of positive initiatives, purchase new equipment or hold an event that will benefit Greater Bendigo's residents and environment.

"All successful round one projects must have started after Friday 1 November and be completed within a year.

"Applicants that missed out this time are encouraged to apply again when round two applications open early next year.

"It is a competitive process, but if you make slight improvements to your application and provide additional information it may make all the difference," Ms Gordon said.

## Bendigo Hospital project in good health

The Bendigo Hospital project has so far met all financial requirements necessary for a Public Private Partnership (PPP).

Health Minister David Davis said the \$630 million project was the largest hospital development undertaken in regional Australia, and would deliver better health outcomes for families in Bendigo, the Loddon-Mallee region, and northern Victoria.

"The hospital will be one of the most advanced regional health facilities in Australia.

"The project has a total value of more than \$1 billion over 20 years," he said.

The project is being delivered

as a PPP in accordance with the Government's Partnerships Victoria framework.

It will include 372 inpatient beds; an 80 bed psychiatric unit including a five bed mother and baby unit; 72 same day beds; an integrated cancer centre; 10 operating theatres; and four radiation therapy bunkers, with the capacity for a further two bunkers in the future. The hospital is on schedule for completion by December 2016.

"Ancillary and commercial components, the helipad, multi-storey car park, conference centre, and retail areas will be completed by June 2018," Mr Davis said.

# Ready for the never ending war at home

*By Kate Hicks*

The opening of a new fire station in Mia Mia and the delivery of a new tanker to the Mia Mia Fire Brigade has boosted firefighting capabilities in Central Victoria.

Police and Emergency Services Minister Kim Wells opened the new fire station on Sunday 13 October.

More than 120 Mia Mia community, friends and CFA dignitaries, inspected the station and the new tanker after being entertained by the City of Greater Bendigo Brass Band.

Two Melbourne based choirs who are long term supporters of Mia Mia brigade and who helped raise the funds that the community needed to qualify for the new tanker, entertained the community with songs of welcome and the joy of living. Mia Mia Rural Fire Brigade was formed in 1927, officially became part of the CFA in 1944, and currently has 78 members of which 38 are operational members.

It has an area of responsibility of more than 30,000 hectares east of Bendigo,



**From left: Police and Emergency Services Minister Kim Wells, Rodney MP Paul Weller, CFA's Sharon Maloney, and Mia Mia CFA Captain Anthony Ryan.**

one of the largest fire areas in the state. More than 100 people attended the launch of the new Mia Mia Brigade station.

The brass band played, the ribbon was

cut and the new light tanker rolled out of the new station. Lorraine Ryan co-ordinated a large number of volunteers who provided an excellent food spread to celebrate the event.

*More photos page 14*



## Bendigo Aged Care Connection Services Offer:

- \* Home Care
- \* Personal Care
- \* Pet Care
- \* Mowing
- \* Gardening
- \* Shopping and meal preparation Assistance
- \* Outing and Appointment Assistance
- \* Aged Care Advice
- \* Financial Advice with professional Financial Planners
- \* Discreet and Personal Incontinence products and delivery Service

www.baccs.org  
**Contact Corina on**  
**0412 693 415**



## IF YOU ONLY DO ONE THING THIS FIRE SEASON

Speak to CFA Monday  
 9th December in Redesdale

**What:** Free Fire Ready Safety Information

**Where:** Redesdale Hall - 2631 Kyneton - Heathcote Rd, Redesdale

**When:** 7.30pm Monday 9th December 2013

**Find out:** Must-have bushfire information for this season

**For more information:** CFA District 18 Office (1800 820 118)

Don't understand English?  
 Require an AUSLAN interpreter?  
 Need assistance to access the venue?  
 Let us know and we'll do our best to help.

If you belong to a community group or club, talk to us about arranging a customised session.

Please note that CFA postpones all community meetings when the fire danger Rating is Code Red. Extreme or Severe



PREPARE. ACT. SURVIVE.  
**FireReady**

cfa.vic.gov.au/meetings





**Prize winning red rose**

**Bowler Simon Lew sends one down for Coliban Colts while Martin Leahy watches for a run for Campaspe Crows.**

**Above. Rupert's Ridge Estate visitors Tom Moore and Sue Mackinnon.**

**Left. Flower judges: Annie Allen, left, and Lisa Robinson.**

**Below. From left: Working at the art show. From left: Jill James, Gloria Pocock, Mable MacLatchey, and Joyce Newton.**



**Above. Annette Coombe displays her leather craft. Right. Kathy Hall with two of her entrants in the photographic exhibition.**



**Above. Guest speaker James Pethybridge from Blackwood Nursery was a font of wisdom on how to grow perennials. Right. From left: Beryl Boyer, Judy Campbell, and Judy Knight. Above right. From left: Flower show organisers. From left: Daphne Hall, Jenny Dempster, Kel Hall, Tas Johnson, and Helen Bennett.**







**Redesdale-Mia Mia school children were on hand to show visitors their wetlands area, their school projects, and their produce garden. From left: Bryce Broadbent holding Lily, Tyler Sundblom, Reegan Sundblom, Jorga Bennett, Connor Munro, Max Patros, Nick Broadbent, and Zoe Patros, with Acting Principal Sally Gill.**



**Redesdale Hall Committee Art Show facilitator, Gloria Pocock, with a painting, 'Escape', by Nicky Azzopardi, 14.**



**Above left. Preparing Rupert's Ridge gourmet lunches. Above right. The Mia Mia history exhibition created considerable interest. From left: Mary Bennet, of Mia Mia, Inez Blackwell, Goornong, Jim Coombe, Mia Mia, and Ebony Campbell, of Goornong. Below. The Redesdale Hall's new barbecue was fired up for the first time for the 'Discover Redesdale' Festival. Volunteers are from left: Ronn Taylor, Les Pocock, Tasman Johnson, and Russell Evans.**



## ACUPUNCTURE & CHINESE MEDICINE

FOR  
Injuries  
Back pain  
Stress  
Anxiety  
Depression  
Colds & Flu

Infections  
Periods  
Menopause  
Prostrates  
Pregnancy  
Childbirth  
Children & Infants

*and much more ....*

**Elizabeth Hannah**

govt. registered acupuncturist.

0403 753 221

bethan.acup@westnet.com.au



Kyneton Acupuncture & Allied Health  
5/50 Mollison St., Kyneton

# Heathcote skatepark officially opened

City of Greater Bendigo (COGB) Manager Active and Healthy Communities Patrick Jess said the Heathcote Skate Park development was a key priority of the Heathcote and District Community Plan.

Mr Jess said the City was pleased to have worked with residents to turn the idea of a

skate park into reality.

"The project was a joint initiative developed in conjunction with Heathcote Lions Club, which contributed \$10,000, and Heathcote Health, which contributed \$25,000, and included a generous donation from David Barnes in memory of his

mother.

"Young people were also involved in every step of the precinct's development and worked with former World Number One BMX champion Ash McCutcheon to create a magnificent BMX track with many hidden features for young, skilled, and advanced

riders.

"They also helped to choose the skate park's shelter design and furniture.

"Their input led to installation of tables and benches you can also skate on; even the retaining wall has a skating rim.

"All involved are to be commended for their efforts to design a great community asset with a lasting benefit for the region," he said.

Cost of the three stages was \$221,500 and the City contributed \$186,500.

The old council depot was transformed into a skate park featuring quarter pipes, steel balustrades, a transition platform and slide rails.

The second stage involved building an accessibility pathway to connect Heathcote Hospital with Camp Street in 2011, and the BMX jumps track was added earlier this year.

Stage three was completed in September when a shade shelter, seating, picnic tables and a retaining wall were installed and the existing skate park was extended.

## Heathcote Social calendar

### **Sunday 1 December:-**

Flamenco Mass will be held at St Mary's Catholic Church at 9.30am. All welcome. Spanish Lunch - Paella lunch and Spanish Flamenco dancing at RSL Hall. 1pm until 5pm. \$18 Adults, \$5 Children under 12. Please book for catering purposes. Tickets are available soon from Heathcote Visitor Centre.

### **Monday 2 December:-**

Heathcote Artists final day of the members Art Show at the Heathcote Gallery (rear of City of Greater Bendigo office). Entry is free and all work is available for sale.

Come in and see what your local artists have been working on.

### **Saturday 7 December:-**

Bush Market: 8am to 1:30pm. Contact Ian Owen on 0431 733 109 for bookings for stall at the market in Barrack Reserve High Street, Heathcote

### **Saturday 14 December:-**

Carols in the Park from 7pm for 7:30pm start. Santa will visit, a band, community carol singing with local schools participating, Christmas tree, bring a chair and picnic meal. Event arranged by Lions Club of Heathcote

and City Greater Bendigo. Venue: Barrack Reserve High St Heathcote

### **Saturday 21 December.**

Heathcote Region Farmers Market - 9am to 1pm. Selling a wide variety of fresh seasonal foods grown locally or regionally. More information is available from Sherrie Coote on 0417 598 460 or email: zuheros@bigpond.com Barrack Reserve Park High Street, Heathcote.

## Diary dates for 2014

### **Wednesday 22 January:-**

Play in your Park Barrack Reserve.

### **Saturday 15 February:-**

Outdoor Cinema. Barrack Reserve.

### **Wednesday 19 February:-**

Play in your Park Barrack Reserve.

### **Friday 28 February to Sunday 2 March:-**

Sanguine Estate Music Festival.

### **Friday 14 to Sunday 16 March:-**

Spanish Festival Weekend.

### **Saturday 7 to Monday 9 June:-**

Queen's Birthday Weekend.

### **Friday 29 August to Sunday 31 August:-**

Heathcote Film Festival.

### **Saturday 4 and Sunday 5 October:-**

Wine and Food Festival Weekend

## Redesdale CFA information night

Redesdale CFA will conduct a fire prevention information session in the Redesdale Hall at 7.30pm on Monday 9 December.

The brigade has congratulated residents along North Redesdale Road, who undertook fire prevention work along the road reserve.

"Well done!"

Fire restrictions are expected to be introduced on Monday 2 December.

The brigade has encouraged residents to continue clearing away material that could enhance a fire.

## Rural Women's

### Morning Tea Group

10.30am

second Thursday of each month  
@ Redesdale General Store

## Dates

Thursday 12 Dec

A great way to  
connect with fellow  
community  
members over  
a cuppa!

ALL WELCOME

# Bendigo council pools open, improved, and ready for summer

The City of Greater Bendigo's Kangaroo Flat, Marong, and Brennan Park, swimming pools are open for the summer season.

City of Greater Bendigo Manager Active and Healthy Communities Pat Jess said the city attempted to open the pools earlier than it had in previous years, but had experienced minor delays because of works.

"Unfortunately rain delayed the application of a second coat of paint to the 50 metre and diving pools at Brennan

Park and works to empty, deep clean, refill and chemically balance the Kangaroo Flat and Marong Swimming Pools for water quality purposes had taken longer than expected.

"Swimmers will however, notice facilities at local pools have been greatly improved with the City investing \$500,000 in maintenance works across all pools this financial year," he said.

Works at Brennan Park included painting the 50 metre and diving pools, electrical

upgrade works, plumbing works, repairs to shade structures, installation of new doors and fittings in change rooms, fence repairs, installation of a new chemical safety shower and tile replacement in the toddler's pool.

The City has also painted light poles and shade sail posts, top dressed the lawns and lifted tree canopies. At the Bendigo Aquatic Centre new lane ropes were installed, improvements made to the irrigation system and chemical dosing and control system.

Security was upgraded and tree safety works undertaken. The Heathcote Pool has had new signage installed and the wet deck on the main pool replaced.

The change rooms were repainted, tiles replaced, and stainless steel hand rails installed.

A new irrigation system, new signage, new turf was installed, and electrical safety works undertaken at the Marong Pool.

New depth signage has been installed at Kangaroo Flat.

## Heathcote U3A activities

### **Chair based exercises.**

Every Friday of the month except the last. Guide Hall at 10.30am.

### **Music appreciation group.**

First Tuesday of the Month. Guide Hall at 2pm.

### **Understanding new technologies.**

First Thursday of the Month. Guide Hall at 10am.

### **Antique collectables and curio Group.**

First Monday of the Month. Guide Hall at 1pm.

### **Garden Club.**

Third Wednesday of the Month. Guide Hall at 1.30pm.

### **History Group.**

Third Thursday of the Month. Guide Hall at 10.30am.

### **Luncheon Club.**

Third Friday of the Month. Guide Hall 11.30am.

### **Morning Tea Day.**

Last Friday of the month. Various venues at 10.30am.

*Some with a guest speaker.*

Further information is available  
in the U3A newsletter

available at the Visitor Information Centre, The Hub, (council offices), the Library, or contact us on  
5433 2925 or 5433 3649  
and email: [u3a.heathcote@gmail.com](mailto:u3a.heathcote@gmail.com)

## Presentation Sister tells of Camino walk

*By Louise Joy*

Carboon is a noted name around Heathcote.

None more so than Helen Carboon, a Presentation Sister from age 18, who returned to speak at St. Mary's Guild in the O'Dee Centre, on Wednesday 20 November.

She spoke about her experiences walking the Camino.

Helen had practiced around Heathcote for this gruelling 42 day walk through France and Spain. She is a diminutive 61 year old, full of humour, organisation and energy.

Helen's friend took a camera but she decided to go with the experience, bringing along to show us her walking sticks, sleeping bag with fine circular sheet, sturdy red jacket and boots, the equipment of pil-

grims.

Walking, eating, washing, each long day was a simple routine, the pilgrims feeling their unity and at the end of the day knowing their inner Camino.

'The Way' was the film which brought the Camino, a tradition of a thousand years, to the forefront again in the 1980s.

An invitation from St. Mary's Guild to Uniting and Anglican Churches, made this a real Heathcote community occasion. Roma Carboon, Helen's mother, was on duty with the door prize and raffle tickets, great prizes being won after everyone had joined in word games. Sandwiches, curled and layered; cream cakes and horns and slices; no Heathcote event would be complete without a magnificent afternoon tea.

## Farmers' markets are a sign of the times

Farmers' markets are fantastic places to shop, but when Christmas comes around they are places where shoppers can buy local for fresh high quality ingredients for special meals. Delicious handmade goods are in abundance for Christmas stockings.

Pasture grazed meats - beef, pork, Christmas hams, organic turkey, goat, lamb and chicken. Organic and spray free vegetables are for sale. Fine regional wines, handmade cheeses, small-

goods and snacks. Taste the difference when you buy fresh and local.

Gift ideas include; award winning Macedon Ranges, Heathcote and Sunbury region wines, fresh pressed extra virgin olive oils, preserves with flavour, cordials, cut flowers, rare plants, hand knits, quality honey, sweet treats, skin care items, and essential oils. Macedon Ranges Farmers' Markets host many local farmers and producers each week.

## Last man standing

Tickets for the Redesdale CFA Last Man Standing contest will soon be available. The battle will be held at the Redesdale Hall on Australia Day, Sunday 26 January 2014.

# Before and after photographs record history

**By Jil James**

It is interesting to see how little change occurs in 100 years. We plant trees and every year applaud their growth, but the long haul to maturity is really very slow. This was brought home to us when Neil Peck, the great

grandson of Charles Nettleton, called in to photograph a scene taken in 1878-79. We were able to identify the exact location and he then took a photo from the same place in November 1984. In 105 years the trees are easily recognisable, but somewhat thicker in the girth, like us all. (See

below). The interesting thing is that the Victorian Government in those early days appreciated how marketing could enhance the tourist industry and importantly increase the use of train travel. Photographers were sent out to capture 'beauty spots', which were then displayed in the railway carriages. Mr Nettleton must have been remarkably intrepid as among other places he visited, with his heavy load of photographic equipment, is the still almost impassable site of Wonnangatta Station, taken up in 1860 and only accessible by pack horse for the next

100 years.

While in this area, Neil Peck showed us photographs of Sutton Grange, Turpin Falls, Castlemaine, and Kyneton, all taken by his great grandfather. Our family bought Coliban Estate in 1920 and it is now run by our son Tom James. My husband Brian, and I live in a 'new' house on the same site as the house in the photo. The original was eventually destroyed by white ants, but prior to that disaster a new homestead had been built in 1926. Until its demise the original house was used as shearers' huts.

## FOR SALE

**OWNERS**  
**0429 957 184**

*'Campbell's'*

**1395 acres / 564.54 hectares**

*As a whole or in separate allotments*

Allot 1: 248 acres   Allot 3: 438 acres   Allot 5: 28 acres   Allot 7: 31 acres  
Allot 2: 371 acres   Allot 4: 119 acres   Allot 6: 160 acres



**SUPERB INVESTMENT / FARMING OPPORTUNITY**

14 titles  
Improved pastures

Excellent water storage  
Stunning views

**MAP**



**OWNERS**  
**Berni and Brett Campbell**

**0429 957 184**



# DyslexiClever

Macedon Ranges

- Empowering out-of-the-box thinkers

**Dyslexia Support Group**

Meets 9am first Friday of the month @ Ethic. Café 63 Urquhart Street, Woodend.

Enquiries: Marg 0409 550 238 - or just come along!



**0409 550 238**

dyslexiclever@gmail.com

# Diary Dates

## Tuesday 2 December.

Christmas Tea. 6pm Sutton Grange Hall.  
Sue 5474 8271/Nat 0419 799 987.

## Friday 6 December.

DyslexiClever (Dyslexia Support Group)  
9am at Ethic Cafe, Woodend.  
Marg 0409 550 238.

## Saturday 7 December.

Heathcote Bush Market. 8am to 1.30pm.  
Ian Owen 0431 733 109.

## Thursday 12 December.

Rural Women's Morning Tea.  
10.30 Redesdale General Store.

## Saturday 14 December.

Carols in the Park, Heathcote. From 7pm for  
7.30pm start.

## Saturday 21 December.

Heathcote Region Farmers Market.  
9am to 1pm. Sherrie Coote 0417 598 460

### School holidays begin.

**Sunday 22 December.** Summer Solstice.

**Wednesday 25 December.** Christmas Day.

**Thursday 26 December.** Boxing Day.

**Tuesday 31 December.** New Years Eve

## 2014

**Wednesday 1 January.** New Years Day

**Thursday 30 January.**

Chinese New Year's Eve. (Horse).

**Friday 7 February.**

DyslexiClever (Dyslexia Support Group)  
9am at Ethic Cafe, Woodend.  
Marg 0409 550 238.

**Friday 14 February.** Valentine's Day.

**Friday 7 March.**

DyslexiClever (Dyslexia Support Group)  
9am at Ethic Cafe, Woodend.  
Marg 0409 550 238.

**Saturday 8 March.** International Women's Day.

**Monday 10 March.** Labour Day

**Friday 4 April.**

DyslexiClever (Dyslexia Support Group)  
9am at Ethic Cafe, Woodend.  
Marg 0409 550 238.

**Friday 18 April.** Good Friday.

**Friday 2 May.**

DyslexiClever (Dyslexia Support Group)  
9am at Ethic Cafe, Woodend. Marg 0409 550 238.

**5 May** Japanese Children's Day.

**6 June** DyslexiClever (Dyslexia Support Group)

9am at Ethic Cafe, Woodend. Marg 0409 550 238.

**21 June** Winter Solstice.

**4 July** American independence Day.

DyslexiClever (Dyslexia Support Group)  
9am at Ethic Cafe, Woodend. Marg 0409 550 238.

**1 August** DyslexiClever (Dyslexia Support Group)

9am at Ethic Cafe, Woodend. Marg 0409 550 238.

**5 September** DyslexiClever (Dyslexia Support Group)

9am at Ethic Cafe, Woodend. Marg 0409 550 238.

**November**

State election.

# Editorial

## Redesdale found

Hidden talents often emerge when country and small towns hold exhibitions and competitions.

This happened when the Redesdale community held its inaugural 'Discover Redesdale' Festival.

The basis now exists for an ongoing annual festival that could draw thousands of people to Redesdale to provide a cultural activity and social outlet for visitors from a wide area.

Evidence of this was apparent when it was seen some visitors travelled from distant areas to be at the festival.

The message was out that something was on at Redesdale.

Think about the Tamworth Country Music Festival that began during the late 1960s as a talent quest and grew to be one of the top 10 music and culture festivals in the world.

Certainly an icon for Australia.

Redesdale, Mia Mia, and the wider areas, such as Heathcote and Kyneton, across the way, Trentham, and even Bendigo, could benefit from a growing festival at the rural hamlet of Redesdale.

What is happening here is what they call 'community building'.

That is bringing people together through social and cultural activities, leading to support groups and a feeling of general well being in a district, a way of life where people watch out for each other no matter what their status, religion, or nationality.

Like the language of music, the same for all, people all over the world, laugh and sing, and cry, in a language the same for all.

# Rainfall

## Baynton

| Jan       | Year   |
|-----------|--------|
| 0         | 0      |
| Feb 90.6  | 90.6   |
| Mar 27.4  | 118.00 |
| April 8.6 | 126.6  |
| May 42.2  | 168.8  |
| June 86.0 | 254.8  |
| July 87.6 | 342.4  |
| Aug 106.4 | *424.8 |
| Sept      |        |
| Oct       |        |

## Eppalock

| Jan       | Year   |
|-----------|--------|
| Jan 0     | 0      |
| Feb 50.4  | 50.4   |
| Mar 22.4  | 72.8   |
| April 5.5 | 78.3   |
| May 34.4  | 96.8   |
| June 35.1 | 145.6  |
| July 77.4 | 210.20 |
| Aug 59.8  | 285.0  |
| Sept 76.8 | 361.80 |
| Oct       |        |

## Mia Mia

|           | Year  |
|-----------|-------|
| Jan 0     | 0     |
| Feb 63.5  | 63.5  |
| Mar 24.5  | 88.0  |
| April 5.0 | 93.0  |
| May 63.0  | 156.0 |
| June 32.0 | 188.0 |
| July 78.5 | 266.5 |
| Aug 88.0  | 354.5 |
| Sept 83.5 | 438.0 |
| Oct 40.5  | 478.5 |

## Redesdale

|           | Year  |
|-----------|-------|
| Jan 0     | 0     |
| Feb 54.0  | 54.0  |
| Mar 28.5  | 82.5  |
| April 4.7 | 87.2  |
| May 24.3  | 111.5 |
| June 65.0 | 176.5 |
| July 63.0 | 239.5 |
| Aug 94.0  | 333.5 |
| Sept 79.0 | 412.5 |
| Oct 32.9  | 455.4 |

## Merry Christmas

and

## Happy New Year

The president and committee of

## Bridge Connection

extend best wishes to everyone  
for Christmas and the New Year





**Melbourne choirs Souffle Sisters and Homebrew Verandah Singers, long term supporters of the brigade, celebrate the event with songs of welcome and the joy of living. Below left. From left: Mia Mia's Max Patros and Jorja Bennett enjoyed balloons with Castlemaine comedian and entertainer TimTim, who kept young attendees entertained.**



**Right. TimTim's bubbles delighted young and old alike. From left: Max Patros, Jorja Bennett, and Ava Musters from Bendigo.**



**Lorraine Ryan co-ordinated a large number of volunteers who provided an excellent food spread to celebrate the event.**



## Barfold Beading

10.30am Thursday 12th September  
**\$10 per session—Barfold Hall**  
*Please bring along a plate to share!*  
**Marie 54234153**  
mnoonan@activ8.net.au





Pic  
Wel  
The



# Loddon Murray community leaders paving the way

Twenty three graduates from the 2013 Loddon Murray Community Leadership Program (LMCLP) celebrated their achievement with a dinner evening at the Port of Echuca. Guest speaker Hepburn Shire Councillor Catherine Redwood gave an inspiring account of her personal leadership journey.

She spoke passionately about regional communities and ensuring peoples' voices were heard. The evening was hosted by 2013 participants Craig Segat from Swan Hill, Kerry Meiers, Echuca, June Hopley, Bendigo, and Peter Church of Harcourt.

Participants Jay Smith and Karin Flynn shared some reflections on what the program meant to them.

Anna deVrieze and Yvonne Wrigglesworth provided a brief insight into their community projects.

Program coordinator Melinda Mann congratulated the participants presenting them with graduation certificates, while special guest Agriculture and Food Security and Water Minister Peter Walsh congratulated graduates personally.

## Beading Group to meet

The last session of the Beading Group for 2013 will be at the hall at 10.30am on Friday 20 December.

Please bring a plate of festive goodies to share, some Christmas cheer and any news, or babies!! for me to cuddle!

We shall be making a couple of Christmas decorations and some free time to make a pair of earrings to wear for Christmas. Hope to see you all there, cheers until then, Marie.



**2013 Graduates of the Loddon Murray Community Leadership Program**

Graduates represented eight shires from across central and north west Victoria.

They are Ardavan Abedian, of Flora Hill, Sue Allengame, Bendigo, Pamela Bethell, Kennington, Kyra Bethell, Golden Square, Bernadette Holland-Cozens, Bendigo, Karin Flynn, Woodvale, June Hopley, Eaglehawk, Melanie Newell, North Bendigo, Sharon Ritchie, Golden Square, and Yvonne Wrigglesworth, of Axedale, from the City of Greater Bendigo.

John Boyd, from Rochester, and Kerry Meiers, of Echuca in Campaspe Shire.

Maree Hughes, Donald, Anna de Vrieze, David Pollard, of

Charlton, in Buloke Shire.

Desiree Gardiner, from Wedderburn, Andrew Whatley, Boort, Jan Harper, from Shelbourne, in Loddon Shire. Janet Pearce, from Woodend, in Macedon Ranges Shire.

Craig Segat, Douglas Wood, from Swan Hill, in Swan Hill Rural City. Jay Smith, from Castlemaine, Peter Church, from Harcourt, in Mt Alex-

ander Shire. Wendy Turley, from Bealiba, in Central Goldfields Shire.

A limited number of scholarship places are still available for the 2014 Loddon Murray Community Leadership Program. Further information is available at [www.clm.org.au](http://www.clm.org.au) Or contact LMCLP Coordinator, Melinda Mann, on 5483 7551.

Please send news items about community groups to

The editor

Bridge Connection

453 Bourke Road, Katamatite 3649

email:

[mynardmedia6@bigpond.com](mailto:mynardmedia6@bigpond.com)

0417 567 741

## CONNOLLY GLASS

### 0428 535 101

177 LYELL ROAD REDESDALE VICTORIA 3444

Email. [chrisjen@bigpond.net.au](mailto:chrisjen@bigpond.net.au)

BROKEN WINDOW REPAIRS, MIRRORS,

BALUSTRADES SHOWERSCREENS: FRAMED,

SEMI FRAMELESS, AND FRAMELESS,

RETRO FITTED DOUBLE GLAZING

AND

COMMERCIAL WINDOW FRAMES AND GLAZING

# Discovering Redesdale

By Jill Nicol

The car increased speed as it left the city for the 110 kph highway.

Closer settlement gave way to fewer buildings until only the occasional farm house and out buildings caught our peripheral vision left or right. Eyes glazed over animals in the fields, identifying cattle from sheep, alpacas from horses, on look out for their well being, as they grazed in paddocks on harvested stubble, or fed from generous hay bales.

The turn off to Redesdale came, and we took the less beaten track, travelling up a hill to an immense vista of the countryside.

We descended along the road that stretched out, for mile upon mile, rising up and down, amid patchworked plains, and leading to the far horizon and a sky full of clouds.

Over yet another rise, we saw the sign for Redesdale, population, 307.

Slowing down, we passed a few buildings displaying banners, drove down the curved road and the Redesdale Bridge was before us.

Narrow but with two separated lanes, we drove slowly across, marvelling at the truss design, unaware that it had been part of Redesdale since 1868, and constructed from

iron lattice trusses salvaged from the sunken ship, 'Herald of the Morning' in 1859.

We took another curve up the hill, saw a sign to Bendigo and realised we had just left Redesdale.

We remembered the banners announced the 2013 festival, returned and pulled in at the Rural Cafe, which promised coffee and a photography exhibition.

The exhibition introduced much that was the environs of Redesdale, be it Flooding Plains, Pink Ladies Under the Covers, Roots in Rocks, Echida in Spring, Alpaca on Guard, Riverview Reflections or Coliban Springs.

These delightfully presented photographs were viewed for the cost of a gold coin, followed by delicious, aromatic coffee.

The sun peeped through afternoon clouds as a game of cricket progressed, and we wandered over to the Art Show, to enjoy more than 150 works from many skilled artists.

Executed in a wide variety of media, including graphite, pastels, water colours, acrylics, oils, metal and mosaic, there was a vast range of subjects.

In a dining room, a kitchen, a

restaurant or a café, Huang Wen Jing's beautifully rendered still lifes Apples and Pears would hang superbly. Kathy Hall's monumental Feather Three considered the magnificence of a feather as never before.

Fine works by Peggy Shaw, Kevin Foley, Jane Henderson and Sarah Gabriel's A Moment in Time were among many, that captured attention. It was a splendid exhibition for the Festival which also promised open gardens to visit.

We took a road left, out of 'town' and travelled to Coliban Springs, with the garden and park situated around the homestead.

Pale coated donkeys raised their heads as we entered the gate, attended by a CFA local member.

His friendly welcome informed us there were plants for sale, and Devonshire teas. We ventured up and down, and around the paths, of this wonderful garden.

The extensive Casuarina grove, the lush lavender and marvelous bright pink 'pig face' were a joy, as were quiet areas to sit, eclectic sculptures, rose arbours, vegetable gardens, childrens' play areas, and a large dam, the size of a lake.

A variety of sharp eyed chooks clucked whether we had come to cast grain.

Landscape views could be taken from many points in the garden.

Dave, the dog came around to meet us and walked with us for a while.

Then he returned to sitting majestically in front of his home, while we enjoyed delicious country baked scones with generous helpings of jam and cream served in cup cake patties.

Relaxed after our day in the country, we now, know Redesdale is another beautiful place on this earth.

## Why have a bushfire plan?

In a bushfire or grass fire, people might be confused, disoriented and physically or psychologically stressed. In these conditions, making sound decisions becomes difficult. A written and well practised plan will help you remember what steps to take during a fire crisis.

Make the battle easier for our fire crews this summer. Clear fire hazards early

## Redesdale General Store



- Espresso coffee
- Fuel and Oil
- LP Gas
- Newspapers
- Post Office
- Groceries
- Commonwealth Bank agent

Open 7 Days

Main Road Redesdale

54253154

AUSTRALIA  
POST

Elphinstone

Post Office & General Store



Newspapers/Magazines, Origin Gas Bottles, Bread, Milk & Groceries, Postage Services

Gill & Dave 5473 3200

9 Doveton Street Elphinstone