

REDESDALE
COMMUNITY PLAN
REVIEW
2013





Redesdale

website:

www.redesdale.net

email:

info@redesdale.net



Contents

Introduction	Background to the Community Plan	Page 4
	About Redesdale – a brief history	Page 5
	A snapshot of Redesdale demographics	Page 7
	Sharing Community Information	Page 9
	The Plan	Page 10
	Focus Areas	Page 11
	Where to from here?	Page 11
Action areas	Infrastructure	Page 12
	Economic issues	Page 13
	Community Wellbeing	Page 14
Appendices	Appendix 1 - Results of “importance” voting	Page 15
	Appendix 2 - Action groups and responsibilities	Page 16
	Appendix 3 – Quotes from the April consultation meeting	Page 17
	Appendix 4 - Contacts	Page 18
	Appendix 5 - Agnes Mudford Reserve, Master Plan	Page 19
Acknowledgements		Page 20



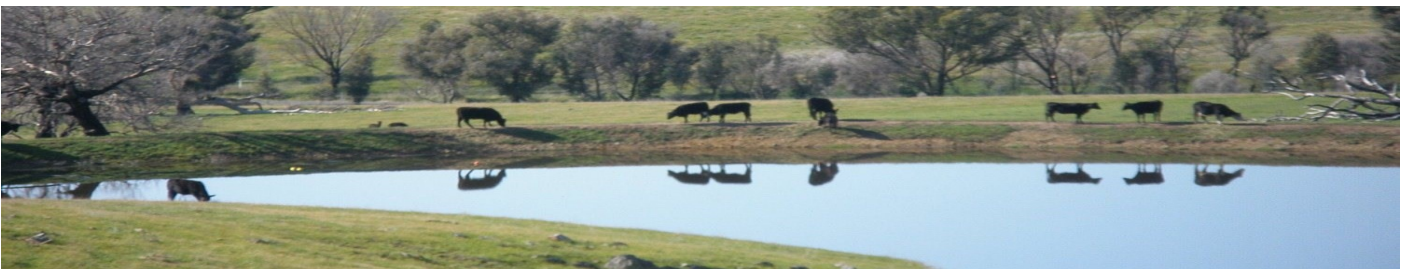


Background of the Community Plan

The first Community Plan document was produced in 2008 following the implementation of the “Greater Bendigo +25 Community Plan by the City of Greater Bendigo in 2005. This called for smaller townships to develop their own unique plan through community consultation and participation.

The process of development and implementation of community plans is funded by local and state government, the latter through the Department of Planning and Community Development.

Inherent in the local community planning process is regular review. Recently a community association was formed, the Redesdale and District Association Inc. in order to drive the development and implementation of the latest plan. The consultation process began in February 2013 when a meeting was held to gather ideas from as many local participants as possible. Approximately 60 residents attended the meeting which was followed by a dinner. The ideas were collated, condensed and distributed to all residents for further input. Another meeting was held in April, attended by 40 residents who reviewed the condensed ideas from the first meeting and prioritised the items. (See Appendix 1 page 14)



About Redesdale – a brief history

History

Major Thomas Livingstone Mitchell passed through the district in 1836 on his journey of exploration through Australia Felix. His party crossed the river he had earlier named the Campaspe near the present site of Redesdale. Within a year, overlanders and squatters were moving into the area and before 1852, when the McIvor gold rush began, the entire district had been taken up and held by squatters under annual licences. The Redesdale Hotel was established after the rush began and was rebuilt in 1856 using local bluestone.



The Redesdale Bridge

The Redesdale Bridge is situated just a short distance downstream from where Major Mitchell made his crossing in 1836. It is a handsome lattice girder, single span, two lane roadway with stone abutments. The bridge was opened on Jan 23rd 1868 by Mrs. Morris, the wife of a local councillor. Many notable residents attended the event which was celebrated with a ball and banquet held on the bridge.

The bridge was supplied by Langlands & Co., an engineering company at the lower end of King St, Melbourne. Mr Muntz, Shire Engineer and Cr Morris representing McIvor and Metcalfe Shires, negotiated with Langland's for the purchase of the bridge. Mr Doran of Castlemaine was the contractor to erect the bridge.

There are conflicting stories about the original location and purpose of the bridge. Even at the time the bridge was opened, two different reports were published in rival newspapers, The Kyneton Observer and the Kyneton Guardian. Other reports followed in various local publications. Some claimed that the bridge had been intended to span the Saltwater River, Tasmania, other the Yarra at Princes Bridge, and yet another that it was meant for the Yarra at Hawthorn. Other stories claim that it was to be part of the bridge at Yass, NSW, and others that it was to span the Murray at Yarrawonga. There was also a report that the bridge had been transported from overseas in 3 sections, one of these being lost at sea when the SS London was wrecked in the Bay of Biscay.

After years of research by historians, it is generally agreed that the bridge was built in the United Kingdom and intended to span the Yarra at Hawthorn. (Extract from the Seymour Telegraph, July 6th 1976).





Present Day

In recent times, Redesdale has emerged as a trading centre for a large rural area. The Redesdale Store doubles as a Post Office, Bank and supplies fuel and gas to the well-established farming population which now includes wineries, olive growers, walnut orchardists, and cattle breeders. Sheep farming and the production of very fine merino wool is still the region's main farming activity.

Many tourists pass through Redesdale on their way to Lake Eppalock which is now almost at capacity since the heavy rains of 2011 and 2012. These days tourists and holiday makers swell the community numbers, particularly in summer months.

Redesdale has an active community and holds many events. The Hall Committee has been organising and hosting activities for many years and has been the heart of the community, particularly in February 2009 when the Black Saturday fires devastated parts of the area.

The Redesdale Revellers hold a number of shows during the winter months and contribute significantly to the funding of the community. Every year there is a Bush Market, Tea Dance, Wood Chop, "Last Person Standing" raffle and Biggest Morning Tea for the Cancer Council. More recently there has been a "Two Rivers" cricket match, a performance of "The Gondoliers", Mountain Bike riding event and Car Club gatherings. The newly developed Redesdale and District Association is actively promoting and encouraging events.

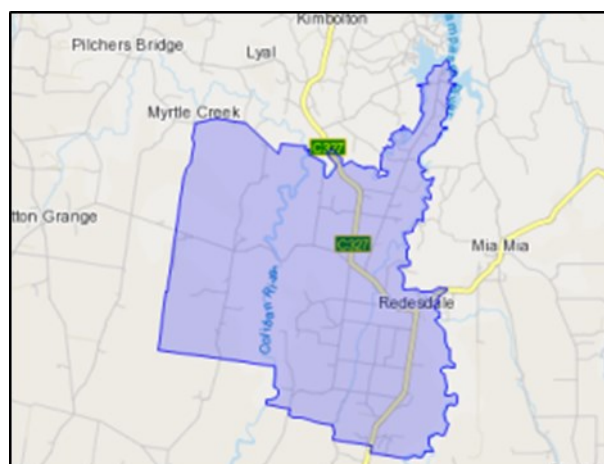


A snapshot of Redesdale demographics

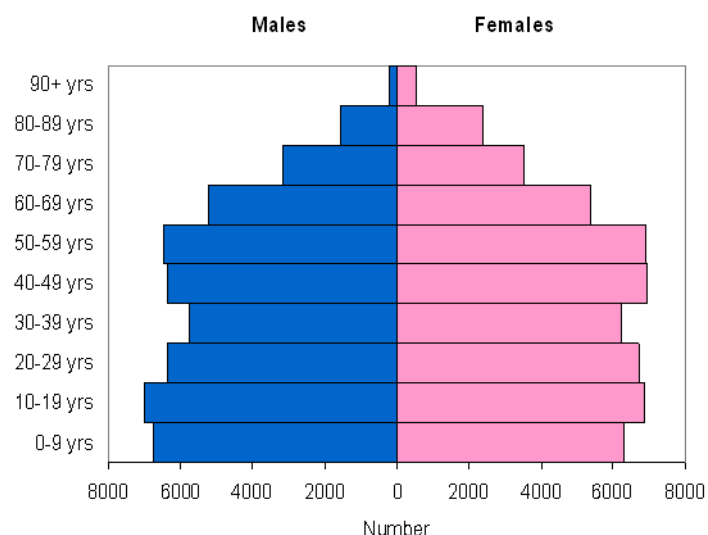
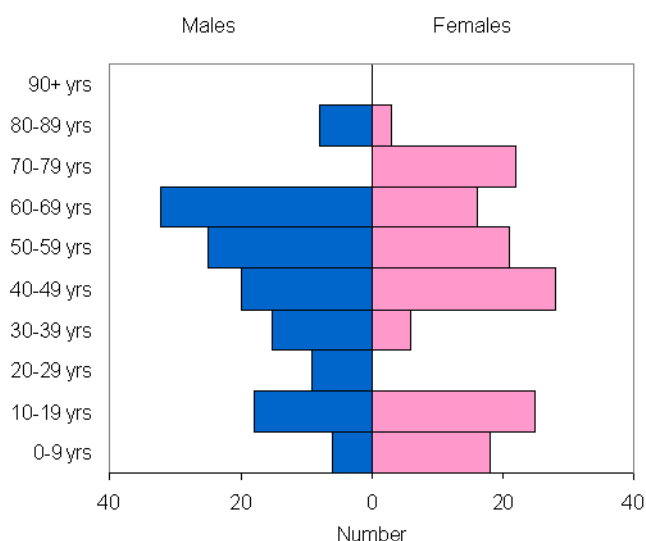
Source: Australian Bureau of Statistics Code SSC1135 (SSC) Web page link:

http://www.censusdata.abs.gov.au/census_services/getproduct/census/2011/quickstat/SSC21135?opendocument&navpos=220

At the time of the 2011 Census, there were 273 people in Redesdale. Of these, 49.1% were male and 50.9% were female. Aboriginal and Torres Strait Islander people made up 1.1% of the population.



Age



The most common ancestries in Redesdale are Australian 26.3%, English 25.8%, Irish 12.5%, Scottish 10.9% and German 5.1%.

Median Weekly Income

People aged 15 years and over

	Redesdale	Greater Bendigo	Victoria
Personal	\$443	\$513	\$561
Family	\$1,180	\$1,245	\$1,460
Household	\$1,011	\$991	\$1,216

The personal and family median weekly income for residents in Redesdale is lower compared to Greater Bendigo and Victoria. The household median weekly income was higher compared to Greater Bendigo but lower compared to Victoria. In Redesdale, 28.4% of households had a gross weekly household income of less than \$600 compared to 28.1% for Greater Bendigo and 3.2% had a gross weekly income of more than \$3,000 compared to 5.1% in Greater Bendigo.

The median weekly rent in Redesdale is the same as Greater Bendigo with \$200. 97.2% of households renting in Redesdale paid less than 30% of the household income on rent compared to 91.5% in Greater Bendigo. The percentage of households paying more than 30% of income on rent in Redesdale is 2.8% compared to 8.5% in Greater Bendigo.

The median monthly mortgage repayment in Redesdale is \$1,454 which is higher compared to Greater Bendigo. Households with mortgage repayments less than 30% of household income in Redesdale are 93.8% which is higher compared to Greater Bendigo with 92.5%. Households with mortgage repayments greater than 30% of household income is 6.2% lower compared to Greater Bendigo with 7.5%.

Family Composition

	Redesdale (%)	Greater Bendigo (%)	Victoria (%)
Couple family without children	54.9	39.2	36.7
Couple family with children	34.1	41.0	46.0
One parent family	11.0	18.3	15.5
Other family	0.0	1.5	1.8

In Redesdale there are more couple family without children compared to couple family with children and one parent families. Compared to Greater Bendigo and Victoria, Redesdale had more couple family without children.

In Redesdale, 74.5% were family households (family households refer to a household with at least one child under the age of 15 years), compared to 68.8% in Greater Bendigo. The proportion of single or lone person households in Redesdale is lower compared to Greater Bendigo with 21.8% and 24.5% respectively.

Dwellings

	Redesdale (%)	Greater Bendigo (%)	Victoria (%)
Occupied Dwellings	66.1	90.7	88.7
Unoccupied Dwellings	33.9	9.3	11.3

Sharing Community Information

In July 2008, The Bridge Connection, a local newsletter was launched. It was, and still is, edited by Berni Campbell, who stated in her first edition, “My reason for getting this newsletter off the ground is threefold: to let everyone in our Mia Mia and Redesdale community and beyond hear of the wonderful happenings of our region, to increase communication amongst groups and individuals in our area, and lastly to provide some interesting and entertaining reading matter”.

There is no doubt that the Bridge Connection fulfilled all these expectations and it is very highly valued by the community. However, its monthly production for four years took its toll and unless a new editor can be found to start more frequent editions, the newspaper will be produced quarterly. The community is very grateful to Berni, and her husband Brett, for all their input and for continuing the publication.

The Redesdale and District Association, with the aid of a City of Greater Bendigo Small Township grant, is developing a website which will promote the area, its services and tradespeople, accommodation options, meetings and events. It is hoped that local groups and associations will post reports and updates. There will be links to local businesses and photographs of local landmarks .

The Redesdale and District Association puts out an update on its activities after each monthly meeting. This is posted on the noticeboard at the Reserve, in the hotel and in the general store window. Those residents who have said that they wish to receive the update are sent it by email and those without emails receive the update by post.


It is essential that the community develops dependable and reliable sources of communication in order that residents are included and their opinions heeded. These sentiments were reflected continually in the ideas that the community put forward in the planning process. As George Bernard Shaw said, *“The single biggest problem with communication is the illusion that it has taken place.”*




The Plan

Purpose

Whilst the Redesdale residents and the committee of the Redesdale and District Association Inc. (RaDA) were working on this plan it became clear that a “statement of purpose” was required to denote the underlying goals of the community. Such a statement could guide planning strategies for future township development:



“Redesdale residents aim to achieve a town which is safe, invitingly landscaped, welcoming to tourists, clean and tidy, and where people of all ages work and socialise well together. They require good, functional facilities for activities and meetings and easy access to necessary services.”



The aim of this document is to allow the whole community to share in their vision for the Redesdale District. The document belongs to the community and is designed to give everyone the opportunity to participate in achieving the goals and actions set out in the plan. The goals and actions in each of the identified focus areas reflect the words and ideas presented by members of the community.

Copies of the plan are available from the RaDA Inc. and from the City of Greater Bendigo.



Focus Areas

Collation of ideas from the consultation process has identified 3 focus areas. Infrastructure, Community Wellbeing and Economic Factors. It is noted that the previous plan had a focus area called “Environment”. As no specific environmental issues were raised in the latest consultation process, this category has been excluded, however it should be noted that environmental welfare is implicit in all focus areas.



Each focus area contains:

Goal - designed to describe the aims.

Actions - steps to achieving the goal.

Partners - show groups and organisations that could become involved in achieving the goal.

Whilst the goals and action are contained within a particular focus area, it is important to be aware that each focus area is interwoven with all others. The numbering of the goals and actions does not necessarily denote priority.

Where to from here?

The 2013 Redesdale Community Plan will form a component of the City of Greater Bendigo strategic plan. For example, particular goals and actions to do with regional transport will be integrated into the relevant Bendigo Plan Action Group.

The Redesdale Community Plan is designed as a pathway for future growth in the district. Goals will be accomplished through resident participation and communication with various stakeholders. Without resident participation, no goals will be accomplished. It is acknowledged that requests made of the City of Greater Bendigo (CoGB) for community developments will be considered only if they are reflected in the Community Plan.

The coordination of the Community Plan will occur through the RaDA Inc. which was formed for this specific purpose. RaDA will work for the benefit of the community and will work with the CoGB and all other prospective funding and support bodies to prevent overlap and doubling up of efforts. RaDA will act as a repository of records so that all parties can have access to what is taking place and who is involved. It is likely that various projects will be linked and worked on simultaneously.

Action groups will be formed to follow through with specific goals in the plan. As goals outlined in the plan will be achieved over time, and as situations will change, RaDA will review the plan with the community and report to the community on an annual basis in order that it remains on track and relevant.

The community plan is a compilation of ideas and priorities outlined by the Redesdale and District community. There is no doubt that the plan is a document for the community to use in any funding application.

1. INFRASTRUCTURE

GOAL	ACTIONS	PARTNERS
<p><i>A town with modern, safe and attractive amenities to support the rural way of life.</i></p>	<p><u>Recreation Reserve</u></p> <ol style="list-style-type: none"> Review the architectural drawings originally made for the Reserve when the oval was developed. (See Appendix 5) Upgrade the Agnes Mudford Recreation Reserve including landscaping, irrigation, fencing, sporting surfaces, seating, and the provision of netted goal posts, basketball hoops, skating ramps and flying fox. Improve sporting facilities with consideration to replacing or upgrading the pavilion and erecting a rebound wall and cricket practice nets etc. 	<p>Redesdale Reserve Action Group DEPI CoGB Redesdale Recreation Reserve Committee RaDA</p>
	<p><u>Hall and Community Assets</u></p> <ol style="list-style-type: none"> Improve facilities at the Hall including the kitchen, storage and smaller areas in order to increase usability for meetings and offices. Improve visual appearance and landscaping of the external Hall area. Advocate for installation of solar panels to decrease electricity costs. Advocate for upgrades to the hall and/or tennis facilities including developments that will provide rooms for community offices, visiting specialists (farming, health etc), tourism information (including a history board) and meetings, possibly as a separate “neighbourhood house”. 	<p>Redesdale Hall Action Group DEPI CoGB Redesdale Hall Committee Redesdale Reserve Committee RaDA</p>
	<p><u>Township</u></p> <p>Improve the safety of pedestrians, cyclists and drivers in and around the Redesdale township by:</p> <ol style="list-style-type: none"> Advocating for upgrades to the area in front of the school. Enforcement of traffic flow and speed limitations at the school area and in other areas of the town. Advocating for the development of a safe footpath between the school and the General Store and improve safe amenities for school children, walkers, push bikes and skateboarders. Upgrading the bridge at Siddles Road to eliminate weight restrictions. Upgrading Redesdale –Sutton Grange Road, and Redesdale Heathcote Road, and slow traffic through the Redesdale township. <p>Improve the public amenity of Redesdale by:</p> <ol style="list-style-type: none"> Improving road signage both on entering Redesdale, within Redesdale, out of Kyneton and at the Calder Freeway turnoff. Signage should also reflect the regional tourism assets, such as “Gateway to the Heathcote Wine Region”. Erecting signage to reduce braking noise at approach to Redesdale Bridge. Improving the streetscape throughout Redesdale by maintaining wayside stop opposite the store, slashing roadsides and removing rocks so that residents are able to mow outside their properties. Landscaping the Racecourse Road/Redesdale- Sutton Grange roundabout a gateway to Redesdale. Improving parking at Redesdale Bridge and access to the water-hole and associated site-seeing. Enforcing business zoning restrictions and land management standards to protect the visual amenity of Redesdale. Improving tree-limb trimming (for visual safety at intersections), verge maintenance, car park marking and signage in central Redesdale. Advocate for a biannual hard rubbish collection. 	<p>Redesdale Safety Action Group</p> <p>Redesdale Township Action Group</p> <p>Vic Roads</p> <p>CoGB, CFA</p> <p>RaDA</p> <p>Redesdale Township Action Group</p> <p>Vic Roads</p> <p>CoGB</p> <p>RaDA</p>

2. ECONOMIC ISSUES

GOAL	ACTIONS	PARTNERS
<i>A thriving local farming and tourism industry which is well advertised and sign-posted, celebrating local produce and talent.</i>	<p>Farming</p> <ol style="list-style-type: none"> Promote the enforcement of noxious weed control through education and follow-up strategies. 	<p>Redesdale Farming Action Group</p> <p>DEPI</p> <p>Landcare groups</p>
	<p>Tourism</p> <ol style="list-style-type: none"> Support existing and develop new community events such as art, food, wine, open gardens, fishing, scarecrow competition and kite flying competitions. Develop a museum and art gallery including a history wall display. Provide clear signage to Turpin Falls. Develop 5th Saturday bartering or farmers market. 	<p>Redesdale Arts and Events Action Group</p> <p>Regional Arts Victoria</p> <p>CoGB</p>



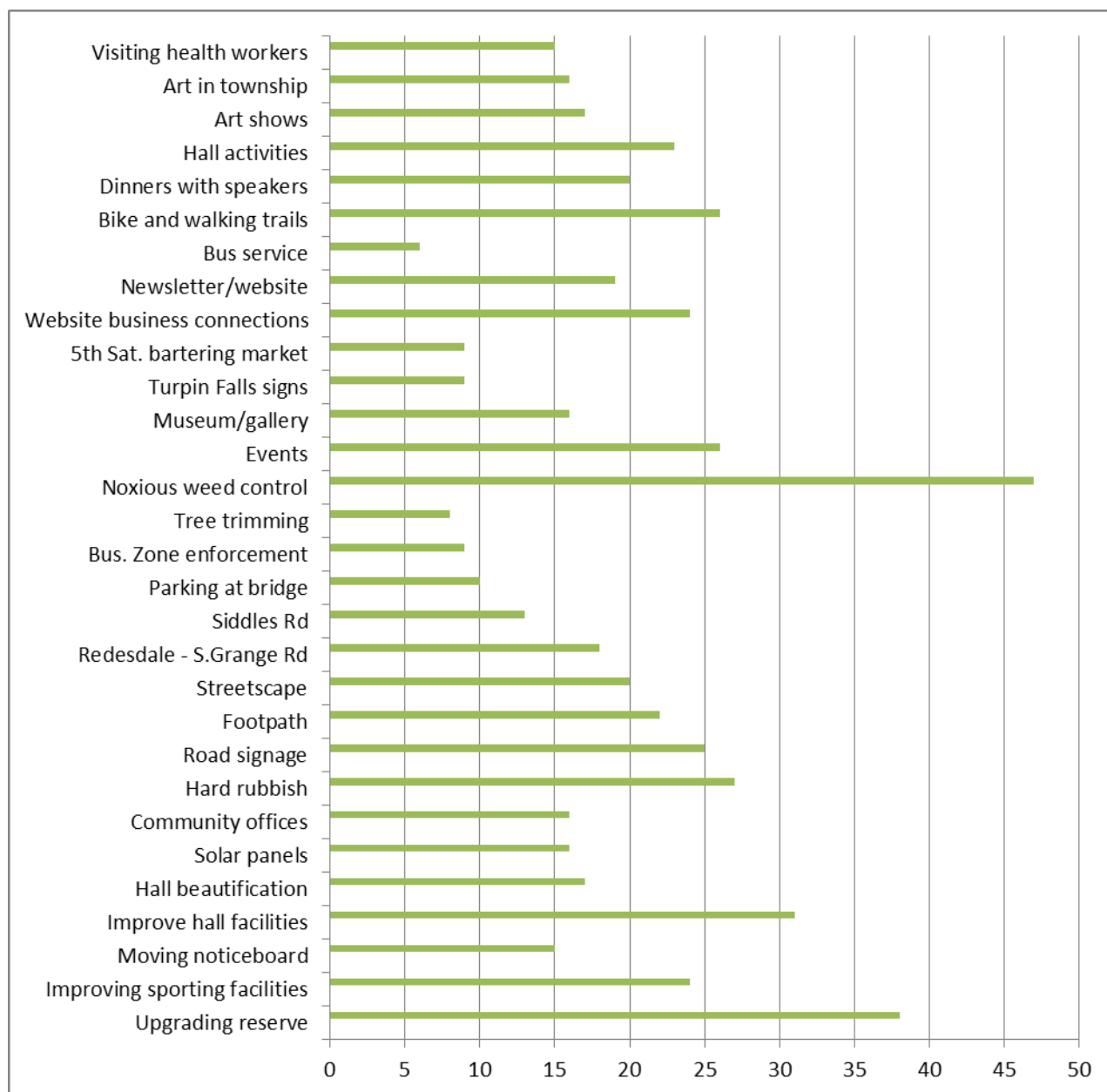
3. COMMUNITY WELLBEING

GOAL	ACTIONS	PARTNERS
<p><i>A community where young and old are cared for and that residents are involved and visitors welcome. Provide an environment where residents have access to health services and where young children are well occupied.</i></p>	<p><u>Communication and access</u></p> <ol style="list-style-type: none"> Review the Community Plan on an annual basis. Continue community newsletter, and develop a website which contains a news page and a “welcome to new residents” document among other things. Provide a community bus service to Kyneton and other local towns for access to health and library services. Welcome to new residents letter for distribution via mail for those without internet access. 	<p>RaDA</p> <p>The Bridge Connection newspaper</p> <p>Redesdale Transport Action Group</p>
	<p><u>Recreational activities</u></p> <ol style="list-style-type: none"> Develop bike and walking trails. Organise regular community dinners at the Hall, invite new residents and educational speakers (such as health and farming updates). Continue Hall activities (e.g. Redesdale Revellers shows and dancing) but develop new interests such as internet usage lessons. Work towards the development of sporting teams (e.g. netball, tennis, cricket and football). 	<p>Redesdale Arts and Events Action Group</p> <p>Regional Arts Victoria</p> <p>RaDA</p>
	<p><u>Art</u></p> <ol style="list-style-type: none"> Promote local art shows and artistic activities for all ages. Promote visual artistic works in the township. 	<p>Redesdale Arts and Events Action Group</p> <p>Regional Arts Victoria</p> <p>RaDA</p>
	<p><u>Health</u></p> <ol style="list-style-type: none"> Consider encouraging a general medical practitioner and allied health practitioners to visit the area for consultations. (This underlines the need for improved facilities in the town). 	<p>Redesdale Hall Action Group</p> <p>RaDA</p> <p>Dept of Health, Victoria</p>



Appendix 1

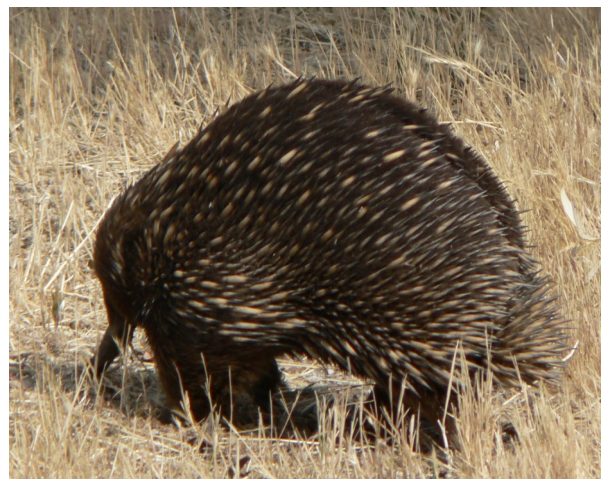
On April 28th, at the second community plan meeting, participants sat at 7 tables in the Redesdale Hall. There were about 40 participants. Each were given sticky dots. As each of the main topics (Infrastructure, Economic issues, Community Well-being) was discussed people were asked to place their sticky dots against the issues they felt were most important. The following table illustrates the results.



Appendix 2

Action Groups to be formed and key areas of interest within the Redesdale Community Plan

Redesdale Reserve Action Group	<p>Liase with Recreation Reserve Committee</p> <p>Work towards the goal of upgrading the reserve (as per points 1,2 &3 of “Infrastructure” –Recreation Reserve in the plan).</p> <p>Apply for appropriate funding</p> <p>Collaborate with RaDA regarding opportunities and progress and to engage wide community action.</p>
Redesdale Hall Action Group	<p>Liase with Redesdale Hall Committee</p> <p>Work towards the goal of upgrading the Hall (as per points 1,2,3 & 4 of “Infrastructure” –Hall and Community Assets in the plan).</p> <p>Apply for appropriate funding</p> <p>Collaborate with RaDA regarding opportunities and progress and to engage wide community action.</p>
Redesdale Safety Action Group	<p>Work towards the goal of improving town safety as per “Infrastructure” –Township points 1,2,3,and 4 in the plan).</p> <p>Apply for appropriate funding.</p> <p>Collaborate with RaDA regarding opportunities and progress and to engage wide community action.</p>
Redesdale Township Action Group	<p>Work towards the goal of upgrading the Township (as per points 1 to 9 of “Infrastructure” –Township in the plan).</p> <p>Apply for appropriate funding.</p> <p>Collaborate with RaDA regarding opportunities and progress and to engage wide community action.</p>
Redesdale Farming Action Group	<p>Work towards the goal of assisting farmers with noxious weed control (as per point 1 “Economic Issues” –Farming in the plan).</p> <p>Apply for appropriate funding</p> <p>Liase with landcare groups.</p> <p>Collaborate with RaDA regarding opportunities and progress and to engage wide community action.</p>
Transport Action Group	<p>Investigate demand for bus service to local towns. Work towards implementation if there is a need (as per point 2 in “Community Well-Being” – Communication and access in the plan).</p> <p>Liase with CoGB. Collaborate with RaDA regarding opportunities and progress and to engage wide community action.</p>
Redesdale Arts and Events Action Group	<p>Work towards the goal of developing recreational and artistic activities, investigating the possibility of a museum and art gallery (as per points 1 to 3 of “Community Well-Being” –Recreational activities in the plan, and points 1&2 of “Community Well-Being” – Art in the plan).</p> <p>Apply for appropriate funding. Collaborate with RaDA regarding opportunities and progress and to engage wide community action.</p>



Appendix 3

Quotes from the April consultation meeting

“We would like:

A regular pharmaceutical delivery service

A “loop the lake” bicycle competition

To extend electrical power to the north and west of the oval

Natural stone wall and artworks in keeping with reserve renovations

An office for the Redesdale and District Association

To restore the camp oven cook-off

To explore local geology, fossils, palaeontology etc

A farmers market

Advertised tradespeople on the website to be qualified

A new floor for the hall

Improve the safety of all the roads as large truck go through to Bendigo

Start thinking about a whole new Hall area in 10 years time



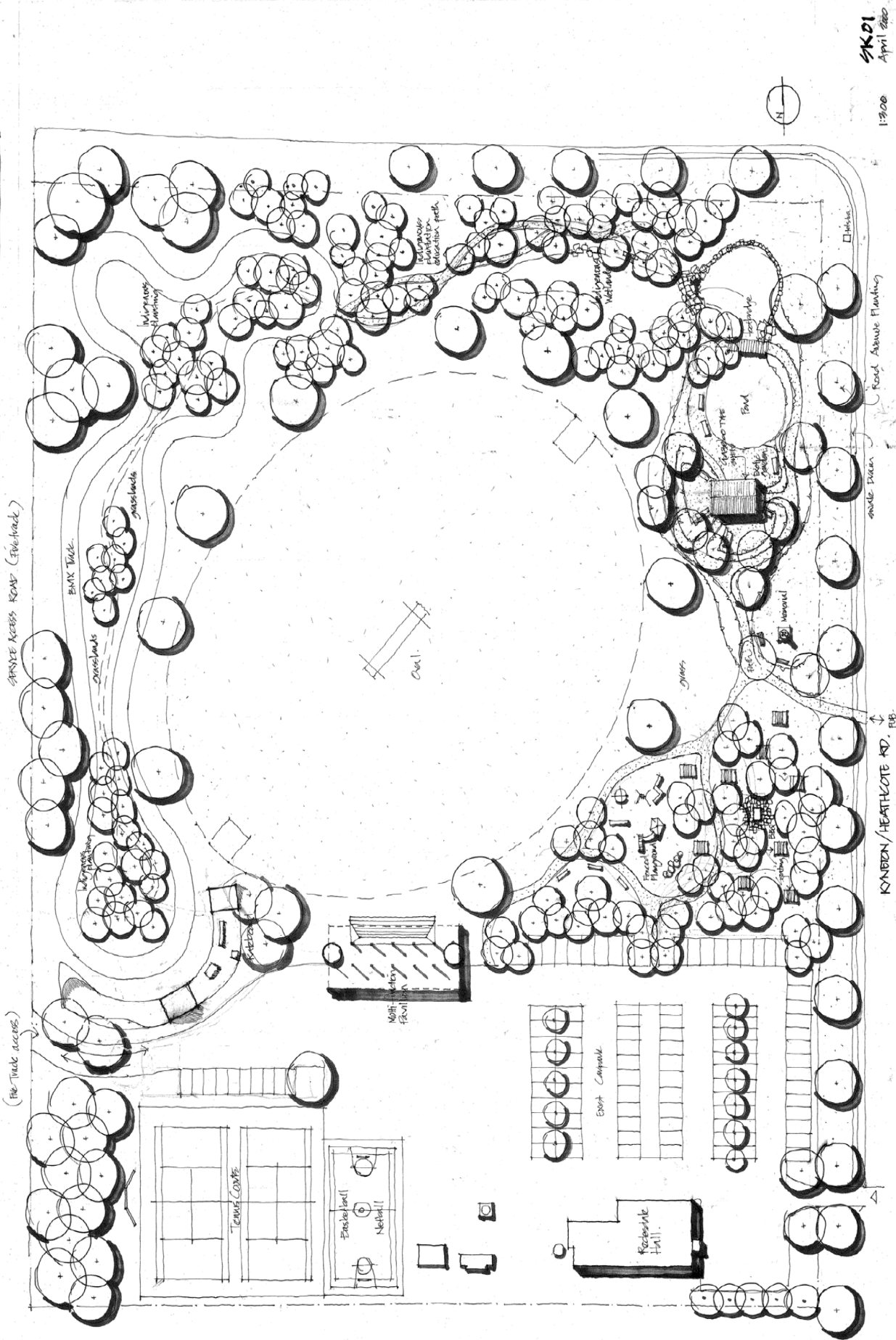
Appendix 4

Contacts

<u>Name</u>		<u>Contact Person</u>	<u>Position</u>	<u>Contact details</u>
City of Greater Bendigo	CoGB	Lyn Talbot	Corporate and Community Planner - Strategy	Ph: 5434 6148 Email: StrategyUnit@bendigo.vic.gov.au
Department of Environment and Primary Industries	DEPI	Gavin Parkes		Ph: 136 186 Website: www.dse.vic.gov.au
Redesdale Hall Committee		Carolyn-Anne Boyd	Secretary	Ph: 5425 3194 Email: bredesdale@harboursat.com.au
Redesdale Recreation Reserve Committee		Simon Hills	Secretary	Ph: 0418 522 817 Email: s.hills@maestrotravel.com.au
The Bridge Connection		Jim Mynard	Editor	Ph: 0417 567 741 Email: mynardmedia6@bigpond.com
Redesdale and District Association	RaDA	Kathy Hall	Secretary	Ph: 0407116899 or 5425 3272 Email: info@redesdale.net
Redesdale Mia Mia Primary School			Secretary	Ph: 5425 3155
CFA		Lee Mason	Secretary	Ph: 0422 055 278

Appendix 5

Agnes Mudford Reserve Master Plan



SK01
April 2000
1:200

ARCI DESIGN
WORX
120 North Redesdale Road, Redesdale VIC 3444
Ph: 5425 3188 Fax: 5425 3189

AGNES MUDFORD RESERVE MASTERPLAN



Acknowledgements

The development of the Redesdale Community Plan has been a huge group effort and the committee of the Redesdale and District Association would like to thank the following:

The people of the Redesdale District for attending the consultation meetings and taking part in sometimes noisy and often challenging table discussions.

The Redesdale and Mia Mia Primary School for providing a warm and inviting meeting venue. We would particularly like to thank headmaster Ben Fiegert for his support and assistance with electronic media.

The Hall Committee for providing the venue for large and small meetings, often at short notice.

The City of Greater Bendigo, particularly Lyn Talbot, Joy Mason and Cr Helen Leach for their constant back-up support and attendance at meetings. Thanks are also due for the Small Township grant to further the community plan process and the development of a website.

We also thank Chevelle Williams, Kate Hicks, Mark Jankelson, CoGB, Kathy Hall, Chris Gillies, Janette Johnson and Suzie Williams for their photographic contribution.

The Committee of the RaDA who have contributed, time, ideas, enthusiasm and energy, not to mention items for the inaugural RaDA bush market stall and generous donations of food (particularly the Jankelson family) to sustain the local residents through this process.





Redesdale

website:

www.redesdale.net

email:

info@redesdale.net