

Bridge Connection

Edition 67 July 2015

**Community Newspaper for the Mia Mia - Redesdale
Region Including Heathcote, Derrinal, Glenhope, Baynton, Sidonia, Barfold, Langley, Sutton
Grange, Elphinstone and Kyneton**



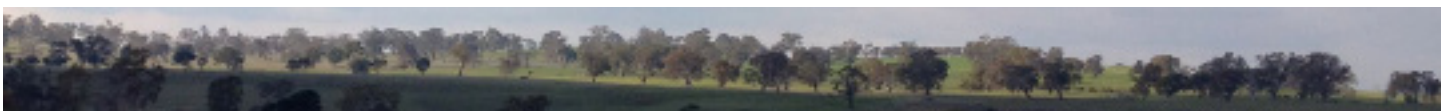
The Rural Café reopened in September 2014, much to the delight of local residents as it had been closed for over 2 years. Shane and Elizabeth, daughter Jess and boyfriend Jamie now run the thriving business with the able help of Katrina Golden who has been part of Redesdale for 20 years and knows everyone!

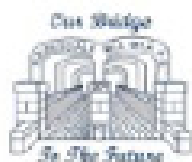
Shane, the youngest of 8 siblings, and his brother Billy have been coming to Redesdale for holidays since they were small boys. The family now live in the house next to the hall and Jess has happy childhood memories of sneaking over the fence to the playground. Since opening the café, the family have made huge efforts to involve themselves in community events, working behind the scenes to promote fundraisers.

They have been extremely generous as people will have noted at the Otis Foundation dinner when they donated two dinners per week to those who will be staying at Kez's Hideaway.

Recently the café has been extended to provide more outside areas and soon a sunroof will be fitted over seating areas. A liquor licence was obtained at the beginning of June. In summer the café will be staying open later and patrons will be able to enjoy a glass of wine while the sun sets. Shane and Liz's son-in-law, Jean Paul Edwards, and their daughter Rebecca have plans to start regular wine tasting events with matched meals in the spring. They are hoping that local wineries will come on board with the idea.

...continued on page 15





Redesdale-Mia Mia Primary School

Truthfulness, Respect and Trust of others.

Principal - Joe Sebire

Phone - 5425 3155; Email - redesdale.mia.mia.ps@edumail.vic.gov.au

Plays

We have been having fun with our narrative writing by turning them into mini plays. We have had some very interesting plays and twists on fairytales!



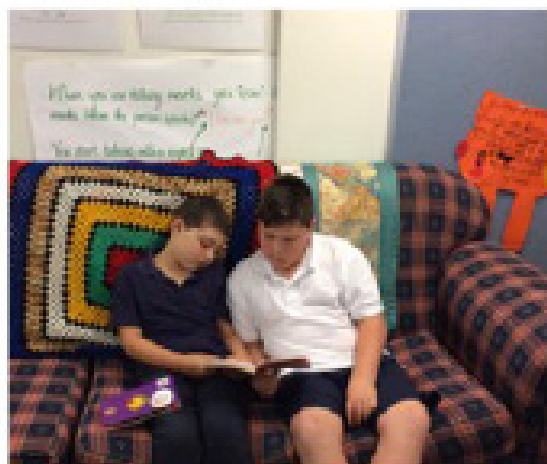
Veggie Garden

Our veggies are coming along slowly in this weather. We have carrots, brussels sprouts, broccoli, silver beet and onions. We spend time looking after our plants fortnightly.



Buddy Reading

Every Friday we have our buddy reading session. We make sure we can both see the book and discuss what we read.



Eggcellent Art

We entered the Kyneton Poultry Shows student art competition with some fantastic entries in the egg decoration section.



Term 3 Theme ~ "Our Ancient World"

We are learning about rock types, volcanoes and dinosaurs this term.

Editorial

We've had the winter solstice, survived an ant-arctic vortex and the children are back at school. We're on the winter home straight!

In this issue, we continue to celebrate the energy of the district and the achievements of people who have grown up here. The article about Pamela Mathews is a great example (see page 9).

If you were one of the 114 people who attended the 'Dinner + Talk' on July 17th at the Redesdale Hall, you will have witnessed the generosity of our local residents and their friends in raising awareness and funds for Kez's Hideaway (the Otis Foundation breast cancer initiative). See page 13 for a full report.

This paper is run by volunteers and its production depends on advertising. In this way, local businesses show their support for the paper and we are highlighting those who do support us in a new "classifieds" section.

We notice that as planning for the "Redesdale Rocks Festival" progresses, how appropriate that the primary school is studying geology this term!

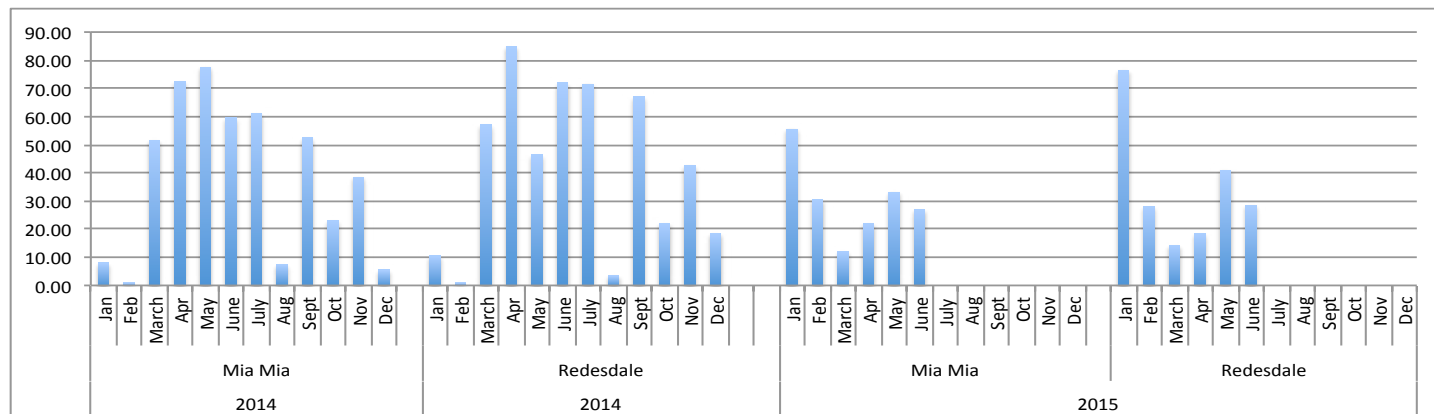
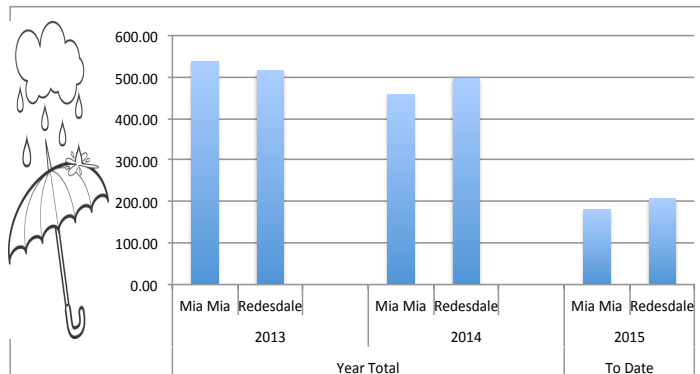
Kath Hall and Regina Bennett, Editors



Scan this code with your phone app to go straight to the Redesdale website:

Find us on facebook at:
<https://www.facebook.com/pages/Bridge-Connection/1415991502042912?ref=ts>

RAINFALL



ADVERTISE IN THE BRIDGE CONNECTION



Simplified advertising rates and sizes - see page 5 for details

Management Committee

President; Mary Bennett 03 5425 5551
 Secretary; Regina Bennett 03 5425 5402
 bridgeconnection.secretary@gmail.com
 Treasurer; Terry McKenzie 03 5425 3262
 bridgeconnection.treasurer@gmail.com
 Advertising; Callum Jones 03 5425 5574
 bridgeconnection.advertising@gmail.com
 Editorial; Kathy Hall & Regina Bennett 03 5425 3272
 bridgeconnection.editor@gmail.com

Hard copy to 866 Coliban Park Road, Redesdale 3444

Distribution

800 printed copies of the Bridge Connection are circulated to the Redesdale Mia Mia region, taking in Barfold, Baynton, Derrinal, Elphinstone, Glenhope, Heathcote, Kyneton, Langley, Metcalfe, Sidonia, and Sutton Grange.

DISCLAIMER

The Bridge Connection Inc. committee wishes to advise that the views or remarks expressed in this publication are not necessarily the views of the volunteer Bridge Connection Inc. editorial or production team and no service or endorsement is implied by the listing of advertisers, sponsors or contributors. Although every effort is taken in reproducing and printing advertisements correctly, we take no responsibility for errors.



If you live outside the district postal area and you would like to receive the Bridge Connection by post:

SUBSCRIBE!!

For \$25 per year you will receive 10 editions by mail.
 Phone ; 0407 116899

SUPPORTING YOUR COMMUNITY

For assistance with
state government matters
please contact my office
2/55 Carrier St., Benalla VIC 3672
email: steph.ryan@nationals.org.au



WWW.STEPHRYAN.COM.AU

Community Engagement Meetings

Mia Mia
Tues 13 October 7.30pm - 9pm
Mia Mia Mechanics Institute Hall

Redesdale
Monday 19 October 7.30 - 9pm
Redesdale Hall

Redesdale Hall

is available for hire.
Please phone Carolyn 5425 3194

For advertising in the
Bridge Connection
please call Callum
5425 5574

Please pick up after
your dog



General Repairs, Maintenance,
Painting, Gardening,
Tiling, Carpentry,

Home & Garden
Maintenance Services

Robert Schomacker ☎ 0407 823 900

Federal Member for Bendigo
LISA CHESTERS MP

PO Box 338 Bendigo 3552
Cnr. Williamson & Myers Sts, Bendigo 3550
T: 03 5443 9055 • F: 03 5443 9736
E: Lisa.Chesters.MP@aph.gov.au
@LMChesters • /LisaChestersBendigo



QUALITY FARM SHEDS

Machinery Sheds	Bams
Hay Sheds	Horse Arenas
Stock Shelters	Workshops
Shearing Sheds	Garages

Building Quality Farm Sheds since 1975

CENTRAL
steelbuild

T/A Central Vics Sheds
1300 995 630
8 Hoyle Court, Kyneton

PLANTS AND GARDEN WARES

Be surprised...

Rear of Piper Street (enter Wedge St) Kyneton
Phone 5422 3033. Open Thursday to Monday

Calling on all wine producers: stud farmers; olive growers; painters; builders; earthmovers; health professionals; architects; plumbers; electricians; sewers; knitters; celebrants; funeral directors; real estate agents; fencers; farriers; egg producers; etc etc etc!!!

Calling on businesses and organisations to please

support our newspaper

The Bridge Connection is calling for all local businesses to consider advertising in this newspaper. All the work done to produce the paper is voluntary and it is hard work. We do it because we think it is extremely important for rural communities to have a voice and to be kept in touch with what is happening in the area.

The Bridge Connection took a new turn 4 months ago to concentrate more on local themes as the larger towns that surround us have their own papers where we can read about Bendigo, Kyneton and Castlemaine.

Those who advertise with us are doing this not only for commercial reasons, but to support local communities. There are community-orientated and generous people behind these businesses. For this we are extremely grateful. If the Bridge Connection is to survive, we will need at least another 10 regular advertisers. We are calling on all our readers to help us find those advertisers through spreading the word and the newspaper. We really need your help.

The newspaper is proudly printed by the Kyneton Copy Centre which is part of the Windarring community.

The Bridge Connection is happy to produce articles about the businesses and organisations who wish to take up advertising in recognition of their support.

We have simplified the advertising sizes and rates:

Business card (90mm x 55mm) \$25 per edition \$250 for 12 months

1/4 page (130mm x 90mm) \$50 per edition \$500 for 12 months

1/2 page (190mm x 130mm) \$95 per edition \$950 for 12 months

Full page (270mm x 190mm) \$175 per edition \$1,750 for 12 months

Add 20% for colour

For any further information, please contact Callum Jones on

Letters to the Editors

To the Editors:

Why have the Nannies chosen to turn their backs on the perils awaiting their rural charges? We have come to expect a nanny to be ever ready to pounce on anything which might be regarded as "dangerous", be it ever so insignificant, so why the disregard of the dangers of driving on country roads, brought about by the current plague of kangaroos. Much as we admire our national symbol their numbers have now reached proportions, reminiscent of mice plagues in the eighties and nineties. The only beneficiaries from this situation are panel beaters, who report an alarming escalation of repairs from such collisions, all of whom report that 80% of their business is now taken up with repairs to vehicles damaged by kangaroos. One operator said they have taken to placing their business cards in kangaroo pouches to advertise their service!

As the road side behavior of kangaroos is quite unpredictable and most drivers do drive quite slowly, knowing they are in a potentially high risk area, there is now no "safe" way to drive on our roads.

Collisions occur regardless of the speed of the car.

Road Safety is very high on the list of Nanny concerns and rightly so, however it is now time for the devastating effect kangaroos are having on road safety to be seriously addressed. How many accidents and damages to cars are regarded as acceptable? Obviously population management is the first step and it is time for a sustained culling operation to be established. A sterilization program could be run simultaneously if the logistics of such could be readily installed.

It is extraordinary to see how no action has been taken over this matter. Could it be that politically it is in the "too sensitive" basket. How long is this to continue?

Jill James

Dear Editors,

I am writing on behalf of the Redesdale Hall Committee Inc. to congratulate all at the Bridge Connection on the new look and layout; well done and thank you for enabling this publication to continue on. We would also like to take this opportunity to thank you for helping us to "spread the word" on our various activities, etc. over the years; your ongoing support is very much appreciated!

Yours Sincerely,

C. Boyd
(Secretary)

Dear all at Bridge Connection,

Although we have not been in Redesdale for 9 years, I do like getting the "Bridge Connection" - I do still miss living there and the friends I made.

Cheque to cover postage etc.

Thank you
Pauline Savage

**proudly
printed
in
Kyneton**

Castlemaine, Kyneton & Gisborne
CopyCentre

WINDARRING
CHOICE & INCLUSION for people with disabilities

**Australian
Disability
Enterprises**
More than just good business.

58 Mollison St
Kyneton
0354 222 400

www.windarring.org.au

Helping our community grow.

**Heathcote & District
Community Bank® Branch**

Phone 5433 3115 or visit bendigobank.com.au

Bendigo Bank
Bigger than a bank.

Bendigo and Adelaide Bank Limited.
ABN 11 068 049 178 AFSL 257579.
54895-11 (238505_v1) (8/12/2014)

Redesdale General Store Winter Specials

1st June

10am – 7pm Lunch and Dinner

For **GREAT** Tasting Coffee, you can't beat the freshly ground aromas the Coffee Basic beans give off!

Coffee	\$3.00
Coffee 'n' Cake	\$5.00
Coffee 'n' Egg 'n' Bacon (Roll/Sandwich)	\$6.50

Pizza or Hamburger 'n' Chips/Wedges
Plus



Stubby/Can of Beer
Or
Glass of Local Wine
\$10



Also available are Jenny's Amazing Freshly made Sandwiches. Not to mention the Delicious Country Baked Sausage Rolls.

So come along to enjoy these specials and more in a friendly environment and experience the newly fully licenced bar area serving local wines/various beers/sprits (at the most competitive prices anywhere!).

Redesdale Hall Activities

Meetings:

The second Tuesday of each month, 1.00 pm - Hall Comm. Meetings.

The second Tuesday of each month, 7 pm - Rec. Reserve Meetings.

First Monday of each month, 10am or 4.15pm, Bridge Connection Committee meeting.

Events:

Saturday, 8th August, 2015 2pm - "My In-Laws are Outlaws" matinee show

Sunday, 20th September, 2015 - Afternoon Tea Dance.

Monday, 19th October - 7.30 pm: Community District Engagement Meeting.

Friday, 30th Oct., Sat 31st Oct., Sun. 1st Nov. - Art Show.

Worth a thought:

"The cocks may crow but it's the hen that lays the eggs."



Margaret Thatcher

Todd PROPERTY

Real estate sales &
property management
with service



Brad Todd



Barb Walker



Walter Morelli

5433 2228

95 High Street, Heathcote

CONNOLLY GLASS

0428 535 101

177 LYELL ROAD REDESDALE VIC 3444

email;chrisjen@bigpond.net.au

BROKEN WINDOW REPAIRS,MIRRORS, BALUS

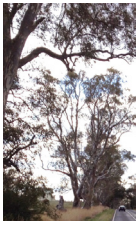
TRADES, SHOWER SCREENS: FRAMED, SEMI

FRAMELESS, AND FRAMELESS, RETRO FITTED

DOUBLE GLAZING

AND

COMMERCIAL WINDOW FRAMES AND GLAZING



Riddle in Middlevale

Episode 2

Arrival

by Finley Carraway



Jim Stevens' small clothes bag sits on the passenger seat next to him, packed efficiently with jeans, t-shirts and an assortment of socks that long ago ceased to match. He's off into the Victorian countryside. The windows are down, perhaps the fresh country air will work wonders for his unemployed soul. Behind his seat sits his pride and joy, a ten-year-old camera bag, frayed and falling apart as if it were a baggage handler's finest work. Excited to be doing something interesting for a change, he makes it onto the Calder Freeway only to find he's nearly out of fuel. The service station at Calder Park saves the day and Jim turns in. With his tank full and his mind filled with adventure, Jim decides to treat himself to a nice espresso coffee. The countryside, the green grass, a magnificent ram to photograph. What a beautiful day! And what a beautiful girl it is behind the counter! Jim gazes at her for a moment before staring into the middle distance, daydreaming of a little cottage by the sea, the sound of waves carried by the sea breeze through the open window across the sun kissed figure of the counter girl reading poetry.

"Excuse me ... EXCUSE ME!" A shrill female voice interrupts his daydream. "Why must people be so intrusive? Perhaps I'll get her number." Jim ponders.

A man behind him in line clears his throat and taps him on the shoulder, pointing ahead. Sliding out of his meandering thoughts and crashing back down to Earth, Jim looks up to see the girl, arms crossed over her black polo shirt, giving him an incredulous stare and tapping her fingers on her willowy upper arm.

"That'll be four dollars fifty. Cash or card?" She asks, humourlessly.

Jim reaches out to her with some coins and pays. Deflated, he walks back to his car, without her number. He sets off back up the Calder, contemplating his assignment, sipping his disappointing coffee.

Remembering Melissa's excellent instructions, Jim follows the signs pointing to wineries and Lake Eppalock. He has settled into a rhythm now, and roars in towards Middlevale. "Friday on My Mind" is on the radio, in some sort of reminiscence hour, and Jim is singing along at the top of his voice. Loudly enough that he hasn't heard the sirens at all. Just as he's breaking into chorus, he spots the police car in his rear view mirror. "Ah, damn!" he grumbles, looking quickly at his speedometer to see how bad it is, but he seems to be alright. He pulls over and, in his side mirror, watches the stocky officer get out of his car and walk towards him with a haughty air. "Can I see your licence please?" the officer asks, his rotund figure edging closer. His badge says "Eldridge" and Jim recognises the rank of sergeant on his sleeve. Jim hands over his licence, shrinking in his seat like a school kid late with homework.

"You know how fast you were going?" "Ah... 97?"

"Clocked at 103. So slow down, alright? Now, Mr..." he pauses to inspect the licence, "...Stevens. Haven't seen you round here before. What are you doing in these parts?"

Jim, now the scolded student, feels compelled to answer, "Well, I'm here on assignment. I have to photograph a prize ram."

"Oh yeah. A ram, hey? Hmmmm... Now, whose ram has the pleasure

of your visitation then?"

Jim finds himself backing away from the officer, despite the car door between them and the constraints of his seatbelt, "Well it's Mr. Prospero's ram. Up on the hill just through Middlevale towards a place called..."

Jim fumbles around in the centre console for the instructions from Melissa and reads the name, and realises he has a choice of pronunciations, "ah... Mee-ah Mee-ah?"

"That'll be My-Ah My-Ah, Mr. Stevens." Sergeant Eldridge looks very stern, and leans in towards Jim, who by this stage is almost in the passenger seat. The sergeant thins his steely eyes and his ruddy cheeks glisten with the sweaty moisture of a busy day, or perhaps a long lunch.

"Old Mr. Prospero. Hmm... Now listen, Jim Stevens, I don't want any trouble in my district, hear? And if you go snooping around Middlevale..." Eldridge is enjoying his authority now and gets even closer, his portly stomach pressing into the door and his finger waving like a truncheon, "...you just keep to yourself and don't start any trouble. We've had your sort here before, and it did not end well." He hands the licence back to Jim and sends him on his way.

Jim barely breaks 45 kilometres an hour for the next three minutes, nervous after this frosty encounter. He drives through the main street of Middlevale, and crosses the Campaspe River via a magnificent arched iron bridge that he simply must photograph sometime. "When the sergeant isn't around..." Jim mutters to himself as he continues up the hill, anxious simply to reach his destination unscathed and with his papers intact.

The winding gravel track up to Mr. Prospero's property is lined by olive trees with red gravel surrounds. This stately introduction gives way to a grand gated entry near the looming house, rising up upon the hill like a medieval castle, except for its sandstone and slate construction and solar panels glinting in the sun. Jim's little car pulls up like a tick next to an elephant in front of the main entrance as two svelte kelpies come bounding up, teeth bared and barking loudly. They're too neat to be working dogs, must be the owner's pets, Jim decides. They calm down as he sees on the landing in front of an enormous double wooden door, a wizened old man with an elaborate black cane standing, waiting, as if he'd been there for centuries.

"Greetings. You must be Mr. Stevens the photographer from Melbourne. My name is Aldobrandino, but you may call me Mr. Prospero. I await the rain!"

Jim shakes his hand, "Jim Stevens, good to meet you too, Mr. Prospero." He is a little confused with the first name to surname routine and cannot for the life of him see the connection to the weather, but decides to let it pass.

"Vitaly! Vitaly! His bags! Help Mr. Jim with the bags!"

A blond, rather plain looking woman appears through the giant doors, the optical effect of which makes her look tiny and elvish, and walks up to Jim, whereupon he discovers she's about his height and actually quite pleasing to the eye.

"Never mind the old loon," she says quietly, offering to help with his bags, which Jim politely declines. He's already got his two small bags ready. "The name's Victoria, actually, call me Vicky. Let's get you inside." Jim's mind races through the day's developments as he and Vicky scuttle in through the gaping maw of the double doors. Mr. Prospero remains fixed to the landing, awaiting the rain.

To be continued...

© Finley Carraway

finley.g.carraway@gmail.com

All characters and events in this publication, other than those clearly in the public domain, are fictitious and any resemblance to real persons, living or dead, are purely coincidental.

All rights reserved. No part of this publication may be reproduced, stored in a retrieval system, or transmitted in any form or by any means, without the prior permission in writing from the author, nor be otherwise circulated in any form.



CLASSIFIEDS

FOR SALE

Place your advertisement here. 10c per word.
Minimum \$3 per advertisement

POSITIONS VACANT

Cleaner for the Redesdale public toilets required.
Interested people should contact the Reserve Committee on mobile no: 0427 280 814 for a copy of the job description and remuneration details.

Redesdale and District Association

AGM

All welcome
Thursday August 20th
Redesdale Hall
6.30 pm

WE SUPPORT THE BRIDGE CONNECTION

See advertisements for these businesses in this edition :

Elphinstone Post Office and General St	5473 3200
Redesdale General Store	5425 3154
LnR Home and Garden Maintenance	0407 823 900
Rural Cafe	5425 3271
Ross Knight Earthmoving	5425 5506
KMA Tax and Accounting	5422 3178
RSD Chartered Accountants	5445 4200
The Albion Hotel, Kyneton	5422 2066
Connolly Glass	0428 535 101
Todd Property - Real Estate	5433 2228
Redesdale General Store	5425 3154
Heathcote and District Community Bank	5433 3115
The garden Tap Nursery	5422 3033
Central Victorian Sheds	1300 995 630
Lisa Chesters MP	5443 9055
Steph Ryan MP	5762 2100



NORTH CENTRAL

Catchment Management Authority

Connecting Rivers, Landscapes, People

Landcare grants open



NORTH CENTRAL

Catchment Management Authority

Connecting Rivers, Landscapes, People

North Central Catchment Management Authority (CMA) has opened its 2015-16 Community Grants program.

New and existing Landcare and community groups, and individuals, can apply for grants up to \$15,000 for environmental or sustainable agriculture projects.

Maintenance (up to \$500/group or network) and start-up grants (up to \$500/group or \$1,000/network) are available, project grants of up to \$10,000 are available for individuals, groups or networks, and Landcare networks are eligible for grants of up to \$15,000.

North Central CMA Regional Landcare Coordinator Tess Grieves said preference would be given to projects that align with regional, state or national priorities, as set out in the North Central Regional Catchment Strategy (RCS).

"We are looking at the protection or enhancement of assets as set out in our RCS, with projects such as protective fencing, revegetation or riparian restoration," she said.

"We will also prioritise projects that improve the natural resource base of agricultural landscapes such as erosion control or salinity plantings, and activities that increase community awareness and engagement like planting and field days.

"Projects that protect or enhance nationally significant species or communities, such as surveys or nest boxes will also be prioritised, as will group or network start-up or maintenance funding."

Ms Grieves said the community played an important role in the health of the catchment.

"Local Landcare and community groups are vital in protecting, enhancing and restoring our environment and sustaining our agriculture," she said.

"We value that work and want to ensure they have the support they need to empower others to make an ongoing difference."

The grants program is supported with funding from the Australian Government's National Landcare Programme (NLP) and the state government's Victorian Landcare Grants (VLG).

Applications close 5.00 pm Friday 14 August 2015. They should be submitted via email to landcare@nccma.vic.gov.au or post to North Central CMA, PO Box 18, Huntly VIC 3551.

Application forms and guidelines are available under the Landcare Grants tab at www.nccma.vic.gov.au For assistance in completing applications forms email landcare@nccma.vic.gov.au or phone 03 5448 7124.

Young Langley Lady is a Winner!



Bridge Connection would like to congratulate Pamela Matthews for winning the Aquatics and Recreation Victoria Industry award on Friday 12th June as "Teacher of Swimming and Safety". Pamela works at the Kyneton Sports and Aquatic Centre and the award acknowledges an outstanding contribution by an individual with strong leadership qualities and commitment to excellence in the field.

Pam was selected by a panel of professional industry leaders & to win the prestigious award shows great professionalism, passion and commitment to educating students on swimming & water safety.

"Pam was up against strong competition from across the State including much larger centres in and around Melbourne." Proud mother Lyn Diss says.

She was the overall winner and proud recipient of the 2015 Award for the whole State of Victoria. Pam has been working in the industry for over 10 years and to have someone from a small rural center recognised for her dedication and hard work is a wonderful achievement. Having three teenage children of her own, who love going to the beach in summer, Pam knows only too well the importance of water safety.

The dedication, drive, enthusiasm and fun Pam creates in the pool helps to teach children how to swim and most importantly about water safety. This is her passion.

We claim Pamela for the district as she was brought up on the fine wool Merino Stud "Wattlebank" in Langley. The eldest of three siblings, she loved growing up on the farm. Pam enjoyed any task whether it was mustering, drenching, lambmarking, driving machinery. She was very much an outdoors kid.

or driving machinery. According to her Mum, she was very much an outdoors kid.

The picture below is of the old house which was pulled down in Taradale 100 years ago and



reassembled at "Wattlebank" Langley on the banks of Sandy Creek where it has provided a home for 100 years of the Diss family.

When she was 4 and a half, the Langley Primary School asked Lyn if Pamela would like to start school to help keep it open. In her last year at Kyneton Secondary Pamela went to Kyneton Fine China for work experience which she loved.

Lyn says,



"The English couple wanted her to stay on and do an apprenticeship. She learned the whole trade and could run the factory, modelling, firing and painting of the porcelain figurines, to sending them all around the world."

*Above: Pam at Kyneton Fine China.
Right: Pamela's children Lachlan, Ashley and Hayley who has just made her Deb.*

All Pamela's children went to Langley primary School. Now there is a third generation of the Diss family (cousins) at the school which celebrated its centenary in the same year

as the Diss family. When Pam's father Arnold went to school there, he was one of 7 students in the school. It has changed in size since then.



Continued on page 10



The Albion
KYNETON



OPEN 7 DAYS

12 noon 'til late
Dinner 7 days 6-9pm
Lunch 7 days 12-2pm

The Albion offers a fine selection of local wines and famous beers on tap. Local produce from the macedon region is carefully prepared for classic Italian dishes. Children are catered for with a special menu just for their discerning palates.

Ideal for functions or parties.
The Albion Offers dining in the main restaurant or outdoors in the courtyard.

Come and enjoy the experience that is The Albion Kyneton.....

41 Mollison St. Kyneton www.thealbionkyneton.com.au T 54222066

ROASTER for HIRE

Commercial sized roaster

available for hire from the Redesdale and District Association.

\$75 for members and \$100 for non-members

(Free hire to Hall, Rec. Reserve Committee, and CFA)

Phone 0427 280814

DEFIBRILLATOR

AT THE REDESDALE STORE

24/7

CALL 5425 3154 IF THE STORE IS CLOSED

Superannuation – make it a big investment

With the start of a new financial year, it is time to plan ahead for the financial year upon us. A major area for review should be your super. Ensure to maximise your super while minimising your tax. It could be costly upon retirement if you just let it roll. So I have provided a little more information and some ideas to consider. For the financial year ending 30 June 2015, individuals who are aged 49 years or over on 30 June 2016 can make \$35,000 concessional contributions. Whereas, members who are aged under 49 on 30 June 2016 can make \$30,000 concessional contributions. These are contributions that can be taxed concessional at 15%. Keep in mind that included in the concessional contributions caps outlined above are Superannuation Guarantee Contributions (SGC) from your employer or a tax deduction has been claimed for the contribution (business owners).

If an individual is wishing to commence a salary sacrifice arrangement this is something that is recommended to be done at the beginning of the financial year. For individuals who have a concessional contribution cap of \$30,000, this works out to be approximately \$576 per week. For members who have a cap of \$35,000, this works out to be approximately \$673 per week. This includes any contribution made by your employer (e.g. super guarantee). Be careful not to over contribute as this may be costly tax wise.

The non-concessional contribution cap per year is \$180,000 for both age groups. However, the 3 year bring forward rule allows a member to contribute \$540,000 over a three-year fixed period commencing in the first year in which you make the non-concessional contributions of more than \$180,000. Although you are unable to access 'the 3 year bring forward rule' if you are aged over 65 years of age.

A spouse may be eligible to receive a tax offset for non-concessional contributions made if the spouse's adjusted taxable income (ATI) is less than \$13,800. The tax offset can be as much as \$540 for a contribution of at least \$3,000.

An individual may also receive a government co-contribution if they make non-concessional contributions given that their ATI is less than \$50,454 for the year ended 30 June 2015. The maximum entitlement is \$500 for contributions of \$1,000 or above and you must be less than 71 at the end of 30 June 2016.

The low income superannuation contribution (LISC) is another government contribution of up to \$500 also. The member must not have an ATI of more than \$37,000.

To be eligible for either of the co-contribution or LISC, you must have received at least 10% of income from business and/or employment.

An individual who is at least 55 years old may commence a transition to retirement income stream. Depending on their age, the individual will be required to withdraw a certain percentage of their balance by the end of the financial year in question. In conjunction with a salary sacrificing arrangement, this option may provide increased tax savings and ultimately increased wealth upon retirement.

With the start of a new financial year, you should make sure that you are well ahead of the game to increase one of your biggest investments in your life, superannuation.

Please note that this is general advice and ensure that you obtain specific advice tailored to your personal situation.

Cara Hall CA, Dip FP

RSD Chartered Accountants

E cara@rsd advisors.com.au

Redesdale Recreation Reserve Committee of Management Inc.

Chairman's Monthly Report

Hi Redesdaliens,

A month has passed and it only seems like yesterday that I was doing this report for June, but some great things have happened in this time.

Firstly the trees received from the CoGB have been planted in various locations around the reserve and are all looking very healthy thanks to the volunteers who planted them. A load of mulch will be delivered before the end of the month to place at the base of the new trees thanks to the CoGB.

We have also formed the boxing for the concrete bases for five bench seats also to be supplied by the CoGB. The concrete should be poured by month's end with the seats arriving early August.

The cleaner of the public toilets has resigned, so the committee is looking for anybody who may be interested to take on the position.

Interested people should contact the committee on Mobile No.0427 280 814 for a copy of the job description and remuneration.

People may have noticed the signs that have been erected at the bore tank informing the public of the requirements of Goulburn Murray Water and what is required to receive water. Reluctantly, the committee have to follow GMW's instructions.

A new fence will be erected along the west side of the oval moving the entrance to the reserve, more towards the centre, allowing more area from Lyall Rd for more fire vehicles to access Tennis Lane and not be backed up on Lyall Rd. Many exciting things continue to happen making Redesdale an exceptional place to live and visit, so until next month have a think about what you would like for your little town and let the committee know.

Les Pocock

Redesdale Recreation Reserve Committee of Management Inc.



North Central Catchment Management Authority (CMA) is putting the call out to landholders along the Campaspe River interested in applying for fencing grants.

Under the Caring for the Campaspe project, the North Central CMA has so far facilitated fencing along 26 kilometres of riverbank on 23 properties. Project manager Angela Gladman said fencing off waterways is good news for everyone.

"Landholders benefit, their livestock are healthier and fencing helps prevent erosion, improves water quality and has obvious positives for protecting riverside vegetation," she said.

Ms Gladman said the North Central CMA will continue to work with a number of landholders in 2015-16, but was on the lookout for more.

"We are targeting landholders along the length of the

Campaspe, from Ashbourne to Echuca," she said.

"Cost of materials and contract labour for a standard fence is fully covered and there are cost-sharing options for off-stream watering also available.

"Landholders will also be aware the latest Federal Budget included a tax change for farm fences to be 100 per cent deductible."

Caring for the Campaspe is a \$3.73 million project funded from the Victorian Government's Securing Priority Waterways program and managed by the North Central CMA.

For further enquiries, contact Ms Gladman on (03) 5440 1825 or email angela.gladman@nccma.vic.gov.au

For further information please contact Anthony Radford, Communications Coordinator North Central Catchment Management Authority t: 03 5440 1884

m: 0409 720 610

e: anthony.radford@nccma.vic.gov.au

@northcentralcma northccma

WHAT'S ON IN HEATHCOTE

Saturday 1 August 2015

Heathcote Bush Market - 8 am - 1:30 pm, Lions Club Project. Enquiries 0400 675 995 Venue: Barrack Reserve High St Heathcote
 "My In-laws are Outlaws" performed by Mudbrick Motley Theatre Group. Time 8pm. Bookings essential ph 0447 332 783. Cost per ticket \$12 (including door prize)
 Venue: Mona Lisa Galley 146 High St Heathcote

Thursday 6 August 2015

Heathcote U3A invites you to a Free Asthma Education Session- 10am for morning tea prior to commencement of the session at 10:30am - for catering please let the U3A secretary Barbara Clement know on 0447 332 783 Venue: Guide Hall High St Heathcote

Saturday 8 August 2015

Idavue Estate Reds & Blues- 1:30pm- 4:30pm cost \$10 music by Wilson & White. Venue: Idavue Estate, 470 Northern Hwy sales@idavueestate.com , ph 0429 617 287

Wednesday 12 August 2015

Heathcote Historical Museum- Heathcote Historical Lockup & Police Residence Museum is open every Wednesday 10am until 3pm. Venue: 19 Herriot St Heathcote

Thursday 13 August 2015

A Caring Community Expo - To be held at RSL Hall and around town. Entry \$5 Donation Heathcote Health Dementia Friendly Town. - everyone welcome regardless of ability to donate.

Saturday 15 August 2015

Heathcote Region Farmers Market- 9am-1pm. Venue: Barrack Reserve Park High St Heathcote

Heathcote Wines Masterclass Luncheon- . 11.30am for 12noon till 4.30pm. Hosted by Domain Asmara. RSVP Ph (03)54336133 or email andreas@domaineasmara.com,

Wednesday 19 August 2015

Heathcote Historical Museum- Heathcote Historical Lockup & Police Residence Museum is open every Wednesday 10am until 3pm. Venue: 19 Herriot St Heathcote

Wednesday 26 August 2015

Heathcote Historical Museum- Heathcote Historical Lockup & Police Residence Museum is open every Wednesday 10am until 3pm. Venue: 19 Herriot St Heathcote

Saturday 29 August 2015

5th Heathcote Film Festival - A program of Australian and International short films, Matinee and Evening Sessions plus a Meet the Filmmaker Session. Not to be missed! Great short films screened with local wines and food. www.heathcotefilmfestival.com.au or 0425 759 573

Venue: RSL Hall - High Street, Heathcote.

FARMERS MARKETS

Woodend Community Farmers' Market -
 Sat Aug 1st
 Cnr High & Forest Streets, Woodend -
 0487 444 090 Sharon Kittson

Kyneton Farmers' Market -
 Sat Aug 8th
 St Pauls Park, Piper Street, Kyneton -
 54 221 025 Veronica Maniford

Riddells Creek Farmers' Market -
 Sat Aug 15th
 Riddells Creek Primary School, Riddells Creek -
 0408254626 Ali Bant

Lancefield & District Farmers' Market -
 Sat Aug 22nd
 Centre Plantation, High Street, Lancefield - 0407 860
 320 Meggs Hannes

Authentic, community based farmers' markets.

BYO bags baskets & trolleys.

Friendly dogs welcome on a leash.

Proudly accredited with the Victorian Farmers' Markets
 Association. www.vicfarmersmarkets.org.au

Mia Mia Opera 2015

Twilight Opera Sat 7th November

Daylight Opera 8th November

at Mia Mia Hall, Valley Rd

Mia Mia Mechanics' Institute
 is delighted to announce its 2015 Opera Program
 with two performances featuring singers from
 Opera Studio Melbourne. The Twilight Opera entry
 fee of \$50 includes finger food from 6PM
 and a gourmet supper afterwards.

The Daylight Opera fee of \$25 includes
 refreshments after the 1.30 PM performance.

"David and I were absolutely thrilled with the quality and
 professionalism of the performances. The joy on the faces
 the audience was so pleasing, not just for us, but also for
 the performers."

- Lynne McDonald, at the 2014 Mia Mia Opera.

"The two concerts at Mia Mia were the culmination of
 weeks of hard work. It was a joy to perform in front of two
 such receptive and enthusiastic audiences. The energy in
 the Hall drove the performers to push themselves to a level
 performance resulting in truly communicating their stories,
 and in so doing, bringing Opera to life."

- Matthew Nash, Manager of The Opera Studio

Our sponsors: Our performers are sponsored by The Alice
 Amy McDonald Trust, managed by Mia Mia locals David and
 Lynne McDonald. The concert quality piano is loaned to us by
 Alan & Christina Weiss. Local wineries Redesdale Estate and
 Ruperts Ridge provide 5-star accommodation for the
 performers. This event is supported by the City of Greater
 Bendigo.

Bookings open on 7th July 2015 at www.trybooking.com/IGIC



Tamzyn Alexander won
 the 2014 Mia Mia
 Opera People's Choice
 award and the Judges'
 Award. We are
 delighted that Tamzyn
 will be returning to Mia
 Mia in 2015, along with
 some of her colleagues
 from The Opera
 Studio. You are invited
 to join us as we enjoy
 their voice control and
 musicianship, along with
 the dramatic and
 physical skills that so
 captivated our
 audiences last year.

of

of

Letter from Steph Ryan:

Dear Editor

The start of the new financial year has
 brought with it a massive hike in the fire
 services property levy (FSPL).

Despite pledging before the election that
 there would be no increases to any taxes or
 charges, Labor is gouging an additional \$42.1
 million from Victorian property owners this
 financial year.

In the local government area of Mitchell,
 the FSPL rate will increase by 8.8 per cent, in
 Greater Bendigo by 8.5 per cent, in Greater
 Shepparton 7.9 per cent, in Campaspe by 7.7
 per cent, in Strathbogie by 7.6 per cent and in
 Benalla by 7.3 per cent.

Property owners throughout the Euroa
 electorate, including residents, commercial
 businesses, farmers, churches and sporting
 clubs are being sluggish with these increases.
 The former Coalition Government changed
 the fire services levy to make it fairer and
 more equitable, particularly for country Vic-
 torians. Our reforms saw the cost to farmers
 drop by around \$300 a year.

It concerns me that Daniel Andrews is
 putting politics before people with these
 increases.

Steph Ryan

MP Member for Euroa Deputy Leader of The
 Nationals

2nd DINNER +TALK

On Friday, 17 July the Redesdale & District Association hosted a 'Dinner + Talk' at the Redesdale Hall in order to promote Kez's Hideaway, a breast-cancer retreat that is currently being built on Racecourse Road Redesdale. The night gave members of the Otis Foundation a chance to meet local residents, tell their story, and explain how this retreat would benefit women and the families of those women suffering from the horrible disease that is breast cancer.



Come and try our coffee at the
Rural Café

In the centre of Redesdale

Phone: 03 5425 3271

Open: 8am to 6pm

Now serving Norma's famous apple pie!



Left: A full house listens to a moving address by Paul Gray (below left) and Emily Gray, Pauls daughter.



When we donated the land for the retreat to be built, we did it to help breast cancer sufferers, we did it as a family and to teach our children valuable life lessons. To a lesser extent we hoped the local community would embrace the project. 114 local residents showed their support by being at the dinner and talk and raised close to 3 thousand dollars on the night.

Many offers of help and support also came through in the form of goods and services.

Congratulations to the local community for what was described by Paul Gray (the builder of Kez's Hideaway



Raffle and Silent Auction results

Donors for the silent auction were:

Ruperts Ridge Winery (12 bottles of wine)	raised \$400
Kevin Foley (artworks)	raised \$900
Campbell family (necklaces and lamb box)	raised \$265
Coliban Springs (Charlie Carp and photograph)	raised \$335
La Bonta Restaurant, Kyneton (dinner for 2)	raised \$110
Mount Lofty Estate (tying slings)	raised \$55
Total \$2,065	

Raffle on the night (Campbell's trailer of wood, Rural Cafe voucher, and wine from Rupert's Ridge) raised a total of **\$707**.
therefore the total raised for the Otis Foundation on the night was **\$2,772.00**

in memory of his late wife Kerry) as "overwhelming support ". The hideaway itself is expected to be open in November and will provide a much needed break, free of charge, to potentially 104 different women and their families every year.

They will be able to enjoy the quiet rural atmosphere (and kangaroos) or explore what the region has to offer. We look forward to following the project's progress and sincerely thank those who have given their support so far.

Many Thanks, The Campbell Family.



RSD Chartered Accountants deliver clear, practical advice with one aim - to make sure our clients succeed and grow.

Business Services - Taxation Planning - Financial Planning
Audit & Assurance - SMSF Advice & Management

WE ARE COMMITTED TO YOUR SUCCESS

 **RSD**
Chartered Accountants

Level 2 10-16 Forest Street, BENDIGO VIC 3550
P: 03 5445 4200 F: 03 5444 4344
rsd@rsdadvisors.com.au

DEADLINE

**FOR CONTRIBUTIONS TO THE
BRIDGE CONNECTION**

THE 20TH DAY OF EACH MONTH

Quote of the week:

**“In nature there are neither re-
wards nor punishments -
there are consequences”**

Robert Green Ingersoll

Tax Returns BAS Super
Open late and Saturdays
KMATAX
& accounting

43B High Street, Kyneton
ph: 5422 3178
mob: 0498 389 184
www.kmatax.com.au



KMATAX & Accounting is a CPA Practice

KN195353/W

4

Recipe of the Month



Butterscotch Choc Chip Brownies

You will need an 18cm square cake tin, lined with baking paper.

100g butter or margarine [can do half each]
175g soft brown sugar
2 eggs
50g [or more if you like] of Choc Chips
75g S.R Flour [can use wholemeal flour]
1/4 teaspoon baking powder
40g cocoa powder and icing sugar to decorate

Place all ingredients NOT CHOC CHIP in a mixing bowl and mix until well combined. Stir in Choc Chips.

Bake in moderate oven for 40-45mins.

Cool on a wire rack.

Dredge with sifted icing sugar then cut into little squares.

Walnuts can be used instead of Choc Chips.

Thank you, Janette Johnson

...continued from front page:

Jess and Jamie love working at the café where they say the atmosphere is warm and friendly and they enjoy bringing people together over home cooked meals. "Every day is different", says Jess, "and we meet such interesting people. It is great to be next to the gallery where the two businesses compliment each other. There is a good flow through the open door between the gallery and us. It's great to support other local businesses – Mount Lofty jams are flying off the shelves!"

Asked how they would like things to develop in Redesdale, Jess and Jamie said that they would love to see the pub reopen and for there to be a farmer's market. Jamie describes Redesdale as a lot smaller and quieter than he is used to. He is from Leicester in England. He describes it as a safe place where people know and are supportive of each other.



Both local residents and visitors to Redesdale are looking forward to warmer days when they can sit in the sun and enjoy great coffee, home-cooked meals, maybe a glass of wine or a cool beer capped off by some of Norma's famous apple pie, which is apparently selling like hot cakes! In the absence of a functioning hotel, people now have two options available to them for drinks and meals, Dino's bar at the General Store (featured last month) and the thriving Rural Café.



Above: Shane, Elizabeth, Jamie and Jess.
Left: Don White, Paul and Martine Atkins enjoy a late Sunday breakfast.
Below: new outside seating areas behind the cafe.



MUDBRICK MOTLEY THEATRE GROUP
PRESENT

'My Inlaws are Outlaws'

by Devon Williamson
by arrangement with David Spicer Productions
www.davidspicer.com.au

A tale of violence, family values and really bad accents...

Heathcote: 8 pm Friday 31st July
& Saturday 1st August
Redesdale matinée: 2 pm Saturday
8th August
Tickets \$12 including door prize

Bookings essential:
0447 332 783

Warning: contains naughty words and scurrilous behaviour



Metcalfe Vintage Tractor Pull Yes it's on again!!! Combined with Woodchop and Swap Meet

19th and 20th September 2015

On Saturday 19th and Sunday 20th September the Metcalfe Community Association will be holding the inaugural Swap Meet (Saturday and Sunday) and Vintage Tractor Pull and woodchop (Sunday) event in picturesque Metcalfe at the local reserve. It starts at 10am til 4.00pm and will entice with many attractions for young and old.

THE SWAP MEET HAPPENS BOTH SATURDAY AND SUNDAY.

On the Sunday there will be historic vehicles, Veteran and vintage cars, static engines, miniature models and many new attractions, as well as an array of stalls stocked with local wines, olive products, preserves, handmade jewellery, chocolates and tractor pull merchandise.

AND OF COURSE THE TRACTOR PULL EVENT AND WOODCHOP ATTRACTING ENTRANTS FROM ALL OVER VICTORIA!!

Entertainment includes miniature train rides, a new playground for the kids and music. Plenty of food, tea and coffee will be available.

A great family day is assured. \$5 entry, \$20 for a stall site.

Mel.Ref. 621, E11

For further information or to book a stall site please contact Marg on 0416024698.





Elphinstone

Post Office and General Store
**Newspapers/ Magazines,
Origin Gas Bottles, Bread,
Milk & Groceries,
Postage Services**

**Gill and Dave 5473 3200
9 Doveton Street, Elphinstone**



Redesdale General Store

- Fully Electronic Postage Service
- Takeaway Food
- Espresso Coffee
- Full Alcohol Licence and Bottle Shop with Local Wines
- Banking
- Fuel and Oil
- Newspapers
- Groceries

Come in for some great tasting coffee!



Open 7 Days



**Jenny and Dino: 5425 3154
2609 Main Road, Redesdale**

Langley Primary School Celebrating 100 Years

**Sunday 25th October 2015
12 – 4 pm**

**It is our great pleasure to
invite all past and
present students,
families, friends and staff
of Langley Primary
School No. 1275 to attend
our "100 years"
celebration.**

We are planning a relaxed afternoon get-together to allow everyone the chance to reminisce about the past, celebrate the present and consider the future.

There will be speeches, an unveiling of a mural, the placement of a time capsule, a performance by the current students, games, coffee van, cake stall, sales of Langley history book and commemorative wine

All attendees are invited to dress in costume if they wish

RSVP 11th October '15
Phone 03 54 234125
*please advise number of adults/children attending

R K Earth Ross Knight Earthmoving

Servicing Mia Mia, Redesdale, Heathcote & District



Let us help you with your next road, dam or house site.

Over 40 years experience in the district

Phone Ross: 0428 843 988

Eliis: 0428 571 938

or the office: 5425 5506

Email: info@rkearth.com Web: rkearth.com