



ISSUE NO. 79 OCTOBER 2016

FREE

For the Mia Mia- Redesdale Region including:

• Heathcote • Derrinal • Glenhope • Baynton • Sidonia  
• Barfold • Langley • Sutton Grange • Elphinstone • Kyneton

# BRIDGE CONNECTION COMMUNITY NEWSPAPER



facebook.com/RedesdaleMiaMia

Are you heading to university in 2017?  
Our Scholarship program is coming soon!

Heathcote & District  
**Community Bank®** Branch

 **Bendigo Bank**

bendigobank.com.au/heathcote 

Bendigo and Adelaide Bank Limited, ABN 11068049178 AFSL/Australian Credit Licence 237879. S48951-10



Opening Friday 28th Oct Redesdale Hall @ 6pm

Redesdale.net

**Friday 28th to Sunday 30th OCTOBER**

Redesdale Recreation Reserve

Opposite Redesdale Hotel

## Kyneton Toyota



**TOYOTA**

"We are Proud to support  
Bridge Connection  
& the local Macedon Ranges Community"

*JUST OFF THE FREEWAY!*

"Proud to have LOCALS in the  
Drivers Seat"



*Oh what a feeling!*

kynetontoyota.com.au | 03 54 210 210

15 mins from  
Melbourne  
Airport.



## Kepala Pet Resort

LUXURY ACCOMMODATION FOR PETS

Kepala Pet Resort provides five star luxury accommodation for a wide range of pets including cats, dogs, rabbits and guinea pigs.

We provide overnight, weekend and long term accommodation for all breeds of cats and dogs. Our friendly and experienced staff, understand the needs and expectations of both customers and their pets and therefore are dedicated to ensuring a happy, safe stay for your pet.

**Kepala Pet Resort & Canine Country Club**  
55 Edwards Rd Diggers Rest

For more information: (03) 9740 1272

Email: [info@kepala.com.au](mailto:info@kepala.com.au)

[www.kepala.com.au](http://www.kepala.com.au)

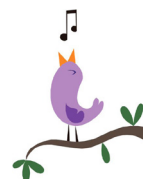
## BIRD QUIZ with NIGEL HARLAND



Hi again and congratulations to **Jodi Brophy** who won the quiz last month. The answer, of course was the **Laughing Kookaburra**, a very familiar bird to you all. You will often hear the laughing call first thing in the morning or in the evening. The Kookaburra is a member of the Kingfisher family and indeed the largest of the Kingfisher species in Australia. As is the norm for Kingfishers, it will sit quietly on a branch waiting for a delicious morsel such as a skink or lizard. There is another Kookaburra found in Australia called the Blue-winged Kookaburra. It has a similar call, but is only found in the far north.

So, moving on to next month we have a bird which is not always a backyard bird, but if seen cannot be ignored. Think royalty!

Contact us on with your guess about which bird this is and **WIN a \$20 book voucher** from Aesop's Attic bookshop, Kyneton. Send answers to [bridgeconnection.editor@gmail.com](mailto:bridgeconnection.editor@gmail.com) or phone or text to: 0407 116899



## The BRIDGE PET PALS proudly sponsored by

KYNETON  
VETERINARY  
HOSPITAL



Redesdale Mia Mia  
Primary School  
Pet Sheep  
"Roast" and her  
twin lambs

Send us a picture of your very special pet and a few words to describe him or her and why you love your pet so much. This years winner of \$100 will be announced at the Festival opening Oct 28th. Start sending photo's for next year.

Kyneton Veterinary Hospital  
Where animal lovers heal  
Call us today on  
035422 1099  
67 High street Kyneton



ADVERTISEMENT

# VOTE 1

**Margaret O'Rourke** for Eppalock Ward

"Your voice of experience  
in Council" P: 0427 019 900

[www.MORforBendigo.com.au](http://www.MORforBendigo.com.au)

Authorised by Margaret O'Rourke,  
Shop2, Strath Village, cnr Edwards Rd  
and Condon St, Strathdale





# EDITORIAL

Great news for the Bridge Connection this week. We have received a grant of \$1000 from the City of Greater Bendigo to help our printing costs. Our heartfelt thanks to the Council for their generosity. We have also heard that the Heathcote Community Bank has given a grant of \$250 for the prizes for the photo competition. (See page 10). Hope you are all sending in your photos for this!

Congratulations to Beth and Garth at the Redesdale Hotel on their one year anniversary of reopening the pub! What a blessing it has been.

In October the "Bridge Abroad" and "Pet Pals" competition will be judged and the prizes will be awarded at the festival opening on Friday October 28th at the Redesdale Hall. See you there!

**Kathy Hall  
and  
Regina Bennett  
Co-editors**

bridgeconnection.editor@gmail.com  
ph: 0407 116899

**DEADLINE  
20th of each month**



# CONTENTS

Regular articles	Page	Special articles	Page
Advertising rates	26	CFA update	17& 19
Bird Quiz	2	Redesdale Mia Mia School	4
Bridge Connection contacts	26	Hall Happenings	12
Church Services	12	Garden Sculpture Exhibition	6
Editorial	3	Castlemaine & District festival of Gardens	4
Farmers' markets	9	MGs MGs MGs	19
Garden Patch	14 & 15	Malmsbure Village Fayre	20
Letters to the Editors	18	How good is your Pub	23
Pet Pals	2	Sustainable House Day	24
Politics	8 & 9	A day on the green	21
Quote of the month	18	<b>Notices</b>	<b>Page</b>
Rainfall	12	Fire fighting field day	18
Recipe of the month	18	House Gallery Exhibition opening	27
RRRC Chairman's report	17	Malmsbure Village Fayre	27
Subscription	26	Major Mitchel Expedition	20
The Bridge Abroad	25	Mia Mia Opera	26
What's on in Heathcote	7	Castlemaine & District festival of Gardens	16
Your Health	13	Party equipment	6
RADA	23	Pet Pals prize	5
		Photo Competition	10
		Puppy Play date	5
		Redesdale Festival	10,11,12,18
		Redesdale Hall hire	3
		Regular sponsors	7

## Proudly printed in Kyneton

Castlemaine, Kyneton & Gisborne  
**CopyCentre**  
Printing together for our community

Design & Pre-press  
Plan Scanning, Finishing Services.

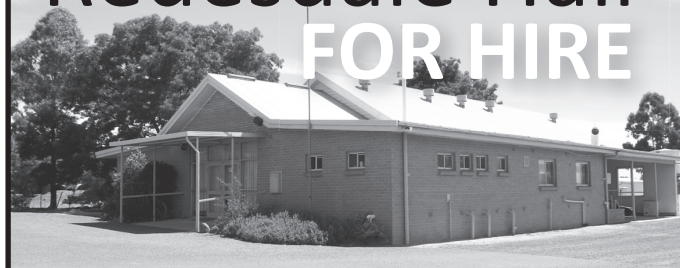
*Not just a Copy Centre...  
we are so much more.*



**www.windarring.org.au**

58 Mollison Street  
Kyneton  
03 5422 2400

## Redesdale Hall FOR HIRE



Ammentities are available for catering, meetings, weddings and club or family celebrations.

Please phone

**Carolyn (03) 5425 3194** for more information.

### Redesdale Hall Activities:

- 1st Monday monthly, 10am or 4.15pm, Bridge Connection Committee meeting
- 2nd Tuesday monthly, 1pm - Hall Comm. Meetings.
- 2nd Tuesday monthly, 7 pm - Rec. Reserve Meetings.

### Roaster for Hire

Commercial sized roaster available for hire from the Redesdale and District Association.

\$75 for members and \$100 for non-members.

(Free hire to Hall, Rec. Reserve Committee, and CFA)

**Phone 0418 130 206.**





## Kelsey Griffin at Redesdale Mia Mia Primary School

basketball player.

She grew up in Eagle River, Alaska, and attended Chugiak High School. Kelsey is the eldest daughter of Jim and Jan Griffin; she has one older brother, Geoff and a younger sister, Jayme.

Kelsey played college basketball with the Nebraska Cornhuskers.

In 2010 Kelsey played with the Connecticut Sun WNBA Basketball team for 5 seasons.

Kelsey has also played international basketball in the EuroLeague, Israel, for Pécs 2010, a professional basketball team in Pécs, Hungary, playing in the Hungarian A league, one of the premier leagues in EuroBasketball.

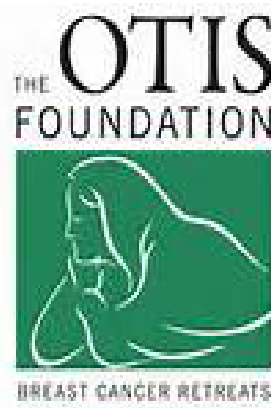
Griffin signed with the Bendigo Spirit for the 2012/13 Australian Women's National Basketball League. She was instrumental in Bendigo's WNBL championship victory, claiming grand final MVP honours after scoring 20 points and collecting 11 rebounds. Kelsey achieved her personal dream in 2016, becoming an Australian citizen. With this came the honour of being selected in the Opals squad, working towards the goal of competing for Australia at the Rio Olympic Games. She attended two training camps with the squad but her journey came to an end with national teams only allowed one naturalized player for an Olympic campaign. Kelsey now calls Bendigo home and hopes to be a contender for selection for the Tokyo Olympics in 2020.

On Friday the 2nd of September Kelsey Griffin a Bendigo Spirit WNBL player came to Redesdale Mia Mia primary School to run a coaching clinic for the children as a thankyou to the Redesdale community for supporting Kez's Hideaway.

Kez's Hideaway is a purpose built breast cancer retreat built in Redesdale for the Otis foundation, available all year-round.

Kelsey is an ambassador for the OTIS foundation and volunteers her time. Kelsey's experience with breast cancer survivors has been an inspirational one. Kelsey has two grandmothers, Grandma Phyl and Granny Betty, who are breast cancer survivors. And also even had a great grandmother who survived breast cancer. When OTIS was announced as The Bendigo Spirit's Community Partner, the Spirit players got to meet the OTIS team. Once Kelsey heard about the amazing work OTIS is doing all over Australia, she wanted to know how she could help. Family is so important to Kelsey and to give a family time away together to enjoy is priceless.

Kelsey Griffin, born July 2 1987, is an American-Australian professional

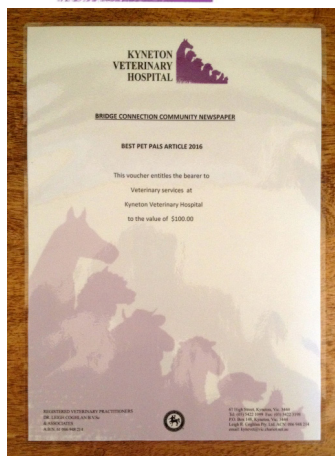




# KYNETON VETERINARY HOSPITAL



This generous prize of \$100 dollars Voucher will be presented by Leigh Coghlan of Kyneton Vet hospital on the Opening night of the Redesdale Festival. Redesdale Hall from 6pm.



**DEFIBRILLATOR  
AT THE REDESDALE STORE  
24/7  
CALL 5425 3154 IF THE STORE IS CLOSED**



## QUALITY FARM SHEDS

<b>Machinery Sheds</b>	<b>Barns</b>
<b>Hay Sheds</b>	<b>Horse Arenas</b>
<b>Stock Shelters</b>	<b>Workshops</b>
<b>Shearing Sheds</b>	<b>Garages</b>

**Building Quality Farm Sheds since 1975**

**CENTRAL**  
steelbuild

T/A Central Viro Sheds  
**1300 995 630**  
8 Hoyle Court, Kyneton

## Roger At Dinner



It has been a big year for Roger. He has been around the entire world representing the Redesdale Festival. His last mission was in the South Pacific. You will see from the photo that he enjoyed a formal dinner with a number of New Zealand visitors to Bora Bora. As roving ambassador, he has made a number of international friends who now know about the Redesdale District and its famous art show and festival. Roger will be at the Festival, ready to meet and greet our visitors

**Bendigo**  
Travel & Cruise Centre

**336 HARGREAVES ST. BENDIGO**  
**www.bendigotravelandcruise.com.au**  
**03 5441 8811**

Find us on

**creative  
designs  
for your  
business**

logos menus flyers posters  
invitations brochures magazines  
business cards advertisements  
letterheads with compliment slips  
full business imaging

lyn ingles | graphic designer  
blupen@ncable.net.au  
0429 911 980

Sponsoring the 'Bridge Connection'





## 2016 Mica Grange Spring Open

### Garden Sculpture Exhibition

#### Merging the wonders of Art with Beauty of Garden

Each weekend from 22 October to 20 November plus each day of the Castlemaine Festival of Gardens (29 October to 6 November), the expansive picturesque gardens of Mica Grange will open to the public from 10am to 4pm for their Spring Sculpture Exhibition.

18 sculptors will exhibit more than 70 small and large creations displayed in a vast range of mediums including copper, stone, bronze, aluminium, steel, wire, tin, ceramics and mosaics. A wide range of garden art, plants and preserves are also available.

The exhibition provides garden and art lovers with ideas on how they can enhance their own gardens through the merging of sculpture, garden art and plants. There is something for everyone with prices ranging from \$15 to \$7000. A feature of this year's garden is the addition of a Fairy Village to the Fairy Garden.

Entry is \$5 per adult. Morning and afternoon tea is served on the large decking with its panoramic views across the Sutton Grange Valley.



#### *Mica Grange* Spring Sculpture Exhibition and Open Garden

Featuring 16 artists and over 60 exhibits

*Merging the wonders of art with the beauty of garden*

373 Faraday Sutton Grange Road, Sutton Grange, Victoria 3448



Open each weekend from 22 October to 20 November 10am - 4pm

Open Cup week October 31 - November 4

Entry \$5 – Morning and Afternoon Tea  
Sculptures, Plants, Garden Art and Preserves

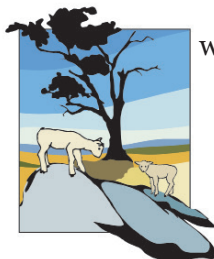
Group bookings and lunch available during the week

[www.micagrangegarden.com.au](http://www.micagrangegarden.com.au)

Contact 03 5474 8261 | email: [micagrangegarden@gmail.com](mailto:micagrangegarden@gmail.com)



[www.redesdale.net](http://www.redesdale.net)



[www.redesdale.net](http://www.redesdale.net)

Redesdale

**Make your special celebration a party to remember!**

#### Party equipment for hire

Tables - ( 183cms ) rectangle, plastic (\$10 each)

Chairs - white plastic (\$2 each)

Umbrellas - charcoal (\$20 day)

Table cloths - white (\$5 each)

Other various party items for hire



**For additional information contact  
0418 130 206**

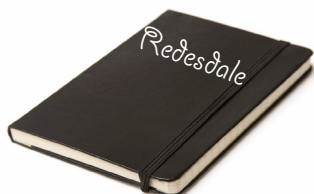


## Redesdale Book Launch

On Friday 28th October from 6pm, the new book about Redesdale will be launched by Ken James at the Festival opening @ the Redesdale Hall.

Copies will be available at the price of \$35.00. There will also be copies of A history of the Redesdale Railway Line 1891- 1954 available at a cost of \$25.00

This is a great chance to own a little bit of our history.



## BIG THANK YOU TO OUR REGULAR SPONSORS

BLUE PENCIL PUBLISHING - page 5

KYNETON VET HOSPITAL - page 2

KYNETON COPY CENTRE - page 3

BENDIGO TRAVEL AND CRUISE - page 5

ELPHINSTONE GENERAL STORE - page 28

REDESDALE GENERAL STORE - page 28



## What's on in the Heathcote Region

**Tuesday 4 to 6 October 2016**

**Elmore Field Days-** More details go to website- [www.elmorefelddays.com.au](http://www.elmorefelddays.com.au)

**Saturday 8 October 2016**

**Heathcote Wine and Food Festival -10:30am - 5:30pm.** Tempranillo. Website: [www.heathcotewinegrowers.com.au](http://www.heathcotewinegrowers.com.au)

Ph: 0419549743 Email: Venue: Heathcote Agricultural Showground, Cnr Chauncey & Caldwell Streets, Heathcote

**Art Show "A Spring Exhibition"**- Three Artists: Anita Adams, Richard Bonn & Karen Macartney. Venue: The Mechanics Institute 121 High Street Heathcote 10am to 6pm Free Admission.

**Heathcote Quilters Biennial Quilt Exhibition- Time: 10am-4pm.**

Entry \$7. Venue: RSL Hall High St Heathcote

**Sunday 9 October 2016**

**Heathcote Wine and Food Festival -10:30am - 5:30pm.**

[info@heathcotewinegrowers.com.au](mailto:info@heathcotewinegrowers.com.au) Venue: Heathcote Agricultural Showground, Cnr Chauncey & Caldwell Streets, Heathcote,

**Art Show "A Spring Exhibition"**-

**Heathcote Quilters Biennial Quilt Exhibition-** Time: 10am-4pm. Entry \$7. Venue: RSL Hall High St Heathcote

**Saturday 15th October 2016**

**Heathcote Region Farmers Market- 9-am - 1pm.** Venue: Barrack Reserve Park High St Heathcote.

**Saturday 22 October 2016**

**Mia Mia Twilight Opera – Time: 6pm. Cost: \$60:00.** Venue: Mia Mia Hall Valley Rd Mia Mia

**Sunday 23 October 2016**

**Mia Mia Daylight Opera – Time: 1:30pm. Cost \$30:00.** Bookings now open at [www.trybooking.com/MGJK](http://www.trybooking.com/MGJK) .Venue Mia Mia Hall Valley Rd Mia Mia

**Friday 28 to 30 October 2016**

Family Weekend of Fun Redesdale Festival- Time 10am-4pm,

Venue: Agnes Mudford Reserve Kyneton- Redesdale Rd Redesdale (opposite Redesdale Hotel)

# Steph Ryan MP

Member for Euroa

2/55 Carrier Street, Benalla VIC 3672  
[www.stephryan.com.au](http://www.stephryan.com.au)  
03 5762 2100

This publication was funded through Parliament's Electorate Office and Communications budget.



## STEPH RYAN MP

Deputy Leader of The Nationals  
Shadow Minister for Training Skills Apprenticeships  
Shadow Minister for Young Victorians  
State Member for Euroa

### Minister’s botched attempt to ‘rescue’ TAFE

Steve Herbert today failed to confirm his hand-picked boards followed proper processes in a botched implementation of new TAFE legislation. New boards were announced for Victoria's 12 TAFEs on August 11 – six weeks after the government spilling all of the boards.

Ministerial appointed board members include three former Labor MPs, a former Labor candidate and a co-convenor of EMILY's list.

In parliament today, Steve Herbert refused to provide an assurance his handpicked boards would allow co-opted directors to have a say in the election of the chair.

It is the latest botched attempt to introduce new legislation by Labor, after the shambolic implementation of a new code of conduct for local councils earlier this week.

It has become apparent Steve Herbert is completely incapable of handling even the most basic of tasks.

Daniel Andrews promised 'independence' and 'proper governance' for these TAFEs, but these boards have become just another way for Daniel Andrews to bully out any opposition.

The Andrews Government must now guarantee to the public proper process was followed and that these boards will not become another political puppet beholden to Daniel Andrews' petulant demands.

Media contact: Emma Manser 0437 225 386  
[emma.manser@opposition.vic.gov.au](mailto:emma.manser@opposition.vic.gov.au)  
**Liberal National Coalition**

# MIA MIA FLOWER SHOW


## Thursday 27th October MIA MIA HALL




**Entries by 11am**  
**2 Course meal at 12 noon**  
**Entries and info:**  
**Jenny 54222481**  
**Wendy 54255590**

# Todd PROPERTY


## Real Estate Sales & Property Management with Service.



Brad Todd  
Director



Barb Walker  
Sales Consultant



Walter Morelli  
Property Consultant

*"We help make dreams a reality"*

**5433 2288**  
**95 High Street Heathcote**





Federal Member for Bendigo

**LISA CHESTERS MP**

PO Box 338 Bendigo 3552  
Cnr Williamson & Myers Sts, Bendigo 3550

T: 034 5443 9055 • F 03 5443 9736  
E: Lisa.Chesters.MP@aph.gov.au

Twitter: @LMChesters • Facebook: /LisaChestersBendigo



**Labor**

THE HON MARK DREYFUS QC MP  
SHADOW ATTORNEY-GENERAL  
SHADOW MINISTER FOR EMERGENCY SERVICES  
MEMBER FOR ISAACS

LISA CHESTERS MP  
SHADOW ASSISTANT MINISTER FOR WORKPLACE RELATIONS  
SHADOW ASSISTANT MINISTER FOR RURAL AND REGIONAL AUSTRALIA  
FEDERAL MEMBER FOR BENDIGO

LABOR RE-OPENS VICTORIA'S EMERGENCY MANAGEMENT INSTITUTE

Federal Labor applauds the announcement by the Victorian state government that the former Australian Emergency Management Institute in Mount Macedon, cruelly shut last year by the Abbott-Turnbull government, will be reopened.

The Victorian Emergency Management Institute, as it will now be known, will be able to resume the important role it played in training and development for Victoria's emergency services, including the Country Fire Authority. Its closure in June 2015 saw up to 60 people lose their jobs and has made it far harder for volunteers and emergency services workers not just in Victoria but from around Australia to do their jobs well. The short residential training courses offered by the Institute were considered highly valuable for those who were able to attend.

The closure of the Institute and failure to replace its services in any meaningful way shows the absolute hypocrisy of the Turnbull Government when it comes to our emergency services. Mr Turnbull and Michaelia Cash are happy to use CFA volunteers for political point scoring in their anti-union crusade. But when it comes to providing the basic services they need, they are just not interested.

Shadow Minister for Emergency Services Mark Dreyfus said: "I congratulate Dan Andrews and James Merlino on stepping in to address this severe dereliction of duty to emergency services volunteers by the Abbott-Turnbull Government. Everyone knows proper training is needed to do any job properly, but Mr Turnbull and Michaelia Cash were happy for our emergency services to go without. It is shameful, and it is right that it should be fixed."

Shadow Assistant Minister for Workplace Relations and Member for Bendigo Lisa Chesters said: "The Turnbull Government isn't interested in helping volunteers, its only interest is politics. The Turnbull Government has been peddling mistruths to our brave firefighting volunteers from the outset and Labor will continue to hold the government to account for those lies."

Ms Chesters said it also defied belief that the Abbott Turnbull Government dismantled a centre of excellence for natural disaster and emergency management that was based in the heart of a bushfire-prone area. "The local community has been anxious since the Liberals shut this vital facility," Ms Chesters said.  
MONDAY, 19 SEPTEMBER 2016

## FARMERS' MARKETS

Woodend Community Farmers' Market  
Sat Oct 1st  
Cnr High & Forest Streets, Woodend  
0487 444 090 Sharon Kittson

Daylesford Farmer's Market  
Sat Oct 1st  
Daylesford Primary School  
03 5664 0096 Peter Arnold

Kyneton Farmers' Market  
Sat Oct 8th  
St Pauls Park, Piper Street, Kyneton  
54 221 025 Veronica Manifold

Riddells Creek Farmers' Market  
Sat Oct 15th  
Riddells Creek Primary School, Riddells Creek  
0408 254 626 Ali Bant

Heathcote Region Farmers' Market  
Sat Oct 15th  
Barrack Reserve, High Street, Heathcote  
Sherrie Coote 0417 598 460

Lancefield & District Farmers' Market  
Sat Oct 15th  
Centre Plantation, High Street, Lancefield  
0407 860 320 Meggs Hannes

Maldon Market  
Sun Oct 9th  
[www.maldonnc.org.au/ivf](http://www.maldonnc.org.au/ivf)

# CONNOLLY GLASS

- Broken Window Repairs • Mirrors
- Balustrades • Splashbacks
- Shower Screens: Framed
- Semi Frameless & Frameless
- Retro Fitted

**Double Glazing & Commercial Window Frames & Glazing**

**0428 535 101**

**177 Lyell Road, Redesdale. Vic. 3444**

Email: [chrisjen@bigpond.net.au](mailto:chrisjen@bigpond.net.au)



## I STAND WITH YOUR CFA !

Since October 2012 when I was elected as one of 3 councillors to represent the Eppalock ward I have argued against rate rises and tried to ensure that your voices are represented to get a fairer go for expenditure on the basic needs of Redesdale and Mia Mia residents and farmers. From the school court bowl, to the bridge naming, to the cricket pitch and reserve issues, and now the community hub, I have advocated to Council on your behalf. And will continue to do so whilst I am your representative. I am very concerned about the CFA in our region and stand with the CFA volunteers. I intend to run again in the Council elections in October and hope you will continue to support me.

**Contact Cr Helen Leach at**  
**h.leach@bendigocouncillors.org.au**  
**phone 0419 549 574**  
**Authorised by B.Leach 120 NealSt Bendigo**

## Photographic exhibition and competition

On 29th & 30th of October at the Redesdale Hotel

Heathcote & District  
Community Bank® Branch

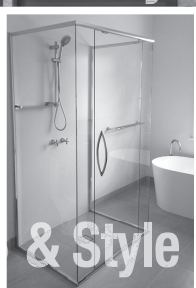


Thank you to Heathcote & District Community-Bank for Sponsoring the prize for the photo competition.

The prize will be announced at the opening of the Redesdale Festival on Friday Oct 28th @ Redesdale Hall from 6pm for application form please contact 5425 3100.

*Please let any budding photographer's know!*

Turn your house  
**into a home**  
with Tucks  
locally made products



- Aluminium and Timber Windows
- Window Replacements • Security Doors
- Shower Screens • Wardrobe Doors

We are in your area regularly and offer a **FREE** measure and quote service.

**We can offer supply and install prices.**



**Tucks**  
Windows  
**BENDIGO**

Celebrating 43 Years  
providing top quality  
products and  
professional  
friendly service.

P: 03 5446 8855 E: tuckswindows@impulse.net.au

**www.tuckswindows.com.au**



PROFESSIONAL RELIABLE SERVICE  
RESPECTFUL HANDLING  
CERTIFIED, TEN YEARS EXPERIENCE

REASONABLE RATES, NO POWER TOOLS

**0422 021 064**  
**www.edequinedentist.com**



## The Barfold 40k pop-up restaurant

Barfold Hall

Friday 14th October

and Saturday 15th October,

from 7pm.

Now in its third year, the 40k pop-up restaurant features food and wine sourced within 40 kilometers of Barfold in central Victoria.

Local chef, Roland Schaedle, will prepare a fabulous meal showcasing the best our region has to offer.

Bookings are essential, and numbers are limited so get your tables together and book online:

<https://www.trybooking.com/Booking/BookingEventSummary.aspx?eid=226260> or [www.trybooking.com](http://www.trybooking.com) and search for 'Barfold'

Any Enquiries please contact either:

Andrew Ferrington on 0411 157 558,

[andrew.ferrington@gmail.com](mailto:andrew.ferrington@gmail.com) or

Sandra Aitken on 5423 4225,



## Redesdale Roofing & Plumbing

Let us make your home safe... Call us for a quote today!

Colorbond roofing, replacement or new roofing.  
Galvanised roofing, replacement or new roofing.  
Zinc roofing, replacement or new roofing.  
Gutter renewal. Gutters for new homes, shedding.  
Roof repainting, tiles or tin.

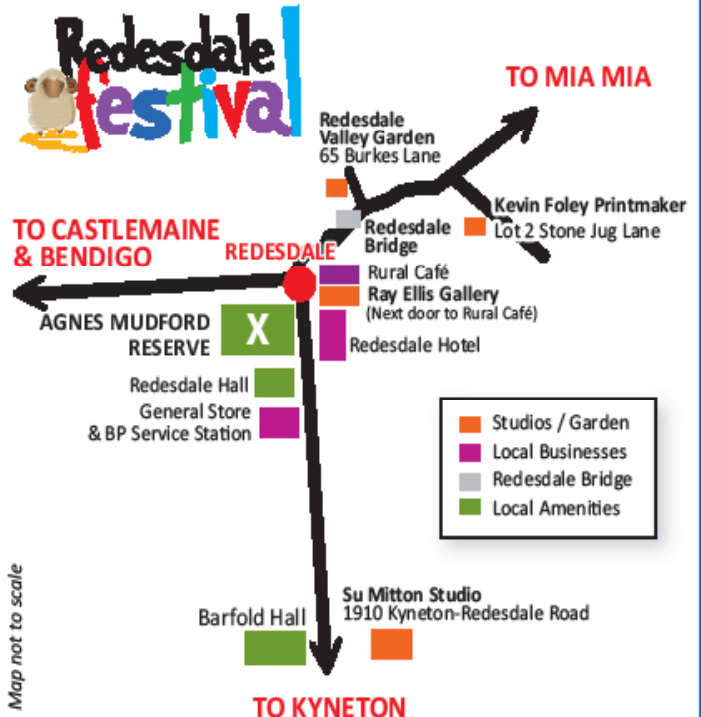
**0456 721 076**

298 North Redesdale Road Redesdale

[www.redesdaleroofingandplumbing.com](http://www.redesdaleroofingandplumbing.com)



## Event Locations



## The ALBION KYNETON



The Albion offers a fine selection of local wines and famous beers on tap. Local produce from the Macedon Region is carefully prepared for classic Italian dinners.

Children are catered for with a special menu just for their discerning palates.

The Albion is ideal for functions or parties. and offers indoor restaurant and outdoor courtyard dining.

### Hours of Operation:

7 Days a Week 12noon till Late

• Lunch 12noon to 2pm • Dinner 6pm to 9pm

Phone for bookings (03) 5422 2066

Email [drinkanddine@thealbionkyneton.com.au](mailto:drinkanddine@thealbionkyneton.com.au)

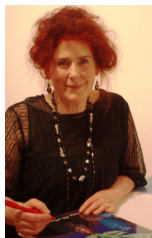
1 Mollison Street, Kyneton Vic 3444

[www.thealbionkyneton.com.au](http://www.thealbionkyneton.com.au)

# ART SHOW

## 4th Redesdale Art Show

showing at the Redesdale Hall  
hosted by Redesdale Hall Committee.



Celebrated Artist  
**Chriss Canning**  
will be officially opening the show

[www.crisscanning.com.au](http://www.crisscanning.com.au)

Opening Night  
Friday 28th October at 6pm  
Entry Fee \$10



Finger food & a glass of wine Includ.  
Further drinks for sale.

The Exhibition continues on  
**Saturday 29th & Sunday 30th**  
from 10am to 4pm

Works include paintings etchings and  
ceramics by exceptional local artists.

Visit: [www.redesdale.net](http://www.redesdale.net)

## Hall Happenings at the Redesdale Hall



Our Redesdale art show and Festival planning is progressing well. We have our advertising flyers around town, and community members are distributing them far and wide. It should be a great weekend, - mark it in your diary - October 28th, 29th, and 30th.

On Friday 28th October from 6pm, the new book about Redesdale will be launched by Ken James at the Festival opening @ the Redesdale Hall.

Copies will be available.

There will also be copies of A history of the Redesdale Railway Line 1891- 1954

This is a great chance to own a little bit of our history.

## General Repairs, Maintenance

Tiling, Carpentry



**Home & Garden  
Maintenance Services**

Robert Schomacker 0407 823 900

Painting, Gardening

## CHURCH SERVICES

### UNITING CHURCH

Barfold: 1st Sunday of each month  
Metcalfe: 2nd Sunday of each month  
Mia Mia: 3rd Sunday of each month  
Sutton Grange: 4th Sunday of each month

Morning tea is served at each of these Uniting Churches at 10.45 am and services start at 11 am and finish at midday. If there is a 5th Sunday in the month, services may be found at Kyneton.

### CATHOLIC CHURCH

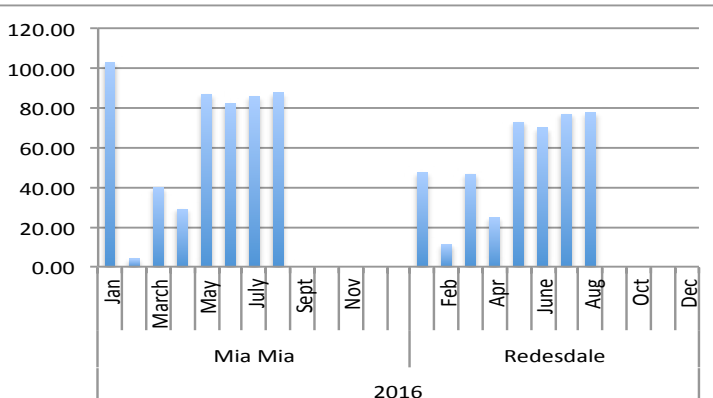
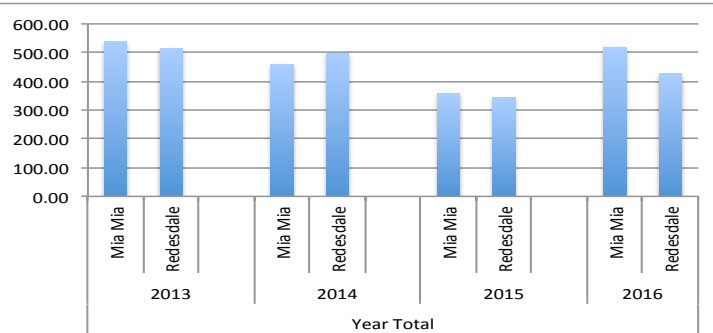
Redesdale: 2nd Sunday of each month 11 am



## RAINFALL

The average yearly rainfall for Redesdale is about 601mms.

Thank you to Mary Bennett for the Mia Mia readings.







## Your Health!

with  
**Dr Tim**

Caffeine - just what the world economy needs -right?

Caffeine has been the drug of choice for many cultures over hundreds or even thousands of years. In fact caffeine is produced by quite a number of plants native to Asia and Central and South America. Western Europeans took to coffee and tea in a big way 300 or so years ago, but thousands of years after the native Americans and Chinese.

Of course it is the stimulant effects of caffeine that have made it so popular around the world. What exactly does it do? Its main action is to inhibit adenosine receptors, which in turn act to inhibit

nerve function. The inhibition of the inhibition results in the wakefulness effects of caffeine. However it has multiple other effects through the body as well - hence the "side effects" of caffeine.

So your first cup of coffee for the morning will typically cause a mild rise in blood pressure and heart rate as well as increased alertfulness. As you continue to drink coffee through the day it can start to have other effects, inducing anxiousness and tremor, increased urine output and bladder stimulation. If you could drink 50 to 100 cups of coffee in a day then you might end up with a lethal dose, a tremoring, anxious, dehydrated insomniac - a very unrestful and unpleasant demise. As always - moderation is the key!

So what are the other considerations when dosing up on skinny Aquiares Grand Estate SHB Single Origin latte or Lap-sang Souchong tea?

Caffeine seems to have some protective effect against a range of conditions including Parkinson's disease, some types of cancer, and cardiovascular disease. For bronchopulmonary dysplasia and apnoea associated with prematurity in infants it is the medica

tion of choice. It needs to be treated

with caution however in pregnancy with some studies showing increased miscarriage in those drinking caffeine in excess.

Another trap for regular consumers is the old curse of tolerance and withdrawal. Drink too much, and you will find you are asking for double or triple shots to get you going in the mornings. If you decide to get off that habit, then you are in for a range of withdrawal effects, including headaches irritability and tiredness - better to sort that issue out slowly!

As the world's most commonly used psychoactive drug, consumed by billions around the world every day, I'd venture to say it's what makes the world go round - but overstimulation is the risk!

Dr Tim Stobie 54221397



## Media Release

### PETER WALSH MP

Leader of The Nationals  
Deputy Leader of the Coalition  
Shadow Minister for Agriculture  
Shadow Minister for Water  
State Member for Murray Plains



Wednesday 31 August 2016

Mandatory tagging cuts Victorian industry off from nation

Agriculture Minister Jaala Pulford has refused to explain why she has isolated Victorian sheep farmers from the rest of the industry by introducing mandatory electronic identification (eID).

The refusal came when The Nationals asked Ms Pulford in Parliament yesterday why she had back-flipped on the Government's pre-election promise not to introduce eID unless it was part of a national scheme.

As announced by the Andrews Government last week, all sheep and goats born in Victoria from January 1, 2017 will be required to be electronically tagged. Labor committed to making the implementation 'cost neutral' for the first year only.

"Just two years later the Andrews Labor Government has announced a move unique to Victoria, with barely one month of consultation with stakeholders and less than four months for farmers to prepare," Shadow Agriculture Minister Peter Walsh said.

"It came as a surprise not only to farmers, but also to the minister's interstate ministerial counterparts.

"Jaala Pulford's announcement on mandatory eID for livestock is

another broken promise from the Andrews Labor Government."

Mr Walsh said the decision raises concerns of the minister's lack of understanding of the sheep trade between New South Wales, South Australia and Victoria.

"That confusion and cost will now be forced onto the industry," Mr Walsh said.

"There needs to be improvements in traceability, but it should be done as part of a co-ordinated program – the industry can't afford to end up with different systems in different states."

The Government has committed to a subsidised cost for the first year of the program only.

"There must be robust government support for this program for the full implementation – not just the first year," Mr Walsh said.

"We are concerned although there is going to be industry consultation, there is a distinct lack of detail around how it will be implemented considering that will happen on January 1, 2017."

Media contact: Emma Manser 0437 225 386 [emma.manser@opposition.vic.gov.au](mailto:emma.manser@opposition.vic.gov.au)

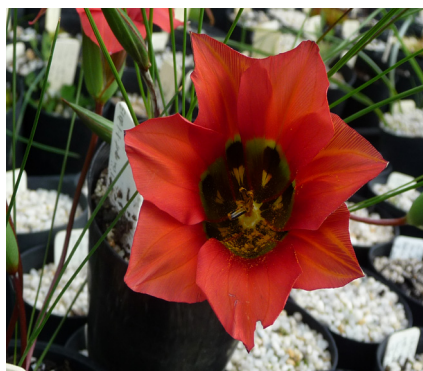
# The Bridge: Redesdale Ramblings:

## Romulea – Onion Weed or Star - Grass?

Romulea is a genus of cormous plants from Southern Africa and the Mediterranean. The one most people see is the little purple starry flower in the grass during winter and spring – *Romulea rosea* – often called “onion grass” and attractive to cockatoos which dig up and eat the starchy corms. Unfortunately it is a major pest in our gardens and pastures and no one in their right mind apart from a botanist would grow it deliberately. But even worse is *Romulea minutaeflora* which has tiny pale mauve flowers which aren’t much to look at.

Luckily for us there are a number of other very beautiful species of *Romulea* which are worth growing and are not difficult in our conditions. The flower colour ranges from white and cream through to bright yellow, orange, red, pink and purple while the shape is generally starry with 6 petals.

My favourite is *Romulea sabulosa* which sports huge red flowers almost the size of a small tulip.



Above *Romulea Sabulosa*

# GARDEN PATCH

This is one of the species which should never become a pest in our gardens as it needs a lot of water to do well. It’s best grown in a pot in a saucer or tray of water while in growth and then dried out for the summer (just put the pot under cover once the leaves go yellow). It has the same thin rush-like leaves as *Romulea rosea*, but other species have more distinct foliage.

*Romulea hirta* and *Romulea tetragona* have leaves which are ridged so that they appear to be like an “x” in cross-section. Both of these are very easy from seed so keep an eye on them!



The seed-pods should be cut off before they shed or else put a fine-mesh bag over them if you want to collect them. *R. hirta* is a pale yellow with a darker central zone, while *R. tetragona* is a bright “candy” pink sitting low to the ground. Their different foliage actually should mean that we could grow them in the garden without mistaking them for the weedy species – it’s usually too tempting to pull out those long leaves without realising that they could be something else! I’m sure we’ve weeded out some of the more desirable species by mistake so

now we keep them in pots.

For a little while we grew a beautiful little one called *Romulea hantamensis* which has purple flowers with darker marks on the petals. Though it set seeds we never got them to germinate and the existing corms gradually diminished and died out.

*Romulea flava* has white through to pale yellow flowers which are quite attractive but there are some rich yellow species like *Romulea tortuosa* which can be quite bright on a sunny day – which is of course one of the drawbacks of this genus: the flowers only open in sunshine. However they are related to crocus and I don’t know anyone who won’t grow them because they have the same tendency to stay closed when the sun isn’t shining.

Cheers

Fermi de Sousa, the Redesdale Rock-Gardener.



Above *Romulea flava*





# The Bridge: GARDEN PATCH



Hello Dear Readers,

Lady Bombay here. The rising floods of water which we haven't seen for the past five years has come as a mixed blessing. Dams overflowing, precipitous waterfalls that I've never seen before, or I don't think I have. Squelch, squelch we go through the garden.

Even the road to Mia Mia Manor was flooded. Now this would not necessarily concern moi, however things became critical after two solid days of rain. The gin was ne plus. No, I did not drink the house dry. Lord Bombay forgot to stock up.

As there was only propagation to do in the hothouse, and with a serious case of cabin fever, and the road still flooded, I clad myself in Burberry and wellies and ventured forth to Thorn, the gardener's, cottage door. I explained the situation of the gin drought and the requirement of venturing out for house provisions. Now I know the cardinal rule not to drive across a flooded road. Therefore, I was sensible and asked Thorn with his Mae West (life jacket for the younger readers) to wade through the water as I sat in the Bentley behind him. All was well as the depth of the water was 10 inches high.

Our Spring of 2016 should be an absolute bumper growth season. The ash trees and the roses have the most prolific growth that I have seen for many a year. However, as there is such an abundance of water lying around, there is little to write about for this issue.

Readers, its time for Mothers ruin after a soggy day.

Too aloo ,

## Bombay and a Bex

*Send in your questions for Lady Bombay Sapphire to  
bridgeconnection.editor@gmail.com*

Dear Lady Bombay,  
Could you give me some ideas as to what I should feed my plants to make them grow as fast as the weeds?  
Signed,  
The Novice Gardener.

Dear Novice,  
Is the name french?  
Dynamic lifter is best for new plantings. Granted, it does give the nostrils a sequential spasm, however beneficial.  
Not keen on the odour situation? Try liquid fertilisers such as Seasol or Charlie Carp. Use them like a Vermouth Martini dear, just add water and shake, shake, shake.  
Lady B

Bombay and a Bex

Dear Lady B,

I have just moved into the area from Melbourne. I have very little garden and no shade. I am worried about my potted azaleas. Where would be the best spot to put them?

Signed ,

“Concerned”

Sutton Grange

Dear Concerned,

Whilst the current weather situation is mild and wet. Don't be fooled, as once the warmer weather comes upon us, the delicates of European introduction tend to require a bit of extra care. I suggest that you build a shade house, preferably on the east side of your house or out-building. As it is your first summer here, be warned, plants do burn.

Now remember to use sunscreen, dear. On you, of course, not the azaleas.

Lady B

According to American folklore, if a dog is seen to eat grass it will almost certainly rain by nightfall.



# The 14th Castlemaine & District Festival of Gardens 2016



**2016 IS THE 14TH BIENNIAL** Castlemaine and District Festival of Gardens.

Our Silver Jubilee — our 25th year.

In that time the Festival has presented hundreds of gardens, open to the public over Cup Week every two years.

Alongside classic gold-fields' gardens are country cottage gardens, gardens in new estates, heritage and community gardens.

**JOIN US IN CUP WEEK 2016** and enjoy the beauty of nature's bounty, as nurtured by our gardeners.

**Melbourne Cup Week 29 Oct-6 Nov**

For further information contact the Festival of Gardens

at email: [castlemainefestivalofgardens@gmail.com](mailto:castlemainefestivalofgardens@gmail.com) or web: [www.festivalofgardens.org](http://www.festivalofgardens.org)

Supported by: Mount Alexander Shire | ASQ Garden & Landscape Supplies | Castlemaine Property Group



## 2016 Castlemaine & District Festival of Gardens 25 Year Celebration

Spring is in the air and there is no better way to enjoy the wonders of nature than visiting the beautiful gardens of Castlemaine and its surrounding districts.

This year Castlemaine celebrates its 25th year of Gardens Festivals. The Festival opens on 29 October and is open each day through to 6 November (Melbourne Cup week). It's the best bet of the week featuring a glamorous field of spectacular town and country gardens.

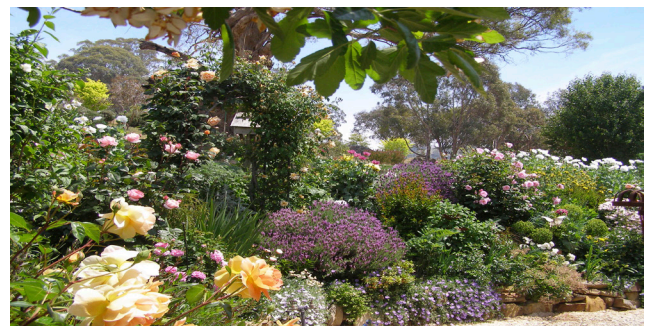
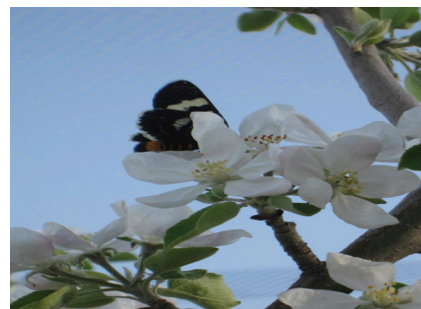
There are 20 gardens on display giving you the choice of exquisite town gardens around Castlemaine or the spectacular large country gardens of Barkers Creek, Harcourt, Newstead, Sutton Grange and Taradale. Many of the gardens have plants for sale with some offering morning and afternoon tea. All provide a peaceful surrounding to just meander and relax.

Most gardens are open between 10am and 5pm but not all are open each day. Brochures picturing each garden, their locations and opening times are available from the end of August.

To find out more about the Festival and to order a copy of the brochure visit [www.festivalofgardens.org](http://www.festivalofgardens.org), drop into the Castlemaine, Bendigo, Maldon Information Centres, ASQ outlets or phone 54722838.

Group Tours can be arranged through the website or phoning direct.

For further information contact Mr. Terry Moloney 54722838





# Redesdale Recreational Reserve Committee Inc

## Chairman's Monthly Report

### October-2016

Hi Redesdalian's

It only seems like yesterday that we were celebrating the festive season but here we are nearly into October. I must say after all the rain we have had the reserve is looking a picture as we move through spring, the planting carried out by our landscape director is starting to flower and looks fabulous, well done Gary.

The CFA are holding a field day in conjunction with State-wide Irrigation at the reserve on Sunday 23rd Oct for community members to bring their fire fighting equipment along to be checked ready for what looks like a bumper fire season after all the rain. The reserve committee will have a BBQ to raise funds for the pavilion project.

The following weekend the Redesdale Festival will be upon us, the way the handcrafted market is shaping indicates we are in for a spectacular weekend of festivities with the Art Show opening on the Friday night, art show, photographic show, market, open studios and garden on Saturday together with the Battle of the Bridge cricket match, art show, photographic show and open studio on the Sunday.

The pavilion is progressing well, the CoGB have agreed to do some grading work on the road behind the pavilion to alleviate the drainage problem before we commence work for the slab, this should be completed by the end of the month,

hopefully if the rain stops.

Due to our Treasurer's illness, Simon has been forced to resign the position. At our last meeting the committee unanimously nominated Gary Prendergast to the position which Gary accepted. My fellow committee members need to be commended on their commitment in making things happen. I am amazed at the progress in such a short time and how willing they are to put their hands up. It just goes to show what can be achieved when you have such a committed group.

This is all for this month, but remember, with all that will be going on, the place to be seen is at the Redesdale Recreation Reserve.

Les Pocock.

Redesdale Recreational Reserve Committee Inc

**Below's picture (the start of the rock wall in the Reserve Thanks to Ron Taylor)**



## Fire Equipment and Prevention Field Day.

This will be the last article in the Bridge Connection before our Field Day on Sunday October the twenty third.

True to form, Dorothy McKellar's poem is once again playing out before our eyes, with the dry of the last season a distant memory, and now, so far for September I've recorded 125mm of rain or 5 inches in the old money. A prolific Spring pasture flush is assured. It won't be long before the various authorities begin there pre fire season warning campaign, with a focus this year on the above average spring growth, particularly across the local grass lands on the northern slopes of the divide, and the inherent dangers that they will present when they are fully cured in mid to late summer.

The field day that the Redesdale Fire Brigade will be hosting on October the twenty third will be a timely event prior to the fire season. We aim to bring to the attention of land and property owners the options and requirements that are available to them for land and asset protection this fire season.

We are inviting owners of firefighting equipment to bring it along to the Agnes Mudford Reserve at Redesdale and share information with those people who are looking to acquire such equipment. There will be opportunities to demonstrate to those interested the capabilities and limitations of your equipment.

State Wide Irrigation will be there show casing new products available on the market both for firefighting and fire prevention. Lawn mowers, wiper snippers chain saws as well as pumps tanks and hoses.

Also Terry Hactor from Sandhurst Fire Extinguishers will be on site talking about the different fire extinguishers required in and outside the home. Terry will have fire extinguishers for sale.

We will have brochures available from the CFA with regards to the operation of private appliances at fires. As well as information on safe guarding your home from fire. We hope to have a representative from the CFA to answer your questions as well as the CFA's "Little Fire Truck" for the children to play on.

The Redesdale Fire Brigade will also be show casing their equipment and will be on site to field any questions about fire prevention. They are also always keen to sign up new recruits so if you're at all interested in joining as a volunteer then come along on the twenty third of October and talk to one of the members from the Redesdale Fire Brigade.

In summary the day is really about sharing information with one another in the community prior the fire season commencing. So I'd really like to encourage you to come along, particularly if you own appliances that you could demonstrate to others who may be interested in purchasing.

Please refer to the flyer in this edition of the Bridge Connection for further details of this event.

Further Information please contact:

Tom James,  
tom@colibanestate.com  
Mob: 0419588383  
Or.

Andrew Campbell,  
windomal@bigpond.com  
Mob: 0418253104



## RECIPE OF THE MONTH 16

### Never Fail Chocolate Cake

**3 tablespoons butter (melted)**

**1 cup self raising flour**

**3/4 cup of milk**

**1/2-teaspoon vanilla**

**1-tablespoon cocoa**

**1-cup sugar**

**2 eggs**

**Combine all ingredients and mix  
with electric beaters till smooth.**

**Bake @ 180 for 45 mins**

**When cool top with favourite icing**



**Enjoy** *life today,*  
*Yesterday*  
**& is gone**  
**Tomorrow**  
*may never come.*

## Letters to the Editors

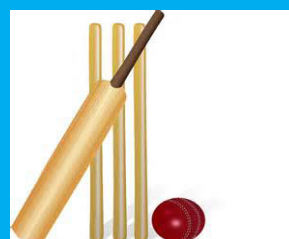
Dear Editor,  
Liberal and Nationals MPs successfully instigated an inquiry into the price of regional fuels last week in State Parliament.  
Country people dig deep every time they fuel up at the bowser, more so than their metropolitan counterparts and even other nearby towns.  
Anecdotaly, transport costs, price cycles and demand are the driving force of petrol pricing.  
But, for the most part, the methodology is as mystifying as Daniel Andrews' ongoing war against CFA volunteers. This new inquiry will seek to lift the lid on fuel prices. It will compare the price of unleaded, diesel and LPG fuels in regional communities with metropolitan areas and other regional communities. It will also look at the impacts on country families, businesses and industry.  
Unlike other fuel price investigations, the spotlight will be on regional Victorian communities and what can be done to relieve the pressure high fuel prices add to the cost-of-living.  
To ensure success, we need your input.  
Public submissions will be sought in the near future – this is a chance for every country Victorian to have their say. Regional Liberal-Nationals MPs have listened to the concerns of their communities and it is time we shed light on the secrets behind fuel pricing.  
Peter Walsh  
Leader of The Nationals Member for Murray Plains

## Battle of the Bridge Cricket match

Sunday 30th October  
@ 11am

Lunch 1pm

food and drinks available for sale  
more info  
call 0418130206





## MGs MGs MGs!

On Saturday 17th September 59 vintage to modern MG cars arrived at the Redesdale Hall for a pit stop.

The Redesdale Fire Brigade had been asked to cater for a picnic style lunch.

The hall was resplendent with white tablecloths, and the 118 MG enthusiasts has a beautiful lunch of freshly prepared and beautifully presented gourmet sandwiches, homemade slices, and fruit platters.

The MG spring rally had a trivia theme where the drivers and navigators had to find different land-markings and record that they have seen them on the trivia map.

From Redesdale the rally was heading for Bendigo via Heathcote with a planned night stop over and BBQ near Lake Weroona

The MG Club were very appreciative of the feast provided and members received numerous thanks and congratulations on the organisation of entire exercise.

Thank you to all the Redesdale Rural Fire Brigade volunteers who helped to set up the hall, prepared and packages sandwiches and slices and managed the 'pit stop' parking . The fundraiser included a raffle and was deemed success by all involved.

Lindsay Booker  
Redesdale Fire Brigade



Above: Jason Sundblom with Tyler left and Reegan Right.

Below: Fantastic lunch enjoyed by the MG Club



## Best prepared property competition

### Redesdale CFA

If either you, or someone you know, have a property well prepared for the upcoming fire season then you can now nominate for the annual fire prevention competition. There are great prizes on offer and the winner will be announced at the CFA Field Day.

Nominations can be made by contacting Andrew Campbell on 0428253104 .



## Fire Fighting and Prevention Equipment Field Day

**Where:** The Agnes Mudford Reserve

**When:** Sunday, October 23rd @ 9.30 am

**Why:** A preseason check of privately owned fire fighting equipment. Information exchange and demonstrations of available equipment.

Whether you own firefighting equipment or may be in the market to purchase. Come along to this field day and exchange information with others. Bring along appliances that you own and ensure that it is in working order for the up coming season. State-wide Irrigation will be on site with new equipment for sale and demonstration.

Enquiries:

Andrew Campbell [windomal@bigpond.com](mailto:windomal@bigpond.com)

Mob: 0428253104.

Tom James [tom@colibanestate.com](mailto:tom@colibanestate.com)

Mob: 0419588383.



## MALMSBURY VILLAGE FAYRE 2016

The 2016 Malmsbury Village Fayre is just around the corner and is a highlight of the calendar in central Victoria. This year's fayre will be held on Sunday, November 20th between 10am and 4pm in the Malmsbury Botanic Gardens and Town Hall. Visitors can expect many old favourites and new surprises. Entry is by gold coin donation, which supports a number of local Malmsbury organisations including the CFA and primary school.

Once again live music will be a strong feature of the day with loads of opportunities to make merry while listening and dancing.

Local wineries such as Barfold Estate, Birthday Villa, Coliban Valley, Lord Malmsbury, Tarrangower Estate and Zig Zag will be there to offer tastings and sales. Food vendors, along with local produce stalls, will tantalise your tastebuds with treats to sit and enjoy in the gardens or to take home.

Last year a makers' craft market was included in the Fayre for the first time. This year it will be expanded around the perimeter of the gardens lake to better utilise these glorious surrounds. Entertainment will abound throughout the day and include games of bowls and croquet offered by the Malmsbury Historical Society on the original green located in the gardens.

Children will be well catered for with face painting, a jumping castle and plaster painting activities.

A raffle, with attractive prizes donated by local businesses will be drawn by the conclusion of the day and there will be several lucky winners.

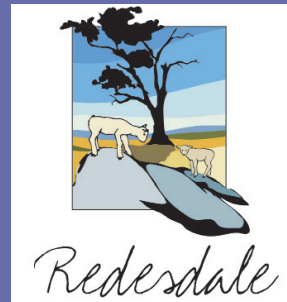
There is always plenty of parking or you may consider coming by V-Line train. It is just a short walk from the station to the Fayre.

Also whilst in Malmsbury have a browse in our local businesses in the nearby shopping strip and vicinity.

We thank our many generous supporters who are all listed on the website [www.malmsburyvillagefayre.org.au](http://www.malmsburyvillagefayre.org.au)

For further information contact: Helen – 0417 312 098 or Bev – 0429351993

or Laura (Bookings for Malmsbury Makers' stalls) – 0411 899 252



**IT'S TIME TO RENEW YOUR REDESDALE AND DISTRICT ASSOCIATION MEMBERSHIP OR TO JOIN UP FOR THE FIRST TIME**

**Membership applications can be downloaded from the Redesdale website: [www.redesdale.net](http://www.redesdale.net)**

## MAJOR MITCHELL EXPEDITION

through the Castlemaine area

**180 Years ago: 1836 - 2016**

**Journeying through Dja Dja Wurrung Country,  
or "Australia Felix"**

Friday, 30th September:

11 am - 1 pm: Forest Creek walk - retracing Mitchell's steps with references to his Journal and maps. Meet at Happy Valley Rd, corner of Verlin St, Castlemaine.

2.5 km walk. BYO drinks. Gold coin donation.

Saturday, 1st October:

1pm - 6 pm: Exhibition of paintings by Eliza Tree. Launch at 4 pm.

Billy Tea & bubbles. Gold coin donation. 137 Mostyn Street, Castlemaine.

Sunday, 2nd October:

10am - 4 pm: Retracing Major Mitchell's 1836 Expedition from Newstead to Redesdale, and revisiting descriptions from his Journals and maps. Meet at the Rotunda, Pyrenees Hwy, Newstead.

To book seat on bus ph: 0413 191 227 or Carpool.

BYO lunch and drinks. Cost \$20.00, \$15.00 concession.

Further details: [www.majormitchellexpedition.com](http://www.majormitchellexpedition.com)

This Event is not to celebrate, but to recognise Mitchell's journey and the avalanche of events which were to follow.





# Recreational Reserve Committee

## A Day On The Green Open Garden

On behalf of the Redesdale Recreational Reserve Committee Inc. and my wife Pan, I would like to thank all those that attended our Open Garden on 28<sup>th</sup> August 2016 and helping in raising of funds for our Pavilion Project.

The weather on the day was befitting of a perfect spring day, sun was shining and the birds were singing.

The Garden was in full spring bloom with daffodils aplenty shining like little yellow beacons amongst the greenery of the Bella Donna plants (which flower first week of Feb). Many other bulbs were out in flower; Grape Hyacinth, Jonquils, Freesias, Cyclamens, Autumn Snowflake, little Split Cupped Daffodils

Also in full bloom were Kangaroo Paws, Blossom Trees, Hellebores, Red Hot Pokers with plenty of succulents and an array of Cacti.

Extensive weeding and then mulching of most garden beds in the preceding weeks, months now means that a quick walk around is all that is required to maintain our garden weed free.

The expansive lawn areas were also looking as green as they could, thanks to some decent rainfall this year.

The 1000m<sup>2</sup> putting green planted in "Penncross Bentgrass" also added to the general wellbeing feel of the day with several people enjoying a putt around the 9 hole course.

**Below: Amazing cakes provided by friends**



The highlight of the day was surely the impressive array of cakes laid out on the veranda which could be enjoyed with a cup of tea or coffee whilst gazing over the view of the Campaspe River. Thanks to Pan and her Catering Gurus, Andrea Ford and Jane Henderson and all the other cake donators/helpers for making the day a pleasurable one. Also many thanks to the RRRC Committee members and their partners for providing their services as well.

I am sure all those who attended enjoyed a pleasant wander around the garden and veggie patch

Thanks again

Gary Prendergast



**Above: The putting green**





## How good is our pub?!

On Saturday 10<sup>th</sup> Sept all the lights went out in Redesdale. The pub was full and the meals had been ordered. Completely undaunted, and with the aid of candles and a gas cooker, Garth and Beth managed to fill all the orders in great time while the patrons sipped and chatted in the romantic light of a myriad candles. It was a spectacularly good effort.

The pub has now been open for a year and has put the heart back into our little community. Congratulations to everyone involved with the Redesdale Hotel.



After a year of The Redesdale Hotel re opening. A few members of the community have gotten together and are starting the Redesdale Hotel Social Club.

Memberships are \$30 per year, and you will receive your own social club stubby holder

Other benefits of becoming a member:

- Friday Night Social Night, including raffles and other members benefits
- Organised events including golf days, Wine/Cider/Beer tour, AFL games, Darts Comps, regular 'Sunday Sips' and much more.

If you are interested in joining please pop into the Pub for a membership form

 **The Redesdale Hotel**

  
**Classic Country Pub Dining**

**For bookings**  
**(03) 4405 0601**



Monday - Closed  
Tuesday - 4pm to 8pm  
Wed to Sun • Lunch 12noon - 2.30pm  
• Dinner 6pm - 8.30pm

  
redesdalehotel

  
The Redesdale Hotel

**The Redesdale Hotel**  
2640 Heathcote-kyneton Road  
Redesdale, Vic, 3444  
info@theredesdalehotel.com.au

**www.theredesdalehotel.com.au**



# Redesdale and District Association

## Annual report

On Sept 8<sup>th</sup> at the Redesdale Hall, the Redesdale and District Association (the Association) held its Fourth Annual General Meeting.

Jo-Smith Sargent as president of the Association chaired the meeting and welcomed members and visitors to the fourth AGM of the Redesdale and District Association (the Association). A special welcome went to Cr Helen Leach (CoGB) and Yvonne Wigglesworth who is standing for council in the next election. She pointed out the attendance register, membership application forms and the membership officer.

Given that most attendees had a serious interest in the fact that the Bulldogs were playing the West Coast Eagles that night, it was decided to run the meeting as speedily and efficiently as possible!

Jo started by reminding us the Association was formed initially to develop the Community Plan in cooperation with the Community. The Community Plan was finalised in 2013. Many of the goals in the Community Plan have been accomplished but there are still many to complete. The old saying "Rome wasn't built in a day!!" comes to mind or a better one maybe is "All good things come to those who wait".

Jo continued;

"Back in November last year we held the Redesdale Rocks Festival. The weather was dreadful, and numbers were down but we still managed to make a profit of \$3020.

This year we hope to have an even better result. The Redesdale Festival takes place on the Melbourne Cup Weekend, which this year is from October 28<sup>th</sup> to 30<sup>th</sup>, and at the same time the Hall Committee will be holding their 4<sup>th</sup> Art Show. There will also be a Photographic Exhibition, Open studios, Craft Market and Cricket Match. Fingers crossed for great weather!

The Association has secured two grants through the City of Greater Bendigo to support this event. One was for \$2000, to aid with the advertising for the Redesdale Festival and the other was for \$2250 to purchase a marquee to use at the event. A third grant for \$250 was received from the Heathcote Community Bank for the photographic Competition prize. Well done to Gloria Pocock for applying for these. I know how long the applications take and it is no mean feat to be successful with three applications!

Over the past year the Association donated \$1500 to the School Library Fund, paid for the school swimming for the second year running, and contributed financially to the Bridge Connection and the Pavilion Fund! We have also invested in some assets (chairs, tables and a great Roaster), which have been hired out to the various community groups and individuals and are now paying for themselves. We are also involved with the 150 year Bridge Commemorative Quilt project. So you can see where the money raised goes to; back into our community!

At the end of last year's AGM we expressed that our primary focus for the following year would be to continue to work closely with the City of Great Bendigo. This has and is still happening. A Key Communicators Group was formed by the City of Greater Bendigo. This includes a person from the Redesdale and District Association, the Hall Committee, the Redesdale Recreation Reserve Committee, the CFA, the farming sector and the general community.

You may remember last year a Feasibility Study was conducted and funded by the City of Greater Bendigo. This Feasibility Study showed that we needed a Business Plan, hence the stage that we are up to now. The Council has recently appointed a Bendigo-based Business Consultant Company called "Street Ryan" to produce a business plan for the development of the Redesdale Precinct. If all goes to plan and we are successful in the Business Plan we will be able to complete more of the Community Plan goals."

The Minutes of the previous AGM were distributed, read and accepted as correct. There were no matters arising.

Ruth Booker presented the annual financial statement. The opening cash balance for the previous year was \$6,311 and the closing balance for this year is \$14,142 made up from \$10,902 in the general account, \$2,831 in the Festival account and \$409 in the Quilt account. It must be borne in mind, that this includes grant money that will be used at the festival and that the festival this year will be fundraising for the Hall and the Reserve, and not for the Association.

After the Treasurer's report, Jo announced that all committee positions were vacant. She handed over to Chris Gillies to run the election process. Jo stated that Chris is a valued member of the community who works full time in Melbourne and still manages to run a successful winery and 'bed and breakfast' here in Redesdale. "Running board meetings is second nature to Chris, so I would like to thank her in advance for taking on this additional task."

On taking the chair, Chris thanked all the exiting committee members of the Redesdale and District Association. She acknowledged the hard work and goals achieved in implementing parts of the Community Plan, cementing community relationships, writing grant applications and organising events. She reminded attendees that only those who are paid-up members of the Association are entitled to vote. She noted that this year Ronn Taylor had resigned from the committee due to increasing commitments with the Reserve Committee and with family matters in Melbourne. Les Pocock had informed the committee that he would not be standing as he is Chair of the Reserve Committee and has a great deal to do in that position this year. An application to join the committee was received from Viv Ellis, a new permanent resident (with husband Neil) of Mia Mia. She declared all positions vacant and the voting procedure commenced. The results were as follows:

President; Jo Smith-Sargent,

Vice President; Gloria Pocock

Secretary; Kath Hall

Treasurer; Ruth Booker

Assistant Treasurer and Bridge Connection Rep.; Regina Bennett

Membership Officer; Jill James

Web Manager; Kylie Munro

School Rep.; Jo Smith Sargent

CFA Rep.; Don White

Reserve Committee Rep. and Asset Manager; Rod Gibson

Hall Committee Rep.; Yvonne McGrath

Ordinary Member; Michelle King

Ordinary Member; Viv Ellis

Vivian Ellis, has been welcomed as a new member. The Association was grateful for her application as she is already involved with the Quilt Project and is committed to the local community. She was welcomed aboard.

Chris thanked exiting members and office-bearers and welcomed new committee members and those now holding office. She then handed back to Jo Smith-Sargent to conclude the meeting.

As there was no 'General Business', Jo concluded the meeting by outlining future plans. She

spoke of the exciting year ahead where the Association will continue to act as a central point of contact, maintain the website and organise events to bring interest, participation and funds into the community. The meeting concluded at 7.50 pm

Redesdale and District Association

Secretary; Kath Hall

# Sustainable House Day

## Clearwind, Glenhope

By John Stuwe

On the 11<sup>th</sup> September, Clare Claydon and Win Westerhoff kindly opened their house and garden for people interested in renewable technologies and sustainability. Sustainable House Day is sponsored by the Alternative Technology Association, which also publishes relevant material and provides advice on a variety of sustainable technologies, such as solar, wind, microhydro, insulation, appliances, building and refitting.

Clare and Win have gradually built up the house, shed and garden to fit their lifestyle and their principles, as could be seen in the following features:

### Double Glazing

Recently retrofitted, this has resulted in a huge increase in home insulation.

### Dry Composting Toilet

The lack of any odour due to the ventilation (fan assisted; in through the seat area and out through the external “pong pipe”) was remarkable. The present model has an internal pan which needs emptying occasionally, but Win would like to install a fancier model which is emptied less often, from outside and underneath the house. Old-fashioned septic tanks (even with fancy sand filters and many metres of aggie pipe) tend to kill off any native vegetation affected by the runoff.

### Flooring

The beautiful floorboards were milled from trees on the block (Red Box, Grey Box and Peppermint).

### Garden

Clare and Win have created a native garden utilizing local trees and shrubs. A local form of *Grevillea rosmarinifolia* was noteworthy. Local forms are threatened by interbreeding with the cultivated varieties which were extremely popular during the 70's/80's.

They also have a very healthy-looking, extensive veggie garden, the products of which are dried (in a solar oven) or preserved. There are also bees and chooks.

### Seed Collection

Win and Clare collect indigenous seed from the area to grow themselves and also supply to local indigenous plant growers, such as A&B Trees, Heathcote.

## Orchard

There is a large and diverse orchard, with many trees multi-grafted. It is very interesting that peaches, nectarines etc can be grafted onto plum rootstock. Plums grow so well in the area.

Katie and Hugh Finlay from Mt Alexander Fruit-Gardens ([www.mafg.com.au](http://www.mafg.com.au)) gave a wonderful, very informative talk on growing fruit trees. They gave tips on pruning and watering. Watering of the orchard at Clearwind is helped by the grey-water pipes.

## Pisé or Rammed Earth - Shed

Ben (Clare and Win's son) gave another fabulous talk about their experience building the rammed-earth shed. I was amazed how solid and concrete-like the rammed earth was. The materials were mixed using a tractor although Ben said he would use a bob-cat next time.

## Alternative Technology Association

Being introduced to the ATA was extremely informative ([www.ata.org.au](http://www.ata.org.au)). They seem like a wonderful, sincere organization with a lot to offer. They publish two periodical magazines (Sanctuary and Renew) and had copies of the “Bible” of alternative technologies (possibly an Australian Government or joint publication). A very worthwhile organization to be introduced to.

All up, it was a very informative and most pleasant, wonderful day which left Suzy and me exhilarated and enthused.





**KEEN TO  
CUT  
YOUR  
HOT WATER  
BILLS  
BY 75%  
???**



Solar Power Solar Hot Water  
Heat Pump Hot Water  
On Grid & Off Grid  
Domestic & Commercial

energysolutions@breaze.org.au

**03 4309 4027**

Bellow is the beautiful Perricoota Vines Retreat prize for the best The Bridge Abroad. Prize is 2 nights stay at the beautiful Perricoota Vines Retreat Prize drawn By Bendigo Cruise & Travel an presented @ Festival opening on Friday 28th Oct from 6pm @ the Redesdale Hall.

## The Bridge Abroad

proudly sponsored by Bendigo Travel and Cruise  
**5441 8811**

**Bendigo**  
Travel & Cruise Centre

### A prize at the end of next year!

Bendigo Travel and Cruise have sponsored this regular section. Next time you go away (Australia or overseas) send us a pic of you or a friend holding a copy of the Bridge Connection and we will enter it for a prize weekend away at the end of this year.



Heather Carmody  
Trollstigen, near Andal-  
snes, Norway



*Unique, beautiful, peaceful...*

Give some *luxury* this  
Christmas...

#### Perricoota Vines Retreat & The Vines Lakehouse

Luxury spa accommodation

Lakeside or Garden Spa fully self contained villas

• Weddings • Ceremonies • Receptions

Conferences & Functions



perricootavines  
retreat

400 Perricoota Road, Moama  
P. (03) 5482 6655

E. enquiries@perricootavines.com  
W. www.perricootavines.com

## CAMBIA HAIR STUDIO

Louis Soncin  
0411 411 407

*By Appointment only*

66a Piper Street, Kyneton Vic 3444



## Come and try our coffee at the **RURAL CAFÉ**



In the centre  
of Redesdale

*Now serving Norma's  
famous apple pie!*

Open 8am to 5pm

*A great place to stop for all day breakfast, lunch, excellent coffee  
and fresh cakes.*

Phone: **03 5425 3271**

# BRIDGE CONNECTION COMMUNITY NEWSPAPER

## Advertising Rates/Sizes

Size	Height x Width	Price per issue	12 Editions
Business Card	55mm x 90mm	\$25	\$250
Quarter Page	130mm x 90mm	\$50	\$500
Half Page	130mm x 190mm	\$95	\$950
Full Page	270mm x 190mm	\$175	\$1,750

**Colour Advertisements plus 20%.**

Please send editorial or advertising copy to:

**bridgeconnection.editor@gmail.com**

or by post to **866 Coliban Park Road, Redesdale, Vic 3444.**

For other editorial enquiries, please phone **0407 116 899**

### Bridge Connection Distribution

800 Copies printed and distributed to Redesdale Mia Mia Region, including Barfold, Baynton, Derrinal, Elphinstone, Glenhope, Kyneton, Langley, Metcalf, Sidonia and Sutton Grange

**Disclaimer:** The Bridge Connection Inc. Committee wishes to advise that the views or remarks expressed in this publication are not necessarily the views of the volunteer Bridge Connection Inc. editorial or production team and no service or endorsement is implied by the listing of Advertisers, sponsors or contributors. Although every effort is taken in reproducing and printing advertisements correctly, we take no responsibility for errors.

## Management Committee

President :	<b>Mary Bennett</b>	(03) 5425 5551
Secretary:	<b>Regina Bennett</b>	(03) 5425 5402 bridgeconnection.secretary@gmail.com
Treasurer:	<b>Terry McKenzie</b>	(03) 5425 3262
Magazine:	<b>Kathy Hall &amp; Regina Bennett</b>	(03) 5425 3272



## Mia Mia Opera 2016

**October 22nd and 23rd**

at Mia Mia Hall, Valley Rd, Mia Mia.

### Featuring performers from The Opera Studio.

Mia Mia Mechanics' Institute invites you to join us as we enjoy their voice control and musicianship, along with the dramatic and physical skills that have captivated our audiences in previous years.

"It was a joy to perform in front of two such receptive and enthusiastic audiences. The energy in the Hall drove the performers to push themselves to a level of performance resulting in truly communicating their stories, and in so doing, bringing Opera to life."

- Matthew Nash, Manager of The Opera Studio, 2015.

Our sponsors include Rowanston on the Track and Ruperts Ridge Estate, wineries and accommodation providers.

This event is supported by the City of Greater Bendigo.

**Bookings now open at**

**www.trybooking.com/MGJK**

**Twilight Opera - Sat 22nd October 6PM - \$60.00**

**Daylight Opera - Sun 23rd October 1.30PM - \$30.00**

Audiences at each session enjoy the same performance.

The Twilight Opera includes pre and post performance refreshments.

The Daylight Opera includes refreshments after the performance.

# Tax Returns BAS Super

# KMATAX & accounting

**Open late and Saturdays**

43B High Street, Kyneton

ph: **5422 3178**

mob: **0498 389 184**

**www.kmatax.com.au**



**KMATAX & Accounting**  
is a CPA Practice

## SUBSCRIPTION

If you are unable to receive a **RELIABLE** free delivery of the Bridge Connection, you can subscribe for **postal** delivery for \$25 per year.



Please contact the treasurer on:

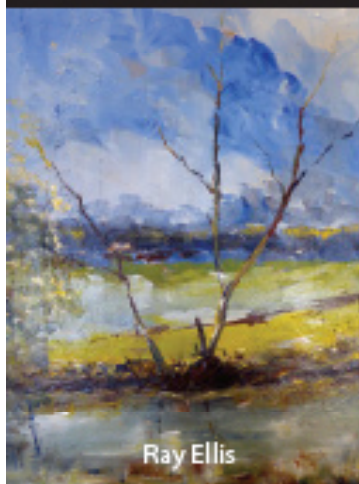
(03) 5425 3262 or email:

**bridgeconnection.secretary@gmail.com**



# The House Gallery EXHIBITION

The Exhibition opening is on  
**Sunday 23 October at 1.30pm**



Ray Ellis



Joyce Hopewood-Knight

Meet the Artists Ray and Joyce  
and enjoy their display of beautiful paintings.

**R.S.V.P. to 0408 154 315 for catering purposes.**

2127 Heathcote/Redesdale Rd Redesdale  
(Next door to the Rural Café)

Want an Accountant  
you can talk to and build  
a working relationship with?

- Let's streamline your financial management so you can focus on running your business
- From bookkeeping through to tax returns and compliance, I'll help you to manage it all
- Individual Tax Returns from \$110.00
- I am a reliable, local professional who can visit you at your home, farm or office

*Call me for a chat to find out  
how I can help you.*

Christine Greene B.Bus (Acc.), Tax Agent

T: 03 5422 6460 M: 0481 101 455

E: [contact@mrta.com.au](mailto:contact@mrta.com.au)

[www.macedonrangestax.com.au](http://www.macedonrangestax.com.au)



**MACEDON RANGES**  
TAX & ACCOUNTING

TAX SPECIALISTS & BUSINESS STRATEGISTS

THE 2016  
*Malmsbury Village Fayre*  
SUNDAY  
20 NOV 2016

WINE • MULTICULTURAL FOOD • ART • CRAFT • LIVE MUSIC

**COME ALONG FOR A GREAT  
DAY OF FUN, FOOD & WINE**

📍 Malmsbury Botanic Gardens via Calder Freeway, Malmsbury  
🎟 Gold coin entry 🕒 10am-4pm  
Proceeds to local community organisations  
📞 Contact Helen 0417 312 098 or Sandra 5423 4225

[www.malmsburyvillagefayre.org.au](http://www.malmsburyvillagefayre.org.au) f @

A good life  
deserves the  
best farewell

**WILLIAM  
FARMER**  
FUNERAL DIRECTORS

Andrew and Heather Hampton

151 McCrae Street Bendigo  
12 Victoria Street Eaglehawk

**P: 5441 5577**

[www.williamfarmer.com.au](http://www.williamfarmer.com.au)

*A tradition that continues...*

# VOTE

# 1

ADVERTISEMENT

## GET A WRIGGLE ON COUNCIL

COMMUNITY.  
INTEGRITY.  
ACTION.



[www.yvonnegrigglesworth.com.au](http://www.yvonnegrigglesworth.com.au)

### YVONNE WRIGGLESWORTH EPPALOCK WARD

Written & authored by  
Y. Wrigglesworth,  
11 William St., Redcliffe VIC 3201

# Elphinstone

## Post Office & General Store

*'In the heart of the  
Elphinstone community'*



- Newspapers/ Magazines
- Origin Gas Bottles
- Bread • Milk & Groceries
- Postage Services

*'The General Store where  
community meets business.'*

Gill & Dave (03) 5473 3200  
9 Bateman Street, Elphinstone

# REDESDALE

## General Store

AUSTRALIA  
**POST**

Fully Electronic  
Postage Service

Come in for some  
great tasting...



Newspapers  
& Groceries

Banking  
Facilities



Full alcohol  
licence and  
bottle shop  
with local  
wines.



Takeaway  
Food Service



Fuel  
& Oil



'Great service in a country  
environment from  
Cody and Leigh'

### OPEN 7 DAYS

Hours: **Mon-Tues** 8am to 5pm | **Wed-Sun** 8am to 6pm

Phone (03) 5425 3154

2609 Main Road, Redesdale

# RK Earth

## Ross Knight Earthmoving

Servicing Mia Mia, Redesdale, Heathcote & District



Let us help you with your next road,  
dam or house site.

Over 40 years experience in the district

Phone **Ross 0428 843 988**

or the office: (03) **5425 5506**

Email: [info@rkearth.com](mailto:info@rkearth.com) Web: [rkearth.com](http://rkearth.com)