



ISSUE NO. 81 DECEMBER 2016

FREE

For the Mia Mia- Redesdale Region including:
• Heathcote • Derrinal • Glenhope • Baynton • Sdonia
• Barfold • Langley • Sutton Grange • Elphinstone • Kyneton

BRIDGE CONNECTION COMMUNITY NEWSPAPER



facebook.com/RedesdaleMiaMia

Know someone heading to uni in 2017?
Applications for our 2017 Scholarship
program open 1st December.

Bendigo and Adelaide Bank Limited, ABN 11068049178 AFSL/Australian Credit Licence 237879. S48951-10

Heathcote & District
Community Bank® Branch

 **Bendigo Bank**

bendigobank.com.au/heathcote 

*Seasons
Greetings*

Kyneton Toyota



TOYOTA

"We are Proud to support
Bridge Connection
& the local Macedon Ranges Community"

JUST OFF THE FREEWAY!

"Proud to have LOCALS in the
Drivers Seat"



Oh what a feeling!

kynetontoyota.com.au | 03 54 210 210

15 mins from
Melbourne
Airport.

Kepala Pet Resort

LUXURY ACCOMMODATION FOR PETS

Kepala Pet Resort provides five star luxury accommodation for a wide range of pets including cats, dogs, rabbits and guinea pigs.

We provide overnight, weekend and long term accommodation for all breeds of cats and dogs. Our friendly and experienced staff, understand the needs and expectations of both customers and their pets and therefore are dedicated to ensuring a happy, safe stay for your pet.

Kepala Pet Resort & Canine Country Club

55 Edwards Rd Diggers Rest

For more information: (03) 9740 1272

Email: info@kepala.com.au

www.kepala.com.au



BIRD QUIZ with NIGEL HARLAND



This is our last bird of the year. I have thoroughly enjoyed putting the quiz together each month and I hope you have enjoyed it too. Maybe the editors will allow me space on the colour pages next year. Congratulations to Jasper Shea from Barfold who correctly guessed the Superb Fairy-wren. It is the only Fairy-wren that we find in our part of the Continent and is fairly common in urban situations as well as bush settings. The bird shown is a male in breeding season. The females are a light brown colour and off season the males revert to the same colouring. They are promiscuous birds, with males seeking out several partners, sometimes from other groups – presenting pink flowers to potential mates.

So, with best wishes for the festive season, I will leave you, not with a Turkey, but a similar species which again is a common local resident. Season's Greetings,

Nigel

Contact us on with your guess about which bird this is above and **WIN a \$20 book voucher** from Aesop's Attic bookshop, Kyneton. Send answers to bridgeconnection.editor@gmail.com or phone or text to: 0407 116 899

The BRIDGE PET PALS proudly sponsored by



This is a photo to introduce our Chocolate Labrador "Gemma" to everyone. Gemma attended the Fire Brigade Awareness day held recently at the Agnes Mudford Reserve, and had her photo taken in the Redesdale outfit. Gemma loves people so it was very exciting for her to have a lovely day out.

Norma Barker.

Kyneton Veterinary Hospital
Where animal lovers heal
Call us today on
035422 1099
67 High street Kyneton



Send us a picture of your very special pet and a few words to describe him or her and why you love your pet so much. See page for this year's winner. Start sending photo's for next year. Send them to bridgeconnection.editor@gmail.com

EDITORIAL

First of all, thank you to all of you who have been so enthusiastic and supportive this year of our little local paper which we hope reflects our local interests and culture. This is the last edition until March.

Thank you also to all our regular contributors who add information and humour in a reliable and dependable way.

Congratulations to our new three Eppalock Ward Councillors - Marg O'Rourke (Mayor), Yvonne Wrigglesworth and George Flack. Thank you to our last councillors for all their help and interest in our community.

We have attempted to put together a list of useful local contacts and numbers (page 16) for you to cut out and keep. This is a work in progress and we would appreciate your input regarding accuracy and additional contacts. please keep your pet pals photos and bridge Abroad contributions coming in. We love them.

Have a great summer and stay safe.



**Kathy Hall
and
Regina Bennett
Co-editors**

bridgeconnection.editor@gmail.com
ph: 0407 116899



CONTENTS

Regular articles	Page	Special articles	Page
Advertising rates	22	Gorse Busters	21
Bird Quiz	2	Etymology of Woolley Words	4
Bridge Abroad	23	Kyneton Town Hall goes orange	19
Bridge Connection Contacts	22	Mia Mia Flower Show Winners	15
Church Services	14	New Mayor	20
Dr Tim	13	Opening Kez's Hideaway	19
Editorial	3	Platypus breeding and floods	6
Farmers' markets	9	Rabbits Run	20
Garden Patch	14 & 15		
Hall Happenings	16	Notice of Events	
Kerry Anderson: Entrepreneurs	12	Bush market	6
Langley Primary School	17	Shakespeare in the Vines	7
Letters to Editors	11	Summer Night Movie	10
Local Contact List	16		
Pet Pals	2		
Politics	7 & 8		
Quilt project	23		
Quote of the month	8		
Rainfall	14		
Recipe of the month	18		
RRRC Chairman's report	17		
Subscription	22		
What's on in Heathcote	9		



DEADLINE
20th of each month

Proudly printed in Kyneton

Castlemaine, Kyneton & Gisborne
CopyCentre
Printing together for our community

**Design & Pre-press
Plan Scanning, Finishing Services.**

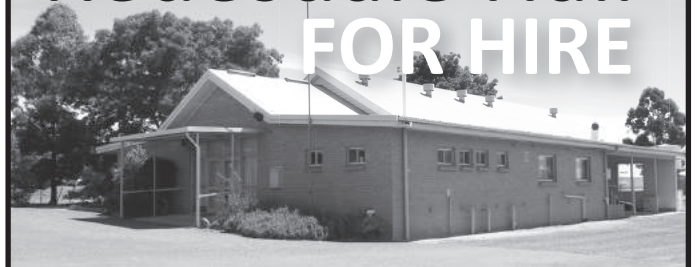
*Not just a Copy Centre...
we are so much more.*



www.windarring.org.au

**58 Mollison Street
Kyneton
03 5422 2400**

Redesdale Hall FOR HIRE



Ammentities are available for catering, meetings, weddings and club or family celebrations.

Please phone

Carolyn (03) 5425 3194 for more information.

Redesdale Hall Activities:

- 1st Monday monthly, 10am or 4.15pm, Bridge Connection Committee meeting
- 2nd Tuesday monthly, 1pm - Hall Comm. Meetings.
- 2nd Tuesday monthly, 7 pm - Rec. Reserve Meetings.

Roaster for Hire

Commercial sized roaster available for hire from the Redesdale and District Association.

\$75 for members and \$100 for non-members.

(Free hire to Hall, Rec. Reserve Committee, and CFA)

Phone 0418 130 206.



The Etymology of Woolly words

A very good friend of mine recently introduced me to the work of Mark Forsyth and I have been transfixed by the journeys he takes through the English language. He is an Englishman who writes a witty blog called *Inky Fool* and I would recommend it and his talking books to anyone who derives pleasure from words. In his book, *The Etymologicon*, he takes a 'circular stroll through the hidden connections of the English language' and I was very keen to share his section on wool with our readers. So here, with the permission of the publishers, is Martin Forsyth's erudite ramblings through words connected with wool:

"Heckling is, or once was, the process of removing the knots from wool. Sheep are notoriously lackadaisical about their appearance, so before their wool can be turned into a nice warm jumper it must be combed.

It's easy to see how combing wool and teasing out the knots could be used metaphorically for *combing* through an oration and teasing the orator, but the connection is probably more direct and goes to the Scottish town of Dundee.



Dundee was a radical place in the eighteenth century. It was the local centre of the wool trade and was therefore overrun with hecklers. The hecklers were the most radical workers of all. They formed themselves into what today would be called a trade union and used collective bargaining to guarantee themselves good pay and perks. The perks were mostly in the form of alcohol, but that was to be expected.

They were a political lot, these hecklers.

Every morning while most of them were busy heckling, one of their number would stand up and read aloud from the day's news. They thus formed strong opinions on all subjects and when politicians and dignitaries tried to address them, their speeches were combed over with the same thoroughness as the wool. Thus *heckling*.

Wool is everywhere in language. If you possess a mobile phone, you are probably wooling your friends everyday without even realising it. You are, after all, currently reading wool.

Or had you never noticed the connection between *text* and *textile*?

That you send woolly messages on your telephone and read wool and cite wool from the Bible is all down to a Roman orator names Quintilian. Quintilian was the greatest orator of his day, so great that the Emperor Domitian appointed him as tutor to his two grand-nephews who were also his heirs. Nobody knows exactly what Quintilian taught them, but Domitian soon sent them both into exile.

The two lines of Quintilian that interest us are in the *Institutio Oratorica*. A gargantuan twelve-volume work on absolutely everything to do with rhetoric. In it, Quintilian says that after you have chosen your words you must weave them into a fabric - *in texta iungantur* - until you have a fine and delicate *text[ure]* or *textum tenue atque rasum*.

It's the sort of thing we say all the time. We *weave* stories together and *embroider* them and try never to lose the *thread* of the story.

Quintilian's metaphor lasted. Late classical writers took up *text* to mean any short passage in a book and then we took it to mean anything that was written down and then somebody invented the SMS message. This sheep-skin writing is all very appropriate, given that the size of books depends on the size of a sheep.

Paper was invented in China about two thousand years ago, but we in the West didn't take up the invention until the fourteenth century. Even then, paper was considered an oriental oddity. The first English paper mill was founded in 1588.

Before paper, readers had to do with one

of two alternatives. They could use the papyrus plant, which grew plentifully in Egypt. If you mashed up papyrus you could make something that resembled paper - indeed it was similar enough that papyrus is where we get the word *paper*.



Unfortunately, there is very little papyrus in England. Instead, we used sheepskins, and now you can too. Here's the recipe.

1. Take one sheep.
2. Kill it and skin it (it's vital to do this in the right order).
3. Wash the bloody skin in water, then soak it in beer for a couple of days until the hair falls out.
4. Let it dry stretched out on a wooden rack called a *tenter*. To keep it taut and flat, attach it using tenterhooks.
5. After a couple of days you should have something that's approximately rectangular with four sad extrusions that used to be legs.
6. Cut off legs and discard.
7. Trim the remainder down until you have an exact rectangle.
8. Fold in half.
9. You should now have four pages (printed front and back) that are roughly the size of a modern atlas. This is called a folio. All you need now to make an atlas of more than four pages is more sheep.
10. Fold it in half again and you'll have eight pages at roughly the size of a modern encyclopedia. You'll need to slice at the top to make them turnable. This is called a quarto.
11. Fold again.
12. Provided you started off with an average-sized medieval sheep, you should now be holding something pretty much the size of a hardback novel. This is called an octavo.
13. Fold again
14. Mass-market paperback.

When Caxton built his printing press in the fifteenth century, he set it up to use sheepskin, not paper. When paper was finally introduced it was manufactured to fit the existing printing presses and that's the reason that both the text you're reading and the book (magazine) that contains it are dependent upon sheep. Of course you may be reading this on your e-book reader, but as those have been designed to mimic the size of normal books, you're still at the mercy of the sheep.

Wool gets everywhere in language. Muslim mystics are called *Sufis* because of the woolen *suf* garments that they wore. *Burlesque* dancers on the other hand are taking part in a non-sensical or trifling show named after the Latin *burra* meaning a tuft of wool. Burras were used as covering for desks, and that gave us *bureaus* and then *bureaucracies*.

Then there are all the different kinds of wool: cashmere came originally from Kashmir and Angora came from Ankara, the capital of Turkey. Turkey is, of course, the country you eat for Christmas."

From the book: *The Etymologicon* by Mark Forsyth. Published by Icon Books Ltd.
Reproduced with permission from the publisher.

Kathy Hall

Drone takes pictures of Redesdale and Mia Mia



Nathan Clarke from Top Snap takes overhead photos of Redesdale and Mia Mia for the redesdale.net website which is soon to be redesigned and updated. www.topsnap.com



QUALITY FARM SHEDS

Machinery	Barns
Hay Sheds	Horse Arenas
Stock Shelters	Workshops
Shearing Sheds	Garages

Building Quality Farm Sheds since 1975

CENTRAL
steelbuild

T/A Central Vic Sheds

1300 955 608

8 Hoyle Court, Kyneton



Bendigo
Travel & Cruise Centre

336 HARGREAVES ST. BENDIGO
www.bendigotravelandcruise.com.au
03 5441 8811

Find us on 

creative
designs
for your
business

logos menus flyers posters
invitations brochures magazines
business cards advertisements
letterheads with compliment slips
full business imaging

lyn ingles | graphic designer
blupen@ncable.net.au
0429 911 980

Sponsoring the 'Bridge Connection'

blue
blue pencil publishing

FOUND!

Missing steer

Thanks to our brilliant community and readers of the Bridge Connection the black 8 month old steer lost from a property in Sutton Grange has been found and returned to its owners. Zane Tronson wishes to thank everyone who helped and who cared. He is very impressed with his new neighbours!

Flooding interrupts platypus breeding season

Recent flooding in the Campaspe and Loddon rivers is likely to have prevented the successful breeding this season of one of Australia's most iconic animals.

The September and October flooding of the Campaspe and Loddon rivers occurred at a critical time for baby platypus, leading Australian Platypus Conservancy Biologist Dr Melody Serena to emphasise the importance of future environmental flows down the two waterways.



"October is the peak time of year when females incubate their eggs and eggs hatch in burrows in the banks of streams and rivers. Platypus eggs are quite small and newly hatched babies are only about as big as a jelly bean," she said.

"During floods like the ones we just saw, platypus nursery burrows will fill with water and the eggs and babies will be lost. Although the mothers themselves are expected to survive, they simply aren't equipped to move their eggs or small offspring to safety as flood waters rise.

"So, in terms of reproduction, the populations in the Campaspe and the Loddon have taken a big hit this year."

Dr Serena said environmental flows in the Campaspe and the Loddon over the next year will be vital to allow platypus breeding to be successful.

"It is going to be really, really important to try to keep flows up in the rivers," she said.

Continued on page 10

www.redesdale.net



www.redesdale.net



Redesdale

Redesdale Bush Market

Sunday 12/3/2017

Agnes Mudford Reserve

2631 Kyneton - Redesdale Rd, Redesdale,
3444

The Redesdale Hall Committee are holding their annual Bush Market in 2017 on the Labour Day long weekend at the Agnes Mudford Reserve offering something of interest for all ages.

The Committee are pleased to announce that the **Bendigo and District Concert Band** will once again be entertaining the crowds.

Children's Entertainment includes face painting, an animal farm and a jumping castle.

Several car clubs will be displaying their vehicles on the day. The Market begins at 9.00 am and finishes at 2.00 pm on Sunday 12th March.

*****Please Note - Limited Food and Plant Stall sites available, amongst others.*****

Enjoy a wide selection of stalls, ranging from local produce including olives, honey, jams, chutneys, preserves, herbs, spices, beef jerky, cake stall and plants, through to clothing - new, pre-loved and vintage, fishing tackle, tools, art, photography, craft items, electric warmers, children's plaster crafts, crochet, bags & baskets, glassware, crockery, nail wraps, toys, bric a brac, food stalls, devonshire tea, icecream, great coffee and lots more!

Why not invite your family and friends along to explore this very picturesque area in Central Victoria and make a day of it? Bring along a picnic rug or chair, enjoy the music and take in the local surroundings.

(Please note that the weather can be quite different to other areas - sometimes drier! If in doubt, it's a good idea to check with the Weather Bureau. All Welcome!)

Outside Stalls Available - \$25.00.

Bookings and Enquiries:

Alwyn - 0419 513 976 or Carolyn - 03 5425 3194.

**Like & Share Us on Facebook:
"Redesdale Bush Market 2017"**

Proudly Sponsored By the "Rural Cafe"
We are currently looking for SPONSORS!
**Phone Carolyn on 54253194 if you'd like
your Business
promoted as a Sponsor.**

Make your special celebration a party to remember!

Party equipment for hire

Tables - (183cms) rectangle, plastic (\$5 each)

Chairs - white plastic (\$1 each)

Umbrellas - charcoal (\$5 day)

Table cloths - white (\$2 each)

Other various party items for hire



**For additional information contact
0418 130 206**





Shakespeare in the Vines
 @ Rowanston on the Track Winery

Saturday, 14 January, 2017
Live Garden Performance 6pm
By Essential Theatre
 @Rowanston on the Track Winery
 \$70 performance & picnic meal
 or \$50 performance only
Early bird discount
 Book before Jan 1 2017 - \$65 & \$45

Book through Trybooking
<https://www.trybooking.com/MZDU>
 54255492 / 0423607758
 2710 Burke and Wills Track GLENHOPE



Going to Uni in 2017?
Our Scholarship is coming soon!

Heathcote & District
 Community Bank® Branch

What's on in the Heathcote Region

Saturday 3 December 2016

Lions Bush Market- 8am-1:30pm. Contact on 0400 675 995 for bookings for stall at the market. Venue: Barrack Reserve High St Heathcote

Tuesday 6 December 2016

Play Bowls Month - Barefoot Bowls and lots of fun for everyone each Tuesday. Cost \$5 per head per week. For more info contact Peter on 0418 304 259 or at heathcotebowls@outlook.com or www.heathcote.bowls.com.au Venue: Heathcote Bowling Club 1 Herriot St Heathcote

Thursday 8 December 2016

Shared Dinner Conversations - Sit back & watch me grow. Get together, try something different, meet new people. Bring a plate to share. Please contact the Community House ph 5431 0930 to register. Venue: The Community House 55 Hospital St Heathcote

Tuesday 13 December 2016

Play Bowls Month - Barefoot Bowls and lots of fun for everyone each Tuesday. Cost \$5 per head per week. For more info contact Peter on 0418 304 259 or at heathcotebowls@outlook.com or www.heathcote.bowls.com.au Venue: Heathcote Bowling Club 1 Herriot St Heathcote

Saturday 17 December 2016

Heathcote Community Christmas Carols- Time: 7pm -9:30pm, Free entry. Contact Heathcote Club Greg Speirs on 5433 2237 Venue: Barrack Reserve 126 High St Heathcote

Coming Events – Save the date

Friday 6th January 2017- Summer in the Park- Outdoor Cinema. Time: 8:30pm-11pm, cost free. Contact- Kate Lawrence ph City of Greater Bendigo 5434 6000 Venue: 2631 Kyneton-Redesdale Rd's Redesdale

Friday 27th January 2017- Summer in the park – Freeza Outdoor Cinema. Time: 6:30pm- 10:30pm, entry free, contact- ph City of Greater Bendigo 5434 6000 Venue: Barrack Reserve 126 High St Heathcote

Sunday 29th January 2017 City of Greater Bendigo- Heathcote Golf Club PGA Legends Pro-Am

Friday 3rd & Saturday 4th February 2017 Sanguine Estate Music Festival (Bendigo) - Venue: The Capital Theatre Bendigo

Friday 10th, Saturday 11th, Sunday 12th February 2017 Sanguine Estate Music Festival (Heathcote) - (SOLD OUT)

Steph Ryan MP

Member for Euroa

2/55 Carrier Street, Benalla VIC 3672
www.stephryan.com.au
 03 5762 2100

This publication was funded through Parliament's Electorate Office and Communications budget.



Local women urged to screen for breast cancer

Women across the Euroa electorate are being urged to book a breast screen to ensure cancer is detected early.

Member for Euroa and Deputy Leader of The Nationals Steph Ryan today released the latest participation statistics for women in the Euroa electorate who participate in the free BreastScreen Victoria program.

“It is estimated that this year more than 16,000 Australian women will be diagnosed with breast cancer and the devastating reality is that it will include women from our region.

“Just 52.6 per cent of women in the Euroa electorate were screened for breast cancer in last two years,” Ms Ryan said.

“The good news is that we are marginally higher than the state participation rate of 52.3 per cent for women aged between 50 to 74 but there are still 4,905 women who did not get screened in the past two years.

“Taking that 10 minutes out of your day once every two years to visit a BreastScreen Victoria clinic for a free screen could be the difference between life and death.”

BreastScreen Victoria CEO Vicki Pridmore said women need to continue their commitment to screening every two years because finding cancer early saves lives.

“The biggest risk factor for breast cancer is being a woman over 50 years of age. With one in eight Victorian women diagnosed with the disease, having a breast screen is the best way of finding cancer early before any symptoms are noticed and when treatment is likely to be most successful,” Ms Pridmore said.

Seventy-five per cent of women diagnosed will be over the age of 50, the vast majority of whom will have no family history of the disease.

BreastScreen Victoria recruits women aged between 50 and 74 with early detection to give women the best chance of successful treatment and recovery.

You can find your nearest BreastScreen Victoria clinic or book in for the mobile bus at www.breastscreen.org.au or by calling 13 20 50.

Steph Ryan 0488 441 820 or (03) 5762 2100

**BIG THANK YOU
TO OUR
REGULAR SPONSORS**

BLUE PENCIL PUBLISHING

KYNETON VET HOSPITAL

KYNETON COPY CENTRE

BENDIGO TRAVEL AND CRUISE

ELPHINSTONE GENERAL STORE

REDESDALE GENERAL STORE

Quote of the month

“If a problem has no solution, it may not be a problem, but a fact - not to be solved, but to be coped with over time.”

Shimon Peres

Todd PROPERTY

**Real Estate Sales
& Property Management
with Service.**



Brad Todd
Director



Barb Walker
Sales Consultant



Walter Morelli
Property Consultant

"We help make dreams a reality"

5433 2288

95 High Street Heathcote



Federal Member for Bendigo

LISA CHESTERS MP

PO Box 338 Bendigo 3552
Cnr Williamson & Myers Sts, Bendigo 3550

T: 034 5443 9055 • F 03 5443 9736
E: Lisa.Chesters.MP@aph.gov.au

Twitter: @LMChesters • Facebook: /LisaChestersBendigo



Labor

Paid parental leave changes to punish pregnant women

Lisa Chesters MP will next week advocate for families across central Victoria when she speaks in Parliament about the Liberal Government's controversial proposal to alter the conditions of paid parental leave. The proposal will leave 80,000 new parents each year almost \$12,000 a year worse off, placing the plans of already pregnant women into chaos. Ms Chesters said the legislation, due to start on January 1, is simply not fair.

"Women have every right to access the paid parental leave agreements that they have negotiated with their employer and top up with the Government's minimum wage scheme.

"If you've been able to negotiate a parental leave top up at the expense of a pay rise, you should still be allowed to access that.

"The Government has put a lot of families' plans into chaos. These changes will affect women that are already pregnant and who have already established their plans. This is not fair and it is not right."

Ms Chesters has spoken to concerned families and local healthcare professionals about the changes and will present their views and concerns at Parliament.

Bendigo lactation consultant (IBCLC) Jennifer Hurrell said the Government should not be forcing women back to work before they are ready. "The first three months after birth is a critical time for a mum and baby in terms of recovery time, breastfeeding and attachment to a primary carer. The current paid parental leave model allows that time.

"If the Government takes it away, it'll mean that some mums are made to return to work before they are physically or mentally ready. By doing this we will be depriving mother and baby the time to stabilise as a family."

Ms Chesters called on the Senate crossbench to block the legislation. "This was originally Tony Abbott's legislation, which Malcolm Turnbull has brought back in the hope it will pass in the new Senate.

"It was blocked in the last Senate, and I call on the crossbenchers to listen to central Victorian healthcare professionals and mothers and block it again.

"The proposal demonstrates how cruel this government is and how Malcolm Turnbull is the same as Tony Abbott."

Lisa Chesters 0425 755 929

FARMERS' MARKETS

Woodend Community Farmers' Market
Sat Dec 3rd
Cnr High & Forest Streets, Woodend
0487 444 090 Sharon Kittson

Daylesford Farmer's Market
Sat Dec 3rd
Daylesford Primary School
03 5664 0096 Peter Arnold

Kyneton Farmers' Market
Sat Dec 10th Jan 14th Feb 11th
St Pauls Park, Piper Street, Kyneton
54 221 025 Veronica Manifold

Riddells Creek Farmers' Market
Friday 9th December
Riddells Creek Primary School, Riddells Creek
0408 254 626 Ali Bant

Lancefield & District Farmers' Market
Sat Dec 17th
Centre Plantation, High Street, Lancefield
0407 860 320 Meggs Hannes

Maldon Market
9am to 2pm, Second Sunday of the month
www.maldonnc.org.auinfo

Authentic, community based farmers' markets.
BYO bags, baskets & trolleys.
Friendly dogs welcome on a leash.

CONNOLLY GLASS

- Broken Window Repairs • Mirrors
- Balustrades • Splashbacks
- Shower Screens: Framed
- Semi Frameless & Frameless
- Retro Fitted

**Double Glazing & Commercial
Window Frames & Glazing**

0428 535 101

177 Lyell Road, Redesdale. Vic. 3444

Email: chrisjen@bigpond.net.au

SUMMER MOVIE NIGHT

REDESDALE

FRIDAY JAN 6TH

AGNES MUDFORD RESERVE

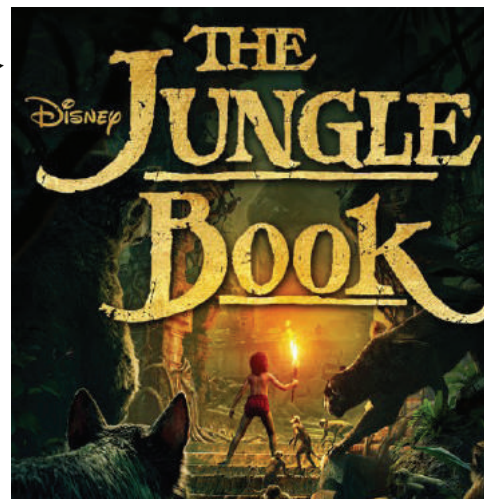
As part of the City Of Greater Bendigo "summer in the parks program," Redesdale has been lucky enough to secure an outdoor screening of a popular family film on our own Agnes Mudford Reserve.

Thanks to funding by the City Of Greater Bendigo, this screening is made possible as a free community event for the local community to get together and enjoy without the hassle of driving to a major centre for a night out.

The Jungle Book is the latest instalment of the popular tale that most adults will know, but will be amazed by the visually stunning computer generated animation from the Disney studios. Starring Ben Kingsley, Bill Murray, Scarlett Johansson, and Christopher Walken.

For the children it will be an adventure to remember.

So grab a deck chair or picnic blanket, enjoy a BBQ dinner cooked by the Redesdale Recreational Reserve Committee and enjoy a relaxed night out on our own public reserve.



Movie starts at dusk
Where: on the lawn of
Agnes Mudford Reserve
BYO chairs and blankets
For more information
phone 0428 253 104.

DEFIBRILLATOR

AT THE REDESDALE STORE

24/7

CALL 5425 3154 IF THE STORE IS CLOSED

Turn your house
into a home
 with Tucks
 locally made products



- Aluminium and Timber Windows
- Window Replacements • Security Doors
- Shower Screens • Wardrobe Doors

We are in your area regularly and offer a **FREE** measure and quote service.

We can offer supply and install prices.



**Tucks
Windows
BENDIGO**

Celebrating 43 Years
 providing top quality
 products and
 professional
 friendly service.

P: 03 5446 8855 E: tuckswindows@impulse.net.au

www.tuckswindows.com.au

Flooding interrupts platypus breeding season

Continued from page 6

"Because platypus reproduction uses so much energy, the females don't even try to breed if they are not in really good physical condition in spring. For that to occur, they need a long period of favourable flow in the months leading up to breeding so they can feed on plenty of aquatic bugs and store fat.

"If we want to keep the platypuses breeding, which we certainly do next year, it's going to be really important to ensure that flows are right in coming months, particularly from late summer through winter."

Dr Serena said the platypus populations in both rivers, especially in the Campaspe downstream of Lake Eppalock, were integral to conserving this species in the wider region.

"The platypus population downstream from Echuca in the Murray River is critically endangered," she said.

"The other known animals are in the Gunbower system, where probably fewer than 50 animals remain."

"The Campaspe is a really important source of juveniles and with the right conditions they can migrate to the Murray and potentially start to recolonise it."

North Central Catchment Management Authority (CMA) Environmental Water Manager Louissa Rogers said the CMA would work with Dr Serena and the local community and stakeholders over the next couple of years.

"Floods can be beneficial for rivers and, overall they are," she said.

LETTERS TO THE EDITORS

Dear Editors,

I'd like to thank all the residents and friends of Redesdale and who helped #GetAWriggleOnCouncil in last month's City of Greater Bendigo Council Elections. I am so thrilled to have been successfully elected, and I am honoured to now have this wonderful opportunity to represent the towns, suburbs and communities of the Eppalock Ward as a Councillor.

The importance of having small towns represented at the council table cannot be underestimated. Our residents, businesses and visitors contribute so much to the fabric of Greater Bendigo, and when Bendigo does well, small towns can thrive too.

Likewise, the continuing success and growing vibrancy of small towns like Redesdale, Mia Mia and Axedale help put Bendigo on the map. Tourists opt to stay an extra night to explore our region, sample our goods and hospitality and enjoy our natural assets.

I am looking forward to supporting our smaller communities and ensuring that decisions in the metro areas don't adversely impact our towns, rather that they benefit them directly or indirectly. I look forward to discussing any council matters or ideas you might have, and contact me at y.wrigglesworth@bendigo.vic.gov.au

Yours sincerely,
Yvonne Wrigglesworth
Eppalock Ward Councillor

Dear Editors,

Congratulations to you and your committee on the colourful edition of the "Bridge Connection". The colour photos of the "Redesdale Festival" are very, very nice, and were a great way to conclude our Art Show and Festival for 2016. The weather for the Festival was ideal for the events over the weekend.

Norma Barker, Redesdale.

Dear Editors,

This year, for the first time in five years, the value of Victoria's food and fibre exports fell. In 2015-16, exports totalled \$11.9 billion. Last year they exceeded \$12 billion. Agriculture Minister Jaala Pulford says this is "outstanding" but the results are actually a wake-up call for this city-centric Labor Government.



Redesdale Roofing & Plumbing

Let us make your home safe... Call us for a quote today!

Colorbond roofing, replacement or new roofing.
Galvanised roofing, replacement or new roofing.
Zinc roofing, replacement or new roofing.
Gutter renewal. Gutters for new homes, shedding.
Roof repainting, tiles or tin.

Follow us on 

0456 721 076

298 North Redesdale Road Redesdale

www.redesdaleroofingandplumbing.com

Victoria is Australia's powerhouse of food and fibre exports, making up 26 per cent of the national total, but there must be more investment in country Victoria to maintain and grow these important industries.

Labor's neglect of regional Victoria, including our crumbling country roads, is making it harder to do business and to get our agricultural products from paddock to port. It's vital there is more funding allocated to fixing and maintaining the country road network, and Labor must move forward with the Murray Basin Rail project.

Victoria also can't afford for the Andrews Government to drop the ball on the development of detailed protocols for the export sector so they can take advantage of the FTAs that have been negotiated.

The Liberal-Nationals value our farmers and food businesses. We understand that maintaining the status quo will not build a strong future for the industries that are the backbone of Victoria's regional and rural communities.

Peter Walsh
Leader of The Nationals
Shadow Minister for Agriculture



The ALBION KYNETON



Come and enjoy the experience that is The Albion Kyneton

The Albion offers a fine selection of local wines and famous beers on tap. Local produce from the Macedon Region is carefully prepared for classic Italian dinners. Children are catered for with a special menu just for their discerning palates.

The Albion is ideal for functions or parties. and offers indoor restaurant and outdoor courtyard dining.

Hours of Operation:
7 Days a Week 12noon till Late
• Lunch 12noon to 2pm • Dinner 6pm to 9pm

Phone for bookings (03) 5422 2066
Email drinkanddine@thealbionkyneton.com.au
1 Mollison Street, Kyneton Vic 3444
www.thealbionkyneton.com.au

SHOP RURAL THIS CHRISTMAS

As the annual Christmas shopping frenzy fast approaches I am starting to see the 'Shop Local' messages circulating on social media. Of course shopping local is great but it's not quite that simple as everyone who lives in a small rural town like Redesdale knows. The reality is that our options are quite limited. But there is still much we can do as rural residents with buying power.



The Boort Newsagency stocks a wide range of giftware to help keep locals like Lily in employment.

Here are three tips;
First and foremost we can support those few local businesses that we do have in town. And it doesn't have to be a product; it can also be a voucher for a service. I got my dad a voucher with a local computer support technician that was greatly appreciated in the following year (and saved me and his grandchildren from many late night calls!). Secondly, we can support other rural towns. My work takes me all over rural Victoria so I started my Christmas shopping by purchasing the odd gift or two as I browsed local shops from Cohuna to Boort, Wycheproof, and Donald. You would be amazed at what I found in the most unexpected places. Rural businesses tend to diversify so you can find unusual gifts in newsagents, post offices, cafes and butcher shops. Why not plan a day driving around your wider district to visit other rural towns. And thirdly, in the midst of a digital technological revolution, it is ridiculous to demonise on-line shopping especially when some of those online businesses are rural based and gaining benefit from a wider geographic audience. Check out the 'about' or 'contact' section to see where they are located. You may well find that you are supporting a young person in a rural community

Entrepreneurship
It's everybody's business
Practical ideas to strengthen rural businesses and communities
KERRY ANDERSON

Kerry Anderson's book on rural entrepreneurship has 10 chapters outlining positive action that can be taken by rural communities and twenty case studies of inspiring rural businesses and communities. Order through her website at www.kerryanderson.com.au/book/

such as my own daughter (below left) who manufactures and sells Fair Dinkum Dog Coats, or a number of local women employed at Tambo Teddies as I discovered on a recent trip through outback Queensland. Every dollar we spend in a rural town has a multiplier effect in these rural communities. It helps keep these small businesses alive and retaining jobs for local people.



Kerry Anderson

KA Rural Enterprises
Tel: 03 5470-5122
Mob: 0418 553 719
Email: info@kerryanderson.com.au
www.kerryanderson.com.au



General Repairs, Maintenance

Tiling, Carpentry

Painting, Gardening

Home & Garden Maintenance Services

Robert Schomacker 0407 823 900

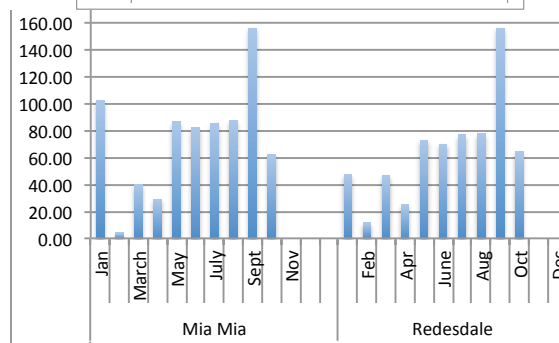
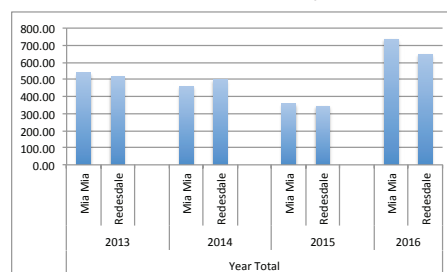
RAINFALL

The average yearly rainfall for Redesdale is about 601mms.

Thank you to Mary Bennett for the Mia Mia readings.

MISSING DATA

The Bureau of Meteorology has missing data for the first half of September for Redesdale. Therefore the rainfall for Redesdale has been assumed as the same as for Mia Mia. This is clearly not accurate but there are no other sources available as we go to print.



CHURCH SERVICES

CAROL SERVICE

Sutton Grange Uniting Church

SUNDAY Dec 18th 7 pm

Barfold Sunday 1st January will be the only local service in January.

Normal services resume in February

CATHOLIC CHURCH

Redesdale: 2nd Sunday of each month 11 am



Your Health!

with

Dr Tim

Well another year is rapidly drawing to a close and with it the promise finally of warm weather, and perhaps even some time spent at the beach, playing cricket down at the oval (does anyone have a big enough backyard anymore ?) or any number of other fun things in the sun.

Just remember though that some caution is required this time of year. Statistically hot weather is associated with increased deaths due to heat-related illness, and this is something that can easily be avoided by following a few basic rules.

Drinking lots of water keeps you cool - your body evaporates sweat

to do this.

There's an old song ends with "mad dogs and English men go out in the midday sun" - even if you are well prepared even moderate exercise can quickly result in dehydration - don't do it!

Plan what you must do - make the job as easy for yourself as possible. This could include looking at weather reports to time your tasks through the week or looking at different ways of doing your task. Remember radiant heat! This means not only shading yourself from the direct blast from the sun, but also considering other sources of radiant heat - for example masonry, glass and metal surfaces can absorb and reflect huge amounts of heat. If you are outside on a hot day the best place is under a tree on a green patch of grass - the trees and the grass are keeping cooler by evaporation too!

Be mindful of those around you - particularly young children, seniors and those with chronic

medical conditions. Be alert to the signs of heat exhaustion - including irritability, lightheadedness, fainting or headaches. Encourage others to drink plenty of water too.

For those of you who travel to escape the "sunburnt country" - you've got it completely beaten of course! - but whatever else you are doing these summer holidays - remember most importantly to keep your water bottle close by - and enjoy the chance to relax and spend time with your family and friends. Happy holidays and best wishes for the New Year to all.

Dr Tim Stobie

5422 1397



Important fire ready information:

New Vic Emergency App

Emergency Management Victoria have announced upgrades to their communications services.

The new VicEmergency app provides Victorians with access to warnings and incidents for fires, floods, storms, earthquake, tsunamis and water safety and will work alongside the new VicEmergency hotline and upgraded VicEmergency website this summer.

The VicEmergency app replaces the FireReady app and is now available to download from the App Store. FireReady will be switched off from midday Friday 18 November.

The VicEmergency website emergency.vic.gov.au has also been upgraded and a new VicEmergency hotline 1800 226 226 ensures Victorians continue to receive the best possible emergency information this summer through a range of sources.

The new VicEmergency app and hotline will work alongside the upgraded VicEmergency website to provide timely information about all emergencies.

The VicEmergency Hotline 1800 226 226 brings all emergency numbers together, including the Victorian Bushfire Information Line, the Victorian Emergency Relief Information Line and the VICSES Flood and Storm Information Line.

Visit emergency.vic.gov.au for more information or go to your app store on your mobile to download.



Warning on Remote Control Surveillance Drones

Fire fighting aircraft this season will not operate in the same air space as a Drone. If there is a fire avoid the temptation to have a look through a Drone as this could jeopardise the fire fighting effort.



**Do you require firewood cut,
rubbish removed
or a tree lopped?
We do that too...
call us for a quote.**

Les 0481 232 896

GRASS SLASHING



The Bridge: Redesdale Ramblings:

GARDEN PATCH

A Word for the Wise

Salvias are a mainstay of the garden in summer but many start to flower in spring and continue into the autumn – in frost-free areas winter doesn't faze them either! Apart from perennials and shrubs (some are virtually trees) in this genus there are annuals as well (actually tender perennials but treated as annuals) which are often used in floral bedding schemes which reached their peak during the Victorian Era – and still survive around Floral Clocks. "Bonfire Salvia" was the most commonly used one in garish orange-red but newer selections include white, coral and purple. "Mealy-blue Sage", *Salvia farinacea* is another perennial used as an annual; it has what appears to be a powdery "meal" on the flower stem and sepals and white or purple flowers.

The most useful *Salvia* is, of course, culinary sage, *Salvia officinalis*, which has been used for millennia for flavouring foods and medicines. In the garden Sage can be an attractive shrub with grey green leaves and purple flowers with variants sporting white flowers ('Alba'), purple foliage ('Purpurascens'), variegated in green and gold ('Aurea') or even grey-green, purple and white ('Tricolor') (below).



Other *Salvia* species are also used in the kitchen and the large-leaved types are used extensively in the Mediterranean countries. North American species are used in Native American ceremonies, including White Sage, *Salvia apiana* which is burned for its cleansing properties.

There are many herbaceous salvias which are useful in the garden and the one which has been used a lot in recent times is *Salvia nemorosa* with elegant spikes of flowers in shades of purple, violet and rose. When

they start to look tatty later in the season shearing them off at ground level will encourage new growth and a new flush of flowers.

The shrubby salvias can provide height and substance to the flower border with a huge range in flower colour. A favourite of many is *Salvia leucantha*, commonly called "Mexican Sage" with furry-felty looking flower-buds, usually in a strong purple, but also now available in white and pink. The flowers themselves can be white, pink or purple and protrude from the furry calyxes and can be in a contrasting colour to them. (See below) Coming from Mexico you would realise that this *salvia* can be frost tender but usually only the top growth is affected; new spring growth will soon make up for the frost damage and flower in the summer. We've found that this sage appreciates a good drink during summer.



A rather strange looking *salvia* comes from Africa and is known as *Salvia Africana-lutea* or *Salvia aurea* (below); it has silvery-green leaves and brown flowers emerging from reddish calyxes which persist after the flowers fall.



It is very drought tolerant when established and can grow in very tough conditions in full sun or light shade.

Another popular group of shrubs includes *Salvia greggii*, *Salvia microphylla* and their hybrid *Salvia x jamensis*. They originate in North America and Mexico and the colours include pure white, lemon, orange, red, pink and purple. Although shrubby they can be cut to the ground to regenerate when they get too twiggy and blooming is sparse. One of the most interesting varieties is called "Hot Lips" as it has red and white bi-coloured flowers though it can have pure red or white flowers on the same bush.

There are a lot more species and varieties of *salvia* but these are a few that do well for us. So, from "annuals" to perennials to shrubs in a huge variety of flower and foliage colour there are salvias which should be suitable for any garden in Central Victoria.

Cheers,

Fermi de Sousa,

the Redesdale Rock Gardener.





Hello Dear Readers,
Lady Bombay here.
Is summer here one does ask?
With the perpetuity of winter,
my poppies and roses tell me that
spring has finally arrived. Thanks
to the delights of rainfall, the
abundance of growth makes me
feel quite overwhelmed.
For my planting annuals of this

season, I have decided to plant a
new variety of Nasturtium called
Cherry Rose. Something cheery to
look at whilst doing ones dishes.
All new plantings from winter
seem to have established them-
selves, including Thorn, the gar-
dener's, "Meadow Patch". Throw
seeds like Edna Walling threw
potatoes at random, this is what
one receives, sunflowers, poppies a
plenty. Note to Thorn: Remember
to weed it on a regular basis as it
is a bit too random for my bodily
convolution.

As Thorn and I are in the garden
so much at the moment, and with
the mosquitoes in plague propor-
tion, I have decided that veiled
hats, white cotton long sleeved
shirts and sensible cotton drill

slacks are the current form of
"horto insecta" fashion.

My one suggestion to those of you
with verandas; fly wire at least a
section so as to give comfort to
ones after fives without the great
Australian salute.

Yuletide felicitations to one and all
in the district.

Time for mothers ruin.

Lady Bombay Sapphire.



MIA MIA FLOWER SHOW WINNERS

Pot Plants

1st place Helen Bennett
no second place

Flowers

1st place Helen Bennett with 29 pts
2nd place Therese Ryan with 19 pts

Produce

1st Place Grant Hulls with 12 pts
2nd place Jenny Dempster with 9 pts

School Groups

Egg Cup Prep- 3
1st Lachlan Smith
2nd Kofi Chambers

School Groups

Egg Cup Prep- 3
1st Lachlan Smith
2nd Kofi Chambers

Grade 4 – 6

1st Luca Weller
Equal 2nd
Zoe Patros &
Chelsea Smith



Bombay and a Bex

Send in your questions for Lady Bombay Sapphire to
bridgeconnection.editor@gmail.com

Dear Lady B,
Can you suggest a good Christmas planting theme of annuals? The
in laws are coming to stay.

No fuss gardener.
Redesdale

Dear No Fuss,
Impatience for a Christmas theme is the way, alternating with pots
of red and white in window boxes and pots in rows or rounds. Just
remember, there are two kinds of Impatiens/ce;

1/The pretty flowering kind, and

2/Yet another "retirement village" brochure from a caring relative
that thinks your garden is too big and that they are losing their
inheritance due to it.
Lady B

"Flowers have an expression of countenance as much as men or
animals. Some seem to smile; some have a sad expression; some are
pensive and diffident; others again are plain, honest and upright,
like the broad-faced sunflower and the hollyhock"

Henry Ward Beecher

NEEDED: Any *old greeting cards* to recycle
into new ones

Ring Janette for pick up. 0407 004 728.



REDESDALE - MIA MIA LOCAL CONTACTS

Fire		
Report a fire		000
Vic Bushfire Information Line		1800 240 667
Organisations		
City of Greater Bendigo		5434 6000
Macedon Ranges Shire Council		5422 0333
Mitchell Shire Council		5734 6200
Mount Alexander Shire Council		5471 1700
Powercore		132 412
Local Organisations		
Bridge Connection : Editors	Kathy Hall	0408 116 899
	Regina Bennett	0437 514 223
Bridge Connection President	Mary Bennett	5425 5551
Bridge Connection Treasurer	Terry Mackenzie	5425 3272
Mia Mia Messenger		5425 5565
Mia Mia Hall Committee	Wendy Hulls	54255590
Mia Mia Fire Brigade	Steve Cadasch	54255548
Otis Foundation		5444 1184
Redesdale and District Assoc. Inc	Kathy Hall (Sec.)	0407 116 899
Redesdale Hall Committee	Carolyn-Anne Boyd (Sec)	5425 3194
Redesdale Hall Hire	Carolyn-Anne Boyd (Sec)	5425 3194
Redesdale Recreation Reserve Cttee	Lindsay Booker (Sec)	0448 021 544
Suicide Bereavement Service	"Standby"	0439 173 310
Tennis Club	Linda Newnham	0400 554 716
Township Businesses		
Redesdale Hotel	Beth and Garth	03 4405 0601
Redesdale General Store	Dino Tomisic	5425 3154
Rural Cafe	Elizabeth and Shane	5425 3271
The House Gallery	Ray and Joyce	0408 154 315
Councillors		
City of Greater Bendigo,	Eppalock Ward	
	George Flack	0429 083 993
	Marg O'Rourke (Mayor)	0429 061 096
	Yvonne Wrigglesworth	0429 117 600

Politicians		
Federal Member for Bendigo	Lisa Chesters (Labor)	5443 9055
State Member for Euroa	Steph Ryan (Nationals)	5762 2100
Advertisers		
Breeze Energy Solutions		(03) 4309 4027
Cambia Hair Studio		0411 411 407
Central Victorian Sheds		1300 955 608
Connolly Glass		0428 535 101
Kepala Pet Resort		9740 1272
KMA Tax		5422 3178
Kyneton Toyota		5421 0210
Les - Grass slashing		0481 232 896
LnR Home Maintenance		0407 823 900
Macedon Ranges Tax and Accounting		5422 6460
Mica Grange		5474 8261
Party Equipment for hire		0418 130 206
Redesdale Roofing and Plumbing		0456 721 076
RK Earthmoving		5425 5506
Roaster for hire		0418 130 206
Rural Cafe		5425 3271
Tha Albion		5422 2066
Todd Property		5433 2288
Tucks Windows		5446 8855
William Farmer Funeral Directors		5441 5577
Sponsors		
Bendigo Travel and Cruise		5441 8811
Blue Pencil Publishing		0429 911 980
Elphinstone Post office and Store		5473 3200
Heathcote & District District Community Bank		1300 236 344
Kyneton Copy Centre		5422 2400
Kyneton Veterinary Hospital		5422 1099
Redesdale General Store		5425 3154

This is not a full list and is a work in progress. We need input from our readers regarding names and contacts that you would like to see published. Please also notify us if there are any errors. Please contact the editors on 0407 116 899 or by email on; bridgeconnection.editor@gmail.com



HALL HAPPENINGS



Our Hall was a picture of colour for the annual Art Show during the Redesdale Festival. Our stands which were made last year again served to display the artwork beautifully.

Friday 28th October was a lovely night for the opening which was made possible by the hard work of the many volunteers who all deserve our thanks, - you all know who you are - and the generous donations from our many sponsors.

Our Hall Committee members held a cake stall at 'Kev's Hideaway' in Redesdale on Saturday 26th November, the opening day of the facility. We are very pleased with the result as we raised over \$670.00 for Kev's Hideaway.

The house is a beautiful facility in a lovely location.
Norma Barker.

COMMEMORATIVE QUILT PROJECT

Ladies working on the 150 year Bridge Commemorative Quilt Project visited the National Gallery of Victoria to view the amazing quilts produced by various individuals and groups in Australia from 1800 to 1950. It was truly inspirational.

Pictured left to right: Judy Firkin, Wendy Hulls, Kathy Hall, Viv Ellis, Gloria Pocock and Sue Newnham.



Redesdale Recreational Reserve Committee Inc

Chairman's Monthly Report

December-2016

Hi Redesdalian's

Time passes so quickly when you're having fun. Since our last report lots of wonderful things have taken place. Firstly the slab construction for the pavilion was completed prior to the festival. What a great job performed by the contractor. To all who donated to the crowd funding to make it happen, a massive effort, thank-you again from the Reserve Committee. The CoGB has also supported the committee by supplying materials and equipment to grade the road behind the pavilion which is still a work in progress. The Hand Crafted, Wine, Food and Local Produce Market organized by the Reserve Committee on the Saturday of the festival was delightful. We were blessed with a perfect spring day, the layout and diverse selection of stalls presented a festive scene. Many people commented on the pleasant village atmosphere created. Feedback from stallholders and public alike indicate it is worth repeating next year. The Reserve Committee would like to take this opportunity to thank the many stallholders who attended, also thank-you to the committee members who tirelessly made it happen.

The Reserve committee also catered for the CFA field day held at the reserve and were able to raise a small amount from the sausage sizzle, unfortunately attendance wasn't as expected. As can be seen by the amount of effort put in by the Reserve Committee, a couple of community members have anonymously donated \$5000-00 toward the pavilion. When a gesture like this happens, it makes the effort to make Redesdale a better place worth while. To those community members thank you from the Recreation Reserve Committee. Finally Seasons greetings and a safe holiday period to the community. Until the New Year, happy holidays and remember

"REDESDALE THE PLACE TO BE SEEN"

Les Pocock
Chair
Redesdale Recreational Reserve Committee Inc.

Top right: the BBQ area at the Agnes Mudford Reserve.

Bottom right: Long evening shadows across the Agnes Mudford Reserve.



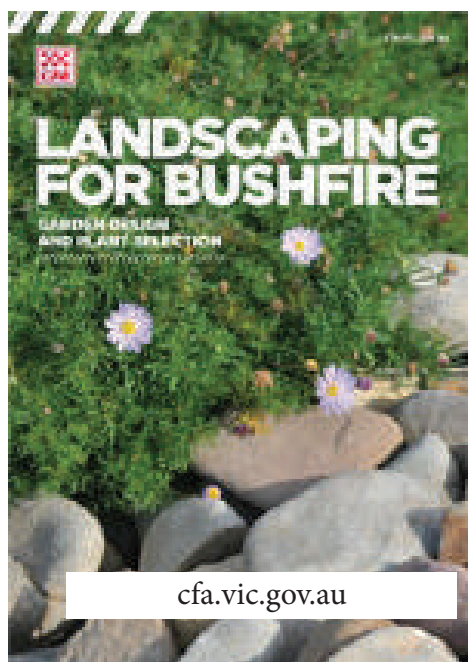
LANGLEY PRIMARY SCHOOL

AIS - MASK MAKING

The whole school, along with Redesdale Mia Mia P.S. have been industriously creating an individual and personalized mask, that will be used in a performance towards the completion of the school year.

The process thus far, has involved design, where care needed to be taken with the type of emotion and character that their mask would evoke. They then built a soft paper sculpture of their own heads and covered it with natural clay, remembering to take note of what shapes in the clay, would give the mask it's personality. Eg. a heavy brow, may indicate a little grumpy or an open circular mouth, may indicate surprise!! Students then, using papier mache' have completed several layers to build their mask, give it strength and are now allowing them to dry, until next week, when the project will continue!!!

The students have shown enormous persistence and attention to detail with this project and we congratulate their fine efforts.



cfa.vic.gov.au

RECIPE OF THE MONTH

18

YVONNE'S BANANA BREAD



Yvonne McGrath supplies the Rural Cafe with this delicious banana bread. We really recommend that you visit the cafe to try it. Yvonne has generously supplied our readers with the recipe:

- 3 bananas
- 1/2 cup self raising flour
- 1 tsp cinnamon
- 2 beaten eggs
- 1 cup (150g) plain flour
- 1 cup brown sugar
- 125 g of cooled melted butter

Combine and cook for 40 to 50 minutes on 180 deg C.



Pop into the pub for a membership form.

TREES



Ever since I came to Heathcote on the first of October 2008, I have been in love with trees. Driving between Heathcote and Bendigo, Heathcote and Kilmore, through the arch of eucalyptus trees with the background of blue trees and hay bales, is always a pleasure.

Now I have discovered that trees speak to each other "using an internet of fungus". Google tells me that Suzanne Simaid, who has been a forestry ecologist for 30 years in Canada, had made the discovery that plants talk each other, "to communicate their needs and aid neighbouring plants." Now when we are driving between Heathcote and neighbouring towns I can "hear" the trees talking to each other, particularly in the dense thickets of scraggly eucalypts, their branches still burnt by earlier Bush Fires. How they must have been crying out to each other as the flames roared.

Louise Joy
HEATHCOTE NEWSHOUND
14 November 2016

The Redesdale Hotel



Classic Country Pub Dining

For bookings
(03) 4405 0601



Monday - Closed
Tuesday - 4pm to 8pm
Wed to Sun • Lunch 12noon - 2.30pm
• Dinner 6pm - 8.30pm



redesdalehotel



The Redesdale Hotel

The Redesdale Hotel

2640 Heathcote-kyneton Road
Redesdale, Vic, 3444
info@theredesdalehotel.com.au

www.theredesdalehotel.com.au

KEZ'S HIDEAWAY IS OPEN!

Kez's Hideaway, Racecourse Road, Redesdale, was officially opened on Saturday 26th November. Around 300 people came along to support the Otis Foundation and have a tour of this magnificent property which has been purpose built by Paul Gray in memory of his late wife Kerry (Kez).



Paul Gray, builder, in front of the new house.

Andrew Barling, founder of Otis, officiated presenting Paul, and Andrew & Lisa Campbell (land donors) with a plaque to commemorate the day. The day was very well supported by locals who helped with cooking



the BBQ, setting up marquees, and of course the fabulous cake stall organised by the Hall Ladies which raised \$670 - of which all proceeds were kindly donated to Kez's Hideaway.



Andrew and Lisa Campbell and Paul Gray receive commemorative plaques from the Otis Foundation for their huge contributions.

It was such a fantastic day with much community support.

Andrew and Lisa would like to extend their gratitude to the CFA, the Hall Committee, Redesdale and District Association and the Reserve Committee. Huge thanks also go to Stone Axe Winery, the Rural Cafe and Barfold Estate.

They said, "The huge turn-out from the Redesdale community made this day such a success - it's what community is all about and we are truly humbled to live in such a great place."



Lisa cuts the ribbon to declare the house OPEN!!

Kyneton Town Hall goes orange for a great cause

Kyneton Town Hall will turn orange each night for 16 days as part of a campaign to end violence against women and children.

Orange lights will transform the historic town hall façade from 25 November to 10 December as part of the Victoria Against Violence campaign Go Orange!

The campaign aims to engage and educate the wider community about the link between family violence and gender inequality. The campaign encourages Victorians to wear or display orange in their homes, neighbourhood or workplace.

Orange is the colour designated by the UN Secretary-General's UNiTE to End Violence against Women campaign. As a bright and optimistic colour, orange represents a future free from violence against women and girls.

The campaign is timed to coincide with the United Nations' 16 Days of Activism against gendered violence campaign, which starts on International Day for the Elimination of Violence Against Women (25 November) and ends on International Human Rights Day (10 December). Mayor, Cr Jennifer Anderson said the state-wide campaign complemented local work to prevent violence against women and children.

"Lighting up the Kyneton Town Hall orange symbolises that Macedon Ranges stands together with the rest of Victoria to prevent family violence and promote gender equality," she said.

In the last five years, Council has led several projects and activities to tackle the underlying causes of violence against women in the Macedon Ranges such as gender inequality, rigid gender stereotypes and behaviours that contribute, condone or excuse violence

"Gender inequality is internationally recognised as a key underpinning driver of violence against women and continues to affect women at all stages, and in all areas of their lives," Cr Anderson said.

"While we are working towards building a society based on respect and non-violence to increase women and children's safety and wellbeing, we still have a long way to go judging by the latest statistics".

According to information from the Victorian Government:

- In the year ending June 2016, the number of family violence incidents went up by 10 per cent to 78,012
- For the year July 2015 – June 2016, the number of females affected by family incidents was three times the number of males affected
- More than 74 per cent of women with a disability have been victims of violent sexual encounters at some point in their lives
- Women with disabilities are 40 per cent more likely to be the victims of domestic violence than women without disabilities
- Over 500,000 women have reported that their children have seen or heard partner violence
- One in four women have experienced violence.

If you or someone you know is experiencing family violence, help is available. Call 1800 RESPECT – 1800 737 732. In an emergency call 000.

For confidential support and information call Safe Steps 1800 015 188 (family violence response line, available 24/7)

The Men's Referral Service (1300 766 491) provides anonymous and confidential telephone counselling, information and referrals to men to help them to take action to stop using violent and controlling behaviour.

Swearing in of the new Mayor

We were lucky enough to be invited to a special council meeting to witness the new Mayor, Margaret O'Rourke, being officially sworn in as the Mayor of the City Of Greater Bendigo. A very formal ceremony, the new councillors took it in turns promising to make Bendigo great and saying how hard they would work for the city. I sat thinking what about the small towns and outlying areas. When Mayor O'Rourke made her acceptance speech it was pleasing to see that she recognised our presence there and made a point of thanking the people of Redesdale and Mia Mia for their support. She also pledged to work hard for the people of the Eppalock Ward. I feel that our new Mayor is a good choice.



Mayor Margaret O'Rourke, Lisa Campbell and Jess Carr.



Left to right: Andrew Campbell, Lisa Campbell, Rod Campbell, Alison Campbell and Yvonne Wrigglesworth.

Formalities over, it was a chance to mingle and get to meet our new councillors. Cr George Flack told me that he had been to a dance in the Redesdale Hall in the 1970s and not been back since. He assured me that as our council representative he would be a more familiar face.

Cr Yvonne Wrigglesworth, who lives in Axedale, struck me as as being a champion for the small town cause. She had many ideas about keeping small towns in the forefront of COGB councils minds.

One thing I noticed from the night is that pleasingly, councillors seemed to have a good idea of what was going on in the area, func-

tions and events that have been held recently were enquired after with much interest. The more events we hold, the more acknowledgement from the City of Greater Bendigo. This augers well for future support from our newly elected councillors.

On a sad note, it was disappointing to farewell Cr Rod Campbell, who has not re-nominated due to ill health. Cr Campbell (no relation!) has been a staunch supporter of Redesdale and has attended many events and meetings during his tenure on Council. All the best to you Rod and to your wife Alison.

Andrew Campbell



Rabbits Run is a memorial drive that finished with a huge lunch at the Redesdale Hotel on Nov 20th. It was arranged by Dean Black of Gisborne. Garth Campbell, our host at the hotel, knew Dean and his family from his days at the Telegraph in Gisborne. Approximately 150 came for lunch and spent the afternoon chilling out to the music of very talented Grim Fawcner from Bendigo. A great day was had by everyone and certainly put Redesdale on the map!

Beth McIlwain



KEEN TO CUT YOUR HOT WATER BILLS BY 75% ???



Solar Power Solar Hot Water
Heat Pump Hot Water
On Grid & Off Grid
Domestic & Commercial

energysolutions@breeze.org.au

03 4309 4027

U3A Kyneton

New Management Committee

U3AK elected three new members and said farewell to some dedicated past members of the committee at its recent AGM.

Committee members Amanda Harland, Pam Newton and Barbara Parrott stepped down at the AGM. They will be greatly missed.



Three new members joined the Management Committee at the recent AGM: Linda Johnson, Rob Hardy and Peter Johnson.

Our 2017 committee members in the photo above are (l to r) back: Dave Wauchope, Peter Johnson, Len Baker (Treasurer), Rob Hardy, and (l to r) front: Leigh Baker, Alan Moor, Geoff Brookes (President), Linda Johnson and Margaret Chandra (Vice President).

Already plans are in hand for exciting, additional activities in 2017 as the members' numbers continue to grow. New members are always welcome. The 2017 Enrolment Day will be 16 January. For more information and enquiries visit the website: www.u3akyneton.org.au.



Gorse busters Jan Elder and Barbara James inspecting treated gorse at Barfold.

CAMBIA HAIR STUDIO

Louis Soncin
0411 411 407

By Appointment only

66a Piper Street, Kyneton Vic 3444



Well done to Redesdale's newest fire fighters.



Graduating from the CFA recruit course are (left to right in yellow) Michelle King, Mandy Mitchell, Brandon Dimech and Andrew King. Pictured with course instructor Lindsay Booker on the left.

Gorse Busters

Overrun with gorse at your place? Would you like someone to cut and paint it with poison (Roundup)?

The Victorian Gorse Task Force in conjunction with Landcare Groups provides assistance to landowners to eradicate gorse by providing grants at a 1:1 contribution scheme.

In effect that means that if a landowner contributes \$2000, they will receive another \$2000 of work i.e. \$4000 of work in total.

Campaspe Valley Landcare Group is currently looking for landowner/s who would like to participate in this scheme. At this stage, we have \$4000 of work available, which would require a contribution of \$2000 from one landowner (or \$1000 from two landowners who would each receive \$2000 of work done, etc.)

The grant can also cover the cost of the herbicide or landowners can pay separately for this. If herbicide is not taken out of the grant money, the \$4000 would provide about 10 days work for cutting and painting by a team.

If you are interested or would like more information, please contact Jan Elder (President) 54 234268 or Barbara James (Secretary) 0458 590 642 or email archiemcleod1@gmail.com

Come and try our coffee at the **RURAL CAFÉ**



In the centre
of Redesdale

*Now serving Norma's
famous apple pie!*

Open 8am to 5pm

*A great place to stop for all day breakfast, lunch, excellent coffee
and fresh cakes.*

Phone: **03 5425 3271**

BRIDGE CONNECTION COMMUNITY NEWSPAPER

Advertising Rates/Sizes

Size	Height x Width	Price per issue	12 Editions
Business Card	55mm x 90mm	\$25	\$250
Quarter Page	130mm x 90mm	\$50	\$500
Half Page	130mm x 190mm	\$95	\$950
Full Page	270mm x 190mm	\$175	\$1,750

Colour Advertisements plus 20%.

Please send editorial or advertising copy to:
bridgeconnection.editor@gmail.com
or by post to **866 Coliban Park Road, Redesdale, Vic 3444.**
For other editorial enquiries, please phone **0407 116 899**

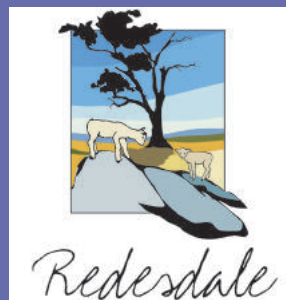
Bridge Connection Distribution

800 Copies printed and distributed to Redesdale Mia Mia Region, including Barfold, Baynton, Derrinal, Elphinstone, Glenhope, Kyneton, Langley, Metcalf, Sidonia and Sutton Grange

Disclaimer: The Bridge Connection Inc. Committee wishes to advise that the views or remarks expressed in this publication are not necessarily the views of the volunteer Bridge Connection Inc. editorial or production team and no service or endorsement is implied by the listing of Advertisers, sponsors or contributors. Although every effort is taken in reproducing and printing advertisements correctly, we take no responsibility for errors.

Management Committee

President : **Mary Bennett** (03) 5425 5551
Secretary: **Regina Bennett** (03) 5425 5402
bridgeconnection.secretary@gmail.com
Treasurer: **Terry Mackenzie** (03) 5425 3262
Magazine: **Kathy Hall & Regina Bennett** (03) 5425 3272



**IT'S TIME TO RENEW YOUR REDESDALE AND DISTRICT
ASSOCIATION MEMBERSHIP OR TO JOIN UP FOR
THE FIRST TIME**

**Membership applications can be downloaded from the
Redesdale website: www.redesdale.net**

Bendigo
Travel & Cruise Centre

336 HARGREAVES ST. BENDIGO
www.bendigotravelandcruise.com.au
03 5441 8811

Find us on 



**Tax Returns
BAS
Super**

KMATAX
& accounting

Open late and Saturdays

43B High Street, Kyneton
ph: **5422 3178**

mob: **0498 389 184**

www.kmatax.com.au



KMATAX & Accounting
is a CPA Practice

SUBSCRIPTION

If you are unable to receive a **RELIABLE** free delivery of the Bridge Connection, you can subscribe for **postal** delivery for \$25 per year.



Please contact the treasurer on:
(03) 5425 3262 or email:
bridgeconnection.secretary@gmail.com

The Bridge Abroad



proudly sponsored by Bendigo Travel
and Cruise 5441 8811

Bendi 
Travel & Cruise Centre

A prize at the end of next year!

Bendigo Travel and Cruise have sponsored this regular section. Next time you go away (Australia or overseas) send us a pic of you or a friend holding a copy of the Bridge Connection and we will enter it for a prize



Brian Paterson (above) can't go anywhere without his Bridge Connection. Here he proves it by showing that he took it to Venice!



Jo Smith-Sargent relaxes with her favourite publication while in London. Tower Bridge looms ominously behind her.

Want an Accountant you can talk to and build a working relationship with?

- Let's streamline your financial management so you can focus on running your business
- From bookkeeping through to tax returns and compliance, I'll help you to manage it all
- Individual Tax Returns from \$110.00
- I am a reliable, local professional who can visit you at your home, farm or office

*Call me for a chat to find out
how I can help you.*

Christine Greene B.Bus (Acc.), Tax Agent

T: 03 5422 6460 M: 0481 101 455

E: contact@mrrta.com.au

www.macedonrangestax.com.au




MACEDON RANGES
TAX & ACCOUNTING

TAX SPECIALISTS & BUSINESS STRATEGISTS

A good life deserves the best farewell

 **WILLIAM
FARMER**
FUNERAL DIRECTORS

Andrew and Heather Hampton

151 McCrae Street Bendigo
12 Victoria Street Eaglehawk

P: 5441 5577

www.williamfarmer.com.au

A tradition that continues...

Elphinstone

Post Office & General Store

*'In the heart of the
Elphinstone community'*



- Newspapers/ Magazines
- Origin Gas Bottles
- Bread • Milk & Groceries
- Postage Services

*'The General Store where
community meets business.'*

Gill & Dave (03) 5473 3200
9 Bateman Street, Elphinstone



Plan and prepare.

**THE REASONS ARE
BLACK AND WHITE.**

It's your responsibility to be fire ready this summer.

Prepare your property, fire plan and emergency kit now.

When hot, dry, windy days are forecast, check Fire Danger Ratings daily and monitor warnings via local radio, the VicEmergency website and app.

Leaving early, before a fire starts, is always the safest option.

emergency.vic.gov.au

Download the VicEmergency app



FireReady **VICTORIA**
State Government

Authorised by the Victorian Government, 1 Treasury Place, Melbourne

REDESDALE

General Store

AUSTRALIA
POST

Fully Electronic
Postage Service

Come in for some
great tasting...



Newspapers
& Groceries

Banking
Facilities



Full alcohol
licence and
bottle shop
with local
wines.



Takeaway
Food Service



Fuel
& Oil



"Great service in a country
environment from
Dino and his friendly team"

OPEN 7 DAYS

DINO

Phone (03) 5425 3154
2609 Main Road, Redesdale

RK Earth

Ross Knight Earthmoving

Servicing Mia Mia, Redesdale, Heathcote & District



**'Dam construction, erosion works,
building sites and general earthworks'**

Over 40 years experience in the district

Phone **Ross 0428 843 988**

or the office: (03) **5425 5506**

Email: **info@rkearth.com**

Web: **rkearth.com**