



ISSUE NO. 80

NOVEMBER 2016

FREE

For the Mia Mia- Redesdale Region including:
• Heathcote • Derrinal • Glenhope • Baynton • Sdonia
• Barfold • Langley • Sutton Grange • Elphinstone • Kyneton

BRIDGE CONNECTION COMMUNITY NEWSPAPER



facebook.com/RedesdaleMiaMia

Proud sponsors of the Mia Mia Opera
Saturday 22nd and Sunday 23rd October

Heathcote & District
Community Bank® Branch

 **Bendigo Bank**

bendigobank.com.au/heathcote 

Bendigo and Adelaide Bank Limited, ABN 11068049178 AFSL/Australian Credit Licence 237879. S48951-10

Beautiful day at the Redesdale Festival !



Kyneton Toyota



TOYOTA

"We are Proud to support
Bridge Connection
& the local Macedon Ranges Community"

JUST OFF THE FREEWAY!

"Proud to have LOCALS in the
Drivers Seat"



Oh what a feeling!

kynetontoyota.com.au | 03 54 210 210

Fabulous art show and festival !



Famous photographer, Simon Griffiths (below), judges Tanya White's photo as the winner of this year's festival photo competition. He said it was "quintessentially Australian, and I love her use of space and colour. It is also very well framed".



Above and below are two of the 5 decorated sheep on display at various venues at the festival.



Chevelle Williams (below) was very pleased with her second prize for a perfect study of a Wiltshire ram's horns. It was very hard for Simon to chose.



Criss Canning (right) is a celebrated artist from Melbourne. Luckily she is a friend of Mia Mia print-maker, Kevin Foley, who invited her to open the show. Her works may be found in the National Gallery of Victoria and other State capital cities as well as numerous private collections. More locally, her works may be found at the Castlemaine and Ballarat galleries. To view some her beautiful work, go to crisscanning.com.au.

The Sydney Morning Herald summed up Criss's work thus:

"Unerring, expert, gorgeous, scary...the paintings of Criss Canning.....conflate the sobriety of Margaret Preston with the sumptuousness of Hilda Rix Nicholas. These are her historical precursors. As for her peers, perhaps she has none, Canning is in a club of one."



Criss Canning at the opening of the Redesdale Art Show.
Photograph: Lyn Ingles -blue pencil publishing-



Daniel Hercott played beautifully at the AM reserve.

Laura Lavender's decorated sheep was remarkable. Love the shape of the little bare patch at the top too.



Kevin Foley explains his technique at his open studio.



Janette Johnson holds the fort at the Hall.

15 mins from
Melbourne
Airport.

Kepala Pet Resort

LUXURY ACCOMMODATION FOR PETS

Kepala Pet Resort provides five star luxury accommodation for a wide range of pets including cats, dogs, rabbits and guinea pigs.

We provide overnight, weekend and long term accommodation for all breeds of cats and dogs. Our friendly and experienced staff, understand the needs and expectations of both customers and their pets and therefore are dedicated to ensuring a happy, safe stay for your pet.

Kepala Pet Resort & Canine Country Club

55 Edwards Rd Diggers Rest

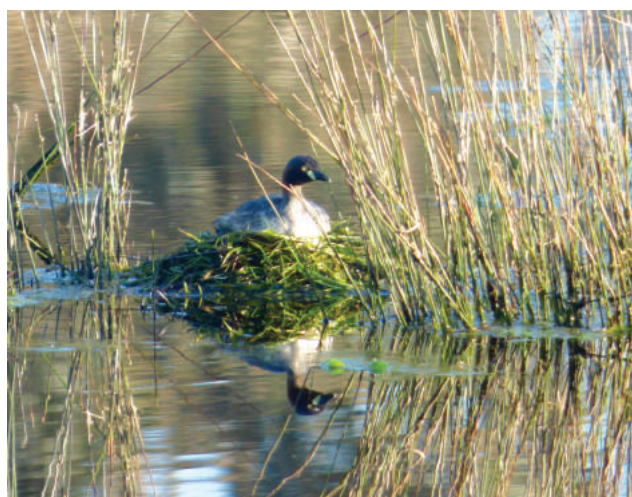
For more information: (03) 9740 1272

Email: info@kepala.com.au

www.kepala.com.au



The BRIDGE PET PALS proudly sponsored by



Kyneton Veterinary Hospital
Where animal lovers heal
Call us today on
035422 1099
67 High street Kyneton



BIRD QUIZ with NIGEL HARLAND



Welcome to the Bird Quiz for November and many congratulations to Silas Sermershein who correctly identified last month's bird as the King Parrot. It is a very spectacular bird with its contrasting red and green plumage. The female has a green head and breast in comparison to the red colouration of the male. It lives on the eastern side of the continent and we are almost on its western border. It is a bird largely of wet forests, but in recent years it has been found in more domestic surrounds, being attracted by fruiting trees and feeding stations. It is one of the larger parrots, being around 43cm (17 inches) in length and can become fairly tame.

Moving on to this month's bird, we have something much smaller and relatively common in the district. As I have mentioned before, many birds have a variety of names, but I need two or more words for this birding delight.

Contact us on with your guess about which bird this is and
WIN a \$20 book voucher from Aesop's Attic bookshop,
Kyneton. Send answers to bridgeconnection.editor@gmail.com
or phone or text to: 0407 116 899



In the absence of any pet pictures having been received this month, we have added a picture (left) of an Australasian Grebe sitting on her nest a week ago. Every self-respecting dam in the area will have a pair of grebes owning it as their territory! Eds

Send us a picture of your very special pet and a few words to describe him or her and why you love your pet so much. See page for this year's winner. Start sending photo's for next year. Send them to bridgeconnection.editor@gmail.com

EDITORIAL

Mia Mia and Redesdale absolutely shone this month! Mia Mia held its spectacular flower show and put on the amazing annual operatic event. Redesdale hosted its art show and festival but it was certainly not a Redesdale only event! Helpers and exhibitors came from everywhere in the district - from Kimbolton to Barfold, from Mia Mia to Sutton Grange. It was truly a district event. The opening of the art show was very well attended and the artwork was of a very high standard. It is a credit to the organisers that they were able to attract Criss Canning to open the show.

We have the City of Greater Bendigo to thank for the extra colour pages in this Festival Special edition. The grant we applied for specifically asked for extra money for colour pages for this edition.

Visitors to the Agnes Mudford Reserve will also have noticed that the concrete has been laid in the pavilion in readiness for the "lock-up stage" to begin. Well done to the Reserve Committee.

Talking to readers at the art show opening we learnt that there is an appetite for another fiction serial. We are hoping to publish one next year.



**Kathy Hall
and
Regina Bennett**
Co-editors

bridgeconnection.editor@gmail.com
ph: 0407 116899



CONTENTS

Regular articles	Page	Special articles
Advertising rates	24	Festival events and pictures
Bird Quiz	4	Campaspe Valley LCG
Bridge Connection contacts	24	CNAV Conference
CFA	6	Hall Happenings
Church Services	14	Kerry Anderson: Entrepreneurs
Dr Tim	15	Major Mitchell Journey
Editorial	5	Nancy Begg Poem
Farmers' markets	11	Opera
Garden Patch	16 & 17	Wasp Control
Pet Pals	4	
Politics	8 & 9	
Quilt project	23	
Quote of the month	10	
Rainfall	14	
Recipe of the month	20	
RRRC Chairman's report	19	
Subscription	24	
The Bridge Abroad	25	
What's on in Heathcote	9	

DEADLINE
20th of each month

Proudly printed in Kyneton

Castlemaine, Kyneton & Gisborne
CopyCentre
Printing together for our community

Design & Pre-press
Plan Scanning, Finishing Services.

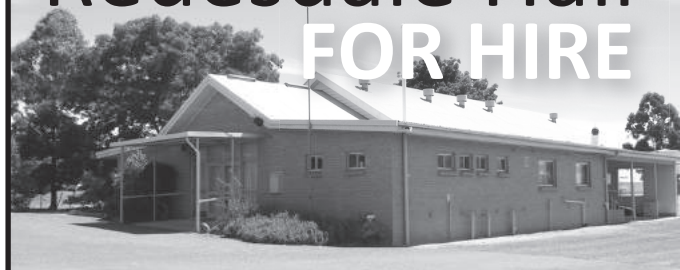
*Not just a Copy Centre...
we are so much more.*



www.windarring.org.au

58 Mollison Street
Kyneton
03 5422 2400

Redesdale Hall FOR HIRE



Ammentities are available for catering, meetings, weddings and club or family celebrations.

Please phone

Carolyn (03) 5425 3194 for more information.

Redesdale Hall Activities:

- 1st Monday monthly, 10am or 4.15pm, Bridge Connection Committee meeting
- 2nd Tuesday monthly, 1pm - Hall Comm. Meetings.
- 2nd Tuesday monthly, 7 pm - Rec. Reserve Meetings.

Roaster for Hire

Commercial sized roaster available for hire from the Redesdale and District Association.

\$75 for members and \$100 for non-members.

(Free hire to Hall, Rec. Reserve Committee, and CFA)

Phone **0418 130 206.**

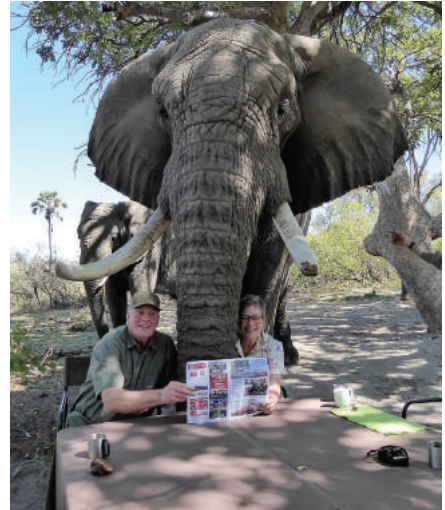



Community FUN Day
 Sausage sizzle
 Saturday, 26 November 2016
 10am - 2pm
 Official opening @ 11:20am
 House tours
 Kids activities
 CFA display
 Join us for a celebration and to thank the community for their generous support in bringing the Kez's Hideaway breast cancer retreat to reality.
 Kez's Hideaway, 242 Racecourse Road, Redesdale
 a partnership of


 kezshideaway.org.au

Bridge Abroad WINNERS!

Sharon and George Marshall, who used to live in Mia Mia, and who stay in touch via Bridge Connection, have won the coveted Bridge Abroad prize of two nights at Perricoota Vines Resort in Echuca. The entries were judged by Angela Meek of Bendigo Travel and Cruise who also attended the opening of the Redesdale Festival on October 28th to present the prize. Congratulations Sharon and George!



Best Prepared Property Award

A big thank you to all of you who put your property forward to be judged in this competition and for the effort put into doing the spring clean up. As part of a judging panel we looked at a range of homes. Every one of them was nominated because of the amount of work they have put in to make their residence fire safe. High on the list of criteria in judging is endeavour/effort. We appreciate the effort put in to clean up a property, we also judged on result (how much fuel reduction was achieved) and accessibility for emergency vehicles is important. Water in store and being able to get to it is something we rate highly.

Of the properties we visited, one stood out and impressed because of the tidiness and fuel reduction. We also liked the use of crushed rock as a fire proof barrier around the home. The owner is not a full time resident of Redesdale but the time he spends here has been well spent cleaning up around the home. So... Congratulations to Nick Sier of

484 North Redesdale Rd (opposite Les & Gloria Pocock's). Nick wins a \$200 Buntings voucher courtesy of the Redesdale Fire Brigade. Well done!

With the extended spring growth and greater than usual fuel burden coming into summer, it is great to see so many people making a big effort to clean up around their homes.

But remember this is fine while the grass is green, but as soon as it browns off:

Do Not Mow Or Slash Dry Grass!

A large number of fires we attend are early in the summer when people are trying to clean up their block and a stray spark ignites dry grass.

Safe mowing.

Andrew Campbell
Fire Prevention Officer
Redesdale Fire Brigade



Above: Nick, Carly, Harry and Charlie Sier outside their North Redesdale Road home.



Leigh Coghlan of Kyneton Vet Hospital judged the photo sent in by Jorja Bennett as the best entrant this year. The prize of \$100 to be spent at the Vet hospital was presented by Kathy Hall at the opening of the Redesdale Festival as Leigh was tied up with a horse emergency. Congratulations Jorja and Jualana who posed beautifully for this selfie.



DEFIBRILLATOR
AT THE REDESDALE STORE
24/7
CALL 5425 3154 IF THE STORE IS CLOSED

Puppy playdate

DOG

woofing GOOD TIME

BRING A LADY FRIEND

ALL DOGS WELCOME

treats GALORE

bark!

Agnes Mudford Reserve
Saturday Mornings
10.30am

Bendigo
Travel & Cruise Centre

336 HARGREAVES ST. BENDIGO
www.bendigotravelandcruise.com.au
03 5441 8811

Find us on



QUALITY FARM SHEDS

Machinery
Hay Sheds
Stock Shelters
Shearing Sheds
Barns
Horse Arenas
Workshops
Garages

Building Quality Farm Sheds since 1975

CENTRAL
steelbuild

T/A Central Vic Sheds

1300 955 608

8 Hoyle Court, Kyneton



UPDATE!! THE SLAB HAS BEEN LAID at the pavilion. Now the lock-up stage begins.

creative
designs
for your
business

logos menus flyers posters
invitations brochures magazines
business cards advertisements
letterheads with compliment slips
full business imaging

lyn ingles | graphic designer
blupen@ncable.net.au
0429 911 980

Sponsoring the 'Bridge Connection'



MISSING!

Missing steer

We have lost one black 8 month old steer from our property in Sutton Grange. Sightings have been made on Bendigo-Metcalfe Rd and Carnochans Rd, Sutton Grange. He has a small round yellow tag with PIC number 3GBNA000. Any information would be much appreciated, please contact Zane Tronson on 0410597485.

The Fallen



They rest in unknown graves in far off lands,
The flower of youth denied it's promised bloom.
As nations flaunted "glorious" battles won,
Their only prize lay in a lifeless tomb.

And sometimes in their dreaming timeless deep,
They may feel the ugly threats of war again.
If we hold the peace they won in sacred trust their
sacrifice will not have been in vain.

Nancy Begg,



Community members practice erecting the new marquee, purchased through a generous grant from the City of Greater Bendigo - getting ready for the festival.

Left to right: Pan Prendergast, Gary Prendergast, Rod Gibson, Gloria Pocock and Les Pocock.

Mica Grange

Spring Sculpture Exhibition and Open Garden

Featuring 16 artists and over 60 exhibits

Merging the wonders of art with the beauty of garden

373 Faraday Sutton Grange Road, Sutton Grange, Victoria 3448



Open each weekend from 22 October to 20 November 10am - 4pm
Open Cup week October 31 - November 4

Entry \$5 – Morning and Afternoon Tea
Sculptures, Plants, Garden Art and Preserves

Group bookings and lunch available during the week
www.micagrangegarden.com.au

Contact 03 5474 8261 | email: micagrangegarden@gmail.com

www.redesdale.net

www.redesdale.net



Redesdale

Make your special celebration a party to remember!

Party equipment for hire

Tables - (183cms) rectangle, plastic (\$10 each)

Chairs - white plastic (\$2 each)

Umbrellas - charcoal (\$20 day)

Table cloths - white (\$5 each)

Other various party items for hire



**For additional information contact
0418 130 206**



Shakespeare in the Vines

@ Rowanston on the Track Winery

Saturday, 14 January, 2017

Live Garden Performance 6pm

By Essential Theatre

@Rowanston on the Track Winery

\$70 performance & picnic meal
or \$50 performance only

Early bird discount

Book before Jan 1 2017 - \$65 & \$45

Book through Trybooking

<https://www.trybooking.com/MZDU>

54255492 / 0422607758

2710 Burke and Wills Track GLENHOPE



What's on in the Heathcote Region

Ongoing to Thursday 17 Nov 2016

Lions Bush Market

1st Saturday of the month - 8am - 1.30pm

Contact on 0400 675 995 for bookings for stall at the market. Venue: Barrack Reserve, High Street, Heathcote.

5th November, 3rd December

What's on in the Heathcote Region

Tuning in to Kids - Want to learn how to help your child manage feelings and emotions (emotional intelligence)? In his program you'll find out how to help your child understand and manage feelings such as worry, frustration and anger. For bookings and enquiries phone Megan Haddon on 5433 3090 or haddon.megan.m@edumail.vic.gov.au Cost is free, Time: Arrival and registration 12.15pm. Sessions: 12.30pm - 2.30pm.

Child care is available upon request when booking. Facilitators: Jo and Linda (Family Education Services Team Catholic Care Sandhurst).

Venue: Heathcote Primary School, 31 Herriot Street, Heathcote.

Monday 7 November 2016

Engine Room Presents - Time-2pm. Gina Hogan - Night and Day - The Doris and Shirley Show. (Doris Day and Shirley Bassey) Take a trip down memory lane, with stories and music performed as only Gina can with her amazing vocal versatility and engaging stage presence. Tickets \$10, available from Heathcote Visitor Centre. Ph: 54333121 Venue: Heathcote RSL Hall High St Heathcote

Tuesday 8 November 2016, Tuesday 15 November 2016, Tuesday 22 November 2016, Tuesday 29 November 2016, Tuesday 6 December 2016

Play Bowls Month - Barefoot Bowls and lots of fun for everyone each Tuesday until 13 December. Cost \$5 per head per week. For more info contact Peter on 0418 304 259 or at heathcotebowls@outlook.com or www.heathcote.bowls.com.au Venue: Heathcote Bowling Club 1 Herriot St Heathcote

Sunday 27 November 2016

Kammermusik Chamber Music Concert Three - Time: 2pm-4pm. Kammermusik is a chamber music ensemble company comprising a core of string players. The group performs a number of programmes each year in Melbourne and country Victoria with a wide variety of music ranging from Baroque to Contemporary. Special performances include singers, winds and piano. Ph 0144 512 303 or www.kammermusik.com.au Venue: Mia Mia Hall Valley Rd Mia Mia

Thursday 8 December 2016

Shared Dinner Conversations - Sit back & watch me grow. Get together, try something different, meet new people. Bring a plate to share. Please contact the Community House ph 5431 0930 to register. Venue: The Community House 55 Hospital St Heathcote

Tuesday 13 December 2016

Play Bowls Month - Barefoot Bowls and lots of fun for everyone each Tuesday. Cost \$5 per head per week. For more info contact Peter on 0418 304 259 or at heathcotebowls@outlook.com or www.heathcote.bowls.com.au Venue: Heathcote Bowling Club 1 Herriot St Heathcote

Coming Events - Save the date

2017- El Rocio Spanish Festival - 17, 18 and 19 February 2017. More details to follow closer to the event.

Steph Ryan MP

Member for Euroa

2/55 Carrier Street, Benalla VIC 3672
www.stephryan.com.au
03 5762 2100

This publication was funded through
Parliament's Electorate Office
and Communications budget.



Port of Melbourne Lease

From Peter Walsh Leader of The Nationals and
Member for Murray Plains

On any given day, up to 7000 containers are shipped out of Australia's largest port – the Port of Melbourne.

A constant flotilla of ships sail through the port each day, their cargo generating billions of dollars for Victoria each year.

More often than not, they're laden with tonnes of agricultural goods – cereal grains, dairy products, paper or timber – trucked to the port from the furthest reaches of regional Victoria.

So, it is only right that country Victorians should see their fair share of the \$9.7 billion profit flowing from the Port of Melbourne lease.

A 10 per cent share of the proceeds – more than \$970 million – will go to regional transport infrastructure, while an additional \$200 million is earmarked for an Agriculture Infrastructure and Jobs Fund.

I hope to see some of this money used to rebuild our crumbling country roads and improve regional Victoria's neglected passenger rail network.

It is vital these funds promote new investment and are not absorbed into existing transport programs, like the funded \$58 million port-rail connection which would take 3500 trucks a day off the road, but was shelved by the Andrews Labor Government until the port was leased. The lease has provided a \$1.2 billion bonus for regional Victoria – but it wasn't an easy road to get here.

The original deal proposed by the Andrews Labor Government neglected to recognise regional Victoria's role in building the port into the asset it is today. In fact, if Labor's original deal was successful, the entire proceeds generated by the sale would have been spent in Melbourne.

That's despite the fact the port has been built off the back of regional industries, like food exports.

The Lib-Nats fought for months to wrestle a fair return for regional and rural Victoria, securing a 10 per cent fund quarantined for regional transport infrastructure. Shamefully, country Victorians were forced to wait until the day after the sale was finalised for Labor to confirm we were worthy of two separate funds. Until then, Labor refused to commit to the \$200 million Fund on top of the 10 per cent for regional transport infrastructure. It would appear they were unwilling to risk the actual port proceeds failing to cover their Melbourne crossing removal program as well as passing on a fair share to regional Victoria. The Lib-Nats also fought for amendments that ensure this port lease has a positive impact for all Victorians.

We abolished the arbitrary 20-year extension, limiting the lease to 50 years, to ensure the port will provide profits for future generations. We also ensured a second container port can be built when it is needed, without leaving the state open to a hefty compensation bill.

A new port would take 10 to 15 years to build, so the 15 year cap – down from up to 70 years – means taxpayers will never have to pay compensation. The Andrews Labor Government claimed these amendments would "devalue" the port and "compromise the interests and wellbeing of the freight and logistics industry" – the windfall \$9.7 billion price tag would suggest otherwise.

I am immensely proud of the work of the Lib-Nats that went towards securing a nearly \$1.2 billion bonus to rural and regional areas – country Victoria deserves every cent.

**BIG THANK YOU
TO OUR
REGULAR SPONSORS**
BLUE PENCIL PUBLISHING
KYNETON VET HOSPITAL
KYNETON COPY CENTRE

BENDIGO TRAVEL AND CRUISE

ELPHINSTONE GENERAL STORE

REDESDALE GENERAL STORE

Quote of the month

"When you're driving, don't worry about the car behind you urgently trying to get past. If he needed to be in front of you, he should have left 5 minutes earlier."

Wise Local Mother

Todd PROPERTY

**Real Estate Sales
& Property Management
with Service.**



Brad Todd
Director



Barb Walker
Sales Consultant



Walter Morelli
Property Consultant

"We help make dreams a reality"

5433 2288

95 High Street Heathcote



Federal Member for Bendigo

LISA CHESTERS MP

PO Box 338 Bendigo 3552
Cnr Williamson & Myers Sts, Bendigo 3550

T: 034 5443 9055 • F 03 5443 9736
E: Lisa.Chesters.MP@aph.gov.au

Twitter: @LMChesters • Facebook: /LisaChestersBendigo



Labor

CHESTERS FEARS GOVERNMENT INTERVENTION WON'T RESOLVE VICTORIAN FIREFIGHTER DISPUTE

Federal Member for Bendigo, Lisa Chesters MP, has today said that she fears the federal Government's intervention will not resolve the bitter Victorian firefighter dispute.

"The Federal Government has amended the Fair Work Act and in my opinion, rather than put an end to this dispute, the changes will make the whole process more difficult.

"Collective bargaining between an employer and employees is complex and hard at the best of times. I fear the Federal Government's new laws will make it harder for the Victorian State Government, the United Firefighters Union and Volunteer Fire Brigades Victoria to reach an agreement.

"Not all volunteer fire fighters support the VFBV stance, meaning there could be a breakaway volunteer organisation that has the right to challenge both the VFBV and UFU.

"This has already been a nasty, bitter and politicised dispute. Local fire fighters are being called thugs and that kind of behaviour is not on.

"Rather than showing leadership and calling for the dispute to be resolved, Malcolm Turnbull and the Liberals have inflamed the dispute for their own political gain.

"I don't believe these new laws will do what the Government is claiming. Ultimately, responsibility lies with the Victorian State Government to resolve the dispute between the United Firefighters Union and the Country Fire Authority. It's their mess to clean up.

"It's my understanding that of the 60 plus volunteer only CFA brigades in the Bendigo electorate, none of them will be affected by the proposal.

"I proudly and loudly support all of our emergency service workers regardless of whether they are volunteers or employees.

"At the coal face, our CFA volunteers and career fire fighters work closely together to ensure our communities are safe," said Ms Chesters.

Ms Chesters has slammed the Prime Minister and the Liberal party for being hypocritical and creating hysteria for political gain.

"We all know the Liberals hate unions and the workers they represent. It's disappointing the Liberals are using this dispute to pursue their own political agenda.

"This is the same Liberal Government that shut down the Australian Emergency Management Institute (AEMI) on Mount Macedon and transferred its operations back to Canberra.

"Prior to this announcement AEMI trained local CFA volunteers higher up the chain of command to ensure they had the skills and expertise they needed.

"I will continue to be a strong voice for our CFA and emergency service workers and volunteers. They sacrifice so much for our community and as their local MP I will continue to support them," said Ms Chesters.

ENDS

Media Contact: Lisa Chesters 0425 755 929

FARMERS' MARKETS

Woodend Community Farmers' Market
Sat Nov 5th
Cnr High & Forest Streets, Woodend
0487 444 090 Sharon Kittson

Daylesford Farmer's Market
Sat Nov 5th
Daylesford Primary School
03 5664 0096 Peter Arnold

Kyneton Farmers' Market
Sat Nov 12th
St Pauls Park, Piper Street, Kyneton
54 221 025 Veronica Manifold

Riddells Creek Farmers' Market
Sat Nov 19th
Riddells Creek Primary School, Riddells Creek
0408 254 626 Ali Bant

Heathcote Region Farmers' Market
Sat Nov 19th
Barrack Reserve, High Street, Heathcote
Sherrie Coote 0417 598 460

Lancefield & District Farmers' Market
Sat Nov 19th
Centre Plantation, High Street, Lancefield
0407 860 320 Meggs Hannes

Maldon Market
Sun Nov 13th
www.maldonnc.org.au/ufv

CONNOLLY GLASS

• Broken Window Repairs • Mirrors

• Balustrades • Splashbacks

Shower Screens: Framed

• Semi Frameless & Frameless

• Retro Fitted

Double Glazing & Commercial
Window Frames & Glazing

0428 535 101

177 Lyell Road, Redesdale. Vic. 3444

Email: chrisjen@bigpond.net.au

OPERA

Mia Mia Hall resounded with the splendid voices of Gertrude Opera/The Opera Studio artists at Twilight Opera on Saturday 22nd October, and again at Daylight Opera the following day. On both days the rain gods smiled on this annual event as they have done for the past six years. As in previous years the audience was provided with refreshments on arrival and were able to sample a range of wine produced by Marilyn and John Frederiksen of Mia Mia's Rowanston on the Track winery.



Alexandra, Joshua, Allegra, Spencer, Lisa and Elizabeth take a bow.

Howard Nathan prepared the audience for the program that would follow, with his usual mix of wit, wisdom and his extensive opera knowledge. He welcomed the full house to the Mia

Mia Opera House which he believes compares favourably with the great opera houses of the world. He also thanked the major sponsors of the event, City of Greater Bendigo and the Heathcote and District Community Bank for their ongoing support of opera in Mia Mia, as well as the sponsors of accommodation for the artists and the people's Choice Award.



Mezzo soprano Allegra Giagu won the People's Choice Award for her Saturday evening performance.

The six artists performed works by Mozart, Sullivan, Donizetti, Strauss, Britten, Mascagni, Verdi and Offenbach. Each artist gave a brief introduction to each selected work, and explained their role in each. They reminded the audience that "Hey, It's opera!!" to explain the gender fluidity in some roles. Opera provides great sorrow, much unrequited love, rich people pretending to be poor people, much joyfulness, as well as wonderful music and lyrics.

The Gertrude Opera artists - Alexandra Lidgerwood, Lisa Parker, Spencer Chapman, Joshua Erdelyi-Gotz, Allegra Guiana and Elizabeth Chenille - gave a perfect demonstration of how enjoyable a night of opera can be, and how exhausting it is for the artists. The winner of the People's Choice award for best artist on Saturday evening, an award sponsored by Derrinal's Lynne and David McDonald and the Alice Amy McDonald Scholarship Trust, was won by mezzo soprano Allegra Guiana.



Soprano Alexander Lidgerwood

The artists were wonderfully supported by accompanists David Kram on Saturday evening, and Pam Christie on Sunday afternoon. As in all the great opera houses of the world, a grand piano was required and one was sponsored by Alan and Christina Weiss and John Saines.

Continued on opposite page

Turn your house
into a home
with Tucks
locally made products



- Aluminium and Timber Windows
- Window Replacements • Security Doors
- Shower Screens • Wardrobe Doors

We are in your area regularly and offer a **FREE** measure and quote service.

We can offer supply and install prices.



**Tucks
Windows
BENDIGO**

Celebrating 43 Years
providing top quality
products and
professional
friendly service.

P: 03 5446 8855 E: tuckswindows@impulse.net.au

www.tuckswindows.com.au



PROFESSIONAL RELIABLE SERVICE
RESPECTFUL HANDLING
CERTIFIED, TEN YEARS EXPERIENCE

REASONABLE RATES, NO POWER TOOLS

0422 021 064
www.edequinedentist.com

Continued from page 10:

The Mia Mia Opera House reverberated with song, applause, and even a little foot stamping during the encores on Sunday.

The foot stamping is perfectly acceptable in all great opera houses.

The artists and their manager, Matthew Nash, stayed at two of the district's most luxurious B&Bs sponsored by Rupert's Ridge in Redesdale and Rowanston on the Track in Mia Mia. After the encores and the foot stamping, Howard Nathan again thanked the sponsors and invited the audience to enjoy their gourmet supper prepared by the Mia Mia Hall's volunteer catering team. On leaving, more than one audience member reported that the opera performance was great, but the gourmet supper, and the Howard Nathan introductions were part of the reason they come back each year to Mia Mia's Opera.

Kate Hicks



Tenor Spencer Chapman wooed the audience with a beautiful rendition of 'You are my heart's desire.'



Heathcote Community Bank (above) were proud sponsors of the Photographic Exhibition at the Redesdale Hotel at the Redesdale Festival. Chairman of the Board, Steven Trompp presented the prizes at the Art Show opening event.


Redesdale Hall Happenings

Our Redesdale Hall was the venue for one of our favourite residents; Andrew Campbell held his 50th birthday party there. It was a very enjoyable night for all.

Our last Afternoon Tea Dance featuring "The Silhouettes" was held on the 25th September. It was a lovely afternoon, enjoyed by all the dancers and the hall committee members working in the kitchen. Planning is underway to have another dance next year with a new music group.

Norma Barker






The ALBION

KYNETON

Come and enjoy the experience that is The Albion Kyneton



The Albion offers a fine selection of local wines and famous beers on tap. Local produce from the Macedon Region is carefully prepared for classic Italian dinners. Children are catered for with a special menu just for their discerning palates.

The Albion is ideal for functions or parties. and offers indoor restaurant and outdoor courtyard dining.

Hours of Operation:
7 Days a Week 12noon till Late
• Lunch 12noon to 2pm • Dinner 6pm to 9pm

Phone for bookings (03) 5422 2066
Email drinkanddine@thealbionkyneton.com.au
1 Mollison Street, Kyneton Vic 3444
www.thealbionkyneton.com.au



Redesdale Roofing & Plumbing

Let us make your home safe... Call us for a quote today!

Colorbond roofing, replacement or new roofing.
Galvanised roofing, replacement or new roofing.
Zinc roofing, replacement or new roofing.
Gutter renewal. Gutters for new homes, shedding.
Roof repainting, tiles or tin.

Follow us on 

0456 721 076

298 North Redesdale Road Redesdale
www.redesdaleroofingandplumbing.com

Looking at landscapes with fresh eyes

with Kerry Anderson

As I drive throughout our beautiful region I marvel at the vision of the town founders who saw a blank canvas and were brave enough to paint a picture using their own imagination and the resources available to them. Not only did they take huge risks in their business investments, they also helped establish the schools, the hospitals, and the community infrastructure around their businesses. They did so understanding that no business is an island, that businesses needed to support each other, and people needed to have good reason to live in that community.

The community clearly drove growth with the Government only kicking in to help them get across the line. When you think about it, the same is still true. I don't know of any progressive community that waits for the government to tell it what to do. We are the drivers of change because we are the ones who value the community we live in.

While we should always celebrate the past and live in the present, we should also be constantly looking to the future.

I am excited. There are an infinite number of blank canvasses just waiting to be created as there are existing canvasses to be repainted. Today, when I see a vacant shop front I see a range of possibilities not even remotely like what used to be there.

For instance, those who have visited Castlemaine may have visited The Mill opposite the Botanical Gardens. Farmer turned entrepreneur, Phil McConachy, warns that it isn't a task for the faint hearted but it is achievable. 9,000 square metres of industrial buildings is now 80 percent leased to a mix of food and hospitality vendors, manufacturers and retail outlets.

Continued on page 21



KEN JAMES WINS TOP AWARD



Pam Baragwaneth, the President of the Royal Historical Society of Victoria and Ken James at the award night at the Arts Centre in Melbourne.

Ken James, familiar to all of us through his and Noel Davies' many historical accounts of local townships won (with co-winner, Pam Baragwaneth) the top award at the Arts Centre of the government's Community History Awards competition - they won \$5000.

On Friday, at the opening of the Art Show at the Redesdale Hall, Ken James launched the book about the History of Redesdale that he and Noel Davies have been working on for some time.

The new Redesdale book incorporates an update of an earlier book they wrote on Redesdale's schools. Also in 2014, they produced a large volume on the history of the Redesdale railway line.

The new book is officially dedicated to Agnes Mudford and unofficially to Ken's uncle, Victor Charity who was born and raised in Redesdale. Victor enlisted with the AIF in August 1915 and died in France of wounds on 25th July 1916. His mother was Julia Hannah, the sister of Ken's great-grand father William James.

Ken thanked everyone who helped with the book and special thanks went to Briony Barker for editing the book and to Briony and Elaine Murphy who prepared the surname list.

Kathy Hall

General Repairs, Maintenance

Tiling, Carpentry



L'n'R

**Home & Garden
Maintenance Services**

Painting, Gardening

Robert Schomacker 0407 823 900

CHURCH SERVICES

UNITING CHURCH

Barfold: 1st Sunday of each month

Metcalfe: 2nd Sunday of each month

Mia Mia: 3rd Sunday of each month

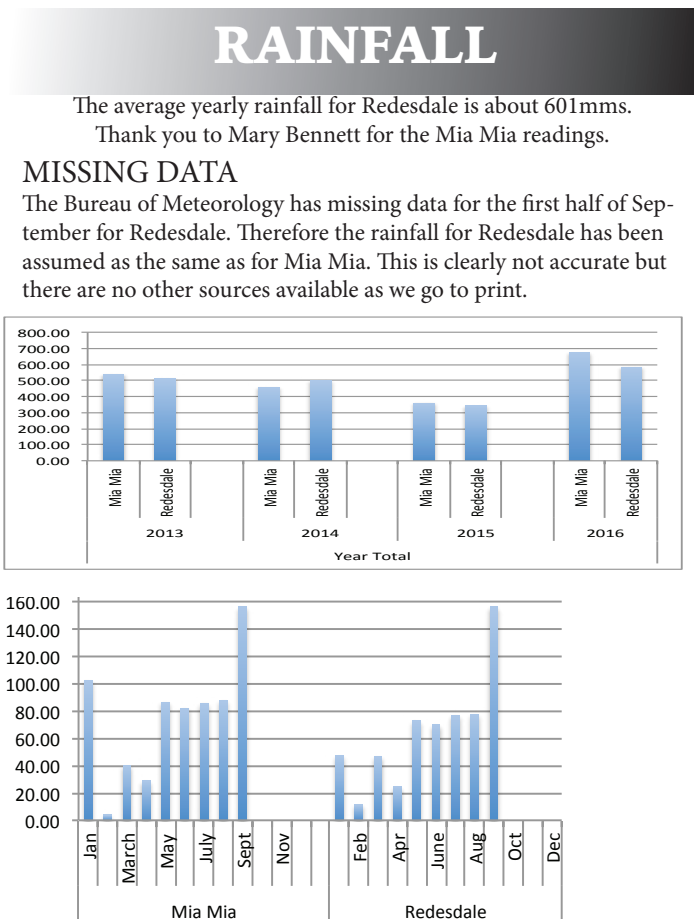
Sutton Grange: 4th Sunday of each month



Morning tea is served at each of these Uniting Churches at 10.45 am and services start at 11 am and finish at midday. If there is a 5th Sunday in the month, services may be found at Kyneton.

CATHOLIC CHURCH

Redesdale: 2nd Sunday of each month 11 am





Your Health!

with

Dr Tim

“Take the pressure down”

“Let’s check your blood-pressure” - now there is a line I’m sure gets the sweaty palm response from a lot of you when you go to the doctor! And therein lies some of the difficulty of diagnosing and treating this common condition - blood pressure is dependent on many variables, including our emotional state - and interpretation of the readings that you are given by your doctor or nurse is no simple matter.

Just measuring blood pressure is a simple enough process - the peak pressure in the arteries is called systolic pressure and is the pressure generated by the heart at the peak of contraction. If the pressure in the blood pressure cuff is above the systolic pressure then no blood in the artery gets past the cuff - if it is below the systolic pressure then blood starts to flow past the cuff again.

Measuring diastolic pressure is about listening for change in the pattern of flow in the artery. Diastolic pressure is the lowest pressure in the cycle of the heart beat, and is important because blood actually flows to your heart muscle during this phase of the cardiac cycle - it reflects healthy relaxation of your heart muscle. A high diastolic pressure means

your heart muscle is not relaxing properly and this has important implications and consequences for cardiovascular health.

Among those consequences are increased risk of stroke, heart attack, kidney disease, heart failure and a variety of other circulatory problems.

Newton’s third law of physics is that for objects that are immobile for every force there is an equal and opposite force acting in balance - this certainly applies to your artery walls as they resist the pressure generated by your heart. The more effort needed by your arteries to resist that pressure, the more likely those arteries are to be damaged in some way.

That’s where medication might come into the “equation” so to speak - by a variety of means blood pressure medication can usually quite safely and effectively reduce blood pressure to acceptable levels - even to normal - with minimal or no side effects. What is more reassuring is that there is overwhelming evidence that in combination with a healthy lifestyle, blood pressure medications or antihypertensives as they are often called, lead to much improved health outcomes in the long term with reduced rates of all of the complications of blood pressure I mentioned earlier. Effective treatment of blood pressure and cardiovascular disease is undoubtedly one of the reasons why we live longer and healthier lives.

Interestingly, some recent studies have suggested that as doctors we should even be aiming for normal blood pressure control in our patients with hypertension - that is 120/70 - or thereabouts at least. Certainly there is an intrinsic logic to this idea that seems to

be irrefutable - who doesn’t want to be told that their blood pressure is normal? Unfortunately again deciding what blood pressure target to accept is a judgement call that requires some experience - judging the current state of a person’s heart and vascular system is integral to that decision. It is possible to over-treat blood pressure, and this is when adverse effects can occur.

Careful monitoring of treatment means not just measuring blood pressure itself, but also monitoring the organs that it effects like the heart and kidneys.

Our understanding of the circulation and blood pressure has improved out of sight since William Harvey the English Physician published his account of the circulation in 1628 “De Motu Cordis”. But the really interesting thing I find is that the causes of high blood pressure at a basic physiological or even a genetic level are still not well understood, and that will possibly keep generations of doctors and scientists busy, to refine our understanding and treatment of blood pressure and circulatory disorders for hundreds of years to come!

Dr Tim Stobie 5422 1397



Campaspe Valley Landcare Group

PREPARING FOR THE FIRE SEASON

**7pm Saturday 5th November
Redesdale Hall**

At this time every year our minds turn to the coming fire season. Few can forget the summer of 2009 and the disastrous outcome of a dry year and horrendously hot summer. 2016 has provided us with a Spring of rampant growth with its own unique set of summer fire risks.

Campaspe Valley Landcare Group is hosting an early evening event to consider our particular circumstances leading into summer.

We have invited some specialist speakers and the local CFA to compare local and broader perspectives. We aim to stimulate useful discussion based on understanding the CFA’s practical know how and insights from the growing area of bushfire research.

The Langley Barfold Fire Brigade will bring some of their equipment, discuss and demonstrate their techniques when faced with a bushfire emergency.

David Cheal will discuss recent research on management of fuel loads around the home and on individual’s properties.

David is a biologist with wide ranging interests and expertise in biological sciences and has a strong background in plant, mammal and landscape ecology. He has worked at ARI (DELWP, Victoria), Parks & Wildlife NT and Melbourne University Botany Department.

David has been heavily involved in advising on ecologically driven fire management, and fire management of public land in Victoria.

Owen Gooding from CFA Melbourne will give a presentation on Living with Bushfire and Biodiversity, including

- Fire Behaviour 101 – the relationship between weather, fuels, drought, and topography
- House loss in bushfire – summary of what we know from 30 years of research
- Relationship between fire and biodiversity in Victoria
- Defining risk, and a look at how we respond as a society and individually
- Managing for fire and biodiversity - defensible space and the zone system

The Bridge: Redesdale Ramblings:

Cyclamen in Central Victoria

Most people know cyclamen as those super-sized potted specimens very popular on Mothers' Day and other special occasions. They hardly look the sort of thing you'd expect to survive in a Central Victorian garden. These florists flowers are highly selected forms of *Cyclamen persicum* which comes from the Mediterranean region but bear little resemblance to the wild species with flounces and frills in colours including red (usually only white or pink in nature). There has been some breeding work done to produce smaller plants without the frills but in plain colours of white, red and pink. These dwarfier forms are ideal for pots and planters and can last for a few seasons.

The wild species are even more long lasting and though we tend to think of them as preferring the cool hill climate, particularly in the Dandenongs or Mt Macedon, there are some types that relish life in Hot and arid (well not at present) Central Victoria.

The one that does particularly well for us is *Cyclamen graecum* which as the name suggests comes from Greece (but also from parts of Turkey) and can be grown outdoors in Redesdale in a sunny position but preferably where it doesn't get any water in the summer when it is dormant. The flowers can suddenly appear in the autumn and are followed by the foliage which can be quite attractive on its own with dark green to silver with markings and shadings to provide interest for months on end.

Strangely enough *Cyclamen persicum* (below)



GARDEN PATCH

is one we find prefers a bit of shade and it does much better in the Shade-house, but we're getting some established in the garden where we hope they will provides some colour through the winter under the trees.

Another one for the Shade-house is *Cyclamen mirabile* (below) which can have new foliage which is distinctly pink or light red when they first expand, slowly fading to green with darker patterns on the surface and often bright red underneath.



The most common autumn flowering species is *Cyclamen hederifolium* (below), the "Ivy-leaved Cyclamen" which used to be called "*Cyclamen neapolitanum*" and you may still find it called such in some places. It is mostly pink or white but some forms can be almost purple-red and these forms are becoming more common overseas.



As these flowers fade *Cyclamen coum* (below) starts to flower in the middle of winter.



The flowers are a little shorter and dumper than the former and are mostly pink or white with a pink "snout", the point where the petals curve back in that typical cyclamen poise. These two seem to also require a bit more shade than the Greek species and in cooler climes can form a carpet of foliage which can be so varied that you wouldn't mind it if they never flowered!

Cyclamen are mostly grown from seed as they don't multiply from the tuber the way dahlias or potatoes do. Some do produce protuberances that could be cut off and grown as cuttings but this is not a reliable method of increase. Seed can be sown from your own plants or bought from one of the specialist companies or from the

Cyclamen Society or other Plant clubs which have annual seed exchanges. If collecting your own, it pays to tie a muslin bag around the seed pod when it is nearly ripe because as soon as it opens it is very attractive to ants and wasps which can empty it before you realise it! Soak the seed in a saucer of water to which a drop of dishwashing liquid has been added (this helps break down the surface tension and helps the seed absorb water to help trigger germination). Sow the seeds on top of a pot of potting mix to which some grit or coarse sand has been added. Cover with a centimetre or so of fine grit which helps water to percolate through without washing out the seeds. The tiny seedlings will gradually appear and should be allowed to grow on for a year before separating out the little tubers into their own pots and can be planted out in their second year when they are a bit sturdier.

There are many species of cyclamen and if you can grow a variety you can have flowers in virtually every month of the year!

Fermi de Sousa

The Redesdale Rock Gardener



The Bridge: GARDEN PATCH



Hello Dear Garden Enthusiasts!

Lady Bombay here again.

Whilst I splendour in this grass of spring time, I am wondering where I have placed my "pince nez" spectacles. Last recollection of them was as I was pulling the ride-on mower out of the mud with the Bentley. Equally problematic as I couldn't see to drive, I

backed into the large rocks edging the rose garden. An absolute damage of a crunch to my beloved 'get-about' Bentley. Clearly enough for the insurance company to come and purvey the situation.

Thorn, the gardener has just knocked on the back door to tell me that the spectacles of the moment have been retrieved from the mower's catcher a little worse for wear. Oh dear, the chain is still around my neck. I think this episode I will let slip by without Lord Bombay's *au fait*.

Now, onto the garden. A picture of the Monetesque plumes. An autumn and winter of hard work is providing me the satisfaction of a job, well done.

Self-sown carpet daisies, eciums a' plenty, the may bush hedges abundant with white. Even the paddocks that I look at from my office are a purple overload of Patterson's curse. If it ceased raining for a 24 hour period, that will be zapped henceforth. Also- note to oneself - no more purchasing plants for the rest of this season. The warmer months are fast approaching, so I will divert my attentions to water features. Be it small or large, the sound of trickling water in the summer months can set the scene of tranquillity. Not too good for those of you with incontinence issues. I have two "make it easy" fountains to make;

Bombay and a Bex

Send in your questions for Lady Bombay Sapphire to bridgeconnection.editor@gmail.com

Dear Lady Bombay,

I am at the end of my tether. Trying to start a garden particularly as I have 3 children under 6 is virtuously impossible. Plants are either knocked or flattened by their tricycle and bicycles. Help! Distraught Gardener.

Dear Distraught,

Interlocking wire fencing is the answer. You can buy it in rolls quite inexpensively. Use star pickets to keep the fence in situ. Think of the little darlings as kangaroos. Cute but destructive.

Lucky for you, dear, that they are fast approaching the right age for you to have the most beautiful garden in the area.

Two magic words. BOARDING SCHOOL. They may not be happy, but the garden will be.

Salutations,

Lady B

1/ a large urn with a reticulating pump will give the most instant of results. Make sure that the electricity source is as close by as possible.

2/The round cattle trough in hardened plastic. Any size you like. Cheap as chips and long lasting. Either hedge around it, or collect those old bricks that are laying around.

Initially when I bought my cattle trough, I planted buxus honeysuckle, which was a great success for many a year. Until the day of 46 degrees, and it fried to a crisp of fatality.

Thorn, the gardener came up with the idea of building a brick wall around the outside of the trough. He's an absolute whizz at walling, and I placed a magnificent terracotta urn in the centre of the pond with the water ever-so-delicately cascading down the sides. Sheer bliss!

Honestly, I think I could fool the best of the landscaping experts.

Enjoy the season.

Old wives believe that you will have good luck all year if the first butterfly you see is white.

Time for mothers ruin,

Lady Bombay



NEEDED: Any *old greeting cards* to recycle into new ones

Ring Janette for pick up. 0407 004 728.



Be Fire Ready.

THE REASONS ARE BLACK AND WHITE.

Fire Action Week
The Right Time To Prepare

1. Plan what you'll do in the event of a fire, talk to your household and know where to access information on high risk days.
2. Keep grass short. Fire can ignite and travel quickly through long grass.
3. Get rid of dry grass, leaves, twigs and loose bark around your home.
4. Remove or prune shrubs near windows and well away from branches of mature trees.
5. Cut back overhanging tree branches close to property – no branches within 10 metres.
6. Keep gutters and roof areas clear of leaf litter (if you are physically able to).
7. Remove all materials from around the home that could burn, such as boxes, furniture and woodpiles.

emergency.vic.gov.au | VicEmergency app - launching November

FireReady 
Authorised by the Victorian Government, 1 Treasury Place, Melbourne

Major Mitchell's Journey through Central Victoria 180 Years Ago

It would have been great if Major Mitchell, on his journey of exploration in 1836, had had the foresight to avoid, 180 years later, Grand Final weekend! The competition offered to the three day "Recognition of Major Mitchell's Journey, 180 Years On", by the footy Grand Final of 2016 certainly diminished the numbers of people attending the exhibition of Eliza Tree's "Major Mitchell's Journeys through Australia Felix" on the Saturday of the Long Weekend, but the numbers and the enthusiasm of participants on the Friday (Forest Creek walk) and Sunday (Newstead to Redesdale drive) were undiminished. Even the weekend's copious rain held off - mostly!

Friday's walk along the Forest Creek in Happy Valley, Castlemaine was prefaced by local artist and expeditioner, Eliza Tree, giving the participants some context for Major Mitchell's 1836 officially-sanctioned journey where he was completely enchanted by the beauty and productivity of the land of what is now Victoria.

She said, "We now understand that Mitchell's descriptions of land 'resembling an English park' were of Indigenous cultural and cultivated landscapes, the work of the many clans and tribes inhabiting (central) Victoria.

When Major Mitchell wrote 'Certainly a land more favourable for colonisation could not be found. Flocks might be turned out on its hills, or the plough at once set to work in the plains. No primeval forests required first to be rooted out, although there was enough wood for all purposes of utility...' clearly, he was describing the fire-stick farmed and cultivated homelands and Country of Aboriginal Australia, revered and cultured by the Dja Dja Wurrung and Daung Wurrung Peoples, of the Kulin Nation, for many millennia."

On Saturday, Eliza opened her gallery crammed with her visual interpretations of the Major's journey and the subsequent Landrush by squatters. In the short 15 years between the Major's journey and before the Goldrush, all bar two tiny remnants of the land of Victoria had been "taken up" by squatters and the landscape irrevocably altered by the cessation of fire-stick farming, the introduction of hard-hoofed animals, overgrazing and weeds. Eliza documents in her paintings "the complexity and extensive nature of Indigenous occupation and life-ways, which were often damaged or destroyed with the arrival of explorers and squatters whose hunger for new lands annihilated any concern for the previous occupants.

The indigenous population was greatly decreased by two bouts of smallpox and their weapons were no match for the invaders' firearms."

The final event in the "Recognition of Major Mitchell's Journey" through this area was a bus tour starting at Newstead and ending at Gibbon's Bridge, Sutton Grange on the exact day, 180 years earlier, that the Major's party travelled that way on its way back to Sydney to broadcast to the world the potential pastoral riches of Victoria. The Major wanted to be the first with the news!

Watching an unusually full Muckleford Creek in full spate; over a picnic at Expedition Pass; scrambling up Dog Rocks on Leanganook (Mt Alexander); and perched on a rock over the Myrtle Creek, participants learned to "read" the landscape in new ways. Barbara James, Campaspe Valley Landcare member, commented that "The huge value of travelling this route with Eliza is that she is very familiar with the primary sources of Major Mitchell's journey and the subsequent Landgrab by European settlers,

continued over page

Redesdale Recreational Reserve Committee Inc

Chairman's Monthly Report

November-2016

Hi Redesdalian's

Exciting times are upon us, by the time you get to read this report several events will have taken place, namely the CFA field day the annual Redesdale Festival and lastly the slab at the pavilion will be completed.

I have included photo's of work being carried out on the slab, Well done RRRC Members!

An expression of interest has been submitted for the Shade Grant Program and we will know if we have been successful in the New Year.

As part of the business plan being prepared by the Council-appointed consultant, several members of our committees visited Charlton to check-out the RV ensuite. A very informative conversation was had with the Business Consultant, Park Manager, Buloke Council and Tourism and the discussions confirmed business opportunities for the Reserve and retail precinct.

This is all for this month, and I look forward to seeing you all enjoying yourselves at the place to be the Redesdale Festival.

Les Pocock.

Redesdale Recreational Reserve Committee Inc



Above: Getting ready for the concrete pour at the pavilion.



Below left: Gary Prendergast and Les Pocock inspecting the diggings.

Below right: meeting the people of Charlton regarding RV ensuite.



and also has the visual imagination of an artist so she can enlighten those of us who have not put so much time into research and who struggle to envisage what the landscape might once have looked like. We really do now have a new ability to interpret what we see in sometimes quite familiar landscapes."

Eliza's exhibition is available for private viewing for the next month. Appointments are essential and can be made by calling 0409209707. Further information, including a recommended bibliography, is available on www.major-mitchellexhibition.com

Clare Clayton



Major Thomas Mitchell



Photo: Samantha Ward

Left: Some of the participants on the "Major Mitchell's Journey 180 Years On" excursion perch on rocks by the Myrtle Creek as Eliza Tree helps them develop a new way to "read" landscape

RECIPE OF THE MONTH

17

Harlequin Omelette - Roger Vergé



9 eggs
1/2 kilo very ripe tomatoes
500g fresh spinach
75g grated Gruyere cheese
2 cloves garlic
Preheat oven to 120 Deg C

Pinch of Thyme
8 tbs whipping cream
8 tbs olive oil
nutmeg
salt and pepper

Wash spinach. Plunge tomatoes into boiling water for 5 secs, refresh in cold water then peel. Cut tomatoes in half, expel juice and seeds and chop. Peel 2 cloves garlic.

In 2 tbs oil cook chopped tomato with thyme and pinch of salt.

In another pan, in 3 tbs oil cook garlic spinach and salt. When all moisture has evaporated from tomato pan and spinach pan remove garlic and allow to cool.

Get out 3 bowls and crack 3 eggs into each bowl. Into first bowl add spinach, 3 tbs cream, nutmeg, salt and pepper and whisk.

Into second bowl add tomatoes and 2 tbs cream, salt and pepper and whisk. Into 3rd bowl add Gruyere, 3 tbs cream, salt and pepper and whisk.

Oil the inside of a terrine lavishly. Pour in tomato mixture. Stand in a bain-marie half filled with water and cook in preheated oven for 15 mins. Then pour in cheese mix very gently and cook for a further 15 mins. Finally pour in spinach mixture and cook for 20 mins..

Remove from oven and rest for 15 mins. Then turn out onto a dish and serve hot, cutting into slices or wedges according to the dish shape.

This can also be served cold as a first course sprinkled with olive oil.



After a year of The Redesdale Hotel re opening. A few members of the community have gotten together and are starting the Redesdale Hotel Social Club. Memberships are \$30 per year, and you will receive your own social club stubby holder

Other benefits of becoming a member:
-Friday Night Social Night, including raffles and other members benefits
-Organised events including golf days, Wine/Cider/Beer tour, AFL games, Darts Comps, regular 'Sunday Sips' and much more.



Classic Country Pub Dining

For bookings
(03) 4405 0601



Monday - Closed

Tuesday - 4pm to 8pm

Wed to Sun • Lunch 12noon - 2.30pm

• Dinner 6pm - 8.30pm



redesdalehotel



The Redesdale Hotel

The Redesdale Hotel

2640 Heathcote-kyneton Road
Redesdale, Vic, 3444

info@theredesdalehotel.com.au

www.theredesdalehotel.com.au

Woops! Bendigo Mayor forgets Bridge Connection at the CNAV Conference



Your Bridge Connection editors, Regina Bennett and Kathy Hall, as well as treasurer Terry McKenzie, visited the annual conference of Community Newspapers Victoria (CNAV) when it was held in Bendigo last month.

The conference was opened by Mayor, Rod Fyffe (above), who proudly named all the community newspapers in the City of Greater Bendigo, but forgot us! As you can imagine - we reminded him of his mistake!

It was a little disappointing especially as we had just received a generous grant from CoGB and had been in lengthy correspondence about the need for local government support for local newspapers!

The keynote speaker was Superintendent Matthew Ryan (below) who heads the Victoria Police's Family Violence Command. He gave an impressive and moving speech in which he cited the statistic that there is an episode of family violence every 8 minutes in Victoria which amounts to 80,000 episodes per year - and only one in 6 events are reported to police. He talked at length about how his unit has been set up and the lengths that police are now going to to select recruits who have the right attitude to domestic violence and to women in general.



Kerry Anderson, continued from page 14:



Farmer turned entrepreneur, Phil McConachy

Young people have so many new career options in rural areas. Change is happening all around us if we take the time to stop and think about it. Agricultural machinery has been revolutionised and now operates on GPS technology. A growing number of people are self-employed offering professional services to a global market from rural home offices. While our rural towns are an important hub for surrounding communities, the streetscapes don't have to serve the same purpose as in the past. The important thing is that we can access essential services in some way or another, and that we have a vibrant hub as a social gathering place.

Kerry Anderson is passionate about rural business and author of Entrepreneurship: It's everybody's business!

www.kerryanderson.com.au



The master of ceremonies was Michael Smith (above) who currently writes for the Herald Sun. He has been a media advisor in the Kennett and Howard Governments and is a media and communications advisor during emergencies and disasters. He is passionate about community newspapers and contributes to the Castlemaine Mail and Chewton Chat.

The advantage of your newspaper editors and committee members attending these conferences is enormous. We are able to touch base with other community organisations and share knowledge and contacts. We also take solace from the fact that our struggles are shared!

There is no chance that printed community newspapers are going to disappear. Their popularity is increasing as the larger newspapers wane. The written support of readers through letters to the editor is very highly valued.

Kathy Hall and Regina Bennett

EUROPEAN WASP CONTROL

Firstly I am not a scientist or entomologist just a keen observer, and inventor of SHamp featured on ABC's New Inventors www.shamp.com.au I live in central Vic. on 2 acres of bushland and have been studying the habits of the European wasp for 10 + years and believe all methods tried so far to get rid of them i.e. baiting with poison, to take back to nest, the parasitic wasp (1997 trial) to eat lava has failed. I have also tried other methods when nests have formed but so far none have worked apart from finding and dusting them!

I believe the main component in the cycle is the Queen which is overlooked! It seems that waiting for nests to be formed then take action is what's in everyone's mind

I have developed a method to catch the queen before she makes a nest. My idea is cheap, environmentally friendly, recyclable and safe, easy to make and most household will have ingredients for bait!

For this idea to work it needs people power, if every household put out 5 traps the number of nests formed would be reduced greatly.

As most nests die off during winter people become complacent because there are no wasps around until it's too late! My idea starts in spring

The queen comes out of hibernation in spring with two priorities in mind #1 to build nest and #2 feed herself which is mostly carbohydrates until she has workers take over.

My method uses 5 , 1.25 lt soft drink bottle with 3 holes aprox .10mm diameter , about 150mm from bottom of bottle and a bait made from 6 table spoons honey, dissolved in 2 cups hot water, add 2 tea spoons pure vanilla essence, 35% alcohol (Queen red label) divide between 5 traps ,top up with water to just below holes, replace cap and hang about 2m off ground .The traps need a little tending until Jan. meaning when checking traps give a shake to let a little lure dribble and out once full removing catch, reusing bait and topping up with water .This can be done 3-4x before lure may need replacing

When traps stop catching replace with fresh lure

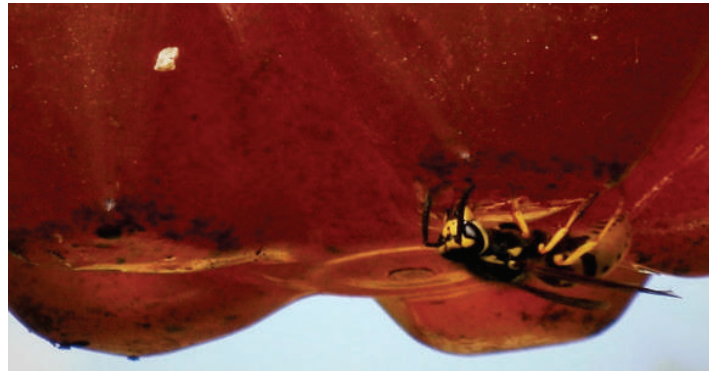
In 2015 season catch was 1360!

I have left traps out over wasp season Jan- May and have caught aprox. 6000+ workers! As I had no wasp problems eating outside barbys ect, my method may also keep wasps from attacking bee hives, grape vines and other fruit that may be affected, but this only a thought and has not been field tested

And finally I am not intending to gain financially from this idea its FREE to anyone who wants to try!

Laurie Nicoll

laurie@shamp.com.au Ph 03 54 232 412



Spring is the time to catch the QUEEN wasp before she makes a nest using a simple environmentally friendly method.

Use a 1.25 L soft drink bottle with 3, 10mm holes, 150mm from bottom of bottle

Make up a solution 6 tablespoons of honey in hot water with a 2 teaspoons pure vanilla essence 35% alcohol this will do 4-5 traps, divide bait between traps, top up with water to just below holes replace cap and hang in a sunny spot in garden, near water. Fruit trees with curly leaf is a good place, bait will take a week or so to activate. Shake every few days to let bait dribble out .keep in place until January. Strain out when full, reuse and top up bait with water. Replace bait every 4-5 weeks

further info Laurie Nicoll
laurie@shamp.com.au

THE HOUSE GALLERY EXHIBITION

On Sunday October 23rd, yet another artistic event occurred in Redesdale. Ray Ellis and Joyce Hopewood-Knight opened their wonderful exhibition at the House gallery next to the Rural Cafe. What a huge boon it has been to the area since Joyce and Ray bought the cafe after the first Redesdale Festival in 2013!



The standard of Joyce and Ray's work is extremely high and they have very different styles from each other. Ray's landscapes are soft and invitingly familiar to those of us who are lucky enough to live in a rural setting. Joyce's studies are vibrant, colourful and lively depictions of still life, plants and landscapes.

The opening was catered for by the Rural cafe and the food was delicious and very well presented. There were many visitors from all over the state and there were quite a few sales taking place. It's well worth a visit to the gallery - at any time!



Yvonne McGrath proudly shows the way to the House Gallery Exhibition Opening

**KEEN TO
CUT
YOUR
HOT WATER
BILLS
BY 75%
???**



Solar Power Solar Hot Water
Heat Pump Hot Water
On Grid & Off Grid
Domestic & Commercial
energysolutions@breaze.org.au
03 4309 4027

Mica Grange

Open each weekend from 22 October to 20 November 10am - 4pm
Open Cup week October 31 - November 4

Entry \$5 - Morning and Afternoon Tea
Sculptures, Plants, Garden Art and Preserves

Group bookings and lunch available during the week
www.micagrangecom.au

Contact 03 5474 8261 | email: micagrangegarden@gmail.com



Mica Grange

Classical Guitarist Sergio Ercole and the
Victorian Chamber Ensemble performing
the Vivaldi Guitar Concerto in D at Mica
Grange on Sunday, 27 November.

Mica Grange

Spring Sculpture Exhibition and Open Garden

Featuring 16 artists and over 60 exhibits

Merging the wonders of art with the beauty of garden

373 Faraday Sutton Grange Road, Sutton Grange, Victoria 3448



Unique, beautiful, peaceful...

Give some *luxury* this
Christmas...

Perricoota Vines Retreat & The Vines Lakehouse

Luxury spa accommodation

Lakeside or Garden Spa fully self contained villas

• Weddings • Ceremonies • Receptions

Conferences & Functions



perricootavines
retreat

400 Perricoota Road, Moama
P. (03) 5482 6655

E. enquiries@perricootavines.com
W. www.perricootavines.com

CAMBIA
HAIR STUDIO

Louis Soncin
0411 411 407

By Appointment only

66a Piper Street, Kyneton Vic 3444



Come and try our coffee at the
RURAL CAFÉ



In the centre
of Redesdale

Now serving Norma's
famous apple pie!

Open 8am to 5pm

A great place to stop for all day breakfast, lunch, excellent coffee
and fresh cakes.

Phone: **03 5425 3271**

BRIDGE CONNECTION COMMUNITY NEWSPAPER

Advertising Rates/Sizes

Size	Height x Width	Price per issue	12 Editions
Business Card	90mm x 55mm	\$25	\$250
Quarter Page	130mm x 90mm	\$50	\$500
Half Page	190mm x 130mm	\$95	\$950
Full Page	270mm x 190mm	\$175	\$1,750

Colour Advertisements plus 20%.

Please send editorial or advertising copy to:
bridgeconnection.editor@gmail.com
 or by post to **866 Coliban Park Road, Redesdale, Vic 3444.**
 For other editorial enquiries, please phone **0407 116 899**

Bridge Connection Distribution

800 Copies printed and distributed to Redesdale Mia Mia Region, including Barfold, Baynton, Derrinal, Elphinstone, Glenhope, Kyneton, Langley, Metcalf, Sidonia and Sutton Grange

Disclaimer: The Bridge Connection Inc. Committee wishes to advise that the views or remarks expressed in this publication are not necessarily the views of the volunteer Bridge Connection Inc. editorial or production team and no service or endorsement is implied by the listing of Advertisers, sponsors or contributors. Although every effort is taken in reproducing and printing advertisements correctly, we take no responsibility for errors.

Managment Committee

President : **Mary Bennett** (03) 5425 5551
 Secretary: **Regina Bennett** (03) 5425 5402
 bridgeconnection.secretary@gmail.com
 Treasurer: **Terry McKenzie** (03) 5425 3262
 Magazine: **Kathy Hall & Regina Bennett** (03) 5425 3272

Tax Returns BAS Super

KMATAX

& accounting

Open late and Saturdays

43B High Street, Kyneton

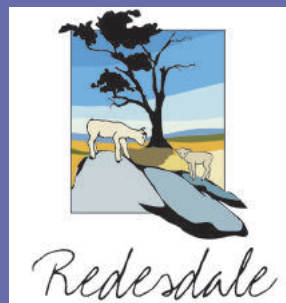
ph: **5422 3178**

mob: **0498 389 184**

www.kmatax.com.au



KMATAX & Accounting
is a CPA Practice



**IT'S TIME TO RENEW YOUR REDESDALE AND DISTRICT
ASSOCIATION MEMBERSHIP OR TO JOIN UP FOR
THE FIRST TIME**

**Membership applications can be downloaded from the
Redesdale website: www.redesdale.net**



The catering was fantastic at the opening of the House Gallery Exhibition on Sunday 23rd October - thanks to Liz and her team from the Rural Cafe, Redesdale.

SUBSCRIPTION

If you are unable to receive a **RELIABLE** free delivery of the Bridge Connection, you can subscribe for **postal** delivery for \$25 per year.



**Please contact the treasurer on:
(03) 5425 3262 or email:
bridgeconnection.secretary@gmail.com**

The Bridge Abroad



proudly sponsored by Bendigo Travel
and Cruise 5441 8811

Bendigo
Travel & Cruise Centre

A prize at the end of next year!

Bendigo Travel and Cruise have sponsored this regular section. Next time you go away (Australia or overseas) send us a pic of you or a friend holding a copy of the Bridge Connection and we will enter it for a prize



Deb Agnew at the Pinnacles Desert, Nambung National Park, Western Australia.

"The Bridge Connection enjoyed the trip to the Pinnacles but it was lucky not to get blown away in the sand storm we experienced."

A HISTORY OF REDESDALE



Ken James and Noel Davis

Author, Ken James, who launched the Redesdale book at the Art Show opening is pleased with the number of books he sold. "There were 26 copies left unsold - so as I mentioned in my speech, I left them with Andrew Campbell for the CFA to sell for \$40 (rather than \$35) and they keep the extra \$5 per book. I also left 7 copies with Clare at Aesops Attic." Noel and Ken produce these books for the benefit of local communities and for prosperity. The income received covers printing costs and expenses.

Want an Accountant you can talk to and build a working relationship with?

- Let's streamline your financial management so you can focus on running your business
- From bookkeeping through to tax returns and compliance, I'll help you to manage it all
- Individual Tax Returns from \$110.00
- I am a reliable, local professional who can visit you at your home, farm or office

*Call me for a chat to find out
how I can help you.*

Christine Greene B.Bus (Acc.), Tax Agent

T: 03 5422 6460 M: 0481 101 455

E: contact@mrta.com.au

www.macedonrangestax.com.au



MACEDON RANGES
TAX & ACCOUNTING

TAX SPECIALISTS & BUSINESS STRATEGISTS

A good life deserves the best farewell

**WILLIAM
FARMER**
FUNERAL DIRECTORS

Andrew and Heather Hampton

151 McCrae Street Bendigo
12 Victoria Street Eaglehawk

P: 5441 5577

www.williamfarmer.com.au

A tradition that continues...

Fabulous art show and festival !



Sharon and George Marshall receive their voucher for a weekend at Perriota Vines Retreat from Angela Meek of Bendogo Travel and Cruise -generous sponsor of the Bridge Connection and "Bridge Abroad".
Picture courtesy of: Lyn Ingles -*blue pencil publishing*-



The Country Womens Association attracted good crowds.

The Hall Committee kept the nibbles coming at the art show opening! Left to right: Yvonne McGrath, Norma Barker, Sue Newnham, Janette Johnson, Val Ford, Alwyn Charville and Carolyn-Anne Boyd. Picture courtesy of: Lyn Ingles -*blue pencil publishing*-



There was a lot of interest in the tent displaying the 150 year quilt project commemorating the Redesdale Bridge.



Urthley Organic's colourful and fragrant display.

Fabulous art show and festival !



Left: Hilary Jankelson of Boonderoo Walnuts offers tastings to visitors.
Below: Sandra Aitken of Barfold Estate (Barfold Olives in the background).



Below : Boonderoo Walnut Man displays a bag of his nuts.



Mia Mia's Wendy Hulls talks footwear with Adele of Adele's Shoes.



Kevin Foley's spectacular studio in Mia Mia.

Jorja Bennett accepts her Kyneton Vet Hospital prize for best Pet Pals entry.

Picture courtesy of: Lyn Ingles
-blue pencil publishing-

At the festival on Saturday, Colleen kept on spinning!



Su Mitton amongst her colourful paintings at her Barfold studio.

Elphinstone

Post Office & General Store

*'In the heart of the
Elphinstone community'*



- Newspapers/ Magazines
- Origin Gas Bottles
- Bread • Milk & Groceries
- Postage Services

*'The General Store where
community meets business.'*

Gill & Dave (03) 5473 3200
9 Bateman Street, Elphinstone

THE 2016
Malmsbury
Village Fayre
SUNDAY
20 NOV 2016

COME ALONG FOR A GREAT
DAY OF FUN, FOOD & WINE

Malmsbury Botanic Gardens via Calder Freeway, Malmsbury
Gold coin entry 10am-4pm
Proceeds to local community organisations
Contact Helen 0417 312 098 or Sandra 5423 4225

www.malmsburyvillagefayre.org.au

SPONSORED BY: LISA CHESTERS, Malmsbury Shire Council, Malmsbury Rotary, Malmsbury Chamber of Commerce, Malmsbury Community Centre, Malmsbury Primary School, Malmsbury Secondary School, Malmsbury High School, Malmsbury College, Malmsbury University, Malmsbury TAFE, Malmsbury RSL, Malmsbury Lions Club, Malmsbury Scouts, Malmsbury Girl Guides, Malmsbury Netball Club, Malmsbury Football Club, Malmsbury Cricket Club, Malmsbury Golf Club, Malmsbury Tennis Club, Malmsbury Badminton Club, Malmsbury Table Tennis Club, Malmsbury Chess Club, Malmsbury Book Club, Malmsbury Gardening Club, Malmsbury Fishing Club, Malmsbury Cycling Club, Malmsbury Walking Club, Malmsbury Running Club, Malmsbury Horse Riding Club, Malmsbury Archery Club, Malmsbury Badminton Club, Malmsbury Table Tennis Club, Malmsbury Chess Club, Malmsbury Book Club, Malmsbury Gardening Club, Malmsbury Fishing Club, Malmsbury Cycling Club, Malmsbury Walking Club, Malmsbury Running Club, Malmsbury Horse Riding Club, Malmsbury Archery Club.

REDESDALE

General Store



Fully Electronic
Postage Service

Come in for some
great tasting...



Banking
Facilities



Full alcohol
licence and
bottle shop
with local
wines.



Takeaway
Food Service



Fuel
& Oil



"Great service in a country
environment from
Dino and his friendly team"

OPEN 7 DAYS

DINO

Phone (03) 5425 3154
2609 Main Road, Redesdale

RK Earth

Ross Knight Earthmoving

Servicing Mia Mia, Redesdale, Heathcote & District



**'Dam construction, erosion works,
building sites and general earthworks'**

Over 40 years experience in the district

Phone **Ross 0428 843 988**

or the office: (03) **5425 5506**

Email: info@rkearth.com

Web: rkearth.com