



ISSUE NO. 85 JUNE 2017

FREE

For the Mia Mia- Redesdale Region including:  
• Heathcote • Derrinal • Glenhope • Baynton • Sidonia  
• Barfold • Langley • Sutton Grange • Elphinstone • Kyneton

# BRIDGE CONNECTION COMMUNITY NEWSPAPER



facebook.com/RedesdaleMiaMia

On behalf of our customers we've committed \$10,000 to the proposed Heathcote Dementia Village.

Bendigo and Adelaide Bank Limited, ABN 11068049178 AFSL/Australian Credit Licence 237879. S48951-10

Heathcote & District  
**Community Bank®** Branch

 **Bendigo Bank**

bendigobank.com.au/heathcote 



In November 2016, the Redesdale and District Association invested in some drone shots of our local area to be used in the upgrading of the *redesdale.net* website.

This is one of the amazing photos.

## Kyneton Toyota



**TOYOTA**

"We are Proud to support  
Bridge Connection  
& the local Macedon Ranges Community"

*JUST OFF THE FREEWAY!*

"Proud to have LOCALS in the  
Drivers Seat"



*Oh what a feeling!*

kynetontoyota.com.au | 03 54 210 210



15 mins from  
Melbourne  
Airport.

## Kepala Pet Resort

LUXURY ACCOMMODATION FOR PETS

Kepala Pet Resort provides five star luxury accommodation for a wide range of pets including cats, dogs, rabbits and guinea pigs.

We provide overnight, weekend and long term accommodation for all breeds of cats and dogs. Our friendly and experienced staff, understand the needs and expectations of both customers and their pets and therefore are dedicated to ensuring a happy, safe stay for your pet.

**Kepala Pet Resort & Canine Country Club**  
**55 Edwards Rd Diggers Rest**

**For more information: (03) 9740 1272**

**Email: [info@kepala.com.au](mailto:info@kepala.com.au)**

**[www.kepala.com.au](http://www.kepala.com.au)**

*Kyneton Veterinary Hospital*  
*Where animal lovers heal*  
*Call us today on*  
**035422 1099**  
*67 High street Kyneton*



**The BRIDGE PET PALS**  
**proudly sponsored by**



This amazing quilt by Linden Lancaster won first prize in the "Made in Australia: Fauna and Flora Challenge" at the Australian Quilt Convention at the Melbourne Exhibition Building in April.

**Send us a picture of your very special pet and a few words to describe him or her and why you love your pet so much. Send them to [bridgeconnection.editor@gmail.com](mailto:bridgeconnection.editor@gmail.com)**

## BIRD QUIZ with NIGEL HARLAND



Last month's bird was the White-browed Scrubwren. It can often be found in gardens, often living under the house. I was outside doing some weeding today and one didn't seem to be concerned and came within a meter of me! It lacks the colour of the Fairy Wrens but still has some character. They are mainly forest birds feeding on the ground or in low vegetation, but they seem to have developed a liking for more domestic surroundings. Our bird for next month is fairly common – good luck.

*Nigel*

Contact us on with your guess about which bird this is above and **WIN a \$20 book voucher** from Aesop's Attic bookshop, Kyneton. Send answers to [bridgeconnection.editor@gmail.com](mailto:bridgeconnection.editor@gmail.com) or phone or text to: 0407 116 899



Boof (Abramowski) will accept licks from anybody - or maybe the calves are whispering something to him, like "better not go too near our dad, Boofy!" Or maybe boof is looking at that strange red kangaroo?

## Editorial

Hello Dear BC Readers,

What a beautiful autumn we are having. The lack of strong winds and mild weather has seen the colours of the deciduous trees glow in our landscapes. We are always impressed by how much activity there is in our area. This edition is chock full of notices and advertisements for events in Redesdale and surrounds.

Don't miss the Winter Wine and Dine event in Redesdale on the Queen's Birthday weekend. See page 11.

There is an important meeting for all the community on July 23rd at 3 pm at the Redesdale Hall to discuss the development of our precinct - notice on page 7.

For those of you who want to improve your health and fitness, think seriously about joining the Bootcamp. They seem to have a lot of fun! See "Changing shapes" on page 13.

On page 10 you will see a cry for help regarding connectivity with phone and wifi. Regional Development Victoria are on the case but would like some real life examples of connectivity difficulties to influence decision making for improvement in rural areas.

Stay warm and safe, Kathy and Regina.



Regina Bennett



Kathy Hall

### Co-Editors

Kathy Hall

Regina Bennett

Ph: 0407116 899

e: [bridgeconnection.editor@gmail.com](mailto:bridgeconnection.editor@gmail.com)

## CONTENTS

Regular articles	Page	Special articles	Page
Advertising rates	22	Changing Shapes - Bootcamp	13
Bird Quiz	2	Eucalypts of Mt Alexander	20
Bridge Abroad	23	Karaoke	16 \$ 17
CFA News	24 - 25	Kerry Anderson	10
Church Services	12	Obit. David James	11 & 12
Dr Tim	19	Poem by Nancy Begg	22
Editorial	3	Winter Wine and Dine	11
Farmers' markets	9		
Garden Patch	14 & 15	<b>Notices</b>	
		Baynton and Sidonia Landcare	
General knowledge quiz	7	AGM	8
Hall Happenings	21	Bootcamp	27
Langley Primary School	17	Camp Oven Cook off	21
Letters to Editors	11	Community meeting	7
Local Contact List	27	Connectivity problems	10
Pet Pals	2	Mia Mia Big Sing	16
Politics	8 & 9	Suicide prevention forum	5
Quote of the month	8	Sutton Grange Mid Year Feast	21
Rainfall	12		
Recipe of the month	22		
RRRC Chairman's report	21		
Subscription	26		
The Munro Letters	4		
What's on in Heathcote	7		



**DEADLINE**  
20th of each month

## Proudly printed in Kyneton

Castlemaine, Kyneton & Gisborne  
**CopyCentre**  
Printing together for our community

Design & Pre-press  
Plan Scanning, Finishing Services.

*Not just a Copy Centre...  
we are so much more.*



[www.windarring.org.au](http://www.windarring.org.au)

58 Mollison Street  
Kyneton  
03 5422 2400

## Redesdale Hall FOR HIRE

Ammentities are available for catering, meetings, weddings and club or family celebrations.

Please phone

**Carolyn (03) 5425 3194** for more information.

### Redesdale Hall Activities:

- 1st Monday monthly, 10am or 4.15pm, Bridge Connection Committee meeting
- 2nd Tuesday monthly, 1pm - Hall Comm. Meetings.
- 2nd Tuesday monthly, 7 pm - Rec. Reserve Meetings.

### Roaster for Hire

Commercial sized roaster available for hire from the Redesdale and District Association.

\$75 for members and \$100 for non-members.

(Free hire to Hall, Rec. Reserve Committee, and CFA)

Phone **0418 130 206.**





# THE MUNRO LETTERS

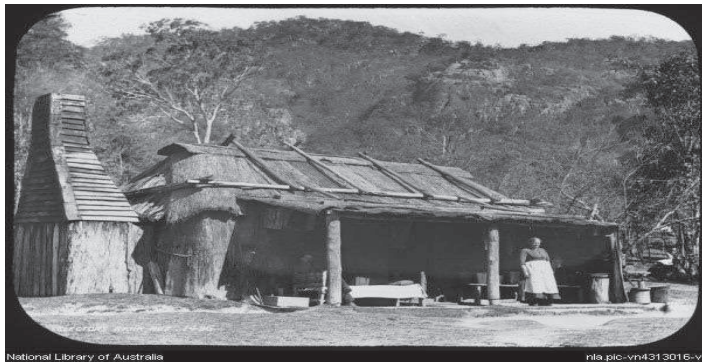
## Episode 4

**We continue the letter from David Munro to brother Alex in Scotland.**

**We have received information that this letter was written in 1842 - not 1848 as stated in previous episodes. We have also been informed that Munro may have been spelt Monro and we would be grateful if anyone has information to back this up. Eds**

The great majority of the trees are what the colonists call white gum because its bark is a smooth white colour even to the extremities of its branches; the foliage is scanty and its tufts are of a dull green. In other places the country is much more open, and the eye ranges over large grassy tracts destitute of large trees, but dotted over with dark coloured cassuarina with its drooping hair-like leaves, through which the breeze makes a melancholy sighing, and the graceful mimosas perfume the air with their perfusion of delicate yellow flowers.

Through the scenery of this sort our road, or rather our track lay. Our horses' heads were turned towards the blue range of hills which bounded the landscape to the north and consists of Macedon (the highest point) and several spurs which branch off in different directions and are named after it; the Mount Macedon Range. At 9 in the evening we arrived at our night's quarters, a cottage of upright slabs of wood with a bark roof termed The Bush Inn.



The distance we had done was about 35 miles. In this distance we crossed 2 streams of water flowing in deep glens and rolling down a considerable body of water. The first in particular we had considerable difficulty crossing and our horses feet hardly touched the ground. For 2 or 3 days before there had been very heavy rain and this had saturated the ground and made it very unpleasant to ride over, more especially when it was what the colonialists called "honeycombed".

After passing the second stream, the country assumed more of a forest character, though still presenting grassy knolls and banks with a good deal of picking even amongst the trees. The moon was now up and we could hear the squeak of the flying opossum<sup>1</sup> and the cuckoo note of that singular bird, the Aegostheles<sup>2</sup> which partakes of the characters both of the owl and the goatsucker<sup>3</sup>.

It is called in imitation of its cry 'mopok' by the colonists.

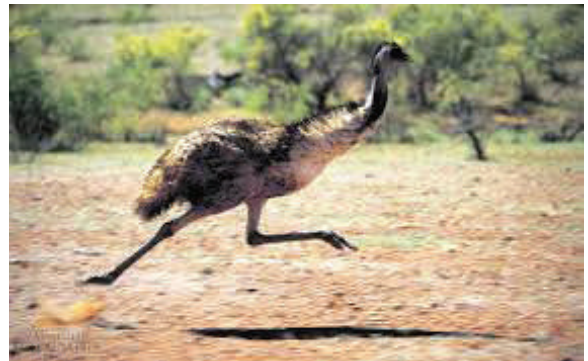
By the time we reached the inn, I was a good deal knocked up, my muscles not having recovered their tone after the inactivity of the voyage. It is situated in a very pretty grassy glade and surrounded on all sides by forest. We found in it better accommodation than I expected, plenty of mutton, damper and tea. The landlord (an old convict, by the way) very familiar in his manner and evidently accustomed to be 'hail fellow well met' with his guests.

The next morning with the peep of day we were in our saddles. The first 12 miles being through forest called black forest. The stringy bark has a rough and indented surface. I have seen some very picturesque trees of this sort and groups of them. We then emerged into a country of more

cheerful character still richly wooded but with many open grassy spaces. We met some flocks of sheep here with their attendant shepherds, but what interested and delighted me most was the number of birds which for the first time I now beheld in a state of nature; there were flocks of the white cockatoo, excessively wary, with their sentinels and outposts, and rising with harsh and deafening screams when warned by them of our approach.



There was the beautiful scarlet Lory<sup>4</sup> in pairs together, and flocks of the green leek perroquet<sup>5</sup> of the most vivid emerald and blue passed us with amazing swiftness screaming and chasing one another as the swifts do at home. I saw several species of heron, one of a beautiful white colour and numbers of the ibis or sicklebill. We got a glimpse of 3 kangaroos hopping away through the trees at a considerable distance and were fortunate enough to get tolerably near an emu, though not within gunshot. It is a very graceful bird when feeding quietly. The movements of its long neck and its attitude are elegant, but when at its speed, it looks very awkward. The neck is then stretched out to the full and it runs throwing out its legs with gigantic strides right and left and rocking from side to side.



About sunset we were on the Campaspe plains on which H's station is – this so named by Major Mitchell is a district of clear country 12 or 14 miles long by half its breadth. The rock is a volcanic one, a species of greenstone and full of little rounded cavities as if they had contained some gas. This rock is largely spread over the surface and overlies a sandstone rock, the strata of which are inclined at a very high angle to the horizon (say 75°) exposed in the watercourses. The soil of these plains resulting from the decomposition of this rock is one of the most favourable for pasture.

**Next time:**

**"The Campaspe plains are traversed by a stream of the same name..."**

1. Now called the sugar glider
2. The Aegostheles is the Australian owl nightjar
3. Goatsucker is a name applied to nightjars. Ancient greeks believed they sucked milk from goats at night. The "mopok" is now known as the boobook owl.
4. possibly referring to what we now call the crimson rosella
5. Now known as the superb parrot.



## They're back!

Silver Perch (*Bidyanus bidyanus*) have been detected in good numbers in the Campaspe and Goulburn rivers for the first time in 10 years, and Murray Cod (*Maccullochella peelii*) numbers are at a 10-year high in the Broken River system.



*Ecologist Zeb Tonkin of the Arthur Rylah Institute with a Murray cod he found in the Campaspe between Elmore and Rochester last week while doing fauna and flora monitoring.*

More information can be found at:  
<https://www2.delwp.vic.gov.au/media-centre/media-releases/murray-cod-is-gold-and-perch-is-silver-in-the-numbers-game>

## Suicide Prevention Forum

The Macedon Ranges Suicide Prevention Action Group has been working hard in suicide prevention but we need your help to make sure we are on the right track and are meeting the needs of our communities.

Everyone is welcome at a forum to be held at the Norma Richardson Hall in Woodend on Wed 28 June 2017 from 6:30-8:30pm (supper provided from 6:00pm). Please RSVP by Wed 22 June, including dietary requirements, to [macedonrangesspag@gmail.com](mailto:macedonrangesspag@gmail.com)

**Bendigo**  
Travel & Cruise Centre

**336 HARGREAVES ST. BENDIGO**  
[www.bendigotravelandcruise.com.au](http://www.bendigotravelandcruise.com.au)  
**03 5441 8811**

Find us on 



## QUALITY FARM SHEDS

Machinery	Barns
Hay Sheds	Horse Arenas
Stock Shelters	Workshops
Shearing Sheds	Garages

*Building Quality Farm Sheds since 1975*

**CENTRAL**  
steelbuild

T/A Central Vic Sheds

**1300 955 608**

8 Hoyle Court, Kyneton

Please pick  
up after  
your dog.



creative  
designs  
for your  
business

logos menus flyers posters  
 invitations brochures magazines  
 business cards advertisements  
 letterheads with compliment slips  
 full business imaging

lyn ingles | graphic designer  
[blupen@ncable.net.au](mailto:blupen@ncable.net.au)  
 0429 911 980

Sponsoring the 'Bridge Connection'





## NEW EQUIPMENT FOR METCALFE FIRE BRIGADE

Metcalfe Fire Brigade's capability to keep the local community safe has been bolstered with the addition of a new tanker. Member for Macedon Mary-Anne Thomas, representing Minister for Emergency Services James Merlino, today officially handed the keys to the new light tanker to Brigade Captain Graeme Smith. The \$230,000 tanker has a diesel pump that will quickly and easily help the brigade draw the water it needs to fight fires. The new tanker was funded through the Victorian Government's Volunteer Emergency Services Equipment Program (VESEP), with \$30,000 contributed from the brigade. The Metcalfe Fire Brigade worked tirelessly

for days protecting neighbouring properties and friends during the Black Saturday Fires, when fire threatened the neighbouring town of Redesdale. Eleven members of the brigade were today presented with the prestigious National Emergency Medal for their service during this difficult time. Anthony (Tony) Neylon was also presented his 60-year Service Medal along with a National Medal recognising his extensive and diligent community service. Mr Neylon has served his community through CFA since 1955 starting in Wando Bridge and Chetwynd Fire Brigades before joining Metcalfe in 2006. In total 26 members with between 10 and 60 years of service were honoured with Service Medals.

Quotes attributable to Member for Macedon Mary-Anne Thomas  
"This light tanker is the latest example of

the Victorian Government's Volunteer Emergency Services Equipment Program in action."  
"Our firefighters put their own lives at risk to protect our communities and deserve the best equipment to support them in their efforts."  
"I want to thank all members of the Metcalfe Fire Brigade for their continued selfless service to the community and I congratulate all those who have received medals recognising their service today."



*Below: Three generations of fire trucks. Early 1900 'T' Model Ford, 1967 Austin Pumper and the latest Isuzu tanker.*

*Below left to right Mary-Anne Thomas, Graeme Smith Metcalfe Fire Brigade Captain, CFA Board Member Hazel Clothier and MC and brigade member Tony Neylon*



## SPECIAL MESSAGE

*Bridge Connection is a not-for profit community enterprise. All the work is done by volunteers. We rely on sponsorship and advertising to cover printing costs. We would welcome new members to the organising committee and would love more assistance with editing.*

*Special thanks to **Lyn Ingles of blue pencil publishing** (0429 911 980 - [blupen@ncable.net.au](mailto:blupen@ncable.net.au)) who does all our graphic designing on a volunteer basis.*

*Don't know what we would do without her.*

**Have you seen my dog BRUCEY?**

**If so, please call Cheryl 5425 3203. Thank you.**



**Make your special celebration a PARTY TO REMEMBER!**

## Party Hire Equipment For Hire

**Tables** - 183cms rectangle

**Plastic Tables** - \$5 each

**Chairs** - White plastic - \$1

**Umbrellas** - Charcoal \$5

**Table Cloths** - White - \$2 each

**Many more party items for hire to have your occasion organised & stress free.**

**For more information please call 0418 130 206**



## BC: AUSTRALIAN GENERAL KNOWLEDGE QUIZ

1. How many countries are larger than Australia?
2. In what state/territory was the highest recorded temperature, of 53°C, recorded?
3. Australia has the world's largest sand island. What is its name?
4. In what year was Advance Australia Fair proclaimed as the national anthem by the Governor-General?
5. Do all states/territories have the same blood alcohol limit for non-probationary drivers?
6. What animal is on the Western Australia flag?
7. In what city did the Commonwealth Parliament first sit?
8. What animal featured on the 2 cent coin?
9. Who is the only person to have been awarded both the Australian of the Year and Young Australian of the Year titles?
10. Who is on the front of the current issue \$100 note?

### ANSWERS

1. Five (Australia is the sixth largest country: Russia, Canada, China, USA, Brazil)
2. Queensland
3. Fraser Island
4. 1984
5. Yes
6. Black swan
7. Melbourne
8. Frilled neck lizard
9. Cathy Freeman
10. Dame Nellie Melba

## Redesdale Community Meeting Redesdale Hall

**Sunday July 23rd from 3 to 4.30 pm**  
**Afternoon Tea provided**

**Wayne Street of 'Street Ryan' who wrote the business case will be there to answer questions.**

**A chance for the community to have the precinct business case clarified and to commission a new working group to continue the precinct project.**



# in the Heathcote Region

### Saturday 3rd June 2017

Redesdale Revellers 2017- Time: 7pm for a 7:30pm start. Cost: \$42:50 per head BYO. Three course meal, fun entertainment. Bookings ring Dorothea on 5425 3118 Venue: Redesdale Hall Redesdale

### Saturday 10th June 2017

Heathcote on Show- Queen's Birthday Weekend Details [www.heathcoteonshow.com.au](http://www.heathcoteonshow.com.au)

ALL DAY: Town festival in Barrack Reserve, live music, gourmet food, vintage cars, entertainment, displays and much more! Meet the winemakers and enjoy exclusive tastings at more than 30 Cellar Doors across the region. Bus transport available from Bendigo and Melbourne. "Tour" and "Hop On, Hop Off" buses also available.

#### SATURDAY EVENING EVENTS:

- Burlesque De Vine. An evening of divine, wicked, sassy routines by some of Australia's finest Burlesque performers paired with delicious meals and fine local wines. Venue: Toolleen Hotel Tin Shed. Bookings: [www.trybooking.com/270408](http://www.trybooking.com/270408)
- Winter Winery Dinner in the Tellurian Winery Barrel Room. 3 courses matched to 6 wines. Bookings email [info@tellurianwines.com.au](mailto:info@tellurianwines.com.au) or call 0431 004 766.
- The Shiraz Republic (till 11pm). Wine, craft beer and music. Pop-up American BBQ.

### Sunday 11th June 2017

Heathcote on Show- Queen's Birthday Weekend Details [www.heathcoteonshow.com.au](http://www.heathcoteonshow.com.au)

ALL DAY: Live music, gourmet food, vintage cars, events, entertainment, displays and much more! Meet the winemakers and enjoy exclusive tastings at more than 30 Cellar Doors across the region. Bus transport available from Bendigo. "Tour" and "Hop On, Hop Off" buses also available.

#### SUNDAY EVENING EVENTS:

- Heathcote Supper Club - Simply the Best Films & Wines. Film Sour Grapes: True Story – Fake Wine. \$35 includes film, delicious supper of Kumar's Curries plus a glass of wine. Venue Heathcote RSL Hall. Bookings [www.trybooking.com/270408](http://www.trybooking.com/270408). Enquiries 0425 759 573.
- Winter Winery Dinner in the Tellurian Winery Barrel Room. 3 courses matched to 6 wines. Bookings email [info@tellurianwines.com.au](mailto:info@tellurianwines.com.au) or call 0431 004 766.
- The Shiraz Republic (till 11pm). Wine, craft beer and music. Pop-up American BBQ.

### Monday 12th June 2017

Heathcote on Show- Queen's Birthday Weekend Details [www.heathcoteonshow.com.au](http://www.heathcoteonshow.com.au)

ALL DAY: Live music, gourmet food, vintage cars, events, entertainment, displays and much more! Meet the winemakers and enjoy exclusive tastings at more than 30 Cellar Doors across the region.

### Monday June 12th

- The Shiraz Republic (till 9pm). Wine, craft beer and music. Pop-up American BBQ.

### Coming Events – Save the Date

- Thursday 3rd August 2017 - Saint Martin's Heathcote Wine Show- More info later
- Friday 4th August 2017 - Saint Martin's Heathcote Wine Show- More info later
- Sat 26th August 2017 - Heathcote Film Festival- More info later
- Sat 7th October 2017 - Heathcote Wine & Food Festival- More info later



## Steph Ryan MP Member for Euroa

2/55 Carrier Street, Benalla VIC 3672  
www.stephryan.com.au  
03 5762 2100

This publication was funded through  
Parliament's Electorate Office  
and Communications budget.



### The Liberal and Nationals' plan to tackle crime

The Nationals in coalition with the Liberals will take a tough approach on crime if elected next year.

Member for Euroa and Deputy Leader of The Nationals Steph Ryan said Victorians should feel safe in their homes, but after two years of Labor the state's crime rate has skyrocketed by 20 per cent.

In Greater Bendigo the crime rate has risen a whopping 24.93 per cent since Labor took the reins of government in 2014.

Ms Ryan said it was clear a different approach was needed and the Coalition had a clear plan to tackle crime.

"Rather than more of the same soft on crime approach, an elected Liberal Nationals government would take a tough approach and introduce mandatory minimum jail sentences for the most dangerous offenders in our community," Ms Ryan said. "Violent repeat offenders shouldn't be getting second, third and fourth chances to commit violent crimes - no more excuses, no more second chances, its two strikes and you're in."

The minimum sentences would apply to 11 violent offences, including rape, aggravated burglary, manslaughter by single punch or strike, and murder.

Ms Ryan said these changes would extend to all areas of our community.

"Perpetrators of domestic violence, who think they can ignore the lessons of earlier violent behaviour, will face long sentences for their contempt for our laws," Ms Ryan said.

Ms Ryan said it joined a broader suite of earlier announcements by the Liberals and Nationals on bail, sentencing, police resourcing and youth justice which would be needed to make Victoria safer.

"The Andrews Labor Government is not being taken seriously on law and order issues," Ms Ryan said.

"In addition to sentences that better reflect community standards, the Liberals and Nationals will deny parole to convicted murders who refuse to disclose the location of their victims, we will reinstate Neighbourhood Watch funding, introduce new carjacking offences and abolish cash payment for scrap metal.

"We will name and shame repeat violent offenders, expose the juvenile criminal history of violent adult offenders and we will put victims of crime first.

"This includes providing victims of crime access to criminal's superannuation as part of compensation."



### Baynton Sidonia Landcare group AGM and

### Annual (Enormous!) Bonfire and BBQ

Saturday 17th June starting at 5 pm.  
Follow the signs on Green's Lane, Baynton.

All welcome!

Meat and veggie options provided. Bring a salad / dessert to share  
Also BYO chair and drinks.  
Marshmallows and sparklers provided for the young and the not so young!

No need to RSVP, but queries to Peter 54237235.

In the event of truly awful weather, the venue will be the Baynton Hall,  
Darlington Road, Baynton 3444

### Quote of the month:

**"If you think health care is expensive now, wait until you see what it costs when its free!"**

*P.J.O'Rourke*

## Todd PROPERTY

Real Estate Sales  
& Property Management  
with Service.



Brad Todd  
Director



Barb Walker  
Sales Consultant



Kristy Kelly  
Property Consultant

*"We help make dreams a reality"*

5433 2288

95 High Street Heathcote





Federal Member for Bendigo

**LISA CHESTERS MP**

PO Box 338 Bendigo 3552  
Cnr Williamson & Myers Sts, Bendigo 3550

T: 034 5443 9055 • F 03 5443 9736  
E: Lisa.Chesters.MP@aph.gov.au

Twitter: @LMChesters • Facebook: /LisaChestersBendigo



## Sizzling arts in Kyneton



**Macedon Ranges**  
Shire Council

Pull off your slippers, throw off the blankets and step away from the heater—June's serving up a sizzling program of arts and culture at Kyneton Town Hall, with musical performances taking centre stage.

On Friday 16 June at 11.30am, Jeff Jenkins takes audiences on a powerful journey of the 20th century as he performs the music of folk singer, rebel and rock star, Bob Dylan in Dylanesque.

Together with his electrifying four-piece band, Jenkins pays tribute to his extraordinary life and songs, with a spellbinding performances of more than 30 of Dylan's finest songs.

Take a trip down memory lane on Friday 23 June at 8pm, as Australian actor and musician John Waters joins forces with esteemed pianist Stewart D'Arrietta for the stage production, Lennon Through a Glass Onion. Part concert and part biography, the performance is an insight into the life and times of one of the most fascinating icons of our time, John Lennon. Hot off the heels of their popular 16 week season in New York, the show features all the classics, including Imagine, Strawberry Fields Forever, Revolution, Come Together and more.

On Saturday 24 June at 8pm, Damien Leith salutes one of his greatest musical heroes in his tribute to Roy Orbison. Expect beautiful lyrics and lush melodies straight from the Big O's repertoire, delivered with warmth and affection by Damien. Whether you are a Leith or Orbison fan, this performance is going to be memorable.

On Friday 30 June, the genre-busting guitar duo, Grigoryan Brothers return to Kyneton Town Hall to perform works from their latest release. From 7.30pm, Slava and Leonard return to their classical roots as they present new masterful arrangements of Bach, Elgar, Dvorak, Rachmaninoff and Ponce.

Don't forget to stop by the Kyneton Museum before Sunday 9 July to revisit fashions from the time of Jane Austen, in the exhibition, Be Persuaded: A Jane Austen Experience.

The collection of rare fashion, accessories and ephemera from the 18th century through to the 1840s includes pieces such as an 18th century silk gown, boots, bonnets, parasols and more.

With items on show taken from the collection of Dressing Australia Museum of Costume, Be Persuaded is an opportunity to explore how fashion tells a story.

For more information on shows, or to book tickets, call 1300 888 802 or visit [mrsc.vic.gov.au/buytickets](http://mrsc.vic.gov.au/buytickets)

## FARMERS' MARKETS

Woodend Community Farmers' Market  
Sat June 3rd  
Cnr High & Forest Streets, Woodend  
0487 444 090 Sharon Kittson

Daylesford Farmer's Market  
Sat June 3rd  
Daylesford Primary School  
03 5664 0096 Peter Arnold

Kyneton Farmers' Market  
Sat June 10th  
St Pauls Park, Piper Street, Kyneton  
54 221 025 Veronica Manifold

Riddells Creek Farmers' Market  
Sat June 17th  
Riddells Creek Primary School, Riddells Creek  
0408 254 626 Ali Bant

Lancefield & District Farmers' Market  
Sat June 24th  
Centre Plantation, High Street, Lancefield  
0407 860 320 Meggs Hannes

Maldon Market  
Sunday June 1th

Authentic, community based farmers' markets.  
BYO bags, baskets & trolleys.  
Friendly dogs welcome on a leash.  
Proudly accredited with the Victorian Farmers'

# CONNOLLY GLASS

- Broken Window Repairs • Mirrors
- Balustrades • Splashbacks
- Shower Screens: Framed
- Semi Frameless & Frameless
- Retro Fitted

**Double Glazing & Commercial Window Frames & Glazing**

**0428 535 101**

**177 Lyell Road, Redesdale. Vic. 3444**

Email: [chrisjen@bigpond.net.au](mailto:chrisjen@bigpond.net.au)



## Visible Women

BY KERRY ANDERSON

While the Invisible Farmer project has recently helped to shine a light on women historically unrecognised for their contributions on the land, I am pleased to report that more and more women are becoming successful in their own right and helping to strengthen our rural towns. Their stories are truly inspiring. In the process of writing my book, *Entrepreneurship: It's Everybody's Business*, I had the privilege of interviewing a variety of business people across rural Australia, many of which were enterprising women. For instance, Sarah Sammon returned to her home town of Swan Hill with a science degree but no career path. Combining forces with her mother they reinvented a declining property with 1,000 rose bushes into the incredibly successful new business, Simply Rose Petals. Naomi Ingleton brought an old butter factory in Myrtleford back to life capitalising on the surrounding dairy farms. King Valley Dairy now produces a range of spe-



cialist dairy products for our top restaurants and direct purchase by customers.

In Birchip, Andrea Harrison turned a problem into an opportunity. Recognising the difficulty for rural mothers to purchase quality children's clothing and shoes, she started Kawaii Kids, a successful online company that now supplements her family's farm income.

Closer to home in Castlemaine, my own daughter, Elise Brown, is owner of Fair Dinkum Dog Coats which are manufactured and sold Australia wide through her website. Recently I toured Melton, an 8,500 hectare cattle station in central Queensland. Rebecca Comiskey (pictured right with Kerry) is a teacher by training but she has thrown herself full time in to this new challenge with husband David. She is learning her craft in infinite detail by monitoring everything from organic soil carbon to genetics and genomics. Effectively she is taking the business to a new level that David could not achieve on his own.

Every one of these stories are helping to break the glass ceiling for women in rural Australia. They are far from invisible as they create new businesses and new ways of doing business but there is always room for more.

As the next generation of young women mature and enter the workforce, I am heartened that they will have the benefit of many great role models that are contributing to the future of rural Australia. We can all do something positive by sharing their stories and making these women even more visible.



[www.kerryanderson.com.au](http://www.kerryanderson.com.au)

## CONNECTIVITY PROBLEMS? WE NEED YOUR INPUT!

Regional Development Victoria (RDV) is concentrating this year on the connectivity problems (Internet and mobile phone) of rural communities. There is potentially some funding in the offing for innovative solutions to our connectivity problems.

We need some REAL LIFE anecdotes that will ram home to politicians what the actual difficulties are for rural people. There is nothing like a story to make people understand. As you know, people in large cities take connectivity for granted and don't realise how divisive the "have" and "have not" situation is. There is to be a "Assembly" of interested people in August in Bendigo and they are looking for anecdotes of peoples' experiences (possibly with photos etc) to present to the politicians.

The main issues which have been identified as causing problems for rural communities include:

- \*Business enterprises jeopardised by poor connectivity,
- \*Farming security and innovative projects jeopardised by poor connectivity,
- \*Problems with services - such as banking, veterinary services etc
- \*Social inclusiveness - community linkages and inability to access on demand TV and films such as Netflix etc.etc which urban communities take for granted.

Could you please send in a few sentences about your connectivity experiences - if possible with some photos- to [bridgeconnection.editor@gmail.com](mailto:bridgeconnection.editor@gmail.com) and we will collate them.

Kathy Hall - Ed

Turn your house  
**into a home**  
with Tucks  
locally made products



- Aluminium and Timber Windows
- Window Replacements • Security Doors
- Shower Screens • Wardrobe Doors

We are in your area regularly and offer a **FREE** measure and quote service.

**We can offer supply and install prices.**



**Tucks  
Windows  
BENDIGO**

Celebrating 43 Years  
providing top quality  
products and  
professional  
friendly service.

P: 03 5446 8855 E: [tuckswindows@impulse.net.au](mailto:tuckswindows@impulse.net.au)

[www.tuckswindows.com.au](http://www.tuckswindows.com.au)





## Winter Wine & Dine REDESDALE Saturday & Sunday 10th & 11th June 2017

On the long weekend in June, Redesdale is again host to the Winter Wine & Dine - a celebration of winter and the passionate local producers in this part of the state. "Redesdale, Barfold and surrounding areas, feature some of the best and most awarded olive and grape growing regions in Central Victoria and the World" says Sandra Aitken one of the wine-makers participating, "Many of the olive producers nearby have won international awards for their olive oils and the wines do amazingly well in wine shows, especially considering how tiny we all are compared to those from other regions and states. We are all punching well above our weight. This part of Central Victoria has some of the finest beef, pork and lamb producers in Australia. It is a pretty convincing story and most people just don't realise what great produce we have close to hand.

The focus of the weekend will be to "Show and Tell" this story to the visitors. And not only wines and olive oils! There will be lots of local producers to talk with including growers and producers of walnuts, chocolates, apples, homemade icecream, puddings, preserves and some spectacular cheeses. It sounds like a great place for a meal, doesn't it?

"The Redesdale Hotel will be serving a selection of winter dishes to warm all weekend and we will feature local wines and beers by the open fire," said Beth McIlwain, manager. "Garth (chef & partner) is planning some fabulous things for the weekend, maybe a casserole of roasted, grass fed beef from Barfold or an antipasto featuring some of the many & varied local game, salamis, Castlemaine pork, Redesdale rabbit, cheeses from Goldfields and Sutton Grange, organic fruit from the Harcourt orchards, salad greens freshly picked from the vegetable plot, freshly baked Artisan breads from local bakers, newly dug potatoes, some of his homemade mayonnaise or sauces featuring the best of the new season olive oils and free range eggs - only those from happy chooks of course," she laughs. "Our salad dressing is made with local wine or cider vinegar and award winning extra virgin olive oils, and we love the home prepared olives from the local olive groves. We might even do some chutneys and relishes just to complete the picture.

It's going to be a fun weekend and we have planned some great local music too ! "

Visitors can sample the local wines, ciders and boutique beers and purchase a glass (or a bottle) of something delicious to enjoy with a meal or to take home. There will be live music, lots of food, great coffee, bocce games on the bocce court, a brisk walk round the oval, open fires & lots of other things for young and old to do.



*Front of house - Redesdale Hotel*

Many of the producers featured will be available for visitors to meet over the weekend. Live music will add to the atmosphere and there will also be activities for the children.



Camping is available on the oval for those with caravans or stout constitutions for the wintery Winter Wine & Dine Redesdale is an event to showcase the specialties in this unique little region of Victoria and all the good things that go with it. It will feature a focus on food and a great country experience. This is the second time this event has been held and it promises to be bigger and better than last year. Entry is free!



*The kitchen staff, Redesdale Hotel.*

**For more details please call Beth and Garth at The Redesdale Hotel on 4405 0601 or Sandra on 0412 243 315 or follow us on <https://www.facebook.com/winter-wineanddine>**

## The Redesdale Hotel



Classic Country Pub Dining

**For bookings  
please call (03) 4405 0601**

Monday - Closed  
Tuesday - 4pm to 8pm  
Wed to Sun • Lunch 12noon - 2.30pm  
• Dinner 6pm - 8.30pm

The Redesdale Hotel  
2640 Heathcote-kyneton Road  
Redesdale, Vic, 3444

[info@theredesdalehotel.com.au](mailto:info@theredesdalehotel.com.au)



The Redesdale Hotel

[redesdalehotel](https://www.facebook.com/winter-wineanddine)



**[www.theredesdalehotel.com.au](http://www.theredesdalehotel.com.au)**



# TRIBUTE TO DAVID ERNEST JAMES 15th June 1928 – 30th March 2017



An excerpt from the eulogy delivered by Andrew James at James Creek on the 4 April, 2017. Written with assistance from Rosemary, Nimity, Melissa and Richard.

David Ernest James was born in 1928 in Castlemaine, elder son to Ernest and Evelyn (Mase) James and brother to Barbara, Brian and Valerie. David was raised at Coliban Estate, Redesdale on the farm that Ernest purchased in 1920.

Growing up on the farm was full of adventure and hard work, from all the stories that we hear. Often David and Brian would be sent out rabbiting or fencing to the edge of the property and sometimes would camp out. David attended Sutton Grange Primary School. He had the same headmaster for his entire time there. Mr. Cox was apparently a very strict taskmaster but engendered respect. Often they

travelled to school by horse and cart and in bare feet. David was designated captain with Brian, Valerie and Nancy Begg as passengers.



From Sutton Grange David went to board at Wesley College in Melbourne, where he played some football and did some rowing but yearned to be back on the farm.

After Wesley David returned to Coliban Estate and from 1945 he and his brother Brian worked the farm. They took over the running of the property after their father died in 1959 and continued their wonderful and happy working partnership for over 40 years. They expanded the farm over time, undertook pasture improvement and soil conservation, ran sheep for meat and wool, sometimes dabbled in cattle and crops always trying to adapt to the ups and downs of farming. David was a dedicated and hardworking farmer who engendered respect and ad-

miration from all those who worked with and for him with his honest approach to life and work.

In 1956 David married Rosemary Wood, a kindergarten teacher from the western district and a great friend of Valerie (Dad's sister). They went to live in the shearers' quarters at Coliban Estate until their new house at James Creek was built. Their first born, Andrew arrived in December 1956 and Nimity, Melissa and Richard followed over the next 6 years.



David was a founding member and Vice Commodore of the Bendigo Yacht Club and a member and sometime President of the Bendigo Wine and Food society. Melissa recalled that Dad would come home from his monthly wine and food society meetings and sit on one of our beds and describe the menu to us. Now that's a true foodie. He was honoured to become a Life member of the Fire Brigade. In later years Mum and Dad spent many happy times adventuring and camping at the Snowy River, Coopers Creek, Lake Eyre, Ayers Rock and many other places.

Continued on page 13

General Repairs, Maintenance

Tiling, Carpentry

Home & Garden Maintenance Services

Robert Schomacker 0407 823 900

Painting, Gardening

CHURCH SERVICES

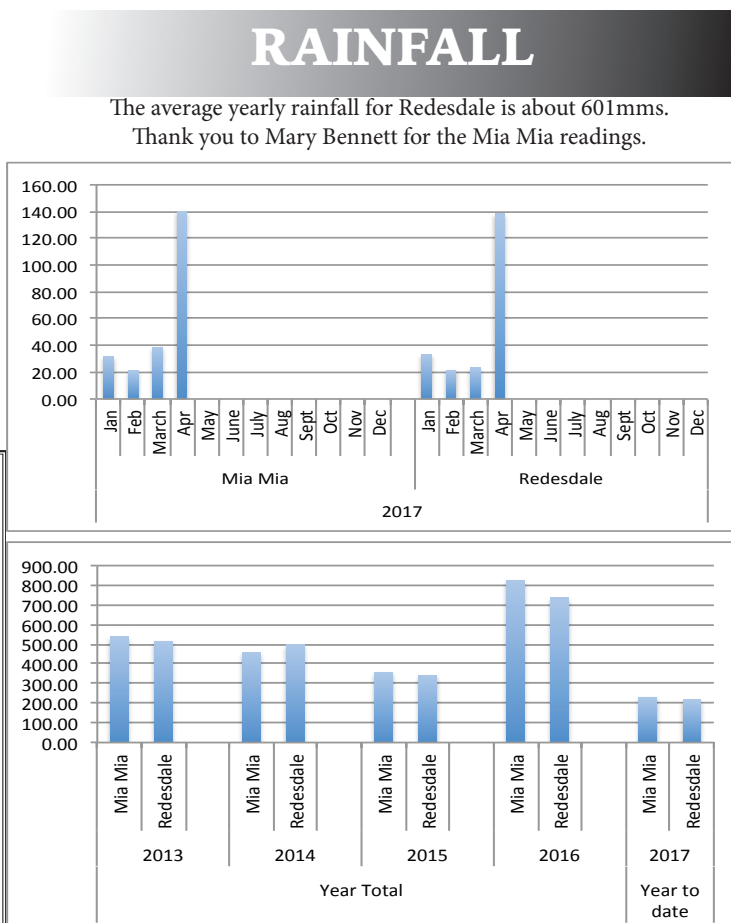
UNITING CHURCH

Barfold: 1st Sunday of each month  
Metcalf: 2nd Sunday of each month  
Mia Mia: 3rd Sunday of each month  
Sutton Grange: 4th Sunday of each month

Morning tea is served at each of these Uniting Churches at 9.45 am and services start at 10 am and finish at 11 am. If there is a 5th Sunday in the month, services may be found at Kyneton.

CATHOLIC CHURCH

Redesdale: 2nd Sunday of each month 11 am



## Tribute to David James - Continued from page 12

He was interested in everything. Art, nature and people delighted him in such an enthusiastic way. And even towards the end of his life he still had flashes of genuine insight, genuine delight, curiosity, wonder and humour. His humour was there to the end.



A precious memory that always reminds me of the essence of dad is of all of us, the six of us, lying on the lawn on hot summer nights gazing up at the night sky and contemplating ... everything! Asking Dad questions like how far away is that star? Or what's beyond the stars? Or how big is the universe? Dad wouldn't answer our questions directly but would theorize and question and wonder along with us as we all lay there gazing upwards. Now that was fun!

Dad's up there now somewhere. Maybe

he is one of those stars or maybe his spirit is spread out over every single star, planet and in all the dark spaces in between. Wherever he is Dad left a very gentle footprint on the planet. Driving down from Mt Alexander one can look out and see the James Creek hills reforested with trees that Mum and Dad planted – each and every tree a gesture of love to the environment and to each other.



I would have liked to have said to Dad when he came out to James Creek on the morning of his burial for a last look at those hills after 2 years of not being here: "Well Dad it's time to say goodbye for now to this place for a while. To this house that you and Mum built, to these stone walls and paving that you created for mum and us, to the dam, to these hills that were bare that you and mum filled with life again; to all the trees and garden beds you planted around the house, each tree and shrub so familiar to us that we could almost call them by name. The pergola that now is in a similar state to a lot

of us now, old, but under which we had so many happy times. But we know that you won't be away for long or maybe you never went away and that your true and gentle spirit will always be here among the trees and on the water and in the sky looking down on us and looking after us just as you looked after us for your whole life."



**Vale, David.**



## Changing shapes in Redesdale!



Bringing fitness and fun to our small community, local Jessica Carr has opened up the Redesdale boot camp to anyone with the time and motivation. The program is accessible to people of all ages and abilities, with a focus on taking things at your own pace while pushing yourself to be better than the last time. The exercises are challenging, but the satisfaction of getting through the session is well worth the effort. Jess pushes everyone to try their best, but she also encourages every

one to take breaks when they need it and is always ready to adapt exercises to any injuries you might have.

The program has benefits that go beyond the physical; any form of exercise has been proven to improve mood, and this is doubly true for social activities. The atmosphere of the boot camp is friendly and supportive, and the only competition is against yourself. Regardless of skill level, everyone is encouraging and works together as a team, creating an environment that is fun and without pressure.

"I think that's the best bit, that you're giving people a commitment and a fun environment to work out in instead of trying to do it by themselves," says Jess. "When it's in a group environment people actually like doing it more and staying committed to it."

No matter what your goals are when you start, you'll notice some improvement after a few sessions. There are four sessions a week, but if you can't make it to all of

them, you'll still be able to go and enjoy yourself.

Bootcamp begins at 6:30pm on Tuesday and Thursday nights and 6:00 on Sundays. The Saturday morning session, beginning at 7, ends with a trip to the Rural Cafe for some added social interaction and a much-needed coffee.



**Jess can be contacted for pricing at  
0402 018 783**

**Tahlia Campbell**





## Redesdale Ramblings:

### Nerines

Nerines were one of the first bulbs I ever knew about because there were a few clumps in our garden when I was growing up in Melbourne. These were the two most common varieties, pink *Nerine bowdenii* and pristine white *Nerine flexuosa* 'Alba'. They never seemed to need any attention such as fertilizing or watering; they just grew and came into flower each autumn. I was dazzled by the impressive red Nerine "fothergilla major" (below) which one of dad's friends grew in a large terracotta pot, but it was many years before I got to grow it or any other types myself.

Moving to Central Victoria I found that the "common" pink *Nerine bowdenii* didn't do as well as it did in frost-free Melbourne but the white one, now considered to be a form of *Nerine humilis*, was fine, especially if planted in the shelter of the house.

Surprisingly the red "fothergilla Major" (now apparently a form of *Nerine sarniensis*) is also okay in our conditions multiplying slowly and flowering quite reliably. In flower at the same time is the smaller and finer petalled *Nerine rosea* in an eye-catching magenta pink (above right).

A number of years ago I crossed the last two species and created a hybrid which combines characteristics of each: small flowers like *Nerine rosea* but in a terracotta colour.



N. fothergilla  
major



*Nerine rosea*

In fact it makes it easier to cross pollinate one type with another. A few weeks after dabbing pollen from one flower onto another the seeds should be ripe and will fall off with a gentle shake.

Depending on the variety the seeds could be as large as a pea or as small as a lentil. Simply harvest the ripe seeds and sow them on the surface of a potful of potting-mix (add a bit of sand or grit to ensure it's free-draining) but don't cover them with anything. Keep the pot somewhere frost-free and soon a root will develop and find its way down into the soil to produce a small bulb and then will send up a single leaf. Keep the pot watered as more leaves appear to help the baby bulb grow and eventually (it takes 2 or more years) it will get big enough to send up a flower stem.



Fermi's orange  
hybrid

Many of the more recent hybrids involving *Nerine sarniensis* seem a bit tender and though frost won't kill them outright it can damage the leaves so that the bulbs don't develop enough to produce a flower spike. Fortunately they can be grown in pots so you can easily protect them when really cold weather threatens – shade-cloth over them seems to be adequate protection.

Even some of the hardy types like "Winter Jewel" can suffer if a hard frost hits when the stems are just emerging. I guess it's the luck of the draw when it comes to frost and cold weather but some years we can be lucky and get a great display of those flower-heads in a great range of colours – and the white is always welcome as it invariably is in flower on Mothers' Day!

Cheers,

Fermi

The Redesdale Rock-Gardener



Our **boutique nursery** hosts an array of **beautiful plants**, many unusual, some rare, that you might not find elsewhere. Of course, being in the Macedon Ranges, there is an **emphasis on frost hardy varieties**.

Mention  
this ad for a  
**10% Discount**

Among the plants you will discover **unique garden art** from local artists and artisans as well as **recycled and restored garden wares**.

**The Garden Tap  
Nursery and Lodgings**

p: 03 5422 6117

e: [hello@thegardentap.com.au](mailto:hello@thegardentap.com.au)

96 Piper Street, Kyneton, Victoria

**[www.thegardentap.com.au](http://www.thegardentap.com.au)**



Hello Dear Readers,  
Lady Bombay here.  
I often wonder about the silly little things I have created in the garden of Mia Mia Manor. I did think it was a marvelous idea to plant a grove of quinces down near the pony paddock years ago. Now although they make a very attractive walk, I didn't contemplate their abundantly fruitful yield. My friends have stopped asking me to bring anything to social occasions,

as they know they will receive a lifetime's supply of quinces from me, sometimes in paste and jam forms. Simply delicious to me but dire to others. I am not too sure as to why this year has been a such a sizeable crop, however everyday I pick large baseball-sized fruit and stack them in the back of the old chicken cottage which now looks like a modern art installation one sees at the more progressive galleries. I have also taken to wearing my riding hat whilst picking so as not to concuss one's self on the head. Had quite a problem with those nasty European wasps recently as I went to sit on an old log. At first I did not notice the cheery colour of its exterior. Good gracious! What a huge nest I was sitting on. They had to go. So what I organised was that Thorn the Gardener was to take the large red can of Mortein and spray that nest and others around the property at dusk. Unfortunately for

him, he never listens to me, and so he carried out this duty in the middle of the day. The hospital said the swelling should go down eventually. I have never seen a gardener so hysterical. There was certainly no composure in the workplace that day.

At least our true Autumnal reality is here for all to enjoy. Make sure you mulch and/or compost those deciduous leaves to give the garden lots of that delicious nitrogen.

Time for Mothers ruin and anti inflammatories for Thorn the gardener.

Toodle-oo  
Lady Bombay Saphire

## Garden Lore

"Other people's tools only work  
in other people's gardens."  
-Arthur Bloch

*(Apologies for the miss-typing in  
last month's Garden Lore - Eds)*



## Bombay and a Bex

*Send in your questions for Lady Bombay Saphire to  
bridgeconnection.editor@gmail.com*

Dear Lady B,  
I have a new neighbour. That's well and good, however her property overlooks mine and she can see whatever I am doing in the garden. She is constantly giving me advice on what to do regarding bonfire burning, tree removal etc. etc. I have lived here for over 20 years and somebody from the city is telling me how to suck eggs: a constant know-it-all and clearly an avid follower of Google.  
Yours exasperated,  
Barbara.

Dear Babs,  
These tree changers can be the bane of our lives. What I suggest, not that I speak from experience, is take your CD player outside, and whilst gardening, play the 1812 overture by Tchaikovsky, cannons and all at noon everyday. She will think you're not only a sandwich short of the picnic, but I can guarantee she will avoid you like the plague. Then one can return to the garden with complete privacy.  
And remember at the end of the day of your first trial of my solution, a well deserved Mothers ruin and a bex.

Lady B

**Do you require firewood cut,  
rubbish removed  
or a tree lopped?  
We do that too...  
call us for a quote.**

**Les 0481 232 896**

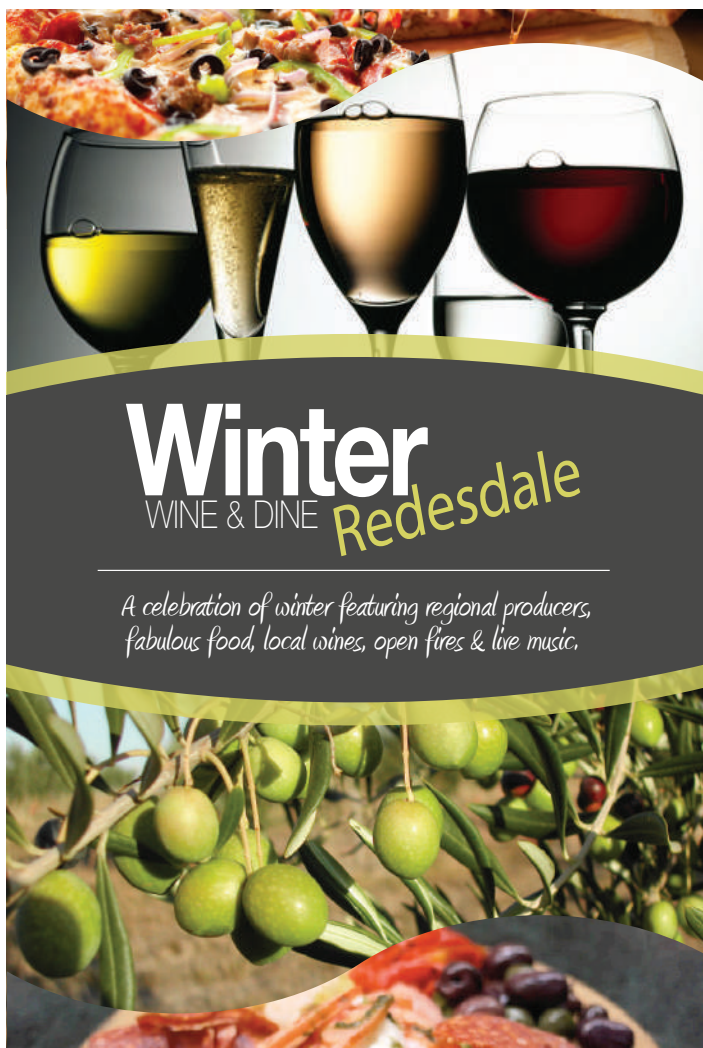
# GRASS SLASHING



**NEEDED:** Any *old greeting cards* to recycle  
into new ones  
Ring Janette for pick up. 0407 004 728.







# Winter

WINE & DINE *Redesdale*

*A celebration of winter featuring regional producers, fabulous food, local wines, open fires & live music.*

## Mia Mia Big Sing 2017

Three great choirs - One Big Sing!



The Souffle Sisters



Women of Note



Homebrew Singers



Mia Mia Hall



## Mia Mia Fire Brigade Fundraiser

**Saturday 17th June**

TWO TICKET OPTIONS

**LUNCH + CONCERT + AFTERNOON TEA - \$30**  
**CONCERT + AFTERNOON TEA - \$20**

**BBQ LUNCH SERVED @ CFA STATION - 12PM**  
**CONCERT & AFTERNOON TEA @ MIA MIA HALL - 1.30PM**

Book tickets via [trybooking.com/QDUO](http://trybooking.com/QDUO)

**DEFIBRILLATOR**  
**AT THE REDESDALE STORE**  
**24/7**

**CALL 5425 3154 IF THE STORE IS CLOSED**



## The ALBION

KYNETON

*Come and enjoy the experience  
that is The Albion Kyneton*

**The Albion** offers a fine selection of local wines and famous beers on tap. Local produce from the Macedon Region is carefully prepared for classic Italian dinners.

Children are catered for with a special menu just for their discerning palates.

**The Albion** is ideal for functions or parties. and offers indoor restaurant and outdoor courtyard dining.

### Hours of Operation:

7 Days a Week 12noon till Late

• **Lunch** 12noon to 2pm • **Dinner** 6pm to 9pm

Phone for bookings (03) 5422 2066

Email [drinkanddine@thealbionkyneton.com.au](mailto:drinkanddine@thealbionkyneton.com.au)

1 Mollison Street, Kyneton Vic 3444

[www.thealbionkyneton.com.au](http://www.thealbionkyneton.com.au)



The Karaoke night at the Redesdale Hotel on Saturday 20th May was a huge success with approximately \$900 being made for the Redesdale Mia Mia Primary School!

Well done to Kylie Munro and the Pub and all who halped organise the event through the Redesdale Hotel Social Club.

And well done also to all those who bravely took the microphone!





# Redesdale Recreational Reserve Committee Inc.

## Chairman's Monthly Report

### June 2017

Hi Redesdalians!

We are now well into the first month of winter and how nice it is to sit in front of the fire on these rather chilly nights. The Revellers are well into their 29th year performing their variety style show and going strong. Congratulations from the Reserve Committee on such a fine achievement.

The Committee is currently finalizing construction of the store area of the pavilion as can be seen in the pics, the grated drain at the back of the pavilion has been completed and a contractor has been sourced to realign the road level to suit this drain.

Electrical work has been rerouted to accommodate the roller door for access to the store courtesy of young Steve Atkins. A big thankyou from the committee, Steve! Next stage of construction will be decking to bring the floor to one level in front of the store.

Soon fencing will be run from the Kyneton-Redesdale Rd to the end of the septic distribution area and a pair of McKay-Sunshine gates will be installed at the rotunda. A special thankyou from the committee must go to the generosity of

a local community member who donated these special gates.

The next fundraising function for the Reserve Committee will be a stall at the Food, Wine and Local Produce show at the reserve on the 10th & 11th June, where we look forward to seeing as many locals as possible enjoying the fare on offer. It will be a good opportunity to air some of your suggestions for the reserve. The generosity of people in the community when a request goes out is amazing. They really step-up.

Finally remember a friendly smile and hello makes visitors to our little paradise feel welcome, until next month keep smiling.

Les Pocock



*Members of the Reserve Committee building the storage area onto the Pavilion*



## KARAOKE



## LANGLEY PRIMARY SCHOOL

Langley Primary School continues to celebrate its commitment and enthusiasm for collaborating on projects with the community. This Term, our Grade 4/5/6 students welcomed Bob Grubb, local Men's Shed member, into our school, to work with the students to put together nesting boxes for native birds in our local environment. Students, worked with timber, used templates to mark drill holes, 'drove home' nails and attached hinges, using screws and screwdrivers. The project will continue into the Term and we look forward to seeing the finished products.





## RECIPE OF THE MONTH

22



### Pomegranate, feta and walnut salad

We are continuing our theme of sharing recipes for produce that is plentiful in the garden at the moment. There has been a bumper crop of walnuts from Boonderoo Walnuts in Redesdale this year and we know that many of you have pomegranate trees which are burgeoning.

100 gm lettuce - (or you could use rocket or spinach)  
1 pomegranate  
10 walnuts  
100 gm of feta cheese

Dressing  
1 glug of extra virgin olive oil  
Juice of half a lemon  
1/2 teaspoon of dijon mustard

Take the seeds from the pomegranate, taking care to remove all the yellow skin.  
Lightly crush the walnuts.  
Mix the olive oil, lemon juice and mustard.

Toss the leaves in the french dressing, add the walnuts and crumbled or cubed feta and then finally add the pomegranate seeds.

It looks and tastes spectacular!

**NETCALFE WINTER FEAST**  
**SATURDAY JULY 1ST 6PM**  
**AT THE HALL**

**MYSTERY BOTTLE AUCTION**  
BYO MYSTERY BOTTLE TO DONATE

**TRIVIA**

*Make up a table of 6 with friends and family*  
( tables of 6 bookings: 0416 024 698 )

**CASSEROLE M to Z**  
**SWEETS A to K**

**"LUCKY NUMBERS"**  
available on the night  
\$50 per ticket

**Adults \$10, u/12 FREE**

**All proceeds go towards the running of the TRACTOR PULL**

## Local farmers always learning!

On Wednesday 16th May, local Burke and Wills Best Wool and Best Lamb (BWBL) group attended a pasture information day at the Redesdale Hotel. The guest speaker was Lisa Warne (ag. consultant from Ever Graze) who relayed tactical management and grazing systems in pasture and stock management. It was arranged by Bendigo ag consultant and BWBL leader for our area Erica Schelfhorst. A very informative day enjoyed by all.

Tas Johnson



## BOOTCAMP

**\$10**  
a session  
First session  
is **FREE!**

**TUESDAYS**  
6.30pm - 7.15pm  
**THURSDAYS**  
6.30pm - 7.15pm  
at Redesdale Hall

**SATURDAYS**  
7am-7.45am  
at Redesdale  
/Mia Mia  
Primary School

Get Motivated, Healthy & Strong! Increase Energy and Endurance  
Gain Confidence, Lose Fat, Inches, Weight **BE SOCIAL and HAVE FUN!**

All Fitness levels welcome! Come along, bring a drink bottle, a towel and prepare to have fun and be puffed! **ARE YOU READY TO MAKE A CHANGE?**

**JESSICA CARR 0402 018 783**





## Your Health!

with

## Dr Tim

### Liquorice is more than candy

So many of our medications today are produced in bulk by chemical manufacture that it is worthwhile remembering that originally many medicines came from plants or other natural sources.

Aspirin, taxotere, digoxin, colchicine, morphine and botulinum toxin are but a few examples.

There are many other plants which have been used as age-old treatment for all sorts of health conditions, but which have never been "commercialised" as regulated pharmaceuticals. One such plant is the liquorice root. Everyone knows of liquorice as the soft black confection in the sweets shop. But what many of you may not realise is that liquorice contains a number of bioactives that can have a therapeutic effect - or can be harmful in excess!

Glycyrrhiza glabra or Liquorice root, is a small shrub that grows naturally in many Mediterranean countries and has been used by people living in those areas for thousands of years.

Glycyrrhizin is the main bioactive derived from this plant and is known to have a number of health effects. It is also the compound that gives liquorice its sweetness - being 50 times sweeter than normal sugar.

Now it is useful to know that Glycyrrhizin like many large compounds in food is poorly absorbed into the blood stream - mainly because it is metabolised extensively by bacteria in the bowel and by your liver before it has a chance to circulate in the blood. Nevertheless some will be absorbed into your system if large quantities are consumed.

Once it is inside your circulation it has inhibitory effect on one enzyme in the body in particular - 11beta hydroxysteroid dehydrogenase. This inhibition can result in increased cortisol and mineralcorticoid activity. These are hormones with wide-ranging effects on immunity and fluid and salt balance.

Stemming from this - it is thought to have a variety of effects on general health including prevention of ulcers, laxative effect, anti-inflammatory and anti-diabetic effects, expectorant and bronchodilator

effects.

It is interesting that the tobacco industry uses liquorice in large quantities as it improves the palatability of tobacco, and also helps you breathe in all the other harmful stuff in cigarettes because of its bronchodilator effect!

Glycyrrhizin has been used in clinical trials for a number of conditions including atopic dermatitis, autoimmune and viral hepatitis, lipid disorders and neurodegenerative disorders. While it is very fair to say it's therapeutic effects are not compelling - there is certainly evidence of benefit! On the other hand, consumption of large quantities can lead to potassium depletion in the blood and consequently muscle weakness and nerve disorder. I can't say I've ever seen a case of liquorice toxicity - I'm guessing that it's just not that popular here in Australia - though personally I think it makes a very tasty cup of tea.

Whichever way you look at liquorice though, as interesting flavour or medication alternative, it is a sweet reminder of the potential for discovery of botanical therapeutic gems - I say keep fossicking!

Dr Tim Stobie 5422 1397

**Kyneton Medical Centre**  
Knowledgeable. Modern. Caring.

### Biggest Morning Tea.



10.00 am, Thursday, 22nd June, 2017  
at the Redesdale Hall.

Fundraiser for the Cancer Council  
hosted by the Redesdale Hall Committee Inc.

Entertainment by R.M.M.P.S. students.

Favourite "Tea Towel" Competition .....Tell a Story.

Raffles, Trading Table.

Entry - \$5.00.

Please bring some change for voting.

All welcome - why not invite  
your friends to this worthwhile cause?

Enquiries: Carolyn - Anne Boyd: 5425 3194



### The Redesdale Hall Committee Inc.

A.G.M.

is to be held at the  
Redesdale Hall

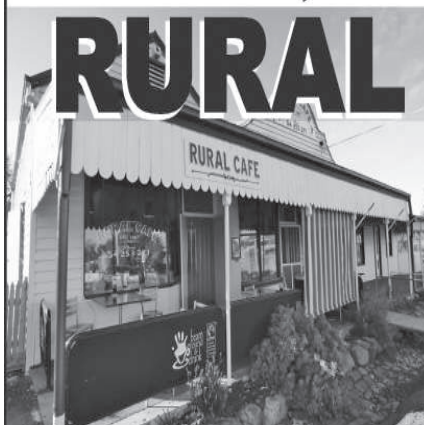
on

Tuesday, 13<sup>th</sup> June, 2017

at 3.00 p.m.

All Welcome.

## Come and try our coffee at the RURAL CAFÉ



In the centre  
of Redesdale

Now serving Norma's  
famous apple pie!

Open 8am to 5pm

A great place to stop for all day breakfast, lunch, excellent coffee  
and fresh cakes.

Phone: 03 5425 3271



# Eucalypts of the Mount Alexander Region

The following article is taken (with permission) from “Eucalypts of the Mount Alexander Region” by Bernard Slattery, Ern Perkins and Bronwyn Silver - published in 2016 by Friends of the Box-Ironbark Forests. [www.fobif.org.au](http://www.fobif.org.au). It is well worth acquiring this little book if you are interested in the beautiful trees that surround us.



Manna Gum, Mount Alexander

## MANNA GUM *Eucalyptus viminalis* subsp. *viminalis*

Manna Gum prefers moister sites with reasonable soil—it's an abundant species on Mount Alexander and along the Loddon River south of Vaughan. It's medium to tall, and usually straight trunked (though older specimens can be grandly craggy).

**Buds** (a) are mostly in threes in a cross formation, with cone-shaped caps. **Flowers** (b) come mainly from March to May. **Fruits** (c) have swelling tops which break to show 3 or 4 valves sticking out.



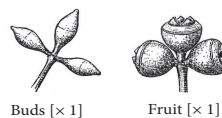
a



b



c



Buds [x 1]

Fruit [x 1]

A quick check: A tree with strikingly pale branches and upper trunk, shedding prolific ribbons of bark, and with narrow, weeping leaves.

## MANNA GUM *continued*

**Juvenile/sucker leaves** (a) are stalkless, paired and spear shaped; the **adult leaves** (b) are narrow and 'weeping'. The **bark** (c) at the trunk base (sometimes persisting quite high) is rough, grey/brown, splitting untidily into ribbons; on the upper trunk and branches it's smooth and pale to white, the ribbons prominent (it's often called 'ribbon gum').



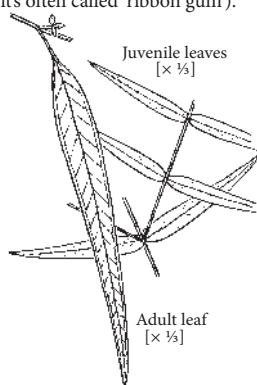
a



b



c



Juvenile leaves [x 1/5]

Adult leaf [x 1/5]

**Note:** The species name, from the Latin *viminalis* 'like a willow', refers to the foliage's weeping habit. Sweet crumbly white nodules ('manna') exuding from insect holes in the bark were relished by Aborigines. The species is common in eastern Tasmania, wetter parts of central and southern Victoria, and southern NSW.

**Similar species:** Candlebark has similar white trunk and branches: its juvenile leaves are greyish and quite rounded, and it sheds its bark in patches rather than ribbons.

**Some notable trees:** Manna Gums are common on Mount Alexander: there are plenty around the Leanganook camping ground there. It's also scattered around wetter parts of Sutton Grange and the Fryers Forest. It is common in basalt areas, where it often has thick dark bark on the trunk, for example, on the Mt Franklin road, between the highway and the picnic ground.



(above) Manna Gum regrowth Mount Alexander

(below) Mature Manna Gums Mount Alexander





## ITS ON AGAIN !



**Sat October 28 , from 11 am  
at the  
Agnes Mudford Reserve  
Teams of up to 5  
Contact: 0428253104  
Entry : \$100 per team  
Proceeds going to  
Redesdale CFA.**

## Please support our Fire Brigade's major raffle

It will be drawn in October. If you can't locate a CFA member with raffle books, call 0428 253 104



Redesdale Fire Brigade

### MAJOR RAFFLE

**1st Prize:**  
**Firefighting Trailer  
& Accessories**



TICKETS 0001 - 0020

## Hall happenings



The afternoon tea dance on April 23rd was an unqualified success.

The new 'Music Man' Rod McKenzie was enjoyed by all the dancers. They all commented on what a great day they had. The committee would like to thank Dorothea Kriewaldt for her wonderful organisation of the day. The next afternoon tea dance is Sunday 24th September.

Our 'Biggest Morning Tea' for the Cancer Council is to be held on Thursday 22nd June - 10am. The theme is 'Tea Towels', so if you have an unusual or special one bring it along and show us all. Entry is \$5, - lovely morning tea. Please bring some change for voting. All are welcome and please bring a friend.

The Redesdale/Mia Mia Primary School children will entertain us with songs and dance which will be very special.

Revellers are in full swing, and the guests are saying "It is the best show ever" but I think they say that every year. It was a great night out!

Norma Barker.

## SUTTON GRANGE HALL MID-YEAR FEAST SATURDAY 24 JUNE 2017 6PM START

### SPIT ROAST

2 course meal with meats, hot potatoes, vegetables, bread and desserts.  
Music and entertainment

**COST: \$32 PER ADULT,  
\$16 PER CHILD AGED 4 TO 12  
CHILDREN UNDER 4 FREE.  
BYO DRINKS.**

We do need numbers in advance along with payments, so if you are interested in this event, please contact

**Vivien**

Sec/Treas Sutton Grange Hall Mgmt Committee

**Mob: 0412 882 402**

Email: vivpells@gmail.com



# BRIDGE CONNECTION COMMUNITY NEWSPAPER

## Advertising Rates/Sizes

Size	Height x Width	Price per issue	10 Editions
Business Card	55mm x 90mm	\$25	\$250
Quarter Page	130mm x 90mm	\$50	\$500
Half Page	130mm x 190mm	\$95	\$950
Full Page	270mm x 190mm	\$175	\$1,750

### Colour Advertisements plus 20%.

Please send editorial or advertising copy to:  
**bridgeconnection.editor@gmail.com**  
 or by post to **866 Coliban Park Road, Redesdale, Vic 3444.**  
 For other editorial enquiries, please phone **0407 116 899**

### Bridge Connection Distribution

800 Copies printed and distributed to Redesdale Mia Mia Region, including Barfold, Baynton, Derrinal, Elphinstone, Glenhope, Kyneton, Langley, Metcalf, Sidonia and Sutton Grange

**Disclaimer:** The Bridge Connection Inc. Committee wishes to advise that the views or remarks expressed in this publication are not necessarily the views of the volunteer Bridge Connection Inc. editorial or production team and no service or endorsement is implied by the listing of Advertisers, sponsors or contributors. Although every effort is taken in reproducing and printing advertisements correctly, we take no responsibility for errors.

## Management Committee

President :	<b>Mary Bennett</b>	(03) 5425 5551
Secretary:	<b>Regina Bennett</b> bridgeconnection.secretary@gmail.com	(03) 5425 5402
Treasurer:	<b>Terry Mackenzie</b>	(03) 5425 3262
Magazine:	<b>Kathy Hall &amp; Regina Bennett</b>	(03) 5425 3272

## SUBSCRIPTION

If you are unable to receive a **RELIABLE** free delivery of the Bridge Connection, you can subscribe for **postal** delivery for \$25 per year



Please contact the treasurer on:

(03) 5425 3262 or email:

**bridgeconnection.secretary@gmail.com**

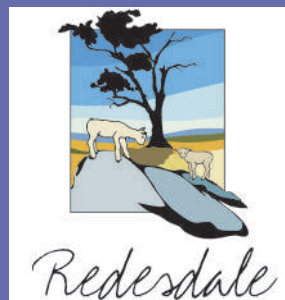
**KEEN TO  
CUT  
YOUR  
HOT WATER  
BILLS  
BY 75%  
???**



Solar Power Solar Hot Water  
Heat Pump Hot Water  
On Grid & Off Grid  
Domestic & Commercial

**energysolutions@breaze.org.au**

**03 4309 4027**



**IT'S TIME TO RENEW YOUR REDESDALE AND DISTRICT  
ASSOCIATION MEMBERSHIP OR TO JOIN UP FOR  
THE FIRST TIME**

**Membership applications can be downloaded from the  
Redesdale website: [www.redesdale.net](http://www.redesdale.net)**

**Bendigo**  
Travel & Cruise Centre

**336 HARGREAVES ST. BENDIGO**  
**[www.bendigotravelandcruise.com.au](http://www.bendigotravelandcruise.com.au)**  
**03 5441 8811**

Find us on 

## Home Town

*My home town is not the place where I live,  
Although it is pleasant and fair,  
But memories belong where childhood was spent,  
And my heart will ever be there.*

*Redesdale is calling over the miles,  
And I follow the road once again  
Through an entrance of pine trees, guarding the way  
Where the wind sings a haunting refrain.*

*Set mid the dreaming valleys and hills,  
And patterned by fences of stone,  
This is my hometown, where I belong,  
And I always will call it my own.*

*Redesdale my hometown is calling to me,  
Wistfully over the miles  
And my heart would respond, but alas! I remain,  
A forever reluctant exile.*

**Nancy Begg**

# The Bridge Abroad

proudly sponsored by Bendigo Travel  
and Cruise 5441 8811



**Bendi**   
Travel & Cruise Centre

## A prize at the end of this year!

Bendigo Travel and Cruise have sponsored this regular section. Next time you go away (Australia or overseas) send us a pic of you or a friend holding a copy of the Bridge Connection and we will enter it for a prize



At a recent visit to the impressive Bress Winery in Harcourt, one of the editors discovered Max Presenti, assistant winemaker, taking time out from assisting at the Mothers Day lunch to read Bridge Connection.

Please send in your own Bridge Connection photographs. Always have a copy in the car - just incase! Eds.

Want an Accountant you can talk to and build a working relationship with?

  
**MACEDON RANGES**  
TAX & ACCOUNTING

TAX SPECIALISTS & BUSINESS STRATEGISTS

I am a reliable, local professional who can visit you at your home, farm or office

Call me for a chat to find out how I can help you.

Christine Greene B.Bus (Acc.), Tax Agent

T: 03 5422 6460 M: 0481 101 455

E: [contact@mrta.com.au](mailto:contact@mrta.com.au)

[www.macedonrangestax.com.au](http://www.macedonrangestax.com.au)



# A good life deserves the best farewell

 **WILLIAM  
FARMER**

FUNERAL DIRECTORS

Andrew and Heather Hampton

151 McCrae Street Bendigo  
12 Victoria Street Eaglehawk

**P: 5441 5577**

[www.williamfarmer.com.au](http://www.williamfarmer.com.au)

*A tradition that continues...*

**Tax Returns**

Open late and Saturdays

**KMATAX**  
& accounting

43B High Street, Kyneton

ph: 5422 3178

mob: 0498 389 184

[www.kmatax.com.au](http://www.kmatax.com.au)



KMATAX & Accounting is a CPA Practice

**BAS Super**



KN195353/W



# Elphinstone

Post Office & General Store

*'In the heart of the  
Elphinstone community'*



- Newspapers/ Magazines
- Origin Gas Bottles
- Bread • Milk & Groceries
- Postage Services

*'The General Store where  
community meets business.'*

Gill & Dave (03) 5473 3200  
9 Bateman Street, Elphinstone

# Palmer Stevens & Rennick

Barristers & Solicitors *Founded 1852*

## Palmer Stevens & Rennick

provide advice to clients all over Australia.

- Powers of Attorney
- Wills and Estates
- Criminal Law
- Conveyancing
- Property Law
- Commercial Litigation
- Family Law
- Migration Law
- Traffic Law and Toll Fines
- Agribusiness Law
- Pre purchase advice for large Agribusiness Assets
- Compensation for Government Acquisitions



Mr Joseph Palmer  
Founder of  
Palmer Stevens & Rennick

8 Jennings Street, Kyneton  
or P.O. Box 1, Kyneton Vic 3444  
Phone: (03) 5422 6500 Fax: (03) 5422 3385  
Email: [psr@psr.net.au](mailto:psr@psr.net.au)

# REDESDALE

General Store



Come in for some  
great tasting...



"Great service in a country  
environment from  
Dino and his friendly team"

OPEN 7 DAYS

DINO

Phone (03) 5425 3154  
2609 Main Road, Redesdale

# RK Earth

Ross Knight Earthmoving

Servicing Mia Mia, Redesdale, Heathcote & District



**'Dam construction, erosion works,  
building sites and general earthworks'**

Over 40 years experience in the district

Phone Ross 0428 843 988

or the office: (03) 5425 5506

Email: [info@rkearth.com](mailto:info@rkearth.com)

Web: [rkearth.com](http://rkearth.com)