



ISSUE NO. 92 March 2018

FREE

For the Mia Mia - Redesdale Region including:

- Heathcote • Derrinal • Glenhope • Baynton • Sidonia
- Barfold • Langley • Sutton Grange • Elphinstone • Kyneton



facebook.com/RedesdaleMiaMia

BRIDGE CONNECTION COMMUNITY NEWSPAPER



The quilt is unveiled!

After 3 years of hard work, the Mia Mia - Redesdale commemorative quilt was unveiled at the ceremony to celebrate the Redesdale Bridge's 150th anniversary. The celebrations were held on January 27th 2018 at the Redesdale Hall. (Pictured are some of the artists and sewers,

L to R: Kathy Hall, Gloria Pocock, Annette Coombe, Wendy Hulls, Judy Firkin and Ruth Booker). The Mia Mia panel (on the left) depicts historical events and human stories. The middle panel is the work of the Redesdale Mia Mia Primary School and the Redesdale panel (to the right) predominantly shows historic buildings. All are joined by farming and wildlife themes. It will be on display at the hall at the Bush Market on March 11th.

Jane Bunn will be guest speaking at our
free Farmer's lunch on Friday 9th March!

Heathcote & District
Community Bank® Branch

 **Bendigo Bank**

bendigobank.com.au/heathcote



Bendigo and Adelaide Bank Limited, ABN 11068049178 AFSL/Australian Credit Licence 237879. S48951-10

Mica Grange Open Garden Sculpture Exhibition

Open each weekend **24 March to 22 April**
Including **Easter Monday 10am to 4pm.**
Group Bookings available during week days.



ENTRY \$6 | Children free

Morning Tea | Lunch
Afternoon Tea | Plants
Garden Art | Preserves
available.

373 Faraday Sutton Grange Road Sutton Grange

For more visit micagrangecom.au

or ph: **5474 8262** mob: **0499 897 242**

KYNETON VETERINARY HOSPITAL



Send us a pet photo with a few sentences and be in the running for a \$100 prize at the end of this year. Send it to:
bridgeconnection.editor@gmail.com

On the right is Dorothy a 6 week old Jack Russell puppy. Soon to live at Coliban Springs. Not quite big enough yet though.



Kyneton Veterinary Hospital

Where animal lovers heal
Call us today 03 5422 1099

SHEPPARTON THEATRE ARTS GROUP'S
PRODUCTION OF

WICKED

THE UNTOLD STORY OF THE WITCHES OF OZ

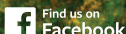
SEARCHING FOR PERFORMERS 18 YEARS AND OVER

Information Night: Wednesday 21 February 2018

Auditions: 16, 17, 23 & 24 March 2018

Show Dates: Friday 21 - Saturday 29 September 2018

More info: www.stagtheatre.com



BIRD QUIZ with NIGEL HARLAND



We might start this year in a slightly different manner, thanks to reader Robin Marks who wrote this:-

"...of more interest was several honeyeaters of the variety seen in this photograph that turned up for two weeks this year when our Callistemon viminalis bushes were in full flower. I didn't recognise them, having seen nothing like them here in the last 40 years.

It seems from my bird books that they are scarlet honeyeaters. Apparently they are migratory, coming down the East Coast of Australia in summer as far south as Mallacoota.

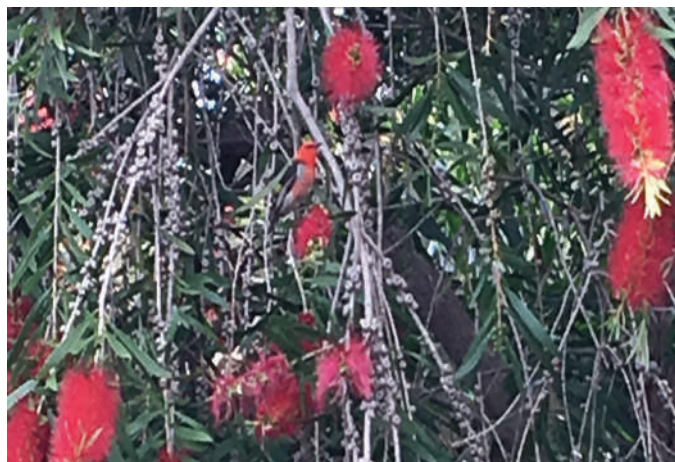
But they are not recorded as coming into central Victoria, as these have done this year.

They stayed about two weeks and then left as blossom on all the trees faded."

The normal distribution is from Northern Queensland to Sydney, with occasional sightings in Gippsland. However there is a characteristic of some birds called an irruption, meaning that the birds are found off course due to sources of food being found out of the normal area. This year has been such a year for the Scarlet Honeyeater and Robin was lucky enough to make a very unusual sighting – well done!

Next month we will revert to our normal format.

Nigel



You can just see the scarlet honeyeater hiding in the callistemons in this photo sent by Robin Marks

Editorial

Hello Everybody!

Happy 2018!

Welcome to a new Bridge Connection year! We hope to see great interaction between readers and the community newspaper this year. In fact the more community interaction, the more likely we are to stay alive!

Special notices in this edition concern the defibrillator, page 7, plans for the the new community plan, page 8, and the updated community contact list on page 22. We are reconsidering the "Bridge Abroad" section as we have no current sponser. It seems a shame to let it go. We have loved it. What do you think?

The Munro Letters continue. We know there are a lot of readers who really appreaiae this authentic local history. This month is especially poignant regarding our weather!

Please feed back to us - good or bad - we want to know.



Regina Bennett



Kathy Hall

Co-Editors

Kathy Hall

Regina Bennett

Ph: 0407116 899

e: bridgeconnection.editor@gmail.com

BRIDGE CONNECTION COMMUNITY NEWSPAPER

Advertising Rates/Sizes

Size	Height x Width	Price per issue	10 Editions
Business Card	55mm x 90mm	\$25	\$250
Quarter Page	130mm x 90mm	\$50	\$500
Half Page	130mm x 190mm	\$95	\$950
Full Page	270mm x 190mm	\$175	\$1,750

Colour Advertisments plus 20%.

Please send editorial or advertising copy to:

bridgeconnection.editor@gmail.com

or by post to **866 Coliban Park Road, Redesdale, Vic 3444.**

For other editorial enquiries, please phone **0407 116 899**

Bridge Connection Distribution

800 Copies printed and distributed to Redesdale Mia Mia Region, including Barfold, Baynton, Derrinal, Elphinstone, Glenhope, Kyneton, Langley, Metcalf, Sidonia and Sutton Grange

Disclaimer: The Bridge Connection Inc. Committee wishes to advise that the views or remarks expressed in this publication are not necessarily the views of the volunteer Bridge Connection Inc. editorial or production team and no service or endorsement is implied by the listing of Advertisers, sponsors or contributors. Although every effort is taken in reproducing and printing advertisements correctly, we take no responsibility for errors.

**Please Note:
COPY DEADLINES
20TH OF EACH MONTH**

Management Committee

President :	Jill James	0418 388 919
	lill@colibanestate.com	
Secretary:	Regina Bennett	(03) 5425 5402
	bridgeconnection.secretary@gmail.com	
Treasurer:	Terry Mackenzie	(03) 5425 3262
Magazine:	Kathy Hall & Regina Bennett	(03) 5425 3272

CONTENTS

Regular articles	Page	Special articles	Page
Advertising rates	3	Chris Moule Exhibition	4
Bird Quiz	2	Community Plan	8
Church Services	7	Regional Centre for Culture	9
Dr Tim	20	Kerry Anderson	18
Editorial	3	Historic Bridge- Tahlia Campbell	13
Farmers' markets	12	Little Treasures - poem Wendy Hanbury	21
Garden Patch	14 & 15		
Primary School Report	16		
Hall Happenings	18	Notices	
Heatcote Happenings	13	Sutton Grange Hall events	4
Letters to Editors	12	Redesdale Bush Market	5 & 8
Local Contact List	27	Defibrillator	7
Pet Pals	2	Otis Trivia Night	8
Politics	8 & 9	Precinct Update	11
Quote of the month	8	District Association Update	11
Rainfall	7	Contact List	22
Recipe of the month	19		
RRRC Chairman's report	17		
Subscription	21		
The Munro Letters	6		
What's on in Heathcote	13		

Redesdale Hall FOR HIRE



Amenities are available for catering, meetings, weddings and club or family celebrations.

Please phone

Carolyn (03) 5425 3194 for more information.

Redesdale Hall Activities:

- 1st Monday monthly, 4.15pm, Bridge Connection Committee meeting
- 2nd Tuesday monthly, 1pm - Hall Comm. Meetings.
- 2nd Tuesday monthly, 7 pm - Rec. Reserve Meetings.

Roaster for Hire

Commercial sized roaster available for hire from the Redesdale and District Association.

\$75 for members and \$100 for non-members.

(Free hire to Hall, Rec. Reserve Committee, and CFA)

Phone **0418 130 206.**



VISIT THE NEW REDESDALE WEBSITE

www.redesdale.net



THE REDESDALE HOTEL

*Kyneton-Heathcote Road
Redesdale*

*PRESENTS
'A BRUSH WITH NATURE'*

*AN ART SHOW FEATURING THE WORK OF LOCAL
AWARD-WINNING REALIST ARTIST
CHRIS MOULE*

*VIEW 38 OIL PAINTINGS, WATERCOLOURS AND PEN AND
INK DRAWINGS FEATURING LANDSCAPES BOTH LOCAL
AND INTERSTATE.*

*ENJOY THE EXPERIENCE WITH A GLASS OF WINE OR TEA
ON THE TERRACE OR WHILST WAITING FOR YOUR LUNCH
OR DINNER IN THE RELAXED AMBIANCE OF THE
DINING ROOM.*

*OPENING HOURS: 11 AM TO 11 PM
WEDNESDAY TO SUNDAY*

*FOR MEAL BOOKINGS PHONE 03 4405 0601
FREE ENTRY TO ART SHOW*

Sutton Grange Hall Events

Sunday April 1st - Easter egg hunt and hot cross bun morning tea

April 14th - Bingo. 7 pm start. \$5 for a card. Supper provided to follow.

April 25th - Anzac Day Memorial Ceremony. 11 am start at Cenotaph followed by morning tea.

May 5th - Movie - Title TBA. 7 pm start. Bring your family to share a film. Bring supper to share.

May 19th - Redesdale Revellers 7 pm start. 3 course meal and thater review. To book, see below.*

June 19th - Bingo and Pizza. Start 6 pm. \$10 per card includes pizza.

July 14th - Mid-year Feast. 6 pm start. A catered dinner of 2 courses. Details TBA.

August 4th - Trivia night. 7 pm start. \$5 per head for participants. Supper provided. Prize for winning table.

August 27th - AGM. 7.30 start. All welcome. Bring ideas for management and events.

September 1st - Sports night. 7 pm start. Table tennis, carpet bowls etc. bring supper to share.

September 22nd - Fun night 7 pm start. Games. bring a plate for supper.

October 21st - treasure hunt. 10 am start. \$2 per child, \$5 per family. Morning tea provided.

Nov 10th - Bingo. 7 pm start. \$5 per card. Supper provided. Prizes for winners .

December 2nd - Christmas Tea. Satrt 6 pm. bring a main and desert to share. Santa visits at 8 pm.

* Redesdale Revellers contacts: Mavis Collison 5474 8230, Steve Barty 0417 524 713.

REALIST REVIVAL CHRIS MOULE

With pictures in private collections all over the world Chris Moule is a realist artist who reinvigorates the tradition creating works which reflect his love of landscape and nature.

He loves to paint en plein air and explore subjects in a range of mediums which include oil, pen and ink, acrylic, pastel and watercolour, drawing inspiration from the natural beauty of the Australian landscape. His depictions of the Australian bush, creeks, rivers, beaches, bridges and mountain ranges capture the changing light on canvas with pleasing complexity and an impressive eye for detail.



Chris's pen and ink drawing of McClure's Bridge is on permanent display at the Castlemaine Art Gallery demonstrating his unique ability to put nature in a frame and give others the pleasure of the history of the changing landscape.

In a recent work commissioned by an Indian couple for their mother's wedding anniversary Chris was asked to incorporate an Australian scene and something which would be acceptable in India. Chris painted people playing beach cricket at Airey's Inlet, successfully incorporating an area of common ground for both countries.

His love of art started at an early age. His father was a scenic artist at Covent Garden and for the Doyley Carte Opera Company and was also Technical Advisor to the BBC Television Company and he sometimes let Chris dabble on the foot of backdrops.

Chris did scenic art at school, designed and painted scenery for the Springvale Opera Company's South Pacific, as well as taking the part of Lieutenant Cable. Later he was commissioned to paint a large canvas for the 150th anniversary of Thorpdale Primary School. It was to be an authentic Strezlecki forest scene with the correct flora and fauna. After spending days in the forest sketching and observing, he turned up at the appointed time to start the commission, only to find the canvas was 8m x 5m – a little larger than anticipated. He painted Ironbarks, Blackwoods, Mountain Ash and 192 tree ferns on the canvas – a labour of love.

In the last year, Chris has won three first prizes and People's Choice awards for his pen and ink drawings and has been commissioned to paint a landscape of plantings by Landcare in the Mt Alexander Shire. He has also had commissions for a collection of his pictures to go to Poland and a customer from Singapore bought several of his miniatures. Chris has also been invited to demonstrate and paint in Shanghai.

The winner of many awards, including an 'Art in the Street' competition in Bendigo, Chris is also an art teacher, member of the Bendigo Arts Society, avid photographer, bushwalker with an interest in tennis, badminton, gardening, dancing and singing.



Redesdale Bush Market - Sunday, 11/3/2018.

Agnes Mudford Reserve, 2631 Kyneton - Redesdale Rd, Redesdale, 3444.

The Redesdale Hall Committee Inc. are holding their annual Bush Market in 2018 on the Labour Day long weekend at the "Agnes Mudford Reserve", offering something of interest for all ages.

The Committee are pleased to announce that the "Bendigo and District Concert Band" will once again be entertaining the crowds, preceded this year by "The Floyd Black Band".

Children's Entertainment includes Face Painting, an Animal Farm and a Jumping Castle. Several Car Clubs will be displaying their vehicles on the day, with room for more.

The Market begins at 9.00 am and finishes at 2.00 pm on Sunday, 11th March.

***Please Note - Limited sites are still available.

Car Clubs and individuals with a classic car are invited to call in and display their vehicles.....always very popular! Car Clubs please phone Carolyn on 5425 3194 to ensure that we save enough space for you.

***Enjoy a wide selection of stalls, ranging from local produce including olives, honey, jams, chutneys, preserves, herbs, spices, cake stall and plants, through to clothing - new, pre-loved and vintage, fishing tackle, tools, art, photography, jewellery, candles, craft items, crochet, bags & baskets, glassware, crockery, bric a brac, food stalls, devonshire tea, ice cream, great coffee and lots more!

The Redesdale Hall Committee Inc. are honoured that the three special quilts created for the recent "Redesdale Bridge" 150th Birthday will be displayed inside the air - conditioned Hall this year.....perhaps a nice accompaniment to the delicious & tempting Devonshire Teas on offer!

Why not invite your family and friends along to explore this very picturesque area in Central Victoria and make a day of it? Bring along a picnic rug or chair, enjoy the music and take in the local surroundings. (Please note that the weather can be quite different to other areas - sometimes drier!) If in doubt, it's a good idea to check with the Weather Bureau.

All Welcome!

Outside Stalls Available - \$25.00 (Pre-paid). Public Liability Insurance is required and available if needed at a nominal price. Bookings and Enquiries: Alwyn - 0419 513 976 or Carolyn-Anne - 03 5425 3194. * Like & Share Us on Facebook: "Redesdale Bush Market 2018"**** Proudly Sponsored by: "The Rural Cafe" "Macedon Ranges Signs" "Hardwicks Meats" "Kyneton Auto Spares and Repairs".

Elphinstone

Post Office & General Store

*'In the heart of the
Elphinstone community'*




- Newspapers/ Magazines
- Origin Gas Bottles
- Bread • Milk & Groceries
- Postage Services

*'The General Store where
community meets business.'*

Gill & Dave (03) 5473 3200
9 Bateman Street, Elphinstone

REDESDALE

General Store

 POST Fully Electronic Postage Service	Come in for some great tasting...  Coffee	 Weekly NEWS Newspapers & Groceries
Banking Facilities 	Full alcohol licence and bottle shop with local wines. 	Takeaway Food Service 
Fuel & Oil 	Under new managment: Jagrut Patel with 'Winston' and 'Gotham'	

OPEN 7 DAYS

Hours: **Mon-Tues** 8am to 5pm | **Wed-Sun** 8am to 6pm

Phone (03) 5425 3154

2609 Main Road, Redesdale

THE MUNRO LETTERS

Episode 11

We continue the 1842 letter from David Munro to bother Alex in Scotland.

Now as far as my memory serves me, and I read his work with some care, I do not recollect that any caution of this sort is suggested to the reader, that he is left to infer if he chuses that the country as described by Mitchell is in its normal condition. In this way, his glowing descriptions have imposed on many at home and have concurred with puffs circulated from the most selfish motives to delude many to this country, where they now find themselves in what in my opinion is a most miserable and degraded position.

Nor is it to be wondered at that people at home were deceived in this respect, when even old colonists were imposed upon. You remember that I told you that many squatters had gone out to look for this fine country but had not succeeded in finding it, and the consequence is that Major Mitchell has earned for himself among many a distinction which in the forcible but not carefully selected language of the bush is commonly expressed by a word of two syllables which begins with an 'h' and ends with a 'g' and has a vowel 'u' in juxtaposition with both these consonants.

I shall now for your instruction make a few remarks on the physical geography of this country in general, a subject of great importance and having an immediate relation to its resources and prospects. The first thing that strikes the person who looks upon it in this light is the remarkable sameness through such an immense extent of the territory. It is true that the part of it which has been seen is only a very small fraction, but there the coast has been navigated and there are several circumstances which justify us in speculating with regard to the interior of the country, and give an appearance of great probability to the opinion formed of it by the most intelligent. If you look into the narratives of Captains Cook, King and Grey, who have examined parts of the coast most remote from one another, you find a most striking similarity. No one reading their description can fail to recognise Australia in any of them. The vegetable productions vary considerable according to the degree of latitude, and the animals slightly, but everywhere you find the same average height of land and the same geological structure, an immense preponderance of sandstone rocks.

In the part of the country that is settled and well-known, the following is the arrangement and it is a very peculiar one and well worthy of your attention.

From the furthest point north at which the country is wee known, viz the Morton Bay district – a ridge of hills is observed to run parallel to the sea coast at an average distance of 60 or 70 miles. The summit of this ridge is often a species table land, forming in the Morton bay district the Darling Downs, and further south, New England. Behind Sydney, this range is called the Blue Mountains. Further south it seems to acquire its greatest development in the Snowy Mountains at the source of the Murray and the ranges of Gippsland a country which is the most hilly known in Australia. It then turns off to the westward still following the line of the coast and is called the Mount Macedon range

behind Port Philip. It is seen as the Grampians in the Portland Bay district and finally sinks down to the lower level country through which the Murray River finds its way to lake Alexandrina. This range of hills is frequently called in the colony the dividing range and it is so in the strictest sense of the word, for the water which falls upon its summit is parted in opposite directions, finding its way into the sea on the east coast by short channels but on the west side, finding its way by rivulets which unite to form larger streams into the Murray which drains the whole of New South Wales on that side of the dividing range as far as is yet known. But in another sense it may with equal justice be called a dividing range for there is the greatest difference between the

country on its seaward and that on its landward side and this you can easily imagine. We all know that the sea is the great reservoir of atmospheric moisture which is drawn upwards from it by the sun and deposited in rain upon the land principally by the agency of n Mountains, which either by their superior cold or by electrical agency not well understood effect its condensation. Showers will fall upon the country between the sea and the dividing range and upon the dividing range itself, but inland from this country, being level and low, there is nothing to attract or form clouds, and rain will seldom fall there.

This is the point of fact that everyone in the colony knows, whether he reflects upon the cause of it or not, and when I was at H's station, which is about 30 miles inland from the ridge where the water is shed, I have over and over again seen clouds come up from the sea and break about Mount Macedon

in refreshing showers, and though apparently they were approaching in our direction, nothing reached us. They melted into the hot blue sky. The existence of this range of hills parallel to the sea coast within which this country sunk down to a lower level was observed a great many years ago and gave rise amongst the early speculators upon the physical geography of this country to the opinion that Australia was in space something like an shallow basin that the water that fell upon its surface drained into the interior and formed there a large lake or marsh. This opinion, if you recollect, was strengthened by the expedition of Mr. Oxley who thought that he found that the Lachlan and the Macquarie rivers terminated in a marsh, which, however, has been since found by Captain Sturt not to be the case, and it is now known that the Murray is the drain of the whole of the south east part of Australia within the coast range.

Subsequent investigations on the coast have shown that the rim of the basin does not exist on all parts of the coast. For instance, Capt. King found a great part of the north shore to be low land, and Flinders found the same in what is called the Great Bight of Australia between Spencers Gulf. and Cape Leewin. But even without this demonstration there was one circumstance which if it had been taken into account and reflected upon would have gone far to prove that the interior of the county could not be covered with water.

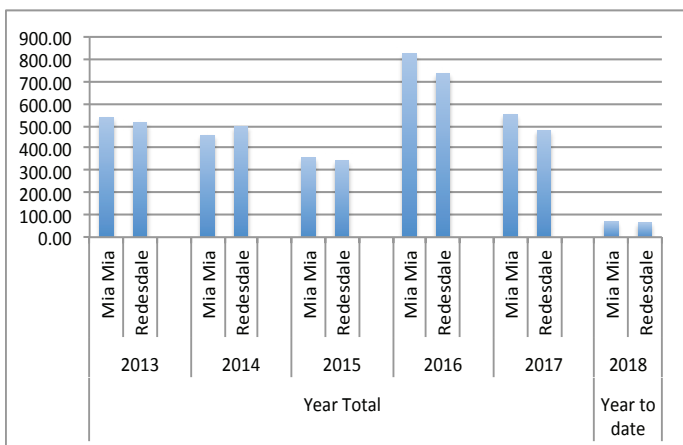
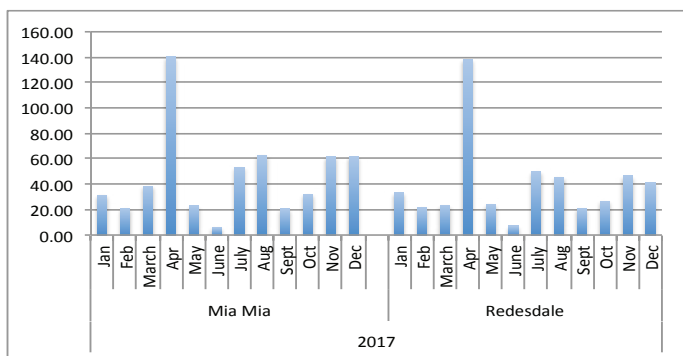
Next month:

I allude to those hot and excessively dry winds...



RAINFALL

The average yearly rainfall for Redesdale is about 601mms.
Thank you to Mary Bennett for the Mia Mia readings.



QUALITY FARM SHEDS

Machinery
Hay Sheds
Stock Shelters
Shearing Sheds

Barns
Horse Arenas
Workshops
Garages

Building Quality Farm Sheds since 1975

CENTRAL
steelbuild

T/A Central Vic Sheds

1300 955 608

8 Hoyle Court, Kyneton

Make your special celebration a **PARTY TO REMEMBER!**

Party Hire Equipment For Hire

Tables - 183cms rectangle

Plastic Tables - \$5 each

Chairs - White plastic - \$1 per day

Umbrellas - Charcoal \$5 per day

Table Cloths - White - \$2 each

Many more
party items
for hire to
have your
occasion
organised
& stress free.

For more information please call 0418 130 206

CHURCH SERVICES

UNITING CHURCH

Barfold: 1st Sunday of each month
Metcalf: 2nd Sunday of each month
Mia Mia: 3rd Sunday of each month
Sutton Grange: 4th Sunday of each month

Morning tea is served at each of these Uniting Churches at 10.45 am and services start at 11 am. If there is a 5th Sunday in the month, services may be found at Kyneton.

CATHOLIC CHURCH

Redesdale: 2nd Sunday of each month 11 am



DEFIBRILLATOR

The Community owned defibrillator is now accessible to all community members.

It is situated on the outside wall of the CFA building (next to the Rural Café).



creative
designs
for your
business

logos menus flyers posters
invitations brochures magazines
business cards advertisements
letterheads with compliment slips
full business imaging

lyn ingles | graphic designer
blupen@ncable.net.au
0429 911 980

Sponsoring the 'Bridge Connection'


blue
blue pencil publishing

Sunday
11th MARCH
9.00am-2pm

Redesdale

BUSH MARKET

CHILDREN'S ENTERTAINMENT



Redesdale Hall @ the Agnes Mudford Reserve
 ~ Outdoor Stalls Available ~
 Enquiries: Alwyn - 0419 513 976 or Carolyn-Anne - 54253194

Otis Foundation

Trivia Night



Fun Night For Charity

Saturday April 7th
7pm
Redesdale Hall

With plenty of Prizes & Giveaways!
All profits go to the Otis Foundation
Breast Cancer Retreats

Tables of 10 (or we will make up a table for you)
\$20 per head, \$10 for children under 16

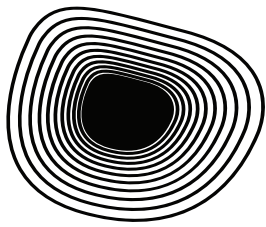
BYO Snacks & Drinks
Contact Andrew on: 04 28253104

Redesdale Community Plan

Have your say!

It's that time again! It's been 5 years since the last community plan was written and it is time to come up with new ideas for our community.
A date has been set for
Sunday April 22nd at 3 pm.
Please come.
Afternoon tea will be provided. Below is the theme that underlies the 2013 community plan.

"Redesdale residents aim to achieve a town which is safe, invitingly landscaped, welcoming to tourists, clean and tidy, and where people of all ages work and socialise well together. They require good, functional facilities for activities and meetings and easy access to necessary services." (Community Plan Review 2013)



REGIONAL CENTRE FOR CULTURE

The Regional Centre for Culture in 2018 is an initiative of the Victorian Government through Creative Victoria, in partnership with the Dja Dja Wurrung Aboriginal Clans Corporation, Central Goldfields Shire, City of Greater Bendigo, Hepburn Shire and Mount Alexander Shire. The year's activities have already kicked off with our official launch on Wednesday February 10 in Bendigo. The night's entertainment was drawn from all over the four participating municipalities, and drew couples, families and everyone else along for a party in Rosalind Park. The highlight of the evening was a moving ceremony of song and dance by Traditional Owners, the Dja Dja Wurrung and the announcement of YAPENYA, a celebratory event that will be taking place on November 17.

We are delighted to be working closely with both Visit Victoria and the ABC Central Victoria. You may have heard the ABC's live outside broadcast from Rosalind Park on February 14 during the afternoon drive program from 3pm to 4pm hosted by Fiona Parker. Visit Victoria has committed to promote four tourist itineraries around region in March, June, August and November. We are currently working to develop the communications for these itineraries (known as "Meander") which will be focused on encouraging visits to stay in the region for 3+ nights and to move across the region sampling its cultural activities of all kinds: food, arts activities, natural wonders and more.

www.rcc2018.com is now densely populated with performances, exhibitions, markets, festivals and more - it's genuinely awe-inspiring to be able to observe the wealth of activities taking place in this inaugural Victorian Regional Centre for Culture. 2018 got going with RCC-supported events Maldon Twilight Dinner and Newstead Live. The RCC is also directly supporting Harcourt's Applefest, the Taradale Mineral Springs Festival and Arts Open. On March 3, one of the RCC's key community events will take place in Newstead. Entitled Water Hole, this event will feature a parade created by the local school children, a compliments caravan, performances by local and other artists and a performance of In the Deep End by Asking for Trouble who will perform in the Newstead and District Swimming Pool. The highlight is expected to be a community dance-off featuring the volunteer committees of Newstead.



Proudly printed in Kyneton

Castlemaine, Kyneton & Gisborne
CopyCentre
Printing together for our community

Design & Pre-press
Plan Scanning, Finishing Services.

*Not just a Copy Centre...
we are so much more.*



www.windarring.org.au

58 Mollison Street
Kyneton
03 5422 2400

Farmer pleads guilty to animal cruelty charges

A 65 year old farmer from Miners Rest, near Ballarat in Victoria, has been fined \$20,000 with conviction in the St Arnaud Magistrates Court for offences under the Prevention of Cruelty to Animals Act 1986.

The farmer pleaded guilty to 27 charges of aggravated cruelty of cattle and four charges of failing to provide his cattle with proper and sufficient food in the Donald area in North West Victoria.

He was also sentenced to 100 hours of community work under a Community Corrections Order, and subjected to a court order requiring him to have independent veterinary oversight of his farm for five years.

Do you know a young jobseeker?

In the next couple of weeks, a new Green Army team will be starting work in Maldon and surrounding areas. (This is an exceptional circumstance due to an election promise, as the Green Army Program is no longer around.) The team will be working with Landcare groups in the area to do planting, mapping, monitoring and weed control, with a particular focus on Wheel Cactus.

IMG_4583 If you know any jobseekers between the ages of 17-24 years, please encourage them to contact Mark Green from Manpower ASAP – phone: 0406 321 274, email: mark.green@au.manpower-group.com

Steph Ryan MP

Member for Euroa

WWWstephryan.com.au

Funded through Parliament's Electorate Office and Communications budget



Roads Minister ignores CFA concerns over wire rope barrier

Roads Minister Luke Donnellan has today failed to acknowledge the concerns of local CFA brigades over the dangerous placement of wire rope barrier on regional highways.

Member for Euroa and Deputy Leader of The Nationals Steph Ryan questioned the Minister in Parliament today over disparaging comments he has made about country Victorians with concerns about wire rope barrier.

The Nationals also questioned the Minister over reports from CFA brigades at Broadford and Elphinstown who believe fires spread much further than they should have because poorly placed wire rope barriers prevented them from gaining access.

"Luke Donnellan continues to ignore the concerns of local brigades and vehemently defend his blanket rollout of wire rope barriers," Ms Ryan said.

"He is treating country people like we are ignorant, or in his own words, 'banjo playing dingbats'.

"These are legitimate concerns from volunteers with years of experience in dealing with fires on these roadsides."

Ms Ryan said Broadford CFA captain Jamie Atkins had raised his concerns with her following a car fire on the Hume Fwy.

Mr Atkins said the fire should have been no more than a quarter acre fire but quickly spread to 10 acres after the brigade struggled to gain access.

"When we raised these concerns with the Minister in Question Time, he again refused to acknowledge them."

Last week Ms Ryan joined Opposition Leader Matthew Guy to announce that the Liberals and Nationals would halt the rollout of wire rope barrier if elected in November.

Ms Ryan is circulating a petition calling on the government to take immediate action to redirect money from the rollout to country roads maintenance.

"More than 500 people signed the petition at the Seymour Expo on the weekend and momentum is growing," Ms Ryan said.

"If Luke Donnellan really wants to save country lives he will start treating country people with respect by listening to the concerns and lived experiences of the people using these roads."

Steph Ryan (03) 5762 1600 or 0488 441 820

Fox scalps and wild dog skins to be collected again as bounty resumes

Thousands of scalps are expected to be collected across the state as the fox and wild dog bounty resumes for 2018.

In Bendigo, the first collection centre will be held on March 5, with the following to be held monthly at the Epsom depot.

"We are expecting larger numbers of scalps and wild dog skin pieces over the first few months of collections due to the stockpiling of body parts over summer and early autumn and a peak in fox hunting activity as young, vulnerable and displaced juvenile foxes move around the landscape," Agriculture Victoria's John Matthews said.

"Eligible participants can submit entire fox scalps for a \$10 reward and entire wild dog skin pieces for a \$120 reward during scheduled collection times."

Historically, the Epsom collection site has been one of the largest in the state, with more than 75,000 fox scalps handed in since the introduction of the bounty in 2011.

It comes in at second, with 85,497 scalps collected at the Ballarat depot. But numbers are falling across Victoria, with only 2320 scalps handed in during the second half of last year in Bendigo, compared to 7540 in the 2016-17 financial year.

It's a long way from the 15,506 collected in the second year of the bounty.

A spokesperson for Agriculture Victoria said reports of fox sightings typically tended to spike at this time of the year, as young naive foxes were displaced from their territories and juvenile foxes were on their own, no longer supported by the family group.

"They are commonly observed during day or night searching for food, shelter and a new territory," the spokesperson said.

The pests are also common in city environments, as well as rural, with one resident last year claiming there was a fox epidemic in Bendigo killing her chickens.

A cheeky one also held up races at the Bendigo Jockey Club in September when it made its way onto the course.

More information on the Victorian fox and wild dog bounty, including collection centre location and dates, can be found online at <http://agriculture.vic.gov.au/agriculture/pests-diseases-and-weeds/pest-animals/fox-bounty> or by calling 136 186.

CONNOLLY GLASS

- Broken Window Repairs • Mirrors
- Balustrades • Splashbacks
- Shower Screens: Framed
- Semi Frameless & Frameless
- Retro Fitted

Double Glazing & Commercial
Window Frames & Glazing

0428 535 101

177 Lyell Road, Redesdale. Vic. 3444

Email: chrisjen@bigpond.net.au

Redesdale Community Precinct Project Update March 2018

As you may recall from the Precinct Detailed Design Working Group update late last year, the Redesdale Community Precinct Project is waiting on the city council selecting a suitable consultant to prepare a detailed design document for review by the community.

Due to delays in the council's procurement process we are yet to have a consultant appointed so no further progress has been made on the design development at this point in time. We are hopeful that the consultant will be selected shortly and the next phase of the design and consulting process can commence. Please keep an eye out for activities as they start to happen in future editions of the Bridge Connection or the BC facebook page.

If you have any queries regarding the project please contact the DDWG co-ordinator John Beurle on 0422001924 or john.beurle@gmail.com or if he cannot be contacted, ring 0407 116 899.

Redesdale and District Association report

The Redesdale and District Association had its first meeting of the year on February 15th. The meetings are always held at the school where members of the committee sit on tiny little chairs amongst charmingly colourful student projects. It is a real opportunity to mingle with school personnel and bridge that divide between the children of our community and the more senior citizens who tend to have the time for community committees.

Having said that, the association has encouraged younger people to become part of the process from the very start and would very much welcome younger input at any stage.

The association always starts its meetings with updates from other community committees; the fire brigade, school, reserve committee, hall committee, Bridge Connection, website management and membership management.

Following the updates we discuss correspondence and the treasurer's report. At the moment, because we have stopped charging membership fees, the association is low on funds and so will be holding a "trash and treasure stall" at the Bush Market on March 11th. All contributions gratefully received!

The general business of the meeting covered feedback from the unveiling of the quilt and plans for its future, and feedback from the 150 year bridge celebration - which was all very positive. The next task of the association is to organise putting together the next community plan in association with the City of Greater Bendigo. The date has been set for Sunday April 22nd at 3 pm for a community workshop.

The next District Association meeting is on Thursday March 15th. Please feel free to either come as an observer or to send in questions or agenda items. This is your association and it is not just for Redesdale, it is for the district as well.

Kathy Hall
Secretary
Redesdale and District Association
info@redesdale.net

stone axe estate redesdale | heathcote



- fine red wines, top quality olive oil, chutneys and jams
- all the fruit in the products is grown organically on the property

Contact **Heather Carmody** for purchase, order form or tasting on **0402 818 125** or at **heathercarmody1@gmail.com**

stoneaxe.com.au



Federal Member for Bendigo

LISA CHESTERS MP

PO Box 338 Bendigo 3552
Cnr Williamson & Myers Sts, Bendigo 3550

T: 034 5443 9055 • F 03 5443 9736
E: Lisa.Chesters.MP@aph.gov.au

Twitter: @LMChesters • Facebook: /LisaChestersBendigo



Federal Labor funding commitment for Bendigo TAFE

Federal Member for Bendigo, Lisa Chesters MP is today announcing Federal Labor's funding for Bendigo TAFE and the local vocational education sector.

"A Shorten Labor Government will make TAFE the centerpiece of our training system by guaranteeing at least two-thirds of all Government VET funding goes to local TAFEs including Bendigo TAFE," said Ms Chesters

The announcement also includes \$100 million for revitalising campuses across the country.

"Central Victorians, like most Australians, love TAFE and many started their careers in a TAFE or trade-based apprenticeship."

Labor's TAFE funding guarantee comes at a "time when local industries and businesses such as advanced manufacturing, automotive, health and hospitality industries are crying out for more skilled workers.

I know from talking to local school-leavers and their families, there are simply not enough apprenticeship and traineeship opportunities in Bendigo and Central Victoria.

"The latest figures released by the National Centre for Vocational Education and Research (NCVER) show the devastating impact Federal Liberal Government cuts have had on apprenticeship numbers.

For more information on Labor's plan go to <http://www.alp.org.au/laborbackstafe>

Contact: Paul Seidl 0431 264 705

Letter to the Editor

Dear Editors,

The sesquicentenary celebration of the Redesdale Bridge held on 27th January attracted a large crowd of very interested people. Congratulations to all who worked so hard to bring it to fruition. The videos, photos and stories brought back many memories.

The quilt is quite magnificent and the ladies who put in all the hard work planning and sewing are to be especially congratulated. It was a great talking point on the day, with people searching for the places they know and remember.

As it was such a hot day it was very nice to be in the lovely air-conditioned hall for the event, and to catch up with people not seen for a while.

Thank you again.

Norma Barker.



Letter to the Editor

Dear Editors,

I am writing to say how much we enjoyed the Redesdale Bridge sesquicentenary celebrations at the Redesdale Hall on Jan 27th.

It was such a lovely happy morning and we thoroughly enjoyed the video recordings and all the wonderful displays.

So much time and thought had gone into the preparations. The highlight was undoubtedly the unveiling of the magnificent quilt.

My family and I feel very honoured that Nancy Begg's poem 'Home Town' was embroidered on the Redesdale panel.

I wanted to take this opportunity to say a big thank you to the lovely ladies for their amazing work and for including her poem.

I feel very proud to be Nancy Begg's niece and be connected to this community.

There truly is something special about Redesdale.

Kind regards,

Sue Pearson



FARMERS' MARKETS

Woodend Community Farmers' Market

Sat March 3rd
Cnr High & Forest Streets, Woodend
0487 444 090 Sharon Kittson

Daylesford Farmer's Market

Sat March 3rd
Daylesford Primary School
03 5664 0096 Peter Arnold

Kyneton Farmers' Market

Sat March 10th
St Pauls Park, Piper Street, Kyneton
54 221 025 Veronica Manifold

Riddells Creek Farmers' Market

Sat March 17th
Riddells Creek Primary School, Riddells Creek
0408 254 626 Ali Bant

Lancefield & District Farmers' Market

Sat March 24th
Centre Plantation, High Street, Lancefield
0407 860 320 Meggs Hannes

Maldon Market

Sunday March 11th
Authentic, community based farmers' markets.
BYO bags, baskets & trolleys.
Friendly dogs welcome on a leash.

Proudly accredited with the Victorian Farmers' Markets Association. www.vicfarmersmarkets.org.au

Turn your house
into a home
with Tucks
locally made products



Quality



& Style

- Aluminium and Timber Windows
- Window Replacements • Security Doors
- Shower Screens • Wardrobe Doors

We are in your area regularly and offer a **FREE** measure and quote service.

We can offer supply and install prices.



**Tucks
Windows
BENDIGO**

Celebrating 43 Years
providing top quality
products and
professional
friendly service.

P: 03 5446 8855 E: tuckswindows@impulse.net.au

www.tuckswindows.com.au

An historic day for our beloved bridge

By Tahlia Campbell

The Redesdale Bridge is so much more than a landmark, it also happens to be one of Australia's oldest bridges. 150 years ago, it made its home in our district, and this year it was celebrated with great festivities.

The 150th Anniversary celebrations took off at the Redesdale Hall on the 27th of January, where the colourful history of the Bridge was laid out on the walls, accompanied by incredible photographs that illustrate just how spectacular the structure is. Speeches were made by the Member for Euroa, Steph Ryan, and the Honorable Professor Howard Nathan QC, AM. Both speeches beautifully conveyed how prominent the Bridge is in people's memories, and what it means not just to our community, but to anyone who passes through.



The Recollections video, created by Michael Robinson, looked back on the highs and lows of the Bridge's history, with insight from locals Brian and Jill James, Jim Coombes, John Barker and Mary Bennett.

The official opening of the Redesdale Bridge, which was christened by the shire president's wife, was recreated on film and presented on the day. Andrew Campbell led the charge, joined by Kathy Hall and Barbara James in full period costume. Alison Campbell, the wife of former Bendigo Mayor Rod Campbell, kindly stepped up to christen the Bridge with a wine bottle.

The Redesdale Hall was filled to the brim with people. Proud locals made up a good number of the crowd, but groups coming from Bendigo and all across the state made it to the Hall to celebrate this momentous occasion.



Every Wednesday until advised – Heathcote Historical Lock-Up and Police Residence Museum - The Museum is now open to the public every Wednesday from 10am –12:00 noon. Join a guided tour with a gold coin donation to the Heathcote Historical Society and learn more about the history of Heathcote.

Friday 9th March 2018 – Heathcote Night Market -Time: 5pm-9:30pm. Contact phone 0400 675 995 Venue: Barrack Reserve, High St, Heathcote. This is a part of a series of twilight markets run by the Lions Club. The market typically comprises about 40 Stall holders including local wineries, craft beer, food vans, local produce, live music and entertainment, including activities for the kids.

Sunday 17th March 2018- Twilight Opera at Mia Mia – Mia Mia Mechanic's Institute is delighted that their favourite opera singers, Mattia and Michelle, are returning to Mia Mia Hall on 17 March 2018 between 6pm and 9.30pm. Tickets are available at www.trybooking.com/RXFZ; Early bird price is \$55.00 or \$65.00 after January 31st. Ticket prices include food from 6pm, performance between 7pm to 9.15pm with a gourmet supper to follow. Enquiries can be made by calling 0419525101.

Sunday 18th March 2018- Swags, Snags & Tucker Bag- at Bridgeward Grove, 170 English's Road, Goornong. 12pm – 4pm. Relive the history of the iconic Australian story, Waltzing Matilda, through a unique marionette performance, "Swagman's Luck". Meet swagman Frank and his bush friends while partaking in genuine hospitality in an authentic country setting. Enjoy a traditional swagman's menu with locally grown produce and an opportunity to purchase local wines, ciders and crafted beer from the fully licensed bar. Relax in our shaded olive grove or join in the fun Swaggie games. Pop a picnic blanket in your swag and come Waltzing Matilda.

Sunday 18th March 2018 - Mimosa Glen presents: Women in Balance- Look forward to a blissful day of Yoga, for all levels of experience. From 9am – 1.30pm experience 2 Yoga sessions, 2 meditation sessions and a delicious, healthy lunch. Participants will need to bring their own water bottle, yoga mat, pillow and soft blanket. All inclusive Cost is \$97. Onsite accommodation is also available by prior arrangement. Bookings close two weeks prior to the event and must

be pre-paid. For all enquiries, please call Sue on 0438568570 or see the website at www.mimosaglen.com.au. Additional dates are indicated below and all sessions will take place at Mimosa Glen, 2415 Lancefield-Tooborac Rd, Tooborac.

Friday 23rd March 2018- Engine Room – Production of 'All My Love' - HIT Productions Time: 8pm. Cost \$10. RSL Hall High St Heathcote Friday 30th March 2018 – Seafood Nights are back! - \$120 per person. Heathcote Harvest, 32 Tuscan Court, Heathcote. Book ahead to avoid disappointment – 0466 542 329.

Friday 30th March 2018 - Roman Middleton Charity Golf Day - Time: 10:30am assembly for an 11am shotgun start. 4 Person Ambrose-\$120 per team. Food and drinks available on course only. To secure your Team please register by March 1st. For all enquires, including sponsorship opportunities contact: David Clouston on 041 752 4358 or email: roman.middleton@hotmail.com Please note no alcohol is permitted to be served in Victoria before midday*. Venue: Heathcote Golf Club Patterson St Heathcote.

Saturday 7th April 2018 – Heathcote Bush Market Time: 8am-1pm. Barrack Reserve, High St, Heathcote. Phone: 0400 675 995 for enquiries or to register a stall.

Friday 20th – 22nd April 2018- Bendigo – Sanguine Estate Music Festival- Summary Program as follows: Friday 20th, 7.30pm – Welcome Concert at the Bendigo Art Gallery Saturday 21st, 11am – Coffee Concert at the Capital Theatre Saturday 21st 2pm – Recital at the Capital Theatre Saturday 21st, 7.30pm – Gala Concert at Ulumbarra Theatre, a glass of wine from 6.45pm Sunday 22nd, 11am - Violin Recital at the Capital Theatre Information, individual tickets or weekend passes are available and can be purchased on line at www.thecapital.com.au. Alternatively, general enquiries can be emailed to info@chrisshowlett.net.au or via telephone on 0408339145.

Redesdale Ramblings:

Lycoris – a different sort of Spider-lily

Most gardeners know about nerines which come from South Africa and are commonly called “Spider-lilies” as are *Lycoris* a genus of similar flowers which come from Asia, in particular China and Japan. They also get called “Surprise Lilies” as they can appear quite suddenly at the end of summer – usually after a rain storm. The “Golden Spider-lily”, *Lycoris aurea*, is sometimes considered like a “yellow nerine” and included under nerines in some nursery lists! However they come from very different climates and you’d expect them to require a lot more water than we can supply. Strangely enough they seem to have adapted to our gardens and a few varieties do quite well here in Redesdale. The first to flower in our garden is *Lycoris incarnata* which is known as the “Peppermint Spider-lily” because its pale pink flower with darker stripes reminding some people of peppermint candy (below).



It usually comes into bloom in mid-to-late February and is closely followed by *Lycoris radiata*, the “Red-Spider Lily” with tomato-red flowers on tall stems. The petals curl backwards and the stamens protrude forwards giving the flower-head a particularly spidery look. I’ve been told that these do best where they get water all through the year - in fact they’re often seen at the edges of paddy-fields in Japan. However in our garden the best flowering clump is in the rock garden which only gets water when it rains unless the dry persists into autumn and we haul the sprinkler over to this area. Many spring bulbs start their root growth in autumn and if we have a dry-spell it can curtail their flowering so we resort to irrigation. In general however I think this is one of those plants that thrive on neglect as long as they don’t get overgrown by

more vigorous plants.

The “Golden Spider-Lily” also grows here and comes up in March making quite a statement with its brilliant yellow flowers.



Lycoris elsa is a softer colour, verging on apricot and gets called the “Champagne Spider-Lily”. In a cluster of blooms the effect can be almost luminescent. These are bulbs that we are told “resent disturbance” so plant them, burying the entire bulb just below the soil level (they don’t need their “necks” exposed the way nerines prefer), mulch with gravel and expect to see leaves in autumn/winter which will die down in summer and with luck you’ll get flowers the following year... or the year after... or maybe not for a few years – they need to “settle in” but really they are deciding whether or not they like where you’ve put them and are getting enough food to produce a flower. If they enjoy the conditions they will bulk up by developing offsets, slowly increasing in number.

I’ve never found viable seed on any of the above varieties but the “Electric Blue Spider-lily”, *Lycoris sprengeri* (below and top right), has set seeds when hand-pollinated. The common name is a bit misleading as the flower is mostly pink but has inky-blue tips which can seep down into the rest of the petals.



One of the most common species grown in America is *Lycoris squamigera* which they

call the “Hardy Amaryllis” because it looks similar to the Belladonna Lily (*Amaryllis belladonna*) and can be grown in colder areas. I seem to remember an episode of the TV Show “Dennis the Menace” where his neighbour was in competition with another gardener to have the first of these in flower but his garden helper had planted the bulbs upside down! I’ve tried this one previously but they did not enjoy the same conditions and died out. I’d consider getting them again and planting them where they get a bit more summer water.

There are a number of other species which may be in Australia and they may be worth searching out.



Cheers
Fermi de Sousa
The Redesdale Rock Gardener



Lycoris radiata





Hello again,
Dear Readers.
Lady Bombay
has returned
for yet another
season of fun
and frivolity
amongst you
horticulturally
minded and
then a bit more.



As I sit here humming Mantovani's "Charmaine", I ponder over the last few months at Mia Mia Manor and relish in the delights of growth that has exceeded my expectations considering the onslaught of heatwaves that have come upon us. Considering it is the summer, one must expect this outcome. But fear NOT. The other side of the coin can be translated to a plague of Flannagan and Allen "Run Rabbit run, run, run". Those ghastly little imports have taken far too many liberties for even those of European peerage. Little dents in the soil which makes parts of the property look like a collective of putting greens. They do not even eat the buddleias anymore which cause them to lose their eyesight and of course the foxes would have their way with them. Not even a fox to be seen when you need them. Lets

face it, there are only so many recipes one can do in the bunny boiler. For those of you with children, explain that not all rabbits are cute and cuddly and live in hutches. Look at Peter, even Mr McGregor was after him. My next angst now that the humidity has diminished are the wasps again. As I am forever telling Thorn, the gardener, to be vigilant of developing or existing nests, what do I incur upon entering through the conservatory's curtains, but a wasps nest! It decided to land on me, and Thorn, the gardener was standing behind me wearing my wide brimmed Henley hat and veil. In these situations, make a rapid but composed dash to the medicine cabinet, not for Mothers ruin. That will come later, straight to the tea tree oil. Very soothing for stings, although Lord B said, "good god old girl, have you got some tropical disease?". I replied with "speak to Thorn, the gardener". I now need to wear the hat and veil even to the supermarket so as not to draw too much attention to myself. I keep buying jars of honey and tell everyone at the checkout quite loudly, "not as good as mine" holding it up so everyone can see. "A plague on both your houses"-Romeo and Juliet. Thorn, the gardener, keeps telling me that there are rats and mice around his cottage and I keep telling him Lord B and I

have mice in the pantry. We have laid four sprung controlled traps with peanut butter on them and several boxes of Talon. It seems to be doing he trick as Lord B keeps on timing the intervals between traps going off whist reading Country Life. Maybe I should time the intervals his pipe ash hits the carpet.

I recently went in my dear old Bentley to the city to visit my dear friend Prunella Hopkins-Smythe who wanted to show me her house and garden makeover. The house had been painted from heritage green to a blue/grey colour which apparently is all the fashion. The garden was as neat as a pin with pruned buxus and camellias all balanced and very forthright. My one chagrin was the designer mulch. Never heard of such a thing and it was black. Looked like Hiroshima after the big bang. That's the difference between the country gardener and the city gardener. Between the growth, the wasps, rabbits, no foxes, mice and rats, I think it's time for Mother ruin which I am told is good for fighting off malaria. So what I save on not buying aeroguard, I shall put towards Mother's

ruin.
Have a Happy Eggs and Bilby Easter to one and all.
Lady Sapphire Bombay

Bombay and a Bex

Send in your questions for Lady Bombay Sapphire to
bridgeconnection.editor@gmail.com

Dear Lady B,
My husband bought a flat pack pergola which he has put on our deck. It looks very nice but I am in a quandary as to what type of climber to train up it to tone it down a bit? I was thinking of wisteria as I love their flowers.

Gloria Gazebo

Dear GG,

On no account plant a wisteria unless the pergola is constructed by a registered builder. Wisteria tends to gain a lot of weight particularly during its flowering.

I speak from experience when Lord B and I went to a friend's house for lunch under their shop-bought pergola which had wisteria in flower. It was a short lived lunch as the pergola came crashing down on not only Lord B, but it also came down on my quiche and salad. Far too heavy for the structure. Not the quiche, the wisteria. I would suggest something that's easy to control; The Banksia Rose (Rosa Banksiae) There are quite a few colours to choose from. Please make sure that it is not close to a septic tank as its roots can travel and I won't accept any lunch invitations from you.

Upwards and over, *Lady B*

Garden Lore

A garden can be a place of sweat and toil, but perhaps the most important thing is to remember to enjoy it!



Do you require firewood cut,
rubbish removed
or a tree lopped?
We do that too...
call us for a quote.



Les 0481 232 896

GRASS SLASHING

creative
designs
for your
business

logos menus flyers posters
invitations brochures magazines
business cards advertisements
letterheads with compliment slips
full business imaging

lyn ingles | graphic designer
blupen@ncable.net.au
0429 911 980

Sponsoring the 'Bridge Connection'





Redesdale Mia Mia Primary School



Term 1

We have had a wonderful start to the year with all the students settling in to another great year of learning.

Congratulations to Gabe, our school captain for 2018.

We have been setting good examples of how to read appropriately and building stamina in our reading and writing sessions.

We welcome Miss Carly Mitchell to the school. Carly will be teaching Tuesday to Friday.

Mondays is our cultural day. After recess we have Bu Mac, our Indonesian teacher for the day.

Also this term we have our swimming program in Kyneton and the Heathcote Games.

Christine, Bernadette, Joe, Carly and Alyssa.

Phone - 5425 3155; **Principal - Joe Sebire**
Email - redesdale.mia.mia.ps@edumail.vic.gov.au

Redesdale Recreational Reserve Committee Inc. Chairman's Monthly Report March 2018

Hi Redesdaliens,

We are now well into 2018 and plenty has happened since my last report in November 2017. Firstly the CoGB had asked for expression of interest for the Precinct project from three consultants prior to the Christmas period and results were slow in coming, as a result a second expression of interest has been sought in the new year with results known at the next DDWG meeting, yet to be organized.



Prior to the Xmas break the Reserve Committee was successful in securing a grant of \$7645-00 from the FRRR to install solar power to the pavilion, which will be installed by the end of February. Well done Committee.

The celebration of 150 years of the "Redesdale Bridge" was held at the hall with an overwhelming attendance by the community and visitors from near and far, congratulations must go to the volunteers who organized the day. The ladies who organized the making of the quilt, that was unveiled on the day, should be so proud of their achievement. This will be treasured as a part of Redesdale & Mia Mia's history for future generations.

Early January saw the film night, which I must say was a bit of a non event, which is a shame as the amount of work by the committee outweighed the participation rate of the community compared to last year, having said that it was funded by the CoGB and many thanks to them for their efforts.

As part of our fund raising efforts a concert was held at "Rocklands" by "Mitch", (Music in the Central Highlands) with the venue donated by Gary & Pan Prendergast, we were able to hire the reserve's chairs and mobile toilet facilities, which raised in the vicinity of \$300-00 for

the reserve. A great day was enjoyed by around 60 people listening to the jazz sounds of the "Wild Bunch". Many thanks to Pan & Gary for the fantastic venue and day.
Keep smiling until next month.

Les Pocock.

Redesdale Recreational Reserve Committee Inc.

"MITCH" Music in the Central Highlands



MITCH (Music in the Central Highlands) held their summer concert at Gary and Pan Prendergast's property in North Redesdale Road on Sunday, 18th Feb. A collective of musicians called Wild Bunch from the Mt Macedon Region performed and featured 2 young performers from the Central Highlands, Sophie Cox 14 on the guitar and Katie Secker 17 - vocals.

Some 86 people listened to the music and songs from New Orleans origin under the shade of the grand oak trees providing welcomed shade on the day and enjoyed a relaxing wine and an impressive array of food at the halfway interval.

A very relaxing, enjoyable day was experienced by all those who attended.

Gary Prendergast

Mica Grange Open Garden Sculpture Exhibition



Merging the wonders of art with the beauty of garden is the theme behind the Mica Grange Open Garden Sculpture Exhibition.

The autumn exhibition shows more than 60 creations from 16 sculptors plus a wide range of garden art and plants. The exhibition focuses on providing garden lovers with new ideas on how they can add to the beauty and enjoyment of their own gardens.

Small and large pieces are available with prices ranging from

\$10 to \$7000 so there is something for everyone. Preserves from the orchard and vegetable garden are also available.

Morning Tea, lunch and afternoon tea are served on the decking with its superb views across the Sutton Grange valley. The autumn Open Garden and Sculpture Exhibition starts 24 March and is open each weekend to 22 April plus Easter Monday.

Entry is \$6, children free. Open times 10am to 4.00pm
Group bookings are available during week days. For more information including spring dates visit www.micagrangecom.au or phone 54748262, 0499897242.

What: Mica Grange Open Garden Sculpture Exhibition;
When: Each weekend 24 March to 22 April plus Easter Monday
Where. 373 Faraday Sutton Grange Rd. Sutton Grange.
Entry \$6, children free

Vision and Determination

BY KERRY ANDERSON

Over the summer my aim has been to write more stories about rural businesses, gathering information for my second book. As always, I am incredibly inspired by every business owner I meet. I am also reminded that with a bit of vision and determination you can achieve so much.



Have you ever wondered how to milk a camel? When I heard that the Camel Milk Co Australia was kicking goals over near Kyabram I took the drive one very hot January morning just in time for milking. The 'how' was very interesting and a short video I posted got thousands of views. But the really big question I had to ask was "Why?"

Chris and Megan Williams explained how they met in a pub at Alice Springs and fell in love with camels while working on an outback station. After returning to Victoria where Megan's parents were dairy farmers, they started looking for something a bit more niche and profitable to get into. By this time, married with three little boys, they just knew that it had to be something on the land so they could enjoy a rural lifestyle.

Milking three camels as a trial created an instant waiting list of customers alerting them to huge markets in our capital cities where migrants from the Middle East consider camel's milk to be part of their staple diet. From modest beginnings in 2014 with three camels on 100 acres, Chris and Megan have expanded their business to nearly 250 camels on 480 acres with plans to expand even further. Not only

that, they are now exporting their product overseas taking advantage of Australian camels' disease-free status.


Every other interview has been equally inspiring. Tom Curtin from Katherine in the Northern Territory saw the bottom drop out of his horse breaking business when the Live Export Trade was suddenly halted in 2011. Putting his musical talent to work he started performing at the local caravan park and, combining music with his horse training skills, went on to establish the Katherine Outback Experience show which is now touring Australia wide.

Every interview reminds me that those people who have an ability to look at existing landscapes with fresh eyes are helping to invigorate our rural communities.

You can read these stories in full at: www.kerryanderson.com.au




Chris and Megan Williams



The ALBION

KYNETON



Come and enjoy the experience that is The Albion Kyneton

The Albion offers a fine selection of local wines and famous beers on tap. Local produce from the Macedon Region is carefully prepared for classic Italian dinners. Children are catered for with a special menu just for their discerning palates.

The Albion is ideal for functions or parties. and offers indoor restaurant and outdoor courtyard dining.

Hours of Operation:
7 Days a Week 12noon till Late
• **Lunch** 12noon to 2pm • **Dinner** 6pm to 9pm

Phone for bookings **(03) 5422 2066**
Email drinkanddine@thealbionkyneton.com.au
1 Mollison Street, Kyneton Vic 3444
www.thealbionkyneton.com.au

Hall happenings



We are preparing for the Bush Market to be held on Sunday 11th March at the 'Agnes Mudford Reserve'. It will be a great chance to see the Redesdale Mia Mia quilt which will be on display in the hall.

Rehearsals have begun for the Redesdale Revellers. This year is the 30th series of shows.

The Redesdale Bridge 150th celebration held in the Hall on 27th January attracted a large crowd, and it was a relief to be in our air-conditioned hall for the event as it was around 40deg. outside. The day was a great success, and special congratulations to the quilters of Redesdale, Mia Mia and the School for the fabulous quilt.

We have an afternoon tea dance planned for April, - more about the date next month.

Norma Barker.

RECIPE OF THE MONTH

29

Chilled Tomato Soup

This month's recipe is from Barfold's Peg Higginbottom whose name you will recognise from all the prizes she wins for her cooking at the Kyneton Show!



- 1 kilo tomatoes peeled and chopped
- 1/2 cucumber coarsely chopped
- 1/2 onion coarsely chopped
- 1 red capsicum chopped
- 1 clove of garlic
- 1 teaspoon of cumin
- 2 tbsp chopped coriander
- 1/2 cup verjuice or sherry vinegar
- 1 cup water
- 2 slices of sourdough bread
- salt & pepper
- olive oil to finish

Using a stick blender blitz the vegetables, herbs, spices & bread
Add water & verjuice and blitz in a few pulses until thick but still a little chunky
Chill for 60 minutes
Serve, drizzled with oil and scattered with fresh coriander.

Thanks, Peg!

Quote of the month:

"Half of the American people have never read a newspaper. Half never voted for President. One hopes it is the same half."

Gore Vidal

ENTERTAINMENT CONSULTING PRESENTS
AUSTRALIA'S LEADING OPERA & MUSICAL THEATRE STARS
LIVE IN CONCERT
The 2 of Us
DAVID HOBSON MARINA PRIOR
UP CLOSE & PERSONAL

Capital Theatre Bendigo
Sat 28 Apr 18
limited tix left!

The Redesdale Hotel



Classic Country Pub Dining

**For bookings
please call (03) 4405 0601**

Monday - Closed
Tuesday - Closed

Wed to Sun • Lunch 12noon - 2.30pm
• Dinner 6pm - 8.30pm

The Redesdale Hotel
2640 Heathcote-kyneton Road
Redesdale, Vic, 3444



The Redesdale Hotel

info@theredesdalehotel.com.au

redesdalehotel

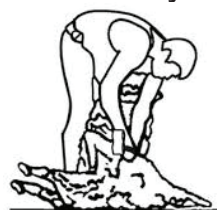


www.theredesdalehotel.com.au

Sheep Shearer Available

Pets and small mobs.

Very careful and reliable.



Phone John on
0466 812 563
or email banbrae1@
bigpond.com

Come and try our coffee at the

RURAL CAFÉ



In the centre
of Redesdale

Now serving Norma's
famous apple pie!

Mon - Thurs 8am-4 pm
Fri - Sun 8am-5 pm

**A great place to stop for all day breakfast, lunch, excellent coffee
and fresh cakes.**

Phone: 03 5425 3271

Prostate health

I've heard it said many a time that life is so much easier for men, which I think is quite fair given all the periods, perils and pain associated with fertility and child-bearing.

However there is just one single small organ, which for some men reproduces similar experiences of pain, immodesty and ignominy. It is the prostate, that walnut-sized gland sitting quietly below the bladder, year on year, apparently doing not much, until it starts its mischief. From walnut-size it can grow alarmingly to many times its original size and can make life pretty uncomfortable in the process.

Please pardon my dreadful generalisations for a moment to compare. Women get up at night to feed babies, men get up at night because of enlarged prostates. Women lose bladder control because of babies, men lose bladder control because of enlarged prostates. There is nothing more painful than a baby's head stretching every pelvic part to its limit during childbirth, other than the pain of a bladder stretched beyond the size of a baby's head, because of an enlarged prostate. You can be sure the Creator has some sense of fairness!

All this male discomfort caused by a gland that is quite simply overgrown - termed in medical-speak "Benign Prostatic Enlargement" - I'm not discussing cancer at all now.

The "climax" of this prostatic enlargement is total bladder obstruction - with the bladder bigger than a babies head as mentioned above. This is a real medical emergency - without quick relief the back-pressure on to the kidneys can result in kidney failure in short order. Thankfully it



Your Health!

with

Dr Tim

is almost always a very simple 5 minute procedure to pass a catheter into the bladder to relieve that pressure.

Once the emergency is passed, what next? Thorough assessment is required - is the prostate gland truly benignly enlarged or is cancer a possibility? Is there an infection that has contributed to the problem? Is medication interfering with the proper functioning of the bladder? Or perhaps the "straw that broke the camels back" is simply a sudden "mechanical" stress on the bladder outlet - from a rapidly filling bladder or bowel pressure. All of these factors and others need to be considered in planning further treatment.

A hurried visit to the urologist to organise a "rebores" of the prostate is not necessarily the answer to the obstruction problem - though in some cases of course a hasty operation is entirely appropriate. By managing correctable issues such as infection or medication matters, surgery can sometimes be successfully delayed or avoided completely, a most welcome outcome.

Now let's think about the opportunity for a more preventative approach to the problem of benign prostate enlargement. Usually there are symptoms to suggest that the prostate is enlarging, well before the pain of a completely obstructed bladder. There's the getting up at night, the difficult urination, dribbling, stopping and starting, or frequent and unavoidable urge to visit the toilet - any of these symptoms are good reason to seek the advice of your local GP for further assessment. Indeed earlier treatment of prostate enlargement can sometimes be useful to stop further growth of the gland in its tracks, and greatly relieve the associated symptoms. Men - it's time to talk toileting!

Dr Tim Stobie 5422 1397

Kyneton Medical Centre
Knowledgeable. Modern. Caring.



Left: the clever projection of Red Dog True Blue onto the mobile screen.

Right: Four members of the Reserve Committee, Lindsay Booker, Gary Prendergast, Rod Gibson, and les Pocock.

Below right, movie-goers of the reserve.



It's true that not as many people turned up for the outdoor film night as did last year, but those who did were treated to a really good movie on a stunningly beautiful evening. It was organised by the Reserve Committee and the grounds were impeccable. There were refreshments and popcorn for those who wanted to add to their own picnics. Speaking to people about the relatively low attendance revealed that it may have been better to have started later in the evening when it was darker, and it may have been scheduled too close to the Christmas period (Jan 4th), or perhaps it was just that not many people knew about it.

This event was only the second at the Redesdale Agnes Mudford Reserve so it may be that people will look out for the event if it becomes regular. The event is free and is part of the City of Greater Bendigo's "Summer in the Parks" program. Look out for it next year. It will be advertised in the Christmas Bridge Connection and will be on the redesdale.net website.



Little Treasures

We are continuing to invite stories about objects that are dear to our readers. We would love to hear from any of our readers about any inanimate object in your life that means a lot to you and that you really treasure. And send us a picture too.

Please send your contributions (about 500 words) to bridgeconnection.editor@gmail.com. We look forward to hearing from you.

This month we were lucky enough to receive a poem by Wendy Hanbury who is a well-known and esteemed local resident. We think this falls into the category of "Little Treasures" as most men with a shed would identify with these words. Sheds are treasured sanctuaries. Thank you very much, Wendy.

A Blokes Shed

At the bottom of me garden,
Stands me little shed.
It is me safest haven
When all is done and said!

Me Missus can be yelling
"When will yer chop me wood?"
Naughty thoughts of anger quelling
As I rest there safe and good.

"I know yer there, ya lazy B!"
Her tones are getting strident!
I close the crack, don't want to see
Her angry face, if it is widened!

Now I settle back in me chair,
And reach for me handy bottle.
It is me private little lair.
Of time there I spend lottle!

Her angry ways, her screaming fits;
I didn't know when we were wed
That she'd nearly drive me from me wits!
Didn't know I'd need a shed!

"I know yer there, ya lazy coot!
"I'm takin' to me bed!"
As if I really give a hoot!"
Thank God I've got me shed!

Wendy Hanbury



BOOTCAMP

\$10
a session
First session
is **FREE!**

TUESDAYS
6.30pm - 7.15pm
THURSDAYS
6.30pm - 7.15pm
at Redesdale Hall

SATURDAYS
7am-7.45am
at Redesdale
/Mia Mia
Primary School

Get Motivated, Healthy & Strong! Increase Energy and Endurance
Gain Confidence, Lose Fat, Inches, Weight **BE SOCIAL and HAVE FUN!**
All Fitness levels welcome! Come along, bring a drink bottle, a towel and
prepare to have fun and be puffed! **ARE YOU READY TO MAKE A CHANGE?**

JESSICA CARR 0402 018 783

SUBSCRIPTION

If you are unable to receive a **RELIABLE** free delivery of the Bridge Connection, you can subscribe for **postal** delivery for \$25 per year.

**YOUR
BRIDGE
CONNECTION !**

Please contact the treasurer on:
(03) 5425 3262 or email:
bridgeconnection.editor@gmail.com



Profits leap for sheep and beef producers

Average statewide farm profits were the highest in over a decade according to the 2016-17 Livestock Farm Monitor Report released today.

Agriculture Victoria Farm Business Economist Paul Deane said sheep producers experienced the greatest improvement in economic performance, with merino wool prices outperforming red meat prices.

"The Livestock Farm Monitor Report analyses the financial performance of 75 farms in Victoria's key livestock regions of south-west, Gippsland and northern Victoria.

"We found that Victorian livestock farm profitability improved markedly in 2016-17, with some farms achieving record profits.

"High commodity prices for wool, lamb and cattle coupled with above average rainfall and pasture growth in parts of the state resulted in a strong increase in gross farm incomes and profits," he said.

"Victoria's south-west and northern regions experienced a greatly improved pasture growing season, however seasonal conditions were varied in Gippsland.

"Sheepmeat, wool and beef cattle production are vital to Victoria's strong and growing economy, with approximately one third of the gross value of all agricultural production in Victoria coming from sheep and beef cattle industries," he said.

Mr Deane said the outlook is for another potentially very good year for sheep producers in 2017-18, with both lamb and merino wool prices closing 2017 around 30 per cent higher, compared with December 2016.

Mr Deane said there is good evidence that re-investing in the farm business can achieve a high return on investment as a direct result of increasing the productive capacity of the existing farming system.

For further information on these programs please contact Agriculture Victoria's Meat and Wool Program Manager Kate Linden on (02) 6030 4565.

LOCAL REDESDALE / MIA MIA - CONTACT LIST

FIRE REPORT A FIRE 000

VIC BUSHFIRE INFO LINE
1800 226 226

REDESDALE FIRE BRIGADE

- Secretary - Lee Mason 0422 055 278

MIA MIA FIRE BRIGADE

- Captain Calvin Millard 0409 979 037 A/H: 9744 6745
- Mia Mia Fire Brigade Secretary - Steve Cadasch 5425 5548

LOCAL ORGANISATIONS

BRIDGE CONNECTION MAGAZINE

Editors: Kathy Hall	0408 116 899
Regina Bennett	0437 514 223
Bridge Connection President - Jill James	0418 388 919
Bridge Connection Treasurer - Terry Mackenzie	5425 3272

MIA MIA MESSENGER Enquiries 5425 5565

Mia Mia Hall Committee - Wendy Hulls	5425 5590
Mia Mia Mec. Inst. Secretary - Wendy Hulls	5425 5590
Mia Mia Mec. Inst. President - Anthony Ryan	5425 5578
Mia Mia Reserve Comm. Secretary - Anthony Ryan	5425 5578
Mia Mia Reserve Comm. Chairperson - Grant Hulls	5425 5590

Otis Foundation	5444 1184
-----------------	-----------

Redesdale and District Assoc. Inc - Kathy Hall (Sec.)	0407 116 899
Redesdale Hall Committee - C. Boyd (Sec)	5425 3194
Redesdale Hall Hire - C. Boyd (Sec)	5425 3194
Redesdale Rec. Res. Cttee - Lindsay Booker (Sec)	0448 021 544

Suicide Bereavement Service - 'Standby' 0439 173 310

Tennis Club - Linda Newnham	0400 554 716
-----------------------------	--------------

TOWNSHIP BUSINESSES

Redesdale Hotel - Beth & Garth	03 4405 0601
Redesdale General Store - Dino Tomisic	5425 3154
Rural Café - Elizabeth and Shane	5425 3271
The House Gallery - Ray & Joyce	0408 154 315

COUNCILLORS

City of Greater Bendigo - Eppalock Ward

George Flack	0429 083 993
Marg O'Rourke - Mayor	0429 061 096
Yvonne Wrigglesworth	0429 117 600

POLITICIANS

Federal Member for Bendigo - Lisa Chesters (Labor)	5443 9055
State Member for Euroa - Steph Ryan (Nationals)	5762 2100

REGULAR ADVERTISERS

Bootcamp	0402 018 783
Central Victorian Sheds	1300 955 608
Connolly Glass	0428 535 101
KMA Tax	5422 3178
Kyneton Toyota	5421 0210
Les - Grass Slashing	0481 232 896
Lisa Chesters	5443 9055
The Optometrist	4411 6802
Party Equipment for hire	0418 130 206
Palmer Steven & Rennick	5422 6500
Redesdale Hotel	4405 0601
Redesdale General Store	5425 3154
RK Earthmoving	5425 5506
Roaster for Hire	0418 130 206
Rural Café	5425 3271
Steph Ryan	www.stephryan.com.au
Stone Axe	0402 818 125
Tha Albion	5422 2066
Travel Centre	5442 1522
Todd Property	5433 2288
Tucks Windows	5446 8855
William Farmer Funeral Directors	5441 5577

ORGANISATIONS

City of Greater Bendigo	5434 6000
Macedon Ranges Shire	5422 0333
Mitchell Shire Council	5734 6200
Mount Alexander Shire	5471 1700
POWERCOR	132 412

SPONSORS *Without their support our community would not thrive - Thank you!*

Bendigo Travel and Cruise	03 5441 8811	Kyneton Copy Centre	03 5422 2400
blue pencil publishing	0429 911 980	Kyneton Veterinary Hospital	03 5422 1099
Elphinstone Post Office & Store	03 5473 3200	Redesdale General Store	03 5425 3154
Heathcote Community Bank 1300 236 344			



REGIONAL
CENTRE FOR
CULTURE

2018 - welcoming #wonder2018

In addition to what's already going on anyway in the region this summer - the Time of Reverence, here are a few specifically RCC events for your diaries - everyone's invited!

Artist-led Live Arts organisation Punctum will be staging their Nomadic Public Cooling House in Castlemaine's Botanic Gardens (March 2 -4 & 10 -12).

In Bendigo get to the Scots Day Out (March 3) for a fun-filled showcase of all things Scottish or view Finnish cool at the Marimekko exhibition at the Bendigo Art Gallery (March 3 - June 11). Step into the studios of artists in and around Castlemaine at Arts Open (March 10 - 19) and join in the festivities over at the Harcourt Applefest (March 10) and the Taradale Mineral Springs Festival (March 11).

Make a note of the special RCC performances coming to a local market or festival near you....in Hepburn Shire at the Bullarto Tractor Pull on March 11 and in Central Goldfields Shire at the Creswick Farmers Market on March 17 and Talbot Farmers Market on March 18.

#wonder2018 #rcc2018 www.rcc2018.com



A good life deserves the best farewell

**WILLIAM
FARMER**

FUNERAL DIRECTORS

Andrew and Heather Hampton

151 McCrae Street Bendigo
12 Victoria Street Eaglehawk

P: 5441 5577

www.williamfarmer.com.au

A tradition that continues...

Todd PROPERTY

Real Estate Sales
& Property Management
with Service.



Brad Todd
Director



Barb Walker
Property Consultant



Kristy Webster
Property Consultant

'We help make dreams a reality'

5433 2288

95 High Street Heathcote

OPTOMETRIST NOW OPEN IN HEATHCOTE

Open for appointments **TUESDAYS & FRIDAYS**

Great frame range - complete glasses from \$99

59 High Street Heathcote

For appointments please phone: **4411 6802**



THE OPTOMETRIST

Heathcote

Kyneton Toyota



TOYOTA

"We are Proud to support
Bridge Connection
& the local Macedon Ranges Community"

JUST OFF THE FREEWAY!

"Proud to have LOCALS in the
Drivers Seat"



Oh what a feeling!

kynetontoyota.com.au | 03 54 210 210

Palmer Stevens & Rennick

Barristers & Solicitors *Founded 1852*



Palmer Stevens & Rennick

provide advice to clients all over Australia.

- Powers of Attorney
- Wills and Estates
- Criminal Law
- Conveyancing
- Property Law
- Family Law
- Agribusiness Law
- Commercial Litigation
- Traffic Law and Toll Fines
- Appearing in Castlemaine Court
- Pre purchase advice for large Agribusiness Assets
- Compensation for Government Acquisitions



Mr Joseph Palmer
Founder of
Palmer Stevens & Rennick

8 Jennings Street, Kyneton
or P.O. Box 1, Kyneton Vic 3444
Phone: (03) 5422 6500 Fax: (03) 5422 3385
Email: psr@psr.net.au

RK Earth

Ross Knight Earthmoving

Servicing Mia Mia, Redesdale, Heathcote & District



**'Dam construction, erosion works,
building sites and general earthworks'**

Over 40 years experience in the district

Phone **Ross 0428 843 988**

or the office: (03) **5425 5506**

Email: info@rkearth.com

Web: rkearth.com