

The truth exposed !



Redesdale's John Beurle opens the "truth window" at his passive sustainable house.


Having a dear friend (late Barfold Estate wine maker Craig Aitken) discover their dream country location, John Beurle and Kym De Lany embarked on building their straw bale passive home on the shores of Lake Eppalock near Redesdale. Traditional straw bale homes typically have a 'truth window' showing off the straw somewhere in the home. John and Kym chose to honour Craig's memory by using the top of one of his wine barrels as their straw bale truth window, just outside their front door. See page 12

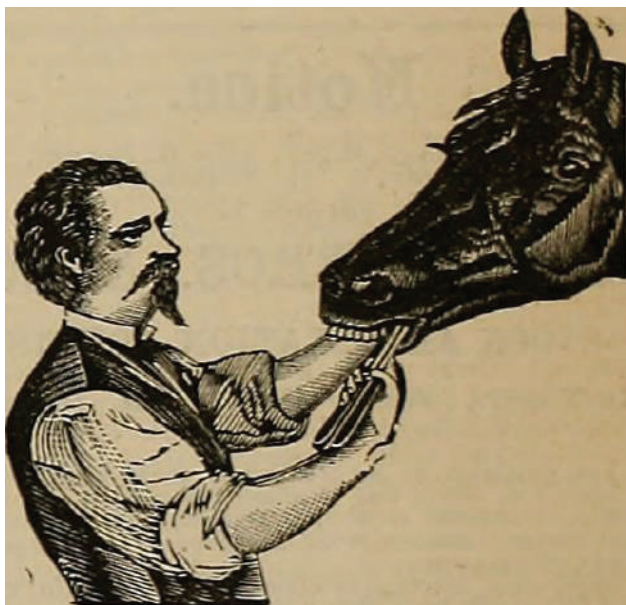
**We're open Monday - Friday 9am - 5pm
Saturday 9am - 12pm**

Heathcote & District
Community Bank® Branch

 **Bendigo Bank**

Bendigo and Adelaide Bank Limited, ABN 11068049178 AFSL/Australian Credit Licence 237879. S48951-10

bendigobank.com.au/heathcote 



HORSE DENTIST Bob Franze (Dip Equine Dentistry)

Prompt reliable service - horses, ponies & donkeys

Based at Elphinstone

No power tools used - reasonable rates

Please call or text me to discuss your requirements

Phone 0418 346 830



**3rd on Property
Ram Sale
Wednesday
10th October 2018**

Supreme
Champion
Merino
Ballarat
2018



Offering - 36 Merino/Poll Merino Rams
& 15 White Suffolk Rams

Inspection 10.30am

Helmsman Sale 12.30pm

Lunch Provided

28 Parfrey Rd Costerfield

Contact - Alan Harris 0417 058 780



www.koolevale.com.au

Heathcote Dental & Kyneton Dental

Dr. Yasser Khan (Principal Dentist)
BDS, ADC, MSC, FICDDE



We Offer:

- Preventative & General Dentistry
- Root Canal Treatment
- Crown & Bridge
- Orthodontics
- Whitening
- Dentures
- Veneers

CDBS Bulk Billed
HICAPS
Veteran Affairs
Denticare
payment plans

174 B High Street, Heathcote, VIC 3523

Ph: 5433 2340

www.heathcotedental.com.au

SHEEP DOG TRIALS



MIA MIA RESERVE
September 14th 15th 16th
from 7 am on 14th Sept
Contact George Lane:
0413 661 649



Editorial

There is so much to say this month that the editors have cancelled the contents section!

First of all, **PLEASE** vote for Mia Mia's initiative through "Pick My Project" to upgrade the very precious Mia Mia hall. Details are on page 11.

Bridge Connection is thrilled that the Heathcote and District Community Bank and Enterprise Foundation have given us a grant to cover the expenses of holding a Bridge Connection Fundraising and Awareness event on October 6th. Have you got your tickets yet? Should be a fun night. Lady Sapphire Bombay will be our MC. I know you are all dying to meet her.

Tim Stobie's "Your Health" article on page 16 is very funny and clever! He has managed to integrate the appalling political fracas we have all endured these past two weeks into an article on headaches. It is a great piece of writing.

In an excellent example of cooperation between committees, the ancient photocopier that Bridge Connection started with several years ago that has been languishing at the school has finally been

dispatched to its final resting place thanks to the Reserve Committee. Thank you to the school for housing it up till now and thanks to the Reserve Committee it has saved Bridge Connection \$400 in removal fees!

While we are on the subject of the reserve, we are so sorry that Les Pocock is resigning as chair. He has been a great leader and manager and has kept everyone in the loop with his regular articles for Bridge Connection. Mike Abramowski has been elected chair and we wish him all the best and look forward to his updates in Bridge Connection.

Tucks Windows, who are regular advertisers, have been very generous in their help with fitting the doors to the pavilion on the reserve (see page 12). Thanks also to the Carmody-Bairds for their generous donation of the windows (see page 17).

Finally, please join the litter clean up on Sunday Sept 23rd (see page 11). There have been a number of complaints about the sad state of our kirbsides and especially the areas around the roundabout. Hope to see you there. This is a district association initiative.

Keep the "Little Treasures" snippets coming. We love to see what you treasure in your lives.

Here comes Spring!

Kathy and Regina



Regina Bennett



Kathy Hall

Co-Editors

Kathy Hall

Regina Bennett

Ph: 0407116 899

e: bridgeconnection.editor@gmail.com

BRIDGE CONNECTION COMMUNITY NEWSPAPER

Advertising Rates/Sizes

Size	Height x Width	Price per issue	10 Editions
Business Card	55mm x 90mm	\$25	\$250
Quarter Page	130mm x 90mm	\$50	\$500
Half Page	130mm x 190mm	\$95	\$950
Full Page	270mm x 190mm	\$175	\$1,750

Colour Advertisements plus 20%.

Please send editorial or advertising copy to:

bridgeconnection.editor@gmail.com

or by post to **866 Coliban Park Road, Redesdale, Vic 3444.**

For other editorial enquiries, please phone **0407 116 899**

Bridge Connection Distribution

800 Copies printed and distributed to Redesdale Mia Mia Region, including Barfold, Baynton, Derrinal, Elphinstone, Glenhope, Kyneton, Langley, Metcalf, Sidonia and Sutton Grange

Disclaimer: The Bridge Connection Inc. Committee wishes to advise that the views or remarks expressed in this publication are not necessarily the views of the volunteer Bridge Connection Inc. editorial or production team and no service or endorsement is implied by the listing of Advertisers, sponsors or contributors. Although every effort is taken in reproducing and printing advertisements correctly, we take no responsibility for errors.

**Please Note:
COPY DEADLINES
20TH OF EACH MONTH**

Management Committee

President :	Jill James	0418 388 919
	jill@colibanestate.com	
Secretary:	Regina Bennett	(03) 5425 5402
	bridgeconnection.secretary@gmail.com	
Treasurer:	Terry Mackenzie	(03) 5425 3262
Magazine:	Kathy Hall & Regina Bennett	(03) 5425 3272



Amenities are available for catering, meetings, weddings and club or family celebrations.

Please phone

Carolyn (03) 5425 3194 for more information.

Redesdale Hall Activities:

- 1st Friday monthly at 9.30am
Bridge Connection Committee meeting
- 2nd Tuesday monthly, 1pm - Hall Comm. Meetings.
- 2nd Tuesday monthly, 7 pm - Rec. Reserve Meetings.

Roaster for Hire

Commercial sized roaster available for hire from the Redesdale and District Association.

\$75 for members and \$100 for non-members.

(Free hire to Hall, Rec. Reserve Committee, and CFA)

Phone **0418 130 206.**



VISIT THE NEW REDESDALE WEBSITE

www.redesdale.net

Postcode 3444 Sustainability House Open Day Specials



As one of Australia's largest open house events the Alternative Technology Association's (ATA) Sustainable Open Day provides the backdrop for two diverse and amazing homes in the region for people to explore and learn from the passionate home owners of these fabulous homes.

'Clearwind' in Glenhope, 20 km NE of Kyneton, and 'Noonameena', 20 minutes further north and only 10 minutes from the iconic Redesdale Hotel will be open for tours on Sunday the 16th of September from 10am-4pm.

Noonameena is the only straw bale home in Australia built to the highly energy efficient Passive House principles with virtually no heating or cooling bills to speak of and enjoys extremely high levels of thermal comfort all year round. Join John and Kym at Noonameena on the shores of Lake Eppalock to experience what a Passive home can feel like.

Check out how to visit these homes at www.sustainablehouseday.com

A gold coin entry fee will be asked with all proceeds to Sanfilippo Children's Foundation and Whitelion.

See the article on page 12 for more details.

Sutton Grange Hall Events

Saturday 22 September Fun night 7 pm start. Games. bring a plate for supper.

Wednesday 21 October 21st Treasure hunt. 10 am start. \$2 per child, \$5 per family. Morning tea provided.

Saturday 10 Nov 10th Bingo. 7 pm start. \$5 per card. Supper provided. Prizes for winners .

Sunday 2 December 2nd Christmas Tea. Satrt 6 pm. bring a main and desert to share. Santa visits at 8 pm.

KYNETON VETERINARY HOSPITAL



Send us a picture of your very special pet and a few words to describe him or her and why you love your pet so much. Send them to bridgeconnection.editor@gmail.com. There is a prize at the end of the year for the best entry.



This is Ginger. She lives in Sutton Grange with Chris and Laura Lavender. She is a Kelpie Cross who is wedded to tennis balls (as you can see). She is the nicest and most patient dog. Everybody loves her. Currently Ginger is babysitting two Jack Russell puppies so she has to be patient.

Kyneton Veterinary Hospital

Where animal lovers heal

Call us today 03 5422 1099

**For TICKETS phone 0407 116 899'
or any Bridge Connection
committee members, contact numbers on
page 3.**

BRIDGE CONNECTION COMMUNITY NEWSPAPER

TICKET \$55pp

FUNDRAISER

Saturday 6 October
from 6.30pm at the Redesdale Hall
MC: Lady Bombay Sapphire

Featuring *Jefferson Smith*
THE VOICE

raffles music silent auction & more...

**HOORAY!
and
THANK YOU!**



Heathcote & District
Community Bank® Branch
and Nagambie branch



**Thanks to the Heathcote & District
Community Bank and
Community Enterprise Foundation™
we have secured a grant to cover the
expenses of the fundraising and
BRIDGE CONNECTION AWARENESS
EVENT to be held on Sat October 6th.
HAVE YOU BOUGHT YOUR TICKET YET?
See page 4**



Redesdale

**REDESDALE AND DISTRICT
ASSOCIATION
AGM
THURSDAY
SEPT 20TH
7 pm
Redesdale Hall
All welcome!**

Elphinstone

Post Office & General Store

*'In the heart of the
Elphinstone community'*



- Newspapers/ Magazines
- Origin Gas Bottles
- Bread • Milk & Groceries
- Postage Services

*'The General Store where
community meets business.'*

**Gill & Dave (03) 5473 3200
9 Bateman Street, Elphinstone**



**General Store
Liquor Store**

**AUSTRALIA
POST**

**Fully Electronic
Postage Service**

**Come in for some
great tasting...**



**Newspapers
& Groceries**

**Banking
Facilities**



**Full alcohol
licence and
bottle shop
with local
wines.**



**Takeaway
Food Service**



**Fuel
& Oil**



Hours:

**Monday to Friday 7am to 8pm
Saturday & Sunday 8am to 8pm**

RJ REDESDALE / Manager: Anurag

**Phone (03) 5425 3154
2609 Main Road, Redesdale**

THE MUNRO LETTERS

Episode 17

We continue the 1842 letter from David Munro to brother Alex in Scotland.

Part 17

The immense advantage to be derived from this export became gradually apparent and we now see an appetite for speculation of the largest amount called into existence by the rapid development of the colony. The first impetus was given to this by the establishment of the Australian Agricultural Coy, but this is described so excellently well by Dr. Lang, that as I have access to his work, I will give it to you in his own words (quotation from Lang). *

This brings us to within the period of the last 10 or 12 years. The country had received a great shock and might have received a lesson, but in its condition legitimately observed, there was no reason for embarrassment: it possessed an export of value, and an immense increasing field of the production of this export; as might have been foretold, it rallied, its export increased in a most rapid ratio, capital from home flowed into it in abundance, its progress was rapid, people again lost their senses and were even completely dazzled by this; speculation commenced more furiously than ever; profits were calculated upon and a future predicted for the country which had no foundation but the diseased brains of speculators; the profits are not realised and crash goes one and crash another; consternation spreads abroad; blank faces are seen on all sides; bankruptcies occur in scores, and then people begin to think there must have been some mistake somewhere, and admit that they were all mad; they don't admit however that they are mad still, but in my humble opinion they have decidedly not yet found their senses. Then is there this analogy between the condition of the country in 1830 and its present condition that at both these periods there was a great degree of embarrassment produced by over speculation and a calculation of profits not realised. But I conceive that there was this most important difference that in the former case the embarrassment was but temporary, whereas in the present I do not see how the colony can rally but consider that in addition to the depression arising from the speculation, the depression that must arise from the country being full is already being felt and soon will be felt to a much greater extent.



Source: Earle, Augustus, 1793-1838 Views in New South Wales and Van Diemens Land : Australian scrap book 1830 - Government jail gang.

The causes then of the very rapid growth of the colony and the consequently exaggerated value at which it has been rated we have seen to be : 1. A great expenditure of government money, abundance of labour for nothing and direct maintenance of the settler by government. 2. The development of a branch if industry of all others requiring the least outlay and the most rapidly extending. 3. A constant large influx of people and capital.

Let us see what are the causes to which the present state of things is to be ascribed. 1. The withdrawal of convict labour. 2. The immense extent of speculation both in land in the colony and in merchandise which has led to a great preponderance of imports over exports and to the draining of the country of a large quantity of money paid for the introduction of emigrants, and which might also fall under the head of excessive imports. 3. To the ruinous system of credits and discounts based upon false calculations of profits, leading to usurious practices encouraging rash speculation and bringing into the field British capital in the shape of Banks and Loan companies the dividends of which are paid at home and consequently carry capital out of the colony. 4. What I regard as the most serious feature of the whole – that is the field of wool production is very nearly full.



Samuel Sweet, Overland telegraph party, J.A.G. Little, Robert Paterson, Charles Todd, Alexander James Mitchell, c.1873, Courtesy the National Library of Australia

I should make one or two remarks on each of these heads, and when I have done that I think I shall have done with Australia. 1. The withdrawal of convict labour: This is a step which colonists now most bitterly regret and yet in their insanity they petitioned for it themselves. The ground upon which the Home Government withdrew the convict system from NSW was in the highest degree laudable and philanthropic. It was conceived that the colony had taken an extension and assumed an importance when it became wrong to pour into it a continual stream of pollution. On the whole it was undoubtedly a wise and proper act, but looked upon as affecting the pecuniary interests of the colonists, decidedly injurious. If this had been seen more distinctly at the time, and if there had not been so much humbug and overestimating of their strength, there would have been few voices raised against it in Australia. A great deal was heard at the time of the inconvenience of the convict system and it was even pretended by some ridiculous people that free labour was cheaper than convict: they have now however changed their opinions, and I have met with many who are very anxious to resume the system of sending convicts to NSW. On the score of morality there is no doubt that in the increase of the country by the continental accession of non-convict settlers, the original vicious taint may at length be washed away, but this I fear will be a much sower process than is anticipated.

There is already a tone in the colony, which I am sorry to say infects even many who come out from home with feelings of the strictest delicacy and honour: this tone it will be most difficult to supersede. Once established as it is, it rather makes proselytes, then suffers a loss of members, and unfortunately the persons best calculated to give a healthy tone to society among whom the great majority emigrated within the last 6 years, generally disappear into the bush, where their influence is lost, while those who appear most prominently and are the oracles of the colony and many of them men of the most questionable character and conduct.

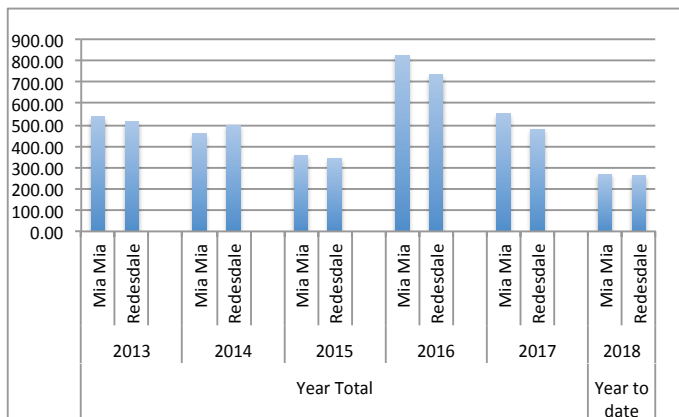
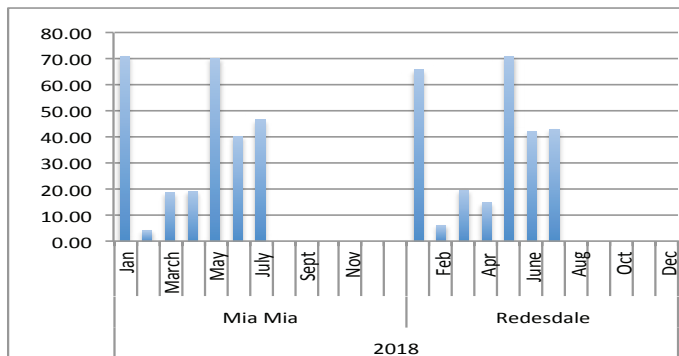
Next month:

The people in the Port Phillip district are in the habit of congratulating themselves on there not being a convict settlement...



The average yearly rainfall for Redesdale is about 601mms.

Thank you to Mary Bennett for the Mia Mia readings.



Make your special celebration a PARTY TO REMEMBER!

Party Hire Equipment For Hire

Tables - 183cms rectangle

Plastic Tables - \$5 each

Chairs - White plastic - \$1 per day

Umbrellas - Charcoal \$5 per day

Table Cloths - White - \$2 each

Many more
party items
for hire to
have your
occasion
organised
& stress free.

For more information please call 0418 130 206

CHURCH SERVICES

UNITING CHURCH

Barfold: 1st Sunday of each month
Metcalf: 2nd Sunday of each month
Mia Mia: 3rd Sunday of each month
Sutton Grange: 4th Sunday of each month

Morning tea is served at each of these Uniting Churches at 9.45 am and services start at 10 am. If there is a 5th Sunday in the month, services may be found at Kyneton.

CATHOLIC CHURCH

Redesdale: 2nd Sunday of each month 11 am



creative designs for your business

logos menus flyers posters
invitations brochures magazines
business cards advertisements
letterheads with compliment slips
full business imaging

lyn ingsles | graphic designer
blupen@ncable.net.au
0429 911 980

Sponsoring the 'Bridge Connection'



Quote of the month:

"I disapprove of what you say, but I will defend to the death your right to say it."

Voltaire



DEFIBRILLATOR

The Community owned defibrillator
is now accessible to all
community members.

It is situated on the outside wall of the CFA
building (next to the Rural Café).



QUALITY FARM SHEDS

Machinery
Hay Sheds
Stock Shelters
Shearing Sheds

Barns
Horse Arenas
Workshops
Garages

Building Quality Farm Sheds since 1975

CENTRAL
steelbuild

T/A Central Vic Sheds

1300 955 608

8 Hoyle Court, Kyneton



All proceeds from the tea dance will go to drought relief for farmers.

Community Walks to Remember

The Macedon Ranges Suicide Prevention Action Group (MRSPAG) is inviting our community to its fifth annual Suicide Prevention Walk. This event will be held at the Woodend Children's Park, 13 Nicholson Street, Woodend on Sunday the 9th of September at 9.30am.

You can register on the day of the event or via the MRSPAG website if you wish to have the name read out of a loved one or friend that you have lost to suicide.

The walk is an opportunity to come together in remembering those lost to suicide, those bereaved by suicide and those amongst us who are struggling. The walk aims to bring our community together because suicide is everyone's business and we need to be talking about it in order to prevent it.

Highlighting the importance of raising awareness for suicide prevention the walk takes place every year as it coincides with World Suicide Prevention Day in September.

Entertainment, food and information bags will be handed out after the walk takes place

For further information please contact suicidepreventionwalk@mrspag.com.au or to register online please go to mrspag.com.au



MIA MIA HALL NEEDS YOUR VOTE

see page 11 for details



Please help Mia Mia succeed in obtaining funding to renovate the hall. All your votes count. Please visit pickmyproject.vic.gov.

Again the music comes to Mia Mia!



I enjoyed a wonderful musical evening at the Mia Mia hall on Saturday August 11th. An appreciative audience enjoyed an evening of wonderful music, a highlight being an abridged version on Puccini's Tosca! The Mia Mia hall proved to be a very suitable venue for such an evening with its timber walls and ceiling "helping" the acoustics. The audience also enjoyed the interaction with the musicians both from the stage and during the supper afterwards. A great night.

Deidre Hankinson

RECIPE OF THE MONTH

35 Eton Mess Serves 6



Meringue

3 egg whites
150 g castor sugar
1 pinch salt
5 tsp lemon juice

Rhubarb Cream

300 mls whipping cream
8 tbs rhubarb mix

Rhubarb Mix

300g rhubarb, peeled washed and chopped into 1 cm pieces
8 tbs castor sugar
150g Granny Smith's apples peeled washed and chopped into 1 cm cubes.
4 tbs water
2 tbs lemon juice
2 star anise

To serve

12 strawberries - quartered
6 scoops of good quality vanilla ice-cream

Meringue

Pre-heat oven to 140 deg. Line a 40 cm oven tray with greaseproof paper. Whisk egg-white till soft peaks form. Gradually add sugar one third at a time until meringue is stiff and shiny. Spread meringue on tray and bake for approx one hour until crisp. Allow to cool.

Rhubarb mix

Place all ingredients except lemon juice in a saucepan and cook on low heat until rhubarb and apple are soft. Remove from heat and add lemon juice and remove star anise.

Rhubarb cream

Whisk cream until firm peaks form. Fold through 4 tablespoons of rhubarb mix.

To serve

Break meringue into small uneven pieces. Layer in six glasses or bowls with remaining apple and rhubarb mix, fresh strawberries and rhubarb cream. Place a scoop of vanilla ice-cream on top,

FARMERS' MARKETS



Woodend Community Farmers' Market

Sat 1st Sept
Cnr High & Forest Streets, Woodend
0487 444 090 Sharon Kittson

Daylesford Farmer's Market

Sat 1st Sept
Daylesford Primary School
03 5664 0096 Peter Arnold

Kyneton Farmers' Market

Sat 8th Sept
St Pauls Park, Piper Street, Kyneton
54 221 025 Veronica Maniford

Riddells Creek Farmers' Market

Sat 15th Sept
Riddells Creek Primary School, Riddells Creek
0408 254 626 Ali Bant

Lancefield & District Farmers' Market

Sat 22nd Sept
Centre Plantation, High Street, Lancefield
0407 860 320 Meggs Hannes

Maldon Market

Sunday 9th Sept

www.vicfarmersmarkets.org.au

It is recommended that you check these dates with the market website if possible.

Proudly printed in Kyneton

Castlemaine, Kyneton & Gisborne
CopyCentre
Printing together for our community

Design & Pre-press
Plan Scanning, Finishing Services.

*Not just a Copy Centre...
we are so much more.*



www.windarring.org.au

58 Mollison Street
Kyneton
03 5422 2400

Steph Ryan MP

Member for Euroa

WWWstephryan.com.au

Funded through Parliament's Electorate Office and Communications budget



September puts spotlight on women's health

Women of all ages are invited to participate in the sixth annual Jean Hailes' Women's Health Week which commences this Monday, September 3. Member for Euroa and Deputy Leader of The Nationals Steph Ryan has encouraged women across the electorate to get involved with the health promotion campaign which is dedicated to improving women's health knowledge and behaviours. This year the campaign will run from 3 – 7 September.

"Women lead such busy lives that we often put our personal health on the back burner," Ms Ryan said.

"This week is a timely reminder to put ourselves first.

"Jean Hailes is Australia's leading and most trusted health organisation dedicated to improving women's health.

"Their annual online survey, which runs in conjunction with Women's Health Week, further provides Australian women with revealing insights into their health concerns, behaviours and needs.

"Last year, 10,377 women were surveyed about their health needs. Three quarters of those women described their overall health as 'good' or 'very good'.

"The survey further found that approximately 60 per cent of women are not taking part in at least 2.5 hours of moderate physical activity per week."

Each day of the week will focus on a specific health concern for women and provide them with valuable information and statistics on that particular issue.

Women are further encouraged to complete this year's Women's Health Survey.

The survey is anonymous and contributes to understanding the health and wellbeing of women today.

"I encourage all women to get behind this year's survey that assists in improving women's health knowledge and behaviour," Ms Ryan said.

For more information on Women's Health Week: <https://www.women-shealthweek.com.au>

Liberal Nationals to break down barriers for rural students

A young person's future shouldn't be determined by where they live.

For many young regional Victorians the daunting challenge of moving away from family and friends for tertiary education is a reality they have to face alone.

An elected Liberal Nationals Government will invest in a brighter future for young Victorians with a new program to help students who have to relocate settle into tertiary study.

In discussions with the Rural Youth Ambassadors, we'll provide \$600,000 over four years to create the Rural Tertiary Network, a program to link students who have moved to one of Victoria's regional cities or Melbourne for study with other students who have faced the challenge of settling into university or TAFE away from home.

We'll also establish a pop-up hub as a base for rural students and their families as they start their tertiary education.

A lack of transitional support for regional students who relocate for study was one of the key challenges identified in a 2013 report from the Regional Policy Advisory Committee.

Other challenges included isolation from friends and family, experiencing independent living for the first time, culture shock and adjusting to an environment where they are one of many high-achieving students.

Only a Liberal Nationals Government will invest in a brighter future for Victoria's next generation of leaders.

Comment attributable to Shadow Minister for Skills, Training and Apprenticeships Steph Ryan

Young people from country Victoria deserve the same opportunities as city kids.

The Liberal Nationals will help more students from rural and regional Victoria overcome the obstacles barring them from tertiary education, be it university or vocational education and training.

Our Rural Tertiary Network will give them the support they need to tackle a tertiary education.

CONNOLLY GLASS

- Broken Window Repairs • Mirrors
- Balustrades • Splashbacks
- Shower Screens: Framed
- Semi Frameless & Frameless
- Retro Fitted

Double Glazing & Commercial Window Frames & Glazing

0428 535 101

177 Lyell Road, Redesdale. Vic. 3444

Email: chrisjen@bigpond.net.au

PICK MY PROJECT MIA MIA HALL VOTING CLOSES 17TH SEPT

www.pickmyproject.vic.gov.au



PLEASE HELP

Mia Mia Hall has been the centre of social activity in the district since 1907. It now needs a major makeover. The inside will stay exactly as it is but everything from the stumps up needs repair or replacement. The "Pick My Project" initiative is one of the few avenues for funding community-owned infrastructure. Help keep Mia Mia Hall open for business by going to;

www.pickmyproject.vic.gov.au

enter either Mia Mia Vic or Redesdale Vic as your area.

The Mia Mia Hall project will be the first one listed. Select it and two other projects (they all must be in the same area) and follow the voting instructions.



Federal Member for Bendigo

LISA CHESTERS MP

PO Box 338 Bendigo 3552
Cnr Williamson & Myers Sts, Bendigo 3550

T: 034 5443 9055 • F 03 5443 9736
E: Lisa.Chesters.MP@aph.gov.au

Twitter: @LMChesters • Facebook: /LisaChestersBendigo

REDESDALE CFA NEWS

After a long cold winter it is that time of year when we turn our attention to the big Spring clean up. As an extra incentive the Redesdale Fire Brigade is once again holding the "Best prepared property" competition.

Members of the brigade will be keeping an eye out for what catches their attention as a well prepared property. Judging criteria includes fuel reduction, water availability and Fire Truck access. Using this time of the year to do your spraying, whipper snipping and mowing can not only make you feel safer over the summer period but could also win you a \$100 Bunnings voucher and title of "Best prepared property" for 2018.

Anyone interested in finding out more information about preparing for Summer is welcome to drop in to the Fire Station on Sunday mornings from 9am to 10.30am and speak to your local CFA members. We can hopefully help out with some useful advice and we often finish up with a coffee at the neighbouring Rural Cafe, so feel free to join us.

Happy mowing.

Andrew Campbell

COMMUNITY CLEAN UP!

Has everybody noticed how much rubbish is lying around our lovely town?
Join us for the first of our Community Clean ups!
On this occasion we will be focussing on the Roundabout and approximately 200 metres down each road. Sutton Grange Road, Lyell Road, C327 and Racecourse Road.

Sunday Sept 23rd • 10.30am-12noon

Morning tea provided for Volunteers

Meet on: Racecourse Road (north end)

Sustainable House Open Day

Sunday 16th September

The Alternative Technology Association's Sustainable House Open Day is on Sunday September 16th, from 10.00am until 4.00pm. There are approximately 250 homes participating nationally with two very interesting and handy homes for readers of the Bridge Connection to visit.

Both homes are within 20 minutes of each other with Clearwind in Glenhope and Noonameena on the shores of Lake Eppalock near Redesdale. Both homes are very different and offer visitors an insight into the breadth of what "sustainability" encompasses.

Noonameena is a straw bale prefab SITUP panel home resting on 20 acres of prime 'Rocky Redesdale' land. John and Kym had a vision for a warm cozy and healthy home and discovered through the planning process all about the German building standard known as Passive House.

John and Kym learned that with clever and targeted use of insulation, great windows and doors, complete airtightness and mechanical heat recovery ventilation they would virtually not need any additional heating or cooling during the year, 'it was a no brainer for Noons' John says. Well this prospect was enticing and the reality is even better. 'With clean fresh filtered air and 18-25 degrees 24 hours 7 days a week, the house is performing fantastically well,' John adds. Kym says that 'when the wind is blowing its whisper quiet and we need a proper doorbell as we cannot hear cars arriving it's that quiet!'

John loves how the Passive House principles work, so much so he has now qualified as a Passive House Consultant and can help folks on their own passive home journey. Tours of Noon's on the open day will be on an hourly cycle (on the hour) and should take about 30-40 minutes leaving plenty of time for questions etc.



Noonameena

If you cannot make it and or wish to experience the wonderful living space that a Passive Home can deliver, Noonameena is available on AirBnB for weekend or week day stays.

By contrast with Noonameena, "Clearwind", home of Win Westerhoff and Clare Claydon, started life as an ultra draught and leaky house. Win spent many hours applying door sealers and used many tubes of No More Gaps, making sure no draughts can get into their wood-warmed home. "Fixing draughts pays dividends." Said Win. "Not only is it more comfortable be in a draught-free house, but we use far less wood in the stove."

Turn your house
into a home
with Tucks
locally made products



Quality



& Style

- Aluminium and Timber Windows
- Window Replacements • Security Doors
- Shower Screens • Wardrobe Doors

We are in your area regularly and offer a **FREE** measure and quote service.

We can offer supply and install prices.



**Tucks
Windows
BENDIGO**

Celebrating 43 Years
providing top quality
products and
professional
friendly service.

P: 03 5446 8855 E: tuckswindows@impulse.net.au

www.tuckswindows.com.au

**METCALFE VINTAGE
TRACTOR PULL
& WOODCHOP**



SUNDAY SEPT. 16TH

METCALFE RESERVE

\$7-50 (KIDS FREE)

INFO: 0438 510 051



However, they feel their greatest “win” in the “keep warm air in in winter and out in summer” was when secondary glazing was installed in the living area. “For us, the secondary glazing was a significant investment, but it means that we can now get through summer in reasonable comfort with just fans to cool us.” Said Win.

Clare and Win share with Sustainable House visitors information about their solar electricity, hot water systems and their composting toilet which uses no water at all and returns valuable nutrients to the orchard.

Outside, Clare takes visitors around their year round veggie garden, 80 tree organic orchard and the supporting worm farm and compost heap. Their worm farm is very simple and produces over 5 tonnes of castings a year. Clare commented, “We try to keep the nutrients up to our veggie garden and orchard with lashings of compost and worm castings. As a result, we very seldom have disease problems in the garden; and our produce tastes great!”

Guided tours of the house and food production areas will take place every half hour. Visitors are also invited to browse the displays on various aspects of sustainability or participate in pop up workshops on topics including:

- o indigenous bees
- o building in rammed earth
- o using indigenous vegetation in the garden and collecting seed
- o making biochar - a valuable soil additive
- o preserving fruit

Homemade refreshments are available to purchase as Clare and Win are happy for people to spend a bit of time at “Clearwind” and have a good look, have a think and lots of discussions about things sustainable.

Further information about both Noonameena and Clearwind is available at <https://sustainablehouseday.com/?postcode=3444&state=&years=2018&s=&geo-radius=150&dir-search=yes> . Exact addresses will be available on the ATA website a fortnight before the event.



Clearwind



Alternative Technology Association's

Sustainable House Day

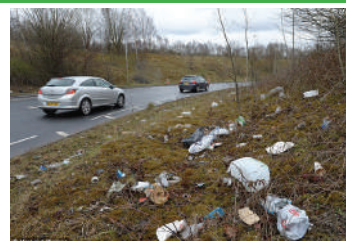
10.00 am - 4.00 pm, Sunday, September 16th, 2018



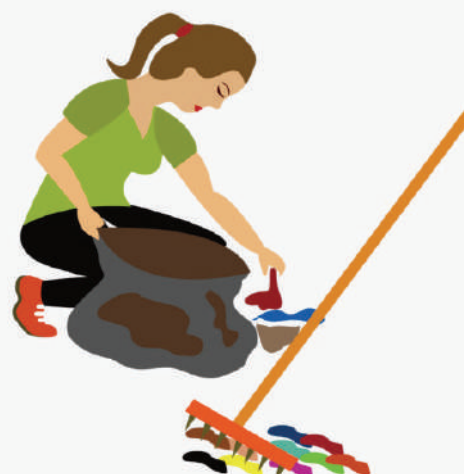
Clare and Win at Clearwind

For ideas and inspiration, come and visit “Clearwind”, Glenhope. 20 km NE of Kyneton.

More information: https://sustainablehouseday.com/house-profile-view/?house_id=26418 or call 03 96315421



Let's do it!
See community clean-up poster on page 11



Redesdale Ramblings: Some More South American Bulbs

After looking at South America a couple of months ago I thought I'd mention a few more of their plants.

Conanthera is a very interesting genus of plants related to the Chilean Blue Crocus, Tecophilea cyanocrocus, so as you might expect the flowers are mostly in blue shades (but not that true blue of the tecophilea). The first time I saw Conanthera bifolia I mistook it for one of "our" Dianellas in flower with its reflexed petals and prominent yellow anthers. I've yet to flower it myself and I wonder if it needs protection from frosts. Conanthera campanulata has a branching stem from which hang several bell-shaped purple flowers and can still be in flower into summer so may need a drink then. It sets small capsules with a few round, black seeds which is an effective way of getting increase. Conanthera trimaculata has more open, wider petals and a large black spot patterning the three outer petals. This one was harder for us to obtain as it crosses easily in cultivation so the seeds we got from the UK turned out to be a hybrid of it and C. campanulata which were attractive but not as much as the true thing. Eventually we found a friend in Melbourne who had the correct plant and have had it flower for us in a pot. If we can isolate it from the other types we might have a chance of setting some "pure" seed to get a few more plants.



Conanthera trimaculata

Leucocoryne gets called "Glory of the Sun" and in the bright spring sunshine they certainly can be glorious. The starry flowers are various colours, mostly white, blue or purple and are produced in small umbels on top of graceful stems that can sway in the breeze. They are sometimes available from specialist growers but we've grown ours from seed which takes a few years but is relatively easy to do in our climate. The bulbs come into growth in winter producing grassy, nondescript foliage but when the weather is warmer up comes the flower stems and the effect can be stunning, especially if get one of the purple types or the very distinctive Leucocoryne vittata with stripey flowers. For us the best conditions seem to be a well-drained soil in a raised bed. They are very tempting to slugs and snails so keep a watch out for them. After flowering the leaves quickly wisp away and no trace is visible above ground – so be careful when digging around them!

Most people know Nasturtiums as those annuals with colourful, edible flowers and leaves like little umbrellas which hold drops of water like quicksilver beads. But it is just one species in a large genus

called Tropaeolum which includes some very beautiful species that grow from tubers. The most commonly seen is Tropaeolum tricolor with emerges in the autumn as thin thread-like shoots which twine around any upright obstacle to get up into the sunlight. As they grow they thicken up and in spring produce an abundance of small orange-red, yellow and black flowers.



Tropaeolum tricolor

Tropaeolum speciosum is known as the "Flame Creeper" a name it fully deserves when you see the bright swathes of scarlet flowers high up in whatever tree it has grown through. It is so vigorous in parts of Scotland that it has become a weed! We have no risk of that happening here as it needs a very cool root run and then sufficient light to get it to flower. However I've seen it in Dunedin, New Zealand, taking over a tall rhododendron, so perhaps in the hills it could be a pest. Tropaeolum brachyceras and T. ciliatum are also available sometimes – try Dicksonia Rare Plants or The Garden Tap Nursery. Tropaeolum azureum is one that most people want once they see it. As the name implies the colour of the flowers is a bluish-mauve and it one of the prettiest of the genus with wide open "faces". Overseas some breeders have crossed a few of these species and the hybrids are very interesting but I'm not sure if we could ever get them introduced – unless someone here is able to re-create the crosses.

Cheers

Fermi de Sousa The Redesdale Rock Gardener





Hello Dear Readers,

Lady Bombay here with more reminiscences of times gone by. Such positive feedback from my last article on La Mortella, I have another travel garden adventure prompted by Peter Howler of Mia Mia. Thank you my dear. As the Turner clouds of winter keep hovering above us at Mia Mia Manor, I digress to another garden that Lord B and I were enchanted by. I want to take you to the Palace of Versailles but not how one generally sees it. Built out of nobility, we

thought it only fitting that Lady and Lord B should pay a visit to such a venue without being recognised, of course.

As we have not been dictated to by the latest or acceptable fashion of garden design, we did not visit Versailles for its formality and grandeur of the palace and gardens as most tourists do, but for the delightful composition of the Petite Trianon and Marie Antionette's Hamlet where the harsh lines of aristocratic, bourgeois and materialistic ideals are thrown out of the window.

King Louis certainly knew how to make an impression of the palace and surrounding gardens; vast comes to mind and slightly overwhelming for those having to walk. I found myself thinking, how does one interpret such a grand plan into one's garden? A Rockefeller we are not. Having researched the visit in advance I discovered the Petite Trianon, a much more manageable scale and so pretty. It is known mainly as the smaller house of Marie Antoinette, her private residence and means of escape from the main palace and court life. After a rather lengthy walk from the palace, we found it and to our absolute delight, the Hamlet. A perfect, rustic little village set around a lake with many informal garden beds, vegetable gardens and follies. One could imagine the King and Queen frolicking in their casual attire in this marvellous setting. Informal plantings of roses in a pallet of colours to catch the eye. With the contrast of the strict structure of the palace, these were not. Unfortunately, it was all a bit dilapidated on our first visit

some forty odd years ago. Most of the buildings and fences were in dire need of restoration and repair. Memories fall back to the half standing oak staircase on the hunting lodge. Mind you the fact that it was built in 1750, little wonder.

A small historical note reader:

Versailles gardens are constantly being replanted to the original design. Most trees live for an average of one hundred years and the gardens are now two hundred and sixty-eight years old.

On a happier note, Lord B and I returned to the Hamlet a few years ago. Crowds of people at the palace, however not at the Hamlet where we were amongst six other visitors which I am please to report has been completely restored including the oak staircase. Many of the first visit garden inspirations have transpired in Mia Mia Manor today. Like Marie Antoinette's "Hamlet" if you build in wood, it won't last forever. Which reminds me where is Thorn, the gardener? I have a list of repairs for him to carry out on our outbuildings.

Next time you are in Paris, take the train to Versailles, go past all the large crowds at the palace and head straight down to the Petite Trianon and Hamlet and last but not least, wear sensible walking shoes.

Time for mother's ruin.

Lady Bombay



Bombay and a Bex

*Send in your questions for Lady Saphire Bombay to
bridgeconnection.editor@gmail.com*

Dear lady B,

I have been inspired by your past articles and particularly on your garden follies. I want to build little structure in my garden, but afraid how much it will cost. How can I build a follie on a budget?

Dee Construction

Dear D,

Firstly, start with a nip of Mothers ruin to get the creative juices flowing. Keep it simple by setting your moderate sized boundary. I find a two-person size adequate. Think of a child cubby house in a grown-up fashion. Set four posts in the ground: cypress is my choice, add a pitched roof to make it a) all weather protecting and b) to protect the structure from rot. A tin roof is relatively straight forward or cheat and use Perspex which will give you light. Wooden trellis always looks effective and a nice climbing rose to add colour and finish it off. If find that going to scrap yards can save you quite considerably on materials and you can add to it should you desire. My first structure at Mia Mia Manor was the summer house which was made from old veranda posts and trellis with a two-seater bench and a clock in the pitch of the roof which is telling me five o'clock. Time for Mothers ruin.

Happy erecting dear, Lady B

TITBITS

Did you know...?

The size of a raindrop is around 0.5mm - 2.5mm, and they fall from the sky on average 21 feet per second.

Sound carries so well in the Arctic that on a calm day, a conversation can be heard from 1.8 miles away.

A small child could crawl through a blue whale's major arteries.

There are more stars than all the grains of sand on earth.

Electricity doesn't move through a wire but through a field around the wire.

The gnomon is the thing that casts the shadow on a sundial.

When you look at a full moon, what you see is only one fifth the size of the continent of Africa.

Migraine - it's not just a dagger-attack to the head...



Your Health! with Dr Tim

After the utterly monstrous week we have just had in federal politics - what better subject to write about than headaches. And before I go any further, I wish to assure you that what is written herein is without character assassination, name-calling, self-aggrandisement, hyperbole or fake news. No politicians were harmed in the writing of this article...

There are predominantly three types of headache, their names are Peter, Scott and Julie. Oh goodness - what am I doing - sorry. Their names are Migraine Tension and Sinus.

Now Sinus headache is up-front, and that's a good thing when you're trying to - uhhh - clear the air. A remedy may take a good dose of weed killer but you will always win out with this in the end.

Tension headache is the stayer. Always there in the background, ready to flare when things get tough. This one is simple enough to manage too - just massage the numbers, sorry - muscles, and common household pain relief will usually do the rest.

Migraine headache however is another kettle of slippery eels.

I jest not now!

There have been no major studies of migraine headache in Australia, but relevant overseas data based on very old figures suggests up to three million sufferers here. The direct and indirect costs based on these old figures would be at least 1 billion dollars. Try and swallow that ScoMo. Strangely it is predominantly females affected by migraine headache. The incidence starts to climb at the age of voting, and reaches a peak around age 40, diminishing thereafter. It is estimated 23% of households have at least one migraine-sufferer and nearly all migraine sufferers experience reductions in social activity and work capacity. Severe cases are found amongst the under-employed.

So migraine is a huge problem, but what causes it? Well migraine susceptibility seems to be inherited - surprise, surprise - it's in the genes. Different parts of the brain can respond to either external or internal stimuli causing an imbalance in neurotransmitters. "If the brainstem systems controlling the cerebral cortex become active, the brain starts to shut down" - affecting commonly the back of the brain first which explains the common symptom of migraine onset which is visual disturbance or sometimes very disturbingly a complete lack of vision. There are also cerebral blood circulation changes which contribute to the migraine attack. I think there would be many polities this week that would identify with what's going on in a migraine attack.

The list of possible triggers for migraine is pretty much endless - hormones, alcohol, lack of sleep, too much sleep, lack of exercise, too much exercise, heat, cold, noise, salt, water, stress, colleagues, Parties, One Nation, United Nations - the list goes on.

Much as it is important to recognise possible triggers and avoid them as much as possible, sometimes the only way to manage migraine is to treat, to treat early and to banish it to - wherever you want to banish nasty headaches to.

Common barriers to effective treatment are a lack of awareness of migraine as the cause of headache, and a lack of understanding regarding the many options for treatment. These options include non-medication therapies, acupuncture, massage, dietary modification, yoga and meditation, as well as a range of both preventative medications and pain-relieving medications for a sudden attack - there is no need just to "put up". I have known from professional experience migraine cases which are particularly difficult to manage, but in all cases there is at least some way to significantly reduce the burden of migraine.

So speak up to your doctor, don't put up with the monster that migraine can be - it can be tamed!

With apologies to headacheaustralia.org.au

Dr Tim Stobie 5422 1397

Kyneton  **Medical Centre**
Knowledgeable. Modern. Caring.



in the Heathcote Region

Sunday 2 September 2018 - Mimosa Glen Homestead presents Spring Wellness Days - Time: 9am to 2:30pm. The day includes 2 hours of yoga and 1 hour of meditation as well as a delicious, healthy lunch. Onsite accommodation is available by prior arrangement. Cost \$115. For enquires or bookings, phone Sue on 0438 568 570 or website www.mimosaglen.com.au, Venue: Mimosa Glen Homestead, Lancefield/Tooborac Rd, Tooborac.

Sunday 2 September 2018 - Father's Day Lunch at Heathcote Harvest - Time: 12:30pm. Cost \$60 per person. Spoil dad with our very popular Ribs, Roast, and Racks, a sumptuous four course meal. Local wines, beers and cider available for purchase. Be quick, limited numbers. Email: steve@heathcoteharvest.com.au Venue: Heathcote Harvest, 32 Tuscan Court, Heathcote.

Sunday 2 September 2018 - Father's Day Lunch at the Heathcote Inn - Spit Roast with vegetables and house made damper, \$25 per person. Live Music in the afternoon; further information to be provided. Bookings preferred on Ph: 54332409 or via bookings@heathcoteinn.com.au. Venue: Heathcote Inn, 9 Hunter Place,

Thursday 6 September 2018 - Poetry Open Mic - Venue: Palling Bros Brewery, 168 High Street. 0427848073. Free Event. Start Time: 6pm. Any poets email brewery@pallingbros.beer. We encourage original writing. Additional event dates will be the 1st Thursday of every month.

Sunday 23 September 2018 - Mimosa Glen Homestead presents Spring Wellness Days - Bud Swell - Nourishing Energy. For enquires or bookings, phone Sue on 0438 568 570 or website www.mimosaglen.com.au

, Venue: Mimosa Glen Homestead, Lancefield/Tooborac Rd, Tooborac.

Saturday 29 September 2018 - AFL Grand Final - Big TV playing the AFL Grand Final, house made pies and pizza, gourmet sausages in rolls with all the trimmings, draught beer on tap. Time: 12pm - 6.30pm. Venue: Heathcote Inn, 9 Hunter Place, Heathcote. Bookings essential on Ph: 54332409 or via bookings@heathcoteinn.com.au.

Tuesday 2 to Thursday 4 October 2018 - Elmore Field Days - Machinery and Agricultural show with over 700 exhibitors there is plenty for everyone to see. Cost: \$20 Adults \$10 secondary students Children under 12 free. Venue: Elmore Events Centre, 48 Rosaia Road, Elmore. Time 8.30am - 5.00pm. Contact details: 0354326176, website: www.emorefielddays.com.au or via email at: info@elmorefielddays.com.au.

Thursday 4 October 2018 - Poetry Open Mic - Venue: Palling Bros Brewery, 168 High Street, Heathcote. Free Event. Start Time: 6pm. Any poets interesting in performing please email brewery@pallingbros.beer. We encourage original writing.

Saturday 6 October 2018 - Lions Bush Market - Bookings for a stall can be made by calling Jean on 0400 675 995 Barrack Reserve,

Saturday 6 Sunday 7 October 2018 - Heathcote Wine and Food Festival - Tickets are on sale now. Visit: www.heathcotewinegrowers.com.au/festival.

Saturday 6 October 2018 - Heathcote Beer Festival - 11am - 9pm, Palling Bros Brewery, 168 High Street, Heathcote - Rood Henry's Temple of Frothing Ambers is hosting the ultimate ode to the might Brew. Our brewery is just a 6 minute walk from the Famous Heathcote Food and Wine Festival.

Redesdale Recreational Reserve Committee Inc. Chairman's Monthly Report September 2018

Hi Redesdalians,

Progress at the pavilion with the installation of the windows is well under-way and by the end of the month we should be at lock-up stage thanks to the tireless work of our members.



I have included a couple of photographs of the pavilion windows installed, and with spring around the corner the reserve will look a picture (see below).

Two large trees have been removed, one dead gum on reserve lane and an ash on the western corner of the pavilion.

Due to unforeseen circumstances the reserve committee have had to cancel the festival for this year, all going well it will be on again in 2019.

This will be my last report as I have stepped down as chairman, I said when I took on the roll just on 4.5 years ago, 3 years would see me out. I have enjoyed these years and I believe it is time for someone younger to step up. The working relationship with the other members has been exciting and to see what has been achieved is just a great feeling of accomplishment. The relationship that the committee has developed with the CoGB and DELWP can only grow stronger as the reserve progresses with the precinct hub. These will be exciting times for the committee and the community as a whole.

Finally thanks to the community members who have supported what has been achieved on my watch, and I look forward to watching the progress of the precinct hub from the sidelines.

Keep smiling until next time.

Les. Pocock

Chair. Redesdale Recreational Reserve Committee Inc



stone axe estate redesdale | heathcote



- fine red wines, top quality olive oil, chutneys and jams
- all the fruit in the products is grown organically on the property

Contact **Heather Carmody** for purchase, order form or tasting on **0402 818 125** or at **heathercarmody1@gmail.com**

stoneaxe.com.au

Little Treasures

We are continuing to invite stories about objects that are dear to our readers. We would love to hear from any of our readers about any inanimate object in your life that means a lot to you and that you really treasure. And send us a picture too.

Please send your contributions (about 500 words) to bridgeconnection.editor@gmail.com. We look forward to hearing from you.

Here is a delightful contribution from local resident H Snoad from Heathcote.

Dear Editors.

I thought you might like this. It was at my Grannies and always greeted us when we arrived at her place. It sat on the hall table. As children, we always referred to it as her stork. Actually, I think it might be an Ibis? It was very precious in our family because Grandpa bought it for Granny in Japan prior to World War 2.

It is made of copper and brass with an enamel finish. Its probably older than the forties but I don't really know. All I know is that it brings back wonderful memories every time I look at it. I treasure it.



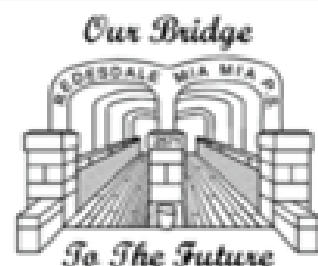
Acting Principal: Trish Johnstone

Phone: 5425 3155

Email:

redesdale.mia.mia.ps.ps@edumail.vic.gov.au

Redesdale Mia Mia PS



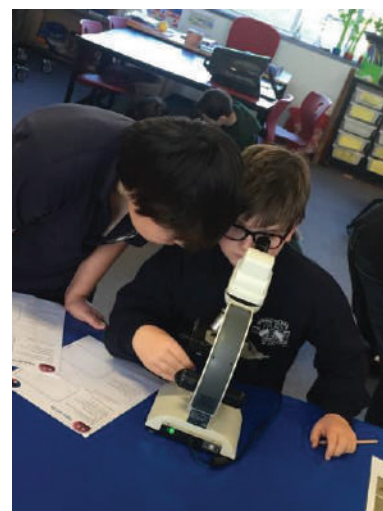
School news



Another busy term with some very cold, wet, frosty and windy weather! Children have been involved in a number learning experiences including a cluster school Science day for Grade 5/6 students, Coliban Water incursion session, Book Week activities, Hook into Hockey sessions and Breakfast Club.

100 days of school!

Students enjoyed a variety of activities to celebrate 100 days at school. They made a 100 cake, counted 100 objects, made a necklace with 100 things on it and made a list of 100 things they would wish for and not want. I'm hoping my wish for 100 weekends might come true one day! A fun day for all the students - thanks to Ms Groves for her planning and organisation for the celebration day.



Bucket Fillers

As part of the Respectful Relationships program, children have been talking about emotions and how little actions can make a big difference to how we feel every day. We can be bucket fillers or bucket dippers - how full is your bucket today?

My favourite school 'spot'

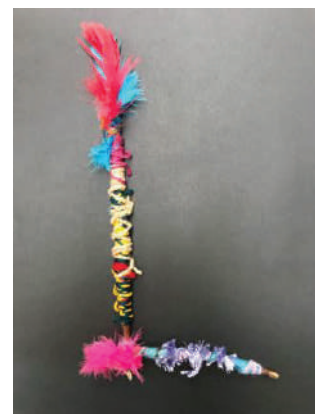
Each week one of the students showcases three areas of the school that they love! Areas nominated have included the Art room, school library and classroom maths games area.



MS Readathon

Thanks to the school and local community for supporting students with the MS Readathon and Ms Groves for managing the online portal. Keep reading everyone!

The **Jump Rope for Heart** activities will continue as students develop their skipping skills. Students have taken a skipping rope home to ensure they keep up the practise at home.



HALL HAPPENINGS

With Norma Barker



Another quiet month for the Hall Committee.

Some of our members have escaped to warmer climes, and those of us left here are very envious of them.

Our cookery class for Lemon Meringue Pie was most enjoyable for those who came, unfortunately we forgot to take photos but I believe the cooks and their families enjoyed eating the results.

Our Afternoon Tea Dance is on again, so all who enjoy the old-time dancing are invited to come along to the Redesdale Hall on 23rd September from 1pm to 5pm for a lovely afternoon. Contact Dorothea on 54253118 or Sue on 0488253222 for details.



Kyneton ADFAS

The World's Most Expensive Art: Where Leonardo Meets Picasso

Please join guest lecturer, Ian Swankie at the Kyneton Town Hall on Thursday 13th September when his lecture will focus on the top end of the art market where such paintings including those by Picasso and Pollock are all held together by the common thread of their extraordinary commercial value.

Entry is \$30 cash or cheque payable on the evening and this includes refreshments (served from 6.45-7.30pm), in addition to the lecture (7.30-8.30pm). For more information and registration of interest, please call Nicky on 0400 958 449.



Come and try our coffee at the **RURAL CAFÉ**



In the centre
of Redesdale
*Now serving Norma's
famous apple pie!*

Mon - Thurs 8am-4 pm
Fri - Sun 8am-5 pm

**A great place to stop for all day breakfast, lunch, excellent coffee
and fresh cakes.**

Phone: 03 5425 3271

creative designs for your business

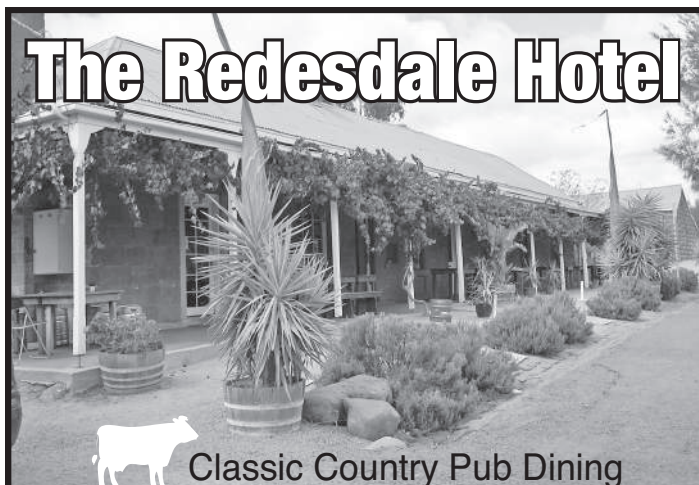
logos menus flyers posters
invitations brochures magazines
business cards advertisements
letterheads with compliment slips
full business imaging

lyn ingles | graphic designer
blupen@ncable.net.au
0429 911 980

Sponsoring the 'Bridge Connection'



The Redesdale Hotel



Classic Country Pub Dining

**For bookings
please call (03) 4405 0601**

Monday - Closed
Tuesday - Closed

Wed to Sun • Lunch 12noon - 2.30pm
• Dinner 6pm - 8.30pm

The Redesdale Hotel
2640 Heathcote-kyneton Road
Redesdale, Vic, 3444

info@theredesdalehotel.com.au



The Redesdale Hotel

redesdalehotel



www.theredesdalehotel.com.au

Letter to the Editor

PLEASE NOTE:

Views expressed in this newsletter are not necessarily the views of the publisher of The Bridge Connection.

Dear Editors

I have been reluctant to add to the conversation regarding the Redesdale Hall Committee (RHC) however I believe C. Greet, secretary of the RHC, in her opinion piece in Bridge Connection last month has totally misunderstood the issue at hand.

I think everyone in the community would agree the RHC have done a great job at managing and promoting the hall, in raising funds for the Hall and providing benefits to other organisations. This has all been achieved with the support of the community by their attendances at hall functions and donations.

The issue at hand, however, is the lack of communication and transparency emanating from the RHC. I believe the reason for this is their reluctance to embrace the new precinct development initiated by Redesdale and District Association, RADA, in conjunction with City of Greater Bendigo, CoGB, and the new governance that will be required by all participants.

Some instances of this lack of communication and transparency;

I was one of several interested members of the Redesdale Community to attend the RHC AGM on 8th May 2018 as their advertisement for the AGM advised "all welcome". We produced approx. 40 proxies of other interested community members who could not attend due to the inappropriate meeting time of 3pm Tuesday (also your regular meeting time) which precludes those with jobs and those with childcare responsibilities.

These proxies were rejected by the RHC committee, as it turns out, because NO ONE in the Redesdale District is a member of The Hall Association/committee other than the nine committee members. In other words NO ONE in Redesdale has any say in the operation of the Redesdale Community Hall or The Hall Committee other than the nine residing members of the committee.

The Chairman then opened the AGM and I noted the following;

1. There was NO welcome to the guests from the Chairman.
2. There was NO agenda offered or provided to the guests.
3. There was NO copy of previous AGM minutes provided to the guests, nor were they read out for the benefit of the guests.
4. There was NO annual report from the Chairman as to the activities of the past year, as is required in your model rules C.A.V. 30(4)(b)(i).
5. There was NO copy of the treasurer's report provided to the guests NOR did the Treasurer make any public statements as to the financial position of the Committee.
6. When a request was made for a copy of these records it was met by a terse "no".

In summary, there was absolutely NO information provided to the guests, and thus the wider Redesdale Community, on the governance and operational activities of the Redesdale Community Hall.

The Redesdale Recreational Reserve Committee (RRRC), who are the Management Committee for the whole Reserve, including the hall, together with the City of Greater Bendigo (CoGB) and the Department of Land, Environment, Water and Planning (DELWP), who are the landlords of the Reserve, have on multiple occasions requested a meeting with the RHC, to discuss the way forward with the new Precinct Development among other issues. All of all of these requests have been rejected.

Letter to the Editor

PLEASE NOTE:

Views expressed in this newsletter are not necessarily the views of the publisher of The Bridge Connection.

The RRRC, some 4 weeks ago requested the RHC hall secretary to advise available dates for the annual art show. To this date, there has been no response.

There is a simple solution to this impasse, a solution that has been discussed among some members of all parties involved, CoGB, DELWP, RRRC, RADA and DDWG; a solution that could see the current RHC still managing the hall as they currently are with no interruption to their functions for the hall. This would be a single body or committee incorporating some members of all existing committees to oversee the total use of the reserve via different subcommittees instead of the autonomous four existing committees.

I implore the RHC to grab hold of the olive branch that has been held out to them on multiple occasions and open up the lines of communication so that we can all move forward together in a positive and transparent manner.

Mike Abramowski
Redesdale



Dear Editors,

I am disappointed to read a response to my letter, which was published in your June edition. The Hall Committee, expressing their right of reply, appears to have ignored the point of my letter. My letter questioned that there were clearly no ordinary "members" of the association

The Redesdale Hall Committee Incorporated is an entity. It currently has 9 "members"- all on the "committee"-and there are no other members of this entity. It is apparent there is no register of ordinary member- and no ordinary members. Thus only the Committee members could vote for re-election to the committee, supported by the approval of each other of the nine members. That is the protected autocratic status to which I referred in my first letter. One wonders how there can be a "committee" if there are no ordinary "members"? This situation may be seen to be a negation of the Articles of Association, if not of the lease offered by DELWP (Department of Land, Water & Parks) to the Hall Committee, for the benefit of the community of Redesdale.

The result of this flawed concept of an incorporated body was made evident when proxies collected from the community to nominate for membership of the committee – or in support of such nominations- were deemed invalid on the basis they were "not from members". (In the response to my previous letter) the Committee states, regarding membership, that "newcomers to the district have always been welcome to join the Committee". This is at odds with what actually was the case at the so-called "AGM" when all proxies were denied.

My letter was not to diminish the real contribution of the current long-standing committee which has, for many years, worked hard for the events and money they have raised. They have been a much needed part of this small community. Nor was it to diminish the hard work of others of the community who contribute enormously, like the CFA. My point is that these people, like John Barker, are not even ordinary "members" of the Hall Committee and cannot be voted onto the Committee by the general public.

Continued next page...

Letter to the Editor

PLEASE NOTE:

Views expressed in this newsletter are not necessarily the views of the publisher of The Bridge Connection.

From previous page...

Hence they have no say in the strategies which govern our biggest asset, the Community Hall, in what may guide its development, on how it is promoted, used, run...every aspect of contributing in a real way the community. As was indicated in my previous letter, they deserve to be heard, play their part.

Redesdale is rapidly growing and is attracting young interested people, with exciting new ideas and skills. We must not stand in the way of accessing such potential contributors. Redesdale will only be enriched by embracing them.

We are fortunate that the Bendigo Council is confident we are worthy of financial assistance to grow -and it is important the Council has evidence we are embracing change and encouraging new talent to help us develop and diversify our offering as a community. It has indicated it is prepared to assist the Redesdale region, to help us move into a more structured and positive growth pattern- beneficial for all.

Please let us not stand in the way of the opportunity for proper growth with petty anguish! Embrace change for the benefit of all.

Yours sincerely,

S.K.Arnall

Musaale Volunteers head to Uganda again

Musaale Australia Ltd is a charity supporting a number of projects in Uganda. Now based in Barfold near Kyneton the organisation has taken teams of volunteers to Uganda to assist with the projects in Kampala, Laminodera, and the small rural village of Bwagogo. At present they have a Community Centre in Bwagogo that has 30 sewing machines to teach the ladies of the village to sew and a woodworking project to teach the men to do basic carpentry. The Community Centre is also used to conduct Medical Clinics as most villagers have never seen a doctor apart from the village witch doctor.

The Musaale team support 4 local primary schools providing resources to them and they have a small sponsorship program for 'at risk' children to ensure they are able to attend school and have enough to eat.

Last year many local Kyneton businesses and individuals donated goods which were sent in a Shipping container to help resource the Musaale projects. Many thanks to all those who donated. The container was unloaded in October and goods distributed to those in need, the schools and to children in one of the slums in Kampala. This September another team, including a number of locals, is traveling across to help commence the woodworking project, fund a bus and an aquaculture project. Further resources will be provided to the schools and sponsor children. For information check out Musaale.org

A Fundraiser Musical Soiree featuring local musicians including a Silent Auction and Dessert took place at Sacred Heart Quambi Centre on Saturday 18th August. If you would like to help this worthy cause, please call 0425 812 786.

creative designs for your business

logos menus flyers posters
invitations brochures magazines
business cards advertisements
letterheads with compliment slips
full business imaging

lyn ingles | graphic designer
blupen@ncable.net.au
0429 911 980

Sponsoring the 'Bridge Connection'

blue
blue pencil publishing



BRIDGE CONNECTION
COMMUNITY NEWSPAPER

FUNDRAISER

Saturday 6 October
from 6.30pm at the Redesdale Hall
MC: Lady Bombay Sapphire

Featuring
Jefferson Smith
THE VOICE

raffles music silent auction & more...

For TICKETS phone 0407 116 899



Sacred Heart College Teacher Viv Penney and local identity Lynne Walker with some of the villagers and sponsor children.



A very happy recipient of a wheelchair from the container. Prior to this he had to be carried or crawl along the ground.

BRIDGE CONNECTION

APPRECIATION TO OUR SPONSORS

THANK
YOU

Blue Pencil Publishing
Redesdale CFA
Elphinstone General Store
Kyneton Copy Centre
Kyneton Vet Hospital
Redesdale and District Association
Redesdale General Store
Redesdale Hall Committee
City of Greater Bendigo

DON'T MISS OUT
ON AN ISSUE!

SUBSCRIBE TO THE
BRIDGE CONNECTION
COMMUNITY NEWSPAPER

If you are unable to
receive a RELIABLE
FREE DELIVERY of the
BRIDGE CONNECTION,
you may subscribe for
POSTAL DELIVER for only
\$25 per year.

BE INFORMED
ON LOCAL NEWS.



Please contact the Treasurer on:

(03) 5425 3262 OR email

bridgeconnection.editor@gmail.com

Litter is a burning issue

Environment Protection Authority Victoria (EPA) issued 12,000 litter fines in 2017-18 and the litter that annoyed Victorians most was the lit cigarette.

Cigarettes are the most common litter and the type most commonly reported by the public.

More than three quarters of litter reports to EPA involve cigarette butts tossed from vehicles, and more than half involved a cigarette that was still burning.

Other litter fines were for food packaging, drink containers and other small items. Litter contaminates the soil, chokes waterways and endangers wildlife, and a lit cigarette is a serious fire hazard.

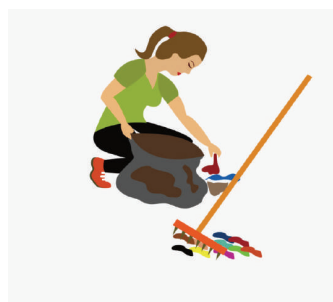
EPA's litter reporting service gives the public a clear mechanism for reporting people who throw litter from a vehicle, by using the car's registration number to track down the alleged offender.

You can report littering at www.epa.vic.gov.au or by calling 1300 EPA VIC (1300 372 842). It's important to be willing to give evidence in court if the alleged offender challenges the fine, but if you get the details right, most of them just pay the fine.

Your report should identify the car, describe the person, describe the litter and how it was disposed of, and the time and place where it happened.



Environment
Protection
Authority Victoria

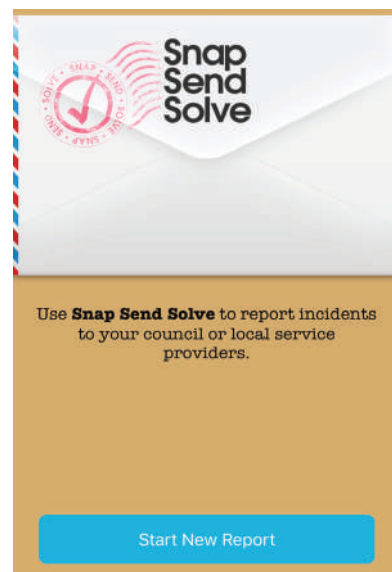


Let's do it!
See community
clean-up poster
on page 11

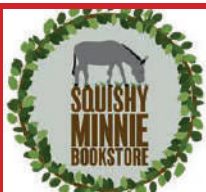
Download the

"Snap Send Solve"

app to your
smartphone to
report rubbish in
you area instantly
to authorities.



BIRD QUIZ with NIGEL HARLAND



Last month's bird was the Straw-necked Ibis, which is a common resident of our district. It is usually found in large flocks in paddocks on the side of roads. The name comes from the yellowish plumes which can be seen on the neck. Grasshoppers are a major source of food and its local name is the Farmer's Friend! There are three Ibises found in Australia, the White Ibis is the common equivalent, being of the same size with a totally white body and black head. A much more rare type is the smaller Glossy Ibis. Our bird for next month is a Honeyeater often found in our region.

If you think you know what bird this is, and you haven't received a prize before, please send in the name of the bird and your name, email and postal address and you could be in running for a \$20 book voucher from **Squishy Minnie Bookstore** in Kyneton. Send it to : bridgeconnection.editor@gmail.com

A good life deserves the best farewell

**WILLIAM
FARMER**
FUNERAL DIRECTORS

Andrew and Heather Hampton

151 McCrae Street Bendigo
12 Victoria Street Eaglehawk

P: 5441 5577

www.williamfarmer.com.au

A tradition that continues...

Todd PROPERTY

Real Estate Sales
& Property Management
with Service.



Brad Todd
Director



Barb Walker
Property Consultant



Kristy Webster
Property Consultant

'We help make dreams a reality'

5433 2288
95 High Street Heathcote

OPTOMETRIST NOW OPEN IN HEATHCOTE

Open for appointments **TUESDAYS & FRIDAYS**

Great frame range - complete glasses from \$99

59 High Street Heathcote

For appointments please phone: **4411 6802**



THE OPTOMETRIST
Heathcote

CHARLIE CARP

ALL PURPOSE FERTILISER




**'The perfect liquid fertiliser...
producing bumper crops &
cleaner rivers'**

European Carp are the 'rabbits' of the rivers, in many waterways they make up to 90% of the biomass making it a struggle for our native fish to survive.

The smart people at Charlie Carp are turning these pests into a positive. They take the Carp out of the rivers and turn them into the perfect liquid fertiliser.

Just like fish oil is good for us, Charlie Carp is full of the essential trace elements that promote healthy root growth and a strong immune system. Fast acting and so easy to apply through watering systems.

Charlie Carp is the perfect liquid fertiliser - producing bumper crops AND cleaner rivers.....now that's a bonus.

Available at Bunnings, Mitre 10 and all good gardening stores, or call our factory direct for 200 and 1000 litre shuttles, delivered to your door.

Jason Hodges
Professional Landscaper & TV Presenter



For the full Charlie Carp story and product information visit us at www.charliecarp.com

Palmer Stevens & Rennick

Barristers & Solicitors *Founded 1852*



Palmer Stevens & Rennick

provide advice to clients all over Australia.

- Powers of Attorney
- Wills and Estates
- Criminal Law
- Conveyancing
- Property Law
- Family Law
- Agribusiness Law
- Commercial Litigation
- Traffic Law and Toll Fines
- Appearing in Castlemaine Court
- Pre purchase advice for large Agribusiness Assets
- Compensation for Government Acquisitions



Mr Joseph Palmer
Founder of
Palmer Stevens & Rennick

8 Jennings Street, Kyneton
or P.O. Box 1, Kyneton Vic 3444
Phone: (03) 5422 6500 Fax: (03) 5422 3385
Email: psr@psr.net.au

Kyneton Toyota



TOYOTA

Locals supporting locals

Kyneton Toyota

24 Bourke Street, Kyneton Vic 3442

Ph: 54 210 210