

ISSUE NO. 115 October 2020

FREE

For the Mia Mia- Redesdale Region including:

- Heathcote • Derrinal • Glenhope • Baynton • Sidonia • Barfold
- Langley • Sutton Grange • Elphinstone • Kyneton • Metcalfe

BRIDGE CONNECTION COMMUNITY NEWSPAPER



facebook.com/RedesdaleMiaMia

Happy 80th Birthday Gloria

and a 'BIG Thankyou' from the community for your service to RADA.

The Redesdale Community would like to wish **Gloria Pocock** all the very best for her retirement and thank her for her input, hard work and commitment whilst serving on the Committee for RADA. Gloria has been instrumental in launching many events and social occasions during her tenure. We hope to see her still in our community enjoying herself and now having time with family and friends.

Thank you Gloria.



Gloria celebrating her 80th Birthday with family and friends.



Gloria and Les Pocock.

COVER CONCEPT COURTESY/blue pencil publishing

continued page 9.

We're open 9am-5pm Monday to Friday or call us on
(03) 5433 3115 to speak to a friendly staff member.

heathcotenagambie.community

Community Bank
Heathcote & District

B Bendigo Bank

Café Budburst



Redesdale (formally Rural Café)

**Coffee, tea, all day breakfast, homemade cakes,
pies, sausage rolls, local produce
and lots more**

Phone or Text for table bookings

0407 551 578

Connect on

Instagram #cafebudburst

and Facebook to keep updated on our progress

Editorial

Dear Readers

Welcome back again hopefully everything will be back to normal by the start of the New Year

The Bridge Connection was Saddened at the passing of Mary Bennett or past President and general Committee member.

We would also like to wish Gloria Pocock a Very Happy 80th Birthday.

We are also glad to see the Cafe and Pub back in Business.

Stay Safe.

Regina Bennett.



Regina Bennett

Editor: Regina Bennett

Ph: 0437514223

e: bridgeconnection.editor@gmail.com

BRIDGE CONNECTION COMMUNITY NEWSPAPER

Advertising Rates/Sizes

Size	Height x Width	Price per issue	10 Editions
Business Card	55mm x 90mm	\$25	\$250
Quarter Page	130mm x 90mm	\$50	\$500
Half Page	130mm x 190mm	\$95	\$950
Full Page	270mm x 190mm	\$175	\$1,750

Colour Advertisements plus 20%.

Please send editorial or advertising copy to:
bridgeconnection.editor@gmail.com
or by post to **Regina Bennett 3465 Burke & Wills track Mia Mia 3444.**
For other editorial enquiries, please phone **0437 514 223**

Bridge Connection Distribution

950 Copies printed and distributed to Redesdale Mia Mia Region, including Barfold, Baynton, Derrinal, Elphinstone, Glenhope, Kyneton, Langley, Metcalf, Sidonia and Sutton Grange

Disclaimer: The Bridge Connection Inc. Committee wishes to advise that the views or remarks expressed in this publication are not necessarily the views of the volunteer Bridge Connection Inc. editorial or production team and no service or endorsement is implied by the listing of Advertisers, sponsors or contributors. Although every effort is taken in reproducing and printing advertisements correctly, we take no responsibility for errors.

Management Committee

President :	Jill James	0418 388 919
	jill@colibanestate.com	
Secretary:	Regina Bennett	(03) 5425 5402
	bridgeconnection.secretary@gmail.com	
Treasurer:	Terry Mackenzie	(03) 5425 3262
Magazine:	Regina Bennett - Editor	0437 514 223

Bridge Connection - Mission Statement -

The mission of **Bridge Connection** is to bring people together by:

1. Providing information about local issues, goals and events, and to celebrate local achievements,
 2. Encouraging economic growth in the area
 3. Fostering geographic identity, and
 4. Providing a platform for public debate
- Bridge Connection is published by local people who volunteer, for local people as a **free paper** and on line at **redesdale.net** and via **face-book**



[facebook.comRedesdaleMiaMia](https://facebook.com/RedesdaleMiaMia)



General Store Liquor Store

<p>AUSTRALIA POST</p> <p>Fully Electronic Postage Service</p>	<p>Come in for some great tasting...</p> <p><i>Coffee</i></p>	<p>Weekly NEWS</p> <p>Newspapers & Groceries</p>
<p>Banking Facilities</p>	<p>Full alcohol licence and bottle shop with local wines.</p>	<p>Takeaway Food Service</p>
<p>Fuel & Oil</p>	<p>Hours: Monday to Friday 7am to 9pm Saturday & Sunday 8am to 9pm</p>	

RJ REDESDALE / Manager: Kishan

Phone (03) 5425 3154
2609 Main Road, Redesdale



Mary Minette Bennett

7th September, 1936

5th August 2020

part of Mia Mia's history and she was proud to be part of the community.

Mary was determined to stay living in Mia Mia for as long as possible, even when her health was failing. She managed to stay in her home for as long as she did, with the continual help and support of Matthew and Regina, who were always on call and along with her next door neighbour Yvonne, who would pop over often, to check on her.

And for that we say Thank you.

Mary always loved talking about history and nothing better than family history. Ken Slee (Mary's cousin) made a book about the "Slee Family". She loved getting involved and finding out how the family came about. She loved her Slee cousins and her Hoopell cousins and her own brother and sisters very much. She would often visit or have long phone calls to her brother and sisters. When her two sisters passed, she missed them terribly. Mary then cherished her only sister (Marion) and her brother, (Arthur) very much. Family meant the world to Mary.

In the later years Mary's most proudest moments were her grandchildren. She had 17 grandchildren and she loved every one of them. They are Meikala, Jarrod, Laura, Brooke and Tom, Glenn, Claire, Emily and Scott, Rachel, Madeline, Andrew and Cameron, Connor, Meghan and Liam and Jorjia. She would enjoy listening and finding out what they all were up to. When some of the granddaughters moved away from home and she didn't see them as often, she would often write to them. She continued writing and receiving letters even when they moved over and over again, up until the day she died. She was extremely proud of the careers they had all chosen and who they had become. And now she was starting to enjoy her four great grand children, Chloe and Sam and Lachlan and Henry.

It is with great sadness that we say good-bye from us five children along with our partners, Peter and Helen, Helen and Ross, Margaret and Pat, Christine and Mark, Matthew and Regina, but we know that she has had a full life, even with her ongoing health problems. We know that she is in a better place and that she is with dad now, who she has missed deeply ever since his death eight and half years ago.

Rest peacefully Mum

Love Peter, Helen, Margaret, Christine, Matthew.

Mary Minette Bennett was born on the 7th September, 1936. Daughter to Allan and Minetta Hoopell. Mary had three sisters, Clare, Doreen and Marion (Happy) and one brother, Arthur. Mary lived on a farm outside Woodend on a property called "Moorlands". Mary never lost the love for that farm. Many times when her children were young, Ted and Mary would travel to "Moorlands" to visit her father, brother, sister-in-law and family. Mary met Ted at an agricultural ball in August of 1957 and was married a year later. Mary probably was always meant to be a farmer's wife, as she also enjoyed farming with Ted on the "Coolibah" farm at Mia Mia. She enjoyed being out in the paddocks helping Ted along with their children.

Mary had a huge garden that she spent many hours digging, moving rocks and putting barrow loads of sheep poo on the garden to make the veggies, flowers and fruit trees grow. The soil at Mia Mia was very hard and dry compared to the soil at Woodend and it took a lot of work to get anything to grow, but Mary persevered and her garden was beautiful and it gave her a lot of joy.

Mary enjoyed her many friends in the Mia Mia community. She was involved in the Bridge Connection as the weather person, always recording how much rain Mia Mia had received. She was also President of the Bridge Connection for a little while. She enjoyed the monthly meetings along with the chats and cups of tea. Mary was a proud member of the Mia Mia community. She was involved in the Mia Mia Church, Mia Mia Hall and the Mia Mia Fire Brigade. She believed in keeping the community strong and healthy for generations to come. Mary enjoyed many events, cups of tea and chats held at these places.

Just recently Mary enjoyed the tribute to the plane that crashed on Reg Bennett's property in 1945. It was marking the 75th anniversary of its crashing. Even on that day of the tribute, Mary was not feeling very well, but she felt it was important that she be there, as this was



The Bennett Family would like to thank the Mia Mia and Surrounding Community for the Guard of Honour that was arranged to farewell Mary.

Thank You



**Redesdale &
District Association
AGM
Nominations close
Wednesday November
4th
Contact Lisa Smith on
0411 035 000
or
info@redesdale.net**

**Mia Mia
Mechanic Institute
Flower Show
2020
Cancelled
Hope we can Organise
a community
get together for
Christmas.**



“Think about who you love, then think about them in ICU.”

For Sarah, who's been battling coronavirus for nearly 8 weeks, being separated from her two little boys, has been heartwrenching. On top of coronavirus attacking every one of her body systems, intense pain and acute breathing difficulty, she still has no idea when she will be well enough to see her boys. Sarah's hope is that by us all doing the right thing, no one else will have to experience the heartache her family has.

Please, play your part and help stop the spread of the virus. If you have symptoms - please get tested. Payments of \$450 are available to help you stay home and wait for your test result.

**STAYING
APART | KEEPS
US | TOGETHER**

**To learn more of Sarah's story go to
vic.gov.au/CORONAVIRUS**

Authorised and published by the Victorian Government, 1 Treasury Place, Melbourne





We can spread **any amount** that you supply, usually off the ground via industrial loader. We can also get a **bulk load** and deliver to a number of smaller properties if required.

FERTILISER SPREADING SERVICE



**Contact
for a quote**

Please contact
Carl 0412 144 936
or **David 0427 546 586**

email: carl@glendarling.com.au
119 Darlington Road Baynton VIC 3444

No job too small,
no job too big,



HIGH QUALITY AGRICULTURAL SHEDS

Trust us! We've done it before

"The Central Steel Build experience exceeded our expectations. The strength of the shed design was far greater than other sheds. The whole team were professional and the end result magnificent"

- Machinery Shed, Womboota

Central
Steel build

1300 955 608
8 Hoyle Court, Kyneton

Redesdale Hall



FOR HIRE

Amenities are available for catering, meetings, weddings and club or family celebrations.

Please phone

Carolyn (03) 5425 3194 for more information.

Redesdale Hall Activities:

- 2nd Tuesday monthly, 1pm - Hall Comm. Meetings.
- 2nd Tuesday monthly, 7 pm - Rec. Reserve Meetings.

Redesdale

[HOME](#) [HISTORY](#) [COMMUNITY](#) [BUSINESS](#) [BRIDGE CONNECTION](#) [LOCAL THINGS TO DO](#) [EXPLORE THE REGION](#)



Visit Redesdale Website

Welcome to Redesdale.

Calendar

www.redesdale.net

Elphinstone Post Office & General Store

*'In the heart of the
Elphinstone community'*



- Newspapers/ Magazines
- Origin Gas Bottles
- Bread • Milk & Groceries
- Postage Services

*'The General Store where
community meets business.'*

Gill & Dave (03) 5473 3200
9 Bateman Street, Elphinstone

Campaspe Valley Land Care Group

Local weeds & Landcare

Your local landcare group (Campaspe Valley Landcare) has been active in a number of projects around the district. One of our guiding principles is to work on improving the local environment, to benefit all of us. We plant trees and shrubs, remove rubbish, help the local wildlife (by installing nest boxes) and attack the region's weeds.

Our members are all volunteers and we often contribute not just our time and sweat, but also our own money much of the time, to achieve our goals. Some of our work is part-funded by the state government and by private concerns, all for regional benefit. Of course, we do not work on private land, unless the landholder has asked us, and we do not work on public reserves without consultation with the relevant land manager. As most of the land in our region (roughly, from the northern outskirts of Kyneton north to Lake Eppalock and both east and west of the Campaspe River) has been long cleared for productive agriculture, we often find our opportunities on roadsides and other small strips of unreserved public land.

Weeds are one of our major concerns. Weed control on private land is the responsibility of the landholder, but the Landcare Group works hard to ensure that the efforts of private landholders are not torpedoed by repeated weed invasion from adjoining roadsides and the like. Some of the region's most problematic weeds are discussed below :-

- **Gorse** (*Ulex europaeus*) – Gorse is a particular priority of local farmers. It takes up good pasture (reducing useful forage), can damage young lambs and provides harbour for rabbits and foxes. The state's Gorse Taskforce has been of considerable help in our efforts. We all (landcare & private landholders) have a long way to go yet, but Gorse is now noticeably less common in our region than elsewhere.
- **Paterson's Curse** (*Echium plantagineum*) – This annual is a perennial problem. It can grow so densely that it reduces the space available for useful fodder plants. There are reports of stock poisoning, particularly of horses, but it's usually avoided by stock as the foliage and stems are covered in chaffy bristles.
- **Cape Broom** (*Genista monspessulana*) – This Mediterranean shrub was first proclaimed (as a problem or noxious weed) in 1896 for the Shire of Kyneton. It can grow very densely (especially after fires), to the exclusion of useful fodder, and provides harbour for rabbits and foxes. It's not usually toxic to stock unless grazed heavily.

- **Gazania** (*Gazania linearis*) – This bright daisy hails from South Africa and is currently rapidly spreading on regional roadsides. To date, it's not well established around Redesdale and, conscious that the best time to attack weeds is before they become well-established, we've been working on reducing its spread.

These are only a very small sample of the regional weeds. Note that they all derive from garden escapes. They were brought into our gardens and spread precisely because they're attractive and hardy. But plants do not recognize land title boundaries and these have all 'jumped the garden fence'. Indeed, most of our listed weeds (2/3 of them) derive from attractive garden plants. Weed control costs agriculture more than \$4 billion every year! So, please be careful. Make sure that your attractive garden plants will not 'jump the garden fence' and become next year's spreading weeds. There is a few books, such as *Grow me instead*, that offer suitable non-invasive alternatives to garden plants that may become invasive. This is available online at

<http://www.growmeinstead.com.au/region/victoria.aspx>.

Proudly printed in Kyneton

Castlemaine, Kyneton & Gisborne
CopyCentre
Printing together for our community

Design & Pre-press
Plan Scanning, Finishing Services.

*Not just a Copy Centre...
we are so much more.*



www.windarring.org.au

58 Mollison Street
Kyneton
03 5422 2400

Letter to the Editor

PLEASE NOTE:

Views expressed in this newsletter are not necessarily the views of the publisher of The Bridge Connection.

Thanks Gloria!

I have only had the pleasure of knowing Gloria Pocock for 8 years which makes me a very recent newcomer among her friends. Gloria has heaps of friends from school days, nursing days, motherhood, arts at university, pottery and so on. More recently she has developed firm community friendships through her tireless work with the Redesdale and District Association (RADA). This is how I had the pleasure of meeting her.

Gloria has just resigned from her position as Chair of RADA and hers will be hard shoes to fill. She has hardly missed a meeting since 2012 and has served in various positions. In the early days she was also treasurer of the Hall Committee whilst setting up the District Association. If I try to list all her achievements, I'll probably miss some out, but here is a broad brush of some of the things she has done:

Gloria was the instigator and organiser of the Redesdale Festivals and Art Shows, she was always behind the scenes with her sleeves rolled up during cricket matches, "Dinners and Talks", and numerous community meetings. She has worked on both the community plans produced by RADA in the last 8 years. She has served in liaison positions with rural advisory groups for the City of Greater Bendigo. I have lost count of the number of grants she has applied for and succeeded in obtaining for the community.

As if this wasn't all enough, Gloria ran a terrific book club for a number of years, and many of us would like her to start it again! She was also one of the key participants in making the 150 year commemorative quilt for the Redesdale bridge 150 year celebration.

John Quincy Adams once said, "If your actions inspire others to dream more, learn more, do more and become more – you are a leader". Gloria is a true leader. But she's more than that. When I spoke to her the other day about her leaving RADA and all the projects and events she has had a hand in, she said, "We had a lot of fun, didn't we?" Yes we did. We had a lot of fun...and I think we'll have some more.

Thanks Gloria,
Kathy Hall

Dear Gloria,

The Current Committee of RaDa would like to congratulate you on your retirement. We have enjoyed working with you. While you will be missed by all of us on RaDa you certainly deserve your retirement. Your hard work, energy and enthusiasm to make Redesdale a great place to live has been a benefit for us all. Your contribution to our overall community plan and guidance has been exceptional and we will try to be the self directed committee that will keep on striving to make our town a place with strong community groups. Many thanks from all of us.

RaDa Committee

**creative
designs
for your
business**

logos menus flyers posters
invitations brochures magazines
business cards advertisements
letterheads with compliment slips
full business imaging

lyn ingles | graphic designer
blupen@bigpond.com
0429 911 980

Proudly Sponsoring
assistance to the 'Bridge Connection'



CONNOLLY GLASS

- Broken Window Repairs • Mirrors
- Balustrades • Splashbacks
- Shower Screens: Framed
- Semi Frameless & Frameless
- Retro Fitted

**Double Glazing & Commercial
Window Frames & Glazing**

0428 535 101

177 Lyell Road, Redesdale. Vic. 3444

Email: chrisjen@bigpond.net.au

STONE RESERVE HERITAGE WALK

We need your feedback

Overview

The Redesdale and District Association has been working with the City of Greater Bendigo (COGB) to advance the possibility of developing a walking track from the Redesdale township through Stone Reserve to a vantage point at the hilly north-eastern corner of the reserve which overlooks the Redesdale Bridge. It is proposed that there will be history boards under a shaded shelter where visitors can read about the bridge, local history and surrounding fauna and flora. Currently the reserve is strewn with rubbish and is very neglected. The project has had enthusiastic support from the Redesdale and Mia Mia Primary School, the Redesdale Recreation Reserve Committee and Campaspe Landcare. We are now asking for feedback from the rest of the community about the proposed improvement of the reserve.

Please email: stonereserveredesdale@gmail.com with your comments. The Strategic Plan for the project can be viewed at the redesdale.net website.

Background

In January 2018, Redesdale, Mia Mia and surrounding districts celebrated the 150th anniversary of the naming of the Redesdale Bridge. It was a large event held in the Redesdale Hall and included a re-enactment video of the naming of the bridge, a video of local residents sharing their memories of the bridge, and displays of the bridge's history and engineering.

The organising committee was keen for visitors to be able to see the bridge close up, and for the opening re-enactment to be held at the bridge. It became clear, after discussion with the COGB and with Vic Roads that it was going to be impossible for any part of the event to be held at the bridge. There was nowhere for safe parking of vehicles or for crowds to gather at any point near or overlooking the bridge. This is why the event was held at the Redesdale Hall. In fact there is no safe place for interested tourists or locals to view the bridge and quite often people stop to view the bridge in very dangerous places.

It was therefore with great interest that residents had the opportunity to view the Greater Bendigo Public Space Plan when Mark Stubbs (Senior Strategic Planner for Regional Sustainable Development, CoGB) visited a meeting held by the Redesdale and District Association (RADA) in March 2018. The Public Space Plan was developed as a long-term strategy for the municipality's public spaces – the parks, garden, creek corridors, green corridors, bush land, sports reserves, streets and road reserves, urban spaces, rail corridors and easements. What sparked the interest of attendees particularly was a small parcel of land south of the Redesdale Bridge which appeared to be Crown Land.

A deputation from RADA set off during April 2018 to inspect the land and it was discovered that not

only was it picturesque, but it also gave an ideal view of the bridge nestling among the hills. Following clarification of the ownership of the land and a visit to Mark Stubbs at the COGB, it was decided to pursue the possibility of developing this area for use by the public; both local residents and tourists. The reserve land is close to the Redesdale township where there is excellent parking.

A Stone Reserve subcommittee of RADA was formed to follow up possibilities for the project's progression. Mark Stubbs encouraged this endeavor as it was a good example of a potential positive outcome from the Public Space Plan. Andrew Plant, Strong Communities Officer at COGB was appointed the liaison person for this project.

It was learnt that the Department of Environment, Land Water and Planning (DELWP) had ownership of the reserve and that Parks Victoria were the managers. Some community members had been under the impression that the Redesdale and Mia Mia Primary School owned the reserve. The school principle discovered that in the 1950s cypress trees were planted as part of the "School Forestry Program". In the 1990s the trees were felled and the school replanted native vegetation. There was no evidence that the school had ever owned the land.

It was felt that the improvement of the reserve for the benefit of visitors and local residents would fulfill a number community aims set out in the 2013 and 2018 local community plans. Also, the 2019 Healthy Heart of Victoria Active Living Census was conducted and 13,000 people from Greater Bendigo responded. By far the most popular activity for adults was walking.

A key component of the community plans for both Mia Mia and Redesdale in 2018 was the development of a walking and/or biking trail linking the two townships, preferably with a walk reaching and crossing the Campaspe River. Whilst the Stone Reserve project cannot, at this stage, go as far as linking the townships, it can potentially form the groundwork for further development in the future.

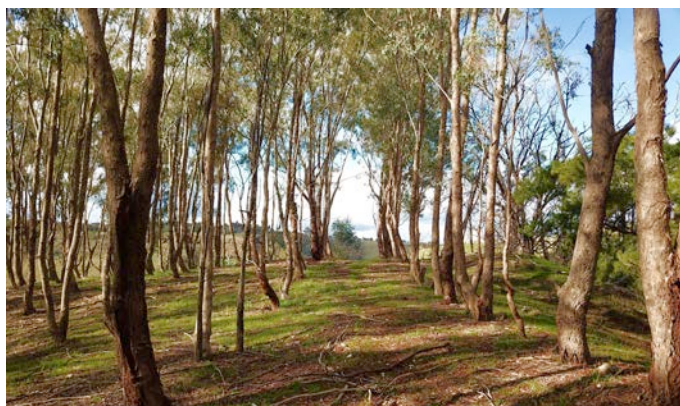
The history of Redesdale and Mia Mia has been the subject of much investigation of late. A number of residents have gathered information which would be of great interest if displayed at the end of a scenic walk culminating in a viewing area with boards depicting historical events. In fact there was considerable disappointment that this could not be achieved for the sesquicentenary owing to a lack of appropriate real estate or safe viewing areas. There were also offers from established local artists to donate their time and skills to create a unique commemorative depiction of the bridge's history set into local granite. The recurring problem with all this enthusiasm was a lack of an appropriate site for such an endeavor.

Stone Reserve offers a completely appropriate site for a heritage monument. It could become a safe place to view walk, rest, view and learn.

The Stone Reserve subcommittee was waiting for the completion strategic plan before setting up a community meeting to discuss the project. Now, because of the pandemic, we are unable to hold a public meeting. That is why it is so important to have your say and feedback your thoughts regarding the proposed Stone Reserve Heritage Walk.

Please email: stonereserveredesdale@gmail.com with your comments. The Strategic Plan for the project can be viewed at the redesdale.net website.

Kathy Hall
Stone Reserve Subcommittee
Redesdale and District Association



The quilt book is ready

Thanks to a generous grant of \$1216 from the City of Greater Bendigo, the story behind the sewing of the Commemorative Quilt is now published and available for those interested. It is a 28 page book full of colourful photos and is available for \$20. Lynny Ingles of Blue Pencil publishing gave her time generously to assist with the graphic design.

If you would like a copy, please ring 0407 116 899 or email info@redesdale.net



SUPPORT YOUR ADVERTISERS

'THE BRIDGE CONNECTION COMMUNITY NEWSPAPER'

...is **supported** by **local businesses** and it is important, in return for the community to **support them**.

For rural regions to succeed in business they need the 'locals' to keep them viable by conducting business in our township. So! next time you need something for a job that you are working on... look to the **'Bridge Connection'** and give a **LOCAL BUSINESS** a try.

BUY LOCAL
WHERE YOU
ARE ABLE TO.

SUPPORT THE TOWN THAT
SUPPORTS YOU... THANK YOU!



To advertise in the 'Bridge Connection'
please contact the Editor

Regina Bennett on: 0437 514 223 OR email
bridgeconnection.editor@gmail.com



Support your **community newspaper** the
'Bridge Connection'
who is supporting **your community**.

Visit: **www.redesdale.net**
district, events, businesses and news.

For more information turn to **page 3**
for advertising rates or call and chat to
Editor - Regina Bennett 5425 5402.

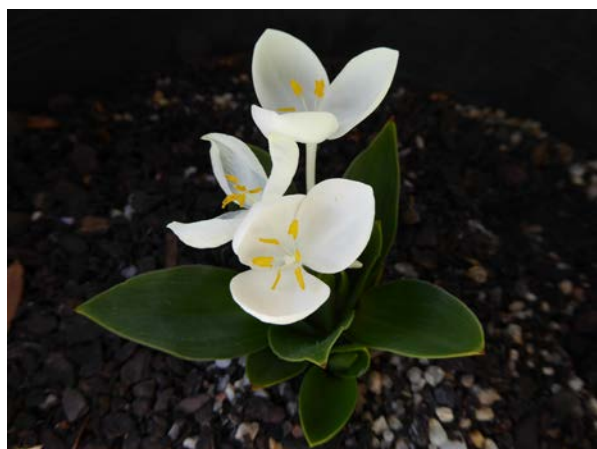
'Bridge Connection' Community Newspaper

Redesdale Ramblings

Some flowers worth the effort

Usually I like to promote growing plants suited to our region and climate. This makes things a lot easier in terms of frost hardiness, drought tolerance and the likelihood of successful cultivation. It also means you can be a bit lazy in maintenance because the plants should relish the growing conditions so need less attention. However this would curtail the growing of many interesting plants from around the world – would we be without tomatoes which strictly speaking come from more moist, frost-free areas in South America? We simply have to modify how we grow them – around here the tradition is to plant them out on Cup Day, well after any danger of frost (unless you have the luxury of a heated glass house). Similarly there are a few plants we grow which have to be protected from winter wet and summer dry.

The first one to mention is the little known Mexican flower called **Weldenia candida**. This produces pristine white tri-petalled blooms in summer above dark green rosettes of foliage. It grows from a mass of tuberous roots a bit like a small asparagus crown. When dormant in winter these are very susceptible to rot so I find it best to grow it in a pot and keep it under cover once the foliage has died down. I've never found seeds on them and I presume it's because we only have one clone of it and it is self-sterile. However it propagates readily vegetatively – by division and by cuttings. After storing the pots over winter I un-pot the plant in early spring just as it starts to shoot. Growing in a sandy mix the soil falls away from the roots to expose the crown and any offsets. With some gentle tweaking the individual crowns can be extricated and potted separately. Soon the leaf rosette will develop and then a white tubular bud will emerge and expand into an almost triangular blossom. It is reminiscent of the flower of *Tradescantia* which is a relative. After flowering the plant usually produces several leafy shoots from the crown. These can be detached or snipped off to be treated as cuttings. In a sandy or a peat and perlite mix the cuttings will produce roots and if taken early enough in the season these will persist through the winter to re-shoot in spring.



Weldenia candida flowers

A friend in the Dandenongs grows *Weldenia* in her garden though she tries to protect it from excessive rain during Winter. Although rare in Australia it is becoming available from specialist nurseries.

The "Pineapple Lily" was a popular plant in gardens when I was a kid because of its curious top-knot of leaves similar to a pineapple. *Eucomis comosa* and its hybrids were the ones usually seen and grew over half a metre tall. There are some smaller species and two that we have are ***Eucomis autumnalis*** and ***Eucomis vandermerwei*** which flower at less than 20 cm high.

The first is virtually a miniature version of *E. comosa* with a column of small greenish stars while the second has darker leaves heavily spotted in purple and the flowers are similarly a dark purplish-maroon. They grow from bulbs which usually produce offsets which is a handy way to increase your collection. They will also produce seeds which can provide more plants which may also vary from their parents. *Eucomis* are also able to grow from leaf cuttings! A fresh, mature leaf can be cut crosswise into pieces and inserted into propagating mix where roots will develop and a small bulb will form attached to the "mother" leaf. Although these are probably less susceptible to winter wet I prefer not to take the chance with these and keep them potted.

Platycodon grandiflorus, the Balloon Flower, is related to *Campanula* but forms a tuberous root which persists over the winter when all the top growth disappears. I never had success with this very common garden plant till I started growing it in pots and keeping it dry in winter. It has grey-green toothed foliage and in late spring produces buds which swell up to be a bit like a balloon hence the common name. Each bud expands into an open star, sometimes doubled like a star on top of a star. The typical colour is a mauvey-blue, often termed "campanula blue" but can also be white or pink. Some new selections have bicolour or speckled flowers which can be quite attractive.

cheers

fermi

The Redesdale Rock Gardener



Eucomis vandermerwei



Lady Sapphire Bombay

Hello dear readers,
Lady Bombay here with notes from my diary and not about gardens. Thank goodness I have retained all those Chanel scarves which accumulated in my chest of drawers all these years. Very colourful and useful to wear across the face for supermarket shopping and the like.

As Lord B has been delving into Facebook these days. He notified me the other day that Mimi Thorndike was looking for me. He didn't remember the name and I certainly did as she was one of my seven bridesmaids. With growing families and busy lives, we lost contact some thirty years ago. According to her profile, she is living in Mt Macedon and would like to catch up. Out of curiosity, I replied and were invited to afternoon tea. Remembering Mimi, Mt Macedon would be right up her alley. She married well and from memory had lived most of her life in Toorak, so I was only to assume that she had downsized.

With a rather complicated set of directions, Thorn, the gardener, dressed in his chauffeurs uniform and I left Mia Mia Manor in the highly polished Bentley for the visit to Mimi's. Driving into the land of the long white cloud, with homemade jar of jam sitting in my lap, we started driving down this long winding dirt track which seemed to never end until Thorne the gardener, asked me to look out for the properties name, "Moon Beam". Eventually we found it and I thought to myself that this cannot be the right property as it had a rather dilapidated front gate and huge sign in fluorescent pink, "Moon Beam Manor" surrounded by wild gum trees. A bone rattling ride up the pot holed driveway, we arrived at what can one say? The house.

"Mr Blanding's builds his dream house" it was not. More like the house in "Green Acres" which was Thorne, the gardeners, thought.

Suddenly, a huge fluffy head popped itself at my passenger window thinking Mimi had let herself go. Instead it was a Llama. Ooops! As we alighted from the car my main concern was ruining my Peter Sheppard shoes which I had barely broken in. That and an obstacle course of Llama droppings everywhere we walked to what I was guessing was the front door surrounded by dream catchers and wind chimes in every possible colour and fashion known to man. A rather hesitant knock on the door and upon it opening, there stood before me was a person I hardly recognised except for the voice saying, "Saph darling". Wild red hair, which was clearly dyed and an oversized multi coloured poncho, floral leggings and matching wellies. "Mimi", I enquired with a bright yet worried smile. "Yes, it's me Saph, the new me. I've tree changed".

Changed is the word and not in a Florence Broadhurst way. More like Alice B Toklas and not a thing matching. I was wondering what happened to her twin set and pearls attire. With a welcomed smile from her we entered the room of many crocheted patterns and macramé adorning her walls. Amongst this room of many colours was a much younger man who looked vaguely familiar. Yes, Mike the gardener, from the Toorak property. Suddenly, light bulb moment. My next thought and question to Mimi was how Rupert was, her husband to which she replied he had passed away several years ago in a skiing accident in Switzerland. Took a wrong turn off the sloop!

As a result of all of this, she decided to go back to mother nature in more ways than one could imagine. We commenced our afternoon tea which consisted of liquorice infused root balm tea which I subtly poured into the fern beside me. After this we soldiered on with the house tour and the grounds. The veggie plot was



Quote of the month:

***What is a weed? A weed is a plant
whose virtues have not yet been
discovered.***

Ralph Waldo Emerson

Proudly supporting Bridge Connection



Cellar doors excluded from business support

Wineries with cellar doors have been excluded from the third round of business assistance announced by the Andrews Labor Government.

The program, which promises support to hospitality and retailers, does not include wineries whose business relies heavily on cellar door sales.

Member for Euroa and deputy leader of The Nationals Steph Ryan has called on the Andrews Government to review the list of eligible businesses as a matter of urgency.

"Most wineries with cellar doors are family-run small businesses which have struggled through drought, fires and now government-imposed restrictions," Ms Ryan said.

"The restrictions implemented as a consequence of the Andrews Government's bungled hotel quarantine and its insufficient contact tracing caused tourism to fall off a cliff and forced these businesses to again close their doors, just as they were opening back up.

"It is particularly cruel that they now find out that the government has excluded them from accessing support."

Ms Ryan has been contacted by a number of family wineries in the Euroa electorate who have been unable to access support beyond round one of the Business Support Fund grants.

Madeline Marson of Heathcote-based winery Vinea Marson said: "It is incongruous that wine businesses are not eligible in this round of support".

"Many wine businesses operate like ours, from vine to glass, from primary production in the vineyard to the tasting and sales table at the cellar door.

"It appears that this hybrid and entirely legitimate business model has not been encapsulated by Business Victoria's current list.

"We depend on retail in the form of our cellar door as well as trade with restaurants and retail which have been closed or significantly impacted in the second lockdown."

Ms Marson estimates her cellar door business income has reduced by around 70 per cent this year.

"Grants under the Business Support Fund Round 3 would provide a vital injection of funds into small businesses struggling to remain afloat at this time," Ms Ryan said.

"Regional businesses have proven resilient in the face of adversity, but the Andrews Government keeps putting roadblocks in front of them at a time when they can least afford it."

Media contact: Felicity Hartridge – 0402 498 915 or felicity.hartridge@parliament.vic.gov.au



Federal Member for Bendigo

LISA CHESTERS MP

PO Box 338 Bendigo 3552
Cnr Williamson & Myers Sts, Bendigo 3550

T: 034 5443 9055 • F 03 5443 9736

E: Lisa.Chesters.MP@aph.gov.au

@LMChesters • /LisaChestersBendigo



Workforce increase puts the Christmas ham back on the menu

There will be enough hands on deck to meet growing demand for high-quality Victorian produce following a successful campaign to increase workforce capacity at meat processors.

The industry, supported by the Liberal Nationals, had raised fears in recent weeks that workforce limits at Victorian abattoirs would hamper ability to meet rising consumer demand in spring peak season and at Christmas.

From today regional Victorian abattoirs will increase their workforce to 90 per cent, while Melbourne-based meat and seafood processors will be allowed to operate at up to 80 per cent.

Shadow Minister for Agriculture Peter Walsh said the change was long overdue.

"Victorians have been forced to give up a lot this year – the Christmas ham is one treat we can now look forward to enjoying," Mr Walsh said.

"It's about time – industry has been clear that without an increase to workforce limits it will struggle to meet growing demand in spring peak season and in the lead up to Christmas.

"After months staying apart to protect vulnerable people in our community, we're all looking forward to the possibility of a COVID normal Christmas.

"It's taken a strong push from industry and the Liberal Nationals for the Andrews Labor Government to finally listen, but it's little comfort to the thousands of Victorians who have spent many more weeks out of work.

"It's unnecessary delays like this that have led Victorians to lose confidence in Daniel Andrews and his Labor Government."

Rob Chapman

Bendigo Council candidate for Eppalock Ward

From Rob Chapman Bendigo Council candidate for Eppalock Ward

Well dear folk of Redesdale and Mia Mia I decided to nominate for Bendigo Council in Eppalock ward as Council seems to be far less accessible as I remember it to be. The events of recent years have made me decide that I must act, though not to be a spoiler but a constructor of benefit, as that is the only thing satisfies me. This area has so much to offer and potential galore. The COVID 19 epidemic will certainly be a game changer, how this will effect Council operations and project funding is difficult to predict. It may force Council operations to be more focused on the delivery of core services. I do believe it needs to get back to basics of what people expect from it, but Council should encourage private enterprise investment to take the initiative and enable activity rather than bog it down.

I have a list of things that might be achievable, and maybe you have too. Should I be elected to be an Eppalock ward councillor at CoGB Council, I would like for those interested to make your wish list known, and let us see what is achievable and has a favourable benefit to cost ratio that isn't high in maintenance, that is always a good start.

The COVID 19 epidemic has impacted really badly upon the retail businesses in Bendigo CBD add to this a declining business precinct and the out look isn't great. Being involved with Gem and Mineral Clubs like the in one Bendigo, which do quite a bit of work in precious metals, I always wondered why Bendigo did not take advantage of it's Gold heritage to become a centre for excellence in Gold and Silversmithing or even have a gold bullion market like those in Hong Kong. Bendigo I believe had it's own Mint once during it's heyday, the Perth Mint recently produced a Gold coin and a Silver coin with gold embellishment that I believe were selling fast. The production of gold bullion and or coins from a Bendigo Mint if re established could have the same potential to generate interest from people seeking a monetary hedge. From an economic point of view, that may help to stimulate a new type of tourism, local & international investor tourism hopefully with beneficial spin offs for the Bendigo CBD.

When Councillor Bill Chisholm from the Shire of Mitchell was helping the Stinson Memorial Committee that I was part of, I mentioned to him about the poor condition of the Burke & Wills Track, and what could be done about it. I suggested that designating this road for bicycle tourism as it had few traffic movements and plenty of width in the verges might attract adequate funding. That doesn't mean excluding vehicular traffic by the way. Looking at the Burke & Wills Track it is really part of the Three chain road stock route which goes down to Sunbury and beyond. To the North it could link up to Mia Mia Derrinal road via Westblade road and onto the O'Keefe rail trail This would give Cyclists a picturesque north south route with light traffic. As for Cr Bill Chisholm he said that another route was being considered for that exact purpose, but it was further east, though the possibility still exists.

Well that is two ideas that might be worth a go and help the fortunes of our region, I would like to hear your ideas too, and

your opinions of where we are going.

I mentioned maintenance earlier in the text, I have noticed that councils in general do not like to pay for upkeep costs of assets yet will spend large amounts of capital usually because it is propped up by state or federal funding schemes, but that was before COVID 19.

I personally like to see Council advocate for more regional aged care facilities, and see if the funding model could be revised to better care for these vulnerable persons. I visited friend and neighbour Brian Howard in St John of God Hospital. I learnt that he could not return back home as care was not available, and there were no vacancies at the R.M. Begg facility not many days later Brian died this issue really came home to me.

As a Fire brigade member I believe in pre fire season fuel reduction measures to reduce the intensity of grass & scrub fires and give us fireies the opportunity to get our skills up speed. It is a rare event these days to carry out road side controlled burns to aid in these measures. Hopefully our Indiginous fire fighters will be in the fore front of changing the attitudes of Councils and Government departments alike, but in the meanwhile I will continue to advocate for these activities.

Please consider me for Eppalock ward yours truly

Rob Chapman

Phone 5425 3258

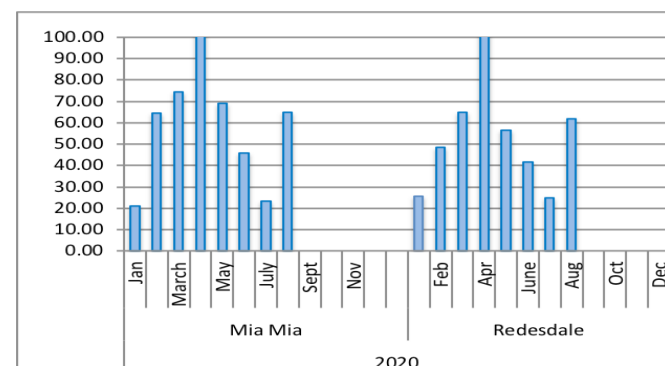
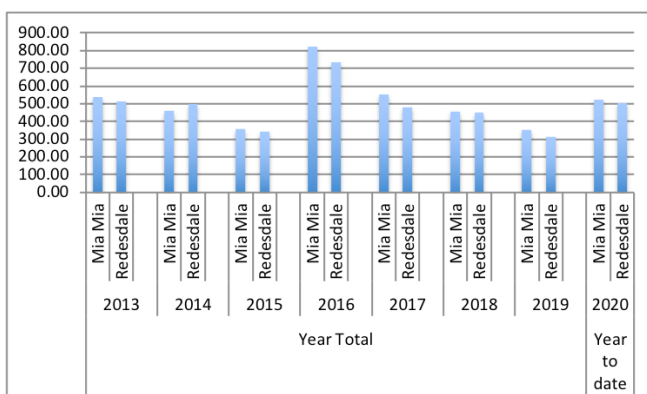
Vote (1)
Robin Chapman
Eppalock Ward
Bendigo





The average yearly rainfall for **Redesdale** is about 601mms.

Thank you to **Helen Bennett** for the **Mia Mia** readings.



August Rain Fall

Redesdale 61.75mm Year to date 502.85mm

Mia Mia 64.8mm Year to date 525.50mm

Year totals for Previous years

2013	Mia Mia	538.00
	Redesdale	514.90
2014	Mia Mia	458.00
	Redesdale	497.00
2015	Mia Mia	358.00
	Redesdale	343.40
2016	Mia Mia	826.00
	Redesdale	735.40
2017	Mia Mia	551.75
	Redesdale	479.60
2018	Mia Mia	455.00
	Redesdale	448.40
2019	Mia Mia	352.00
	Redesdale	315.00

Party Equipment for hire

The following party equipment is available for hire from the Redesdale Recreational Reserve Committee (RRRC)

Commercial sized steel roaster	\$120 per weekend
Large marquee 3m x 6m	\$225 per weekend
Collapsible marquee 3m x 3m	\$80 per weekend
Tables - 1.8m x 1m	\$8 each per weekend
Table cloths, white	\$10 each
Chairs, white plastic	\$2.50 each
Umbrellas, charcoal	\$5 each

A bond will be required on most hires.
Proceeds go to the RRRC
For more information or to make a booking call:

Ronn Taylor

0429336763



Turn your house
into a home
with Tucks
locally made products



- Aluminium and Timber Windows
- Window Replacements • Security Doors
- Shower Screens • Wardrobe Doors

We are in your area regularly and offer a **FREE** measure and quote service.

We can offer supply and install prices.



Celebrating 43 Years providing top quality products and professional friendly service.

P: 03 5446 8855 E: quotes@tuckswindows.com.au

www.tuckswindows.com.au

RECIPE OF THE MONTH

52

Honey Yoghurt Cheesecake



1 pkt Marie biscuits
60g butter, melted
500g Greek-style yoghurt
2tblsp thyme leaves
500g Philly cream cheese (at room temperature)
40g icing sugar, sifted
150g white chocolate
60g honey
Finely grated zest of 1 lemon

Use a 23cm spring -Form tin lined with baking paper
Line a sieve with a clean tea towel and set above a bowl,

Spoon in the yoghurt, draw up the sides of the towel, squeeze into a ball, and press out as much liquid as you can.

Crush the biscuits finely and mix with the butter and half of the thyme leaves.
Press into the tin to form an even layer, then place in fridge.

Next melt the chocolate. This can be done in a bowl over a pan of simmering water.
Stir till melted being careful not to let any moisture into the bowl.

Spoon the melted chocolate into the cheese mixture and whisk till combined.
Spread the cream cheese mixture over the biscuit base evenly, then refrigerate for at least 2 hours.

When ready to serve warm the honey with the remaining thyme leaves, till it is runny and thin.
Remove from heat and drizzle over the cheesecake.
Release the cheesecake from the tin and serve.
Delicious!

Marisa Leahy

creative designs for your business

logos menus flyers posters
invitations brochures magazines
business cards advertisements
letterheads with compliment slips
full business imaging

lyn ingles | graphic designer
blupen@bigpond.com
0429 911 980

Proudly Sponsoring
assistance to the 'Bridge Connection'



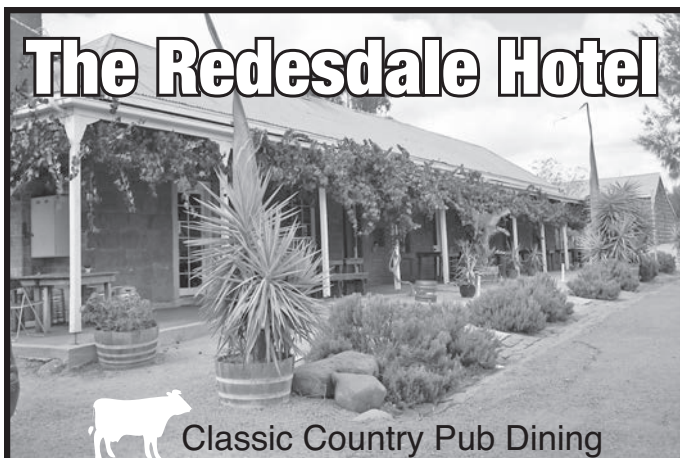
DEFIBRILLATOR

The Community owned defibrillator
is now accessible to all
community members.

It is situated on the outside wall of the CFA building
(next to the Rural Café).



The Redesdale Hotel



Classic Country Pub Dining

**For bookings
please call (03) 4405 0601**

Monday - Closed

Tuesday - Closed

Wed to Sun • Lunch 12noon - 2.30pm

• Dinner 6pm - 8.30pm

The Redesdale Hotel
2640 Heathcote-kyneton Road
Redesdale, Vic, 3444



The Redesdale Hotel

info@theredesdalehotel.com.au

redesdalehotel



www.theredesdalehotel.com.au

Great to see The Bridge Connection back and perfect timing too , as far as fire prevention goes.

That effort you put into fuel reduction and getting your fire plan ready right now can make for a lot less stressful fire season.

At the risk of sounding like a broken record, I just wanted to revisit three important fire prevention tasks that need to be carried out right now.

1. Slashing/ mowing

Completely safe to do now but as soon as the grass dries out ,put the Victa away. By far the biggest reason for us having to turn out is a mower fire (usually in early December and at 3 o'clock in the afternoon).

2. Spraying

A spray of Roundup right now around buildings and fence lines will leave a fire safe barrier in summer ,not to mention save you hours of labour . I understand that there are those who are dubious about using chemicals. Roundup ,or Glyphosate , has long been regarded as the safest of the herbicides but if you have concerns please contact me or at least follow the safety directions on the package.

3. Gas Bottles

Now is the time to do the soapy water test on your outdoor bbq, patio heater etc. Even better, if you're in a hardware store , pick up some replacement rubber seals. These are inexpensive and easy to fit, giving you peace of mind. As I mentioned earlier , it's time to start getting a fire plan ready. I am hoping that we can help you out with a community engagement meeting of some description. With restrictions easing this may still happen. Meanwhile don't hesitate to contact me or any other brigade member if you have any questions.

Regards Andrew Campbell.
Fire Prevention Officer
0428253104

I'm hoping that you may be able to assist me with a problem that I have run into down at the brigade.

I have attempted to show the history of the brigade for everyone so that it's not lost for good.

I'm chasing the photos of the original captains of the brigade to complete the task I have set myself.

I have to admit that it has been a lot harder than I thought it would be.

What im hoping you can assist with is asking your readers of the Bridge Connection newspaper if they had a picture of the following captains of the brigade, I'm led to believe that they were all local people so hopefully someone may have a photo. The people I'm looking for are the following and the dates they were Captain.

J.Latter 1927 – 31

H.Babbage 1931 – 40

R.Knight 1940 – 46

J.Cullen 1946 – 49

G.O'Sullivan 1949 – 60

I'm hoping you can assist, if you require any further information please feel free to contact me.

Calvin Millard

Mia Mia Captain

PH. 0409 979 037

Email: calvin.millard@bigpond.com



**5th
On
Property
Ram Sale**
**Wednesday
14th October
2020**
Inspection: 10.30am
Helmsman Sale 12.30pm
ALAN HARRIS
0417 058 780



**KOOLE VALE
MERINOS**
www.koolevale.com.au



48 MERINO & POLL MERINO RAMS

24 WHITE SUFFOLK RAMS

28 PARFREY ROAD, COSTERFIELD




SELLING AGENTS
Adam Millard 0400 499 064

3% REBATE TO OUTSIDE AGENTS

JEW'S HARP

POLL DORSET STUD

Annual On Property RAM SALE

INSPECTION
Friday 16 October 1-5pm

SALE DAY
Tuesday 20 October-1pm

120 POLL DORSET RAMS
HIGH INDEX LAMBPLAN FIGURES

10 WHITE SUFFOLK RAMS
Michael & Bernadette O'Sullivan
183 Mission Hill Road Baynton 3444
P: (03) 5423 7231 M: 0438 856 416
www.jewsharppolldorsets.com.au


BAYNTON

BORDER LEICESTER STUD

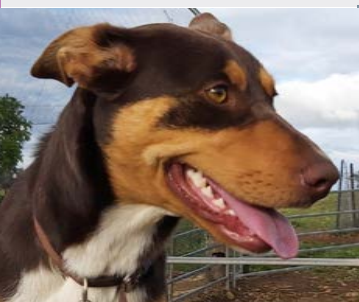
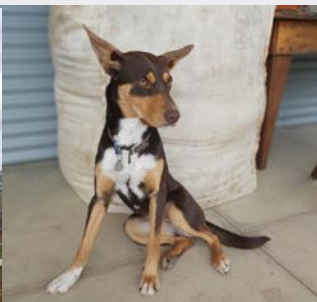
40 BORDER LEICESTER RAMS
Martin O'Sullivan 0429 524 057
Accredited Brucellosis Free, OJD Vaccinated.
Striving for consistent industry performing rams




**KYNETON
VETERINARY
HOSPITAL**



Send us a picture of your very special pet and a few words to describe him or her and why you love your pet so much.
Send to: bridgeconnection.editor@gmail.com
A prize at the end of the year will be awarded for the best entry.

Rusty, a one year old Kelpie

This is Rusty, a one year old Kelpie who loves people, sheep and anything that moves.
She has plenty of energy and mischief and likes to participate in all activities (sometimes helpfully).
Trina Douglas

KYNETON VETERINARY HOSPITAL
Call us today 5422 1099
'Where animal lovers heal'



EILAN DONAN MERINO
Est 1925

ANNUAL ON PROPERTY RAM SALE
October 15th at 1PM

INTERFACED WITH  AuctionsPlus

Inspections from September 15th by arrangement
contact Jock MacRae 0438 511 931
jock@eilandonan.com.au | 230 Metcalfe Road, Elphinstone VIC

CHARLIE CARP

ALL PURPOSE FERTILISER



**'The perfect liquid fertiliser...
producing bumper crops &
cleaner rivers'**

European Carp are the 'rabbits' of the rivers, in many waterways they make up to 90% of the biomass making it a struggle for our native fish to survive.

The smart people at Charlie Carp are turning these pests into a positive. They take the Carp out of the rivers and turn them into the perfect liquid fertiliser.

Just like fish oil is good for us, Charlie Carp is full of the essential trace elements that promote healthy root growth and a strong immune system. Fast acting and so easy to apply through watering systems.

Charlie Carp is the perfect liquid fertiliser - producing bumper crops AND cleaner rivers...now that's a bonus.

Available at Bunnings, Mitre 10 and all good gardening stores, or call our factory direct for 200 and 1000 litre shuttles, delivered to your door.

Jason Hodges
Professional Landscaper & TV Presenter



For the full Charlie Carp story and product information visit us at www.charliecarp.com

Palmer Stevens & Rennick

Barristers & Solicitors

Founded 1852



Palmer Stevens & Rennick

provide advice to clients all over Australia.

- Powers of Attorney
- Wills and Estates
- Criminal Law
- Conveyancing
- Property Law
- Family Law
- Agribusiness Law
- Commercial Litigation
- Traffic Law and Toll Fines
- Appearing in Castlemaine Court
- Pre purchase advice for large Agribusiness Assets
- Compensation for Government Acquisitions



Mr Joseph Palmer
Founder of
Palmer Stevens & Rennick

8 Jennings Street, Kyneton

or P.O. Box 1, Kyneton Vic 3444

Phone: (03) 5422 6500 Fax: (03) 5422 3385

Email: psr@psr.net.au

OPTOMETRIST NOW OPEN IN HEATHCOTE

Open for appointments
TUESDAYS & FRIDAYS
Great frame range
complete glasses from \$99



59 High Street Heathcote

For appointments
please phone 4411 6802

**THE OPTOMETRIST
HEATHCOTE**

A good life
deserves the
best farewell

**WILLIAM
FARMER**
FUNERAL DIRECTORS

Andrew and Heather Hampton

151 McCrae Street Bendigo
12 Victoria Street Eaglehawk

P: 5441 5577

www.williamfarmer.com.au

A tradition that continues...