

ISSUE NO. 122 July 2021

FREE

For the Mia Mia- Redesdale Region including:

- Heathcote • Derrinal • Glenhope • Baynton • Sidonia • Barfold
- Langley • Sutton Grange • Elphinstone • Kyneton • Metcalfe

BRIDGE CONNECTION COMMUNITY NEWSPAPER



facebook.com/RedesdaleMiaMia

Redesdale's 3rd Community 'Clean Up Day'

GRAPHICS COURTESY/lyn ingles /blue pencil publishing



Do your bit...

PLEASE! BIN YOUR RUBBISH

Let's keep our town tidy.

L-R: Kathy Hall, Pan Prendergast, Lin Newton, Ruth Booker, Lindsay Booker, Robyn Abramowski, Rod Gibson, Jo Sargent Smith.
Not pictured: Craig Newton, David Cheal, Chris Simpson, Emma Simpson, Poppy Simpson.

It gives me great joy to drive through our beautiful little town and NOT see one piece of litter.

That doesn't happen very often, but it did happen today (Monday 21st June) because 13 community members decided to join in and pick up rubbish left behind by others. I must admit I was somewhat disappointed that there were only 13 of us. Out of a community of 300+, I had hoped for a better outcome. After all, we all benefit from it.

Thank you to the people who came and conquered. The town looks better because of you, and I know you all take pride in where you live.

The cigarette butts found outside the toilet area and

entrance to the hall have clearly been there a long time, embedded into the gravel. The aluminium cans, glass bottles and fast-food wrappers that have been thrown out of car windows, caught on the side of the road. *These things will NEVER break down so if they are not picked up, there they will stay.*

If you were unable to participate on this day. Please pick up the next bit of rubbish you see on the side of the road. **Do your bit. Let's keep our town tidy.**

A special thanks goes to Lin and Craig Newton for taking the trailer to the tip.

Not pictured:

David Cheal, Chris, Emma and Poppy Simpson.

We're open 9am-5pm Monday to Friday or call us on
(03) 5433 3115 to speak to a friendly staff member.

heathcotenagambie.community

Community Bank
Heathcote & District

B Bendigo Bank



GRAPHICS COURTESY / lyn ingles / blue pencil publishing

Collaboration of a small rural community

When asked by a Melbourne friend last Sunday to describe our olive picking this year, my reply was, "Our olives are a mix of small and large, Green and Black, handpicked with kindness from a small group of people from Redesdale, kyneton, Mia Mia, and Sutton Grange.

We are very grateful for the help from our friends and neighbours over the Queens Birthday Weekend, as our usual Melbourne folk were unable to get here due to the Covid-19 restrictions.

It's been 3 years since our last decent crop and this year has made up for it with plenty of olives to pick. Even the Sulphur-crested cockatoo left us plenty in their constant efforts to destroy the trees.

We have also been introduced to an olive harvester picking machine on a pole by our very knowledgeable neighbours, who have a large olive grove and also produce beautiful local olive oil. It proved to be a godsend in production time, as in the past it was only handpicking and tree raking.

It is an education in what to do production wise each harvest as it was all very new to us 6 years ago.

We would like to acknowledge Barfold Olives for their assistance with our oil production process and all the tips they freely offer. We are blessed to have such a professional Olive oil producer so close to us.

Olives are very high in Vitamin E and other powerful antioxidants. Studies show they are good for the heart and may protect against osteoporosis and other diseases.

We know they can bring a small group of people together for some chatter, laughs and of course great collaboration.

Gary and Pan Prendergast



Editorial

Dear Readers this month after another Covid lockdown and restrictions to community events the Kitchen opening was postponed again stay tuned for new opening details.

if you have a story or an event to contribute send to the below email.

bridgeconnection.editor@gmail.com

Regina Bennett.



Regina Bennett

Editor: Regina Bennett

Ph: 0437514223

e: bridgeconnection.editor@gmail.com

BRIDGE CONNECTION COMMUNITY NEWSPAPER

Advertising Rates/Sizes

Size	Height x Width	Price per issue	10 Editions
Business Card	55mm x 90mm	\$25	\$250
Quarter Page	130mm x 90mm	\$50	\$500
Half Page	130mm x 190mm	\$95	\$950
Full Page	270mm x 190mm	\$175	\$1,750

Colour Advertisements plus 20%.

Please send editorial or advertising copy to:
bridgeconnection.editor@gmail.com
or by post to **Regina Bennett 3465 Burke & Wills track Mia Mia 3444.**
For other editorial enquiries, please phone **0437 514 223**

Bridge Connection Distribution

950 Copies printed and distributed to Redesdale Mia Mia Region, including Barfold, Baynton, Derrinal, Elphinstone, Glenhope, Kyneton, Langley, Metcalf, Sidonia and Sutton Grange

Disclaimer: The Bridge Connection Inc. Committee wishes to advise that the views or remarks expressed in this publication are not necessarily the views of the volunteer Bridge Connection Inc. editorial or production team and no service or endorsement is implied by the listing of Advertisers, sponsors or contributors. Although every effort is taken in reproducing and printing advertisements correctly, we take no responsibility for errors.

Management Committee

President : Gloria Pocock

Secretary: Regina Bennett (03) 5425 5402
bridgeconnection.secretary@gmail.com

Treasurer: Marissa Leahy 0415384217

Magazine: Regina Bennett - Editor 0437 514 223

Bridge Connection

- Mission Statement -

The mission of **Bridge Connection** is to bring people together by:

1. Providing information about local issues, goals and events, and to celebrate local achievements,
 2. Encouraging economic growth in the area
 3. Fostering geographic identity, and
 4. Providing a platform for public debate
- Bridge Connection is published by local people who volunteer, for local people as a **free paper** and on line at **redesdale.net** and via **face-book**



[facebook.comRedesdaleMiaMia](https://facebook.com/RedesdaleMiaMia)



General Store Liquor Store



**Fully Electronic
Postage Service**

**Come in for some
great tasting...**



**Newspapers
& Groceries**

**Banking
Facilities**



**Full alcohol
licence and
bottle shop
with local
wines.**



**Takeaway
Food Service**



**Fuel
& Oil**



Hours:

**Monday to Friday 7am to 9pm
Saturday & Sunday 8am to 9pm**

RJ REDESDALE

**Phone (03) 5425 3154
2609 Main Road, Redesdale**

Acting Principal: Andrew King

Phone: 5425 3155

Email: redesdale.mia.mia.ps.ps@education.vic.gov.au

Redesdale Mia Mia Primary School



School News

Respect, Resilience & Relationships



Over the past month, there has been a lot of interesting things occur here at RMMPS. Firstly, the mini lockdown was part of school and we adapted really well as a school community. Students accessed their laptops regularly and we meet online throughout the days, having lots of great learning as well as fun conversations. We learned a lot about our pets and the fascination we all seem to have with Lego. Unfortunately, our excursion to Bacchus Marsh was cancelled because of this. In Indonesian, Pak Mick brought in traditional clothing and the students dressed up and performed an Indonesian rap, showcasing their

Reconciliation Week

We recognised Reconciliation Week through a variety of activities, readings and discussions. It was sensational to see the students reflect on their learnings and understandings across the week. We were able to discuss the significance of the week and what it means and represents.



Please contact the school for 2022 enrolment information to be a part of our wonderful school.

REDESDALE CFA

The latest safety warning from the CFA was prompted after a couple of near misses by a trailer and also a caravan becoming uncoupled. After careering off busy outer metropolitan roads they, thankfully, landed safely on the road side. Both were never locked on to the tow ball in the first place, hence the warning.

With the covid environment that we live in, our world has become smaller and caravanning has experienced a jump in popularity. With so many more boats and trailers on the road too it is important to follow a few important steps.

Have both safety chains attached.

Have them crossed over.

Use safety rated (yellow) shackles.

And never place the trailer in locked open position. The chances of not properly securing the trailer are greatly increased if you do this. (see photo)

Enjoy your safe travels.

Andrew Campbell.



Proudly printed in Kyneton

Castlemaine, Kyneton & Gisborne

CopyCentre
Printing together for our community

Design & Pre-press
Plan Scanning, Finishing Services.

*Not just a Copy Centre...
we are so much more.*



www.windarring.org.au

58 Mollison Street
Kyneton
03 5422 2400

Elphinstone Post Office & General Store

*'In the heart of the
Elphinstone community'*



- Newspapers/ Magazines
- Origin Gas Bottles
- Bread • Milk & Groceries
- Postage Services

*'The General Store where
community meets business.'*

Gill & Dave (03) 5473 3200
9 Bateman Street, Elphinstone

You are warmly invited to

BARFOLD

COMMUNITY CHURCH

Meets 10.00 am

2nd – 5th Sundays each month

followed by morning tea

at Barfold Union Church

Heathcote-Kyneton Rd, Barfold

Contact; Leigh 0425812786



UNITING CHURCH

10am Start

Morning Tea is shared before each service at 9.45



Due to the Coronavirus (COVID-19)
Please see below website for Changes to services

www.macedonrangesunitingchurch.org.au

For more information go to -

www.macedonrangesunitingchurch.org.au

CATHOLIC CHURCH

Redesdale 2nd Sunday of each month 11am

COMMUNITY DEFIBRILLATOR

located on the side of the Redesdale fire station
Access code is 3444 (Redesdale post code)

DEFIBRILLATOR

The Community owned defibrillator
is now accessible to all
community members.

It is situated on the outside wall of the CFA building
(next to Café Budburst).



creative
designs
for your
business

logos menus flyers posters
invitations brochures magazines
business cards advertisements
letterheads with compliment slips
full business imaging

lyn ingles | graphic designer
blupen@bigpond.com
0429 911 980

Proudly Sponsoring
assistance to the 'Bridge Connection'



Turn your house
into a home
with Tucks
locally made products



- Aluminium and Timber Windows
- Window Replacements • Security Doors
- Shower Screens • Wardrobe Doors

We are in your area regularly
and offer a **FREE** measure
and quote service.

We can offer supply and install prices.



**Tucks
Windows
BENDIGO**

Celebrating 43 Years
providing top quality
products and
professional
friendly service.

P: 03 5446 8855 E: quotes@tuckswindows.com.au

www.tuckswindows.com.au



Campaspe Valley Landcare
Proudly supported by the Victorian Government's Landcare Grants Program

Campaspe Valley Landcare Group Report

At the June meeting of the Campaspe Valley Landcare Group on 19th of this month the members there present passed and adopted an Operations Policy concerning our activities to ensure that members carrying out CVLG works are conducted in an authorized and safe manner.

A report was presented on recent native revegetation plantings on the road verge in Took's Rd which had been prepared by works carried out by Phil Don over some months.

Tuan or Brush Tailed Phascogale nest boxes are still available to order from CVLG and GUESS WHAT they are FREE, yes we have 30 boxes to make and they are free to land holders in the Redesdale, Mia Mia, Barfold, Emberton, Lyall Langley general area. Our Minute Secretary Peter Furze enlightened our meeting with the news that the grant our group received for the nest boxes was for production and distribution of the nest boxes. We sincerely hope people who care about our native animals will take up this generous offer, as commercially these boxes sell for \$80 each. The only provisions we ask is that the recipient has access to at least 2 hectares of forest, and are monitored regularly for activity, so that Tuan numbers can be assessed. Please Contact Rob Chapman on 5425 3258 to place an order. Refunds may be available on previous purchased nest boxes.

Recently CVLG applied for a federal volunteer organizations grant through Lisa Chesters Office for a 1.8m Tractor powered Flail mower costing about \$5000 to address the road side management of Phalaris grass which is a well known fire hazard in summer, but were unsuccessful, which is very disappointing as Phil Don has worn out several machines at his own expense keeping roadside Phalaris under control. A \$300 donation was passed at the meeting to assist the Stone Reserve project, and Graham Connell volunteered his skills in site mapping to David Cheal and Barbara James both members on the Stone Reserve project.
Rob Chapman CVLG President

Footnote After the recent wind storm many trees were lost, this time of year is a good time to plant wind breaks of natives species such as Red Gum, Grey Box, Yellow Box, Black woods. Land care groups are here to assist in these works and are willing to help. Wind breaks help to sap the energy of winds and shelter stock apart from absorbing Co2 from the atmosphere.

Elphinstone

Post Office & General Store

*'In the heart of the
Elphinstone community'*



- Newspapers/ Magazines
- Origin Gas Bottles
- Bread • Milk & Groceries
- Postage Services

*'The General Store where
community meets business.'*

Gill & Dave (03) 5473 3200
9 Bateman Street, Elphinstone

Proudly printed in Kyneton

Castlemaine, Kyneton & Gisborne
CopyCentre
Printing together for our community

Design & Pre-press
Plan Scanning, Finishing Services.

*Not just a Copy Centre...
we are so much more.*



www.windarring.org.au

58 Mollison Street
Kyneton
03 5422 2400



Eulogy Brian Kendall Ward

April 17, 1930 – June 15, 2021

Brian was born at Randwick in Sydney on April 17, 1930, the second child and second son of Frank and Violet Ward. The family moved to Petersham and he spent his growing up years there.

His earliest memory, at 4, was of sitting with his brother David on the steps of the house there and watching his parents go off to the funeral of his baby sister who died aged 6 months of rheumatic fever. We forget what different times they were. His father was a printer, Head of Chapel at the Sydney Daily Telegraph, known personally to the ferocious Frank Packer and an occasional columnist as a reporter of sailing and rowing. All the kids grew up with the routine injunctions of living with a shift worker ... no noise in the house while father was sleeping! Brian went to Petersham Primary as did David and subsequent Wards – Heather, Russell, and Coral – where they refused to teach him to write as he was left-handed and then to Ashfield Secondary Technical School, a school which was still pretty rough when I taught there 40 years later, and which he left the day after he turned 15. That pretty much tells you all you need to know about his formal education – though dad still met one of his teachers from Ashfield for the occasional beer for many years after.

Dad had his first job at 9 working for a local grocer cutting blocks of butter into somewhat less than half pound blocks and packing sugar into somewhat less than half pound packets as well as delivering the grocery orders, later, at 12, he delivered medicines by bike for a local pharmacist. Dad like most boys his age enjoyed the war – spotting planes, fund raising by saving aluminium and putting on shows etc – and trained in the Navy League. He enjoyed sports and was sailing on Sydney Harbour in the family boat and later competitive 18 footers and rowing, from the age of 15, at Leichhardt Rowing Club which activities continued while he served his first apprenticeship as a fitter and turner. (His brother David as the eldest got to be a printer, Dad was to be a fitter ... father's word was law!)

When Dad was 18 his father moved the family back to Tasmania. David and dad remained in Sydney, dad boarding with the family of one of his friends. Rowing was taking up more and more time. When they were not training or competing, they were raising funds to keep the club going. The fund-raising balls and parties also constituted their social life. Dad was elected the youngest ever captain in May 1950. Having completed the fitting and turning he started a job at the Royal Aero Club at Bankstown which he left to work for McConnell Building Co. where he added welding to his talents. By this time, he had met mum at the rowing club – he was coaching her and her friend in the women's pair – and they got engaged in May 1951 and married in November. Dad was in serious training at this time – his eight was amongst the first guinea pigs of Professor Cotton of Sydney University and his scientific training methods. His eight was selected for the Olympic Games in Helsinki but had to go without dad in the bow seat as he came down with an injury. They took the bronze behind the US (never beaten in the 8 to

that point) and the USSR. Might it have been different if dad had got to go? Probably not! And that was pretty much the end of his competitive rowing career – they were all proper amateurs then of course, though it remained a lifelong love. At this time, he was working on the Australian American War Memorial – familiar to all visitors to our capital as the Ball and Eagle or the chicken on a stick. The monument was built mostly in a factory in Sydney and transported in carefully measured bits to Canberra for final installation. Dad and the other welder involved actually had to invent new methods to weld curves among other innovations while living in freezing Nissen huts (later in civic block housing) in barren and windswept early Canberra. It was a bittersweet pleasure to take him to Canberra in July 2018 to make a final visit to it and give his oral history to the National Archives.

While dad was enjoying the high life in Canberra they were still living (with infant me) with Mum's parents, but by February 1954 they were able to buy their first house in Wharf Rd Ryde for 2995 pounds. This was a major step up – neither of their parents had owned a house at that point – but dad had plans. He took up a position as a commercial traveller with Kennard Bros – distributors of household sundries and his territory was everything west of the Blue Mountains. Dad excelled at selling – he was born for it. He lived by the rule that salesmanship starts when the customer says no. I am sure that many of us here have heard the many stories of early commercial travelling – all done by train! And entailing the worker being away for the week staying in dodgy hotels in flea-bitten outback towns selling crockery and plasticware to unwilling rural storekeepers – all of whom seem to have been extraordinary characters.

Dad eventually got one of the first Mercedes available in Australia – which proved unable to cope with western NSW dirt roads and just gave up. By the time he was working for Kia Ora (baked beans! Tomato sauce! Tinned soup! Flummery!) he had one of the first Vee Dubs – unbreakable, as his stories of two broken windscreens in a morning (that took some explaining to people who didn't drive on outback roads) or floating down flooded irrigation ditches in the Riverina etc etc will attest. Cars remained a lifelong interest – leading to car rallies and restoring T model Ford trucks and MGs etc etc. Much of this involved scrounging on tips – another favourite activity ... quote "pick that up, Susan, we could make something out of that". Working for Kia Ora entailed a move to Wagga in 1956 so dad was in the centre of his territory. Keeping chickens and ducks in the backyard there might be said to be the start of his rural interests. Mum and dad moved back to Sydney in November 1959 as they purchased a mixed business in Gladesville. This turned out not to have been a progressive decision, despite hard work all round, given the credit squeeze and the growth of supermarkets and they sold it in October 1960. Dad started a selling job with Ansell Rubber (rubber gloves! Goggles! Condoms!) and we all moved to the northern beaches of Sydney – not nearly so glamorous and pricey then before the water and sewerage were put on – renting first at Mona Vale and then buying at Bilgola Plateau. During this time dad, with friends and partners, was developing an innovative if

not very cashed up business of their own that would become Upward Publishing Co which would produce business diaries of all kinds but especially the totally new and untried idea of a school diary and later a loose-leaf note taking system for schools.

Lynda and I left home within a month of each other to go to uni and to start nursing so mum and dad were on their own again and in 1973 Dad and his partner decided to establish a base in Melbourne for Upward so mum and dad moved – first to Vermont South and Bayswater North and then a bush block at Greendale where they lived in a caravan for a few months with a mob of kangaroos before they bought the farm at Mia Mia that would become their home for the next couple of decades.

The first publishing business had been sold and the idea of the farm was semi-retirement but the stocking of the farm with black and coloured sheep meant new things to learn and more work. As usual dad went in boots and all becoming president of the Black and Coloured Sheep Breeders Association and developing a business, Naturwool, to produce top quality natural coloured wool for knitting. The long drought proved costly, as it did for all primary producers, so dad started another publishing business, Phoenix Publishing, also marketing school diaries working from the ever-expanding shed and later accepting a position as Sales Manager with Debden Diaries which entailed commuting from Mia Mia to Melbourne every day - good thinking time he said!

Living in a community meant joining in with the community and its institutions. One of dad's lasting legacies is the Mia Mia Hall which was slated for demolition by the Shire as nobody used it and it was falling into disrepair. Not good enough, thought dad, so began New Year's at the Hall (about 10 of us to start!), fund raising for repairs (Kite Days – great fun for the whole community!), flower shows, opera, walking groups and saving the Honour Roll. He was an active member of the Mia Mia CFA for many years and ultimately a CFA Life member.

The wrench of leaving the farm when it became unmanageable as they grew older was very real – dad had hoped to be carried out in a pine box. But they settled into their new home at the edge of Kyneton with time to do a bit of travel and enjoy their grandchildren. Sadly, this was cut short by mum's passing – an event that really knocked dad, the apparently unsinkable, for six. But, one step at a time, he re-wove a new life without mum – friends and activities began to fill his days – his church, the Zetland Lodge, the Men's Shed, his lifelong association with the ALP, coffee with the boys on Tuesdays and Thursdays – all allowed dad – never one to do things by halves - to contribute positively to others and the community.

Dad's ability to triumph over adversities large and small by just getting up and carrying on was phenomenal. Though he had eschewed the original chance of formal education he was bright and intelligent and willing to work. His lifelong love of music began with free orchestral concerts that he used to go to with mum when they were 'courting', I was taken to my first opera (Madam Butterfly with Joan Hammond) when I was 8 (so was Lynda but she slept through it!) it must have been a struggle to afford it but wonderful. We used to sing opera (and other things) in the car (Nana the FJ Holden) while long distance travelling and the love of opera

and classical music, especially his beloved Mahler, never left him. Not being able to go to live performances was a serious deprivation though he had recently enjoyed going to the opera at the theatre at Castlemaine.

He was a voracious reader and studier of the things that interested him (especially political biography and business and Freemasonry) and daily news. His love of wine and food was also a constant from early days in the Hunter Valley, an early subscriber to Lake's Folly, Tyrrell's and Rothbury and a member and serious enjoyer of exceptionally long lunches at Len Evans' at Bulletin Place he stopped cold turkey when he lost a kidney to cancer – Ian and Guy benefited from the breakup of his collection.

Dad's great gift however was his capacity for friendship and fellowship. A stranger was just a friend he hadn't met yet. This attitude sometimes left him sadly disappointed in people who didn't, as he did, believe that their word was their bond and that the best solution to a problem was one that left everyone satisfied and not the devil take the hindmost but he viewed people that treated him badly as anomalies and moved on to the next positive experience.

He brought up daughters (even he would acknowledge that mum did the hard yards there) who loved, admired, and respected him and who will miss him every day for the rest of their lives. He welcomed sons in law as sons in fact while driving them nuts by not being able to work remotes or his phone or computer programs no matter how many times they were explained. He adored his grandchildren and supported their every endeavour from kindy concerts to freezing at soccer and hockey games and learning drums and graduations. He was so proud of them, and they loved him back. He had the great joy of meeting great grandchildren. One sad fact is that the last year has been so difficult for all of us – dad never did get the hang of face time or opening photos on his phone – but he did do emails.

Dad has gone now and many of us will miss him, but he was strong and serene at the end, and we must be thankful for that. He left everything better than he found it. It was a pleasure to know him.



Campaspe River Update

Delighted to read in the June edition of Bridge Connection about the work the River Detectives are doing at Redesdale Mia Mia PS. Well done! Keep up the good work. I used to enjoy exploring, swimming, catching yabbies and generally just loving it down the river when I was young. The river needs detectives like you to watch and learn and take care of it.

Great to see a good volume of water flowing in the river after the recent rains.



Coliban Water/Lendlease are continuing to negotiate with some landholders regarding compensation for the costly trials and tribulations the contamination of the river in 2019 caused, and others regarding the use of water from the KWRP for irrigation purposes and the placement of the pipeline required to facilitate this. Still no news to report from the EPA or Coliban Water/Lendlease regarding the licence review. The completion of the new storage dam at the KWRP was announced on Coliban's website on June 19th and as those photos show, already holds a good deal of water.

Lake Eppalock (as at June 18 2021) Goulburn-Murray Water is warning the public to avoid contact with water in Lake Eppalock after monitoring detected high levels of blue-green algae. It is recommended that alternative supplies for stock drinking be used. Stock and pets should be kept away from the water. Watering of edible garden plants should be avoided. Visit www.g-mwater.com.au/news/bga for next update due June 25th. Turpins Falls remains closed to the public.

Letter to the Editor

PLEASE NOTE:

Views expressed in this newsletter are not necessarily the views of the publisher of The Bridge Connection.

Hi Regina,

I have a few safety concerns with regard to vehicles travelling through our hamlet of Mia Mia, especially through the Murchison St. section of the road from and to the Heathcote road.

As you are aware I drive the school bus from Glenhope to the Kyneton High school bus loop each day and I have many stops to pick-up students as well as dropping off my little mob after school.

My concerns are these;

#1.

The intersection at the meeting of the Burke & Wills Track and the Heathcote rd only has a "Give way" sign, not a "Stop" sign! The view toward the right on-coming traffic from Heathcote is strained because of the angle of vision.

#2

My drop-off point at Mia Mia is on a left leaning curve and I have little view of vehicles coming down the hill toward my travel to the track.

Over a short time there appears to have been an increase in heavy vehicles plying this road and drivers are want to get a run-up for the coming hill; fair enough, but we need a safety zone for school kids in our area.

More to come,

Bryan Pickup

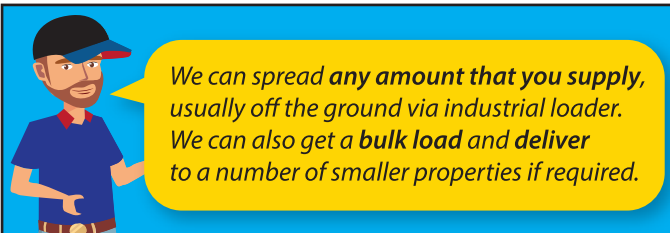
Local School Bus Driver

creative
designs
for your
business

logos menus flyers posters
invitations brochures magazines
business cards advertisements
letterheads with compliment slips
full business imaging

lyn ingsles | graphic designer
blupen@bigpond.com
0429 911 980

Proudly Sponsoring
assistance to the 'Bridge Connection'



We can spread **any amount** that you supply, usually off the ground via industrial loader. We can also get a **bulk load** and deliver to a number of smaller properties if required.

FERTILISER SPREADING SERVICE



**Contact
for a quote**

Please contact

Carl 0412 144 936

or **David 0427 546 586**

No job too small,
no job too big,

email: carl@glendarling.com.au

119 Darlington Road Baynton VIC 3444

SUPPORT YOUR ADVERTISERS

'THE BRIDGE CONNECTION COMMUNITY NEWSPAPER'

...is **supported** by **local businesses**

and it is important, in return

for the community to **support them**.

For rural regions to succeed in business they need the 'locals' to keep them viable by conducting business in our township.

So! next time you need something for a job that you are working on... look to the

'Bridge Connection' and give a **LOCAL BUSINESS** a try.

**BUY LOCAL
WHERE YOU
ARE ABLE TO.**

**SUPPORT THE TOWN THAT
SUPPORTS YOU... THANK YOU!**



To advertise in the 'Bridge Connection'
please contact the Editor

Regina Bennett on: **0437 514 223** OR email
bridgeconnection.editor@gmail.com

WHAT ARE YOU WATCHING?

????????????

During the colder months it seems some days are just not worth stepping outside, for fear of cold, wind or hopefully rain in our districts case. We are hearing from Redesdale residents they are into certain programs for entertainment these days and thought we might share their tips.

If you would like to contribute suggesting some entertainment

topics, please send them to the Bridge Connection email below .

bridgeconnection.editor@gmail.com

"GOOD WATCHING EVERYONE"

1. MARE of EASTOWN (Foxtel)
2. The Undoing. (Foxtel)
3. Atlantic Crossing. (SBS iview)
4. Dublin Murders. (SBS iview)
5. Smother. (ABC iview)
6. Wakefield. (ABC iview)
7. Dead water Fell (SBS iview)
8. The English game. (Netflix)
9. Designated survivor. (Netflix)
10. Sanditon. (ABC iview)

Support your **community newspaper** the
'Bridge Connection'
who is supporting **your community**.

Visit: **www.redesdale.net**
district,events, businesses and news.

For more information turn to **page 3**
for advertising rates or call and chat to

Editor - **Regina Bennett 5425 5402.**

'Bridge Connection' Community Newspaper

Need to advertise your **business locally?**

Support the

'Bridge Connection'

it is a great way to let the community
know you are **open for business.**

For more information turn to **page 3**
for advertising rates or for more information phone

Editor - **Regina Bennett 5425 5402**

'Bridge Connection' Community Newspaper



For immediate release
Media release

23 June 2021

Tree works start soon

Every year Council undertakes tree pruning works to improve public safety and appearance of treed areas throughout Mount Alexander Shire.

As part of Mount Alexander Shire Council's annual tree management program, pruning is set to commence shortly and will occur on street trees in Castlemaine and Maldon, and in several parks and reserves.

Street tree pruning will occur throughout Maldon and in the central areas of Castlemaine. Priority areas in Castlemaine include:

- Barker Street (between Dudley Street and Forest Street), Castlemaine
- Templeton Street (between Hargraves Street and Kennedy Street), Castlemaine
- Parker Street (between Barker Street and Kennedy Street), Castlemaine
- Kaweka Street, Castlemaine

Parks and council properties identified for major works include:

- Castlemaine Botanical Gardens
- Western Reserve, Castlemaine
- Campbells Creek Community Park
- Bill Woodfull Recreation Reserve, Maldon
- Maldon Public Gardens
- Stanley Park North, Harcourt

The works will remove dead wood from trees, reduce and remove hazardous branches and maintain appropriate clearances from roads, footpaths, street lights and signs.

The trees identified for maintenance are based on a proactive assessment by Council's Tree Management Officer to maintain tree amenity, health and safety.

All tree works will be carried out by qualified arborists in line with Australian Standards.

Every effort will be made to retain tree shape and character. Trees on private property will not be pruned.

The street tree maintenance program is expected to have minimal impact on the community. Please adhere to traffic management plans in place to help ensure safe speed zones of 40km/h while works are underway.

The tree pruning program will start in July and is expected to be completed by November. The works are separate to the annual powerline clearance program.

Media enquiries:

Anne-Marie Middlemast, Communication Officer

Mount Alexander Shire Council

Tel: 5471 1810 or 0448 133 160 Email: a.middlemast@mountalexander.vic.gov.au

CV SHEDS
Est. 1975

Quality supplier and installer of:

- Farm Sheds - Work Shops
- Hay Sheds - Garages/Barns
- Quality RHS Frames
- All Australian Steel
- Shed Materials - purlins/ sheeting also available

Been Building sheds in Central Victoria for over 40 years

Come and visit us at 12 Bourke St Kyneton
Mon- Fri 8 am to 4.30 pm, other times by appointment
03 5422 6644 or info@cvsheds.com.au www.cvsheds.com.au

RECIPE OF THE MONTH

59



Chocolate Peanut Butter Cheesecake (In Nigella's words, "this is pure indulgence")

Base

- 250 g digestive biscuits
- 50 g salted peanuts
- 100 g dark chocolate chips
- 100g soft butter

Filling

- 500g cream cheese
- 3 large eggs
- 3 large egg yolks
- 200g sugar
- 124ml sour cream
- 250g smooth peanut butter

Topping

- 250ml sour cream
- 100g milk chocolate chips
- 30g light brown sugar

Method

- Make sure all ingredients are at room temperature.
- Preheat the oven to 170°/150°Fan.
- Process the biscuits, peanuts, dark chocolate chips and butter in a food processor.
- Once it comes together in a clump, turn it out into a 23cm/ 9 inch springform tin and press into the bottom to make a crunchy crust.
- Put it in the fridge while you make the filling.
- Process the filling in the cleaned processor bowl, putting in the cream cheese, eggs and egg yolks, sugar, sour cream and peanut butter. Whizz till the mixture is smooth.
- Pour and scrape the filling into the base in the chilled springform tin and cook for one hour.
- Take the cheesecake out of the oven while you make the topping.
- Warm the sour cream and chocolate with the brown sugar gently in a small saucepan over low heat, whisking to blend in the chocolate as it melts, and take it off the heat.
- Spoon and spread the topping very gently over the top of the cheesecake, being as careful as you can not to break the surface of the cheesecake. (It will just have a marble look if it breaks).
- Put it back in the oven for 10 minutes. Once out of the oven, let the cheesecake cool in the tin.

Nigella Lawson

Redesdale Hall



FOR HIRE

Amenities are available for catering, meetings, weddings and club or family celebrations.

Please phone

Carolyn (03) 5425 3194 for more information.

Redesdale Hall Activities:

- 2nd Tuesday monthly, 1pm - Hall Comm. Meetings.
- 2nd Tuesday monthly, 7 pm - Rec. Reserve Meetings.

Redesdale

HOME HISTORY COMMUNITY BUSINESS BRIDGE CONNECTION LOCAL THINGS TO DO EXPLORE THE REGION



Visit Redesdale Website

Welcome to Redesdale.

Calendar

www.redesdale.net

PARTY EQUIPMENT FOR HIRE

The following party equipment is available for **HIRE** from the **REDESDALE RECREATIONAL RESERVE COMMITTEE (RRRC)**.



Commercial sized steel roaster	\$120 per weekend
Large marquee, 3m x 6m	\$225 per weekend
Collapsible marquee, 3m x 3m	\$80 per weekend
Tables, 1.8m x 1m	\$8 each per weekend
Table cloths, white	\$10 each
Chairs, white plastic	\$2.50 each
Umbrellas, charcoal	\$5 each

A bond will be required on most equipment for hire.

All proceeds go to the **RRRC**.

For more information or to make a booking, please email: **3444reserve@gmail.com**

Redesdale Ramblings

#5. Perennial Annuals

Though it might seem a contradiction in terms, some annuals seem to be “perennial” because they come up from seed every year.

In our garden the most obvious of these are the poppies. The corn poppy or “Flanders Poppy” is the most recognisable with its brilliant red blooms with a black centre. The “Shirley Poppy” was developed by carefully selecting seedlings showing a small variation in colour. There is now a huge range of colours from soft pastels to bright primary colours. However a recent selection is called “Shades of Grey” (not sure if there are 50 of them!) now available in Australia. Poppy seed can be sown anytime from autumn through winter as they germinate with the moisture available at this time. Scatter the seed on freshly tilled/cleared soil as they need light to germinate (don’t cover them). The tiny seedlings belie the final size of the adult plants so don’t crowd them in! They soon develop into rosettes of furry green leaves and with the spring send up their flower stems. When the petals fall the seed pods swell; as they dry out they become perforated around the top – when the wind blows the ripe seed get scattered as if from a salt-shaker.

Calendulas can survive the winter but are mostly treated as annuals. They set a lot of seeds which ripen slowly over the summer. The curious curved seed when dried look very unassuming but soon become sturdy plants crowned with a continuous procession of yellow or orange daisies. They may be single or double and the colour range is expanding, some of the newer ones including “Strawberry Blonde” and “Bronze Beauty”. I think that seeds can be sown just about any time but they seem to germinate best in autumn or early winter so they are ready to bloom in spring. The petals can be added to your salads and have been used in folk medicine and in cosmetics.

You might love the look of Forget-me-nots as a froth of tiny blue (or white or pink) flowers around your flowering bulbs. You won’t love it when your dog or cat wanders through them and the seed pods stick in their fur. Inside the pods are the shiny black seeds and the action of furry friends helps spread them out around the garden. When they germinate they start as tiny rounded, furry leaves resembling mouse-ears which

inspired the Latin name *Myosotis*. If you want to limit the number coming up it’s best to pull out the plants when they start to form seeds.

Cerinth major or “Honeywort” has glaucous blue-green foliage which is attractive in its own right. The flowers are an added bonus. As it is related to borage it unfurls its cyme of buds slowly and the mature flower dangles like a bell to attract pollinators. The type form is yellow with a maroon base but the form most grown here is ‘*Purpurescens*’ which not only has purple flowers but a livid colouring to the bracts surrounding the buds.

Larkspurs are essentially annual delphiniums but have less of a colour range, mostly blue, pink or white. The seed capsules open from the top allowing the seeds to fall out easily. They prefer open ground as they can easily be overgrown or outcompeted by more vigorous neighbours. The soft, ferny foliage is unfortunately very attractive to slugs and snails.

We have no need to sow Sweet-peas between St Patrick’s Day and Anzac Day (the prescribed wisdom) because we never collect all the seeds from the previous year and they self-sow really well! They will actually start coming up as early as the start of March and continue into the winter. While they are small we find that they are quite transplantable. The most common one in our garden is an old variety called ‘*Matucana*’ which has bi-colour flowers of red and purple. We’ve had other colours over the years but this seems to be the most persistent.

Apart from the dwarf varieties most sweet peas are climbers and need something to cling to as they grow. This can be a trellis or wire-mesh or whatever gets in their way. The traditional method for growing them is to train them up string lines attached to a frame or a pole. A very labour intensive method I’ve heard of recently is to trim off all lateral growth to concentrate the energy into fewer but larger flower spikes. Some nurseries sell a jute mesh which can be strung up from a few tall stakes – we tried one last year and found it quite successful (and much less work).

cheers

fermi

The Redesdale Rock Gardener



Grey “Shirley Poppy” with red centre



Soft orange ‘Shirley Poppy’

Road trip turns up patchwork treasure

Once in awhile when travelling you come across a little gem that gives you a wonderful surprise and filled your heart with delight.

Recently Paul was invited to judge a photographic competition in Echuca. On our way up from Melbourne we discovered the village of Redesdale around half an hour south of Bendigo Victoria what we found there is one such treasure. We stopped for lunch at Cafe Budburst on the main road which is split into a Room and art gallery.

After enjoying delicious home-made food we visited the gallery which had a few paintings but what caught my eye was a triptych patch work quilt on the wall.

I am A former patchwork teacher so was particularly interested in the beauty techniques and uniqueness of the piece.

The quilt was created with three panels the first by the ladies of the nearby Town of my Mia Mia the second by students of the local school and the third by the ladies of Redesdale.

it was to celebrate the 150th anniversary of the Redesdale Bridge built across the Campaspe river. the quilt was created with colourwash background with various fabrics fabric images of things important to the community appliquéed on top.

Being a horticulturalist what caught my eye with a wonderful depictions of trees particularly that of a marker tree on the first panel.

These trees celebrate the ones marked by indigenous Australians as they made their journeys from one place to another and hold great significance to them. Some are used to give directions others were scared because bark was taken from them to make canoes, shields or bowls .

The second panel showed a tree of life the leaves crate created by representations of the school students hands and third panel included representations of river red gum's prevalent in the area.

If you can include Redesdale in one of your road trips stop and enjoy. if you're there in mid February check out the flowering belladonna lilies in the field opposite the cafe

Maureen Lucas

Printed in the QLD www.thesenior.com.au April 2021



Road trip turns up patchwork treasure

ONCE in a while when travelling, you come across a little gem that gives you a wonderful surprise and fills your heart with delight.

Recently, Paul was invited to judge a photographic competition in Echuca. On our way up from Melbourne, we discovered the village of Redesdale, around half an hour south of Bendigo, Vic. What we found there is one such treasure.

We stopped for lunch at Cafe Budburst on the main road which is split into a tea-room and art gallery.

After enjoying delicious homemade food we visited the gallery, which had a few paintings. But what caught my eye was a triptych patchwork quilt on the wall.

I am a former patchwork teacher so was particularly interested in the beauty, techniques and uniqueness of the piece.

The quilt was created with three panels; the first made by the ladies of the nearby Mia Mia township, the second by students of the local school and the third by the



WOVEN GEM: This commemorative triptych quilt was made to commemorate the 150th anniversary of the opening and naming of the Redesdale Bridge in 1868.

ladies of Redesdale.

It was to celebrate the 150th anniversary of the Redesdale Bridge, built to cross the Campaspe River.

The quilt was created with a colourwash background with various fabric images of things important to the community appliquéed on top.

Being a horticulturalist, what caught my eye were the wonderful depictions of trees, particularly that of a "marker tree" on the first panel.

These trees celebrate the ones marked by Indigenous Australians as they made their journeys from one place to another and hold

great significance to them.

Some were used to give directions, others were scared because bark was taken from them to make canoes, shields or bowls.

The second panel showed a "tree of life", the leaves created by representations of the school students' hands. The third panel included representations of river red gums prevalent in the area.

If you can include Redesdale in one of your road trips, stop and enjoy. If you're there mid-February check out pink flowering Belladonna lilies in the field opposite the cafe.

— MAUREEN LUCAS



Quote of the month:
The love of gardening is a seed once sown that never dies

Gertrude Jekyll

Proudly supporting Bridge Connection



Parliament Prize competition now open

Member for Euroa and Nationals' deputy leader Steph Ryan is encouraging local students who are passionate about their local community to enter the 2021 Parliament Prize competition.

Entries are now open for the Parliament Prize competition for Victorian students in three categories: Year 5-6, 7-9, and 10-12.

Students are invited to submit a video of themselves presenting a Members Statement they would make to Parliament if they were a Member of Parliament.

A Member's Statement is an opportunity for MPs to make a brief statement in Parliament of no more than 90 seconds on matters they wish to bring to the attention of Parliament that are of interest or concern to them and the people of their electorate.

"This is a great opportunity for students to speak up about issues that they are passionate about and that are important to their local community," Ms Ryan said.

"I regularly speak to students from our local schools so I know there are a lot of students who would perform brilliantly at such a task."

Students wishing to enter the competition can submit a video recording of themselves or use an animated avatar.

Judges will look for entries that demonstrate a clearly articulated message, interesting insights, ideas and/or perspectives and a clear understanding of why this issue or idea matters.

Students can win \$500 for themselves, as well as \$1000 for their school.

For more information on the competition, including terms and conditions

visit victorianparliament.us.launchpad6.com/ParliamentPrize2021

Rise in farm theft

Rise in farm theft builds case for dedicated crime squad
Farm crime continues to rise nearly two years since the Labor Government promised to crackdown on livestock and equipment theft from Victorian farms.

New data from the Crime Statistics Agency (CSA) has confirmed a 9 per cent increase in livestock stolen in the past 12 months.

And despite the 'crackdown' most crimes still go unsolved. Shadow Minister for Agriculture Peter Walsh said it showed Labor had got its "specialised farm crime unit" wrong.

"Instead of appointing extra police dedicated to solving farm crime, Labor shuffled the deckchairs with a rebrand of the existing Agricultural Liaison Officers (AGLOs)," Mr Walsh said. "Our police work hard with the resources they have to keep us safe, but Labor's failure to appoint dedicated officers means rural crime's getting worse – not better – and offenders are walking free."

"The Liberal Nationals have long supported farmers' calls for a dedicated, rural crime squad with the time and resources needed to make sure criminals face the consequences."

The Labor Government announced a "specialised farm crime unit" in September 2019, but instead of extra police dedicated to solving rural crime – as farmers had called for – Labor just rebranded the existing Agricultural Liaison Officers (AGLOs).

The new CSA data shows 257 livestock, worth more than \$1.9 million, were stolen across the state in the 12 months to March this year – up from 234 the year before.

There were just four arrests meaning 82 per cent went unsolved. Cattle theft reached a 15-year high with 90 stolen in the year to March 2021.

"A lot of rural crime goes unreported because farmers and rural landholders just accept that it will be difficult to get investigators out to help them," Mr Walsh said.

"It's a direct result of there being too few frontline police dedicated to solving rural crime and to provide an active and visible police presence in the community."

"The Labor Government likes to snag a cheap headline but goes to ground when it fails to deliver."

"At a time when we've endured four lockdowns, rural crime has continued to rise, but the Labor Government still refuses to appoint the dedicated squad that's needed to better protect our farmers."

Media contact: Emma Manser 0437 225 386 emma.manser@opposition.vic.gov.au

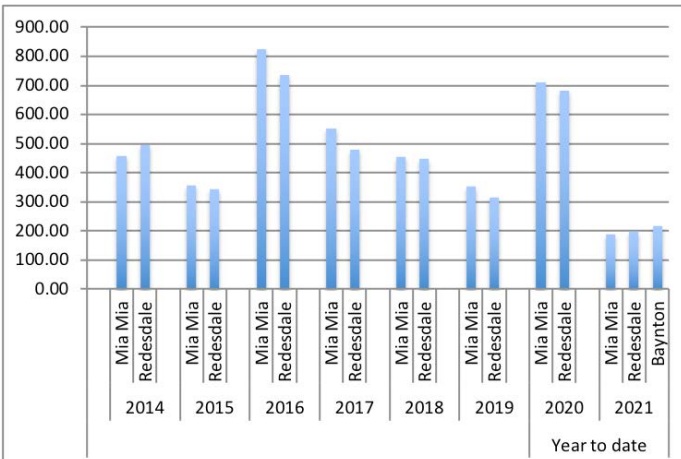
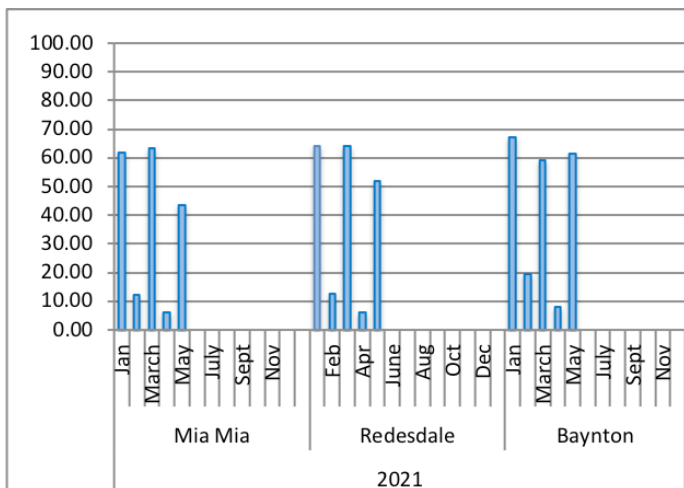
Redesdale
/ Mia Mia

Rainfall



The average yearly rainfall for **Redesdale** is about 601mms.

Thank you to **Helen Bennett** for the
Mia Mia readings & **Belinda Ryan** for
Baynton readings



May Rain Fall

Redesdale 51.8mm Year to date 198.80mm

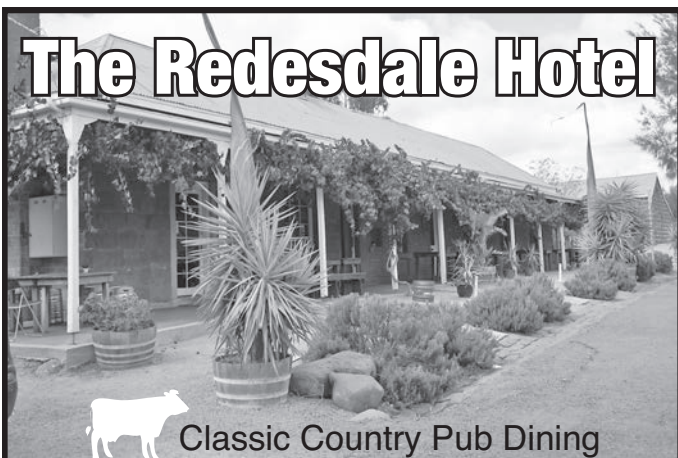
Mia Mia 43.50mm Year to date 187.50mm

Baynton 61.60mm Year to date 215.60mm

Year Totals for Previous Years

2016	Mia Mia	826.00
	Redesdale	735.40
2017	Mia Mia	551.75
	Redesdale	479.60
2018	Mia Mia	455.00
	Redesdale	448.40
2019	Mia Mia	352.00
	Redesdale	315.00
2020	Mia Mia	711.25
	Redesdale	682.85

The Redesdale Hotel



Classic Country Pub Dining

**For bookings
please call (03) 4405 0601**

Monday - Closed
Tuesday - Closed
Wed to Sun • Lunch 12noon - 2.30pm
• Dinner 6pm - 8.30pm

The Redesdale Hotel
2640 Heathcote-kyneton Road
Redesdale, Vic, 3444

info@theredesdalehotel.com.au



The Redesdale Hotel

redesdalehotel



www.theredesdalehotel.com.au

Need to advertise your **business locally?**

Support the

'Bridge Connection'

it is a great way to let the community
know you are **open for business.**

For more information turn to **page 3**
for advertising rates or for more information phone

Editor - Regina Bennett 5425 5402

'Bridge Connection' Community Newspaper

LOCAL REDESDALE / MIA MIA - CONTACT LIST

<https://www.redesdale.net>

FIRE REPORT A FIRE 000

**VIC BUSHFIRE INFO LINE
1800 226 226**

REDESDALE FIRE BRIGADE

- Captain Paul Atkins 0409 141 215
- Secretary Lee Mason 0422 055 278



MIA MIA FIRE BRIGADE

- Captain Calvin Millard 0409 979 037 A/H: 9744 6745
- Mia Mia Fire Brigade Secretary - Steve Cadasch 5425 5548

LOCAL ORGANISATIONS

BRIDGE CONNECTION MAGAZINE

Editors: Regina Bennett 0437 514 223

Bridge Connection President - Gloria Pocock

Bridge Connection Treasurer - Marissa Leahy

MIA MIA MESSENGER Enquiries 5425 5565

Mia Mia Hall Committee - Wendy Hulls 5425 5590

Mia Mia Mec. Inst. Secretary - Wendy Hulls 5425 5590

Mia Mia Mec. Inst. President - Anthony Ryan 5425 5578

Mia Mia Reserve Comm. Secretary - Anthony Ryan 5425 5578

Mia Mia Reserve Comm. Chairperson - Grant Hulls 5425 5590

Otis Foundation 5444 1184

Redesdale and District Assoc. Inc - Lin Newton 0418 583 304

Redesdale Hall Committee - C. Boyd (Sec) 5425 3194

Redesdale Hall Hire - C. Boyd (Sec) 5425 3194

Redesdale Rec. Res. Cttee - Craig Newton 0448 021 544

email: 3444reserve@gmail.com

Suicide Bereavement Service - 'Standby' 0439 173 310

Tennis Club - Linda Newnham 0400 554 716

TOWNSHIP BUSINESSES

Redesdale Hotel - Beth & Garth 03 4405 0601

Redesdale General Store 5425 3154

Café Budburst - Sarah 0407 551 578

The House Gallery - Joyce 0408 154 315

COUNCILLORS

City of Greater Bendigo - Eppalock Ward

Matthew Evans 0437 867 028

Marg O'Rourke 0429 061 096

Greg Penna 0429 721 958

POLITICIANS

Federal Member for Bendigo - Lisa Chesters (Labor) 5443 9055

State Member for Euroa - Steph Ryan (Nationals) 5762 210

SCHOOLS

Redesdale Mia Mia Primary School 5425 3155

Kyneton High School 5421 1100

HEALTH SERVICES

Bendigo Health 5454 6000

Heathcote Health 5431 0900

Kyneton Health 5422 9900

Royal Flying Doctor Community Transport
(Heathcote) 5431 0900

TOURIST INFORMATION CENTRES

Heathcote Visitor Centre 5433 3121

Bendigo Visitor Centre 1800 813 153

Kyneton Visitor Centre 1800 244 711

REGULAR ADVERTISERS

Connolly Glass 0428 535 101

Lisa Chesters 5443 9055

The Optometrist 4411 6802

Palmer Steven & Rennick 5422 6500

Redesdale Hotel 4405 0601

Redesdale General Store 5425 3154

Fertiliser Spreading Service 0412 144 936
or 0427 546 586

Café Budburst 0407 551 578

Steph Ryan 5762 2100

Tucks Windows 5446 8855

William Farmer Funeral Directors 5441 5577

ORGANISATIONS

City of Greater Bendigo 5434 6000

Macedon Ranges Shire 5422 0333

Mitchell Shire Council 5734 6200

Mount Alexander Shire 5471 1700

POWERCOR 132 412

SPONSORS Without their support our community would not thrive - Thank you!

blue pencil publishing 0429 911 980

Elphinstone Post Office & Store 03 5473 3200

Heathcote Community Bank 1300 236 344

Kyneton Copy Centre 03 5422 2400

Kyneton Veterinary Hospital 03 5422 1099

Redesdale General Store 03 5425 3154

KYNETON VETERINARY HOSPITAL



Send us a picture of your very special pet and a few words to describe him or her and why you love your pet so much.

Send to: bridgeconnection.editor@gmail.com

A prize at the end of the year will be awarded for the best entry.



Halo, six year old mare

This is Halo, she is a six year old mare, that I bred, she has the loveliest disposition and is extremely inquisitive!

Jan Mckindley

KYNETON VETERINARY HOSPITAL

Call us today 5422 1099

'Where animal lovers heal'

Congratulations



Oscar Stellios Morabito.

Born 2.16kg.

Length 51cm

First Child of Mia Mia residents

Megan and Anthony Morabito



Free Wi-Fi
at Redesdale
Pavilion

Proudly brought to you by



SUPPORT YOUR ADVERTISERS

'THE BRIDGE CONNECTION COMMUNITY NEWSPAPER'

...is **supported** by **local businesses**

and it is important, in return

for the community to **support them**.

For rural regions to succeed in business they need the 'locals' to keep them viable by conducting business in our township.

So! next time you need something for a job that you are working on... look to the

'Bridge Connection' and give a **LOCAL BUSINESS** a try.

**BUY LOCAL
WHERE YOU
ARE ABLE TO.**

**SUPPORT THE TOWN THAT
SUPPORTS YOU... THANK YOU!**



To advertise in the 'Bridge Connection'
please contact the Editor

Regina Bennett on: 0437 514 223 OR email
bridgeconnection.editor@gmail.com



LITTLE FREE LIBRARY



Please 'donate' by simply adding Books, Magazines and DVD's to the cabinet... *Thank you*

Located behind the
Community Notice Board
Inside the Redesdale Recreation Reserve
Redesdale Recreation Reserve,
2631 Kyneton - Redesdale Road
Redesdale Vic 3444

Palmer Stevens & Rennick

Barristers & Solicitors *Founded 1852*

Palmer Stevens & Rennick

provide advice to clients all over Australia.

- Powers of Attorney
- Wills and Estates
- Criminal Law
- Conveyancing
- Property Law
- Family Law
- Agribusiness Law
- Commercial Litigation
- Traffic Law and Toll Fines
- Appearing in Castlemaine Court
- Pre purchase advice for large Agribusiness Assets
- Compensation for Government Acquisitions



Mr Joseph Palmer
Founder of
Palmer Stevens & Rennick

8 Jennings Street, Kyneton
or P.O. Box 1, Kyneton Vic 3444
Phone: (03) 5422 6500 Fax: (03) 5422 3385
Email: psr@psr.net.au

OPTOMETRIST NOW OPEN IN HEATHCOTE

Open for appointments
TUESDAYS & FRIDAYS
Great frame range
complete glasses from \$99



59 High Street Heathcote

For appointments
please phone 4411 6802

**THE OPTOMETRIST
HEATHCOTE**

A good life
deserves the
best farewell

 **WILLIAM
FARMER**
FUNERAL DIRECTORS

Andrew and Heather Hampton

151 McCrae Street Bendigo
12 Victoria Street Eaglehawk

P: 5441 5577

www.williamfarmer.com.au

A tradition that continues...