

**FREE**

ISSUE NO. 124 September 2021

For the Mia Mia- Redesdale Region including:

- Heathcote • Derrinal • Glenhope • Baynton • Sidonia • Barfold
- Langley • Sutton Grange • Elphinstone • Kyneton • Metcalfe

# BRIDGE CONNECTION COMMUNITY NEWSPAPER



## Zooming

lessons online with their teachers...



COVER CONCEPT COURTESY/lyn ingles / blue pencil publishing

The 'Redesdale Mia Mia' school children are experiencing school life differently due to the COVID exposure. With modern technology advancements they are able to classroom online. Teachers are assisting them to learn this different process and it seems it may be the mode of learning for the children for some time to come. It is also important that they are able to keep in touch with school mates.

**'Redesdale Mia Mia'**  
School news inside  
this issue.

**TURN TO PAGE 4**

We're open 9am-5pm Monday to Friday or call us on  
(03) 5433 3115 to speak to a friendly staff member.

[heathcotenagambie.community](http://heathcotenagambie.community)

Community Bank  
Heathcote & District

**B Bendigo Bank**

[www.koolevale.com.au](http://www.koolevale.com.au)

6th

# ON-PROPERTY RAM SALE

Wednesday  
13th October 2021  
Inspection: 10.30am  
Helmsman Sale 12.30pm  
ALAN HARRIS  
0417 058 780



**50 MERINO & POLL MERINO RAMS**

**24 WHITE SUFFOLK RAMS**

**Merino Inspection Day - 1st October**



SELLING AGENTS

**28 PARFREY ROAD, COSTERFIELD**

Adam Millard 0400 499 064

3% REBATE TO  
OUTSIDE AGENTS

## COUGH OR COVID COUGH?

The only way to be sure is with a test  
at the first sign of any symptom.

**ONLY A TEST  
CAN TELL**

**For testing locations,  
visit [CORONAVIRUS.vic.gov.au](https://coronavirus.vic.gov.au)**

Authorised by the Victorian Government, Melbourne





## Editorial

Dear Readers this month and still in lock-down and no community events held.

Not much to report hope everyone is holding up well.

Please send in some what have you been Watching, Reading or Where have you been info to the below email.

**[bridgeconnection.editor@gmail.com](mailto:bridgeconnection.editor@gmail.com)**



Regina Bennett

**Regina Bennett.**

**Editor:** Regina Bennett

**Ph:** 0437514223

**e:** [bridgeconnection.editor@gmail.com](mailto:bridgeconnection.editor@gmail.com)

## BRIDGE CONNECTION COMMUNITY NEWSPAPER

### Advertising Rates/Sizes

Size	Height x Width	Price per issue	10 Editions
Business Card	55mm x 90mm	\$25	\$250
Quarter Page	130mm x 90mm	\$50	\$500
Half Page	130mm x 190mm	\$95	\$950
Full Page	270mm x 190mm	\$175	\$1,750

**Colour Advertisements plus 20%.**

**Please Note:  
COPY DEADLINES  
20TH OF EACH MONTH**

Please send editorial or advertising copy to:  
**[bridgeconnection.editor@gmail.com](mailto:bridgeconnection.editor@gmail.com)**  
or by post to **Regina Bennett 3465 Burke & Wills track Mia Mia 3444.**  
For other editorial enquiries, please phone **0437 514 223**

### Bridge Connection Distribution

950 Copies printed and distributed to Redesdale Mia Mia Region, including Barfold, Baynton, Derrinal, Elphinstone, Glenhope, Kyneton, Langley, Metcalf, Sidonia and Sutton Grange

**Disclaimer:** The Bridge Connection Inc. Committee wishes to advise that the views or remarks expressed in this publication are not necessarily the views of the volunteer Bridge Connection Inc. editorial or production team and no service or endorsement is implied by the listing of Advertisers, sponsors or contributors. Although every effort is taken in reproducing and printing advertisements correctly, we take no responsibility for errors.

### Management Committee

**President :** Gloria Pocock

**Secretary:** Regina Bennett (03) 5425 5402  
[bridgeconnection.secretary@gmail.com](mailto:bridgeconnection.secretary@gmail.com)

**Treasurer:** Marisa Leahy 0415 384 217

**Magazine:** Regina Bennett - Editor 0437 514 223

## Bridge Connection

## - Mission Statement -

The mission of **Bridge Connection** is to bring people together by:

1. Providing information about local issues, goals and events, and to celebrate local achievements,
  2. Encouraging economic growth in the area
  3. Fostering geographic identity, and
  4. Providing a platform for public debate
- Bridge Connection is published by local people who volunteer, for local people as a **free paper** and on line at **redesdale.net** and via **face-book**



**[facebook.comRedesdaleMiaMia](https://facebook.com/RedesdaleMiaMia)**



## General Store Liquor Store

AUSTRALIA  
**POST**

**Fully Electronic  
Postage Service**

**Come in for some  
great tasting...**



**Newspapers  
& Groceries**

**Banking  
Facilities**



**Full alcohol  
licence and  
bottle shop  
with local  
wines.**



**Takeaway  
Food Service**



**Fuel  
& Oil**



**Hours:**

**Monday to Friday 7am to 9pm  
Saturday & Sunday 8am to 9pm**

**RJ REDESDALE**

**Phone (03) 5425 3154  
2609 Main Road, Redesdale**

Acting Principal: Andrew King

Phone: 5425 3155

Email: [redesdale.mia.mia.ps.ps@education.vic.gov.au](mailto:redesdale.mia.mia.ps.ps@education.vic.gov.au)

## Redesdale Mia Mia Primary School



### School News

*Respect, Resilience & Relationships*



RMMPS is buzzing with activities at the moment. Over the past month, we worked as a team through two lockdowns and a lot of other learning activities here at school. More recently, we had a small fire and marshmallows to celebrate how far we have come as a school. It was a lovely opportunity to sit around the fire, play ukeleles and talk about different things that are happening in all of our lives. We have learnt so much about each other and thoroughly enjoyed each other's company.

### Book Week Parade

On Friday the 27th, as part of Book Week, we are dressing up as our favourite characters and going for a bit of a walk up the main street of Redesdale. We will be heading up past the Redesdale Hotel then crossing and coming back by the Recreation Reserve. We are aiming to leave here around 10AM. We would love to see as much of the community out and about as we could, so if you are free and would like to come give the students a clap or a wave, they would thoroughly enjoy it.

### Tree Planting

On Monday the 23rd, the students and teachers will be planting around 300 new plants on the school grounds. Lydia, our fantastic STEM and Living Green Teacher, has organised this huge planting session through a successful Landcare Grant. It is going to be a great day outside, learning about our environment and helping it out through planting numerous Australian natives.

### Spring Haiku

The cold days are gone,  
The snow and  
rain disappear,  
The eggs are hatching.

### Purple

Purple sounds  
like silence.  
Purple feels like a  
bruise.  
Purple tastes like  
Hubba Bubba .  
Purple smells like a  
flower.  
Purple looks like a  
grape.

**Poetry from the  
students!**

# REDESDALE CFA

A changing of the guard.

At a recent election held at the fire station a number of long serving members took a step back from their positions. The brigade and community would like to thank them for their hard work.

The brigade is not only about fighting fires. It has a strong presence in Redesdale and District by supporting local events, traffic management, catering and fund raising. Our Community Safety Officer and Catering coordinator, Don White and Brian Paterson, have unfortunately retired from their positions. A big thanks to both of them for making the numerous events that we have held a success, and ensuring that they ran smoothly.

Our First Lieutenant, Lindsay Booker, has stood back from his position. A Life Member and trainer of almost everyone in ours and neighbouring brigades, Lindsay will be missed at Brigade Management level. Congratulations to Chris Simpson for taking on the role.

Our long serving President, Tom James, has also retired from his position after more than a decade. It must be in the blood, Brian James held the position for two decades. Thanks go out to Tom who will be ably succeeded by Tony Leahy. The most unenviable position in the brigade would have to be that of secretary. With ever increasing demand for documentation, correspondence and compliance Lee Mason has handled the job since 2013 with aplomb. Thanks for all that you have done Lee and welcome to our new secretary and new member Geoff Thomas. Geoff has already had a taste of brigade life, volunteering for a recent fund-raiser. Well done.

Look forward to working with the new team.

**Andrew Campbell.**



## Proudly printed in Kyneton

Castlemaine, Kyneton & Gisborne

**CopyCentre**  
Printing together for our community

Design & Pre-press  
Plan Scanning, Finishing Services.

*Not just a Copy Centre...  
we are so much more.*



**www.windarring.org.au**

58 Mollison Street  
Kyneton  
03 5422 2400

## Elphinstone Post Office & General Store

*'In the heart of the  
Elphinstone community'*



- Newspapers/ Magazines
- Origin Gas Bottles
- Bread • Milk & Groceries
- Postage Services

*'The General Store where  
community meets business.'*

Gill & Dave (03) 5473 3200  
9 Bateman Street, Elphinstone



You are warmly invited to

# BARFOLD

## COMMUNITY CHURCH

Meets 10.00 am

2nd – 5th Sundays each month

followed by morning tea

at Barfold Union Church

Heathcote-Kyneton Rd, Barfold

Contact; Leigh 0425812786



## UNITING CHURCH

10am Start

Morning Tea is shared before each service at 9.45



Due to the Coronavirus (COVID-19)  
Please see below website for Changes to services

[www.macedonrangesuningchurch.org.au](http://www.macedonrangesuningchurch.org.au)

**Metcalf September 12th**

**Barfold September 26th**

Please check above website for changes due to Covid restrictions.

For more information go to -

[www.macedonrangesunitingchurch.org.au](http://www.macedonrangesunitingchurch.org.au)

## CATHOLIC CHURCH

**Redesdale** 2nd Sunday of each month 11am

### COMMUNITY DEFIBRILLATOR

located on the side of the Redesdale fire station

Access code is 3444 ( Redesdale post code)

### DEFIBRILLATOR

The Community owned defibrillator  
is now accessible to all  
community members.

It is situated on the outside wall of the CFA building  
(next to Café Budburst ).



creative  
designs  
for your  
business

logos menus flyers posters  
invitations brochures magazines  
business cards advertisements  
letterheads with compliment slips  
full business imaging

lyn ingles | graphic designer  
blupen@bigpond.com  
0429 911 980

Proudly Sponsoring  
assistance to the 'Bridge Connection'



Turn your house  
into a home  
with Tucks  
locally made products



- Aluminium and Timber Windows
- Window Replacements • Security Doors
- Shower Screens • Wardrobe Doors

We are in your area regularly  
and offer a **FREE** measure  
and quote service.

*We can offer supply and install prices.*



**Tucks  
Windows  
BENDIGO**

Celebrating 43 Years  
providing top quality  
products and  
professional  
friendly service.

P: 03 5446 8855 E: [quotes@tuckswindows.com.au](mailto:quotes@tuckswindows.com.au)

[www.tuckswindows.com.au](http://www.tuckswindows.com.au)

## Ryan calls foul play on Labor's playground closure

Local MP and deputy Nationals leader Steph Ryan has called on the Andrews Labor Government to re-open playgrounds so that local kids can get back outside and back to being kids.

Ms Ryan said playgrounds and skateparks across the electorate remain closed, despite there being no evidence of Covid transmission in either setting.

"Labor's decision to keep playgrounds closed is heartless and cruel," Ms Ryan said.

"Playgrounds provide a much-needed reprieve for families who have been confined to their homes for weeks.

"We know that children are bearing the brunt of Covid restrictions and it's taking its toll on not only their mental health, but the mental health of their families.

"Children cannot go to school and socialise with their friends and now, the government is telling families they can't go outside to the park for an hour each day.

"We've had two terms of kids being locked up in their homes and locked out of classrooms and now they've been locked out of playgrounds too.

"Shutting out kids from playgrounds poses significant social, mental and welfare implications."

Ms Ryan said the Premier had banned playgrounds, despite no scientific evidence that they were a risk.

"Daniel Andrews admitted that the government closed playgrounds not because there was a risk of kids using the equipment, but because the government didn't trust parents to social distance.

"Labor should immediately reverse this decision. Playgrounds are not posing a risk to our kids and closing them is just another of Daniel Andrews' knee jerk reactions.

"Benalla's iconic rocket was one of the many fantastic spots where families could escape the house for half an hour to give kids some joy.

"But like every other playground across the region, Benalla's Adventure Park has been taped off.

"Victorians need a proportionate, target and sensible approach to living with Covid. That's the opposite of what Labor is offering.

"Daniel Andrews has no plan to get us out of lockdown."

Photo caption: Nationals Member for Euroa Steph Ryan said children should be allowed to get back into playgrounds.

Media contact: Caitlyn Putt – 5762 1600 or [caitlyn.putt@parliament.vic.gov.au](mailto:caitlyn.putt@parliament.vic.gov.au)

## Elphinstone Post Office & General Store

*'In the heart of the  
Elphinstone community'*



- Newspapers/ Magazines
- Origin Gas Bottles
- Bread • Milk & Groceries
- Postage Services

*'The General Store where  
community meets business.'*

Gill & Dave (03) 5473 3200  
9 Bateman Street, Elphinstone

## Proudly printed in Kyneton

Castlemaine, Kyneton & Gisborne  
**CopyCentre**  
Printing together for our community

Design & Pre-press  
Plan Scanning, Finishing Services.

*Not just a Copy Centre...  
we are so much more.*



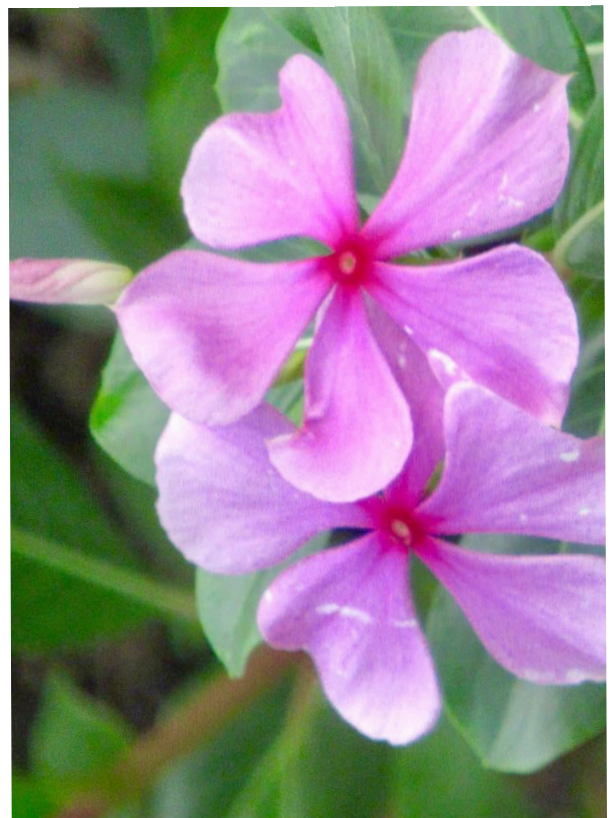
[www.windarring.org.au](http://www.windarring.org.au)

58 Mollison Street  
Kyneton  
03 5422 2400



Our staff and volunteer Board of Directors are very excited to announce that since opening in 2005 we have returned a total of \$1.5 million to the Heathcote & District community - thank to you, our customers!

Since 2005 Many of our local projects have been supported by  
**Heathcote & District Community Bank**  
The Bridge Connection Would like to thank you for the support you have given to our community. Congratulations on the fantastic effort of returning 1.5 million dollars to our community.





## Become a Friend of the Stone Reserve



"As you may have heard, there are plans to develop a "Stone Reserve Heritage Walk" from Redesdale, through Stone Reserve and to a look out point over the Campaspe and the Redesdale Bridge. The area has been surveyed and by the end of July a site plan and a clean –up of the reserve will have been completed.

We are looking to invite interested people to register their interest in the project and become a "Friend of Stone Reserve" (FOSR). There is no fee involved in registering your interest and becoming a friend. If you become a friend, you may want to give your time or expertise to the project – or you may want to volunteer on planting or clean-up days. It would be a great way of getting to know your local neighbours.

If you would like more information about the project, please go to the [www.redesdale.net](http://www.redesdale.net) website and look for the Stone Reserve Strategic Plan.

To register your interest, please email us at:

[stonereserveredesdale@gmail.com](mailto:stonereserveredesdale@gmail.com)  
or ring or text to 0407 116 899"

### Bowen Therapist

Carole Kernohan

Qualified practitioner since 2004

Member of BAA & BTAA

I have assisted to relieve back pain, chronic fatigue, improved general wellbeing & more.  
Suitable for all ages group.

Near centre of **Taradale** & a homebased practice.

**Phone 0407 372426** to make an appointment.

[www.naturaltherapypages.com.au/connect/alternativelycreated](http://www.naturaltherapypages.com.au/connect/alternativelycreated)

NOTE: Covid restrictions apply

## SUPPORT YOUR ADVERTISERS

### 'THE BRIDGE CONNECTION' COMMUNITY NEWSPAPER'

...is **supported** by **local businesses**

and it is important, in return

for the community to **support them**.

For rural regions to succeed in business they need the 'locals' to keep them viable by conducting business in our township. So! next time you need something for a job that you are working on... look to the

**'Bridge Connection'** and give a **LOCAL BUSINESS** a try.

**BUY LOCAL  
WHERE YOU  
ARE ABLE TO.**

**SUPPORT THE TOWN THAT  
SUPPORTS YOU... THANK YOU!**



To advertise in the **'Bridge Connection'**  
please contact the Editor

Regina Bennett on: **0437 514 223** OR email  
[bridgeconnection.editor@gmail.com](mailto:bridgeconnection.editor@gmail.com)



creative  
designs  
for your  
business

logos menus flyers posters  
invitations brochures magazines  
business cards advertisements  
letterheads with compliment slips  
full business imaging

lyn ingles | graphic designer  
[blupen@bigpond.com](mailto:blupen@bigpond.com)  
0429 911 980

Proudly Sponsoring  
assistance to the **'Bridge Connection'**



# Campaspe River Update

## Campaspe River Update and Anecdotes.

- The Goulburn-Murray Water warning for blue-green algae for Lake Eppalock remains lifted with the next update due September 3<sup>rd</sup>. [www.g-mwater.com.au/news/bga](http://www.g-mwater.com.au/news/bga)
- Coliban Water/Lendlease was still waiting to hear back from the EPA regarding the licence review and therefore no news as yet on when the engagement sessions with the community will commence. You can check for news at [www.coliban.com.au](http://www.coliban.com.au)
- According to a Media Release on July 21<sup>st</sup> Service Stream is to acquire Lendlease Services. [www.servicestream.com.au](http://www.servicestream.com.au) for further information. Coliban Water's present contract for networks and plant operations and maintenance with Lendlease, was for 5 years and began in July 2017.
- BNR water has continued to be released to the river from the Kyneton WRP, with the river flow continuing to be measured at Redesdale. Has anyone photos of the flow in Pipers Creek?
- Since Mary-Anne Thomas was shown around the new 200 ML lagoon at KWRP on June 18<sup>th</sup> it has rapidly collected a huge volume of water.
- Waterwatch Victoria is proudly announcing their partnership with Odonata to help save the platypus through their initiative, the Great Australian Platypus Search. If you would like to become a citizen scientist and take part in the groundbreaking project that will map platypus populations across Australia, go to [www.thegreataustralianplatypussearch.org](http://www.thegreataustralianplatypussearch.org)



And now to the anecdotes! We would be very interested to hear your stories and see your photos of our Campaspe. Things like the creatures you've seen, what fish you've caught, the work you've done, the fun you've had on, in and around the river. How high you've seen it rise and how long a stretch you've seen it dry. If you'd like to share your experiences, please include any dates, label them Campaspe Anecdotes and email to [lindysown@gmail.com](mailto:lindysown@gmail.com), sending photos as separate files, and we'll include a story or two each month.



This yabby hole was near one of the many tributaries to the river. As youngsters we often used to see their shells on the rocks after the birds had fed on some for lunch. Sometimes when we caught many yabbies, we'd cart a bucket of them up to an old claw foot bathtub at the top of the hill and watch them move backwards through the water. Then we took them down again and let them go. Sometimes we'd cook up a few of the larger ones to eat. Happy memories from the late 1960s!



# Redesdale Recreation Reserve Committee Report

Hi All,  
Hope everyone is coping with the on going lockdowns and restrictions.

We have received our certificate of occupancy for the pavilion which has enabled us to utilise the facility for meetings and functions. However, we cannot use the deck until the balustrade and stairs are in place. To that end we have the materials ready to go for the next working bee to construct the balustrade and have engaged the services of a community member to construct the stairs. We have also applied for a planning and building permit to have shade sails installed over the whole deck. When it's finished we believe it will be something special that the whole community will be able to admire and utilise.

This has all become possible through the generous support of two community based organisations. Firstly, the Strathfieldsaye and Districts Community Enterprises, SDCE, for providing the grant to complete the deck and secondly, the Foundation for Rural and Regional Renewal, FRRR, for the grant to install the balustrade and shade sails.

We would like to thank Andrew King, the Principal of the Redesdale Mia Mia School, RADA, and The Redesdale CFA for their written submissions of support and encouragement which enabled us to be successful in gaining the grants to make it all possible.


Thanks also to Simon Hills for writing the submissions for the grants.

We have a few more loads of firewood available at \$150 per cubic metre. Please call Lindsay if you require some.

The primary function of the Redesdale Recreation Reserve Committee, RRRC, is to maintain the Redesdale Reserve and surrounds on behalf of DELWP the owners of the land. If you would like to be part of this rewarding and progressive team please do not hesitate to contact any of the listed members. We would also like to hear from anyone who may have any ideas on how we could enhance the reserve and surrounds.

All the best and cheers,

Craig Newton      0408890060  
Mike Abramowski.    Chairman RRRC.  
0418319131.  
Lindsay Booker      0448021544  
John Beurle.          0422001924  
David Page.          0423242774



**LITTLE FREE LIBRARY**

want to know more?  
visit [redesdale.net](http://redesdale.net)

**FREE LIBRARY**

Please 'donate' by simply adding Books, Magazines and DVD's to the cabinet... *Thank you*

Located behind the  
Community Notice Board  
Inside the Redesdale Recreation Reserve  
**Redesdale Recreation Reserve,**  
2631 Kyneton - Redesdale Road  
Redesdale Vic 3444

Redesdale Recreational Reserve Committee Inc.'s

## End of Winter Sale

Winter is coming to an end.  
However, there's still some cold days and nights yet to come.  
Have you burned all your wood yet?



\$150 per Cubic Meter

Free Delivery within 10kms of Redesdale Reserve.  
(\$10 per extra 10kms)

Order via E: [3444reserve@gmail.com](mailto:3444reserve@gmail.com)  
or M: 0448 021 544



# WHAT ARE YOU WATCHING?

????????????

During the colder months it seems some days are just not worth stepping outside, for fear of cold, wind or hopefully rain in our districts case. We are hearing from Redesdale residents they are into certain programs for entertainment these days and thought we might share their tips.

## If you would like to contribute suggesting some entertainment

topics, please send them to the Bridge Connection email below .

[bridgeconnection.editor@gmail.com](mailto:bridgeconnection.editor@gmail.com)

### "GOOD WATCHING EVERYONE"

1. Virgin River (Netflix)
2. Australian Story (ABC)
3. Vampire Diaries Netflix)
4. RFDS (Prime 7)
5. The Rookie (Prime 7)
6. Rose Haven (ABC)
7. Teen Wolf (Stan)
8. White Collar (Disney Plus)
9. Modern Love( Amazon)
10. Bull (\$10 Bendigo)

Support your **community newspaper** the  
**'Bridge Connection'**  
who is supporting **your community**.

Visit: **www.redesdale.net**  
**district,events, businesses and news.**

For more information turn to **page 3**  
for advertising rates or call and chat to

Editor - **Regina Bennett 5425 5402.**

**'Bridge Connection' Community Newspaper**

Need to advertise your **business locally?**

Support the

**'Bridge Connection'**

it is a great way to let the community  
know you are **open for business.**

For more information turn to **page 3**  
for advertising rates or for more information phone

Editor - **Regina Bennett 5425 5402**

**'Bridge Connection' Community Newspaper**



*We can spread any amount that you supply,  
usually off the ground via industrial loader.  
We can also get a bulk load and deliver  
to a number of smaller properties if required.*

## FERTILISER SPREADING SERVICE



**Contact  
for a quote**

Please contact  
**Carl 0412 144 936**  
or **David 0427 546 586**

**No job too small,  
no job too big,**

email: **carl@glendarling.com.au**  
**119 Darlington Road Baynton VIC 3444**



**CV SHEDS**  
Est. 1975

**Quality supplier and installer of:**

- Farm Sheds - Work Shops
- Hay Sheds - Garages/Barns
- Quality RHS Frames
- All Australian Steel
- Shed Materials - purlins/  
sheeting also available

*Been Building sheds in Central  
Victoria for over 40 years*

**Come and visit us at 12 Bourke St Kyneton**  
Mon- Fri 8 am to 4.30 pm, other times by appointment  
**03 5422 6644** or [info@cvsheds.com.au](mailto:info@cvsheds.com.au) KV6245024K [www.cvsheds.com.au](http://www.cvsheds.com.au)



REGISTERED  
Building Practitioner

## RECIPE OF THE MONTH

61

### White Chocolate and Raspberry Mud Cake



180g white chocolate, chopped  
250g butter, chopped  
125 g sugar  
250g sour cream  
225 plain flour  
75g self-rising flour  
7tps vanilla extract  
2 eggs, lightly beaten  
300g frozen raspberries  
Mixed fresh fruit for decoration  
(Any berries, raspberries, blueberries or strawberries)

Preheat oven 170 C/340F. Grease deep 20cm round cake tin and line the base with baking paper.  
Stir butter, chocolate, sugar and sour cream in a saucepan over low heat till all is smooth. Allow to cool for 15minutes.  
Whisk sifted flours, vanilla and eggs into the chocolate mixture.  
Fold in the berries, then pour batter into the pan.  
Bake for approx. one hour and 40 minutes.  
Allow to cool in the pan.  
When cool top with mixed berries and serve with cream.

This is a beautiful celebration cake or just a pick me up anytime Cake.

*Marisa Leahy*

## Redesdale Hall



# FOR HIRE

Amenities are available for catering, meetings, weddings and club or family celebrations.

Please phone

**Carolyn (03) 5425 3194** for more information.

### Redesdale Hall Activities:

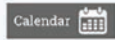
- 2nd Tuesday monthly, 1pm - Hall Comm. Meetings.
- 2nd Tuesday monthly, 7 pm - Rec. Reserve Meetings.

Redesdale



## Visit Redesdale Website

Welcome to Redesdale.



[www.redesdale.net](http://www.redesdale.net)

## PARTY EQUIPMENT FOR HIRE

The following party equipment is available for **HIRE** from the **REDESDALE RECREATIONAL RESERVE COMMITTEE (RRRC)**.



Commercial sized steel roaster	\$120 per weekend
Large marquee, 3m x 6m	\$225 per weekend
Collapsible marquee, 3m x 3m	\$80 per weekend
Tables, 1.8m x 1m	\$8 each per weekend
Table cloths, white	\$10 each
Chairs, white plastic	\$2.50 each
Umbrellas, charcoal	\$5 each

A bond will be required on most equipment for hire.

All proceeds go to the **RRRC**.

For more information or to make a booking, please email: [3444reserve@gmail.com](mailto:3444reserve@gmail.com)



## Redesdale Ramblings

Redesdale Ramblings 2021 #6. Spring is sprung  
There is so much in flower and so much to do this month!  
September is officially spring and we start it off with “Wattle Day” in celebration of our National Floral emblem. It’s always heartening to see the bush light up with the cream and gold wattle flowers as we hurtle by on our way to Bendigo. The specific floral emblem is the Golden Wattle, *Acacia pycnantha*, which is commonly seen on the roadsides around Eppalock.

One that appeared by itself (well, it probably had help from a bird) in our rock garden is a suckering small shrub which I think is *Acacia acinacea*, the Gold-dust Wattle. It really is too big for the rock garden and I hope to be able to relocate one of the suckers to a more appropriate place soon.

We have several other wattles, at least one is a small tree and we thought it was on its last legs a few years ago so took to it with a hand-saw. Big mistake! The resinous nature of wattles quickly gummed up the teeth of the saw and it took ages to just cut out the dead-wood. Surprise, surprise – the stricken tree suddenly had a new lease of life and is still alive and producing flowers each spring. Wattles do tend to be “pioneer plants”, tending to sprout after a fire or after soil has been disturbed. They grow quickly and after a few years of maturity they topple over allowing something else to take their place. Of course, this doesn’t apply to something like the Blackwood, *Acacia melanoxylon*, which can become a sizeable tree.

Phil Don recently introduced us to a prostrate form of the Silver Wattle, *Acacia dealbata*, which Goldfield Revegetation Nursery in Mandurang has managed to propagate. We now have to find somewhere to grow it to allow it to demonstrate its cascading habit.

Among the great variety of bulbs of course daffodils come into their peak from August through September. The favourites are the trumpet types, what many people still refer to as “King Alfreds” after a variety common last century. Nowadays there are hundreds of yellow trumpet daffies and there are many variations on the theme. I’ve

always been partial to the ones that have white petals and bright yellow trumpets and even more to the sort that have yellow petals and white cups (the terms cup or trumpet are sort of interchangeable, but technically, “trumpet” should only be used when the cup is longer than the length of the petal. These are classified as Division 1 daffodils – an important point to remember when entering flowers in a competitive Show – otherwise you don’t need to worry!). When the first pink-cup daffodils appeared there were some people who disliked them to the point of revulsion! But most people just appreciate a bit of variety in the garden and accept them as part of the great tumult of floral expression. Similarly there are some who can’t abide double flowers. My main complaint about them is that they have a tendency to abort their blooms if the spring is too warm and if it is wet the heavy flowers often end up in the mud. One of the most common doubles is ‘Erlicheer’ which is a double tazetta narcissus with a number of flowers on each stem. To me each individual floret is like a formal double camellia in miniature. Tulips usually wait for September before putting in appearance and the huge variety of them can span the entire month with a few outliers on either side. I love the flamboyance of the flowers which can be so sturdy that they could almost be artificial, but can fall prey to bad weather and varmints! These are what are commonly called “Dutch Hybrids” because in Holland they claim them as their own even though they originate in Central Asia. They have been hybridised to the extent that they little resemble their forebears which are more graceful but are limited in colour. The hybrids should be planted where they get plenty of sun and water when in growth but dry during summer. Planting under deciduous trees is effective because the tree roots keep the bulbs dry and the soil is shaded by the canopy. Our winters are cold enough that we can forego the advice given to tulip growers in Melbourne of storing the bulbs in the fridge for a few weeks before planting. I didn’t do that one year (when I was in Boronia) and the flower stems never extended so the blooms practically sat on the potting mix!

cheers  
fermi



*Narcissus 'Erlicheer'*



*Trumpet Daffodil...or is it?*





## EUROPEAN WASP CONTROL

Spring is the time to catch the QUEEN wasp before she makes a nest using a simple environmentally friendly method. Use a 1.25 L soft drink bottle with 3, 10mm holes, approx. 150mm from bottom of bottle.

Make up a solution 8 tablespoons of honey in hot water with a 2 teaspoons pure vanilla essence Queen red label 35% alcohol this will do 4-5 traps, divide bait between traps, top up with water to just below holes replace cap and hang in a sunny spot in garden, near water. Fruit trees with curly leaf is a good place, bait will take a week or so to activate. Shake every few days to let bait dribble out .keep in place until January. Strain out when full, reuse and top up bait with water. Replace bait every 4-5 weeks

further info Laurie Nicoll  
laurie@shamp.com.au



## SUPPORT YOUR ADVERTISERS

### 'THE BRIDGE CONNECTION COMMUNITY NEWSPAPER'

...is **supported** by **local businesses**

and it is important, in return

for the community to **support them**.

For rural regions to succeed in business they need the 'locals' to keep them viable by conducting business in our township. So! next time you need something for a job that you are working on... look to the

**'Bridge Connection'** and give

a **LOCAL BUSINESS** a try.

**BUY LOCAL  
WHERE YOU  
ARE ABLE TO.**

**SUPPORT THE TOWN THAT  
SUPPORTS YOU... THANK YOU!**



To advertise in the 'Bridge Connection'  
please contact the Editor

Regina Bennett on: **0437 514 223** OR email  
**bridgeconnection.editor@gmail.com**



**creative  
designs  
for your  
business**

logos menus flyers posters  
invitations brochures magazines  
business cards advertisements  
letterheads with compliment slips  
full business imaging

lyn ingles | graphic designer  
blupen@bigpond.com  
0429 911 980

Proudly Sponsoring  
assistance to the 'Bridge Connection'



## Quote of the month:

What is a weed? A weed is a plant whose virtues have not yet been discovered.

**Ralph Waldo Emerson**

Proudly supporting Bridge Connection



## Desperate pleas for help to deliver food, medicine in Shepparton must be answered

Workforce resources must be delivered to supermarkets, green grocers and pharmacists in Shepparton to fix long delays for food, medicine and other essential goods. With about 20,000 local people – in a population of 65,000 – estimated to be in isolation due to the Shepparton outbreak, it's left a massive gap in the workforce available to meet basic daily needs and keep the community moving. Many local schools have been named Tier 1 sites, meaning thousands of students and their entire family are locked in strict 14-day isolation.

Deputy Leader of The Nationals Steph Ryan said the skeleton workforce couldn't cope with demand from the tens of thousands of people who can't leave their home, but need desperate access to medicine, food and other essential supplies.

"Everyone wants to do the right thing, but the panic of not being able to treat sick family members or put food on the table is a big risk to people breaking isolation," Ms Ryan said. "Businesses are being forced to close or dramatically reduce operations because so much of Shepparton's essential workforce is in two weeks' isolation."

Ms Ryan called on the Andrews Government to urgently deliver support, including using the ADF to fill critical workforce shortages.

"The Andrews Labor Government must urgently step in to make sure local people's basic needs are met and that the community keeps moving," Ms Ryan said.

"ADF personnel should be directed where they're needed most – to pack and deliver food, medicine and other essential supplies like nappies or baby formula.

"Rapid testing should be introduced, particularly for freight drivers to keep the supply chain moving and to ensure locals can access the essential items they need, when they need them."

Ms Ryan said returning results for Tier 2 contacts – those who must isolate until they get a negative result – should be prioritised so people can get back to work sooner.

"It's deeply concerning that 18 months into this pandemic, Daniel Andrews still doesn't have a plan to support regional communities through an outbreak," Ms Ryan said.

"Daniel Andrews is demanding people stick to his rules, but failing to making sure people can get the food and medicine they need only adds to the pressure on families in a community at breaking point."



Federal Member for Bendigo

**LISA CHESTERS MP**

PO Box 338 Bendigo 3552  
Cnr Williamson & Myers Sts, Bendigo 3550

T: 034 5443 9055 • F 03 5443 9736

E: Lisa.Chesters.MP@aph.gov.au

@LMChesters • /LisaChestersBendigo



## WOMEN'S SPORTING FACILITIES PETITION

This petition of concerned supporters of women's sport in central Victoria draws to the attention of the House the need for the Federal Government to invest in central Victorian sports clubs. There is a widespread need to improve amenities for women in central Victorian sports clubs. Facilities for women at central Victorian premier sporting venues have been labelled "primitive", and the lack of suitable change room facilities and the poor state of the toilets has forced women to get changed behind trees and in cars. This is unacceptable and urgent action is needed.

We therefore ask the House to call on the Government to:

- Show leadership and bring together Local, State and Federal governments to work together to find a quick solution to this crisis

- Call on the Government to at least match the Victoria State Government's Female Friendly Facilities grants to build new and upgrade existing, outdated change facilities at sports clubs around the state that cater for female sport, with a focus on promoting female and family-friendly environments.

- Do all it can to support women in sport in central and regional Victoria

[https://www.lisachesters.org/women\\_s\\_sporting\\_facilities\\_petition](https://www.lisachesters.org/women_s_sporting_facilities_petition)



Craig Dill's Photography

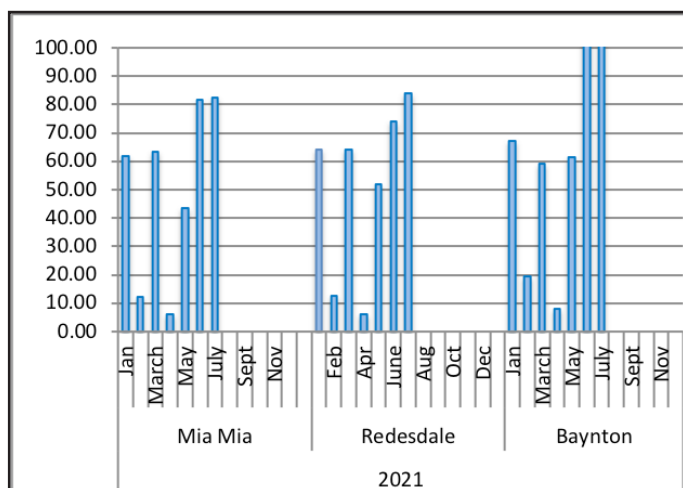
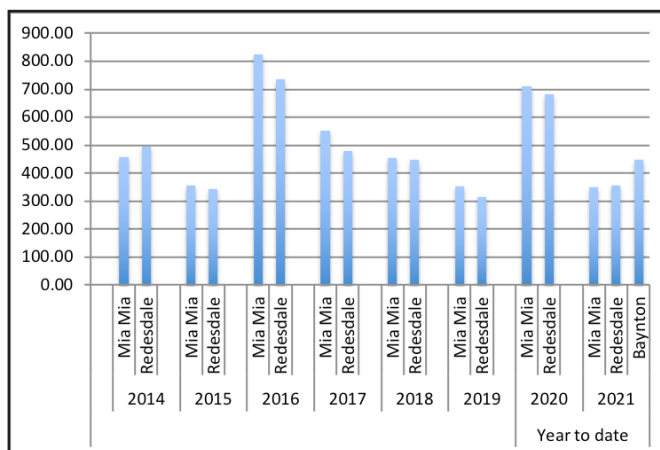
Redesdale  
/ Mia Mia

# Rainfall



The average yearly rainfall for **Redesdale** is about 601mms.

Thank you to **Helen Bennett** for the  
**Mia Mia** readings & **Belinda Ryan** for  
**Baynton** readings



## July Rain Fall

**Redesdale 84.00mm Year to date 356.80mm**

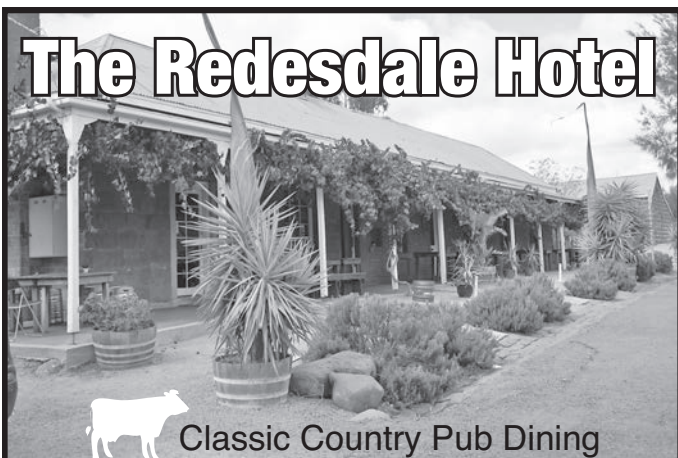
**Mia Mia 82.25mm Year to date 351.50mm**

**Baynton 107.2mm Year to date 447.8mm**

## Year Totals for Previous Years

2016	Mia Mia	826.00
	Redesdale	735.40
2017	Mia Mia	551.75
	Redesdale	479.60
2018	Mia Mia	455.00
	Redesdale	448.40
2019	Mia Mia	352.00
	Redesdale	315.00
2020	Mia Mia	711.25
	Redesdale	682.85

## The Redesdale Hotel



Classic Country Pub Dining

**For bookings  
please call (03) 4405 0601**

Monday - Closed  
Tuesday - Closed  
Wed to Sun • Lunch 12noon - 2.30pm  
• Dinner 6pm - 8.30pm

The Redesdale Hotel  
2640 Heathcote-kyneton Road  
Redesdale, Vic, 3444

info@theredesdalehotel.com.au



The Redesdale Hotel

redesdalehotel



**www.theredesdalehotel.com.au**

Need to advertise your **business locally?**

Support the

## 'Bridge Connection'

it is a great way to let the community  
know you are **open for business.**

For more information turn to **page 3**  
for advertising rates or for more information phone

**Editor - Regina Bennett 5425 5402**

**'Bridge Connection' Community Newspaper**



# LOCAL REDESDALE / MIA MIA - CONTACT LIST

<https://www.redesdale.net>

## FIRE REPORT A FIRE 000

**VIC BUSHFIRE INFO LINE  
1800 226 226**

### REDESDALE FIRE BRIGADE

- Captain Paul Atkins 0409 141 215
- Secretary Geoff Thomas 0429 143 490



### MIA MIA FIRE BRIGADE

- Captain Calvin Millard 0409 979 037 A/H: 9744 6745
- Mia Mia Fire Brigade Secretary - Steve Cadasch 5425 5548

### LOCAL ORGANISATIONS

#### BRIDGE CONNECTION MAGAZINE

Editors: **Regina Bennett** 0437 514 223

Bridge Connection President - Gloria Pocock

Bridge Connection Treasurer - Marissa Leahy

#### MIA MIA MESSENGER Enquiries 5425 5565

Mia Mia Hall Committee - Wendy Hulls 5425 5590

Mia Mia Mec. Inst. Secretary - Wendy Hulls 5425 5590

Mia Mia Mec. Inst. President - Anthony Ryan 5425 5578

Mia Mia Reserve Comm. Secretary - Anthony Ryan 5425 5578

Mia Mia Reserve Comm. Chairperson - Grant Hulls 5425 5590

Otis Foundation 5444 1184

Redesdale and District Assoc. Inc - Lin Newton 0418 583 304

Redesdale Hall Committee - C. Boyd (Sec) 5425 3194

Redesdale Hall Hire - C. Boyd (Sec) 5425 3194

Redesdale Rec. Res. Cttee - Craig Newton 0448 021 544

email: 3444reserve@gmail.com

#### Suicide Bereavement Service - 'Standby' 0439 173 310

Tennis Club - Linda Newnham 0400 554 716

### TOWNSHIP BUSINESSES

Redesdale Hotel - Beth & Garth 03 4405 0601

Redesdale General Store 5425 3154

Café Budburst - Sarah 0407 551 578

The House Gallery - Joyce 0408 154 315

### COUNCILLORS

#### City of Greater Bendigo - Eppalock Ward

Matthew Evans 0437 867 028

Marg O'Rourke 0429 061 096

Greg Penna 0429 721 958

### POLITICIANS

Federal Member for Bendigo - Lisa Chesters (Labor) 5443 9055

State Member for Euroa - Steph Ryan (Nationals) 5762 210

### SCHOOLS

Redesdale Mia Mia Primary School 5425 3155

Kyneton High School 5421 1100

### HEALTH SERVICES

Bendigo Health 5454 6000

Heathcote Health 5431 0900

Kyneton Health 5422 9900

Royal Flying Doctor Community Transport  
(Heathcote) 5431 0900

### TOURIST INFORMATION CENTRES

Heathcote Visitor Centre 5433 3121

Bendigo Visitor Centre 1800 813 153

Kyneton Visitor Centre 1800 244 711

### REGULAR ADVERTISERS

Connolly Glass 0428 535 101

Lisa Chesters 5443 9055

The Optometrist 4411 6802

Palmer Steven & Rennick 5422 6500

Redesdale Hotel 4405 0601

Redesdale General Store 5425 3154

Fertiliser Spreading Service 0412 144 936  
or 0427 546 586

Café Budburst 0407 551 578

Steph Ryan 5762 2100

Tucks Windows 5446 8855

William Farmer Funeral Directors 5441 5577

### ORGANISATIONS

**City of Greater Bendigo 5434 6000**

Macedon Ranges Shire 5422 0333

**Mitchell Shire Council 5734 6200**

Mount Alexander Shire 5471 1700

**POWERCOR 132 412**

### SPONSORS *Without their support our community would not thrive - Thank you!*

blue pencil publishing 0429 911 980

Elphinstone Post Office & Store 03 5473 3200

Heathcote Community Bank 1300 236 344

Kyneton Copy Centre 03 5422 2400

Kyneton Veterinary Hospital 03 5422 1099

Redesdale General Store 03 5425 3154



**FOSTERVILLE GOLD MINE**

## **Fosterville Gold Mine Community Grants Applications Now Open**

The Fosterville Gold Mine Community Grants program aims to support initiatives which actively contribute to the growth of our local communities both now and into the future.

**Applications close at 5pm on Monday 27th September**

Visit [fgmcommunity.com.au](http://fgmcommunity.com.au)

Email [FGMCommunityGrants@kl.gold](mailto:FGMCommunityGrants@kl.gold)

## KYNETON VETERINARY HOSPITAL



Send us a picture of your very special pet and a few words to describe him or her and why you love your pet so much.

Send to: [bridgeconnection.editor@gmail.com](mailto:bridgeconnection.editor@gmail.com)

A prize at the end of the year will be awarded for the best entry.



Lish and Rupert French Bulldog

This is Rupert, 14 week old French Bulldog.  
Rupert is super spoilt puppy

**KYNETON VETERINARY HOSPITAL**

Call us today 5422 1099

*'Where animal lovers heal'*

## OPTOMETRIST NOW OPEN IN HEATHCOTE

Open for appointments  
**TUESDAYS & FRIDAYS**  
Great frame range  
complete glasses from \$99



59 High Street Heathcote

For appointments  
please phone 4411 6802

**THE OPTOMETRIST  
HEATHCOTE**

## Palmer Stevens & Rennick

Barristers & Solicitors

Founded 1852



## Palmer Stevens & Rennick

provide advice to clients all over Australia.

- Powers of Attorney
- Wills and Estates
- Criminal Law
- Conveyancing
- Property Law
- Family Law
- Agribusiness Law
- Commercial Litigation
- Traffic Law and Toll Fines
- Appearing in Castlemaine Court
- Pre purchase advice for large Agribusiness Assets
- Compensation for Government Acquisitions



Mr Joseph Palmer  
Founder of  
Palmer Stevens & Rennick

8 Jennings Street, Kyneton

or P.O. Box 1, Kyneton Vic 3444

Phone: (03) 5422 6500 Fax: (03) 5422 3385

Email: [psr@psr.net.au](mailto:psr@psr.net.au)

A good life  
deserves the  
best farewell

 **WILLIAM  
FARMER**  
FUNERAL DIRECTORS

Andrew and Heather Hampton

151 McCrae Street Bendigo  
12 Victoria Street Eaglehawk

**P: 5441 5577**

[www.williamfarmer.com.au](http://www.williamfarmer.com.au)

*A tradition that continues...*