



On behalf of  
the Management  
& Members of the  
'Bridge Connection' Magazine  
we wish you a very  
Merry Christmas  
to our Communities  
of Redesdale and  
surrounding areas.



## Our Community Magazine - Important facts you should know.

Our Community Magazine the 'Bridge Connection' is a very important to our community and here is some information you should know....

### Facts:

- Printing costs \$1700 each Edition
- Dwindling Committee Members
- The limited amount of local printable content

So! the first question to you our community and already supporters is....

*Do you still want to have your community paper?*

If so, please let us know... also how you would potentially support it if you are not already an advertiser. On your advice we will make a decision on the future of the 'Bridge Connection' so please send your response in full to the [bridgeconnection.editor@gmail.com](mailto:bridgeconnection.editor@gmail.com) by **Saturday 5 February 2022** and your interest will surely noted in helping us come to a decision.

Dear 'Bridge Connection' readers,

Firstly it's nice to be out of lockdown and able to visit friends and family. It's been a quiet few months with no significant events happening in our local region. So sadly a lack of newsworthy stories and the closing of our local businesses together with the Covid shutdowns has put a rather large dent in our monthly news. The 'Bridge Connection' is a non-for-profit community enterprise, with all the work done by volunteers. We rely on the sponsorship and advertising to cover our printing costs.

The 'Bridge Connection' committee decided not to print an October, November issue due to the very large increase in printing. So this being the last edition for 2021, we as a committee need your feedback as our options for next year are, to go all online, limited printing, or perhaps even close down.

It would be very helpful to us if we got responses from you our readers on what you would like to have included.

Please, we urge you to send your thoughts by email to the address already displayed on this page, thank you.

We remain  
yours sincerely

**The 'Bridge Connection' Committee,**  
We wish you a very Merry Christmas  
and Happy and Healthy New Year 2022.

We're open 9am-5pm Monday to Friday or call us on  
(03) 5433 3115 to speak to a friendly staff member.

[heathcotenagambie.community](http://heathcotenagambie.community)

Community Bank  
Heathcote & District

**B** Bendigo Bank



# Congratulations

to **Garth, Beth and the team** of the **Redesdale Hotel**.



L-R: Garth and his long time friend Terry who is his right hand man in the Kitchen

Below: Front Bar - the 'Welcome Zone' for visiting patrons



**THE WELCOME ZONE**

ps:

...The 'Redesdale Hotel' is always looking for enthusiastic, front of house and kitchen hand staff, if you are interested give them a call.

Congratulations to Garth, Beth and the team of the Redesdale Hotel on being named by the Weekly Times Newspaper as among the top iconic and best bush pubs in Australia.

Throughout the pandemic 'Our Local,' has remained consistent in providing their service to our community.

We tend to take our Publican for granted so the 'Bridge Connection' decided to gather a little information on Garth Campbell.

**How did you start your Career as a chef?**

*"I came to Australia from New Zealand in 1980 and started as an apprentice chef at the Darwin Hotel in 1981."*

**Have you always been interested in cooking?**

*"Yes, ever since I was a small boy I only ever wanted to be a chef."*

**After Darwin where did you go?**

*"I stayed in Northern Australia and worked for the Sheraton Group of Hotels, including in Ayers Rock and Port Douglas. In 1988 it was onto Melbourne, first at the Skywards International Hotel, then the kitchen of Heidelberg Golf Course. Then later I stayed for 6 years at the Telegraph Hotel, Gisborne. University Meats was my next stop where I managed sales and worked with major catering companies."*

**So how did you come to be in Redesdale?**

*"Beth and I were coming home from Echuca and drove through Redesdale where we saw the For Sale sign on the hotel and with Beth's encouragement we made the call."*

**Was it a good decision?**

*"Oh yes! I just want to cook and since I have been working at Redesdale I have realized that running a business in the country is all about being part of the community, it's a great place"*

**Where do you see yourself in two years?**

*"Here."*

**So what is on the menu to celebrate no covid restrictions?**

*"This week we are making this fantastic Cassoulet and this paté is for the Tournedos Rossini later on."*

**Mmmm! when this country pub includes classic French dishes along with the best steaks, curries, fish dishes and many pub classics, I think to be rated amongst the top Australian Iconic Bush pubs is well deserved.**

**THE ICONIC REDESDALE PUB**



**THE WEEKLY TIMES**

**Named by the 'Weekly Times' newspaper as among the 'top iconic and best bush pubs' in Australia.**

## Editorial

Dear Readers

This is the last edition till March 2022.  
The Bridge Connection Committee wishes everyone a Merry Christmas and a safe Happy New Year.

Please Read and help us make a decision on our future all info is on the front page.

Till next year be safe.

[bridgeconnection.editor@gmail.com](mailto:bridgeconnection.editor@gmail.com)



Regina Bennett

**Regina Bennett.**

**Editor:** Regina Bennett

**Ph:** 0437514223

**e:** [bridgeconnection.editor@gmail.com](mailto:bridgeconnection.editor@gmail.com)

## BRIDGE CONNECTION COMMUNITY NEWSPAPER

### Advertising Rates/Sizes

Size	Height x Width	Price per issue	10 Editions
Business Card	55mm x 90mm	\$25	\$250
Quarter Page	130mm x 90mm	\$50	\$500
Half Page	130mm x 190mm	\$95	\$950
Full Page	270mm x 190mm	\$175	\$1,750

**Colour Advertisements plus 20%.**

**Please Note:  
COPY DEADLINES  
20TH OF EACH MONTH**

Please send editorial or advertising copy to:  
[bridgeconnection.editor@gmail.com](mailto:bridgeconnection.editor@gmail.com)  
or by post to **Regina Bennett 3465 Burke & Wills track Mia Mia 3444.**  
For other editorial enquiries, please phone **0437 514 223**

#### Bridge Connection Distribution

950 Copies printed and distributed to Redesdale Mia Mia Region, including Barfold, Baynton, Derrinal, Elphinstone, Glenhope, Kyneton, Langley, Metcalf, Sidonia and Sutton Grange

**Disclaimer:** The Bridge Connection Inc. Committee wishes to advise that the views or remarks expressed in this publication are not necessarily the views of the volunteer Bridge Connection Inc. editorial or production team and no service or endorsement is implied by the listing of Advertisers, sponsors or contributors. Although every effort is taken in reproducing and printing advertisements correctly, we take no responsibility for errors.

### Management Committee

**President :** Gloria Pocock

**Secretary:** Regina Bennett (03) 5425 5402  
[bridgeconnection.secretary@gmail.com](mailto:bridgeconnection.secretary@gmail.com)

**Treasurer:** Marisa Leahy 0415 384 217

**Magazine:** Regina Bennett - Editor 0437 514 223

## Bridge Connection

### - Mission Statement -

The mission of **Bridge Connection** is to bring people together by:

1. Providing information about local issues, goals and events, and to celebrate local achievements,
  2. Encouraging economic growth in the area
  3. Fostering geographic identity, and
  4. Providing a platform for public debate
- Bridge Connection is published by local people who volunteer, for local people as a **free paper** and on line at **redesdale.net** and via **face-book**



[facebook.comRedesdaleMiaMia](https://facebook.com/RedesdaleMiaMia)



## General Store Liquor Store

AUSTRALIA  
**POST**

**Fully Electronic  
Postage Service**

**Come in for some  
great tasting...**



**Newspapers  
& Groceries**

**Banking  
Facilities**



**Full alcohol  
licence and  
bottle shop  
with local  
wines.**



**Takeaway  
Food Service**



**Fuel  
& Oil**



**Hours:**

**Monday to Friday 7am to 9pm  
Saturday & Sunday 8am to 9pm**

**RJ REDESDALE**

**Phone (03) 5425 3154  
2609 Main Road, Redesdale**



# Community Bank Heathcote & District's Rural Scholarship program

Community Bank celebrates International Day of Rural Women

October marked International Day of Rural Women and to celebrate Community Bank Heathcote & District checked in with their 2020 Rural Scholarship recipient Tianna Stables.

Tianna was awarded the scholarship by the Community Bank at the beginning of last year and used the funds towards completing her Certificate 3 in Agriculture at Bendigo TAFE.

Tianna has since completed her TAFE course and gained work as a farmhand and polo groom for the Victorian season. "Once the Victorian season ended I was lucky enough to get a job travelling NSW and QLD doing the polo seasons there. I got to travel heaps and meet lots of new people! I'm now back in Victoria at my original job doing cattle and polo again." Tianna said.

Tianna said that her course prepared her and strengthened the skills she already had in the world of agriculture.

"This made my job significantly easier, as well as having an amazing Manager at my work who has always taught me along the way.

My course has also enabled me to bring up new ways of dealing with situations within my workplace, bringing more modern solutions to the table".

Tianna is proud to celebrate International Day of Rural Women.

"Being a woman in the agricultural industry is hard, but also so rewarding. People will doubt you, your strength and ability to work. But you also earn huge amounts of respect from those people when you prove them wrong!" she said.

Community Bank Heathcote & District's Rural Scholarship program is run annually and applications open in January each year. For more information visit [www.heathcotenagambie.community](http://www.heathcotenagambie.community)



Tianna is second from the right, celebrates a win'.





# REDESDALE CFA

Fires, weather and how a summer pans out are all unpredictable and something we have no control over. We have had back to back summers of fairly settled conditions, resulting in very few storm fronts and few lightning strikes. From October onwards we are forecast to go into a La Nina phase. This could mean more changeable weather and the potential for more lightning strikes. This is something we don't know for sure and have no control over.

The most common cause of a fire starting is something we do have control over, slasher and mower fires. Through October and into early November is the time to get stuck into mowing, slashing and general cleaning up. If your plan is to use the Christmas break to do these chores, it is too late. The reason we often turn out to mower fires is simply because the grass is dry. Sometimes people do the right thing and have some water on hand by the time they realise they have a problem, the fire has taken hold.

Just a reminder of a few safety precautions when mowing.

- only mow green grass where possible
- avoid the hottest, driest part of the day
- have at least 10 litres of water on hand
- pick the right day ( cool, still or after rain?)
- and have a Spotter. Someone to watch and operate extinguisher if needed.

The brigade will once again be running the Best Prepared Property award, with a \$100 Bunnings voucher up for grabs. If you want to nominate yourself or a neighbour please contact any brigade member or myself for an inspection. Good luck.

## REDESDALE FIRE AWARENESS SESSION

The Redesdale CFA will be holding an information night to discuss how you can safely survive the upcoming fire season. Hear from, and get advice from, your local CFA members regarding property management and your fire plan while also learning about your local CFA volunteer service. This will be held on the Agnes Mudford Reserve at 5pm Saturday 4th December, winding up at 6 with complimentary wine and tapas. Should be a great community event and look forward to seeing you there.

**Andrew Campbell**  
Fire prevention officer.  
0428253104



## MIA Mia Cricket Club

What a great start to the 21/22 season 2 from 2

Then to finish off 2021

Two massive home games  
Sat dec 4 v Bendigo Strikers  
@ Mia Mia 1pm

Sat dec 11 v Emu Creek  
@ Mia Mia 1pm

## PARTY EQUIPMENT FOR HIRE

The following party equipment is available for **HIRE** from the **REDESDALE RECREATIONAL RESERVE COMMITTEE (RRRC)**.



Commercial sized steel roaster	\$120 per weekend
Large marquee, 3m x 6m	\$225 per weekend
Collapsible marquee, 3m x 3m	\$80 per weekend
Tables, 1.8m x 1m	\$8 each per weekend
Table cloths, white	\$10 each
Chairs, white plastic	\$2.50 each
Umbrellas, charcoal	\$5 each

A bond will be required on most equipment for hire.  
All proceeds go to the RRRC.

For more information or to make a booking,  
please email: [3444reserve@gmail.com](mailto:3444reserve@gmail.com)



You are warmly invited to

# BARFOLD

## COMMUNITY CHURCH

Meets 10.00 am

2nd – 5th Sundays each month

followed by morning tea

at Barfold Union Church

Heathcote-Kyneton Rd, Barfold

Contact; Leigh 0425812786



## UNITING CHURCH

10am Start

Morning Tea is shared before each service at 9.45



**December 12th Mia Mia 10am**

**December 19th Carol Service**

**Sutton Grange at 7pm Supper to follow.**

Due to the Coronavirus (COVID-19)  
Please see below website for Changes to services

[www.macedonrangesunitingchurch.org.au](http://www.macedonrangesunitingchurch.org.au)

For more information go to -

[www.macedonrangesunitingchurch.org.au](http://www.macedonrangesunitingchurch.org.au)

### CATHOLIC CHURCH

**Redesdale** 2nd Sunday of each month 11am

## COMMUNITY DEFIBRILLATOR

Located on the side of the Redesdale fire station  
Access code is 3444 (Redesdale post code)

### DEFIBRILLATOR

The Community owned defibrillator  
is now accessible to all  
community members.

It is situated on the  
outside wall of the CFA building



Turn your house  
**into a home**  
with Tucks  
locally made products



- Aluminium and Timber Windows
- Window Replacements • Security Doors
- Shower Screens • Wardrobe Doors

We are in your area regularly  
and offer a **FREE** measure  
and quote service.

*We can offer supply and install prices.*



**Tucks  
Windows  
BENDIGO**

Celebrating 43 Years  
providing top quality  
products and  
professional  
friendly service.

P: 03 5446 8855 E: [quotes@tuckswindows.com.au](mailto:quotes@tuckswindows.com.au)

[www.tuckswindows.com.au](http://www.tuckswindows.com.au)



## REDESDALE RECREATION RESERVE

Notice is given of a **PUBLIC MEETING** to be held at the

**Reserve Pavilion on Tuesday 8th  
March 2022 commencing at 6pm.**

The purpose of the meeting is to nominate no less than three (3) or more than nine (9) persons as the Committee of Management for the (Redesdale Recreation Reserve for a term of three years. The current committee's term will expire on 12th March 2022. All positions will be declared open and nominations will be accepted prior to or on the night.

Nominations from women, Aboriginal people, people with disabilities, young people and people from culturally diverse backgrounds are encouraged.

Further information, nomination forms and nominee declaration forms may be obtained by contacting your local Department of Environment, Land, Water and Planning office or at the meeting.

For further enquiries please contact the Secretary,  
**Craig Newton E: 3444reserve@gmail.com.**



**creative  
designs  
for your  
business**

logos menus flyers posters  
invitations brochures magazines  
business cards advertisements  
letterheads with compliment slips  
full business imaging

lyn ingles | graphic designer  
blupen@bigpond.com  
0429 911 980

Proudly Sponsoring  
assistance to the 'Bridge Connection'



## Elphinstone Post Office & General Store

*'In the heart of the  
Elphinstone community'*



- Newspapers/ Magazines
- Origin Gas Bottles
- Bread • Milk & Groceries
- Postage Services

*'The General Store where  
community meets business.'*

**Gill & Dave (03) 5473 3200  
9 Bateman Street, Elphinstone**

## Proudly printed in Kyneton

Castlemaine, Kyneton & Gisborne  
**CopyCentre**  
Printing together for our community

Design & Pre-press  
Plan Scanning, Finishing Services.

*Not just a Copy Centre...  
we are so much more.*



**www.windarring.org.au**

**58 Mollison Street  
Kyneton  
03 5422 2400**



Acting Principal: Andrew King

Phone: 5425 3155

Email: [redesdale.mia.mia.ps.ps@education.vic.gov.au](mailto:redesdale.mia.mia.ps.ps@education.vic.gov.au)

## Redesdale Mia Mia Primary School



### School News

### Respect, Resilience & Relationships



#### Outdoor Learning Area

Over the past few weeks, we have been fortunate enough to design an outdoor learning area. This area will be of great benefit to us and the community in the future to allow us to teach outdoors and engage students in the natural environment. The students thoroughly enjoyed the change of scenery for our writing lesson today.

It seems like a fair amount of time has passed since our last write up, need less to say we have been very busy here at school. In particular, the students have been out with Lydia, helping complete some scientific research about bees. They also were able to help do some research on platypus DNA in the local waterways.

Our Grade 5/6 students went off to Anglesea camp and more recently, the students have been helping around the school yard by shovelling mulch. In the classroom, we have finished off our recount unit, with the students' making videos with the puppets they made in Indonesian. They worked to create fictional recounts about their trip around Australia or Victoria, these will be shown at the end of the year.

Next week we are off to Boomerang Camp at near Daylesford. We are very lucky that the whole school is going and we are staying overnight. We are looking forward to riding the horses, building huts and sitting around the fire.

We are finishing off the year with a bang! We have our concert and graduation ceremony that will take place at the Redesdale Hall as well as our school photos. As we wind down the year, we still have our Prep transition days occurring, which is very exciting. If you are interested in coming to school for a tour, please contact the school as soon as possible.





## Become a Friend of the Stone Reserve



"As you may have heard, there are plans to develop a "Stone Reserve Heritage Walk" from Redesdale, through Stone Reserve and to a look out point over the Campaspe and the Redesdale Bridge. The area has been surveyed and by the end of July a site plan and a clean –up of the reserve will have been completed.

We are looking to invite interested people to register their interest in the project and become a "Friend of Stone Reserve" (FOSR). There is no fee involved in registering your interest and becoming a friend. If you become a friend, you may want to give your time or expertise to the project – or you may want to volunteer on planting or clean-up days. It would be a great way of getting to know your local neighbours.

If you would like more information about the project, please go to the [www.redesdale.net](http://www.redesdale.net) website and look for the Stone Reserve Strategic Plan.

To register your interest, please email us at:

[stonereserveredesdale@gmail.com](mailto:stonereserveredesdale@gmail.com)  
or ring or text to 0407 116 899"



## SUPPORT YOUR ADVERTISERS

### 'THE BRIDGE CONNECTION' COMMUNITY NEWSPAPER'

...is **supported** by **local businesses**

and it is important, in return

for the community to **support them**.

For rural regions to succeed in business they need the 'locals' to keep them viable by conducting business in our township. So! next time you need something for a job that you are working on... look to the

**'Bridge Connection'** and give a **LOCAL BUSINESS** a try.

**BUY LOCAL  
WHERE YOU  
ARE ABLE TO.**

**SUPPORT THE TOWN THAT  
SUPPORTS YOU... THANK YOU!**



To advertise in the **'Bridge Connection'**  
please contact the Editor

Regina Bennett on: **0437 514 223** OR email  
[bridgeconnection.editor@gmail.com](mailto:bridgeconnection.editor@gmail.com)



**creative  
designs  
for your  
business**

logos menus flyers posters  
invitations brochures magazines  
business cards advertisements  
letterheads with compliment slips  
full business imaging

lyn ingles | graphic designer  
[blupen@bigpond.com](mailto:blupen@bigpond.com)  
0429 911 980

Proudly Sponsoring  
assistance to the **'Bridge Connection'**



# Campaspe River Update

Great to see a good flow of water under the bridge in recent months.

As of Nov 20 there was still no news from Coliban Water or the EPA regarding the licence review. You can check for news at [www.coliban.com.au](http://www.coliban.com.au) BNR water has continued to be released to the river from the Kyneton WRP, with the river flow continuing to be measured at Redesdale. This includes much run off and of course the considerable flow from Pipers Creek, therefore distorting the 1:5 ratio (WRP water : river flow) the present licence dictates. We remain hopeful that the licence review will do a much better job of protecting the river with the use of the gauge upstream of the outlet point for flow data. Any change in the ratio and the continued use of medians is still of grave concern.



The Coliban Water Annual Report 2021, which was tabled on Nov 2<sup>nd</sup> and is available on their website, mentions that when they were found guilty and convicted of charges by the Kyneton Magistrate Court relating to EPA charges following non-compliant discharges in 2019, sentencing included a contribution to an environmental project on Snipes Creek. At this stage initial planning by Biolinks Alliance is underway for a section of the creek that runs between the KWRP and the Campaspe. It aims to regenerate the area, utilising a variety of techniques, in order to upgrade the water quality that feeds into the river. The sooner plans can become a reality the better.

The citizen scientists who took part in the Great Australian Platypus Search, the groundbreaking project that will map platypus populations across Australia, had to submit their sampling by Nov 30<sup>th</sup>. We look forward to seeing the results. [www.thegreataustralianplatypussearch.org](http://www.thegreataustralianplatypussearch.org).

The Goulburn-Murray Water warning for blue-green algae for Lake Eppalock remained lifted on Nov 17<sup>th</sup>. Forewarned is forearmed, so to ensure the health of water users, humans and animals alike, please check for updates regularly throughout the summer months at [www.g-mwater.com.au/news/bga](http://www.g-mwater.com.au/news/bga)

## ...and Anecdotes.

NB This antic evidently ended safely but please remember never to enter flood waters!

*One summer in the early 1970s when we were teenagers, I remember the river was up and flowing rapidly. We watched with bated breath as an intrepid adventurer climbed into his bright yellow inflatable dingy, clinging to the bright yellow plastic oar, and was quickly whisked away from the bank. The first stroke of the oar broke it on a rock, leaving a sharp pointed edge, which the next stroke put through the side of the dingy!!! So after travelling only a distance of 10 metres or so, the voyage was ended, the vessel ran aground, and he had to abandon ship! Luckily the dingy was only half deflated, unlike the sailor's ego! KM*

We would be very interested to hear your stories and see your photos of our Campaspe. Things like the creatures you've seen, what fish you've caught, the work you've done, the fun you've had on, in and around the river. How high you've seen it rise and how long a stretch you've seen it dry. If you'd like to share your experiences, please include any dates and label them Campaspe Anecdotes. Email to [bridgeconnection.editor@gmail.com](mailto:bridgeconnection.editor@gmail.com) or [lindysown@gmail.com](mailto:lindysown@gmail.com) Please send photos as separate files.



# Redesdale Recreation Reserve Committee Report

## Reserve Pavilion Open for Community Use

You may have noticed that the pavilion has been renovated to provide a smaller inside space, ready for use by the community.

The inside of the pavilion is now lined and insulated, is airconditioned (thanks to a local donation), lighting has been installed (thanks Steve Atkins), blinds are installed on all windows (thank you RADA committee) and thanks to the City of Greater Bendigo we have NBN Broadband Wi-Fi in and around the pavilion.

The RRRC is also working on the new deck in front of the Pavilion. This work is nearly complete (waiting on some steps) and thanks to a recent Government grant we will have shade sails over the deck so we can all enjoy the outside in the warmer sunny seasons.

We now have a Certificate of Occupancy for the inside of the pavilion, and we are looking for innovative ideas on best utilising this space and equipment we now have available to the community.

So, if you wish to run health classes inside, meetings, hold PC training or other computer related activities please reach out the RRRC Secretary (3444reserve@gmail.com) and we will endeavour to help facilitate use of this new addition to the Reserve.

Also, reminder that the Wi-Fi is operational and can be used even if outside the pavilion building. Range is reasonable around the building and is free. No password is required.

Regards  
RRRC



## REDESDALE RECREATION RESERVE

Notice is given of a **PUBLIC MEETING** to be held at the

**Reserve Pavilion on Tuesday 8th  
March 2022 commencing at 6pm.**

The purpose of the meeting is to nominate no less than three (3) or more than nine (9) persons as the Committee of Management for the (Redesdale Recreation Reserve for a term of three years. The current committee's term will expire on 12th March 2022. All positions will be declared open and nominations will be accepted prior to or on the night.


Nominations from women, Aboriginal people, people with disabilities, young people and people from culturally diverse backgrounds are encouraged.

Further information, nomination forms and nominee declaration forms may be obtained by contacting your local Department of Environment, Land, Water and Planning office or at the meeting.

For further enquiries please contact the Secretary,  
**Craig Newton E: 3444reserve@gmail.com.**



**Free Wi-Fi  
at Redesdale  
Pavilion**

Proudly brought to you by  **CITY OF GREATER  
BENDIGO**

# The Redesdale Hotel



Classic Country Pub Dining

**For bookings  
please call (03) 4405 0601**

Monday - Closed

Tuesday - Closed

Wed to Sun • Lunch 12noon - 2.30pm

• Dinner 6pm - 8.30pm

The Redesdale Hotel  
2640 Heathcote-kyneton Road  
Redesdale, Vic, 3444

info@theredesdalehotel.com.au



The Redesdale Hotel

redesdalehotel



**www.theredesdalehotel.com.au**

Support your **community newspaper** the

## 'Bridge Connection'

who is supporting **your community**.

Visit: **www.redesdale.net**

**district, events, businesses and news.**

For more information turn to **page 3**

for advertising rates or call and chat to

Editor - **Regina Bennett 5425 5402.**

**'Bridge Connection' Community Newspaper**

Need to advertise your **business locally?**

Support the

## 'Bridge Connection'

it is a great way to let the community  
know you are **open for business.**

For more information turn to **page 3**

for advertising rates or for more information phone

Editor - **Regina Bennett 5425 5402**

**'Bridge Connection' Community Newspaper**



*We can spread any amount that you supply,  
usually off the ground via industrial loader.  
We can also get a bulk load and deliver  
to a number of smaller properties if required.*

## FERTILISER SPREADING SERVICE



**Contact  
for a quote**

Please contact

**Carl 0412 144 936**

or **David 0427 546 586**

**No job too small,  
no job too big,**

email: **carl@glendarling.com.au**

**119 Darlington Road Baynton VIC 3444**



**Quality supplier and installer of:**

- Farm Sheds - Work Shops
- Hay Sheds - Garages/Barns
- Quality RHS Frames
- All Australian Steel
- Shed Materials - purlins/  
sheeting also available

*Been Building sheds in Central  
Victoria for over 40 years*

**Come and visit us at 12 Bourke St Kyneton**

Mon- Fri 8 am to 4.30 pm, other times by appointment

**03 5422 6644 or info@cvsheds.com.au**

**www.cvsheds.com.au**





## RECIPE OF THE MONTH

62

### Grapefruit Marmalade



500g grapefruit

1000g water

1500g sugar

Juice of 1 lemon

Slice and dice the fruit as fine as possible

Place in a large bowl, add the water and

lemon juice and soak overnight

Cook the fruit and liquid for one hour till it is soft

Add sugar and stir until it has dissolved

Boil for a further hour.

Test for gel set

Place marmalade in cleaned jars and seal



*Marisa Leahy*

## Redesdale Hall



# FOR HIRE

Amenities are available for catering, meetings, weddings and club or family celebrations.

Please phone

**Carolyn (03) 5425 3194** for more information.

### Redesdale Hall Activities:

- 2nd Tuesday monthly, 1pm - Hall Comm. Meetings.
- 2nd Tuesday monthly, 7 pm - Rec. Reserve Meetings.

Redesdale

HOME HISTORY COMMUNITY BUSINESS BRIDGE CONNECTION LOCAL THINGS TO DO EXPLORE THE REGION



## Visit Redesdale Website

Welcome to Redesdale.

Redesdale residents who are active in their community, working together to make their town a better place to live and visit. They are the heart of the community, bringing people of all ages together and making it a better place to live and visit. They are the heart of the community, bringing people of all ages together and making it a better place to live and visit.

Calendar

Upcoming Events

## www.redesdale.net

## PARTY EQUIPMENT FOR HIRE

The following party equipment is available for **HIRE** from the **REDESDALE RECREATIONAL RESERVE COMMITTEE (RRRC)**.



Commercial sized steel roaster	\$120 per weekend
Large marquee, 3m x 6m	\$225 per weekend
Collapsible marquee, 3m x 3m	\$80 per weekend
Tables, 1.8m x 1m	\$8 each per weekend
Table cloths, white	\$10 each
Chairs, white plastic	\$2.50 each
Umbrellas, charcoal	\$5 each

A bond will be required on most equipment for hire.

All proceeds go to the **RRRC**.

For more information or to make a booking, please email: **3444reserve@gmail.com**

## Redesdale Ramblings

Pre-Summer in Central Victoria

This time of year is the “breather” between the spring floral onslaught and the abundance of summer. At least that’s the impression you’d get by reading the general garden literature. English gardens burgeon in summer with long borders full of colourful perennials which relish their rainy weather. In our area however summer is the time of drought and heat and we are best to allow the garden to slumber. Except for the vegies of course! And even then it depends on whether or not you have enough water to spare.

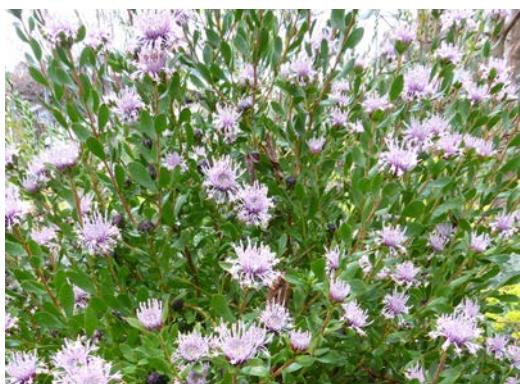
If anything we should be looking to similar areas in the Mediterranean which have a climate like ours. Hot summers are ideal for the ripening of figs, pomegranates and olives.

Lavender scents the air and herbs like rosemary, sage, thyme and oregano add flavour to home-cooking. Looking at pictures of towns in Greece you see the main colour is the painted houses with pots of “geraniums” (actually Zonal Pelargoniums bred from species from South Africa).

The Australian bush seems to be quieter in summer after the burst of growth over winter and spring. The honey-eaters appreciate non-native plants which flower in summer to provide them with nectar.

I’m not a proponent of purely “native” gardens. We grow a lot of Australian plants but the majority are “imports” from overseas. A garden consisting of purely endemic plants of the local area can be colourful and in tune with the climate. But there can be no roses, large-flowered clematis, marigolds, iris, cyclamen, tomatoes or zucchinis.

I believe you can combine local and exotic plants for a colourful and productive garden. One of the daffodil farms in the Dandenongs mentions that daffodils are ideal companions to native gardens because they want the same conditions – water in winter/spring and dry in summer. The main thing is to plant things that YOU like. It’s pointless growing rhubarb if you don’t eat the stuff (although it makes an attractive plant and it’s fascinating to watch the unfurling leaves from the tightly clenched buds). But aim to grow things that are suited to your conditions. If you are in a frost pocket avoid the early flowering blossoms that will be wiped out by frost. If you have no way of watering your garden don’t plant water-guzzling Hydrangeas. If you have no shade, forget about planting woodland plants.



*Isopogon cuneatus*

Having said that...we humans are contrary creatures. We want to grow things that aren’t suited to our climates. So we build glass-houses to protect frost-sensitive plants, shade-houses for those that can’t stand our heat, ponds and bog-gardens for water-lovers. We plant out “half-hardy” annuals after the risk of frost. A lot of adventurous gardeners plant things that don’t usually do well in their “zone” on the off chance that this season will be favourable and with luck they will come through to flower/fruit. An occasional loss is just an acceptable risk!

In our Redesdale garden we grow some Western Australian plants in a “sand-bed” created by dumping a truck-load of coarse sand on top of our “adobe” clay and using rocks to contain it. Eremophilas, Isopogon and other sand-belt natives from W.A. can be accommodated here on the East Coast. The tricky part is getting them established and we’ve found that planting in autumn allows the plants to get their roots down before summer. Planting tube-stock is better than larger plants because there is less potting-mix around the roots. With our soil the plant roots prefer to keep growing in the potting-mix rather than venture out into the puggy clay. When we first moved here we decided to move a young Liriodendron planted by the previous owner. When we dug it up we found that the tree roots were still growing in the potting-mix and had not grown out into the local soil! It’s why we prefer to plant bare-root trees in winter so there is no potting-mix around the roots. But it’s slow going trying to grow in our clay.

This winter we decided to try planting a few trees in a raised mound. We got Phil (Mr Don) to use his tractor to rip the soil and then pile up the soil (incorporating some composted material from a windrow of years of weedings and grass clippings) into a long curved berm. We’ve planted a number of Chinese Pistachio seedlings and will see how they go over the next few years.

We’ve had a fairly wet year so far and maybe this summer won’t be as vicious as previous ones but we won’t know till it arrives!

cheers

**fermi The Redesdale Rock Gardener**



*Eremophila hybrid in Sand Bed*





# RUNNY NOSE OR COVID?

The only way to be sure is with a test  
at the first sign of any symptom.

**ONLY A TEST  
CAN TELL**

**For testing locations,  
visit [CORONAVIRUS.vic.gov.au](https://coronavirus.vic.gov.au)**

Authorised by the Victorian Government, 1 Treasury Place, Melbourne



Proudly supporting Bridge Connection



## Labor's inaction threatens local timber jobs

Member for Euroa and Nationals deputy leader Steph Ryan has accused the Andrews Government of trying to shut Victoria's timber industry by stealth.

It comes as green activists today shut down most of Victoria's timber industry by seeking an interim court injunction over 29 logging coupes managed by VicForests, or 80 per cent of the area available for timber harvesting.

Cameron Webb, a logging contractor from Bonnie Doon, was forced out of work today along with the eight others in his team.

"We bend over backwards to ensure we adhere to the correct harvesting practices but I and everyone I work with are now without work because the government won't protect us," Mr Webb said.

Ms Ryan said VicForests didn't have the resources to keep fighting these claims, which meant harvesters and mills had no choice but to down tools.

"The conservation regulator has a responsibility to oversee the regulation of Victoria's public land and forests. She is armed to the back teeth with powers to investigate forestry operations.

"These cases, brought by groups opposed to sustainable native timber harvesting are founded on claims that VicForests has or will breach its regulatory obligations under the Code of Practice for Timber Production 2014.

"All of these cases are based on allegations relating to obligations that are subject to the regulatory powers of DELWP and OCR and in some instances, these cases include claims about matters that have already been investigated by the regulator."

Ms Ryan said in the past three years, not a single claim against VicForests had been upheld, but the organisation had spent \$4.8 million in legal costs defending itself and court injunctions continued to force people to down tools.

The Andrews Labor Government has already announced they will close the native timber industry in 2030.

"Forcing people to shut up shop early means the Andrews Government doesn't have to pay compensation to the state's timber workers when they close it permanently in 2030," Ms Ryan said.

"This has ramifications not only for the local people employed in these jobs, but also for secondary industries like building and horticulture which relies on the pallets

produced to get their products to market.

"The Andrews Government is actively trying to close the timber industry down while we face severe shortages of building supplies.

"Labor is pandering to activists who are unwilling to confront the basic questions of where Victoria will source the timber it needs when our industry closes. Victoria's timber industry keeps rural people employed who harvest timber under some of the strictest controls in the world.

"When it goes, we will be forced to import timber from overseas where we can't know how it has been harvested. Labor has betrayed blue collar workers in a desperate bid to win green votes."

Media contact: Steph Ryan – 5762 1600 or [steph.ryan@parliament.vic.gov.au](mailto:steph.ryan@parliament.vic.gov.au)

## CHESTERS URGES CENTRAL VICTORIANS TO HELP THOSE IN NEED THIS CHRISTMAS

Federal Member for Bendigo Lisa Chesters has today launched her 2021 Christmas Donation Drive.

"Once again, I'm encouraging locals to join me in supporting the Uniting Emergency Relief Assistance Centre in Kangaroo Flat," Chesters said.

"Since 2013 we have helped hundreds and hundreds of local families, and I believe we can do the same again."

The Emergency Relief Assistance Centres assist several thousand local people each year by providing food, financial assistance, advocacy, household goods and clothing.

Over the course of the pandemic, they have been there to provide support and food those who need it. In September alone, they provided food relief to 485 people, including over 150 children.

"For a number of Central Victorians, Christmas is a time of stress and a time when financial hardship and family breakdowns are felt most strongly," Chesters said.

"Bendigo is a generous community. We take care of our own. For so many of us, it has been a difficult 18 months. Together we can help make this Christmas special for a local family worse off than our own.

"We are fortunate to have a network of not-for-profit organisations who work especially hard at this time of year to alleviate some of the financial stress and loneliness felt by many in our local community. This is all the more important this year.



"I would like to encourage people to make a donation if they can," said Ms Chesters.

Each year, Uniting requests donations of unwrapped new toys (still in packaging) for ages birth to 16 and non-perishable or specialty Christmas food items.

"To remain COVID-safe, I ask that donations are dropped off at Uniting, on the corner of Church and Camp Streets in Kangaroo Flat," said Ms Chesters.

Kangaroo Flat Uniting is open Tuesdays from 9-3, Thursdays from 9-1 and Fridays from 9-3.

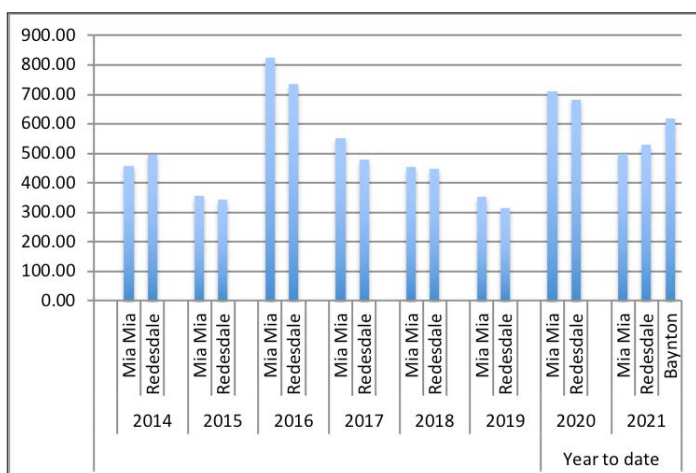
Redesdale  
/ Mia Mia

**Rainfall**



The average yearly rainfall for **Redesdale** is about 601mms.

Thank you to **Helen Bennett** for the  
**Mia Mia** readings & **Belinda Ryan** for  
**Baynton** readings



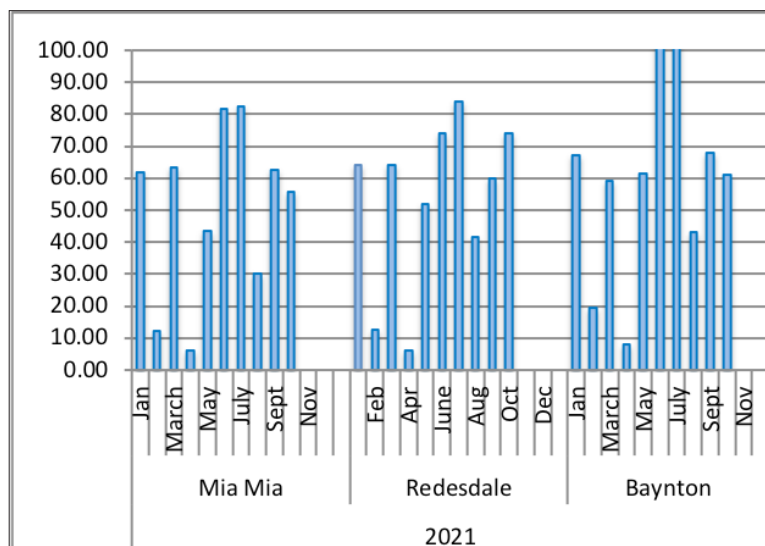
## October Rain Fall

**Redesdale 74.10mm Year to date 532.30mm**

**Mia Mia 55.75mm Year to date 500.25mm**

**Baynton 61.00mm Year to date 619.80mm**

## Year Totals for Previous Years



**2016** Mia Mia 826.00  
Redesdale 735.40

**2017** Mia Mia 551.75  
Redesdale 479.60

**2018** Mia Mia 455.00  
Redesdale 448.40

**2019** Mia Mia 352.00  
Redesdale 315.00

**2020** Mia Mia 711.25  
Redesdale 682.85

Need to advertise your **business locally?**

Support the

**'Bridge Connection'**

it is a great way to let the community know you are **open for business.**

For more information turn to **page 3** for advertising rates or for more information phone

Editor - **Regina Bennett 5425 5402**

**'Bridge Connection' Community Newspaper**

## Quote of the month:

If you want to see the sunshine,  
you have to weather the storm.

**Frank Lane.**

# LOCAL REDESDALE / MIA MIA - CONTACT LIST

<https://www.redesdale.net>

## FIRE REPORT A FIRE 000

**VIC BUSHFIRE INFO LINE  
1800 226 226**

### REDESDALE FIRE BRIGADE

- Captain Paul Atkins 0409 141 215
- Secretary Geoff Thomas 0429 143 490



### MIA MIA FIRE BRIGADE

- Captain Calvin Millard 0409 979 037 A/H: 9744 6745
- Mia Mia Fire Brigade Secretary - Steve Cadasch 5425 5548

### LOCAL ORGANISATIONS

#### BRIDGE CONNECTION MAGAZINE

Editors: **Regina Bennett** 0437 514 223

Bridge Connection President - Gloria Pocock

Bridge Connection Treasurer - Marissa Leahy

#### MIA MIA MESSENGER Enquiries 5425 5565

Mia Mia Hall Committee - Wendy Hulls 5425 5590

Mia Mia Mec. Inst. Secretary - Wendy Hulls 5425 5590

Mia Mia Mec. Inst. President - Anthony Ryan 5425 5578

Mia Mia Reserve Comm. Secretary - Anthony Ryan 5425 5578

Mia Mia Reserve Comm. Chairperson - Grant Hulls 5425 5590

Otis Foundation 5444 1184

Redesdale and District Assoc. Inc - Lin Newton 0418 583 304

Redesdale Hall Committee - C. Boyd (Sec) 5425 3194

Redesdale Hall Hire - C. Boyd (Sec) 5425 3194

Redesdale Rec. Res. Cttee - Craig Newton 0448 021 544

email: 3444reserve@gmail.com

#### Suicide Bereavement Service - 'Standby' 0439 173 310

Tennis Club - Linda Newnham 0400 554 716

### TOWNSHIP BUSINESSES

Redesdale Hotel - Beth & Garth 03 4405 0601

Redesdale General Store 5425 3154

Café Budburst - Sarah 0407 551 578

The House Gallery - Joyce 0408 154 315

### COUNCILLORS

#### City of Greater Bendigo - Eppalock Ward

Matthew Evans 0437 867 028

Marg O'Rourke 0429 061 096

Greg Penna 0429 721 958

### POLITICIANS

Federal Member for Bendigo - Lisa Chesters (Labor) 5443 9055

State Member for Euroa - Steph Ryan (Nationals) 5762 210

### SCHOOLS

Redesdale Mia Mia Primary School 5425 3155

Kyneton High School 5421 1100

### HEALTH SERVICES

Bendigo Health 5454 6000

Heathcote Health 5431 0900

Kyneton Health 5422 9900

Royal Flying Doctor Community Transport  
(Heathcote) 5431 0900

### TOURIST INFORMATION CENTRES

Heathcote Visitor Centre 5433 3121

Bendigo Visitor Centre 1800 813 153

Kyneton Visitor Centre 1800 244 711

### REGULAR ADVERTISERS

Connolly Glass 0428 535 101

Lisa Chesters 5443 9055

The Optometrist 4411 6802

Palmer Steven & Rennick 5422 6500

Redesdale Hotel 4405 0601

Redesdale General Store 5425 3154

Fertiliser Spreading Service 0412 144 936  
or 0427 546 586

Café Budburst 0407 551 578

Steph Ryan 5762 2100

Tucks Windows 5446 8855

William Farmer Funeral Directors 5441 5577

### ORGANISATIONS

**City of Greater Bendigo 5434 6000**

Macedon Ranges Shire 5422 0333

**Mitchell Shire Council 5734 6200**

Mount Alexander Shire 5471 1700

**POWERCOR 132 412**

### SPONSORS *Without their support our community would not thrive - Thank you!*

blue pencil publishing 0429 911 980

Elphinstone Post Office & Store 03 5473 3200

Heathcote Community Bank 1300 236 344

Kyneton Copy Centre 03 5422 2400

Kyneton Veterinary Hospital 03 5422 1099


Redesdale General Store 03 5425 3154





## Did you know bushfires kill from **200m** away?


The flames of bushfires can reach temperatures of up to 1100°C. Long before the flames reach you, the wave of radiant heat can kill you from 200 metres away. Planning for bushfire is the only way to survive it.

How well do you know  fire?

Plan. Act. Survive. Go to [vic.gov.au/knowfire](http://vic.gov.au/knowfire)

Authorised by the Victorian Government, 1 Treasury Place, Melbourne







# LITTLE FREE


# LIBRARY

want to know more?  
visit  
[redesdale.net](http://redesdale.net)





**FREE LIBRARY**



Please **'donate'** by simply adding  
Books, Magazines and DVD's  
to the cabinet... *Thank you*

Located behind the  
Community Notice Board  
Inside the Redesdale Recreation Reserve  
**Redesdale Recreation Reserve,**  
2631 Kyneton - Redesdale Road  
Redesdale Vic 3444

## SUPPORT YOUR ADVERTISERS

### 'THE BRIDGE CONNECTION COMMUNITY NEWSPAPER'

...is **supported** by **local businesses**  
and it is important, in return  
for the community to **support them**.  
For rural regions to succeed in business  
they need the 'locals' to keep them viable  
by conducting business in our township.  
So! next time you need something for a job  
that you are working on... look to the  
**'Bridge Connection'** and give  
a **LOCAL BUSINESS** a try.

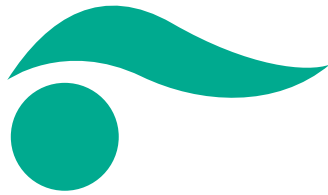
**SUPPORT THE TOWN THAT SUPPORTS YOU... THANK YOU!**

**BUY LOCAL WHERE YOU ARE ABLE TO.**





To advertise in the **'Bridge Connection'**  
please contact the Editor  
Regina Bennett on: **0437 514 223** OR email  
[bridgeconnection.editor@gmail.com](mailto:bridgeconnection.editor@gmail.com)



## KOSMAC & CLEMENS OPTOMETRISTS

Open for appointments

Tuesday, Wednesday & Friday

- Eye Testing
- Over 400 frames
- Contact Lenses



59 High Street Heathcote

For appointments  
please phone 4411 6802

### NOW IN HEATHCOTE

## Palmer Stevens & Rennick Barristers & Solicitors

Founded 1852

## Palmer Stevens & Rennick

provide advice to clients all over Australia.

- Powers of Attorney
- Wills and Estates
- Criminal Law
- Conveyancing
- Property Law
- Family Law
- Agribusiness Law
- Commercial Litigation
- Traffic Law and Toll Fines
- Appearing in Castlemaine Court
- Pre purchase advice for large Agribusiness Assets
- Compensation for Government Acquisitions



Mr Joseph Palmer  
Founder of  
Palmer Stevens & Rennick

8 Jennings Street, Kyneton

or P.O. Box 1, Kyneton Vic 3444

Phone: (03) 5422 6500 Fax: (03) 5422 3385

Email: [psr@psr.net.au](mailto:psr@psr.net.au)

## KYNETON VETERINARY HOSPITAL



Send us a picture of your very special pet and a few words to describe him or her and why you love your pet so much.

Send to: [bridgeconnection.editor@gmail.com](mailto:bridgeconnection.editor@gmail.com)

A prize at the end of the year will be awarded for the best entry.



Jorja & Bruce

This is Bruce 5year old Red Hen

**KYNETON VETERINARY HOSPITAL**  
Call us today 5422 1099

*'Where animal lovers heal'*

# A good life deserves the best farewell

 **WILLIAM  
FARMER**  
FUNERAL DIRECTORS

Andrew and Heather Hampton

151 McCrae Street Bendigo

12 Victoria Street Eaglehawk

**P: 5441 5577**

[www.williamfarmer.com.au](http://www.williamfarmer.com.au)

*A tradition that continues...*