



ISSUE NO. 126 MARCH 2022

For the Mia Mia- Redesdale Region including:

• Heathcote • Derrinal • Glenhope • Baynton • Sidonia • Barfold
 • Langley V Sutton Grange • Elphinstone • Kyneton • Metcalfe

BRIDGE CONNECTION COMMUNITY NEWSPAPER

Robert Arnold Jenkins

4 February 1942 - 29 January 2022



Mr Arnold Jenkins officiating at the Kyneton ANZAC Service in 2017 as he had for many years. Another facet to this most distinguished man.



Dear Arnold,

What a shock for us to hear you had left us suddenly, no fuss, just quietly went to sleep.

We, the Redesdale Hall Committee thank you for 30 odd years of bringing joy and laughter to thousands of people with the 'Redesdale Revellers'. You along with your good friend Lyn Brown aka 'Doris', were the original 'Grand Pooh Bahs' of the revellers and we feel sure that you two together will take your music and joy to the other side.

We will miss your big bear hugs and your ability to make everybody who met you feel joy in your presence.

Goodbye our dear friend,
God bless, sleep tight.



We're open 9am-5pm Monday to Friday or call us on
(03) 5433 3115 to speak to a friendly staff member.

heathcotenagambie.community

Community Bank
Heathcote & District

B Bendigo Bank

OPEN GARDEN
April 23-24 10am - 4:30pm

COLIBAN SPRINGS
866 Coliban Park Road
Redesdale 3444



A 5 acre natural, drought-tolerant garden with a number of picnic spots. More information on the Open Gardens Victoria website.

LITTLE FREE LIBRARY



Please 'donate' by simply adding
Books, Magazines and DVD's
to the cabinet... *Thank you*

Located behind the
Community Notice Board
Inside the Redesdale Recreation Reserve
Redesdale Recreation Reserve,
2631 Kyneton - Redesdale Road
Redesdale Vic 3444

NO ONE'S UNSINKABLE

To all those Unsinkable Guys out there –

You might think it's safe to have a few drinks around water, skip the lifejacket when you're out on the boat or go for a swim without checking the conditions.

But statistics prove that 4 out of 5 drownings are men.

Just remember that no one's unsinkable.

Q UNSINKABLE GUY

RETHINK
TAKING RISKS
AROUND
WATER



Editorial

Dear Readers

Welcome back for the first edition of 2022 we hope that Covid will stay away and we can get-back to enjoying some local activities again

If you know of anything happening in the region please let us know so we can let the community know.

The Redesdale Bush market has been cancelled. info page: 15.

bridgeconnection.editor@gmail.com



Regina Bennett

Regina Bennett.

Editor: Regina Bennett

Ph: 0437514223

e: bridgeconnection.editor@gmail.com

BRIDGE CONNECTION COMMUNITY NEWSPAPER

Advertising Rates/Sizes

Size	Height x Width	Price per issue	10 Editions
Business Card	55mm x 90mm	\$25	\$250
Quarter Page	130mm x 90mm	\$50	\$500
Half Page	130mm x 190mm	\$95	\$950
Full Page	270mm x 190mm	\$175	\$1,750

Colour Advertisements plus 20%.

Please send editorial or advertising copy to:
bridgeconnection.editor@gmail.com
or by post to **Regina Bennett 3465 Burke & Wills track Mia Mia 3444.**
For other editorial enquiries, please phone **0437 514 223**

Bridge Connection Distribution

950 Copies printed and distributed to Redesdale Mia Mia Region, including Barfold, Baynton, Derrinal, Elphinstone, Glenhope, Kyneton, Langley, Metcalf, Sidonia and Sutton Grange

Disclaimer: The Bridge Connection Inc. Committee wishes to advise that the views or remarks expressed in this publication are not necessarily the views of the volunteer Bridge Connection Inc. editorial or production team and no service or endorsement is implied by the listing of Advertisers, sponsors or contributors. Although every effort is taken in reproducing and printing advertisements correctly, we take no responsibility for errors.

Management Committee

President : Gloria Pocock

Secretary: Regina Bennett (03) 5425 5402
bridgeconnection.secretary@gmail.com

Treasurer: Marisa Leahy 0415 384 217

Magazine: Regina Bennett - Editor 0437 514 223

Bridge Connection

- Mission Statement -

The mission of **Bridge Connection** is to bring people together by:

1. Providing information about local issues, goals and events, and to celebrate local achievements,
 2. Encouraging economic growth in the area
 3. Fostering geographic identity, and
 4. Providing a platform for public debate
- Bridge Connection is published by local people who volunteer, for local people as a **free paper** and on line at **redesdale.net** and via **face-book**



[facebook.comRedesdaleMiaMia](https://facebook.com/RedesdaleMiaMia)



General Store Liquor Store

AUSTRALIA
POST

**Fully Electronic
Postage Service**

**Come in for some
great tasting...**



**Newspapers
& Groceries**

**Banking
Facilities**



**Full alcohol
licence and
bottle shop
with local
wines.**



**Takeaway
Food Service**



**Fuel
& Oil**



Hours:

**Monday to Friday 7am to 9pm
Saturday & Sunday 8am to 9pm**

RJ REDESDALE

**Phone (03) 5425 3154
2609 Main Road, Redesdale**

Loki's Lodge Animal Rescue Farm Fundraising Event

Sun, March 27, 2022
12:00 PM – 6:00 PM AEDT
Location

Loki's Lodge 171 Sheedys Lane
Derrinal, VIC 3523
Contact the organizer to request a refund.
Eventbrite's fee is nonrefundable.

Event description
Funraiser Concert for Loki's Lodge Animal Rescue Farm

Loki's Lodge is proud to invite you to a special, inaugural fundraising concert for our animal rescue farm on the afternoon of

Sunday March 27.

The concert will be one of the farm's major fundraising initiatives for the year and will feature four outstanding tribute / cabaret acts:

- * McNamarr Project - Saluting the Kings and Queens of Soul (5pm)
- * Eugene Hamilton & The Money - The Sultan of Smooth and his band croon tunes to groove to (3.30pm)
- * Shed Zeppelin III - Unplugged and Unleashed (2pm)

* Audrey Twins - Perform the Girlgroup hits of the 60s Cabaret Style (12.30pm)

All performed in a stunning natural amphitheatre at the farm on the banks of Lake Eppalock. The concert will be in 'picnic' style so **BYO rugs and portable chairs.**

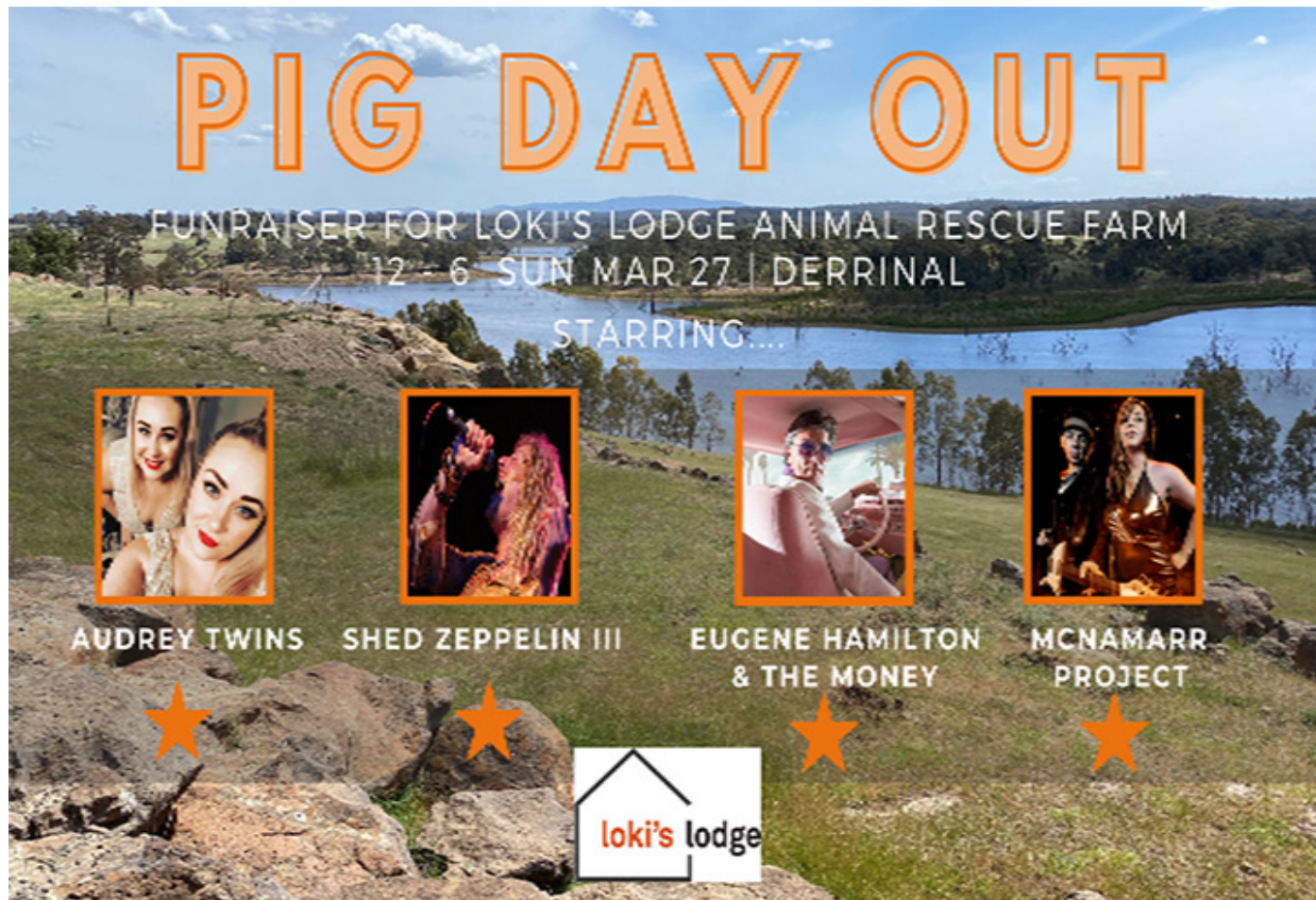
A selection of food and beverage (including alcohol) options will be available from vendor vans.

All our farm residents will be available to visit and pet during the day, making it a complete family event.

For those based in Melbourne, a special bus package can ferry you to and from the event, meaning you can relax and enjoy! It promises to be a highlight of the Bendigo region's entertainment calendar.

But tix wont last so book now!

Tickets available from
<https://www.eventbrite.com/d/australia--melbourne/pig-day-out/>



Even though it was declared an El Nina event through summer, the weather was fairly settled except for the odd lightning strike and thankfully not the damaging rain that was forecast. We did turn out a couple of times to fires started by people mowing dry grass in the afternoon. So at the risk of sounding like a broken record, I just want to go over the basics for mowing or slashing grass again.

Rule #1 Don't do it! If the grass is dry a hot bearing or muffler, or a spark from that muffler, can start a fire. More likely though will be the metal blades that create a flint effect by striking a rock or other abrasive material. This can also happen with a Brush Cutter and to a lesser extent a Chainsaw chain.

So it is best to do your mowing while the grass is green, failing that, mow early in the morning before the temperature and wind gets up.

Choose your day. You can use rain to your advantage and mow while it is wet.

And it is mandatory to have at least 10 litres of water with you (preferably in a knapsack).

At this year's fire awareness session there was some discussion about the safety of LPG bottles. The take home message was that your large household bottles have a number of safety features built in and are fitted by a licensed plumber. The reports of them failing, even when surrounded by fire, is extremely rare. When a bottle overheats the relief valve releases gas into the atmosphere. This gas can sometimes ignite but the bottle will direct the flames harmlessly away from the house and eventually shut down when cool enough. Your BBQ bottle does not have the same fitting requirements and are often found in enclosed spaces near flammable materials. If you are going away or there's a fire in the district, think about moving your 8.5 Kg to a open area where it can't light up your entertainment area or other buildings. Be aware that your BBQ bottle needs to be upright. If it vents 1litre of gas from the top of the bottle, you have 1 litre of gas, but if it is laying on it's side and a litre of liquid vents out, it expands into 270 litres of gas. The LPG gas is heavier than air and likes to make its way down under decking and potentially your home. So it will be safe away from buildings in a cleared area but ensure that it won't tip over.

So until we have substantial rainfall to end this fire danger period, be careful and stay safe.

Andrew Campbell
Fire Prevention Officer
0428253104



Community Bank Heathcote & District

After a two year 'covid break' our popular Annual Farmers' event is back!

This year's event, 'Safe 'n Secure', will be held from 5:30pm Thursday 24th March at Palling Bros Brewery and presents a great chance for all members of the community to get together and learn some valuable information to protect themselves and their properties whilst enjoying a BBQ and a local brew.

We have some great things planned for the community including talks from the experts.

John Darcy who is the Senior Farm Safety Advisor for the Victorian Farmers Federation will be presenting on farm safety and our local Vic Police Farm Security Liaison Officer (and former Heathcote footy player) Dan O'Bree will give us an update and tips on farm security.

There will be a few other surprises on the night including an opportunity to take home a Stihl battery powered chainsaw.

Enjoy a Heathcote Lions Club BBQ and a cold Palling Bros beer - all free of charge.

RSVPs are appreciated for catering purposes.



You are warmly invited to

BARFOLD

COMMUNITY CHURCH

Meets 10.00 am

2nd – 5th Sundays each month

followed by morning tea

at Barfold Union Church

Heathcote-Kyneton Rd, Barfold

Contact; Leigh 0425812786



Northern Churches News

On January 30th, we finally had our memorial service for Mary Bennett at the Mia Mia Church.

It was great to join with Mary's family and the local residents of Mia Mia and Redesdale to remember Mary and what she gave to the communities through the many organisations she was a member of.

Much of her life was dedicated to helping people. A lovely lady at rest. A morning tea was enjoyed afterwards.



COMMUNITY DEFIBRILLATOR

Located on the side of the Redesdale fire station
Access code is 3444 (Redesdale post code)

DEFIBRILLATOR

**The Community owned defibrillator
is now accessible to all
community members.**

**It is situated on the
outside wall of the CFA building**



UNITING CHURCH

10am Start

Morning Tea is shared before each service at 9.45



Church Services for March 2022

March 13th Metcalfe

March 27th Barfold

Please see below website for Changes to services

www.macedonrangesunitingchurch.org.au

For more information go to -

www.macedonrangesunitingchurch.org.au

CATHOLIC CHURCH

Redesdale 2nd Sunday of each month 11am

Turn your house
into a home
with Tucks
locally made products



- Aluminium and Timber Windows
- Window Replacements • Security Doors
- Shower Screens • Wardrobe Doors

We are in your area regularly
and offer a **FREE** measure
and quote service.

We can offer supply and install prices.



**Tucks
Windows
BENDIGO**

Celebrating 43 Years
providing top quality
products and
professional
friendly service.

P: 03 5446 8855

E: quotes@tuckswindows.com.au

www.tuckswindows.com.au

REDESDALE RECREATION RESERVE

Notice is given of a **PUBLIC MEETING** to be held at the

**Reserve Pavilion on Tuesday 8th
March 2022 commencing at 6pm.**

The purpose of the meeting is to nominate no less than three (3) or more than nine (9) persons as the Committee of Management for the (Redesdale Recreation Reserve for a term of three years. The current committee's term will expire on 12th March 2022. All positions will be declared open and nominations will be accepted prior to or on the night.

Nominations from women, Aboriginal people, people with disabilities, young people and people from culturally diverse backgrounds are encouraged.

Further information, nomination forms and nominee declaration forms may be obtained by contacting your local Department of Environment, Land, Water and Planning office or at the meeting.

For further enquiries please contact the Secretary,
Craig Newton E: 3444reserve@gmail.com.

Travel Bits

As some readers will know, I have been involved in the travel industry for over 40 years. To say that the last 2 years have been difficult, is an understatement.

However, I am going to start a regular column on travel, and hopefully you will find it interesting and as things improve it may even be helpful.

Before starting, let me say that I no longer own any retail travel outlets, so anything I write is without prejudice and without self-interest.

One of the vexing issues for would-be travellers is whether to use a travel agent, or book direct online. The latter is easy and convenient, however when you book via a travel agent you are immediately protected under Australian consumer laws. Booking directly with a hotel or travel service (tours, transfers etc) where your funds are sent overseas, provides you no certainty about refunds being returned to you for any service that you want to change or cancel.

Travel insurance usually covers you once travel begins, but not necessarily before then. This is not always the case, but you usually need to have taken out the Insurance prior to payment, and only a medical reason will be considered for a refund.

You cannot change your dates or cancel your travel and expect to get all your money back.

If you use a travel agent and pay them directly, your funds are protected. All Australian travel agents have to operate "Client Trust Accounts" that protect your funds right up until travel begins.

Never travel without adequate travel insurance. Just as you would not drive a luxury car that is uninsured, don't travel without adequate travel insurance.

Now, when will it be safe to travel overseas? COVID has completely wreaked havoc in the travel industry. Over 30% of all Australian Travel Agencies have closed their doors. Most of the remaining agencies are not selling international travel at all.

Now that our borders are opening, domestic travel is definitely going to boom, but already properties and services are full during school holiday periods, Easter, and Christmas/New Year.

Graeme Turner, the owner of the Flight Centre group (Australia's largest travel agency network) recently commented that it will be 12 – 24 months before international travel will be back to 'normal'. I agree in principle, but some international destinations will move quickly, if they are deemed to be "Covid free".

OK, I hope this has been helpful. In the future I will write about overseas destinations that were and still are, my field of expertise.

Simon

Proudly printed in Kyneton

Castlemaine, Kyneton & Gisborne
CopyCentre
Printing together for our community

Design & Pre-press
Plan Scanning, Finishing Services.

*Not just a Copy Centre...
we are so much more.*



www.windarring.org.au

58 Mollison Street
Kyneton
03 5422 2400



School News

Respect, Resilience & Relationships

We are very excited to begin back at RMMPS. This year we have had some staffing changes as we said our goodbyes to Lydia, Mick and Lou last year and have welcomed Javier into the Business Manager role. Our classroom programs have maintained continuity with James Addlem continuing to work in our Junior classroom and myself, Andrew King, continuing in the Senior classroom. We have broadened our specialist areas as well, as Mick retired, we have introduced Spanish as our new language. We are very fortunate that Javier is able to support us in this regard as he is originally from Columbia.

Our newest Prep

We have welcomed our newest Prep into our lovely school community. Shae has hit the ground running and is the younger sibling of one of our other students, Travis. We are loving having a new Prep at school and she has brought such a positive outlook and vibrant personality.



Swimming, Ecolinc Excursion and Clean Up Australia Day

We have been fortunate enough to participate in the Open Water Learning Experience at Lake Eppalock. The students travelled to Eppalock for a few hours of learning about water safety and having a great time.

On Monday, February 21st, our students are travelling to Bacchus Marsh for a free, Science excursion. There are rumours of dinosaur bones being dug up so watch this space.

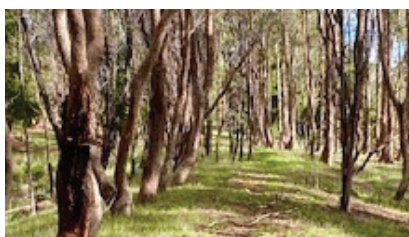
On March 4th, we are participating in Clean Up Australia Day again. If you see us out, cleaning up around the town, please be sure to say hello!



Please contact the school for 2022 enrolment information to be a part of our wonderful school.

STONE RESERVE

Unsafe and neglected to valued and protected



What is it?

Stone reserve used to be a stone quarry for the railways in the late 1800s. It has been a neglected and rubbish strewn piece of crown land brought to community attention through a public space plan by the City of Greater Bendigo (COGB). It is approximately 2.6 hectares.

Where is it?

In Central Victoria, the reserve lies on the Redesdale Heathcote Road as it approaches the Redesdale bridge from the south. It lies on elevated land on the right-hand side or southeast of the road. The road forms the north-western border.

What does the community want to do with it?

The elevated portion of the reserve overlooks the historic Redesdale Bridge, an icon in the area. The community pro-poses to develop a walkway from the township of Redesdale to and through the reserve to an elevated position where the bridge can be viewed and where visitors can read the colourful local history associated with it.

The community would also like to improve the landscape to encourage local fauna and flora.

What needs to happen?

The site plan is to be approved by all interested parties. Permission to construct the walkway and history boards should be given by DELWP and a management committee must be formed. Local aboriginal cultural heritage commu-nity input is essential.

What's happened so far?

A strategic plan has been written and a management subcommittee of the Redesdale and District Association has been working for 2 years. A survey has been completed and the reserve has been cleaned up by DELWP. A group of "Friends of the Reserve" has been formed. All community groups and local committees are supportive.

Who is going to fund it?

It is estimated that the project will cost approximately \$80,000. A challenge grant of \$25,000 has been promised if oth-er funding can be found. \$5000 has been raised in crowd funding. \$4,700 has been promised for the pathway. \$5000 'in kind' has been received through COGB for the survey. \$40,000 should be raised by other means.

Why do we need it?

Redesdale has one path from the school to the general store and a path within the reserve. There are no other recre-ational paths or walkways. Apart from the pub, the public toilets and the recently closed café, there are no permanent features for visitors to enjoy in Redesdale. The recent 150 year celebrations for the bridge highlighted the fact that there was no safe place to view the bridge and no safe parking. Developing a walkway will encourage exercise, learning and community contact and collaboration and will enhance pride in the township. There is also the opportunity to erect an information board about the Aboriginal history of the district.

Contact: Kathy Hall 0407 116 899

kathhall32@gmail.com

creative
designs
for your
business

logos menus flyers posters
invitations brochures magazines
business cards advertisements
letterheads with compliment slips
full business imaging

lyn ingles | graphic designer
blupen@bigpond.com
0429 911 980

Proudly Sponsoring
assistance to the 'Bridge Connection'



Support your **community newspaper** the

'Bridge Connection'

who is supporting **your community**.

Visit: **www.redesdale.net**

district, events, businesses and news.

For more information turn to **page 3**
for advertising rates or call and chat to

Editor - **Regina Bennett 5425 5402.**

'Bridge Connection' Community Newspaper

Campaspe River Update

An **Information Session for Coliban Licence Amendment** was run by the EPA on January 24th to provide the community an understanding of the process and the following time-line...

Amendment Process for Kyneton WRP

Stage 1 – Application received and public feedback sought (indicative dates)

24 Jan EPA Information Session for public

21 March EPA Expect to receive Amendment application

1 April EPA (anticipated) Decision point: is application accepted?

1 April Public Application available on Engage Victoria website for public feedback

engage.vic.gov.au

April onwards EPA assesses the application

Late April (likely 21 or 28) **Public Information Session** about the amendment application

6 May Public feedback period closes

Stage 2 – Consider feedback and assessment (indicative dates)

May EPA Consider public feedback

May EPA Decision point: hold a conference of interested parties?

Late May Public (likely 19 or 26 May) Conference of Interested Persons ColP

(if sufficient public interest has been voiced/received. So please have a say.)

Mid June EPA Recommendation report from ColP convenor _____

June – July EPA Seek additional information from Coliban Water

Late August Public Community briefing to inform about EPA's decision.

End of August EPA Issue Amended Operating Licence

Considerations required: the Act in section 74(3) sets out various considerations EPA is required to take into account when determining whether to amend, including:

Compliance with the General Environmental Duty
Impact of the activity on human health and the environment

Principles of environment protection

Best available techniques or technologies

Consistency with the Act and regulations.

Any benefit gained for the health of the river, by a change to using data from the gauge now in place upstream of the discharge point, must not be lost by changing the dilution ratio in the licence, in a way that disadvantages it. Continued use of medians in the licence that allow huge contamination events to be averaged out and condoned is still of grave concern. Surely following the Act should improve our waterways.

Sept News from Coliban Water warned that the risk of releases to the river would still be with us until the 13km pipeline to take Class C water to irrigators was complete. This is listed as early 2023 in their summer Customer Update and states that it will allow year-round irrigation. There are grave concerns that the topography and soil types/geography of the land to be irrigated, will result in this C Class water entering the river and ground water, as run off and seepage. **EPA document 168 has Principles and Guidelines for Wastewater Irrigation** that must be adhered to for the health of the Barfold properties participating in and neighbouring the scheme, as well as the waterways themselves. Are Principles of environment protection and Best available techniques and technologies being considered?



CV SHEDS
Est. 1995


Quality supplier and installer of:

- Farm Sheds - Work Shops
- Hay Sheds - Garages/Barns
- Quality RHS Frames
- All Australian Steel
- Shed Materials - purlins/ sheeting also available

Been Building sheds in Central Victoria for over 40 years

Come and visit us at 12 Bourke St Kyneton
Mon- Fri 8 am to 4.30 pm, other times by appointment
03 5422 6644 or info@cvsheds.com.au www.cvsheds.com.au

KY245824K



REGISTERED
Building Practitioner

Campaspe Valley Landcare Group

WINDS OF CHANGE

Is it my imagination or is the wind really getting stronger and more frequent, there are times it reminds me of Jan Juc, on the surf coast. The winds there can be so persistent and gusty. At Jan Juc the salt laden air burnt and stunted all but the hardiest of plants, very few ever reached their full height unless they were sheltered and almost all were bent over to some degree with the foliage favouring the inland side.

The only windbreak we had then was the new houses going up between our home and the cliff overlooking Bass straight and even those were insufficient to dampen the force of the wind.

What are the effects of wind? You have heard of the wind chill factor, that is because the wind is removing heat away from a body quicker than heat can be generated by that body therefore the body is experiencing an uncomfortable loss of heat.

Winds also remove moisture by carrying it away as droplets to be more easily evaporated.

Winds that are forceful, damage crops by blowing away unfertilised blossom bruise fruit and deter pollinators.

Winds that are strong and persistent stunt and malformed vegetation.

Winds intensify rain and hail damage.

Winds fan force grass fires.

In Drought wind blows away valuable top soil causing erosion and destabilising the land.

Wind blown pollen and dust aggravates the airways and eyes of animals as well as humans.

Windbreaks have been known for centuries to be useful for many reasons. I will just mention a few. Livestock benefit from the shelter afforded by windbreaks both from cold in winter and heat in summer which results in healthier animals that are less stressed creating better weight gain and lower mortality, and livestock tend to browse on the lower branches for fodder often useful in drought.

In cropping, a micro climate effect is created by the Windbreak's wind shadow effect allowing moisture to be retained longer improving overall yield.

On the windward side of orchards windbreaks reduce blossom loss and allow pollinating insects to carry out their work.

Timber can be harvested at different points in time to thin the density of trees.

Carbon capture for Carbon Credits, a tree is almost as big below the ground as above it, according to data from Agro Forestry "It has been estimated that for each acre planted in field windbreaks, over 21 Tons of carbon dioxide are sequestered in trees by age 20".

Windbreaks act as homes and habitat for native birds and arboreal animals, and a corridor of genetic transfer from one wooded area to another.

Many years ago windbreaks of Pine and Cyprus were common as single row of tree plantations, and there are some examples of that style of wind break here in Redesdale often along roads and driveways.

Windbreaks have traditionally been dense growing

evergreen Northern Hemisphere conifers that not only dampen wind but act as a visual screen, and even a heat barrier. Privacy screens have their place, but do tend to over shade denying light to under story plants. Non natives such as Northern Hemisphere Cyprus are prone to a type of die back disease caused by a nematode, and like introduced species of pine they do burn well and don't regenerate after fire like natives pines do. Pine needles also build up under trees creating an almost sterile environment that is also easy to ignite.

There are things to consider when putting in a windbreak plantation, such as what trees best tolerate suit your soil type, and how drought and heat tolerant do they need to be, what are the prevailing wind directions? eg Northerly winds are known to be hot and southerly's cold. Here in this area we generally cop it from all directions.

Windbreaks need to be at least two rows of trees to be effective, they can be all the same species that will ensure a similar height, or the second row could be a tree of lesser height creating a greater density of foliage in the mid height, the placement should be offset so that the trees in the rows are not aligned. Lower story plants can be added as needed.

A general rule of thumb is a windbreak will shelter an area approximately 10 times it's height. So if a wind break is about 12 metres in height it will shelter an area up to 120m into the paddock from the effects of the wind.

Fire resistance is also a factor, some exotic trees like Oak varieties Dessert Ash and Claret Ash are very hard to ignite. Peppercorn and some ornamental fruit trees also offer good fire resistance and make a reasonable mid story tree, and stand up well to strong winds. Some Australian Trees should be avoided for their flammable bark and foliage.

The Natives that are endemic to this area are obviously good candidates as well as many other natives from similar places further afield. Grey, Yellow, Red, and White Box, River Red Gum, and many other native trees like Spotted Gum, Sheoak and Australian Cyprus Pine do very well. Many of these trees have tight firm bark and foliage that is hard to ignite

Plant out your Windbreak with tube stock from May to no later than late August otherwise the young trees will not get their roots into deeper soil. Of course you can plant earlier if soil moisture levels are high enough to not need watering.

When you Google windbreaks you will find most of the information is from North America which although the climate and tree species is not of much help to us in Australia, the general information of the benefits of windbreaks \ shelter belts are much the same.

You may find however some helpful hints and advice from FARM STYLE Australia this title comes up when you search for Windbreaks.

Before planting starts workout the dimensions of the plantation, and how many rows of trees are required and the number of trees in each row and what species. Spray the area with glyphosate at the recommended strength to kill any weeds and grasses like phalaris that will out compete the trees that you intend to be planted.

Tree Guards are an expense, and most are single use, made of plastic with bamboo stakes, these cost about a dollar or more each.

continued on page. 12

continued from page. 11.

I am currently working on recycling an advertising material to reduce costs and make a better tree guard. Tree guards of this type will offer protection from rabbits and hares, but not cattle, sheep, kangaroos and wallabies. It is best to complete the area that will become the windbreak with the use of a temporary stocklock wire mesh fence with electric fence tape to keep cattle out that will allow the trees and shrubs to establish. Once the trunks of the young trees are about 70 – 100mm in diameter they are safe from most animals.

If you happen to be a Landcare member the trees can be obtained free of charge, and tree guards can be bulk purchased at discount. Planting out a very long windbreak can be a laborious task, but our own Philip Don has a tree planting rig that makes it relatively easy. It cost a dollar per tree to plant with tractor and planting rig. A full list of suitable windbreak trees will be available from the Campaspe Valley Landcare Group Inc
Rob Chapman, Campaspe Valley Landcare Group Inc



Restaurant Review

Bon Goût !

A little bit of France is now residing in Heathcote.

A few weeks ago, a gourmet focused colleague of mine mentioned she had dined at a divine new restaurant in Heathcote called Chauncy. Following her inspiration, I made a booking for the following Saturday. We were besotted. A beautiful venue, a gourmet delight, and intriguing wines. The chef is Louis Naepels who is French and was formerly the head chef at the well-known Melbourne restaurant, Grossi Florentino. Tess Murray is the sommelier having had experience at many places including Supernatural and Cutler and Co as well as in France. Her pairing of wine for our meal was perfect. Louis and Tess recently ran a Bistro in Basque, France and returned to Australia to start a restaurant here based on the European tradition of working closely with local producers.

Chauncy is set in the old land surveyor building, a classic heritage-listed sandstone building that has been recently renovated for this purpose with Ron and Elva Loughton of Jasper Hill wines. It is fresh, light and has a lovely ambience and views. We were served a four-course fixed price set menu (\$85pp) with dessert and cheese also available as an addition. We went with the option of wine pairing with French wines. The meal included crudites with smoked eel, broad bean and green pea tortellini and a slow cooked lamb main that still makes us salivate.

Chauncy is only open for lunch from Friday to Monday inclusive. There is a main dining room and a small private dining room. Try it, with some imagination you can imagine you are in France! Bon appetite!

By MMD(squared).

Do you have a favourite place to dine out been
Somewhere new send us a review to

bridgeconnection.editor@gmail.com



We can spread any amount that you supply, usually off the ground via industrial loader. We can also get a bulk load and deliver to a number of smaller properties if required.

FERTILISER SPREADING SERVICE



Contact for a quote

Please contact
Carl 0412 144 936
or **David 0427 546 586**

email: carl@glendarling.com.au
119 Darlington Road Baynton VIC 3444

No job too small, no job too big,

RECIPE OF THE MONTH

63

Spaghetti al Pomodoro



Its tomato season, so this is a quick, simple and delicious way of using them.
(Spaghetti with fresh tomatoes)

- 1 Kg of cherry tomatoes
- 1 white onion sliced finely
- 2 garlic cloves sliced finely
- 5 tablespoons of extra virgin olive oil
- 5 tablespoons grated good parmesan cheese
- 20 basil leaves
- Salt and pepper to taste
- 1 teaspoon dried chilli flakes (optional)
- 500 gram packet of spaghetti

Cook spaghetti as per instructions on packet, making sure the water is salted.

Meanwhile in a large fry pan heat the olive oil
With the onions and garlic, cook for 2 minutes
Add tomatoes and cook gently for 10 mins.
Add salt and pepper and chilli.

When cooked drain the pasta leaving at least one cup of the cooking liquid
Toss the spaghetti into the pan with the tomatoes
Top with the parmesan and scatter the basil leaves on top.
If the sauce is a little dry add a little the pasta cooking water.
For added indulgence an extra drizzle of olive oil is a must.

Marisa Leahy

Redesdale Hall



FOR HIRE

Amenities are available for catering, meetings, weddings and club or family celebrations.

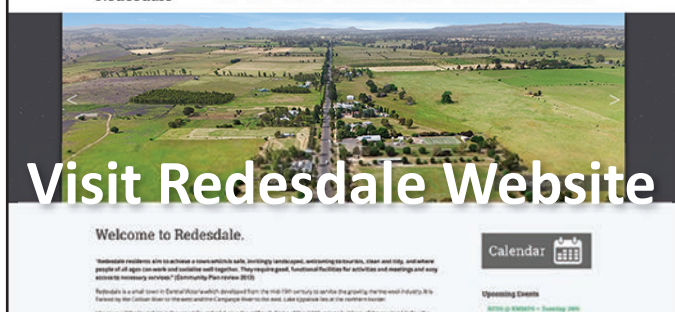
Please phone

Carolyn (03) 5425 3194 for more information.

Redesdale Hall Activities:

- 2nd Tuesday monthly, 1pm - Hall Comm. Meetings.
- 2nd Tuesday monthly, 7 pm - Rec. Reserve Meetings.

Redesdale



Visit Redesdale Website

Welcome to Redesdale.

Calendar

www.redesdale.net

PARTY EQUIPMENT FOR HIRE

The following party equipment is available for **HIRE** from the **REDESDALE RECREATIONAL RESERVE COMMITTEE (RRRC)**.



Commercial sized steel roaster	\$120 per weekend
Large marquee, 3m x 6m	\$225 per weekend
Collapsible marquee, 3m x 3m	\$80 per weekend
Tables, 1.8m x 1m	\$8 each per weekend
Table cloths, white	\$10 each
Chairs, white plastic	\$2.50 each
Umbrellas, charcoal	\$5 each

A bond will be required on most equipment for hire.

All proceeds go to the RRRC.

For more information or to make a booking, please email: **3444reserve@gmail.com**

Redesdale Ramblings

Sowing the seed.

My first attempt at sowing seeds was sadly before I learned about fractions. So when I buried the seeds 3 or 4 inches instead of $\frac{3}{4}$ of an inch nothing germinated. I think I might have been 5 so I think I can be forgiven. Despite this early set-back I eventually learned about sowing seeds from dad, starting out with the standard vegies like corn, beans, silver-beet and okra. I especially liked the way a bean splits in two to become the “seed-leaves” or cotyledons before the true leaves emerge from between them.

When I became interested in Rock Gardening I soon realised that the best way (often the only way) to get some plants and bulbs was to grow them from seed. The major overseas Rock Garden societies hold annual Seed Exchanges where members send in seed collected in the wild as well as from their gardens. A list is compiled of all the donations and distributed to all members who make their selections, listing a number of substitutes in case their first choices are “sold out”.

These days the increasing Biosecurity regulations makes the free exchange of seeds more difficult. The first thing to do is check the BICON website to make sure that the seeds you want to import are allowed into the country. Australia like a few other countries has now made it compulsory for any seeds being imported to be accompanied by a Phytosanitary certificate to ensure that they have been inspected to exclude pests, especially the Khapra beetle (*Trogodema grnarium*) which can make stored food and grain unusable.



Hoop petticoat daffodils grown from seed

Fortunately for us there are plenty of local seed suppliers and you don’t have to rely on just what’s available at the Hardware store or Nursery. One supplier in Sydney sent a packet of seeds which hadn’t turned up after nearly a fortnight and when I checked the tracking App I found that it was waiting collection – in Elphinstone! Because of lockdown I wasn’t able to drive over so the postmistress helpfully sent them to Redesdale. So the seeds were soon sown and a reasonable germination meant we were able to plant out marigolds, zinnias and cosmos in the flower beds. A delay in getting our vegie beds dug over meant we didn’t sow beans and corn till late November but they were flowering by mid-February so we should get a decent crop before autumn – if the critters don’t get to them first! Most vegetables are annuals in our climate having to be started each spring, though in Melbourne and frost-free areas some plants like Capsicums and Chilies can last a few years. Some are definitely perennial such as Asparagus and Globe Artichokes but they can still be started from seed. The difference is that usually they are started off in autumn rather than spring. Most bulbs are also sown in autumn. But they usually take more than a year to get to flower. Small daffodils such as the “hoop petticoats” only take 2 or 3 years to get to flowering size but tulips can take around 7! ply



Beans & Corn in late January 2022

because there's no other way to get a bulb which isn't available from the retailers. Sometimes it's cheaper in the long run. A packet of a dozen Freesia corms might cost \$7 but a packet of seed could cost \$4 but may result in a few dozen plants – and freesias can flower in their first year! In 2018 I got seed of *Gladiolus saundersii* which is a beautiful summer flowering plant but I've never seen it for sale in Australia. Last year it flowered for the first time and this year is even better. And this one is unlikely to become a weed in our area because it needs a dry winter and lots of water in the summer. Right now the wonderful Belladonnas are flowering and after a few weeks the seed-pods will be bursting with their marble sized "berries". If you gather them and sow them on the surface of a pot filled with well-draining potting mix after a week or so a radicle or root will emerge and find its way into the soil to form a small bulb then start growing leaves. Protect them from frost the first winter and after another year the small bulbs can be planted out into the garden and in a few years you'll be rewarded with your own flowers. Seed from the white form will sometimes produce a pink flower and vice versa.

The same can be done with Nerines and if you use pollen from one colour form on another the results may surprise you – and you can claim it as your very own hybrid. And if you've seen the price of hybrid nerines you'll know that it's well worth it!. *cheers fermi.*

The Redesdale Rock Gardener



Gladiolus saundersii

The Redesdale Hotel

Classic Country Pub Dining

**For bookings
please call (03) 4405 0601**

Monday - Closed
Tuesday - Closed
Wed to Sun • Lunch 12noon - 2.30pm
• Dinner 6pm - 8.30pm

The Redesdale Hotel
2640 Heathcote-kyneton Road
Redesdale, Vic, 3444

info@theredesdalehotel.com.au

The Redesdale Hotel redesdalehotel

www.theredesdalehotel.com.au

Redesdale Bush Market.

The Redesdale Hall Committee Inc. have decided with regret not to hold the "Redesdale Bush Market" which was coming up in March, largely due to the ongoing uncertainty regarding covid.

We look forward to seeing everyone again

once the current circumstances settle.

A big thank you to all who have supported our Redesdale Bush Market over the years and please stay safe!

Quote of the month:

There are no gardening mistakes, only experiments. –

Janet Kilburn Phillips

Proudly supporting Bridge Connection



Ryan adds roads portfolio to responsibilities

Local MP and deputy Nationals leader Steph Ryan has added the roads portfolio to her existing responsibilities as the Shadow Minister for water, public transport and liquor and gaming.

Ms Ryan has vowed to use the role to continue the fight to increase spending and improve the quality of all Victorian roads.

"I will continue to champion the cause for regional and rural communities who have been let down badly by the Andrews Labor Government's failure to properly maintain country roads," Ms Ryan said.

"Across regional Victoria, roads are crumbling but instead of fixing potholes and road cracking, the Andrews Government has announced it plans to review speed limits with the intention of reducing speeds on many country roads to 80km/hr.

"I am firmly opposed to this plan and in coming months I'll be doing everything I can to highlight the appalling state of roads across our region and country Victoria more broadly." Ms Ryan said the Andrews Labor Government had blown billions on cost overruns on city-based transport projects, while gutting funding for regional and rural roads maintenance.

"Labor cut funding for road maintenance by a quarter in last year's budget and we are now seeing the consequences as roads deteriorate rapidly," Ms Ryan said.

"Even the Hume Fwy is falling apart, with rough surface signs and speed restrictions.

"Meanwhile, the Andrews Government is spending an eye-watering \$52 billion on just four city transport projects – the West Gate Tunnel, North East Link, Melbourne metro and its level crossing removal project.

"The first thing Labor MPs did when they were elected in 2014 was axe the Country Roads and Bridges Program, which provided critical road maintenance funding to regional and rural Victorian communities."

This week Labor party MPs moved a motion in Parliament to congratulate the Andrews Government on delivering for regional Victoria, including roads and transport infrastructure.

"Labor MPs need to leave their cocoons in the city to see what is actually happening on the ground in regional Victoria," Ms Ryan said.

Media contact: Steph Ryan – 5762 1600 or steph.ryan@parliament.vic.gov.au



Federal Member for Bendigo

LISA CHESTERS MP

PO Box 338 Bendigo 3552
Cnr Williamson & Myers Sts, Bendigo 3550

T: 034 5443 9055 • F 03 5443 9736
E: Lisa.Chesters.MP@aph.gov.au

@LMChesters • /LisaChestersBendigo



More uni places For a future made in Regional Australia

Federal Member for Bendigo, Lisa Chesters has visited O-Week at Bendigo's La Trobe University to promote Labor's commitment to boost university places.

Since the start of the pandemic, the Morrison government has locked universities out of JobKeeper, cut overall funding to the sector and introduced a higher education bill making it harder and more expensive for students to go to university.

La Trobe University has announced hundreds of redundancies over the past two years, it's time they had a federal government that supported the sector.

Labor will create more university places and tackle the skill shortages that are holding back our COVID-19 recovery.

It's getting harder and more expensive to go to uni.

The proportion of applicants who get an offer of a place at university has fallen every year since the Liberal Government slashed university funding. This year, the offer rate fell to its lowest level in years.

This has happened in the face of the stark economic reality that nine out of ten jobs of the future will require a VET qualification or a university degree.

A Labor Government will deliver secure, well-paid jobs, by investing in the skills Australia needs to drive future

Need to advertise your **business locally?**

Support the
'Bridge Connection'

it is a great way to let the community
know you are **open for business.**

For more information turn to **page 3**
for advertising rates or for more information phone

Editor - Regina Bennett 5425 5402

'Bridge Connection' Community Newspaper



November 2021 Rain Fall

Redesdale 85.30mm

Mia Mia 72.75mm

Baynton 67.80mm

December 2021 Rain Fall

Redesdale 16.80mm

Mia Mia 20.5mm

Baynton 20.20mm

January Rain Fall

Redesdale 79.90mm Year to date 79.90mm

Mia Mia 42.75mm Year to date 42.75mm

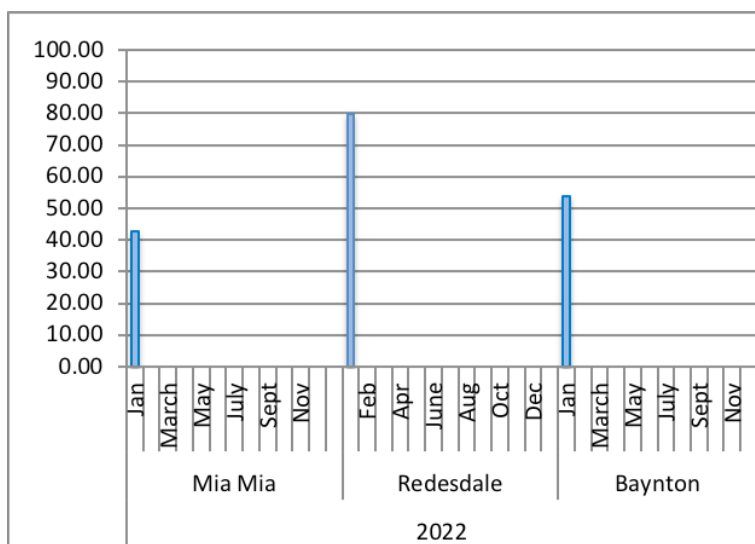
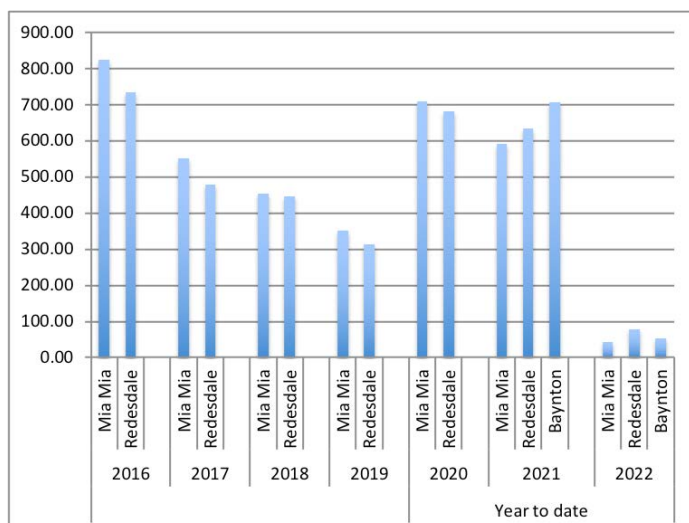
Baynton 54.00mm Year to date 54.00mm

Year Totals for Previous Years

2016	Mia Mia	826.00
	Redesdale	735.40
2017	Mia Mia	551.75
	Redesdale	479.60
2018	Mia Mia	455.00
	Redesdale	448.40
2019	Mia Mia	352.00
	Redesdale	315.00
2020	Mia Mia	711.25
	Redesdale	682.85
2021	Mia Mia	593.50
	Redesdale	634.40
	Baynton	707.80

The average yearly rainfall for **Redesdale** is about 601mms.

Thank you to **Helen Bennett** for the
Mia Mia readings & **Belinda Ryan** for
Baynton readings



LOCAL REDESDALE / MIA MIA - CONTACT LIST

<https://www.redesdale.net>

FIRE REPORT A FIRE 000

**VIC BUSHFIRE INFO LINE
1800 226 226**

REDESDALE FIRE BRIGADE

- Captain Paul Atkins 0409 141 215
- Secretary Geoff Thomas 0429 143 490



MIA MIA FIRE BRIGADE

- Captain Calvin Millard 0409 979 037 A/H: 9744 6745
- Mia Mia Fire Brigade Secretary - Steve Cadasch 5425 5548

LOCAL ORGANISATIONS

BRIDGE CONNECTION MAGAZINE

Editors: **Regina Bennett** 0437 514 223

Bridge Connection President - Gloria Pocock

Bridge Connection Treasurer - Marissa Leahy

MIA MIA MESSENGER Enquiries 5425 5565

Mia Mia Hall Committee - Wendy Hulls 5425 5590

Mia Mia Mec. Inst. Secretary - Wendy Hulls 5425 5590

Mia Mia Mec. Inst. President - Anthony Ryan 5425 5578

Mia Mia Reserve Comm. Secretary - Anthony Ryan 5425 5578

Mia Mia Reserve Comm. Chairperson - Grant Hulls 5425 5590

Otis Foundation 5444 1184

Redesdale and District Assoc. Inc - Lin Newton 0418 583 304

Redesdale Hall Committee - C. Boyd (Sec) 5425 3194

Redesdale Hall Hire - C. Boyd (Sec) 5425 3194

Redesdale Rec. Res. Cttee - Craig Newton 0448 021 544

email: 3444reserve@gmail.com

Suicide Bereavement Service - 'Standby' 0439 173 310

Tennis Club - Linda Newnham 0400 554 716

TOWNSHIP BUSINESSES

Redesdale Hotel - Beth & Garth 03 4405 0601

Redesdale General Store 5425 3154

Café Budburst - Sarah 0407 551 578

The House Gallery - Joyce 0408 154 315

COUNCILLORS

City of Greater Bendigo - Eppalock Ward

Matthew Evans 0437 867 028

Marg O'Rourke 0429 061 096

Greg Penna 0429 721 958

POLITICIANS

Federal Member for Bendigo - Lisa Chesters (Labor) 5443 9055

State Member for Euroa - Steph Ryan (Nationals) 5762 210

SCHOOLS

Redesdale Mia Mia Primary School 5425 3155

Kyneton High School 5421 1100

HEALTH SERVICES

Bendigo Health 5454 6000

Heathcote Health 5431 0900

Kyneton Health 5422 9900

Royal Flying Doctor Community Transport
(Heathcote) 5431 0900

TOURIST INFORMATION CENTRES

Heathcote Visitor Centre 5433 3121

Bendigo Visitor Centre 1800 813 153

Kyneton Visitor Centre 1800 244 711

REGULAR ADVERTISERS

Connolly Glass 0428 535 101

Lisa Chesters 5443 9055

The Optometrist 4411 6802

Palmer Steven & Rennick 5422 6500

Redesdale Hotel 4405 0601

Redesdale General Store 5425 3154

Fertiliser Spreading Service 0412 144 936
or 0427 546 586

Café Budburst 0407 551 578

Steph Ryan 5762 2100

Tucks Windows 5446 8855

William Farmer Funeral Directors 5441 5577

ORGANISATIONS

City of Greater Bendigo 5434 6000

Macedon Ranges Shire 5422 0333

Mitchell Shire Council 5734 6200

Mount Alexander Shire 5471 1700

POWERCOR 132 412

SPONSORS *Without their support our community would not thrive - Thank you!*

blue pencil publishing 0429 911 980

Elphinstone Post Office & Store 03 5473 3200

Heathcote Community Bank 1300 236 344

Kyneton Copy Centre 03 5422 2400

Kyneton Veterinary Hospital 03 5422 1099

Redesdale General Store 03 5425 3154



Fosterville Gold Mine Community Grants Applications Now Open

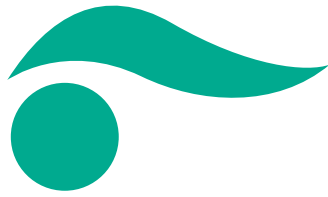
The Fosterville Gold Mine Community Grants program aims to support initiatives which actively contribute to the growth of our local communities both now and into the future.

**Applications close at 5pm
on Monday 28th March**

Visit fgmcommunity.com.au
Email fgm.community@kl.gold



AGNICO EAGLE



KOSMAC & CLEMENS OPTOMETRISTS

Open for appointments

Tuesday, Wednesday & Friday

- Eye Testing
- Over 400 frames
- Contact Lenses



59 High Street Heathcote

For appointments
please phone 4411 6802

NOW IN HEATHCOTE

Palmer Stevens & Rennick Barristers & Solicitors

Founded 1852

Palmer Stevens & Rennick

provide advice to clients all over Australia.

- Powers of Attorney
- Wills and Estates
- Criminal Law
- Conveyancing
- Property Law
- Family Law
- Agribusiness Law
- Commercial Litigation
- Traffic Law and Toll Fines
- Appearing in Castlemaine Court
- Pre purchase advice for large Agribusiness Assets
- Compensation for Government Acquisitions



Mr Joseph Palmer
Founder of
Palmer Stevens & Rennick

8 Jennings Street, Kyneton
or P.O. Box 1, Kyneton Vic 3444
Phone: (03) 5422 6500 Fax: (03) 5422 3385
Email: psr@psr.net.au

KYNETON VETERINARY HOSPITAL



Send us a picture of your very special pet and a few words to describe him or her and why you love your pet so much.

Send to: bridgeconnection.editor@gmail.com

A prize at the end of the year will be awarded for the best entry.



Tom & Henry Winner of the 2021 Petpal April Ed 119

KYNETON VETERINARY HOSPITAL
Call us today 5422 1099

'Where animal lovers heal'

A good life deserves the best farewell

 **WILLIAM
FARMER**
FUNERAL DIRECTORS

Andrew and Heather Hampton

151 McCrae Street Bendigo
12 Victoria Street Eaglehawk

P: 5441 5577

www.williamfarmer.com.au

A tradition that continues...