



ISSUE NO. 127 APRIL 2022

For the Mia Mia- Redesdale Region including:

- Heathcote • Derrinal • Glenhope • Baynton • Sidonia • Barfold
- Langley V Sutton Grange • Elphinstone • Kyneton • Metcalfe

BRIDGE CONNECTION COMMUNITY NEWSPAPER

REACTIVATE Redesdale Event

COVER CONCEPT COURTESY/ bile pencil publishing

The Redesdale residents are all about reviving their community and spirit, gathering together to have fun, celebrate association functions, markets and planning events.... friends, relatives, neighbours and businesses combining their energies for their community - Redesdale is the winner!



Continued page. 4

We're open 9am-5pm Monday to Friday or call us on
(03) 5433 3115 to speak to a friendly staff member.

heathcotenagambie.community

Community Bank
Heathcote & District

B Bendigo Bank

OPEN GARDEN
April 23-24 10am - 4:30pm

COLIBAN SPRINGS
866 Coliban Park Road
Redesdale 3444



A 5 acre natural, drought-tolerant garden with a number of picnic spots. More information on the Open Gardens Victoria website.



Please 'donate' by simply adding
Books, Magazines and DVD's
to the cabinet... *Thank you*

Located behind the
Community Notice Board
Inside the Redesdale Recreation Reserve
Redesdale Recreation Reserve,
2631 Kyneton - Redesdale Road
Redesdale Vic 3444

Just
\$10,950
Fully Installed*

**MAKE POWER OUTAGES
A THING OF THE PAST
BEFORE THE NEXT BLACKOUT**



A Gas Fired Backup Generator
automatically delivers power to
your home's electrical system in
the event of a grid outage

t2zero
transition to zero
t2zero.com.au

Call Jürgen
0436 220 220

* Includes standard installation of 8kVA generator – Costs may vary by location



Enquire now and **save** with this
SPECIAL INTRODUCTORY PRICE

Editorial

Dear Readers it was fantastic to see so many locals out mingling again at the reactivate Redesdale event along with some new faces.

Please read page 5 about the future going forward of the Bridge Connection.

have a great Easter break and stay Safe

bridgeconnection.editor@gmail.com

Regina Bennett.



Regina Bennett

Editor: Regina Bennett

Ph: 0437514223

e: bridgeconnection.editor@gmail.com

BRIDGE CONNECTION COMMUNITY NEWSPAPER

Advertising Rates/Sizes

Size	Height x Width	Price per issue	10 Editions
Business Card	55mm x 90mm	\$25	\$250
Quarter Page	130mm x 90mm	\$50	\$500
Half Page	130mm x 190mm	\$95	\$950
Full Page	270mm x 190mm	\$175	\$1,750

Colour Advertisements plus 20%.

**Please Note:
COPY DEADLINES
20TH OF EACH MONTH**

Please send editorial or advertising copy to:
bridgeconnection.editor@gmail.com
or by post to **Regina Bennett 3465 Burke & Wills track Mia Mia 3444.**
For other editorial enquiries, please phone **0437 514 223**

Bridge Connection Distribution

950 Copies printed and distributed to Redesdale Mia Mia Region, including Barfold, Baynton, Derrinal, Elphinstone, Glenhope, Kyneton, Langley, Metcalf, Sidonia and Sutton Grange

Disclaimer: The Bridge Connection Inc. Committee wishes to advise that the views or remarks expressed in this publication are not necessarily the views of the volunteer Bridge Connection Inc. editorial or production team and no service or endorsement is implied by the listing of Advertisers, sponsors or contributors. Although every effort is taken in reproducing and printing advertisements correctly, we take no responsibility for errors.

Management Committee

President : Gloria Pocock

Secretary: Regina Bennett (03) 5425 5402
bridgeconnection.secretary@gmail.com

Treasurer: Marisa Leahy 0415 384 217

Magazine: Regina Bennett - Editor 0437 514 223

Bridge Connection

- Mission Statement -

The mission of **Bridge Connection** is to bring people together by:

1. Providing information about local issues, goals and events, and to celebrate local achievements,
 2. Encouraging economic growth in the area
 3. Fostering geographic identity, and
 4. Providing a platform for public debate
- Bridge Connection is published by local people who volunteer, for local people as a **free paper** and on line at **redesdale.net** and via **face-book**



[facebook.comRedesdaleMiaMia](https://facebook.com/RedesdaleMiaMia)



General Store Liquor Store

AUSTRALIA
POST

**Fully Electronic
Postage Service**

**Come in for some
great tasting...**



**Newspapers
& Groceries**

**Banking
Facilities**



**Full alcohol
licence and
bottle shop
with local
wines.**



**Takeaway
Food Service**



**Fuel
& Oil**



Hours:

**Monday to Friday 7am to 9pm
Saturday & Sunday 8am to 9pm**

RJ REDESDALE

**Phone (03) 5425 3154
2609 Main Road, Redesdale**

Reactivate Redesdale

Redesdale and district was reactivated on Saturday 26th February 2022 at the Redesdale Recreational Reserve, with over 100 community members being able to make and renew friendships and contacts. It also gave everybody the opportunity to identify and meet representatives of the various associations and groups servicing the Redesdale and district community.

A wide selection of food was available, including slow cooked spit-roasted lamb and pork, sausages, vegetarian burgers and gluten free salads. Supported by the City of Greater Bendigo, the food, beverages and entertainment were provided to all free of charge by RaDA and RRRC.

Speaking of entertainment, it was great to hear the Mia Mia based band – The Cousin Leonard Band, led by Marty & Mandy Nelson-Williams – underlining just how diverse the talent pool in the district is. The children were also kept occupied with face painting.

Special thanks to all members of RaDA and RRRC for initiating and coordinating such a special event. Let's all hope the "reactivation" takes, and it was the beginning of a new chapter for the community!

Welcome back to all our readers of the Bridge Connection. Firstly, I would like to congratulate the RRRC for organising the Reactivate Redesdale event. It was terrific to see the community get together with smiles, laughter and great music, something that we all need in our lives.

The Bendigo Council certainly do support our small rural community in many ways and we continue to appreciate that fact.

The chance for the many committees of Redesdale and District groups to combine to introduce our new residents to who we are and what we do was a great idea.

My thanks also goes to the RaDA members who stepped up and helped with the organising and of course on the night. During our last meeting the idea of a car boot sale for our community came up, with lots of people clearing out cupboards and spring cleaning these past couple of Covid lockdowns. The thought of "one man's /woman's/ child's trash can be another person's treasure" certainly works for me.

We will keep you informed of a final date in the next issue.

The planning for the Redesdale Art Show is progressing so keep the dates of 28th -30th October in mind for a great weekend of Arts and crafts. Plenty of work ahead for our committee and to all those talented local artists, get ready to show off your master pieces!

As daylight saving ends in 3 weeks and footy season starts, it will be on for young and old again in my house, (Collingwood vs Carlton). Let's see who ends up on top this year!

Thanks for reading.

Pan Prendergast
Redesdale and District Association



REDESDALE CFA

By now most shires have declared the fire restriction season over. Some years this can be a busy time for us, having to turn out to a sighting of smoke, when we know that there's a fair chance it's just a burn off. This can be overcome by registering your burn. Burn off's are required to be registered all year round, the preferred method is online by going to the cfa website and searching Fire Permits Victoria. Alternatively phone it through on **1800 668 511**.

When burning off remember the basics;
Check the weather and get the right conditions
Notify your neighbours
Establish a cleared area of at least 3 metres

Have enough people and water on hand to contain the fire.
Lastly, be considerate of others. Don't burn toxic or offensive materials and be aware that some people may be anxious at the sight of fire, do it as discreetly as possible.
Have a safe Autumn

Andrew Campbell
Fire Prevention Officer
0428253104





CV SHEDS
Est. 1975

Quality supplier and installer of:

- Farm Sheds - Work Shops
- Hay Sheds - Garages/Barns
- Quality RHS Frames
- All Australian Steel
- Shed Materials - purlins/ sheeting also available

Been Building sheds in Central Victoria for over 40 years

Come and visit us at 12 Bourke St Kyneton
Mon- Fri 8 am to 4.30 pm, other times by appointment
03 5422 6644 or info@cvsheds.com.au www.cvsheds.com.au



Bridge Connection Community Newspaper

Dear readers as discussed in the December edition regarding the future of our paper we had only 3 people reply with advice.

The outcome is that as of June 2022 we will be having a printed edition in June, September, December and March the July, August, October, November, April and May editions will be online only on the redesdale website or emailed to you

if you wish to be on an email list and sent you.

email gapocock@bigpond.com

and ask to be added to the list

Current and future bridge Connections will be able to be downloaded at the below link

<https://www.redesdale.net/the-bridge-connection/>

Subscriptions will be still printed if you wish to have a printed edition cost is still pending.

Regina Bennett
Bridge Connection editor

Proudly printed in Kyneton

Castlemaine, Kyneton & Gisborne
CopyCentre
Printing together for our community

Design & Pre-press
Plan Scanning, Finishing Services.

*Not just a Copy Centre...
we are so much more.*



www.windarring.org.au

58 Mollison Street
Kyneton
03 5422 2400

You are warmly invited to

BARFOLD

COMMUNITY CHURCH

Meets 10.00 am

2nd – 5th Sundays each month

followed by morning tea

at Barfold Union Church

Heathcote-Kyneton Rd, Barfold

Contact; Leigh 0425812786



COMMUNITY DEFIBRILLATOR

Located on the side of the Redesdale fire station
Access code is 3444 (Redesdale post code)

DEFIBRILLATOR

The Community owned defibrillator
is now accessible to all
community members.

It is situated on the
outside wall of the CFA building



UNITING CHURCH

10am Start

Morning Tea is shared before each service at 9.40



Church Services for April 2022

April 10th Mia Mia

April 24th Sutton Grange

Easter Service Please refer to Website

Please see below website for Changes to services

www.macedonrangesunitingchurch.org.au

ANZAC Day Service 11am Sutton Grange

This year marks the 100 year anniversary of the unveiling of the War Memorial
Morning Tea will follow at the Hall. If locals could bring a plate of food this would be much appreciated.

For more information go to -

www.macedonrangesunitingchurch.org.au

CATHOLIC CHURCH

Redesdale 2nd Sunday of each month 11am

Turn your house
into a home
with Tucks
locally made products



- Aluminium and Timber Windows
- Window Replacements • Security Doors
- Shower Screens • Wardrobe Doors

We are in your area regularly
and offer a **FREE** measure
and quote service.

We can offer supply and install prices.



**Tucks
Windows
BENDIGO**

Celebrating 43 Years
providing top quality
products and
professional
friendly service.

P: 03 5446 8855 E: quotes@tuckswindows.com.au

www.tuckswindows.com.au

Acting Principal: Andrew King

Phone: 5425 3155

Email: redesdale.mia.mia.ps.ps@edumail.vic.gov.au

Redesdale Mia Mia Primary School



School News

Respect, Resilience & Relationships



School Grounds Facelift

The school grounds are certainly undergoing an upgrade in the following months.

School Mural

The students expressed an interest in some outdoor painting ideas and as a result, we have decided to paint a mural on the side of our sports shed. The students would certainly agree that Mr A and I are not the greatest of artists, luckily, we have a very talented local painter (and RMMPS family member) who is. Emily has come aboard to help teach the students about mural paintings and is working with them to develop their artistic skills. They are currently designing the mural themselves and have been keen to paint some nature images, along with other pictures. This certainly is a work in progress however with Emily's skill set and the kids passion and enthusiasm, it will be a marvellous mural upon completion.

New Basketball Court

Working with School Council and numerous turf agencies, we have been able to source a turf provider who will begin work on our new basketball and multipurpose area in the final week of the school term. This is very exciting news as we have been in communications and planning for this since late 2021. Watch this space as we get ready for our new upgrade in the near future

New Bike Track and Nature Based Play Area

Over the past few weeks, we have been receiving numerous amounts of clean fill for our bike track. We filled in the man made pond in the bottom paddock and are working with a local community member to design a simple bike track for the students to use. This area is also being enhanced through creating a much larger, natural play space for the students to explore. Natural woodchips are slowly being added to this area which will provide another, nature based play area for our students .

DELWP PRESENTATION 26-2-2022 ADAPTING TO CLIMATE CHANGE

Hosted by Campaspe Valley Landcare Group Inc & Upper Campaspe Landcare Network

A group of approximately 26 people attended the event held at the Redesdale Recreation reserve's newly constructed Pavilion.

Our 2 presenters are Dona Cayetana and Jeff Caine of DELWP Bendigo

The presentation started sometime after 3.00 pm as our DELWP presenters were a little late, in the mean time Phil Don gave the group of attendees a tour of his Releaf tree planting rig.

After introduction Rob Chapman gave a brief précis as to why action on climate change was urgent, and the Native Custodians acknowledgement by Dona Cayetana.

We were asked to choose a photographic card that best suited our individual interest within this presentation, and our choice would be discussed at the end of the presentation.

A brief introduction about why it was necessary to adapt to climate change was given followed by a powerpoint slide show which displayed climate change effects such as temp range increases and declining annual precipitation rates expected over time. Also severity of climate events which led to flooding, potential water availability, health of waterways, and the topic of our Campaspe river suddenly came into focus.

Many people spoke of their experiences with statutory bodies and the policies that government's sell versus the reality that is often duplicitous in application. Graham Connell then updated our presenters on the current health status of our Rivers and Lake in reference to recent events generated by Coliban Water's conduct and plans.

Coliban Water's recent conviction and it's latest plans were aired and our presenters expressed concern about this issue that had been going on for so long. The presenters told those present, they were unaware of this issue.

Stephanie Bell raised issues of bio links between different forested areas and the unknown condition of the tessellated basalt columns along the Campaspe at Barfold Quarry.

It soon became apparent that carbon farming in Victoria at this point in time is not well developed, and at this late stage does not appear to be well thought out. A great disappointment for many! This important policy lags well behind the Canadian model for carbon sequestration. Plantation timbers to be harvested store carbon in growth, and protect old growth forest habitat from logging. The land is replanted to resume carbon sequestration. The government's view of Carbon Farming in point seems to be almost non-existent at this stage or impractical to receive wide spread acceptance to be implemented.

For carbon sequestration to be accepted for wide spread take up it be must simplified and supported by government to make it worthwhile against other forms of farming as income.

The topic of Funding was raised and showed that government investment in aiding land holders to rehabilitate and revegetate land had diminished substantially to the point where it was becoming onerous to achieve for a very meagre grant.

According to John Cable former President of Upper Campaspe Landcare Network Inc who raised this point. Previously grants were available on a dollar for dollar basis and without much of the red tape now imposed. Much of these issues we raised came as revelations to our presenters who were impressed by our passion and enthusiasm to really get things done.

We were asked what we hoped to get out of this presentation many gave very insightful reply's as they were being noted for consideration at policy level. At the very end we then were asked to explain why we chose that particular photo card. Our reasons were all varied but tended to hark back to interest in nature, the environment the future of farming and community.

We lost some of our group towards the end of the presentation for a variety of reasons, but our presenters were appreciated for being forthright and open to our points of view. We were all invited to contact our presenters with our views and experiences and those of others to add weight to influencing the strategic policy makers, although we did not hear or get what we had hoped for we may have actually got something better, I sincerely hope so.

My impression was that our presenters were earnest and committed to helping communities to deal with the effects of climate change, but they have admitted that the policies that are in place are not currently adequate enough, and one of the best things we can do is to channel our points of view through them to pass on to the policy makers. As for the state government's Adapting to Climate Change Plan, terribly disappointed!

Frankly I did not see or hear a plan just a series of disconnected topics that had no underlying support structure and no form of implementation as to what is needed, and this was not the presenters fault. The failing lies at a much higher level probably at Government Cabinet level.

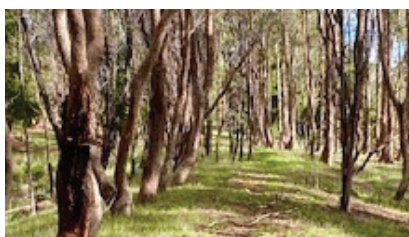
I thank Barbara James once again for her help with organising this event and my apologies for not getting back to help her with CVLG's participation in Revitalise Redesdale. Thanks to Phil and Sue Don for bringing along their tree planter. Craig Newton and the Recreation Reserve committee folk for helping us out at very short notice with the use of the pavilion, which by the way is a brilliant venue, space wise, air conditioned, really good acoustics and accommodated our group of 28 in all with much room to spare, it was great. In the 8/3/22 edition the of Midland Express page 6 Bendigo West MP Marie Edwards announced the launch of "Climate Ready" plan which claims to support central Victorian communities to adapt effectively. I hope this is a serious plan this time, one that helps to address the impacts of adverse weather events and addresses past failings in Government Policy particularly Water management Carbon farming , community infrastructure and rebuilding the CFA's ageing Volunteer Fire Brigades.

To view the Loddon Mallee Climate Ready Plan, visit : climatechange.vic.gov.au

Rob Chapman Campaspe Valley Landcare Group Inc

STONE RESERVE

Unsafe and neglected to valued and protected



What is it?

Stone reserve used to be a stone quarry for the railways in the late 1800s. It has been a neglected and rubbish strewn piece of crown land brought to community attention through a public space plan by the City of Greater Bendigo (COGB). It is approximately 2.6 hectares.

Where is it?

In Central Victoria, the reserve lies on the Redesdale Heathcote Road as it approaches the Redesdale bridge from the south. It lies on elevated land on the right-hand side or southeast of the road. The road forms the north-western border.

What does the community want to do with it?

The elevated portion of the reserve overlooks the historic Redesdale Bridge, an icon in the area. The community pro-poses to develop a walkway from the township of Redesdale to and through the reserve to an elevated position where the bridge can be viewed and where visitors can read the colourful local history associated with it.

The community would also like to improve the landscape to encourage local fauna and flora.

What needs to happen?

The site plan is to be approved by all interested parties. Permission to construct the walkway and history boards should be given by DELWP and a management committee must be formed. Local aboriginal cultural heritage commu-nity input is essential.

What's happened so far?

A strategic plan has been written and a management subcommittee of the Redesdale and District Association has been working for 2 years. A survey has been completed and the reserve has been cleaned up by DELWP. A group of "Friends of the Reserve" has been formed. All community groups and local committees are supportive.

Who is going to fund it?

It is estimated that the project will cost approximately \$80,000. A challenge grant of \$25,000 has been promised if oth-er funding can be found. \$5000 has been raised in crowd funding. \$4,700 has been promised for the pathway. \$5000 'in kind' has been received through COGB for the survey. \$40,000 should be raised by other means.

Why do we need it?

Redesdale has one path from the school to the general store and a path within the reserve. There are no other recre-ational paths or walkways. Apart from the pub, the public toilets and the recently closed café, there are no permanent features for visitors to enjoy in Redesdale. The recent 150 year celebrations for the bridge highlighted the fact that there was no safe place to view the bridge and no safe parking. Developing a walkway will encourage exercise, learning and community contact and collaboration and will enhance pride in the township. There is also the opportunity to erect an information board about the Aboriginal history of the district.

Contact: Kathy Hall 0407 116 899

kathhall32@gmail.com

creative
designs
for your
business

logos menus flyers posters
invitations brochures magazines
business cards advertisements
letterheads with compliment slips
full business imaging

lyn ingles | graphic designer
blupen@bigpond.com
0429 911 980

Proudly Sponsoring
assistance to the 'Bridge Connection'



Support your **community newspaper** the

'Bridge Connection'

who is supporting **your community**.

Visit: **www.redesdale.net**

district, events, businesses and news.

For more information turn to **page 3**
for advertising rates or call and chat to

Editor - **Regina Bennett 5425 5402.**

'Bridge Connection' Community Newspaper

Campaspe River Update

Coliban Licence Amendment.

Please take time out to consider this proposal as it will impact on our Campaspe, the big question being.... For better or for worse? Put forward your hopes for the health of the river in relation to the amendments proposed.

According to the indicative dates listed in the EPA [Amendment Process for the Kyneton Water Reclamation Plant](#), the EPA expected to receive the Amendment application from Coliban Water on March 21st. As part of [Stage 1 – Application received and public feedback sought](#), the next step is for the EPA to decide whether or not to accept the application. In early April, when this decision is made, the Amendment application will be made available to the Public via Engage Victoria website.

Feedback can be sent to the EPA via engage.vic.gov.au while the EPA assess the application. A Public Information Session is likely to be held on the 21st or 28th of April and the Public feedback period closes on May 6th.

As [Stage 2 – Consider feedback and assessment](#) progresses, the EPA will reach a Decision point about holding a Conference of Interested Persons, **if sufficient public interest has been voiced/received**. So please have a say in the future of our river. (indicative dates for CoIP 19th or 26th of May)



The Campaspe at Windmill Bridge (just downstream from the KWRP) choked with Azolla in March 2021 and again in January 2022. Azolla thrives in water high in nutrients. Pictures by Andrew Craig.



A beautiful clean river in which ecosystems can thrive and which communities can utilise safely and enjoy is our hope for the future. Picture by David Cheal.



**So please view the Amendment application at engage.vic.gov.au
watch out for the Public Information Session in April
and have your say by May 6th!**

Thank you. All the best. Lindy

Campaspe Valley Landcare Group



*Campaspe Valley
Landcare Group Inc.*

PO Box 21
Redesdale Vict. 3444

5th March 2022
PO Box 21

Dear Secretary, Committee and Members of Redesdale and District Association Inc

As you would be aware Philip Don has for a long while carried out mowing along the Kyneton – Heathcote Road at his expense and that also to a much lesser degree of CVLG, and after all the cost of breakages encountered he still wants to carry on this task.

I know that many have appreciated this work, as it diminishes the fire threat from roads lined with tall dry phalaris an exotic invasive pasture grass of high flammability. I believe this work has been worthwhile, and it gives the entrance into Redesdale an open safe managed appearance, (a sense of community pride at work.)

In January of 2020 we experienced a grassfire that emanated from the long grass beside the Lyell rd near Newnhams Lane caused by sparks from the exposed rim of a blown trailer tyre wheel. This fire threatened homes and livestock within 2KM of Redesdale, and it took many appliances and people to bring it under control including a helicopter. This event happened in mid afternoon and people be they fire fighters or local residents came out to do battle with that fire.

The Heathcote-Kyneton Rd to Redesdale and Lyell Rd are now designated Over Dimension Transport routes, and large vehicles are on the road almost constantly thus increasing the probability of mishap, and mishaps can happen at a time when we are least prepared. One way of diminishing the potential of mishap that we can control is reducing the fuel load along the verges of the main roads.

I would like to propose a combined working group committee of RaDA, Redesdale RFB and CVLG Inc to investigate what we can do, and how we can achieve it as a combined community activity, and perhaps ask Barfold Quarries to assist in removing rocks that have prevented and hindered roadside maintenance.

Country Roads which manage the previously mentioned roads is only obliged to cut 1.8 m from the road edge providing there are no obstacles and usually only once in any year. The same can be said for Council managed roads, with the exception of areas near the recreation reserve as it is a Neighbourhood Safer Place which requires extra attention.

Regional tree defoliation

We have surely all noticed the widespread defoliation that's been happening to our eucalypts. Trees along roadsides and in paddocks, that have been there for centuries or more, look decidedly unhealthy, with massive loss of leaves, leaving near-bare stems against the sky. It's a disheartening sight.

It seems that the main species affected is River Red Gums (*Eucalyptus camaldulensis*), which, despite its name, is common on recent basalt-derived soils. The only other common tree on basalt soils is Grey Box (*Eucalyptus microcarpa*). Affected trees lose foliage but may recover later with abundant leaf growth. Nevertheless, some trees are killed, as these defoliation events have been happening for years now, often in successive years.

Perhaps we have been too glib in assigning this damage to lerps or beetles, as has been the case in other defoliations of native trees. Careful inspection of the leaves shows spot tissue death, the spots being no more than 1 cm or so in diameter. The small waxy caps of lerps are not there and the large, open chew marks of beetles are also not a feature of this foliage damage. Instead, I found in the recent dead leaf patches a very small flattened larva of a leaf miner. It looks like the *Eucalyptus* Leaf Miner (*Phylacteophaga froggatti*), but I am not an expert in insects. Maybe another reader can confirm this (or otherwise). This is a sawfly (the same group as the spitfires that may defoliate local eucalypts in winter). *Eucalyptus* Leaf Miner (also called *Eucalyptus* Leaf-blister Sawfly) are common pests in eucalypt plantations overseas. The small, wasp-like adults deposit their eggs inside the leaf tissue. The flattened larvae hatch and carefully eat out the leaf tissue between the leaf surfaces, leaving an empty blister on the upper leaf surface.

Control is very difficult to impossible by chemicals. The cause of these outbreaks is unknown. There have been suggestions that our clearing of trees has reduced habitat for leaf-gleaners, (those small birds, such as pardalotes and some honeyeaters, that get their food from carefully inspecting eucalypt leaves and picking off the insects and other food). A contributing factor may be the fertilizers applied to paddocks, which also encourage luxuriant growth in the paddock eucalypts.

This foliage flush may have thinner & weaker cuticles (the waxy covering on the outside of each life that protects the leaf tissue underneath). Or there may be other causes. We simply do not know.

So far, only River Red Gums are badly affected. Time will tell whether these pests spread to other trees.

David Cheal

Guinea Fowl for sale

4-month old Guinea Fowl for sale

Sex unknown. Locally bred & raised.

\$25 each. ☎ 54253103 (David)



Typical leaf damage from a River Red Gum



We can spread **any amount that you supply**, usually off the ground via industrial loader. We can also get a **bulk load and deliver** to a number of smaller properties if required.

FERTILISER SPREADING SERVICE



Contact for a quote

Please contact
Carl 0412 144 936
or **David 0427 546 586**

email: carl@glendarling.com.au
119 Darlington Road Baynton VIC 3444

No job too small,
no job too big,

RECIPE OF THE MONTH

64

Zucchini and Feta Fritters



INGREDIENTS

2.5 Zucchini's, grated.
1.5 Eggs
125g Feta
1/3 cup Plain Flour
3/4 Teaspoon Baking Powder
1/4 cup Chopped Mint
1/4 cup Chopped Parsley
Salt
Pepper
Oil for Frying

METHOD

1. Place the zucchinis on a flat layer on sheets of paper towel. Cover with another layer of paper towel and press to remove excess water.
2. Place the zucchini, eggs, feta, flour, baking powder, mint, parsley, salt and pepper in a bowl and mix to combine.
3. Heat a little of the oil in a larger non-stick frying pan over medium heat. Add 2 tablespoons of mixture to the pan and flatten with a spatula. Repeat and cook, in batches, for 2-3 minutes on side or until golden brown.
4. Serve with Sour Cream.

Redesdale Hall



FOR HIRE

Amenities are available for catering, meetings, weddings and club or family celebrations.

Please phone

Carolyn (03) 5425 3194 for more information.

Redesdale Hall Activities:

- 2nd Tuesday monthly, 1pm - Hall Comm. Meetings.
- 2nd Tuesday monthly, 7 pm - Rec. Reserve Meetings.

Redesdale

HOME HISTORY COMMUNITY BUSINESS BRIDGE CONNECTION LOCAL THINGS TO DO EXPLORE THE REGION



Visit Redesdale Website

Welcome to Redesdale.

Redesdale residents who are active in their community, business, and social life, and who are proud of all they have achieved together. They are proud of their town, its history, and its future. They are proud of the many achievements of their community, and they are proud to be part of it. They are proud to be part of the Redesdale community, and they are proud to be part of the Redesdale website.

Calendar

Upcoming Events

www.redesdale.net

PARTY EQUIPMENT FOR HIRE

The following party equipment is available for **HIRE** from the **REDESDALE RECREATIONAL RESERVE COMMITTEE (RRRC)**.



Commercial sized steel roaster	\$120 per weekend
Large marquee, 3m x 6m	\$225 per weekend
Collapsible marquee, 3m x 3m	\$80 per weekend
Tables, 1.8m x 1m	\$8 each per weekend
Table cloths, white	\$10 each
Chairs, white plastic	\$2.50 each
Umbrellas, charcoal	\$5 each

A bond will be required on most equipment for hire.

All proceeds go to the **RRRC**.

For more information or to make a booking, please email: **3444reserve@gmail.com**

Redesdale Ramblings

At this time of year we can breathe a bit easier because the heat of summer is passed and the necessity of watering is diminished. The cooler weather and the autumn rain have re-awakened parts of the garden which had retreated underground to avoid the dry. Mainly I'm referring to bulbs but there are a few other things that take a rest such as the winter flowering climber *Clematis napaulensis* which sprouts new foliage from bare stems that have looked bleak all summer. There's also some Australian native trees which drop their leaves in summer such as the Kurrajong or *Brachychiton*. This is usually a response to extreme heat so that they don't have to keep foliage alive in a drought. We used to have a large *Brachychiton* discolour which kept the kitchen in our town-house shaded in winter and exposed it to the sun when we really could have used the shade!

Most areas in central Victoria have masses of *Belladonna* Lilies (*Amaryllis belladonna*) starting to bloom in February through March and sometimes into April. I've written before about these wondrous flowers which erupt from the bare soil on stems a foot (30cm) to three feet (90cm) tall. The umbel of trumpets can range from pure white to cerise pink and many shades in between. The scent is strong and sweet – it can be a bit overpowering in small spaces but delightful when it wafts about outdoors.

After the flowers fade large pods of juicy seeds quickly develop. From the marble sized seeds a small bulb is formed which takes a few years to reach maturity but growing from seed can provide you with a variety of colours so it's worth taking the time to sow them each year. You can let the seed germinate where they fall to gradually develop a small colony, slowly spreading outward, but in a hard winter seedlings need some protection from frost.

If you are tempted to dig up some of the flowering bulbs from a paddock or some abandoned places remember that they resent disturbance and may take a year or two to "settle in" before flowering again. Plant them with the top of the bulbs out of the ground in a sunny position which won't get watered during summer. It's also important not to plant them

too close to delicate plants that could be swamped by the voluminous leafage these bulbs can produce over the winter. *Nerines* are related to *amaryllis* and also come from South Africa. Though smaller than *Belladonnas* they are available in a wider range of colours from crystalline white through orange, red and into purplish shades. Most people are familiar with the frilly white *Nerine flexuosa alba* which is usually in bloom for Mother's Day. The next most common one is *Nerine bowdenii* which is slightly taller and can be a pale pink as well as the more commonly seen candy-pink form. *Nerine fothergilla* 'Major' is a strong red and *Nerine rosea* is a striking cerise-pink both of which seem to be impervious to the level of frost that we get here. However there are many hybrids based on *Nerine sarniensis* which are less hardy – the bulbs aren't killed but the foliage gets burned off so they can't build up the energy to flower. The range of flowers though makes it worth growing them in a protected place – even shade-cloth should be enough to keep them safe – to get to see them bloom.

From the other side of the world comes the genus *Rhodophiala* from South America. *Rhodophiala bifida* is the only species commonly available in Australia and is usually seen in dark red but orange-red and blood-red forms are around as well as a stunning pink variety. About 30 years ago I got the orange-red form from Hancock's Bulbs (www.daffodilbulbs.com.au) and about 10 years ago got the blood-red one from a friend in Leongatha. I was able to cross-pollinate the two of them to get a number of hybrids which are almost identically deep red. That was a bit disappointing but they flower really well and set masses of seeds – if they all germinated we could have enough bulbs to plant around each of the casuarinas which line the road into Redesdale!

Cheers

Fermi

The Redesdale Rock Gardener



Belladonnas



Rhodophiala bifida

Travel Bits 2

Spring is looming in Europe, and in my opinion it is the best time to travel. The European Summer Holidays and the US Summer Holidays have not yet begun, so crowds are fairly minimal. In this edition I want to talk about 2 fantastic destinations that are perfect for Spring travel – Greece and Turkey.

GREECE

Greece is a country bursting with contrasts.....sometimes sophisticated and modern, always with something to remind you of its historical past. This is a country where myths and legends are intertwined with every day life, and the forces of nature have produced majestic natural phenomena.

You can rise early and climb the Acropolis to watch the golden city of Athens awake, or enjoy a glass of wine from the towering cliffs of Santorini as the evening sun dips below the horizon. Perhaps share a Greek coffee and life's mysteries in a village café perched on a mountainside in Crete, and then savour the smells and delights of the local bakery. Watch as a fisherman's brightly decorated boat glides into harbour, then enjoy some friendly bargaining as you choose your fish from the early morning catch. Walk in the tracks of the ancient athletes at Olympia, relish the mountainous silence at mysterious Delphi, or be overwhelmed by the spectacular beauty of Meteora.

From incredible architecture to natural grandeur, Greece provides it all. From the moment you arrive anywhere on Greek soil, prepare for things to be in Greek time! No-one rushes and yet everything seems to get done.

Late nights dining out with friends and late starts in the morning become the rhythm of your day, and time is filled with wonderful sights and unforgettable experiences.

As I'm writing this, I want to go back now!

TURKEY

Turkey is a big country with terrific contrasts from Nth to Sth and East to West.

Turkey is the home of legends and history taught in classrooms the world over. You can re-live those distant (and for me) almost forgotten lessons as you tread the streets of the legendary Troy, or exotic Istanbul, once the capital of the Eastern Roman Empire.

Maybe travel to the reputed resting place of Noah's Ark or visit the secluded spot where Mark Antony and Cleopatra met and married, or the town where Saint Nicholas (Santa Claus) lived.

You may also visit the final home of the Virgin Mary, and follow the trail of the Seven Churches mentioned in the Testaments.

Travel along the Old Silk Road of Marco Polo, sail the turquoise waters of the Aegean, and sample food fit for a Sultan.

Share these experiences with the warm and friendly people of Turkey who are as varied as their landscape.

One of the best experiences I have had in Turkey, was to hire a traditional Turkish sailing ship (called a Gulet) with two families of friends, and set sail around the Turkish coast. They come with a complete crew, including a chef, and when

you look at the costs, shared between 4 or more friends, they are very economical.

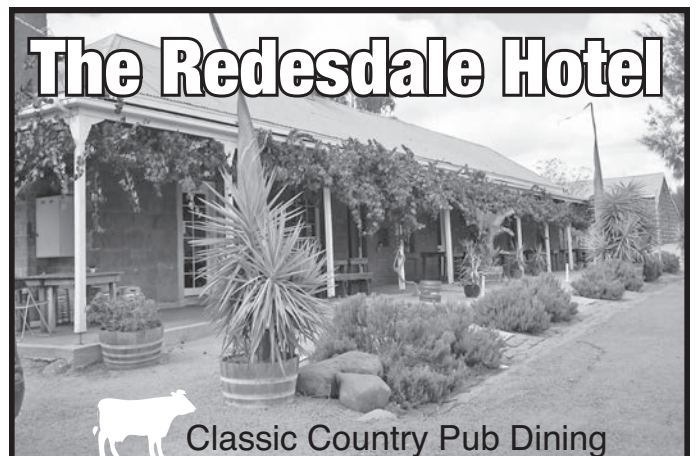
The one thing that is uniform throughout this fascinating country is the unrivalled hospitality of its people.

There are plenty of packages out there that really show off these two brilliant destinations, and companies that specialise in putting together itineraries that you can draw up yourself. Talk to your travel agent, or jump on-line if you are confident enough.

Simon



Istanbul Blue Mosque



Classic Country Pub Dining

**For bookings
please call (03) 4405 0601**

Monday - Closed

Tuesday - Closed

Wed to Sun • Lunch 12noon - 2.30pm

• Dinner 6pm - 8.30pm

The Redesdale Hotel
2640 Heathcote-kyneton Road
Redesdale, Vic, 3444

info@theredesdalehotel.com.au



The Redesdale Hotel

redesdalehotel



www.theredesdalehotel.com.au

Proudly supporting Bridge Connection



The Nationals strengthen farm trespass laws

Legislation for on-the-spot fines for farm trespass has finally passed state parliament after two years of delay by the Andrews Government.

Amendments to double the maximum fine for illegal farm invasion and close a loophole on licensed river frontages have been blocked by Labor, the Greens and Independent MPs.

The Nationals proposed two amendments to the Livestock Management Amendment (Animal Activism) Bill 2021 to double the maximum fine for individuals in line with New South Wales' hefty penalty scheme – which is the toughest in the nation – and protect a farmer's river frontage land.

But on Wednesday, Labor teamed up with the Greens and Independents in Parliament's Upper House to block the changes and instead implement a fine for serious breaches that's among the lowest in the nation.

Deputy Nationals Leader and Member for Euroa Steph Ryan said while these laws have finally passed state parliament, they needed to go further.

"Doubling the maximum penalty would have sent a strong message to anyone considering trespassing on a farmer's private property that Victoria won't tolerate illegal farm invasions," Ms Ryan said.

"The Andrews Labor Government has been dragged kicking and screaming to this position by pressure from the farming community and The Nationals.

"Labor was turning a blind eye to illegal farm invasion in Victoria, until The Nationals politically and publicly drove the agenda to strengthen farm trespass laws."

During the final debate this week, Labor admitted it failed to consult with farmers when setting the penalties for fines and jail time – saying they "left it up to the department".

"The Andrews Government's actions are not that of a government who stands up for our law-abiding farmers," Ms Ryan said

"Victoria has witnessed some of the country's most aggressive farm invasions with families and workers left traumatised as a result."

Ms Ryan said these changes were a result of her colleague Melina Bath's dogged determination in the Upper House

"There's likely to be back slapping and spin from Labor now farm trespass laws have passed parliament, but let's not forget the Andrews Government denied farm trespass and illegal animal activism was even a problem in Victoria until Melina Bath drove the issue on behalf of farmers.

"The Nationals will continue to hold Labor to account, to expedite the farm biosecurity regulations behind this legislation.

"Victoria's agriculture industry contributes billions to our regional, state and national economy and will continue to support our hardworking farmers so they can be better protected from harassment at the hands of illegal animal activists."

Media contact: Steph Ryan – 5762 1600 or steph.ryan@parliament.vic.gov.au



Federal Member for Bendigo

LISA CHESTERS MP

PO Box 338 Bendigo 3552
Cnr Williamson & Myers Sts, Bendigo 3550

T: 034 5443 9055 • F 03 5443 9736
E: Lisa.Chesters.MP@aph.gov.au

[@LMChesters](https://twitter.com/LMChesters) • [/LisaChestersBendigo](https://www.facebook.com/LisaChestersBendigo)



Central Victorian families will be better off under Labor

Today, the Morrison Government's childcare subsidy changes come into effect, but 74 percent of Central Victorian families won't benefit at all.

Federal Member for Bendigo, Lisa Chesters says Labor's plan will benefit four times as many families as the Liberal's have.

"Only Labor has a plan to put an end to out of control fees, which are up 39 per cent under the Liberals," Chesters said.

"As a parent with a child in care, I know how expensive fees can get and how difficult the system can be to navigate.

"On the surface, today's changes sound positive, but the truth is they won't help many families.

"The cost of early childhood education is more expensive than primary school.

"Access to early learning should be universal. We know that these are some of the most important years for development."

Today's changes mean if a family has a combined income under \$354,305 or has more than one child aged 5 or under in childcare, they will have their CCS rate increased by 30 per cent (to a max of 95 per cent) for their second child and any younger children in childcare at the same time.

If you have one child in childcare, the Morrison Government has not increased your subsidy at all.

Australians pay some of the highest childcare costs in the world and under the Liberal Government fees have increased by more than 35%.

Before COVID, fees across Bendigo had skyrocketed by 4.2% in 12 months.

In Heathcote, Castlemaine and Kyneton, fees have increased by 4.5%.

Parents need a real plan to tackle skyrocketing out of pocket childcare costs - not the Liberals' broken system that Scott Morrison continues to cling on to.



February Rain Fall

The average yearly rainfall for **Redesdale** is about 601mms.

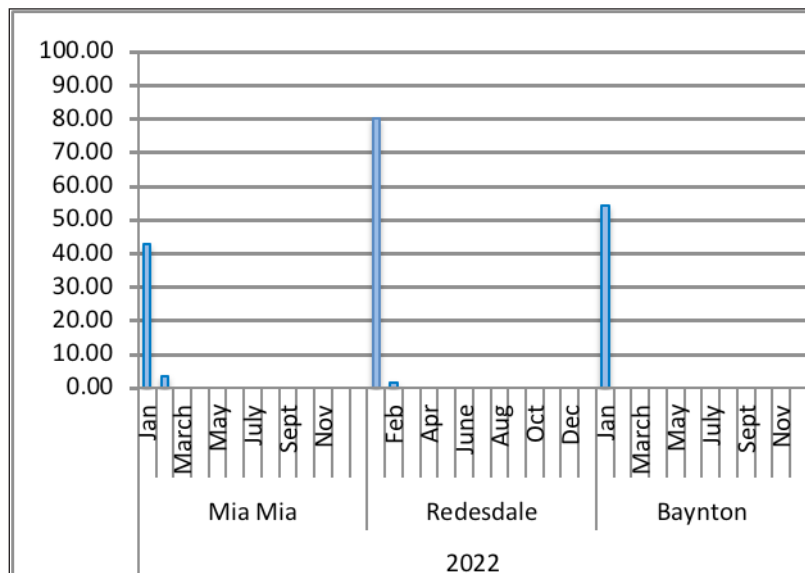
Thank you to **Helen Bennett** for the
Mia Mia readings & **Belinda Ryan** for
Baynton readings

Redesdale 1.30mm Year to date 81.20mm

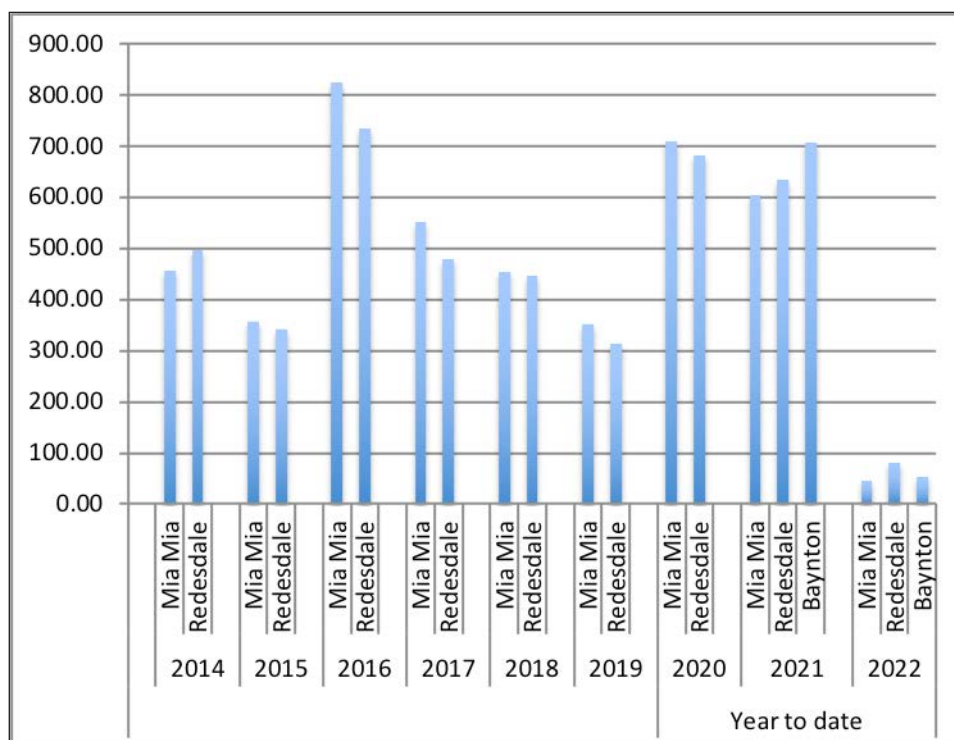
Mia Mia 3.50mm Year to date 46.25mm

Baynton 0mm Year to date 54.00mm

Year Totals for Previous Years



2016	Mia Mia	826.00
	Redesdale	735.40
2017	Mia Mia	551.75
	Redesdale	479.60
2018	Mia Mia	455.00
	Redesdale	448.40
2019	Mia Mia	352.00
	Redesdale	315.00
2020	Mia Mia	711.25
	Redesdale	682.85
2021	Mia Mia	593.50
	Redesdale	634.40
	Baynton	707.80



LOCAL REDESDALE / MIA MIA - CONTACT LIST

<https://www.redesdale.net>

FIRE REPORT A FIRE 000

**VIC BUSHFIRE INFO LINE
1800 226 226**

REDESDALE FIRE BRIGADE

- Captain Paul Atkins 0409 141 215
- Secretary Geoff Thomas 0429 143 490



MIA MIA FIRE BRIGADE

- Captain Calvin Millard 0409 979 037 A/H: 9744 6745
- Mia Mia Fire Brigade Secretary - Steve Cadasch 5425 5548

LOCAL ORGANISATIONS

BRIDGE CONNECTION MAGAZINE

Editors: **Regina Bennett** 0437 514 223

Bridge Connection President - Gloria Pocock

Bridge Connection Treasurer - Marissa Leahy

MIA MIA MESSENGER Enquiries 5425 5565

Mia Mia Hall Committee - Wendy Hulls 5425 5590

Mia Mia Mec. Inst. Secretary - Wendy Hulls 5425 5590

Mia Mia Mec. Inst. President - Anthony Ryan 5425 5578

Mia Mia Reserve Comm. Secretary - Anthony Ryan 5425 5578

Mia Mia Reserve Comm. Chairperson - Grant Hulls 5425 5590

Otis Foundation 5444 1184

Redesdale and District Assoc. Inc - Lin Newton 0418 583 304

Redesdale Hall Committee - C. Boyd (Sec) 5425 3194

Redesdale Hall Hire - C. Boyd (Sec) 5425 3194

Redesdale Rec. Res. Cttee - Craig Newton 0448 021 544

email: 3444reserve@gmail.com

Suicide Bereavement Service - 'Standby' 0439 173 310

Tennis Club - Linda Newnham 0400 554 716

TOWNSHIP BUSINESSES

Redesdale Hotel - Beth & Garth 03 4405 0601

Redesdale General Store 5425 3154

Café Budburst - Sarah 0407 551 578

The House Gallery - Joyce 0408 154 315

COUNCILLORS

City of Greater Bendigo - Eppalock Ward

Matthew Evans 0437 867 028

Marg O'Rourke 0429 061 096

Greg Penna 0429 721 958

POLITICIANS

Federal Member for Bendigo - Lisa Chesters (Labor) 5443 9055

State Member for Euroa - Steph Ryan (Nationals) 5762 210

SCHOOLS

Redesdale Mia Mia Primary School 5425 3155

Kyneton High School 5421 1100

HEALTH SERVICES

Bendigo Health 5454 6000

Heathcote Health 5431 0900

Kyneton Health 5422 9900

Royal Flying Doctor Community Transport
(Heathcote) 5431 0900

TOURIST INFORMATION CENTRES

Heathcote Visitor Centre 5433 3121

Bendigo Visitor Centre 1800 813 153

Kyneton Visitor Centre 1800 244 711

REGULAR ADVERTISERS

Connolly Glass 0428 535 101

Lisa Chesters 5443 9055

The Optometrist 4411 6802

Palmer Steven & Rennick 5422 6500

Redesdale Hotel 4405 0601

Redesdale General Store 5425 3154

Fertiliser Spreading Service 0412 144 936
or 0427 546 586

Café Budburst 0407 551 578

Steph Ryan 5762 2100

Tucks Windows 5446 8855

William Farmer Funeral Directors 5441 5577

ORGANISATIONS

City of Greater Bendigo 5434 6000

Macedon Ranges Shire 5422 0333

Mitchell Shire Council 5734 6200

Mount Alexander Shire 5471 1700

POWERCOR 132 412

SPONSORS *Without their support our community would not thrive - Thank you!*

blue pencil publishing 0429 911 980

Elphinstone Post Office & Store 03 5473 3200

Heathcote Community Bank 1300 236 344

Kyneton Copy Centre 03 5422 2400

Kyneton Veterinary Hospital 03 5422 1099

Redesdale General Store 03 5425 3154

Gibbards Crossing 2022 Harvest



Young Toby, grandson of local Helen Pearce joined us at Gibbards Crossing for harvesting of the 2022 vintage shiraz. Toby thoroughly enjoyed the day. He asked many questions, keeping us entertained as he has a keen interest in winemaking.

Toby also made the best observation of the day " This wine making is a lot of hard work!"

Frederika Laurie
www.gibbardscrossing.com.au

**creative
designs
for your
business**

logos menus flyers posters
 invitations brochures magazines
 business cards advertisements
 letterheads with compliment slips
 full business imaging


lyn ingles | graphic designer
 blupen@bigpond.com
 0429 911 980

Proudly Sponsoring
 assistance to the 'Bridge Connection'

blue
 blue pencil publishing



**Free Wi-Fi
at Redesdale
Pavilion**

Proudly brought to you by  **CITY OF GREATER
BENDIGO**

**SUPPORT YOUR
ADVERTISERS**

**'THE BRIDGE CONNECTION
COMMUNITY NEWSPAPER'**

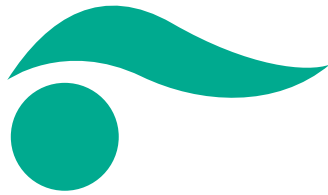
...is **supported** by **local businesses**
 and it is important, in return
 for the community to **support them**.
 For rural regions to succeed in business
 they need the 'locals' to keep them viable
 by conducting business in our township.
 So! next time you need something for a job
 that you are working on... look to the
'Bridge Connection' and give
 a **LOCAL BUSINESS** a try.

**BUY LOCAL
WHERE YOU
ARE ABLE TO.**

**SUPPORT THE TOWN THAT
SUPPORTS YOU... THANK YOU!**

To advertise in the 'Bridge Connection'
 please contact the Editor
**Regina Bennett on: 0437 514 223 OR email
 bridgeconnection.editor@gmail.com**



KOSMAC & CLEMENS OPTOMETRISTS

Open for appointments

Tuesday, Wednesday & Friday

- Eye Testing
- Over 400 frames
- Contact Lenses



59 High Street Heathcote

For appointments
please phone 4411 6802

NOW IN HEATHCOTE

Palmer Stevens & Rennick Barristers & Solicitors

Founded 1852

Palmer Stevens & Rennick

provide advice to clients all over Australia.

- Powers of Attorney
- Wills and Estates
- Criminal Law
- Conveyancing
- Property Law
- Family Law
- Agribusiness Law
- Commercial Litigation
- Traffic Law and Toll Fines
- Appearing in Castlemaine Court
- Pre purchase advice for large Agribusiness Assets
- Compensation for Government Acquisitions



Mr Joseph Palmer
Founder of
Palmer Stevens & Rennick

8 Jennings Street, Kyneton
or P.O. Box 1, Kyneton Vic 3444
Phone: (03) 5422 6500 Fax: (03) 5422 3385
Email: psr@psr.net.au

KYNETON VETERINARY HOSPITAL



Send us a picture of your very special pet and a few words to describe him or her and why you love your pet so much.

Send to: bridgeconnection.editor@gmail.com

A prize at the end of the year will be awarded for the best entry.



This is Loki one very spoilt cat

KYNETON VETERINARY HOSPITAL
Call us today 5422 1099
'Where animal lovers heal'

A good life deserves the best farewell

 **WILLIAM
FARMER**
FUNERAL DIRECTORS

Andrew and Heather Hampton

151 McCrae Street Bendigo
12 Victoria Street Eaglehawk

P: 5441 5577

www.williamfarmer.com.au

A tradition that continues...