



ISSUE NO. 131 August 2022

For the Mia Mia- Redesdale Region including:

- Heathcote • Derrinal • Glenhope • Baynton • Sidonia • Barfold
- Langley V Sutton Grange • Elphinstone • Kyneton • Metcalfe

BRIDGE CONNECTION COMMUNITY NEWSPAPER



A way of connecting your body to the soul.

A 10-week trial community **yoga class** started on Saturdays. Conducted by Heathcote professional – ‘Tania of Capture Your Essence’ - participation has been so successful that a second class is being planned for Wednesdays, and the Saturday classes will be extended.

If you are interested in joining either the **Yoga** or **Craft** afternoons please contact **RRRC (3444reserve@gmail.com)** or **RaDA (info@redesdale.net)** for more details.



We're open 9am-5pm Monday to Friday or call us on (03) 5433 3115 to speak to a friendly staff member.

heathcotenagambie.community

Community Bank
Heathcote & District



COVER CONCEPT COURTESY/ blue pencil publishing

Craft Group

L-R: Penny, Carmen Mizzi, Nic James, Gloria Pocock, Ruth Wallis and Regina Bennett (not in picture).

PHOTO COURTESY/ blue pencil publishing | Photographs courtesy Regina Bennett

Knitting & Crochet Group



In June, the **Redesdale Car Boot Sale** was held on the Reserve. Despite the terribly cold and inclement weather in the week leading up to the event, the rain held off on the day, and the event was considered to be very successful.

The next big event to be held at the **Redesdale Reserve** will be **The Pavilion Art Show** over the weekend of **Friday 28, Saturday 29 and Sunday 30 October**.

Complementing **The Pavilion Art Show** will be the **Redesdale Craft & Produce Market** on **Saturday 29 October**.

It's looking to be a great event, showcasing the extent of talent through arts and crafts along with fresh produce from the region



The completed decking and shade sails on the Community Pavilion is looking good and now being utilised already by different groups.

Every week on Thursday, the **'Sit and Knit for a Bit'** group get together to practice and exchange ideas of their craft. Open to anybody interested in knitting, crocheting and related crafts, after a few weeks the group is gathering momentum and participants.

If you are interested in joining either the **Yoga** (see front page) or **Craft** afternoons please contact **RRRC (3444reserve@gmail.com)** or **RaDA (info@redesdale.net)** for more details.

Editorial

Dear Readers

Our next Edition will be a Printed Edition so if you have anything important to submit, send to us by the 20th August.

It's fantastic to see the Pavilion getting used by several groups and looks like everyone is enjoying them selves.

bridgeconnection.editor@gmail.com



Regina Bennett

Regina Bennett.

Editor: Regina Bennett

Ph: 0437514223

e: bridgeconnection.editor@gmail.com

BRIDGE CONNECTION COMMUNITY NEWSPAPER

Advertising Rates/Sizes

Size	Height x Width	Price per issue	10 Editions
Business Card	55mm x 90mm	\$25	\$250
Quarter Page	130mm x 90mm	\$50	\$500
Half Page	130mm x 190mm	\$95	\$950
Full Page	270mm x 190mm	\$175	\$1,750

Colour Advertisements plus 20%.

**Please Note:
COPY DEADLINES
20TH OF EACH MONTH**

Please send editorial or advertising copy to:
bridgeconnection.editor@gmail.com
or by post to **Regina Bennett 3465 Burke & Wills track Mia Mia 3444.**
For other editorial enquiries, please phone **0437 514 223**

Bridge Connection Distribution

950 Copies printed and distributed to Redesdale Mia Mia Region, including Barfold, Baynton, Derrinal, Elphinstone, Glenhope, Kyneton, Langley, Metcalf, Sidonia and Sutton Grange

Disclaimer: The Bridge Connection Inc. Committee wishes to advise that the views or remarks expressed in this publication are not necessarily the views of the volunteer Bridge Connection Inc. editorial or production team and no service or endorsement is implied by the listing of Advertisers, sponsors or contributors. Although every effort is taken in reproducing and printing advertisements correctly, we take no responsibility for errors.

Management Committee

President : **Gloria Pocock**

Secretary: **Regina Bennett** (03) 5425 5402
bridgeconnection.secretary@gmail.com

Treasurer: **Marisa Leahy** 0415 384 217

Magazine: **Regina Bennett - Editor** 0437 514 223

Bridge Connection

- Mission Statement -

The mission of **Bridge Connection** is to bring people together by:

1. Providing information about local issues, goals and events, and to celebrate local achievements,
 2. Encouraging economic growth in the area
 3. Fostering geographic identity, and
 4. Providing a platform for public debate
- Bridge Connection is published by local people who volunteer, for local people as a **free paper** and on line at **redesdale.net** and via **face-book**



[facebook.comRedesdaleMiaMia](https://facebook.com/RedesdaleMiaMia)



General Store Liquor Store

AUSTRALIA
POST

Come in for some
great tasting...



Fully Electronic
Postage Service

Newspapers
& Groceries

Banking
Facilities



Full alcohol
licence and
bottle shop
with local
wines.



Takeaway
Food Service



Fuel
& Oil



Hours:

Monday to Friday 7am to 9pm

Saturday & Sunday 8am to 9pm

RJ REDESDALE

Phone (03) 5425 3154
2609 Main Road, Redesdale

Acting Principal: Andrew King

Phone: 5425 3155

Email: redesdale.mia.mia.ps.ps@education.vic.gov.au

Redesdale Mia Mia Primary School



School News

Respect, Resilience & Relationships

Our first fortnight back at school to begin Semester Two has gone well. Obviously, we have had our Principal Mr. King away on Long Service Leave during this time and as a result have had Mrs. Sue Pearson come into the school to join our team in the classroom. The children have enjoyed hearing from a new voice and have responded very well to the change in regular faces. As Mr. King will return from next week, I'd like to take the opportunity to thank Mrs. Pearson for her contribution and efforts at RMMPS over this period. It's been a pleasure to have you at our school.

The Winter colds, flus and covid's have been wreaking havoc on our already small numbers at RMMPS. This has not been a surprise given the time of year, and not unexpected given what we have all lived through over the past 2 years. I want to thank all parents and learners for taking a common-sense approach to keeping clear of the school if anyone is experiencing cold or flu-like symptoms. Without your assistance in this area, I believe our numbers at school would have been far lower over this past fortnight, so thank you very much everyone!

During the first fortnight of Semester 2 we have jumped headfirst into our literacy learning around non-fiction texts. Students have been identifying, comparing, reading and learning about the vocabulary, text features, and structure of info reports. All have enjoyed investigating topics and developing our understanding of animals, places, people and objects that we find interesting.

In Mathematics we have been developing our range of strategies and general understanding of applying the 4 operations accurately. All learners have demonstrated improvement in their retention of learnt strategies which allowed us to make a quick start to begin the Term. We have also been investigating fractions, decimals and percentages.

As part of our Smiling Minds wellbeing program, we will begin this semester learning about the importance of cultivating gratitude through mindfulness. Practising gratitude can improve mood, mental health, life satisfaction, and purposeful engagement. Learners will share personal expressions of gratitude, which fosters connection and trust among peers.

In the Arts we have been representing local indigenous dreamtime stories into visual art pieces, short plays and musical performances.



Please contact the school for 2023enrolment information to be a part of our wonderful school.

Campaspe River Update...

The Kyneton WRP Licence Amendment Now Available For Feedback.

On July 13th notification was received from Coliban Water that the Kyneton WRP Licence Amendment Application had been accepted by the EPA on May 11th which marked the commencement of statutory process, through which the EPA will consider how the Kyneton WRP is regulated into the future.

How the Kyneton WRP is regulated will play a huge part in how well our Campaspe River survives into the future.

The original plan put forward by the EPA has changed from using the engage.vic.gov.au site to view the amendment application and for your opportunity to present feedback, to using Coliban Water's own website and their ConnectColiban portal.

Go to connect.coliban.com.au/kyneton-wrp-licence-amendment
or call into the Drop In Centre, for information and to have your say.

New timeline...

Licence Amendment open for public view and feedback until August 19th

Drop In Centre from 10am to 1pm at Kyneton Bowling Club August 8th
for community engagement.

Any feedback collated will be provided to the EPA and considered as part of their Licence Assessment process.

This is the window of opportunity, your chance, to have your say about what kind of a river you hope our Campaspe will be in the future. As the Permissions Manager Mr Adamthwaite said, "The potential project has drawn a lot of interest from the community and EPA is placing strong emphasis on informing and hearing from anyone who might be affected. The regulatory process does not specify public consultation on the detail of a licence amendment, but EPA sees feedback as important to ensuring that people understand how it might benefit the community and have a chance to raise any issues before a decision is made." Let's make sure the EPA hears loud and clear that we need a clean and healthy waterway.

Please have your say.

Lindy

Nothing much can survive in a river, that looks more like a road.



You are warmly invited to

BARFOLD

COMMUNITY CHURCH

Meets 10.00 am

2nd – 5th Sundays each month

followed by morning tea

at Barfold Union Church

Heathcote-Kyneton Rd, Barfold

Contact; Leigh 0425812786



UNITING CHURCH

10am Start

Morning Tea is shared before each service at 9.40



Church Services for August 2022

Please check website for any changes

www.macedonrangesuningchurch.org.au

For more information go to

www.macedonrangesunitingchurch.org.au

CATHOLIC CHURCH

Redesdale 2nd Sunday of each month 11am

COMMUNITY DEFIBRILLATOR

Located on the side of the Redesdale fire station
Access code is 3444 (Redesdale post code)

DEFIBRILLATOR

*The Community owned defibrillator
is now accessible to all
community members.*

*It is situated on the
outside wall of the CFA building*



Turn your house
into a home
with Tucks
locally made products



Quality



& Style

- Aluminium and Timber Windows
- Window Replacements • Security Doors
- Shower Screens • Wardrobe Doors

We are in your area regularly
and offer a **FREE** measure
and quote service.

We can offer supply and install prices.



**Tucks
Windows
BENDIGO**

Celebrating 43 Years
providing top quality
products and
professional
friendly service.

P: 03 5446 8855 E: quotes@tuckswindows.com.au

www.tuckswindows.com.au

Burning off ?

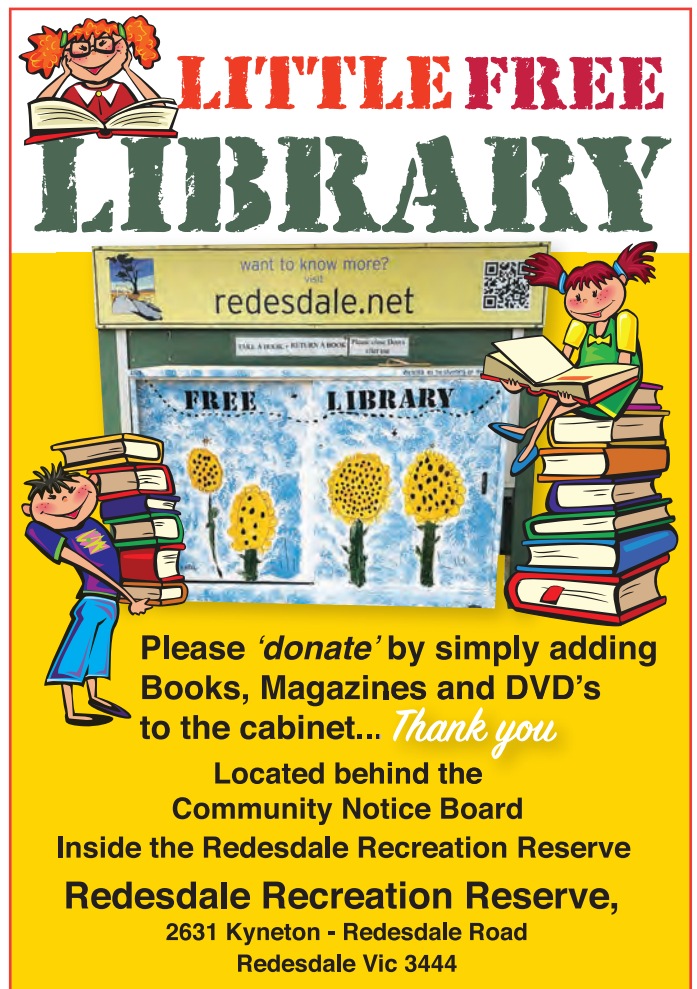
If you have any non hazardous materials that you are planning on burning, then the best time to do it is right now. That pile of sticks and other materials from your clean up is best burnt now, in the winter months, when it is safe. A fire this time of year will virtually go unnoticed and will cause no concern in the community. A fire lit in the warmer months can be triggering for some people and cause reporting which leads to unnecessary turnouts by the CFA.

Whenever you have a burn off you must register your burn ,online at **Fire Permits Victoria** or by calling **1800 668 511**.

During the fire restriction period, there is no burning off without a written permit.

I still have access to a number of smoke alarms that can be given to the community, free of charge. If you are interested please contact me.

Andrew Campbell 0428253104

LITTLE FREE LIBRARY

want to know more? visit redesdale.net

FREE LIBRARY

Please 'donate' by simply adding Books, Magazines and DVD's to the cabinet... *Thank you*

Located behind the Community Notice Board
Redesdale Recreation Reserve,
 2631 Kyneton - Redesdale Road
 Redesdale Vic 3444

creative designs for your business

logos menus flyers posters
 invitations brochures magazines
 business cards advertisements
 letterheads with compliment slips
 full business imaging

lyn ingles | graphic designer
 blupen@bigpond.com
 0429 911 980

Proudly Sponsoring assistance to the 'Bridge Connection'




CV SHEDS Est. 1975

Quality supplier and installer of:

- Farm Sheds - Work Shops
- Hay Sheds - Garages/Barns
- Quality RHS Frames
- All Australian Steel
- Shed Materials - purlins/ sheeting also available

Been Building sheds in Central Victoria for over 40 years

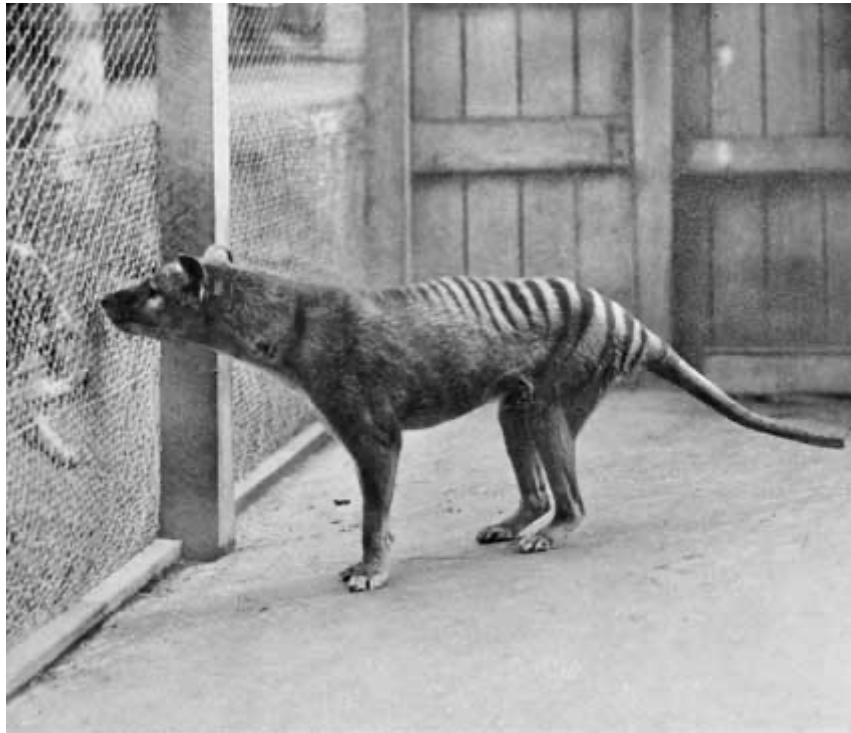
Come and visit us at 12 Bourke St Kyneton
 Mon- Fri 8 am to 4.30 pm, other times by appointment

03 5422 6644 or info@cvsheds.com.au www.cvsheds.com.au

REGISTERED Building Practitioner

The Thylacine

By Tahlia Campbell



Humans have long been the reason for many species of animals going extinct. In prehistoric times this was understandable, because how was anyone to know there were only a few of those animals left? This article is about an animal that went extinct right before our eyes, when we had every means of saving them: the Tasmanian Tiger, more accurately known as the thylacine.

The thylacine got its nickname because of the stripes on its hide, but it was actually a marsupial, like many native Australian animals. All members of the species had a pouch, although it faced backwards. They also had a long, stiff tail like that of a kangaroo, but thinner.

Its jaws were particularly interesting. It could open up its jaw to 80 degrees, and its mouth contained 46 teeth.

The thylacine is a great example of convergent evolution: the thylacine evolved to fill the ecological niche usually belonging to dogs and canids. Australia is short of native canines, so the thylacine developed a skull most similar to the red fox.

It's hard to know much about thylacines for several reasons. They were nocturnal hunters and tended to live very solitary lives, which made them hard to observe in the wild. Most of our observations come from subjects in captivity, which is not an indicator of how an animal behaves in the wild. They were exclusive carnivores, and it's likely that ground-dwelling birds were a favourite meal of theirs. They may have even hunted emus!

The biggest threat to these animals were, unsurprisingly, humans. While dingos were competitors for similar food sources, humans actively hunted thylacines to extinction. This was due to the idea that thylacines posed a threat to livestock, but it was discovered in 2011 that the thylacine

had an incredibly brittle jaw. It wouldn't be strong enough to take down a sheep, which was the main concern.

They went extinct on mainland Australia a long time ago, possibly 2,000 years. This was likely due to human population growth and the introduction of wild dogs by Europeans. Incredibly, thylacines survived in Tasmania until the 1930s.

The rarer they became, the more popular they were for captivity and there were active efforts made to preserve the species. However, animal captivity was not up to the same standards we have now. A disease that affects canines and similar animals spread through zoos and sanctuaries, taking out enough thylacines that zoologists believe their extinction could have been prevented, if not for that.

The last known wild thylacine was shot by a farmer in 1930 after he found the animal in his hen house. Protections for thylacines had existed since 1901, but they weren't properly enacted until 1936.

The last living thylacine died in captivity. It was known as Benjamin, but there's still debate over whether it was male or female. Benjamin died of neglect in 1936 after being locked out of its shelter at night during extreme Tasmania cold. Benjamin's death was not reported right away, because the zoo believed they would find a replacement. The last known living thylacine had died of entirely preventable causes, and no one knew.

Though their extinction was a tragedy, we have actual video footage of the last captive specimen, something that can't be said of many extinct animals. In 1933 a 45-second clip was filmed of Benjamin pacing in its enclosure. In 2021, this footage was fully colourised for National Threatened Species Day.

This footage is as close as most of us will get to seeing the thylacine in the flesh. We can see how they moved, how big they were. They could still be here as an important part of the ecosystem, but we lost our chance nearly a century ago. Since Benjamin's death, there have been a few alleged thylacine sightings, but nothing confirmed. They live on as a kind of urban legend. A lot of people think of extinct animals as being prehistoric, yet we have actual digital footage of this dog-like marsupial. It's a reminder of how fragile our environment is. It shows just how much of a difference we can make in the world, for better or worse.

You can find more of Tahlia Campbell's work on her website, www.chronically-crafting.com.

Have you ever wanted to learn to play Bridge



Expressions of interest

if you are interested in playing or learning to play bridge contact Pan on 0409779452

creative designs for your business

logos menus flyers posters
 invitations brochures magazines
 business cards advertisements
 letterheads with compliment slips
 full business imaging

lyn ingles | graphic designer
 blupen@bigpond.com
 0429 911 980

Proudly Sponsoring assistance to the 'Bridge Connection'

Knitting & Crochet GROUP



Get back to Knitting or Crochet...

- Learn new techniques
- Learn to Knit or Crochet
- Possible Knitting and Crocheting for charity

Every Thursday 1pm - 3pm
 at the Redesdale Reserve Pavilion

If you are interested in joining please contact:
 Gloria Pocock: gapocock@bigpond.com or
 Regina Bennett: reginabennett@bigpond.com

SUPPORT YOUR ADVERTISERS

'THE BRIDGE CONNECTION COMMUNITY NEWSPAPER'

...is **supported** by **local businesses** and it is important, in return

for the community to **support them**.

For rural regions to succeed in business they need the 'locals' to keep them viable by conducting business in our township. So! next time you need something for a job that you are working on... look to the

'**Bridge Connection**' and give a **LOCAL BUSINESS** a try.

BUY LOCAL WHERE YOU ARE ABLE TO.

SUPPORT THE TOWN THAT SUPPORTS YOU... THANK YOU!



To advertise in the 'Bridge Connection' please contact the Editor

Regina Bennett on: **0437 514 223** OR email bridgeconnection.editor@gmail.com

June Rain Fall

Redesdale 60.20mm Year to date 354.60mm

Mia Mia 50.75mm Year to date 352.25mm

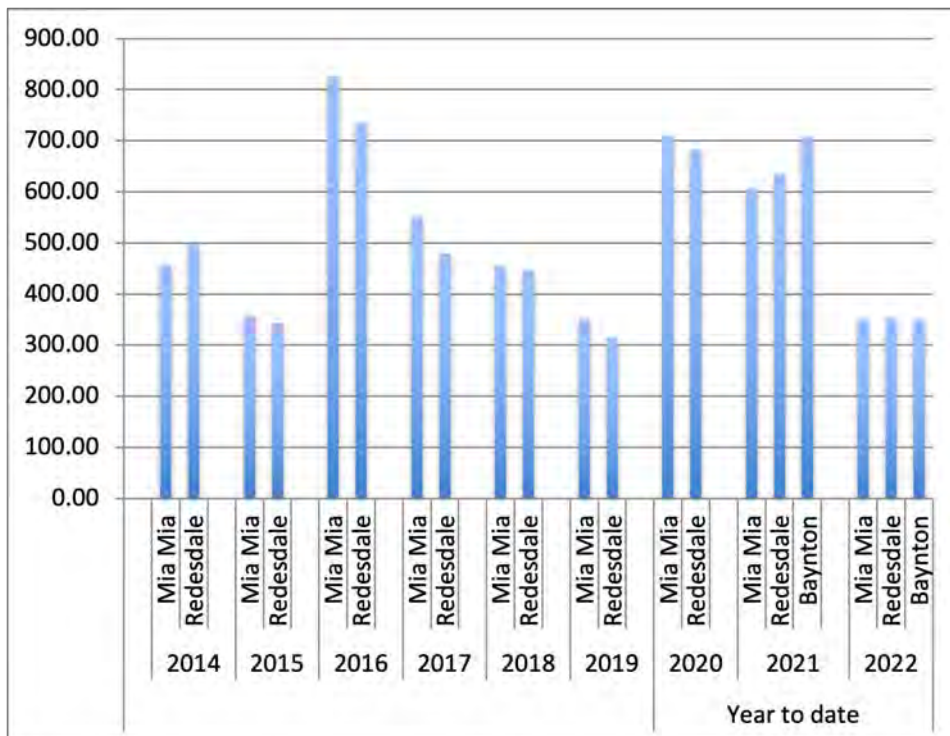
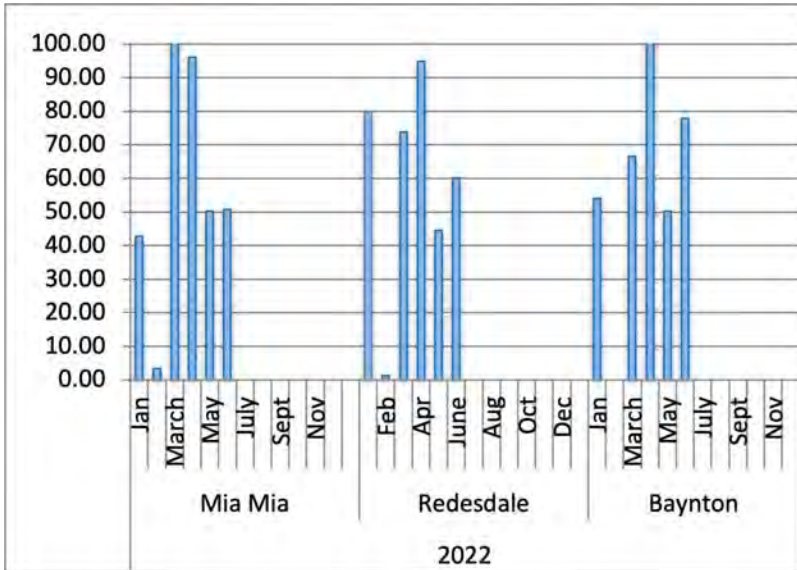
Baynton 77.80mm Year to date 351.00mm

The average yearly rainfall for **Redesdale** is about 601mms.

Thank you to **Helen Bennett** for the **Mia Mia** readings & **Belinda Ryan** for **Baynton** readings

Year Totals for Previous Years

2016	Mia Mia	826.00
	Redesdale	735.40
2017	Mia Mia	551.75
	Redesdale	479.60
2018	Mia Mia	455.00
	Redesdale	448.40
2019	Mia Mia	352.00
	Redesdale	315.00
2020	Mia Mia	711.25
	Redesdale	682.85
2021	Mia Mia	593.50
	Redesdale	634.40
	Baynton	707.80



RECIPE OF THE MONTH

68

Syrup Dumplings



Dumplings

- 1 cup SR flour
- 1tsp Butter
- 1 Egg
- a little milk

Dumplings

- rub butter into flour
- add egg and little milk.
- rub into approxamatly 6 to 8 balls

Syrup

- 1 1/2 Cups hot water
- 1tbls Butter
- 1/2 Cup Sugar
- 2 tbls Golden Syrup

Syrup

- Place all syrup ingredients in saucepan
- Bring to the boil.
- Add Dumplings cook for 20mins without lifting Lid.

Serve with cream ot ice cream

Redesdale Hall



FOR HIRE

Amenities are available for catering, meetings, weddings and club or family celebrations.

Please phone

Carolyn (03) 5425 3194 for more information.

Redesdale Hall Activities:

- 2nd Tuesday monthly, 1pm - Hall Comm. Meetings.

Redesdale



PARTY EQUIPMENT FOR HIRE

The following party equipment is available for **HIRE** from the **REDESDALE RECREATIONAL RESERVE COMMITTEE (RRTC)**.



Commercial sized steel roaster	\$120 per weekend
Large marquee, 3m x 6m	\$225 per weekend
Collapsible marquee, 3m x 3m	\$80 per weekend
Tables, 1.8m x 1m	\$8 each per weekend
Table cloths, white	\$10 each
Chairs, white plastic	\$2.50 each
Umbrellas , charcoal	\$5 each

A bond will be required on most equipment for hire. All proceeds go to the up keep & development of the **RRTC**.

For more information or to make a booking, please email: 3444reserve@gmail.com



WHAT ARE YOU WATCHING?

Ballan Local Farmers and Makers Market.
2nd Saturday of every month. **9.00 - 1.00pm**

Castlemaine. Local Farmers Market.
1st Sunday of every month. **9.00 - 1.00pm**

CFM. Weekly Market, Wednesday. **2.30 - 5.30pm**

Clunes. Local Farmers Market
2nd Sunday each month. **8.30 - 1.00pm**

Creswick. Local Farmers Market
3rd Saturday every month. **9.00 - 1.00pm**

Daylesford. Local Market.
Every Sunday. **8.00 - 3.00pm**

Gisborne. Olde Time Market.
1st Sunday every month. **9.00. - 2.00pm**

Kyneton. Local Farmers Market.
2nd Saturday every month. **8.30 - 1.00pm**

Lancefield. Local Farmers Market.
4th Saturday every month. **9.00 - 1.00pm**

Maldon. Local Farmers Market.
2nd Sunday every month.

Malmsbury. Local Farmers Market.
3rd Sunday every month. **9.00 - 1.00pm**

Talbot. Local Farmers Market.
3rd Sunday every month. **9.00 - 1.00pm**

Trentham. Local Farmers Market.
3rd Saturday every month. **9.00 - 1.00pm**

Woodend. Local Farmers Market
1st Saturday every month. **9.00 - 1.00 pm**

Foxtel

The Staircase
Rules of the game
Sanditon
The newsroom
The twelve
Hollington Drive

ABC Iview

The split
Fisk
Aftertaste
Bliss
Gardening Australia
The ABC of

Netflix

The sinner
Inventing Anna
Secret city
Click bait
Persuasion
Anatomy of scandal
Borgen

SBS iview

The bridge
D.I.Ray
Dead water fell
The sister
Bloodlands

Bendigo Sheep & Wool Show



Tom ,Ava & Alan Harris

Koole Vale Merino & Poll Merino Studd

Congratulations

Alan Harris

Winner of
**Grand Champion Fine
Ram of the Show &
Reserve Champion
Victorian Ram.**

Alan's sale date is 27th September
this Year see next edition for more
information

Beverley Merinos Stud

Congratulations

John Barty

won the Victorian Pairs

Eilan Donan Stud

Congratulations

Jock MacRae
Winner of

**Grand Champion
Superfine Ram of the Show.**



Redesdale Ramblings

Winter Tree Planting

I remember the “Small Towns meeting” when we discussed what we could do to replace the pine trees which used to form an avenue at the entrance to Redesdale from the south. *Pinus radiata*, the Monterey Pine, is a major part of the Plantation Timber Industry even though it’s an endangered plant in its native California. Many trees were suggested but the one that was chosen was a type of “She-Oak” or *Casuarina*. Fortunately the Bendigo City Council could supply them in quantity from their nursery. Though not as magnificent as the pines the casuarinas are providing a fitting entrance to our town and should last as long if not longer.

The popular saying is “the best time to plant a tree is 20 years ago”. Simply put, trees take a long time to grow, so get planting now! Winter is an ideal time to get bare-root trees into your garden. “Bare-root” is the term for deciduous trees dug in the winter and sold without soil around the roots. It’s important to be prepared for them when they arrive from the nursery. If possible dig over the ground where each tree is to be planted a few weeks earlier to loosen the soil and to make sure you aren’t going to hit a rock on planting day.

Usually you would be advised to add compost or other amendments to the hole but it really depends where and what you’re planting. If you have a prepared bed for other plants into which the new tree will be a central feature then by all means amend away. If however you are putting a tree into a paddock where it will have to contend with the natural soil – don’t bother. Filling a planting hole with compost and nice friable mix while the surrounding soil is like concrete in summer will not entice the roots to grow out to help anchor the tree and get its nutrients from beyond the prepared area. In addition with a heavy clay soil any hole full of loose, well-draining media it will fill with water during the rainy periods leading to the rotting of the roots. Planting out an evergreen tree is a different proposition.

Evergreens aren’t usually bare-rooted because they are generally in active growth year-round while deciduous trees are in a dormant state in winter, making it safe to remove them from the ground to be replanted elsewhere.

Planting an evergreen tree from a pot into prepared soil is a possibility where the potting mix is a similar consistency to what you are putting it into. If you are planting out into a very different soil the best thing to do is plant out small plants or tube-stock with a minimal amount of potting mix around the roots so that they can’t stay put but have to move out.

Deciding on what to plant is made easier if you have a purpose for the tree. Is it to provide shelter for wildlife or domestic stock? Is it to provide colour for your garden? Is it to give shade to an exposed area? Will it block out a view of something you’d prefer not to see? Do you want fruit or flowers? Do you want to make it a feature as a single specimen?

It’s also important to take into account the tree’s eventual size. Some trees described as “dwarf” can reach considerable heights in time. A neighbour of ours in Melbourne planted a ‘Little Gem’ *Magnolia grandiflora* in their backyard. It stayed under 3m for a number of years but now is level with the upper storey windows.

One of the benefits of planting trees is that you can grow shade. When we first came here there was very little shade cast by trees because they were mostly quite young. There were some gums and melaleucas but you couldn’t grow much under them. With deciduous trees you can get a mulch of fallen leaves which will become an excellent garden soil in time. Into this you can plant a range of plants which like or tolerate shade. A lot of bulbs will grow under deciduous trees and perennials such as hellebores will thrive. For an idea of how the “winter roses” have developed visit Post Office Farm in Ashwood (open on Sundays in winter when they are in bloom) and other perennials can be seen at Lambley Nursery at Ascot (near Ballarat) or Antique Perennials in Kinglake or visit a retail nursery such as The Garden Tap in Kyneton which carries a wide range of interesting plants.

Cheers

Fermi

The Redesdale Rock Gardener



Correa pulchella 'St Andrews'



Correa 'Bett's Red'

Proudly printed in Kyneton

Castlemaine, Kyneton & Gisborne

CopyCentre

Printing together for our community

Design & Pre-press
Plan Scanning, Finishing Services.

*Not just a Copy Centre...
we are so much more.*



www.windarring.org.au

58 Mollison Street
Kyneton
03 5422 2400

The Redesdale Hotel



Classic Country Pub Dining

**For bookings
please call (03) 4405 0601**

Monday - Closed

Tuesday - Closed

Wed to Sun • Lunch 12noon - 2.30pm

• Dinner 6pm - 8.30pm

The Redesdale Hotel

2640 Heathcote-kyneton Road

Redesdale, Vic, 3444

info@theredesdalehotel.com.au



The Redesdale Hotel



redesdalehotel

www.theredesdalehotel.com.au



*We can spread any amount that you supply,
usually off the ground via industrial loader.
We can also get a bulk load and deliver
to a number of smaller properties if required.*

FERTILISER SPREADING SERVICE



**Contact
for a quote**

Please contact
Carl 0412 144 936
or **David 0427 546 586**

**No job too small,
no job too big,**

email: carl@glendarling.com.au
119 Darlington Road Baynton VIC 3444

creative designs for your business

logos menus flyers posters
invitations brochures magazines
business cards advertisements
letterheads with compliment slips
full business imaging

lyn ingles | graphic designer
blupen@bigpond.com
0429 911 980

Proudly Sponsoring
assistance to the 'Bridge Connection'



Quote of the month:

“ LIKE GARDENING

IT'S A PLACE WHERE I-FIND MYSELF

WHEN I NEED TO LOSE MYSELF.

Alice Sebald



Ryan calls on Government to support Colmont students

Member for Euroa Steph Ryan has expressed concerned about the impact of the closure of Colmont School on Kilmore families and the wider community.

“This decision has come as a huge shock not just to students and their families, but also to the local community,” Ms Ryan said.

“This school is a huge part of Kilmore and, as the only IB school in the state, has been an economic mainstay of the town.

“I have written to the Education Minister to urge the Victorian Government to do all it can to support students and families in this trying time as they face difficult decisions in the days ahead.

“The Andrews Government must not allow an ideological opposition to private schools get in the way of doing what is best for students and families who are the victims of this distressing situation.”

Ms Ryan said the school’s closure would put additional pressure on the state government to step up and invest in local secondary schools.

“Broadford Secondary College is already close to capacity and prospective students for next year are being turned away,” Ms Ryan said.

“Colmont’s closure means the Victorian Government needs to urgently commit the funds needed to improve Broadford’s facilities and provide for growth.”

“Despite the region’s rapid population growth, the Andrews Government has also shown no interest in progressing with a public secondary school for Kilmore.

“The reality is that the most recent Victorian Budget failed to deliver a cent to Kilmore and Broadford despite their exponential growth and place within a crucial growth corridor.

“More needs to be done to ensure there is adequate investment in regional infrastructure to support this growth and to allow communities like Kilmore to continue to flourish.”

I will do all I can to work to support local families in the coming days.

“The Andrews Government must ensure no student’s education is compromised and the transition to new educational arrangements is as stress free as possible.”

Media contact: Steph Ryan – 5762 1600 or steph.ryan@parliament.vic.gov.au



Bendigo Labor is mourning the loss of former Federal Member for Bendigo Steve Gibbons.

Mr Gibbons reclaimed the federal seat for Labor in 1998, and held it until his retirement in 2013. He made Bendigo a safe seat, with a 10% margin in his career.

Mr Gibbons understood Bendigo deeply as a Bendigonian, something he was very proud of.

Mr Gibbons was a champion of defence work being done at ADI/Thales. This included the Bushmaster vehicle, which has recently been given national prominence as the Australian Government is giving them to Ukraine.

When the Fortuna Defence Mapping Facility faced being closed and moved to Canberra, Mr Gibbons worked closely to gain local and cross-party support – eventually convincing the then Liberal Defence Minister to keep the facility in Bendigo and base it at Longlea.

The duplication of the Calder Highway became a vexed issue in Mr Gibbons’ time, as it was going to be built on a 50/50 basis between the State and Federal Governments. However, despite its promise, the Howard Government reneged on the deal – and Mr Gibbons ran a long campaign until the Howard Government eventually coughed up the promised funds.

We extend our condolences to Steve’s widow, Diane, and his broader family.

Vale Steve Gibbons.



LOCAL REDESDALE / MIA MIA - CONTACT LIST

<https://www.redesdale.net>

FIRE

REPORT A FIRE 000

**VIC BUSHFIRE INFO LINE
1800 226 226**

REDESDALE FIRE BRIGADE

- Captain Mitchell Noonan 0439 769 985
- Secretary Geoff Thomas 0429 143 490



MIA MIA FIRE BRIGADE

- Captain Calvin Millard 0409 979 037 A/H: 9744 6745
- Mia Mia Fire Brigade Secretary - Steve Cadasch 5425 5548

LOCAL ORGANISATIONS

BRIDGE CONNECTION MAGAZINE

Editors: Regina Bennett 0437 514 223

Bridge Connection President - Gloria Pocock

Bridge Connection Treasurer - Marissa Leahy

MIA MIA MESSENGER Enquiries 5425 5565

Mia Mia Hall Committee - Wendy Hulls 5425 5590

Mia Mia Mec. Inst. Secretary - Wendy Hulls 5425 5590

Mia Mia Mec. Inst. President - Anthony Ryan 5425 5578

Mia Mia Reserve Comm. Secretary - Anthony Ryan 5425 5578

Mia Mia Reserve Comm. Chairperson - Grant Hulls 5425 5590

Otis Foundation 5444 1184

Redesdale and District Assoc. Inc - Lin Newton 0418 583 304

Redesdale Hall Committee - C. Boyd (Sec) 5425 3194

Redesdale Hall Hire - C. Boyd (Sec) Redesdale 5425 3194

Redesdale Rec. Res. Cttee - Craig Newton 0408 890 060

email: 3444reserve@gmail.com

Suicide Bereavement Service - 'Standby' 0439 173 310

Tennis Club - Linda Newnham 0400 554 716

TOWNSHIP BUSINESSES

Redesdale Hotel - Beth & 03 4405 0601

Garth Redesdale General Store 5425 3154

The House Gallery - Joyce 0408 154 315

COUNCILLORS

City of Greater Bendigo - Eppalock Ward

Matthew Evans 0437 867 028

Marg O'Rourke 0429 061 096

Greg Penna 0429 721 958

POLITICIANS

Federal Member for Bendigo - Lisa Chesters (Labor) 5443 9055

State Member for Euroa - Steph Ryan (Nationals) 5762 210

SCHOOLS

Redesdale Mia Mia Primary School 5425 3155

Kyneton High School 5421 1100

HEALTH SERVICES

Bendigo Health 5454 6000

Heathcote Health 5431 0900

Kyneton Health 5422 9900

Royal Flying Doctor Community Transport (Heathcote) 5431 0900

TOURIST INFORMATION CENTRES

Heathcote Visitor Centre 5433 3121

Bendigo Visitor Centre 1800 813 153

Kyneton Visitor Centre 1800 244 711

REGULAR ADVERTISERS

Connolly Glass 0428 535 101

Lisa Chesters 5443 9055

The Optometrist 4411 6802

Palmer Steven & Rennick 5422 6500

Redesdale Hotel 4405 0601

Redesdale General Store 5425 3154

Fertiliser Spreading Service 0412 144 936 or 0427 546 586

Steph Ryan 5762 2100

Tucks Windows 5446 8855

William Farmer Funeral Directors 5441 5577

ORGANISATIONS

City of Greater Bendigo 5434 6000

Macedon Ranges Shire 5422 0333

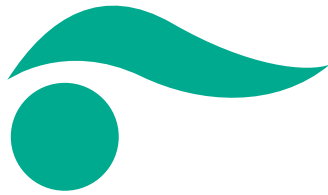
Mitchell Shire Council 5734 6200

Mount Alexander Shire 5471 1700

POWERCOR 132 412

SPONSORS *Without their support our community would not thrive - Thank you!*

blue pencil publishing	0429 911 980	Kyneton Copy Centre	03 5422 2400
Elphinstone Post Office & Store	03 5473 3200	Kyneton Veterinary Hospital	03 5422 1099
Heathcote Community Bank	1300 236 344	Redesdale General Store	03 5425 3154



KOSMAC & CLEMENS OPTOMETRISTS

Open for appointments

Tuesday, Wednesday & Friday

- Eye Testing
- Over 400 frames
- Contact Lenses



59 High Street Heathcote

For appointments
please phone 4411 6802

NOW IN HEATHCOTE

Palmer Stevens & Rennick Barristers & Solicitors

Founded 1852

Palmer Stevens & Rennick

provide advice to clients all over Australia.

- Powers of Attorney
- Wills and Estates
- Criminal Law
- Conveyancing
- Property Law
- Family Law
- Agribusiness Law
- Commercial Litigation
- Traffic Law and Toll Fines
- Appearing in all Courts
- Pre purchase advice for large Agribusiness Assets
- Compensation for Government Acquisitions



Mr Joseph Palmer
Founder of
Palmer Stevens & Rennick

8 Jennings Street, Kyneton
or P.O. Box 1, Kyneton Vic 3444
Phone: (03) 5422 6500 Fax: (03) 5422 3385
Email: psr@psr.net.au

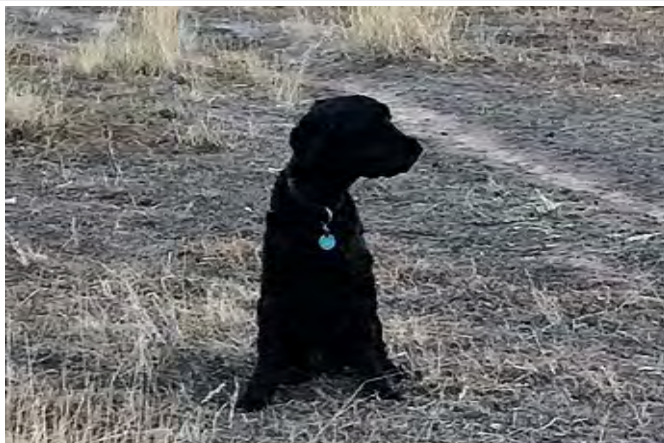
KYNETON VETERINARY HOSPITAL



Send us a picture of your very special pet and a few words to describe him or her and why you love your pet so much.

Send to: bridgeconnection.editor@gmail.com

A prize at the end of the year will be awarded for the best entry.



This is Pete the 14 year old Portuguese Water Dog he likes Sticks and balls

KYNETON VETERINARY HOSPITAL
Call us today 5422 1099

'Where animal lovers heal'

A good life deserves the best farewell

 **WILLIAM
FARMER**
FUNERAL DIRECTORS

Andrew and Heather Hampton
151 McCrae Street Bendigo
12 Victoria Street Eaglehawk

P: 5441 5577

www.williamfarmer.com.au

A tradition that continues...