



ISSUE NO. 132 September 2022

For the Mia Mia- Redesdale Region including:

- Heathcote • Derrinal • Glenhope • Baynton • Sidonia • Barfold
- Langley V Sutton Grange • Elphinstone • Kyneton • Metcalfe

BRIDGE CONNECTION COMMUNITY NEWSPAPER

THE PAVILION ART SHOW REDESDALE

FRIDAY 28 – SUNDAY 30
OCTOBER 10am – 4pm

blue COVER CONCEPT COURTESY/ blue pencil publishing

AND CRAFT/LOCAL PRODUCE MARKET

SATURDAY 29
OCTOBER 10am – 2pm

Agnes Mudford Reserve
Kyneton - Redesdale Road, Redesdale
(Opposite Redesdale Hotel)

www.redesdale.net

FRIDAY 28 OCTOBER

Opening Night
Pavilion Art Show
6pm – 9pm

- \$10 Admission includes glass of sparkling/wine and finger food
- Additional drinks available for purchase
- Silent Auction 6pm - 9pm

COME AND BE PART
OF THE FESTIVITIES



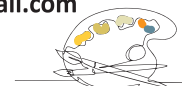
SATURDAY 29 OCTOBER
Craft/Local Produce Market
10am – 2pm
Agnes Mudford Reserve

- Local produce, Heathcote Region Wines and handcrafted goods
- Food vans and coffee available
- Devonshire Teas served at the Redesdale Hall
- **Pavilion Art Show 10am – 4pm**
- **Gold coin donation entry**



SUNDAY 30 OCTOBER
Pavilion Art Show
10am – 4pm

- **Application forms for Art Show** please email: info@redesdale.net
- **Application forms for Craft market** please email: 3444reserve@gmail.com



Pan After

The Redesdale Hall



FRMR



blue

Ray White

Ray White



We're open 9am-5pm Monday to Friday or call us on
(03) 5433 3115 to speak to a friendly staff member.

heathcotenagambie.community

Community Bank
Heathcote & District

Bendigo Bank

7th

ON PROPERTY RAM SALE Tuesday

27th September 2022

Inspection: 10.30am

Sale Starts 12.30pm

ALAN HARRIS

Koolevale Merinos

0417 058 780

koolevale.merinos@bigpond.com



KOOLE VALE
MERINOS



Grand Champion Fine Merino Ram Bendigo 2022

50 MERINO & POLL MERINO RAMS

28 WHITE SUFFOLK RAMS



SELLING AGENTS

28 PARFREY ROAD, COSTERFIELD

Chris Anderson 0408 921 540

3% REBATE
OUTSIDE AGENTS

JEW'S HARP

POLL DORSET STUD

Annual On Property RAM SALE

INSPECTION

Friday 14 October 1-5pm

Tuesday 18 October 11am-1pm

SALE DAY

Tuesday 18 October-1pm

120 POLL DORSET RAMS

HIGH INDEX LAMBPLAN FIGURES

20 WHITE SUFFOLK RAMS

Michael & Bernadette O'Sullivan

183 Mission Hill Road Baynton 3444

P: (03) 5423 7231 M: 0438 856 416

www.jewsharppolldorsets.com.au

BAYNTON

BORDER LEICESTER STUD

MISSION

WHITE SUFFOLK STUD

60 BORDER LEICESTER RAMS

Martin O'Sullivan 0429 524 057

Accredited Brucellosis Free, OJD Vaccinated.

Striving for consistent industry performing rams



METCALFE

WOODCHOP
& FAIR

Sunday

18 September

10am to 4pm

- \$5 Entry
- Children under 12 FREE

WOODCHOP
LIVE MUSIC
STALLS
CHILDREN'S
GAMES



Metcalfe Recreation Reserve
Malmsbury-Metcalfe Rd, Metcalfe

Editorial

Dear Readers

Quite a few local events happening in the next few months.

The Pavilion Art Show and Craft Market - front page info.

Metcalf Wood Chop and Fair Page 2 info

As of September 1st the new **Australian Fire Danger Rating System** see page 9 for info

Next printed edition will be December.

bridgeconnection.editor@gmail.com



Regina Bennett

Regina Bennett.

Editor: Regina Bennett

Ph: 0437514223

e: bridgeconnection.editor@gmail.com

Bridge Connection

- Mission Statement -

The mission of **Bridge Connection** is to bring people together by:

1. Providing information about local issues, goals and events, and to celebrate local achievements,
 2. Encouraging economic growth in the area
 3. Fostering geographic identity, and
 4. Providing a platform for public debate
- Bridge Connection is published by local people who volunteer, for local people as a **free paper** and on line at **redesdale.net** and via **face-book**



[facebook.comRedesdaleMiaMia](https://facebook.com/RedesdaleMiaMia)

BRIDGE CONNECTION COMMUNITY NEWSPAPER

Advertising Rates/Sizes

Size	Height x Width	Price per issue	10 Editions
Business Card	55mm x 90mm	\$25	\$250
Quarter Page	130mm x 90mm	\$50	\$500
Half Page	130mm x 190mm	\$95	\$950
Full Page	270mm x 190mm	\$175	\$1,750

Colour Advertisements plus 20%.

**Please Note:
COPY DEADLINES
20TH OF EACH MONTH**

Please send editorial or advertising copy to:
bridgeconnection.editor@gmail.com
or by post to **Regina Bennett 3465 Burke & Wills track Mia Mia 3444.**
For other editorial enquiries, please phone **0437 514 223**

Bridge Connection Distribution

950 Copies printed and distributed to Redesdale Mia Mia Region, including Barfold, Baynton, Derrinal, Elphinstone, Glenhope, Kyneton, Langley, Metcalf, Sidonia and Sutton Grange

Disclaimer: The Bridge Connection Inc. Committee wishes to advise that the views or remarks expressed in this publication are not necessarily the views of the volunteer Bridge Connection Inc. editorial or production team and no service or endorsement is implied by the listing of Advertisers, sponsors or contributors. Although every effort is taken in reproducing and printing advertisements correctly, we take no responsibility for errors.

Management Committee

President : Gloria Pocock

Secretary: Regina Bennett (03) 5425 5402
bridgeconnection.secretary@gmail.com

Treasurer: Marisa Leahy 0415 384 217

Magazine: Regina Bennett - Editor 0437 514 223



General Store Liquor Store

AUSTRALIA
POST

**Fully Electronic
Postage Service**

**Come in for some
great tasting...**



**Newspapers
& Groceries**

**Banking
Facilities**



**Full alcohol
licence and
bottle shop
with local
wines.**



**Takeaway
Food Service**



**Fuel
& Oil**



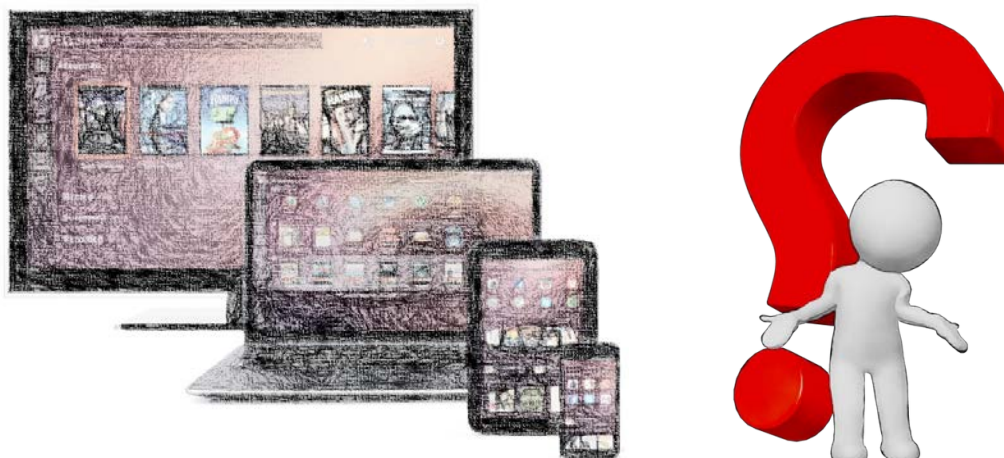
Hours:

**Monday to Friday 7am to 9pm
Saturday & Sunday 8am to 9pm**

RJ REDESDALE

**Phone (03) 5425 3154
2609 Main Road, Redesdale**

Complimentary Drop-In Digital Learning Sessions



It's no secret companies and the government want us to use our technology more. However, some of us find this a little daunting, and need a little hands-on guidance to be more engaged.

Redesdale Recreational Reserve Committee, in partnership with City of Greater Bendigo, is planning to arrange COMPLIMENTARY DIGITAL DROP-IN SESSIONS at the Redesdale Community Pavilion using the services of Computer Coaching of Bendigo.

- | | |
|--|--|
| <ul style="list-style-type: none">• Learn how to best use your devices.• Get assistance with internet issues.• Connect apps across all your devices.• Help with updating your software. | <ul style="list-style-type: none">• Understand how to use the internet for purchasing groceries, managing on-line accounts, pay utilities and other bills.• Learn how to use Face-time or Zoom with family and friends. |
|--|--|

It's yet to be finalised, however our plan is for this service to be available **2:00 pm to 5:00 pm on the first Wednesday of the month – commencing Oct. (6 months, excluding January 2023.)**

Your expression of interest will assist us in getting this approved, so drop us a line and we can keep you updated on progress.

Contact: Craig Newton 0408 890 060 3444reserve@gmail.com

The Prehistoric Crocodile

By Tahlia Campbell



Avoiding Extinction

These massive reptiles have been around since the time of the dinosaurs, and haven't evolved much since. In the Jurassic period, they came in a variety of species including those that ate plants, ran, and lived solely in water. The crocodile might seem like a simple creature, but it has a flexible lifestyle that has allowed it to outlive its prehistoric relatives like pterosaurs and other winged reptiles. The crocodiles that survived the catastrophic meteor and survived into the modern age were very versatile. Their ability to thrive in and out of water meant that survival was easier for them than most. But the biggest factor in their longevity was the fact that they have a cerebral cortex, something only mammals and a few select reptiles possess. The cerebral cortex is vital for memory, perception, and recognising patterns. This means that crocodiles are a lot more intelligent than we give them credit for. After all, it's not easy to be an apex predator.

Crocodile Biology

Crocodiles rose through the food chain by having advanced senses compared to their competition. Their eyes, ears, and nostrils are at the top of the head, so they can float near the surface of the water and scope out prey while still remaining hidden. As nocturnal hunters, they have great night vision and their sense of smell and hearing are excellent. A crocodile's jaws are lined with tiny black sensors, which can detect the slightest disturbance in the water. This gives them a very good advantage when hunting. Their bite is their most impressive feature. The crocodile has a bite force stronger than any other recorded animal, using a muscle that is almost as hard as bone. While they have incredible force when biting down, the muscle to open the jaw is surprisingly weak. Vets and other animal workers use simple tape to subdue them. Even a crab can hold a crocodile's jaw shut! I found that fact so fun that I drew a picture of it, which you can buy on RedBubble!

Hunting

Crocodile teeth are not equipped for tearing off chunks of flesh, like other predators. Instead, they use their bite force to clamp onto prey, keeping them from escaping, then engaging in the "death roll". The death roll is basically the crocodile's signature move, where it spins around so violently underwater that the prey becomes disoriented. This can cause the prey to drown, or snap their neck from the motion. They also use this death roll to assert dominance over other crocodiles.

Behaviour

Crocodiles are actually the most social of reptiles. They don't form groups necessarily, but they aren't overly territorial and will put up with each other quite peacefully. Crocodiles are also the most vocal reptiles! Babies make an adorable peeping sound, and adults make a variety of noises including bellows, hisses, and screeches.

Baby crocs break through their eggs with a "milk tooth" made from their skin. Then, their mother piles them into her mouth to safely deliver them to the water, as hatchlings are easy prey for birds. A crocodile mother is very protective of her young, and will guard them for months.

Extras

It's hard to know how long crocodiles live, but scientists use growth rings in their teeth to predict that they can live around 60-70 years.

Crocodiles appear in many mythologies, but my favourite is the Egyptian goddess Ammut. She is a funerary deity with the head of a crocodile, the forelegs of a lion, and the back legs of a hippo. In the Ancient Egyptian afterlife, your heart was weighed against a feather on a scale. If the heart was impure and outweighed the feather, Ammut would eat it and doom the soul to wander eternally. Ammut embodied everything the Ancient Egyptians feared, being a combination of their three deadliest animals.

Tahlia Campbell is a freelance writer.

You can find more of her work at

www.chronically-crafting.com

Acting Principal: Andrew King

Phone: 5425 3155

Email: redesdale.mia.mia.ps.ps@education.vic.gov.au

Redesdale Mia Mia Primary School

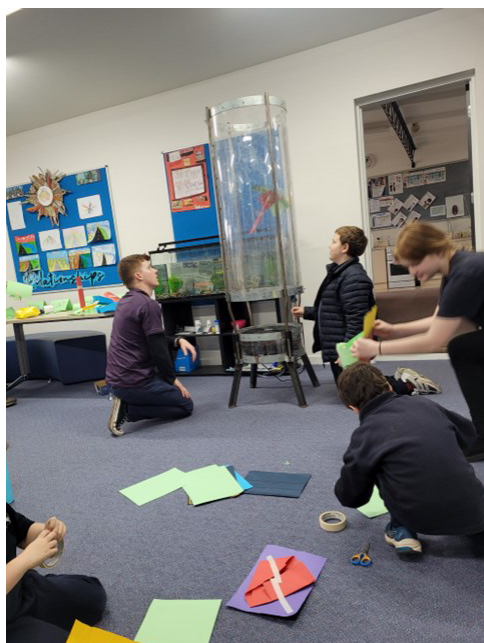


School News

Respect, Resilience & Relationships

Last week our student travelled to Bacchus Marsh to participate in 3/4 camp along with students from other small schools. Over the three days, the students participated in a variety of fun and engaging activities and according to our students, 'made heaps of new friends.' They also participated in a variety of activities, including:

- Making pizza
- Canoeing
- The flying fox
- Made damper
- Heaps of games
- Did the dishes
- Watched a movie
- Orienteering
- Scavenger hunt



Earlier last week, we were fortunate enough to have two educators from Scienceworks in Bendigo come out to our school. Kendal and Harry came out with their wind tunnels. Students were able to explore how different objects reacted when placed in a wind tunnel. They predicted outcomes, designed multiple objects and worked well to make items that would hover, sink and stick. The students had so much fun and loved this learning experience.

Please contact the school for 2023 enrolment information to be a part of our wonderful school.

Campaspe River Update...

The Kyneton WRP Licence Amendment

Public feedback closed on August 19th or 24th depending on which website you viewed, CW or the EPA. For information from the EPA website on the licence application process, go to... Home > About EPA > What we do > Managing the works approvals and licencing system > Comment on licence applications > Coliban Region Water Corporation (APP015649).

The email address for EPA is

northwest.mailbox@epa.vic.gov.au

Those that provided feedback included members of the public and organisations e.g., The Australian Platypus Conservancy, that are concerned for the ecosystems that rely on the river, landowners, both those who have been specifically disadvantaged by substandard water quality and those who value healthy waterways and want to avoid future incidents of contamination, and recreational users of the Campaspe. There are many concerns.

The process now is...

1/ EPA to provide all public feedback to the applicant.

2/ Coliban Water to review and respond to any comments received.

3/ Feedback collected and collated by Coliban Water will be provided to the EPA and considered as part of their Licence Assessment process. 4/ EPA to make a decision on the

operating licence amendment application.

Snipes Creek Rehabilitation at last!

Plans to rehabilitate the creek have been in the pipeline for years, with those living along the waterway suffering consequences of contaminated water for decades. "Coliban Water, who were recently convicted in the criminal courts for polluting the Campaspe River, used Snipes Creek as a dumping ground for years, right up to 2016 regardless of the EPA withdrawing their licence in 2007," landowner Kim said. "With the help of Biolinks Alliance we have installed leaky weirs to slow down the flow of water and create pools, we have fenced the creek off from livestock and have started to re-establish the aquatic and creek line vegetation, which is all designed to filter and clean the water before it reaches the Campaspe River." He hopes the project can demonstrate a way to repair the whole creek but he stresses that it will need to be in conjunction with ensuring no more wastewater is released into it. Kyneton Primary School's Sustainability Group were among the volunteers that worked on the creek. With the rain we've had, the plantings have been well watered in and the Campaspe is flowing freely as seen from the bridge recently.



You are warmly invited to

BARFOLD

COMMUNITY CHURCH

Meets 10.00 am

2nd – 5th Sundays each month

followed by morning tea

at Barfold Union Church

Heathcote-Kyneton Rd, Barfold

Contact; Leigh 0425812786



COMMUNITY DEFIBRILLATOR

Located on the side of the Redesdale fire station
Access code is 3444 (Redesdale post code)

DEFIBRILLATOR

The Community owned defibrillator
is now accessible to all
community members.

It is situated on the
outside wall of the CFA building



UNITING CHURCH

10am Start

Morning Tea is shared before each service at 9.40



Church Services for September 2022

Metcalfe Sunday 12th September

No service at Sutton Grange as the
Cemetery 150 years is on Oct 2nd
Morning tea at 9.30am and Service at
10.00am

**Check the Macedon Ranges Uniting
Church Website for extra news**

For more information go to

www.macedonrangesunitingchurch.org.au

CATHOLIC CHURCH

Redesdale 2nd Sunday of each month 11am

Turn your house
into a home
with Tucks
locally made products



- Aluminium and Timber Windows
- Window Replacements • Security Doors
- Shower Screens • Wardrobe Doors

We are in your area regularly
and offer a **FREE** measure
and quote service.

We can offer supply and install prices.



**Tucks
Windows
BENDIGO**

Celebrating 43 Years
providing top quality
products and
professional
friendly service.

P: 03 5446 8855

E: quotes@tuckswindows.com.au

www.tuckswindows.com.au

As of September 1st The new Australian Fire Danger Rating System

will have four levels with action-oriented messages, logical colours and simple descriptions to encourage people to take action to protect themselves and others in the face of bushfire risks.

#AFDRS #CFA #CommunityInformation #firesafety

Smoke alarms.

The recent fatality figures compiled by the CFA show where and how fire related deaths occur. For all the time and effort we put into preventing and fighting Bushfires, the most common cause of a fatality is being in a bedroom during a house fire.

Statistics show that you are 4 times more likely to die in bed with no bedroom smoke alarm fitted than with one. Even the hallway or lounge room smoke alarm may not be enough to wake someone through a closed bedroom door, if they are in a deep sleep or already affected by smoke.

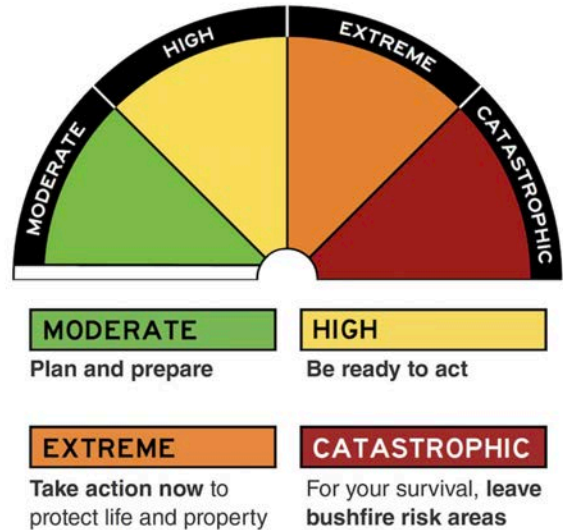
Thankfully due to Lithium battery technology we have smoke alarms that last 10 years. No more "change your clock, change your smoke alarm battery" or having a draw full of 9 volt energizers. Even installation is easier with some brands having self adhesive Velcro tape instead of screws.

The CFA is so invested in getting smoke alarms out there that they have purchased a number to give to members of the community who, for what ever reason, are unable to purchase their own. Installation courses are also offered to CFA members to help those who are unable to fit or even test their smoke alarms.

If you or someone you know need assistance in purchasing or fitting a smoke alarm please contact me on **0428253104**.

Having a working smoke alarm is good but having one in your bedroom as well is even better.

Regards, Andrew Campbell.
Fire Prevention Officer



creative designs for your business

logos menus flyers posters
invitations brochures magazines
business cards advertisements
letterheads with compliment slips
full business imaging

lyn ingles | graphic designer
blupen@bigpond.com
0429 911 980

Proudly Sponsoring assistance to the 'Bridge Connection'







CV SHEDS

Est. 1975

Quality supplier and installer of:

- Farm Sheds - Work Shops
- Hay Sheds - Garages/Barns
- Quality RHS Frames
- All Australian Steel
- Shed Materials - purlins/ sheeting also available

Been Building sheds in Central Victoria for over 40 years

Come and visit us at 12 Bourke St Kyneton
Mon- Fri 8 am to 4.30 pm, other times by appointment
03 5422 6644 or info@cvsheds.com.au www.cvsheds.com.au




REGISTERED Building Practitioner



Ballan Local Farmers and Makers Market.
2nd Saturday of every month. **9.00 - 1.00pm**

Castlemaine. Local Farmers Market.
1st Sunday of every month. **9.00 - 1.00pm**

CFM. Weekly Market, Wednesday. **2.30 - 5.30pm**

Clunes. Local Farmers Market
2nd Sunday each month. **8.30 - 1.00pm**

Creswick. Local Farmers Market
3rd Saturday every month. **9.00 - 1.00pm**

Daylesford. Local Market.
Every Sunday. **8.00 - 3.00pm**

Gisborne. Olde Time Market.
1st Sunday every month. **9.00. - 2.00pm**

Kyneton. Local Farmers Market.
2nd Saturday every month. **8.30 - 1.00pm**

Lancefield. Local Farmers Market.
4th Saturday every month. **9.00 - 1.00pm**

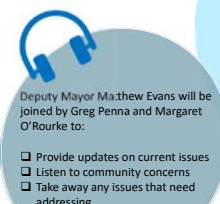
Maldon. Local Farmers Market.
2nd Sunday every month.

Malmsbury. Local Farmers Market.
3rd Sunday every month. **9.00 - 1.00pm**

Talbot. Local Farmers Market.
3rd Sunday every month. **9.00 - 1.00pm**

Trentham. Local Farmers Market.
3rd Saturday every month. **9.00 - 1.00pm**

Woodend. Local Farmers Market
1st Saturday every month. **9.00 - 1.00 pm**



Eppallock Ward Listening Post

Saturday 10th September, 2022
10.45am – 12.15pm

@ The Community Pavilion
Agnes Mudford Reserve



*** SUTTON GRANGE CEMETERY *** Celebrating 150 years 1870–2020

Sunday 2nd Oct at 10.30am at the cemetery (weather permitting if not Sutton Grange Uniting Church)

An official book launch will take place at 11.30 am

Lunch will follow at the Hall at 1pm. Please bring a plate to share.

SUTTON GRANGE CEMETERY



**Celebrating 150 years
1870–2020**

RSVP or Queries to
suttongrangepcemetery@gmail.com

creative
designs
for your
business

logos menus flyers posters
invitations brochures magazines
business cards advertisements
letterheads with compliment slips
full business imaging

lyn ingles | graphic designer
blupen@bigpond.com
0429 911 980

Proudly Sponsoring
assistance to the 'Bridge Connection'



Elphinstone

Post Office & General Store

*'In the heart of the
Elphinstone community'*



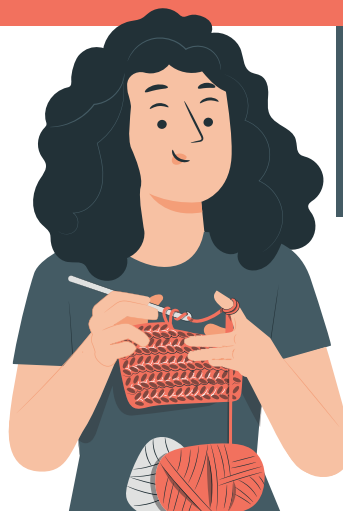
- Newspapers/ Magazines
- Origin Gas Bottles
- Bread • Milk & Groceries
- Postage Services

*'The General Store where
community meets business.'*

Gill & Dave (03) 5473 3200
9 Bateman Street, Elphinstone

Knitting & Crochet

GROUP



Get back to
Knitting or
Crochet...

- Learn new techniques
- Learn to Knit or Crochet
- Possible Knitting and Crocheting for charity

**Every Thursday 1pm - 3pm
at the Redesdale Reserve Pavilion**

If you are interested in joining please contact:
Gloria Pocock: gapocock@bigpond.com or
Regina Bennett: reginabennett@bigpond.com

Have you ever wanted to learn to play
Bridge



Expressions of interest

if you are interested in playing or learning
to play bridge contact
Pan on 0409779452

SUPPORT YOUR ADVERTISERS

'THE BRIDGE CONNECTION COMMUNITY NEWSPAPER'

...is **supported** by **local businesses**
and it is important, in return
for the community to **support them**.

For rural regions to succeed in business
they need the 'locals' to keep them viable
by conducting business in our township.
So! next time you need something for a job
that you are working on... look to the
'**Bridge Connection**' and give
a **LOCAL BUSINESS** a try.

**BUY LOCAL
WHERE YOU
ARE ABLE TO.**

**SUPPORT THE TOWN THAT
SUPPORTS YOU... THANK YOU!**



To advertise in the '**Bridge Connection**'
please contact the Editor

Regina Bennett on: **0437 514 223** OR email
bridgeconnection.editor@gmail.com



July Rain Fall

The average yearly rainfall for **Redesdale** is about 601mms.

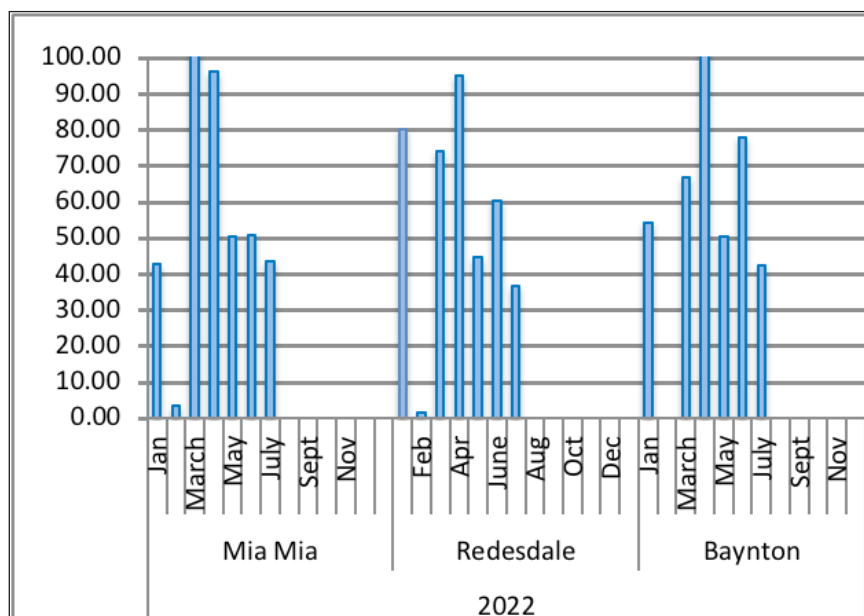
Thank you to **Helen Bennett** for the
Mia Mia readings & **Belinda Ryan** for
Baynton readings

Redesdale 36.40mm Year to date 391.00mm

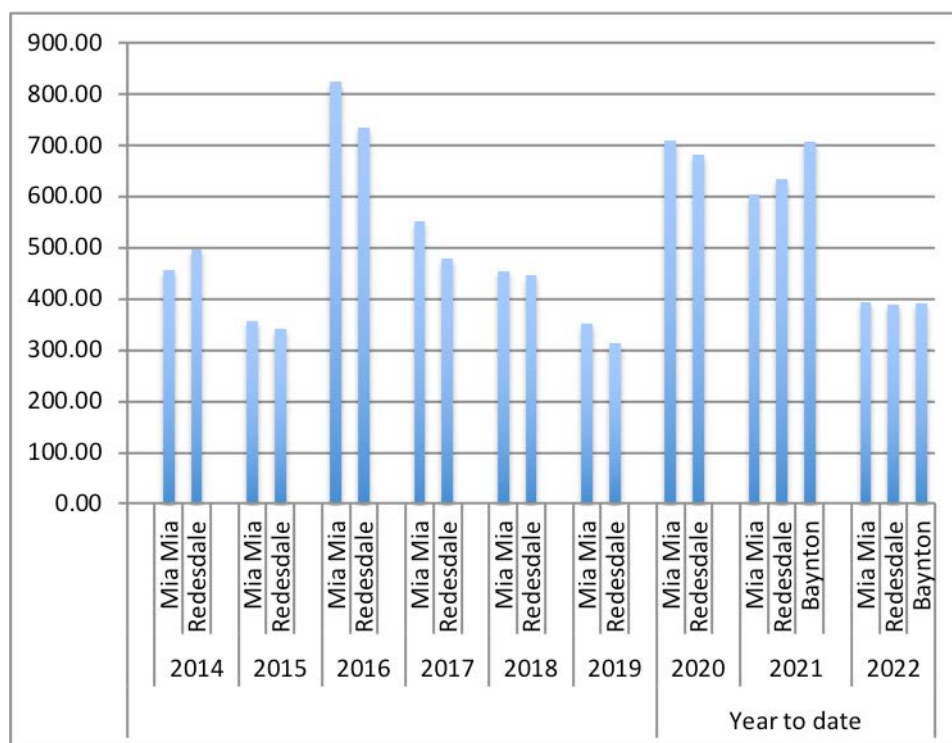
Mia Mia 43.50mm Year to date 3395.75mm

Baynton 42.2mm Year to date 393.2mm

Year Totals for Previous Years



2016	Mia Mia	826.00
	Redesdale	735.40
2017	Mia Mia	551.75
	Redesdale	479.60
2018	Mia Mia	455.00
	Redesdale	448.40
2019	Mia Mia	352.00
	Redesdale	315.00
2020	Mia Mia	711.25
	Redesdale	682.85
2021	Mia Mia	593.50
	Redesdale	634.40
	Baynton	707.80



PROUD SUBSCRIBER OF
Bridge Connection



Steph Ryan MP

Member for Euroa Deputy Leader of The Nationals
StephRyan.com.au
25 Bridge St, Benalla 03 5762 1600

Nationals move to protect farmers from FMD

The Nationals have moved in State Parliament to protect Victorian farmers from the increased risk of a foot-and-mouth disease (FMD) incursion, with a Private Member's Bill seeking to overturn Labor's new riverside camping laws.

The Nationals Member for Euroa Steph Ryan said The Nationals had introduced their Bill to give farmers the right to veto camping on riverside grazing licenses as well as giving the government the power to prohibit riverside camping altogether if recommended by the Chief Veterinary Officer.

"The Nationals and Liberals opposed the Labor Government's Crown land riverside camping rules from the get-go, in part due to our concerns about biosecurity on farms.

"With the heightened risk of an FMD incursion from Indonesia, it is even more important to ensure that farmers who have Crown land frontage can protect their property and stock. That's why we introduced legislation to this effect and it was very disappointing that the Labor Party not only didn't support it but used its numbers in State Parliament to even prevent it being debated."

Ms Ryan said The Nationals had sought and received a briefing from Agriculture Victoria and the Chief Vet on Monday and would continue to pressure the Government to ensure the necessary plans and resources are in place to deal with any prospective outbreak.

"There is no need for panic about the prospect of foot and mouth coming into Australia from Indonesia, but we must be absolutely on our guard and ensure that both federal and state governments do everything in their power to prevent any incursion.

"It is estimated that a foot-and-mouth disease outbreak would cost more than \$80 billion in Australia and there is no doubt the threat is weighing on the minds of farmers and rural people generally.

"We want to ensure that the Government is doing everything it can to prepare for any incursion and make sure if it does occur that it can be stamped out very quickly.

"It's disappointing that Labor has chosen to stick with its flawed riverside camping rules which are just another risk for farmers throughout the state."

Media contact: Steph Ryan – 5762 1600 or steph.ryan@parliament.vic.gov.au



Federal Member for Bendigo
LISA CHESTERS MP



PO Box 338 Bendigo 3552
Cnr Williamson & Myers Sts, Bendigo 3550
T: 034 5443 9055 • F 03 5443 9736
E: Lisa.Chesters.MP@aph.gov.au
@LMChesters • /LisaChestersBendigo

Dangerous Local Roads Set for Upgrades Under Black Spot Program

Funding under the Australian Government's Black Spot Program will substantially improve 47 dangerous crash sites on Victorian roads in 2022–23.

The state will receive \$18.4 million under the Black Spot Program's 2022–23 funding round, including almost \$2.2 million for the Bendigo electorate.

The local funding includes \$1,200,847 for Fogartys Gap Road at Ravenswood South, one of the most dangerous roads in the electorate.

Member for Bendigo, Lisa Chesters said the funding will be welcomed by the whole community.

"I'm relieved to announce funding to upgrade Fogartys Gap Road, this stretch of road has seen three fatalities in recent times," Chesters said.

"In announcing these new projects, this Government recognises the importance of working with the Victorian Government to partner with local councils to deliver the program in the state.

"This Government is investing in road safety right across the nation to ensure Australians get home safely every trip," Chesters said.

The Black Spot Program funds safety measures such as traffic signals and roundabouts at locations where a number of serious crashes are known to have occurred, or are at risk of occurring.

The 47 Black Spot projects across Victoria will make an important contribution towards reducing serious injuries and deaths on local roads, and build on previous investments in the state.

Black Spot Consultative Panels provide the opportunity for stakeholders to have a say in the project selection process, and ensure that nominations of the highest priority and importance to the local community are recommended for approval.

Ms Chesters has recently been appointed Chair of the Victorian Black Spot Consultative Panel.

For more information on the Australian Government's Black Spot Program, or to nominate a black spot, visit investment.infrastructure.gov.au/funding/blackspots.

Ryan seeks guarantee on Colmont registration, calls for Broadford investment

The Nationals Member for Euroa Steph Ryan is calling on the Andrews Government to guarantee it won't strip Colmont School of its registration until all options are canvassed.

Speaking in Parliament today Ms Ryan said an assurance the VRQA would not cancel the school's registration would provide more leeway to see whether an alternative could be found.

"I have sought a guarantee from the Andrews Government that it will not strip the school of its registration until every avenue to save it has been explored," Ms Ryan said.

"The school has appointed new administrators who are currently analysing the books, but locals are concerned that the VRQA will cancel the school's registration."

Ms Ryan also raised concerns about the government's claims about the level of support on offer to local students entering secondary schools in the region.

In the days following the sudden closure of Colmont Education Minister Natalie Hutchens stated: 'Certainly we do have capacity at schools in the region to pick up anyone that needs a class, for both primary and secondary schools.'

"This is simply not true of local public schools. Broadford Secondary College has already turned away more than 30 prospective students for next year and, with a capacity of 825 students, the school is under significant pressure," Ms Ryan said

"The government is holding the school hostage by refusing to invest if it takes students from outside its catchment. That has left local parents struggling to explain to their distressed kids why they can't attend same school as their friends next year."

Ms Ryan said Broadford Secondary College's catchment was defined by an arbitrary line drawn through Kilmore.

"This means some students who attended Broadford Primary are now unable to go to school with their friends at Broadford Secondary College," Ms Ryan said.

"With no public secondary school in Kilmore, Broadford needs urgent investment in its facilities to accommodate the growth that is occurring through the Hume corridor.

"The Andrews Government hasn't even undertaken a masterplan at Broadford Secondary to ensure the school is in the pipeline for funding to improve buildings and expand capacity.

"The school's facilities are old and dated. It's high time local kids are given the learning environment they deserve."

Media contact: Steph Ryan – 5762 1600 or steph.ryan@parliament.vic.gov.au



We can spread **any** amount that you supply, usually off the ground via industrial loader. We can also get a **bulk** load and deliver to a number of smaller properties if required.

FERTILISER SPREADING SERVICE



Contact for a quote

Please contact
Carl 0412 144 936
or **David 0427 546 586**

No job too small, no job too big,

email: carl@glendarling.com.au
119 Darlington Road Baynton VIC 3444

Proudly printed in Kyneton

Castlemaine, Kyneton & Gisborne

CopyCentre

Printing together for our community

Design & Pre-press
Plan Scanning, Finishing Services.

*Not just a Copy Centre...
we are so much more.*



www.windarring.org.au

58 Mollison Street
Kyneton
03 5422 2400

Redesdale Ramblings

Daffodils in September

Daffodils are synonymous with September even though they start flowering well before that. The main flowering however happens now with many of the “standard” daffs coming into bloom.

The RHS (Royal Horticultural Society) in the UK recognise different classifications or “Divisions” for Daffodils, numbering from 1 to 12, with a 13th Division for natural species.

1 – These are the “Trumpets” – what most people think of when you say “Daffodils” where there is a funnel shaped cup in the middle of the flower and the length of this cup is equal to, or longer than the surrounding ring of petals (or “perianth”). The petals are usually white or yellow, though some new varieties have been bred with the petals suffused with pink! The cup can be white, yellow, orange or pink and the colours can be “solid” or a gradation from one colour to another along the length of the cup.

2 – Large Cups – the cups of these are not as long as the petals but more than 1/3 of the length. Some robust varieties can be mistaken for Div 1s but judges at the Shows will measure them to ensure they are exhibited in the correct class! Some of the showiest flowers are in this Division and make excellent garden subjects.

3 – Small Cups – these have cups less than 1/3 the length of the petals. Most of these are descended from *Narcissus poeticus*, “The Poet’s Daffodil” or “Pheasant’s Eye” which has bright white petals and small cups of orange-red.

4 – These are the doubles and confusingly any double daffodil is included in this Division regardless of what other division it would be in, such as ‘White Marvel’ which is a double form of *Narcissus triandrus* which is in Div 5. Or ‘Erlcheer’ which is a double Tazetta (Div 8).

5 – These are derived from *Narcissus triandrus* which has 2 or more florets in a head which nod and look quite dainty.

6 – *Narcissus cyclamineus* is the most distinctive because the petals are so reflexed that they make a straight line with the long trumpet – its hybrids display a similar reflexed habit, though not all are as extreme.

7 – *Narcissus jonquilla* – these are the “true jonquils” – there are usually 2 or more florets which are typically sweetly scented.

8 – Tazettas are the multi-headed, strongly scented narcissus which for some reason usually get called “jonquils” in Australia. The most easily recognised are the yellow and orange ‘Soleil d’Or’ and the pure white *Narcissus papyraceus*, called “Paperwhites” (technically this one belongs in Div 13).

9 – Poeticus hybrids are distinct from Div 3 in that they are closer to the species and the cup is not more than 1/5 the length of the petals.

10 – The Hoop Petticoats or *Bulbocodium* hybrids are small, usually single flowered varieties derived from a range of narcissus found from Spain through to Morocco, with thin grassy foliage and flowers with inflated cups (reminiscent of the hoop petticoats of the Victorian age) and thin petals.

11 – The Split Cups – a group which divides the daffodil loving community! The cup is flat and can be split (11a) with the segments interspersed with the petals or sitting upon the petals (11b).

12 – This is a relatively new section where the intersectional hybrids have been placed. Daffodils can be hybridised across the divisions and those that don’t conform to the descriptions for a particular division end up here. ‘Tete-a-tete’ used to be considered a Div 6 but has been relegated to Div 12 – important to know when placing them in the right section at a Show.

Daffodils are further classified as Standard, Intermediate and Dwarf or Miniature – depending on their size. These descriptions are important for Flower Shows such as the one held by the Kyneton Horticultural Society during the Annual Daffodil Festival.

However they are not important to the pleasure we get from all the different *Narcissus* which we can enjoy in our gardens or can grow in pots.

As the flowers open it’s a good time to feed the bulb so that it can store up energy to bloom the following year. The best way is to spread Potash in the form of Potassium sulphate around the base. It’s also important to allow the foliage to die down naturally to let the food stored in the foliage to be absorbed by the bulb. Cutting off the foliage can reduce that food and can diminish next year’s flowers. If you can’t stand the look of the dying foliage at least leave them for 8 weeks after the flowers, when they will have served their purpose.

Cheers

Fermi

The Redesdale Rock Gardener



Red Aria’ a large cup



Slip Slop' a split cup 11a



Narcissus 'Fencourt Jewell' a pink tazetta Div 8



Narcissus 'Wubwub' Division 10

The Redesdale Hotel



Classic Country Pub Dining

**For bookings
please call (03) 4405 0601**

Monday - Closed

Tuesday - Closed

Wed to Sun • Lunch 12noon - 2.30pm

• Dinner 6pm - 8.30pm

The Redesdale Hotel

2640 Heathcote-kyneton Road

Redesdale, Vic, 3444

info@theredesdalehotel.com.au



The Redesdale Hotel



redesdalehotel

www.theredesdalehotel.com.au

**creative
designs
for your
business**

logos menus flyers posters
invitations brochures magazines
business cards advertisements
letterheads with compliment slips
full business imaging

lyn ingles | graphic designer
blupen@bigpond.com
0429 911 980

Proudly Sponsoring
assistance to the 'Bridge Connection'



Quote of the month:

*"Knowledge is knowing a tomato is
a fruit; wisdom is not putting it in a
fruit salad." ~*

Unknown

LOCAL REDESDALE / MIA MIA - CONTACT LIST

<https://www.redesdale.net>

FIRE REPORT A FIRE 000

**VIC BUSHFIRE INFO LINE
1800 226 226**

REDESDALE FIRE BRIGADE

- Captain Mitchell Noonan 0439 769 985
- Secretary Geoff Thomas 0429 143 490



MIA MIA FIRE BRIGADE

- Captain Calvin Millard 0409 979 037 A/H: 9744 6745
- Mia Mia Fire Brigade Secretary - Steve Cadasch 5425 5548

LOCAL ORGANISATIONS

BRIDGE CONNECTION MAGAZINE

Editors: **Regina Bennett** 0437 514 223

Bridge Connection President - Gloria Pocock

Bridge Connection Treasurer - Marissa Leahy

MIA MIA MESSENGER Enquiries 5425 5565

Mia Mia Hall Committee - Wendy Hulls 5425 5590

Mia Mia Mec. Inst. Secretary - Wendy Hulls 5425 5590

Mia Mia Mec. Inst. President - Anthony Ryan 5425 5578

Mia Mia Reserve Comm. Secretary - Anthony Ryan 5425 5578

Mia Mia Reserve Comm. Chairperson - Grant Hulls 5425 5590

Otis Foundation 5444 1184

Redesdale and District Assoc. Inc - Lin Newton 0418 583 304

Redesdale Hall Committee - C. Boyd (Sec) 5425 3194

Redesdale Hall Hire - C. Boyd (Sec) Redesdale 5425 3194

Redesdale Rec. Res. Cttee - Craig Newton 0408 890 060

email: 3444reserve@gmail.com

Suicide Bereavement Service - 'Standby' 0439 173 310

Tennis Club - Linda Newnham 0400 554 716

TOWNSHIP BUSINESSES

Redesdale Hotel - Beth & 03 4405 0601

Garth Redesdale General Store 5425 3154

The House Gallery - Joyce 0408 154 315

COUNCILLORS

City of Greater Bendigo - Eppalock Ward

Matthew Evans 0437 867 028

Marg O'Rourke 0429 061 096

Greg Penna 0429 721 958

POLITICIANS

Federal Member for Bendigo - Lisa Chesters (Labor) 5443 9055

State Member for Euroa - Steph Ryan (Nationals) 5762 210

SCHOOLS

Redesdale Mia Mia Primary School 5425 3155

Kyneton High School 5421 1100

HEALTH SERVICES

Bendigo Health 5454 6000

Heathcote Health 5431 0900

Kyneton Health 5422 9900

Royal Flying Doctor Community Transport
(Heathcote) 5431 0900

TOURIST INFORMATION CENTRES

Heathcote Visitor Centre 5433 3121

Bendigo Visitor Centre 1800 813 153

Kyneton Visitor Centre 1800 244 711

REGULAR ADVERTISERS

Connolly Glass 0428 535 101

Lisa Chesters 5443 9055

The Optometrist 4411 6802

Palmer Steven & Rennick 5422 6500

Redesdale Hotel 4405 0601

Redesdale General Store 5425 3154

Fertiliser Spreading Service 0412 144 936
or 0427 546 586

Steph Ryan 5762 2100

Tucks Windows 5446 8855

William Farmer Funeral Directors 5441 5577

ORGANISATIONS

City of Greater Bendigo 5434 6000

Macedon Ranges Shire 5422 0333

Mitchell Shire Council 5734 6200

Mount Alexander Shire 5471 1700

POWERCOR 132 412

SPONSORS *Without their support our community would not thrive - Thank you!*

blue pencil publishing	0429 911 980	Kyneton Copy Centre	03 5422 2400
Elphinstone Post Office & Store	03 5473 3200	Kyneton Veterinary Hospital	03 5422 1099
Heathcote Community Bank	1300 236 344	Redesdale General Store	03 5425 3154

Rochester's young horse and pony lovers are honing their riding skills since the creation of a new soft fall sand arena at the Rochester and District Horse and Pony Club, thanks to being awarded a FGM Community Grant.



Fosterville Gold Mine Community Grants – applications now open

The Community Grants Program aims to support initiatives which actively contribute to the growth of our local communities both now and into the future.

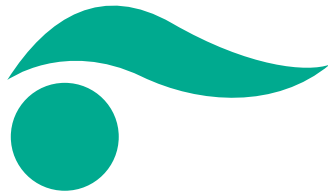
Applications open
Friday 26 August at 9am
and close Monday 26
September at 5pm



AGNICO EAGLE
FOSTERVILLE

W: fgmcommunity.com.au

E: fgm.community@agnicoeagle.com



KOSMAC & CLEMENS OPTOMETRISTS

Open for appointments

Tuesday, Wednesday & Friday

- Eye Testing
- Over 400 frames
- Contact Lenses



59 High Street Heathcote

For appointments
please phone 4411 6802

NOW IN HEATHCOTE

KYNETON VETERINARY HOSPITAL



Send us a picture of your very special pet and a few words to describe him or her and why you love your pet so much.

Send to: bridgeconnection.editor@gmail.com

A prize at the end of the year will be awarded for the best entry.



4 Week old Jack Russell Puppies Puppy 1 Boy, Puppy 2 Girl, Puppy 3 Girl

Puppies 1 and 3 are for sale will be Vet checked Vaccinated and microchipped
contact Matt on 0400590526 for more info

KYNETON VETERINARY HOSPITAL
Call us today 5422 1099

'Where animal lovers heal'

Palmer Stevens & Rennick Barristers & Solicitors

Founded 1852



Palmer Stevens & Rennick

provide advice to clients all over Australia.

- Powers of Attorney
- Wills and Estates
- Criminal Law
- Conveyancing
- Property Law
- Family Law
- Agribusiness Law
- Commercial Litigation
- Traffic Law and Toll Fines
- Appearing in all Courts
- Pre purchase advice for large Agribusiness Assets
- Compensation for Government Acquisitions



Mr Joseph Palmer
Founder of
Palmer Stevens & Rennick

8 Jennings Street, Kyneton

or P.O. Box 1, Kyneton Vic 3444

Phone: (03) 5422 6500 Fax: (03) 5422 3385

Email: psr@psr.net.au

A good life deserves the best farewell

 **WILLIAM
FARMER**
FUNERAL DIRECTORS

Andrew and Heather Hampton

151 McCrae Street Bendigo
12 Victoria Street Eaglehawk

P: 5441 5577

www.williamfarmer.com.au

A tradition that continues...