



ISSUE NO. 135 December 2022

For the Mia Mia- Redesdale Region including:

- Heathcote • Derrinal • Glenhope • Baynton • Sidonia • Barfold
- Langley V Sutton Grange • Elphinstone • Kyneton • Metcalfe

BRIDGE CONNECTION COMMUNITY NEWSPAPER

Redesdale Community Hall & Pavilion *...open for business...*

Coming soon...
Open house to 'relaunch' the Hall
and welcome everyone back to
a great space for all to enjoy.

Redesdale Community Hall

We welcome you
and look forward to
assisting you with your
next event and see our
local facilities being
utilised.

The Pavilion

With COVID behind us and new opportunities ahead, the Hall is now available for hire.

What you can enjoy:

- ✓ 200sqm, including a large stage
- ✓ Fully equipped (class 2, catering) kitchen
- ✓ Foyer area
- ✓ Internal toilets
- ✓ Undercover BBQ area
- ✓ Tables and chairs for 100 people
- ✓ Plenty of carparking

Redesdale Community Hall



Looking for somewhere for your next **Fundraiser, Birthday, Special Anniversary, Meeting, Christmas, Movie night? Weddings, parties...anything!**
Looking for somewhere to bake up your jams, chutneys and other local produce?
Our new kitchen could be just the place.
Small fee to cover costs.

The Pavilion



If you are looking for a smaller venue...!
consider the Pavilion – carpeted, air-conditioned
and outdoor seating available.
Call to discuss your requirements.

**Come and meet us to inspect our wonderful facilities
and inquire about terms for hiring either venue.**

Call Debbie Graetz 0410 587 899
or Email: 3444rch@gmail.com

Beginner Watercolour Course

with

Jane Rusden

Redesdale Pavilion Feb to April 2023

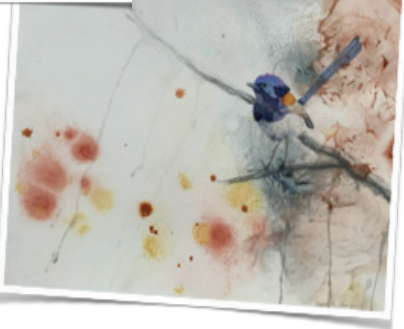


There will be 6 fortnightly sessions from Feb 2nd to April 14.

Places are strictly limited.

Cost \$180 for course of 6 sessions.

For more information and to book your place call:
0407 116 899



MIA MIA Christmas Party

**Dec 11th
at The Flat,**

**4pm onwards
BYO everything.
If it is wet we will
go to the hall.**



Grassfires move so quickly, it's **impossible** to outrun them.

This summer, significant pasture growth in paddocks and roadsides means that fast-moving grassfires will be a serious risk across Victoria. Rural grassfires can be just as dangerous as bushfires, and can actually spread even faster, travelling at speeds of up to 25km/h. If you live close to open paddocks or grasslands, you could be at risk and need to be prepared. On Extreme or Catastrophic Fire Danger Rated days, the safest option is to leave early.

How well do you know fire?

Plan. Act. Survive. Go to vic.gov.au/knowfire

Authorised by the Victorian Government, 1 Treasury Place, Melbourne



Editorial

Dear Readers

This is the last edition for the year. Our next edition is in March 2023 next year.

We really enjoy articles from our community so please get writing over the summer!

We will be soon have a post box outside the hall where you can post your contributions if you would rather do that than email.

Have a happy and safe Christmas and we will see you in the New Year.

bridgeconnection.editor@gmail.com



Regina Bennett

Regina Bennett

Editor: Regina Bennett

Ph: 0437514223

e: bridgeconnection.editor@gmail.com

BRIDGE CONNECTION COMMUNITY NEWSPAPER

Advertising Rates/Sizes

Size	Height x Width	Price per issue	10 Editions
Business Card	55mm x 90mm	\$25	\$250
Quarter Page	130mm x 90mm	\$50	\$500
Half Page	130mm x 190mm	\$95	\$950
Full Page	270mm x 190mm	\$175	\$1,750

Colour Advertisements plus 20%.

**Please Note:
COPY DEADLINES
20TH OF EACH MONTH**

Please send editorial or advertising copy to:
bridgeconnection.editor@gmail.com
or by post to **Regina Bennett 3465 Burke & Wills track Mia Mia 3444.**
For other editorial enquiries, please phone **0437 514 223**

Bridge Connection Distribution

950 Copies printed and distributed to Redesdale Mia Mia Region, including Barfold, Baynton, Derrinal, Elphinstone, Glenhope, Kyneton, Langley, Metcalf, Sidonia and Sutton Grange

Disclaimer: The Bridge Connection Inc. Committee wishes to advise that the views or remarks expressed in this publication are not necessarily the views of the volunteer Bridge Connection Inc. editorial or production team and no service or endorsement is implied by the listing of Advertisers, sponsors or contributors. Although every effort is taken in reproducing and printing advertisements correctly, we take no responsibility for errors.

Management Committee

President : Gloria Pocock

Secretary: Regina Bennett (03) 5425 5402
bridgeconnection.secretary@gmail.com

Treasurer: Marisa Leahy 0415 384 217

Magazine: Regina Bennett - Editor 0437 514 223

Bridge Connection

- Mission Statement -

The mission of **Bridge Connection** is to bring people together by:

1. Providing information about local issues, goals and events, and to celebrate local achievements,
 2. Encouraging economic growth in the area
 3. Fostering geographic identity, and
 4. Providing a platform for public debate
- Bridge Connection is published by local people who volunteer, for local people as a **free paper** and on line at redesdale.net and via **face-book**



[facebook.comRedesdaleMiaMia](https://facebook.com/RedesdaleMiaMia)



General Store Liquor Store

AUSTRALIA
POST

**Fully Electronic
Postage Service**

Come in for some
great tasting...



**Newspapers
& Groceries**

**Banking
Facilities**



**Full alcohol
licence and
bottle shop
with local
wines.**



**Takeaway
Food Service**



**Fuel
& Oil**



Hours:

**Monday to Friday 7am to 9pm
Saturday & Sunday 8am to 9pm**

RJ REDESDALE

Phone (03) 5425 3154
2609 Main Road, Redesdale

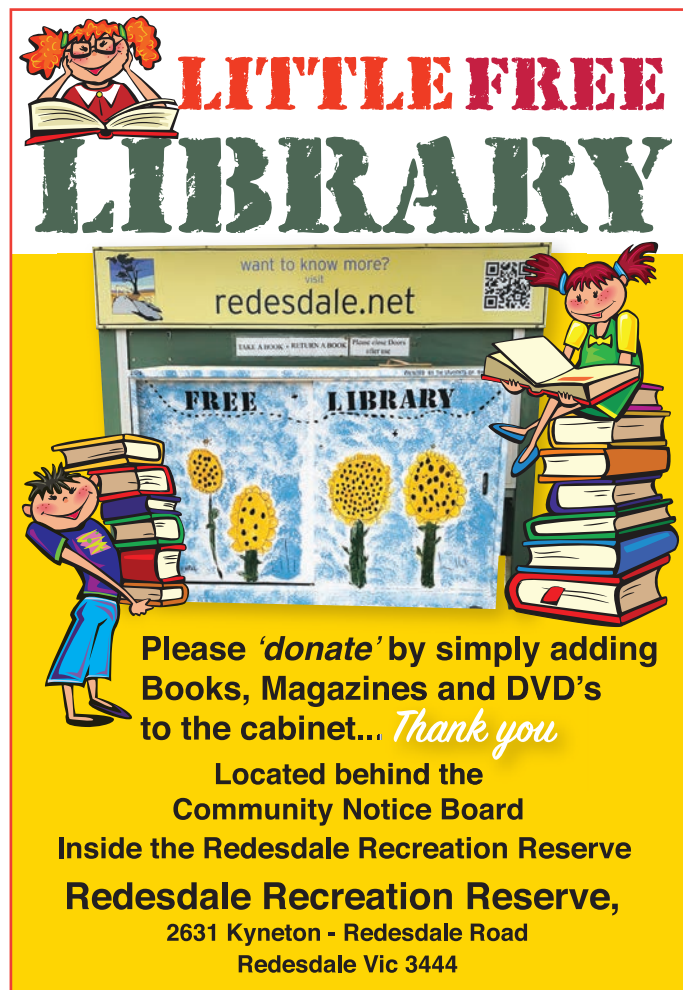
Revellers Road Trip

The Revellers have just completed their 2022 season playing to three full houses at the Sutton Grange hall. As well as enjoying what the Revellers had to offer, the audiences were served a delicious afternoon tea and were able to mix and chat in a convivial get-together at the end of the show.

Until now the concerts have all been evening performances with dinner by the Redesdale Hall Committee, but the afternoon matinee format is a real winner and looks like it's now 'the way to go'. There were plenty of comments about not having to drive late at night through rain (and kangaroos) and that kids can now come too.

The 'Raison D'etre' for the Revellers always was to raise money for the Redesdale Hall Committee, and along the way they have helped other Committees too. They are pleased that their efforts this year have boosted the coffers of Sutton Grange and Redesdale committees by considerable amounts.

John B.



LITTLE FREE LIBRARY

want to know more?
visit redesdale.net

TAKE A BOOK - RETURN A BOOK Please close doors after use

FREE LIBRARY

Please 'donate' by simply adding Books, Magazines and DVD's to the cabinet... *Thank you*

Located behind the
Community Notice Board
Inside the Redesdale Recreation Reserve
Redesdale Recreation Reserve,
2631 Kyneton - Redesdale Road
Redesdale Vic 3444



Acting Principal: Andrew King

Phone: 5425 3155

Email: redesdale.mia.mia.ps.ps@education.vic.gov.au

Redesdale Mia Mia Primary School



School News

Respect, Resilience & Relationships

Well we are wrapping up another fantastic year of learning and fun here at RMMPs. I can safely say that the students are excited for our final excursion down to Melbourne as a whole school. We are visiting a few amazing sites and participating in a wide variety of fun and engaging activities for our students. This free camp will be a highlight for the students and a great way to celebrate their wonderful achievements this year. We are going to visit the following:

- MCG and Australian Sports Museum
- ACMI at Federation Square
- Eureka Skydeck
- Melbourne Sports and Aquatic Centre
- The Lego Exhibition at Melbourne Museum
- Ice Skating at O'Brien Icehouse

We hope everyone has a lovely and safe holiday and look forward to a nice break !



Are you in search for a playgroup in the Redesdale Mia Mia surrounds?

Well then look no further as the Redesdale Mia Mia Primary School is now hosting a playgroup at our wonderful primary school. There is a Facebook page for the group, just search for 'Redesdale Mia Mia playgroup.' We had our first session, with many local families attending and establishing connections with other families. If you are interested, please feel free to join this group!

Please contact the school for 2023 enrolment information to be a part of our wonderful school. We are having three Prep transition days coming up on the following Mondays.

Monday, November 28th– 9:15-11Am

Monday, December 5th– 9:15-11AM

Monday, December 12th– 9:15-11AM

Redesdale and District Association AGM Report

Another year gone by as quick as a wink it seems. We have now held the 10th Redesdale and District Association AGM this past weekend, where members of our community were all invited and some have again put up their hands to join The Redesdale and District Association for 2022/2023. Looking back at all the minutes of our meetings, it appears we have achieved quite a lot this past year. In February, The Reactivate Redesdale event was held on our local reserve, in collaboration with the Redesdale Recreational Reserve Committee. The event gave our wider community the chance to meet all 9 of our local committees. It was a granted event from the Greater City of Bendigo and its success was shown by the number of local people who attended. Exactly what we needed after two years of Covid lockdown.

As part of the Redesdale Community Precinct Project, three meetings were held in March, April and May to support a collaboration between our community committees with the assistance from the Greater City of Bendigo and the company Co-Impact . The purpose being to strengthen Redesdale as a town and community as well as to help progress future projects. Sadly this didn't happen but from what I hear from many people in our community there is positive feedback stating "we have an ongoing and very healthy outlook for the future of our town."

The Redesdale and District Association was set up to help facilitate local community groups, to offer support and help draw people in when an event dictates.

Any successful community group relies on the commitment and participation of its residents and I think perhaps we need to build back that good spirit.

On a positive note, we know we can host events successfully, all three committees contributed to a pop up cafe/bbq at the Open Garden Victoria event at Kathy Hall and Rod Gibson's property "Coliban Springs" in April. A fun event that surprised a lot of people from far and wide with home baked cakes, scones, tarts , biscuits etc a very successful outcome in terms of a fundraising event as well as a good example of collaboration, volunteerism and a worthwhile experience. It was a chance to introduce some of our new residents that participating in our community events is a great way to meet people.

RaDA initiated the June Car Boot Sale , due to the Bush Market cancellation for the second year, again with the assistance from the RRRC. Whilst it turned out to be one of the coldest days in June , a lot of hot sausages sold, so it was a worthy try just in the wrong season.

Then the many conversations and meetings started for The Pavilion Art Show and Craft/produce Market. The input and ideas began on a roll and continued to the end.

My thanks on behalf of our committee firstly goes to all our sponsors, starting with the Foundation for Rural Regional Renewal for the grant they awarded us back in July 2021, together with Pan After from Melbourne, The Bell Cottage in Redesdale,

The Redesdale Hotel, The Bendigo community Bank in Heathcote, Joyce Hopwood-Knights from The House Gallery in Redesdale, Ray White Heathcote and Ray White Kyneton for all the funding contributions and the advertising signage

boards.

To all the people that kindly donated their items for our silent auction our thanks for your generosity.

As we all know, without well-funded support and sponsorship, an event such as our Art Show can't be done to the standards of what people expect.

As a team event it was a success despite the weather.

Thankyou to all who helped with the cleaning of the community pavilion inside and outside prior to the art show, kindly organised by Jo Smith Sargent and to the final cleanup participants who gave their time and assistance under the direction of the RRRC.

I want to pay particular thanks to the two talented secretaries, Lin Newton from RaDA and Craig Newton from the RRRC, who dealt with the stall holders, the sponsors, the advertising People and the artists from the initial contact through to the meet and greet and the market set up. The paperwork alone was extraordinary and the hours of work they put in was very generous.

Our thanks goes to Lynette Ingles at Blue Pencil Publishing, whom we seem to have a direct line to, and also put in many extra hours of her time. Lynette has always been a great supporter of Redesdale events. Our treasure Robyn Abramowski and Gary Prendergast treasurer from the RRRC who were fastidious in their accounting,

Jo Smith-Sargent and her catering team including Frederika Laurie that produced the beautiful homemade food for our opening night. Thank you to Kevin Foley and David Watt for their curating experience and hardwork and to Gloria Pocock for her organisational experience and advice from previous Redesdale Art shows.

For those of you who don't know, we had 32 Artists exhibiting just over 100 pieces of work and 40 stall holders who brought their crafts and produce to Redesdale, a great result.

The Redesdale and District Association through our Secretary has sourced replacement items for our local community defib machine after receiving notification that there is a potential problem with the Phillips brand defibrillator. This has been a very long ongoing issue, working with Ambulance of St. John, seeking guidance from the City of Greater Bendigo and updating the other contributing committees. We appreciate and thank you for the time and effort you have taken. Our thanks goes to the Redesdale CFA for their offer to arrange a sausage sizzle on November 26th (voting Day) at the Redesdale Hall which will be managed with other contributing committees, all raised money going towards ongoing defib replacement pads and batteries.

I would like to thank the Redesdale Recreational Reserve Committee for giving the Pavillon space for community groups such as RaDA, The Bridge Connection, The Sit and Knit for a Bit group, the Eppalock Ward listening Post meeting, and the final visit from Steph Ryan the retiring Deputy Leader of the National Party in Victoria and the continued organised Drop In Digital sessions that have certainly been beneficial for all who have attended.

My thanks to Megan Stewart for her ongoing assistance with the RaDA website and Debbie Graetz for her management of the Redesdale Instagram account. Please keep these sights in mind for anything of interest that relates to Redesdale and

its surrounding districts.

My thanks to the chairman Mike Abramowski for his continued support and for chairing today's AGM and I thank the new and continued members of the Redesdale and District Association.

The following nominations have been accepted.

President . **Pan Prendergast**

Vice President. **Frederika Laurie**

Secretary. **Lin Newton**

Treasurer. **Rob Abramowski**

Bridge Connection Rep. **Regina Bennett**

Redesdale CFA Rep. **Craig Newton**

RRRC Rep. **Craig Newton**

Landcare Rep. **Barbara James**

Stone Reserve Rep. **Jo Smith-Sargent**

General committee members.

Megan Stewart

Kym De Lany

Anne Murray

Kathy Hall

Let's make Redesdale a place that is respectful to all and a community that values diversity and is consequently safe, inclusive and compassionate.

Merry Christmas and thanks for reading.

Pan Prendergast

RRRC Report for our activities in 2022.

It has been a busy year for RRRC, with the finalisation of the Community Pavilion. As a result, the Pavilion has become a central and well used facility for the community with both paid for and complimentary community activities.

Community groups and Committees have been using the Pavilion as a great venue for small to medium sized meetings, including:

- Redesdale HUB Meeting
- CFA Awareness briefing
- Landcare Meeting
- RaDA Committee Meeting (8 Meetings)
- RRRC Committee Meetings (5 Meetings)
- Stone Reserve Committee (2 meetings)
- CoGB Community Planning Consultation Meeting
- Steph Ryans' "Thank you and farewell" Meeting
- CoGB Community Listening Post Meeting

With the Pavilion overlooking the reserve, it was a perfect match to coordinate a number of larger events, such as:

- Reactivate Redesdale Community Get-together
 - Car Boot Sale
 - Pavilion Art Show
 - Redesdale Craft & Produce Market
- Regular Community Activities are also being held in the Pavilion. So far we have had:

- Yoga Classes (34 sessions – on-going)
- "Sit & Knit for a Bit" Craft Sessions (21 sessions – on-going)
- Complimentary Drop-in Digital Training (2 sessions – 4 remaining)

Complimentary Drop-In Digital Learning Sessions



It's no secret companies and the government want us to use our technology more. However, some of us find this a little daunting, and need a little hands-on guidance to be more engaged.

Redesdale Recreational Reserve Committee, in partnership with City of Greater Bendigo, is planning to arrange COMPLIMENTARY DIGITAL DROP-IN SESSIONS at the Redesdale Community Pavilion using the services of Computer Coaching of Bendigo.

- Learn how to best use your devices.
- Get assistance with internet issues.
- Connect apps across all your devices.
- Help with updating your software.
- Understand how to use the internet for purchasing groceries, managing on-line accounts, pay utilities and other bills.
- Learn how to use Face-time or Zoom with family and friends.

It's yet to be finalised, however our plan is for this service to be available
2:00 pm to 5:00 pm on the first Wednesday of the month – commencing Oct. (6 months, excluding January 2023.)

Your expression of interest will assist us in getting this approved, so drop us a line and we can keep you updated on progress.

Contact: **Craig Newton 0408 890 060**
3444reserve@gmail.com

We are hoping that these activities will continue into 2023, with a number of others being proposed.

Other activities that have occurred during the year include:

- A battery system was connected to the Pavilion solar electricity system to enhance our black-out resilience during emergencies.
- The decking outside the Pavilion has been completed, along with the shade sails.
- Combining this with the purchase of chairs and tables have definitely enhanced the decking experience.

We are looking forward to the coming year being even busier, and invite all the community members to consider and propose any ways in which they can use the facilities we maintain for your benefit.

You are warmly invited to

BARFOLD

COMMUNITY CHURCH

Meets 10.00 am

2nd – 5th Sundays each month

followed by morning tea

at Barfold Union Church

Heathcote-Kyneton Rd, Barfold

Contact; Leigh 0425812786



UNITING CHURCH

10am Start

Morning Tea is shared before each service at 9.45



**Mia Mia Church Service Dec 11th Service
at 10am, morning tea at 9.45**

**Carols by Candlelight at Sutton Grange
Dec 18th at 7pm**

There is no church in January 2023

**Check the Macedon Ranges Uniting
Church Website for extra news**

For more information go to

www.macedonrangesunitingchurch.org.au

CATHOLIC CHURCH

Redesdale 2nd Sunday of each month 11am

**Lisa
Chesters MP**
FEDERAL MEMBER
FOR **BENDIGO**

ADVERTISEMENT

5443 9055

lisachesters.org

Authorised by Lisa Chesters, ALP,
16 Myers St, Bendigo



Labor

COMMUNITY DEFIBRILLATOR

Located on the side of the Redesdale fire station
Access code is 3444 (Redesdale post code)

The Community owned defibrillator
is now accessible to all
community members.



Turn your house
into a home
with Tucks
locally made products



- Aluminium and Timber Windows
- Window Replacements • Security Doors
- Shower Screens • Wardrobe Doors

We are in your area regularly
and offer a **FREE** measure
and quote service.

We can offer supply and install prices.



**Tucks
Windows
BENDIGO**

Celebrating 43 Years
providing top quality
products and
professional
friendly service.

P: 03 5446 8855

E: quotes@tuckswindows.com.au

www.tuckswindows.com.au

It has been a busy Spring trying to keep on top of the incredible amount of growth that we are having this season. If it's not raining then there are limited opportunities to get out on the mower and that also has its challenges. Boggy lawns and being eaten alive by mosquitoes but most people are up to the challenge. The evenings and weekends are filled with the sounds of brushcutters and mowers, so keep up the good work because Summer will arrive eventually, maybe? We still need to be prepared.

As this is the last hard copy edition of the BC until the end of Summer, I just wanted to run through some of the main fire safety tips.

PREPARE Most people are doing that now by cleaning up their properties.

PLAN Have a plan in place and recognise your "trigger". Do you leave early on a total fire ban day or is it only if the rating is Catastrophic? Do you stay and defend and if so are you capable of doing that?

BE INFORMED Become familiar with the fire danger ratings and know what you are in. Take note of emergency broadcasts, texts, emails and social media.

HAVE A PLAN B If you're unable to execute your plan then have a backup. Have somewhere you can go. A neighbour or friend if it is safe to do so or the Redesdale Hall, it is the designated safe place.

DON'T RETURN Until it is safe to do so. Too often we see people trying to get back into their property to get their pets. They are more resilient than us so if they are in a well prepared, safe place then most likely they will be alright. **DISCUSS** Any issues or concerns you may have with us. We are here to help and it may help us by knowing a bit about you as well.

Finally, don't start any fires yourself. The most common reason for us to turn out is to put out a mower fire started by the landowner. The most important things to remember with mowing is to avoid the heat of the day and never mow dry grass. All of this of course depends on the season changing and us actually having a Summer.

On a sad note we have recently had to come to terms with the retirement of long time Fire-fighter and life member Lindsay Booker. Lindsay and Ruth have been a big part of the community and will be sadly missed, although only moving to Castlemaine. We hope to see plenty of you both.

Until next year, have a happy and safe Christmas.

The "Other" Redesdale Bridge
On a recent trip to Melbourne I noticed this structure from where we were staying, on Bridge road Richmond. Closer inspection revealed that it was the bridge that was in the original destination

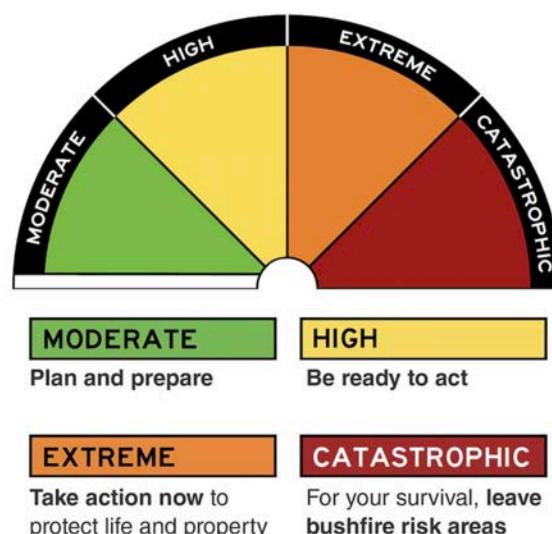


of

As of September 1st The new Australian Fire Danger Rating System

will have four levels with action-oriented messages, logical colours and simple descriptions to encourage people to take action to protect themselves and others in the face of bushfire risks.

#AFDRS #CFA #CommunityInformation #firesafety



creative designs for your business

logos menus flyers posters
invitations brochures magazines
business cards advertisements
letterheads with compliment slips
full business imaging

lyn ingles | graphic designer
blupen@bigpond.com
0429 911 980

Proudly Sponsoring assistance to the 'Bridge Connection'





CV SHEDS

Est. 1975

Quality supplier and installer of:

- Farm Sheds - Work Shops
- Hay Sheds - Garages/Barns
- Quality RHS Frames
- All Australian Steel
- Shed Materials - purlins/ sheeting also available

Been Building sheds in Central Victoria for over 40 years

Come and visit us at 12 Bourke St Kyneton
Mon- Fri 8 am to 4.30 pm, other times by appointment
03 5422 6644 or info@cvsheds.com.au www.cvsheds.com.au



REGISTERED Building Practitioner



Ballan. Local Farmers and Makers Market.
2nd Saturday of every month. **9.00 - 1.00pm**

Castlemaine. Local Farmers Market.
1st Sunday of every month. **9.00 - 1.00pm**

CFM. Weekly Market, Wednesday. **2.30 - 5.30pm**

Clunes. Local Farmers Market
2nd Sunday each month. **8.30 - 1.00pm**

Creswick. Local Farmers Market
3rd Saturday every month. **9.00 - 1.00pm**

Daylesford. Local Market.
Every Sunday. **8.00 - 3.00pm**

Gisborne. Olde Time Market.
1st Sunday every month. **9.00 - 2.00pm**

Kyneton. Local Farmers Market.
2nd Saturday every month. **8.30 - 1.00pm**

Lancefield. Local Farmers Market.
4th Saturday every month. **9.00 - 1.00pm**

Maldon. Local Farmers Market.
2nd Sunday every month.

Malmsbury. Local Farmers Market.
3rd Sunday every month. **9.00 - 1.00pm**

Talbot. Local Farmers Market.
3rd Sunday every month. **9.00 - 1.00pm**

Trentham. Local Farmers Market.
3rd Saturday every month. **9.00 - 1.00pm**

Woodend. Local Farmers Market
1st Saturday every month. **9.00 - 1.00 pm**

PLAYERS WANTED

MIA MIA CRICKET CLUB

EVCA Saturday Competition from 1pm

**Season commences
Saturday 15 October 2022**

TRAINING
Thursdays from 5.30
@ The Flat, Mia Mia.



ALL WELCOME
No prior
experience or
gear needed.

Contact
Will | 0411 834 175
or visit FB page.

Mia Mia Cricket Club 22-23 Season Fixture



ROUND	DATE	TIME	MATCH	VENUE
1	15 October	1:00pm	Bagshot	HOME
2	22 October	-	BYE	-
3	29 Oct & 5 Nov	1:30pm	Strathfieldsaye	HOME
4	12 Nov & 19 Nov	1:30pm	Axe Creek	AWAY
5	26 November	1:00pm	Mandurang	HOME
6	3 Dec & 10 Dec	1:30pm	United	HOME
7	17 December	1:00pm	Axe Creek	HOME
8	7 January	1:00pm	Strathfieldsaye	HOME
9	14 Jan & 21 Jan	1:30pm	Bendigo Strikers	HOME
10	28 Jan & 4 Feb	-	BYE	-
11	11 Feb & 18 Feb	1:30pm	Mandurang	AWAY
12	25 Feb & 4 Mar	1:30pm	Bagshot	AWAY
Semi Final	11 & 12 Mar	TBC	TBC	TBC
Grand Final	18 & 19 Mar	TBC	TBC	TBC

New Players Welcome

Elphinstone

Post Office & General Store

*'In the heart of the
Elphinstone community'*



- Newspapers/ Magazines
- Origin Gas Bottles
- Bread • Milk & Groceries
- Postage Services

*'The General Store where
community meets business.'*

Gill & Dave (03) 5473 3200
9 Bateman Street, Elphinstone

Knitting & Crochet

GROUP



Get back to
Knitting or
Crochet...

- Learn new techniques
- Learn to Knit or Crochet
- Possible Knitting and Crocheting for charity

**Every Thursday 1pm - 3pm
at the Redesdale Reserve Pavilion**

If you are interested in joining please contact:
Gloria Pocock: gapocock@bigpond.com or
Regina Bennett: reginabennett@bigpond.com

Proudly printed in Kyneton

Castlemaine, Kyneton & Gisborne
CopyCentre
Printing together for our community

Design & Pre-press
Plan Scanning, Finishing Services.

*Not just a Copy Centre...
we are so much more.*



www.windarring.org.au

58 Mollison Street
Kyneton
03 5422 2400

SUPPORT YOUR ADVERTISERS

'THE BRIDGE CONNECTION COMMUNITY NEWSPAPER'

...is **supported** by **local businesses**
and it is important, in return

for the community to **support them**.

For rural regions to succeed in business
they need the 'locals' to keep them viable
by conducting business in our township.
So! next time you need something for a job
that you are working on... look to the

'Bridge Connection' and give
a **LOCAL BUSINESS** a try.

**BUY LOCAL
WHERE YOU
ARE ABLE TO.**

**SUPPORT THE TOWN THAT
SUPPORTS YOU... THANK YOU!**



To advertise in the 'Bridge Connection'
please contact the Editor

Regina Bennett on: 0437 514 223 OR email
bridgeconnection.editor@gmail.com



October Rain Fall

Redesdale 217.00mm Year to date 806.60mm

Mia Mia 223.00mm Year to date 856.25mm

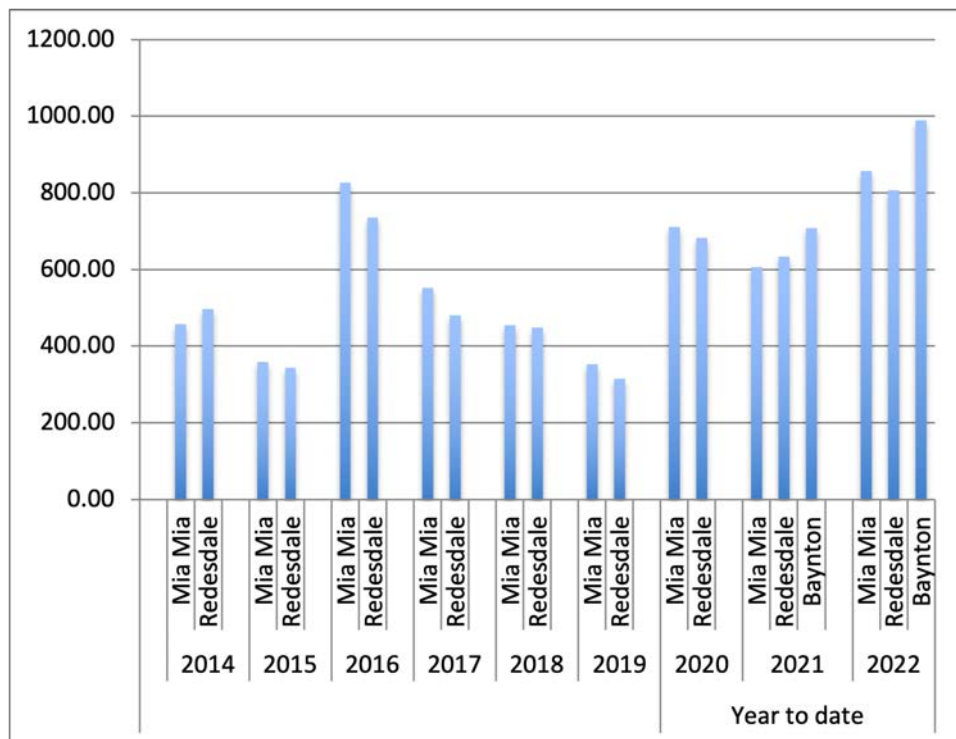
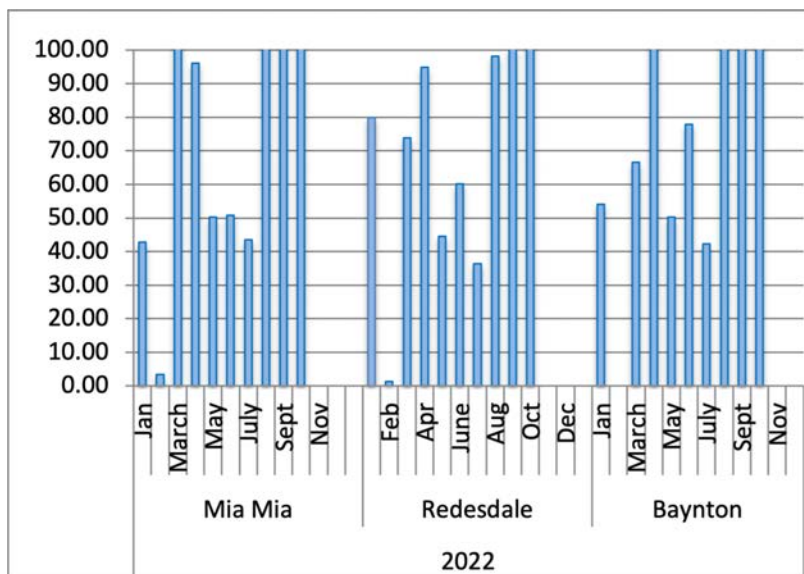
Baynton 320.00mm Year to date 989.90mm

The average yearly rainfall for **Redesdale** is about 601mms.

Thank you to **Helen Bennett** for the
Mia Mia readings & **Belinda Ryan** for
Baynton readings

Year Totals for Previous Years

2016	Mia Mia	826.00
	Redesdale	735.40
2017	Mia Mia	551.75
	Redesdale	479.60
2018	Mia Mia	455.00
	Redesdale	448.40
2019	Mia Mia	352.00
	Redesdale	315.00
2020	Mia Mia	711.25
	Redesdale	682.85
2021	Mia Mia	593.50
	Redesdale	634.40
	Baynton	707.80



RECIPE OF THE MONTH

Crostoli

72



2 eggs
50g icing sugar
50g butter melted
120g plain flour
½ tsp baking powder
60ml white wine (or Marsala)
Olive Oil for frying (not extra virgin)
Icing sugar to dust

Put the flour on a work surface and add the baking powder. Make a well and mix in the butter, sugar, eggs, and wine. Mix everything together, kneading to form a soft dough. If it is too hard add a little wine if too soft add some flour. Knead the dough for at least 5 minutes. Make into a ball, wrap and leave at room temperature to rest.

Roll out the dough very thinly, using a rolling pin. I use my pasta maker which I roll out to the finest setting. The thinness of the dough is the secret to good Crostoli.

Using a pastry wheel, cut strips of dough about 2 cm wide and 10cm long.

Heat enough oil to come two-thirds of the way up the sides of a frying pan or saucepan. When the oil is very hot (a piece of stale bread should brown in 50seconds)) fry the dough shapes in batches until pale gold and puffy. Lift the Crostoli out of the oil and drain on kitchen paper.

Before serving sprinkle each with icing sugar

Marisa Leahy

REDESDALE COMMUNITY HALL & PAVILION AVAILABLE FOR HIRE*

Redesdale gives you a choice of venues for your next party, meeting or event.

Redesdale Hall: 160 sqm floor space with an overlooking stage, and expansive catering kitchen, as well as on-site restrooms.

Redesdale Pavilion: 108 sqm floor space with panoramic windows overlooking Redesdale Reserve.

We also have extensive **furniture & equipment** to help you hold your event at home:

Commercial sized steel spit roaster	Large marquee, 6m x 3m
Collapsible marquee, 3m x 3m	Shade umbrellas, green
Table cloths, white	Tables, 1.8m x 1m
Chairs, white plastic	

Don't forget the **Hall Kitchen** can be rented independently for preparation of your preserves and cooking demonstrations.

* Room Hire is free for local community group meetings.

For all enquiries contact Redesdale Recreational Reserve Committee:

E: 3444reserve@gmail.com

M: 0408 890 060

PARTY EQUIPMENT FOR HIRE

The following party equipment is available for **HIRE** from the **REDESDALE RECREATIONAL RESERVE COMMITTEE (RRRC)**.



Commercial sized steel roaster	\$120 per weekend
Large marquee, 3m x 6m	\$225 per weekend
Collapsible marquee, 3m x 3m	\$80 per weekend
Tables, 1.8m x 1m	\$8 each per weekend
Table cloths, white	\$10 each
Chairs, white plastic	\$2.50 each
Umbrellas, charcoal	\$5 each

A bond will be required on most equipment for hire. All proceeds go to the up keep & development of the **RRRC**.

For more information or to make a booking, please email: **3444reserve@gmail.com**

Plant of the Month

“Diggers Speedwell”

This is a new gardening section aimed which will aim to highlight a plant which will grow well in our challenging local conditions; rocks, droughts, rabbits, locusts and now soaking rain! We have very big boots to fill since Fermi has unfortunately decided to discontinue his amazing series of “Redesdale Ramblings”.

This month will feature Diggers Speedwell, otherwise known as *Veronica perfoliata*, *Parahebe perfoliata* or *Derwentia perfoliata*.

A cutting was given to me by a dear friend about a year ago after I admired the flower protruding from a gorgeous posy she had brought to my house. The delicate blue flowers, which bloom throughout the summer, hang in spikes from very attractive branches of greyish green leaves. It is great for cut flower displays.

It is a perennial shrub that will suit native and cottage gardens but will flourish in a semi shaded position. There are also white varieties.

The *Derwentia* genus, in which the Diggers Speedwell lies, is placed in the foxglove (*Scrophulariaceae*) family. It grows from central NSW through central and western Victoria.

If you have recently started a garden in our local area and want to try this plant, ask if you can have a cutting from local gardeners. Propagation is most successful if new growth is taken from sprouting rootstocks.

Kathy Hall
Coliban Springs



BRIDGE

BRIDGE



IS AN INTELLECTUAL GAME

If you have ever wished to play Bridge, now is your big opportunity.

The plan is to run eight sessions for beginners in the pavilion at Redesdale, starting

January 13th at a cost of \$17.00 per session.

We are fortunate to have Cate Carr, a top teacher to guide you through the beginning stages of this fascinating game.

Enquires to 0418388919

**Gardening help needed
at**

COLIBAN SPRINGS

Casual hours

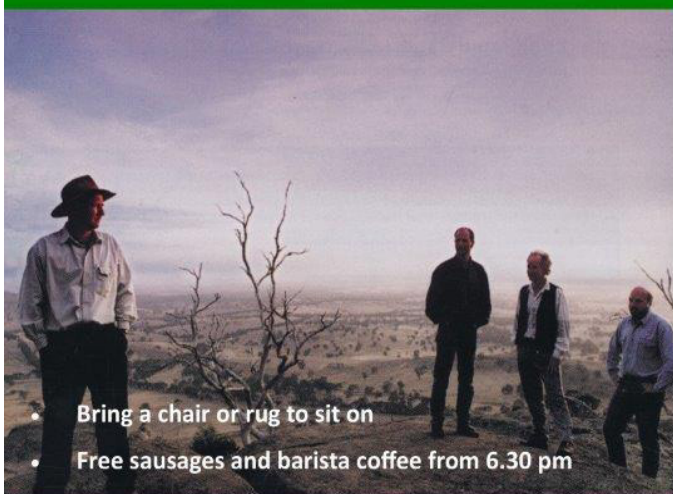
Text to 0407 116 899



'Carols at the Reserve'



Steve Messer & the
"Strange Country" band



- Bring a chair or rug to sit on
- Free sausages and barista coffee from 6.30 pm

Sunday 18th December 7-9 pm

Redesdale Recreation Reserve

All Welcome



LITTLE FREE LIBRARY

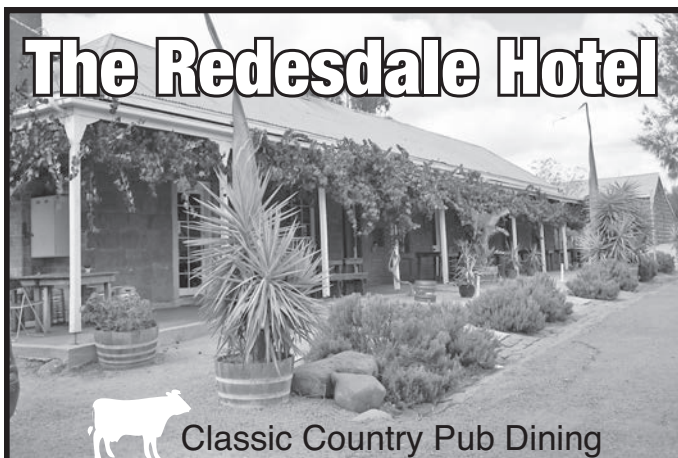
want to know more?
visit
redesdale.net



Please 'donate' by simply adding
Books, Magazines and DVD's
to the cabinet... *Thank you*

Located behind the
Community Notice Board
Inside the Redesdale Recreation Reserve
Redesdale Recreation Reserve,
2631 Kyneton - Redesdale Road
Redesdale Vic 3444

The Redesdale Hotel



Classic Country Pub Dining

**For bookings
please call (03) 4405 0601**

Monday - Closed

Tuesday - Closed

Wed to Sun • Lunch 12noon - 2.30pm

• Dinner 6pm - 8.30pm

The Redesdale Hotel
2640 Heathcote-kyneton Road
Redesdale, Vic, 3444

info@theredesdalehotel.com.au



The Redesdale Hotel

[redesdalehotel](https://www.instagram.com/redesdalehotel)



www.theredesdalehotel.com.au



We can spread any amount that you supply,
usually off the ground via industrial loader.
We can also get a bulk load and deliver
to a number of smaller properties if required.

FERTILISER SPREADING SERVICE



**Contact
for a quote**

Please contact
Carl 0412 144 936
or **David 0427 546 586**

No job too small,
no job too big,

email: carl@glendarling.com.au
119 Darlington Road Baynton VIC 3444

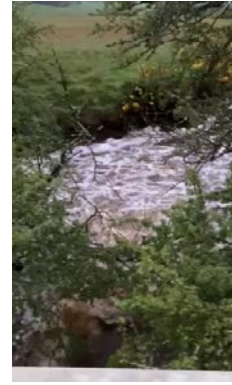
Campaspe River Update

The Kyneton WRP Licence Amendment

The process remains paused until the EPA has received an acceptable response from Coliban Water to EPA's latest Request for Information, issued on Oct 13th. The EPA will then continue to assess the application.

Snipes Creek

In trouble again. These pictures taken on Oct 12 indicate the difference in volume between the water entering the KWRP and that downstream of the plant, at Red Hill Rd.



The notification of release from the KWRP letter, from Coliban Water, included the following..."Regular monitoring indicates water quality is being impacted by run-off upstream of the Plant. We will continue to complete water quality testing in conjunction with the EPA." No data for volumes of releases from the plant or water quality has been seen from CW or the EPA at this stage, but the water in Snipes Creek was so foul that farmers had the water tested themselves. The sample taken from Snipes Creek at Red Hill Rd on Oct 27 revealed the **E. coli level >2400/100mL**. In correspondence from the EPA to Coliban Water regarding the KWRP Licence amendment application back in April, it points out that EPA Publication 1910.2 stipulates that:

- o Any exceedance to the recommended E. coli levels for Class B recycled water (100 E. coli /100mL) should trigger resampling and retesting.*
- o Levels ≥ 400 E. coli /100 mL in two consecutive samples or a rolling annual median ≥ 100 E. coli /100 mL should trigger a notification of WWTP failure to EPA and investigation to remediate the issue.*
- This means that the E. coli levels proposed for the amended licence (see Attachment F and Permission pathway form) would not be appropriate:*
 - o 100 E. coli /100mL should be a rolling median, not an annual median*
 - o 400 E. coli /100 mL should be the maximum level instead of the proposed 500 E. coli /100 mL*

So if the recommended E. coli levels for Class B are 100 E. coli/100mL, what Class is >2400 E. coli /100 mL!!!!? Whether the pollution is coming from the KWRP or it's a cocktail from there and the industrial sites across the road, the fact is that the amount of E. coli is far far too high and means that once again the Campaspe has a tributary that is contributing to its demise. The long-range forecast overview for our area indicated that the rainfall in the Dec-Feb period is likely to be up, while the temperatures are likely to be down. Along with the soil moisture being so high we may well see further releases into the waterways over summer. Take good care of yourselves and your stock. Any problems with stock that have been in contact with polluted waters should be reported to Agriculture Victoria on 1800 226 226, and evidence of foul waterways to EPA 1300 372 842. Unfortunately the fauna will just have to do the best it can under these stressful conditions. Check the health of Lake Eppalock regarding blue green algae over summer at www.g-mwater.com.au/news/bga for current updates and report any sightings. Local knowledge and observations are very valuable.

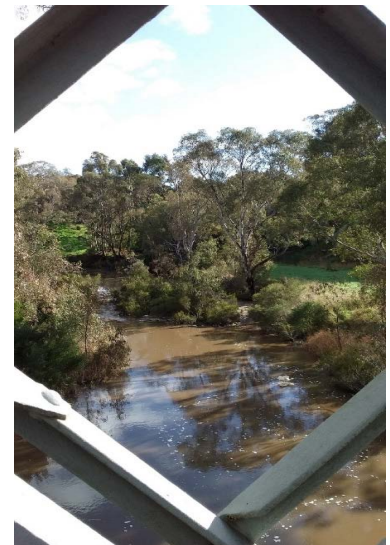


Photo of the river through the Redesdale Bridge "Our precious Campaspe in calmer times."

The Redesdale Festival Returns!

By Tahlia Campbell

After taking a break the last few years, the Redesdale Festival finally returned to us! From Friday the 28th to Sunday the 30th of October, the recreation reserve was bustling with activity. Crafters and small business owners from all over came to sell their wares. Delicious food, drinks, and snacks were available on this surprisingly sunny weekend.

We predicted a rocky start to the Saturday market when rainclouds gathered overhead. The marquees were moved from the ovals to the rec reserve grounds in case of heavy rain. There was no need to worry, though - despite the grey skies looming, the sun showed its face and ended up being quite a warm day!

It was an excellent weekend for families, who traveled all across the state to share in the excitement. Live music played near the hall, keeping everyone entertained as they explored everything there was to offer.

The air was filled with the delicious scent of authentic dumplings, organic tea, hot jam donuts and more. Whether you were looking for some lunch or just a sweet treat to have with your coffee, there was something at the market for you.

For those lucky enough to start their holiday shopping early, this was the perfect opportunity to get some quality gifts for loved ones. Our sellers brought along their best products for purchase, most of them hand-made in Australia. There were options for everyone, including crystals; candles; jewelry; essential oils; hand-crafted toys, delicious food products, and more.

The event was a great chance for both the community and visitors to connect. The last few years have separated us, made us feel lonely and isolated. But events like these can bring people together and help us feel a part of something again. Hopefully this year marks the return of more festivals in the coming years.



LOCAL REDESDALE / MIA MIA - CONTACT LIST

<https://www.redesdale.net>

FIRE REPORT A FIRE 000

**VIC BUSHFIRE INFO LINE
1800 226 226**

REDESDALE FIRE BRIGADE

- Captain Mitchell Noonan 0439 769 985
- Secretary Geoff Thomas 0429 143 490



MIA MIA FIRE BRIGADE

- Captain Calvin Millard 0409 979 037 A/H: 9744 6745
- Mia Mia Fire Brigade Secretary - Steve Cadasch 5425 5548

LOCAL ORGANISATIONS

BRIDGE CONNECTION MAGAZINE

Editors: **Regina Bennett** 0437 514 223

Bridge Connection President - Gloria Pocock

Bridge Connection Treasurer - Marissa Leahy

MIA MIA MESSENGER Enquiries 5425 5565

Mia Mia Hall Committee - Wendy Hulls 5425 5590

Mia Mia Mec. Inst. Secretary - Wendy Hulls 5425 5590

Mia Mia Mec. Inst. President - Anthony Ryan 5425 5578

Mia Mia Reserve Comm. Secretary - Anthony Ryan 5425 5578

Mia Mia Reserve Comm. Chairperson - Grant Hulls 5425 5590

Otis Foundation 5444 1184

Redesdale and District Assoc. Inc - Lin Newton 0418 583 304

Redesdale Hall Committee - C. Boyd (Sec) 5425 3194

Redesdale Hall Hire - C. Newton 0408 890 060

Redesdale Redesdale Rec. Res. Cttee - Craig Newton 0408 890 060

email: 3444reserve@gmail.com

Suicide Bereavement Service - 'Standby' 0439 173 310

Tennis Club - Linda Newnham 0400 554 716

TOWNSHIP BUSINESSES

Redesdale Hotel - Beth & Garth 03 4405 0601

Redesdale General Store 5425 3154

The House Gallery - Joyce 0408 154 315

COUNCILLORS

City of Greater Bendigo - Eppalock Ward

Matthew Evans 0437 867 028

Marg O'Rourke 0429 061 096

Greg Penna 0429 721 958

POLITICIANS

Federal Member for Bendigo - Lisa Chesters (Labor) 5443 9055

State Member for Euroa - Steph Ryan (Nationals) 5762 210

SCHOOLS

Redesdale Mia Mia Primary School 5425 3155

Kyneton High School 5421 1100

HEALTH SERVICES

Bendigo Health 5454 6000

Heathcote Health 5431 0900

Kyneton Health 5422 9900

Royal Flying Doctor Community Transport
(Heathcote) 5431 0900

TOURIST INFORMATION CENTRES

Heathcote Visitor Centre 5433 3121

Bendigo Visitor Centre 1800 813 153

Kyneton Visitor Centre 1800 244 711

REGULAR ADVERTISERS

Connolly Glass 0428 535 101

Lisa Chesters 5443 9055

The Optometrist 4411 6802

Palmer Steven & Rennick 5422 6500

Redesdale Hotel 4405 0601

Redesdale General Store 5425 3154

Fertiliser Spreading Service 0412 144 936
or 0427 546 586

Steph Ryan 5762 2100

Tucks Windows 5446 8855

William Farmer Funeral Directors 5441 5577

ORGANISATIONS

City of Greater Bendigo 5434 6000

Macedon Ranges Shire 5422 0333

Mitchell Shire Council 5734 6200

Mount Alexander Shire 5471 1700

POWERCOR 132 412

SPONSORS *Without their support our community would not thrive - Thank you!*

blue pencil publishing 0429 911 980

Elphinstone Post Office & Store 03 5473 3200

Heathcote Community Bank 1300 236 344

Kyneton Copy Centre 03 5422 2400

Kyneton Veterinary Hospital 03 5422 1099

Redesdale General Store 03 5425 3154

The " Other " Redesdale Bridge

On a recent trip to Melbourne I noticed this structure from where we were staying, on Bridge road Richmond. Closer inspection revealed that it was the bridge that was in the original destination of what later became the Redesdale Bridge .

It is a commonly accepted story about the Redesdale Bridge being built in England and shipped across to Melbourne to span the Yarra River between Hawthorn and Richmond. After the ship sinking only a couple of hundred metres from its destination, the Bridge was later salvaged and purchased by the Metcalfe and Mclvor shires to cross the Campaspe River. The Yarra Bridge replacement must have been built quickly because it was opened one year after the Redesdale in 1869 (although a small plaque claims it to be Victoria's oldest iron bridge). This picture shows a couple of obvious differences between our bridge and the Yarra version. The lattice shaped iron trusses along the sides are unmistakably the same but the fact that it is under the road stands out. The endless stream of traffic travelling along Bridge Rd would be oblivious to the historic structure underneath them. The other obvious difference is that the iconic arches that the Redesdale Bridge is famous for are missing. These were not part of the original bridge but built later when the engineer decided they were needed to give the Redesdale Bridge more sideways stability. These may have been built on site as a temporary foundry was set up to replace or rebuild sections of the bridge that

were damaged from the fire and sitting in sea water for so long.

The recent celebrations to commemorate the bridge's 150th year led to a large amount of research being done into the Redesdale Bridge's history. Some of the theories about the bridge, and in particular the other half", were proven to be sadly untrue. There have been many stories about half the bridge being used at Redesdale and the other half being used at locations ranging from Queensland to as nearby as Keilor. Unfortunately, less exciting is the fact that the project was so far over budget that approximately two thirds of the bridge was used to span the Campaspe and the other third was sold off for scrap metal to reclaim some of the costs.

It always seemed strange to me that the ship carrying the bridge could survive such a long and dangerous trip only to catch fire and sink within a stones throw from its destination. All crew and passengers made it safely to shore. Apparently back in the day shipping companies were poorly paid for their efforts and the insurance from a sunken ship was a much greater reward. It was not uncommon for a ship to mysteriously sink close to the safety of land.

I wrote this article because I found it interesting that two identical iron truss bridge's coming out from England could end up looking so different. The Yarra version being hidden under the road and the iconic Redesdale Bridge standing as a constant reminder of it's own and the wider community's long history.

Regards Andrew Campbell.





KOSMAC & CLEMENS OPTOMETRISTS

Open for appointments

Tuesday, Wednesday & Friday

- Eye Testing
- Over 400 frames
- Contact Lenses



59 High Street Heathcote

For appointments
please phone 4411 6802

NOW IN HEATHCOTE

Palmer Stevens & Rennick Barristers & Solicitors

Founded 1852



Palmer Stevens & Rennick

provide advice to clients all over Australia.

- Powers of Attorney
- Wills and Estates
- Criminal Law
- Conveyancing
- Property Law
- Family Law
- Agribusiness Law
- Commercial Litigation
- Traffic Law and Toll Fines
- Appearing in all Courts
- Pre purchase advice for large Agribusiness Assets
- Compensation for Government Acquisitions



Mr Joseph Palmer
Founder of
Palmer Stevens & Rennick

8 Jennings Street, Kyneton
or P.O. Box 1, Kyneton Vic 3444
Phone: (03) 5422 6500 Fax: (03) 5422 3385
Email: psr@psr.net.au

KYNETON VETERINARY HOSPITAL



Send us a picture of your very special pet and a few words to describe him or her and why you love your pet so much.

Send to: bridgeconnection.editor@gmail.com

A prize at the end of the year will be awarded for the best entry.



Ginger Female Cat is the Winner of the 2022 Pet Pals

KYNETON VETERINARY HOSPITAL
Call us today 5422 1099

'Where animal lovers heal'

A good life deserves the best farewell

 **WILLIAM
FARMER**
FUNERAL DIRECTORS

Andrew and Heather Hampton
151 McCrae Street Bendigo
12 Victoria Street Eaglehawk

P: 5441 5577

www.williamfarmer.com.au

A tradition that continues...