



ISSUE NO: 140 July 2023

For the Mia Mia- Redesdale Region including:

- Heathcote • Derrinal • Glenhope • Baynton • Sidonia • Barfold
- Langley V Sutton Grange • Elphinstone • Kyneton • Metcalfe

BRIDGE CONNECTION COMMUNITY NEWSPAPER


<https://www.facebook.com/groups/897527781461431/>

Redesdale's Biggest Morning Tea *It Certainly Was!*



Top L-R Lin Newton, Anne Murray, Pan Prentegast, Kym De Lany and Craig Newton
Below : Beautiful cakes and products homemade alongwith generous donations

Monday 26th June saw the community of the Redesdale region come out to help raise money for the **Cancer Council's Biggest Morning Tea** event in the Redesdale Community Hall. As part of the standard entrance fee attendees received a tea or coffee, and a choice of scone (with jam and cream) or sausage rolls. Once their tastebuds were activated, they could continue the joy with more slices or cakes – to have there, or to take home for later.

All items available were graciously made and donated by, not just members of Redesdale and District Association and Redesdale Recreation Reserve Committee, but so many other community members who felt the desire to contribute to such a worthy cause.

It was wonderful to see such a cross-section of the community support such a worthy cause, and at the same time relax and catch up with other friends. The atmosphere was added to with acoustic background music provided by local band Crosswinds, whilst a brief talk from Frederika - who is living well after a cancer diagnosis - reminded everybody just how important the funds they contributed were. **Tania of Heathcote's Capture Your Essence** also provided of a complimentary 'Introduction to Chair Yoga'. Raffle prizes were also generously donated by **Maiaveda Spa of Kyneton** and **Gaffney's of Heathcote**.



**Cancer
Council**
Australia

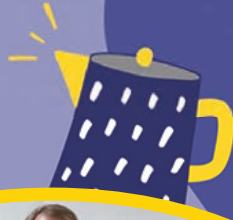
With all time, products and items donated by such a wide range of people, as well as the selflessness of the community members who found the time to attend, or donated online because they couldn't, I am thrilled to confirm the Redesdale community raised a...

...total of \$2,402!!

A result
everybody
should be
proud of.

For information of how funds support cancer research and treatment, please check out www.cancer.org.au

Redesdale's Biggest Morning Tea



*Enjoying the day
for a great cause*

The residents of Redesdale and surrounds enjoying the wonderful morning tea.
'Every dollar raised makes an incredible difference to those impacted by cancer.'



For information of how funds support cancer research and treatment, please check out www.cancer.org.au

Editorial

Dear Readers, Winter has really set in now.

It was great to see so many people at the Biggest Morning Tea and a great achievement to a small community to raise \$2,402 dollars for a great cause.

Congratulations to Marie Noonan for winning Swim Teacher for persons with a disability at this years ARV Awards.

Stay warm Regina



Regina Bennett

Editor: Regina Bennett

Ph: 0437514223

e: bridgeconnection.editor@gmail.com



The newly erected post box at the hall will serve as a drop box for any articles or letters you would like to post for possible inclusion.

text or call **0437 514 223** or email
bridgeconnection.editor@gmail.com

if you leave anything for us to collect

Bridge Connection - Mission Statement -

The mission of **Bridge Connection** is to bring people together by:

1. Providing information about local issues, goals and events, and to celebrate local achievements,
 2. Encouraging economic growth in the area
 3. Fostering geographic identity, and
 4. Providing a platform for public debate
- Bridge Connection is published by local people who volunteer, for local people as a **free paper** and on line at **redesdale.net** and via **face-book**



<http://www.facebook.com/groups/897527781461431/>

BRIDGE CONNECTION COMMUNITY NEWSPAPER

Advertising Rates/Sizes

Size	Height x Width	Price per issue	10 Editions
Business Card	55mm x 90mm	\$25	\$250
Quarter Page	130mm x 90mm	\$50	\$500
Half Page	130mm x 190mm	\$95	\$950
Full Page	270mm x 190mm	\$175	\$1,750

Colour Advertisements plus 20%.

**Please Note:
COPY DEADLINES
17th OF EACH MONTH**

Please send editorial or advertising copy to:
bridgeconnection.editor@gmail.com
or by post to **Regina Bennett 3465 Burke & Wills track Mia Mia 3444.**
For other editorial enquiries, please phone **0437 514 223**

Bridge Connection Distribution

950 Copies printed and distributed to Redesdale Mia Mia Region, including Barfold, Baynton, Derrinal, Elphinstone, Glenhope, Kyneton, Langley, Metcalf, Sidonia and Sutton Grange

Disclaimer: The Bridge Connection Inc. Committee wishes to advise that the views or remarks expressed in this publication are not necessarily the views of the volunteer Bridge Connection Inc. editorial or production team and no service or endorsement is implied by the listing of Advertisers, sponsors or contributors. Although every effort is taken in reproducing and printing advertisements correctly, we take no responsibility for errors.

Management Committee

President : **Gloria Pocock**

Secretary: **Regina Bennett** (03) 5425 5402
bridgeconnection.secretary@gmail.com

Treasurer: **Marisa Leahy** 0415 384 217

Magazine: **Regina Bennett - Editor** 0437 514 223

Never Stop Learning

Degrees,
Diplomas,
Certificates

APPLY NOW




RTO 3075



Congratulations Marie Noonan

Award for Swim Teacher for persons
with a disability at this years ARV
Awards






CV SHEDS
Est. 1995


Quality supplier and installer of:

- Farm Sheds - Work Shops
- Hay Sheds - Garages/Barns
- Quality RHS Frames
- All Australian Steel
- Shed Materials - purlins/
sheeting also available

*Been Building sheds in Central
Victoria for over 40 years*

Come and visit us at 12 Bourke St Kyneton
Mon- Fri 8 am to 4.30 pm, other times by appointment
03 5422 6644 or info@cvsheds.com.au KIN2450246 www.cvsheds.com.au





creative designs for your business

Proudly Sponsoring
assistance to the 'Bridge Connection'

logos menus flyers posters
invitations brochures magazines
business cards advertisements
letterheads with compliment slips
full business imaging

lyn ingles | graphic designer
blupen@bigpond.com
0429 911 980



Insure our way, the local way



Our team at Elders insurance Kyneton can look after all your insurance needs and is totally worthy of your trust. Because unlike other insurance providers we actually live and work in your community and take the time to come to you and understand your situation. We can even approve some claims on the spot.

Contact **Melanie Duggan**
for a personalised quote today
03 5423 3007



eldersinsurancekyneton@elders.com.au
83 Edgecombe Road, Kyneton
Elders Insurance Kyneton

Falconer Holdings Pty Ltd atf RJ & SA Falconer Family Trust ABN 27733987494 trading as Elders Insurance Kyneton AR No. 285618 is an Authorised Representative of Elders Insurance (Underwriting Agency) Pty Limited (ABN 56 138 879 026, AFSL 340965) (EIIUA), EIIUA, acting under its own AFSL, is authorised to distribute Elders Insurance products on behalf of OBE Insurance (Australia) Limited (ABN 78 003 191 035, AFSL 239545), the product issuer. Visit www.eldersinsurance.com.au to consider the Product Disclosure Statement and any applicable Target Market Determination to decide if the product is right for you.



evolution pools

Concrete &
Fibreglass Pools

Pool Shop &
Service Department

127 Strickland Rd,
East Bendigo

www.evolutionpools.com.au

Travel Guide

Djibouti – Djibeauty!

Like most people reading this, I have grown up watching sad images of poverty and starvation in the Horn of Africa on the TV news. Recently we have watched reports of refugees fleeing Sudan and horrible skirmishes in Eritrea and Ethiopia. It was with some trepidation, therefore, that Rod and I put our hands up to visit Djibouti which lies amongst these troubled countries.

The trip was part of a cruise that took us from Oman through the Gulf of Aden, Red Sea and through the Suez Canal. As you can see from the map, Djibouti is a tiny country, which used to be called French Somaliland. It lies on the coast between Eritrea to the north, Ethiopia to the west and Somalia to the south. The size of the country belies its regional importance as it has a deep-water port that serves the Indian Ocean and Red Sea traffic and also hosts a French naval base. Djibouti city (the capital) is also the railhead for the only line serving Addis Ababa, the capital of neighbouring Ethiopia. To the east, across the Red Sea is Yemen.

The population stands at about 1.35 million and about 90% of the population are Sunni Muslim. Because the country is mostly desert, or inhospitable mountains, there is very little agriculture, and the country depends on the trade afforded by its regional and geopolitical position.

The country has only recently opened itself up to tourism and the slogan is “Djibeauty”!

It is one of the growing economic sectors of the country and generates between 53,000 and 73,000 arrivals per year. There are sandy beaches and small islands to visit where scuba diving, fishing, bird-watching and hiking are apparently available.

We were only able to visit fleetingly and spent a day in the capital city. Some friends had hoped to visit one of the island beaches, but the trip was cancelled due to some administrative failure. And I must say, this was not surprising as our visit was beset by various mistakes and hiccups by the tourism services. Our guides spoke minimal English and were clearly not experienced.

The markets were very colourful and the people were friendly and kind but the temperature was searingly hot and there were few places to find shade.

Beside these setbacks, we felt very privileged to have been able to visit this tiny country and to witness the pure determination these people have

to survive and strive in such an inhospitable climate.

I loved the picture I took (with permission) of the very pregnant lady and estimate that her little baby would be two months old by now. I hope you like the picture of the taxi service which we resisted using.

I hope you have enjoyed this introduction to Djibouti. Now you will be one of very few people who have ever heard of this fascinating little country.

Kathy Hall



Left: Market



Above Taxi



left Pregnant lady - Djibouti.

The Art of Rustic Italian Cuisine

With Marisa

On Saturday June 24th a Filled Pasta Course was held by Marisa Leahy participants were lucky enough to see Marisa in action making an array of pasta. Then the group made Ravioli Di Ricotta.

The group then had a long lunch of

Brodo chicken soup

Ravioli di ricotta.

Prawn cannelloni di carne

Lasagna

Pannacotta with plums



You are warmly invited to

BARFOLD

COMMUNITY CHURCH

10.00 am each Sunday

followed by morning tea

1691 Kyneton-Heathcote Rd, Barfold

Contact: Russell 0484 700 909



UNITING CHURCH

10am Start

Morning Tea is shared before each service at 9.45



Mia Mia Church Service Service at
10am, morning tea at 9.45

**Check the Macedon Ranges Uniting
Church Website for extra news**

For more information go to

www.macedonrangesunitingchurch.org.au

CATHOLIC CHURCH

Redesdale 2nd Sunday of each month 11am

Lisa Chesters MP

FEDERAL MEMBER
FOR **BENDIGO**

☎ 5443 9055

🌐 lisachesters.org

Authorised by Lisa Chesters, ALP,
16 Myers St, Bendigo



ADVERTISEMENT

COMMUNITY DEFIBRILLATOR

Located on the side of the Redesdale fire station
Access code is 3444 (Redesdale post code)

The Community owned defibrillator
is now accessible to all
community members.



Turn your house
into a home
with Tucks
locally made products



- Aluminium and Timber Windows
- Window Replacements • Security Doors
- Shower Screens • Wardrobe Doors

We are in your area regularly
and offer a **FREE** measure
and quote service.

We can offer supply and install prices.



**Tucks
Windows
BENDIGO**

Celebrating 43 Years
providing top quality
products and
professional
friendly service.

P: 03 5446 8855

E: quotes@tuckswindows.com.au

www.tuckswindows.com.au

While we are now in the middle of winter and we have already dragged out the good old "Smoke detectors save lives" slogan last month. The directive now from the CFA is to fit a smoke alarm in your garage.

Unfortunately a number of house fires are starting, mainly due to electrical fault, in the shed or garage. These buildings once designed to house the family car and various sporting equipment are increasingly being used for outside entertainment, alfresco dining or the man cave. This increase in electrical drain caused by the Fridge, TV, heating, cooling, cooking and sound system is often too much for the limited number of power outlets. We are finding that people will do the right thing in the house but are overloading power boards and using piggyback double adapters in the shed. The safest way to go is to transfer your fire safe standards to the shed and consider another smoke alarm (Some of the more advanced models can be linked to the home smoke alarm/s).

The main cause of house fires in the metropolitan area, according to the MFB, is unattended stovetops. The stats show that the most likely time for a fire is 6pm, located in the kitchen and originating from the top of the stove. The best way to avoid this is, obviously, to never leave the cooker unattended but if the worst happens then a fire proof blanket is the best option. Not water. Smothering the fire may put it out or at least slow it down until help arrives.

Still on house fires, we recently had one in School road Redesdale. The fire started on the Sunday night of the Kings Birthday long weekend. The fire was contained mainly to one room of the treated pine log cabin with some smoke damage to other rooms. Thanks to those who attended and to the surrounding brigades of Mia Mia, Langley-Barfold and Elphinstone.

Meanwhile, heed the warnings, and stay safe.

Andrew Campbell

Fire Prevention Officer.



PLEASE NOTE:

Views expressed in this newsletter are not necessarily the views of the publisher of The Bridge Connection.

Woodchop events facing the axe - 2

In the Bridge Connection of March this year (2023), issue no.136, there was a letter/article from opposition politician Lachlan Durling headlined 'Woodchop events facing the axe'. I do not intend addressing the party-political content of that article, but there's a couple of statements that should be addressed.

Mr Durling stated that the state "... government continues to fail Victoria's timber industry". In fact, the organization most responsible for the parlous state of native forest management and timber harvesting is the Victorian timber industry itself. For decades, native forests have been over-harvested. That is, timber has been cut & removed far faster than the regrowth can replace it. Unrealistic assessments of available timber have led to contracts that permitted the removal of far more timber than could be replaced in a lifetime. The state government department responsible for managing timber harvesting has tolerated this problem, with the obvious eventual outcome of not enough quality timber left to sustain the industry. This happened, even though national park & reserve boundaries were drawn to carefully exclude stands of quality sawlogs (with a small number of exceptions). Furthermore, comprehensive timber harvesting was allowed inside the proposed reserves before their accession to the reserve network. The forests industry should look to itself for an explanation of why the government intends to cease native forest logging.

Secondly any cessation of native forest logging does not apply to plantations nor to forests on private land. If woodchopping events need new sources of logs for woodchopping events then plantations or private forests are an obvious source. It is likely that civilization will survive the demise of harvesting in native forests.

David Cheal



Redesdale & Surrounds Comming events

JULY

Fri: 14th - Bendigo ,Australian Sheep and Wool Show

Prince of Wales Showgrounds,

AUGUST

Sat: 5th -Bendigo Dinner Ghost Tour
shamrock Hotel

SEPTEMBER

Thurs 31/9– Sunday 10,10,23

Kyneton Daffodil & Arts

Festival & Festival Open Gardens

Friday 29th – Sunday 01/10:

Legendary Vic State Championships

Endurance Horse Riding Mia Mia

OCTOBER

Sun: 1st 2am Daylight Saving begins

Move clocks forward 1 hr

for more information - redesdale.net

- <https://www.heathcote.org.au- kyneton.org.au>
- <https://www.bendigoregion.com.au>
- <https://www.bendigoregion.com.au/visit-castlemaine-maldon>
- <https://www.bendigoregion.com.au/visit-maryborough-surrounds-victoria>
- <https://www.bendigoregion.com.au/visit-loddon-valley>

Ballan Local Farmers and Makers Market.
2nd Saturday of every month. **9.00 - 1.00pm**

Castlemaine. Local Farmers Market.
1st Sunday of every month. **9.00 - 1.00pm**

CFM. Weekly Market, Wednesday. **2.30 - 5.30pm**

Clunes. Local Farmers Market
2nd Sunday each month. **8.30 - 1.00pm**

Creswick. Local Farmers Market
3rd Saturday every month. **9.00 - 1.00pm**

Daylesford. Local Market.
Every Sunday. **8.00 - 3.00pm**

Gisborne. Olde Time Market.
1st Sunday every month. **9.00. - 2.00pm**

Kyneton. Local Farmers Market.
2nd Saturday every month. **8.30 - 1.00pm**

Lancefield. Local Farmers Market.
4th Saturday every month. **9.00 - 1.00pm**

Maldon. Local Farmers Market.
2nd Sunday every month.

Malmsbury. Local Farmers Market.
3rd Sunday every month. **9.00 - 1.00pm**

Talbot. Local Farmers Market.
3rd Sunday every month. **9.00 - 1.00pm**

Trentham. Local Farmers Market.
3rd Saturday every month. **9.00 - 1.00pm**

Woodend. Local Farmers Market
1st Saturday every month. **9.00 - 1.00 pm**

REDESDALE COMMUNITY HALL & PAVILION AVAILABLE FOR HIRE

Redesdale gives you a choice of venues for your next party, meeting or event:

Redesdale Hall: 160 sqm floor space with stage and expansive catering kitchen, as well as on-site restrooms.

Redesdale Pavilion: 108 sqm floor space with panoramic windows overlooking the Redesdale Reserve Oval.

Either of these wonderful facilities are available for community events (1) or public use (2).

- (1) Community - Use of facility targeting community benefit.
Entrance/participation fees are not charged by organiser.
- (2) Retail - Use of facility for private or business use.
Entrance/participation fees may be charged by organiser.

Equipment Rental Check out the extensive furniture & equipment below to help you hold your event at home

Item:	Available	Item:	Available
Commercial sized steel roaster	1	4 burner BBQ	1
Marquee (Large), 6m x 12m	1	Table cloths, white	10
Marquee (Small), 3m x 3m	1	Chairs, green steel	80
Tables, plastic, 1.8m x 1m	10	Chairs, white plastic	80
Tables, wood, 1.8m x 1m	20	Umbrellas, charcoal	10

For all inspections and enquiries contact Redesdale Recreational Reserve Committee:

E: 3444reserve@gmail.com

M: 0408 890 060



THE REDESDALE HOTEL

Central Victoria's Favorite Country Pub

For bookings please call (03) 4405 0601

Wednesday & Thursday 12pm – 9pm Lunch & Dinner

Friday – Sunday 12pm – Late Lunch & Dinner

PUBLIC HOLIDAYS – Phone for details

Kitchen closes at 8pm everyday

The Redesdale Hotel

2640 Heathcote - Kyneton Road

Redesdale Vic 3444

info@theredesdalehotel.com.au



The Redesdale Hotel

[redesdalehotel](https://www.redesdalehotel.com.au)



www.theredesdalehotel.com.au

SUPPORT YOUR ADVERTISERS

‘THE BRIDGE CONNECTION COMMUNITY NEWSPAPER’

...is **supported** by **local businesses**

and it is important, in return

for the community to **support them**.

For rural regions to succeed in business
they need the ‘locals’ to keep them viable
by conducting business in our township.

So! next time you need something for a job
that you are working on... look to the

‘**Bridge Connection**’ and give

a **LOCAL BUSINESS** a try.

**BUY LOCAL
WHERE YOU
ARE ABLE TO.**

**SUPPORT THE TOWN THAT
SUPPORTS YOU... THANK YOU!**



To advertise in the ‘Bridge Connection’
please contact the Editor

Regina Bennett on: **0437 514 223** OR email
bridgeconnection.editor@gmail.com



May Rain Fall

Redesdale 37.80mm Year to date 160.00mm

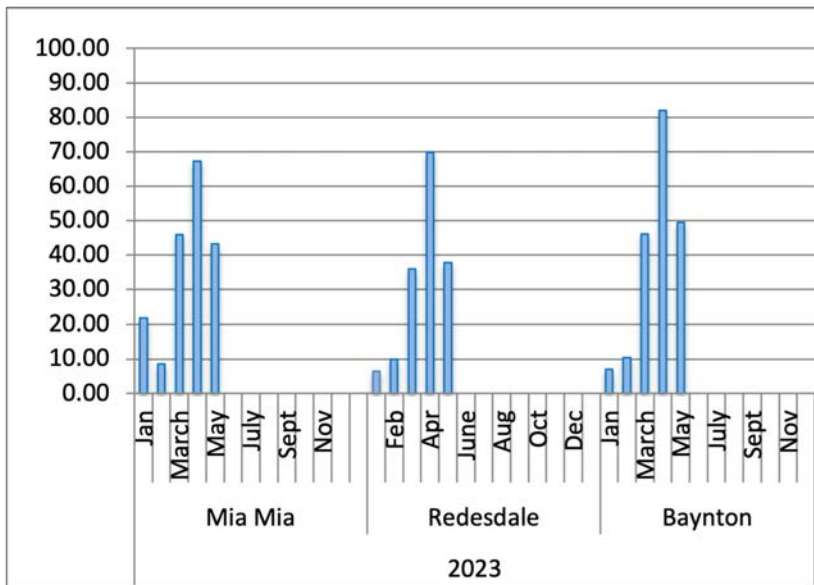
Mia Mia 43.25mm Year to date 186.90mm

Baynton 49.60mm Year to date 195.20mm

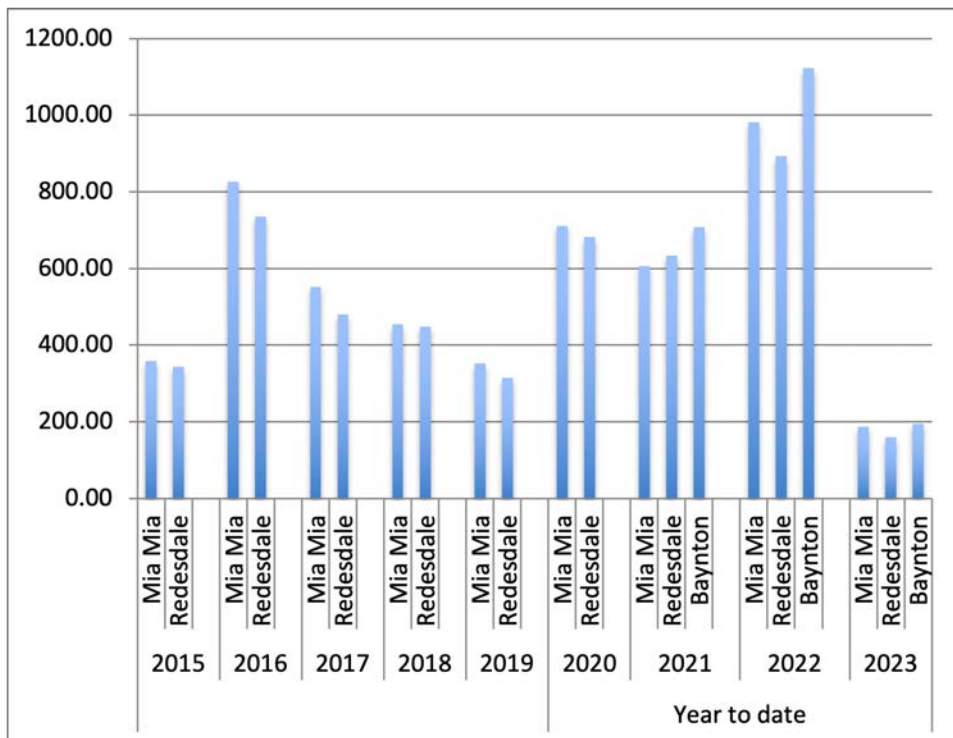
The average yearly rainfall for **Redesdale** is about 601mms.

Thank you to **Helen Bennett** for the
Mia Mia readings & **Belinda Ryan** for
Baynton readings

Year Totals for Previous Years



2017	Mia Mia	551.75
	Redesdale	479.60
2018	Mia Mia	455.00
	Redesdale	448.40
2019	Mia Mia	352.00
	Redesdale	315.00
2020	Mia Mia	711.25
	Redesdale	682.85
2021	Mia Mia	593.50
	Redesdale	634.40
	Baynton	707.80
2022	Mia Mia	981.50
	Redesdale	894.00
	Baynton	1122.30



RECIPE OF THE MONTH

Brodo Chicken Soup

77



1 whole chicken
1 carrot, peeled
1 onion, peeled
3 stalks celery
Handful parsley (including stalks)
2 tablespoons salt

Put all these ingredients into a stock pot and cover with cold water.
Place on medium-high heat and gradually bring to a boil.
Skim and remove any scum that rises to the top.
Simmer for a total of 3 hours.
Strain and place in fridge or freezer till needed.

Fresh Egg Pasta to go with the chicken soup **(Pasta Fresca all'uova)**

200 g plain flour
(Or 200g of tipo 00)
2 eggs
½ teaspoon salt

Place the flour in a mound on a clean work surface and make a well in the centre,
Add the eggs and salt.
Using a fork or your fingertips, begin by mixing the ingredients and slowly incorporating the flour from inside the well. Be careful not to break the wall of the flour, continue until the mixture is thick enough to form a dough.
Knead the dough with the palm of your hands until it becomes smooth and pliable; this may take 7 to 10 mins of continuous kneading. If you find the dough becomes sticky at any point, just dust with a little more flour, if dry dampen your hands with water.
Form the dough into a ball and leave it to rest for 30 minutes. This allows the gluten to relax.
Using a rolling pin roll the dough out till very fine approx. 1/8 centimetre
Cut into strips about ½ centimetre wide, then cut again into small squares for soup.
If you have a pasta machine, cut the dough into equal pieces about 1 cm in thickness.
Keep the unused pieces of dough covered to stop them drying out. work the dough through the machine at least 3 times on the widest setting, folding the dough over onto itself each time.
Continue the process of passing the each piece of dough 3 times through the machine reducing the setting at each step until you reach the setting you require. Dust the pasta sheet with flour then repeat this process until all the dough has been rolled out.
The sheets are now ready to be cut into the fettucine size, then cut them into small squares. Boil the pasta in the soup for 2 minutes.

Marisa Leahy

Plant of the Month

Alyogyne huegelii

“Native Hibiscus”

This bush has beautiful purple flowers and is a great screening plant. It enjoys being pruned after it flowers in spring and can become quite dense. It thrives in our granitic soil and is frost hardy. Ours are looking fantastically healthy at the moment (see below) and are covered in buds. They are very rarely affected by pests. The bush can reach to about 2.5 metres. It prefers a sunny position but will manage some shade and will thrive in different soils providing it has good drainage. It’s a good “filler -upper” of difficult empty spaces in the garden.

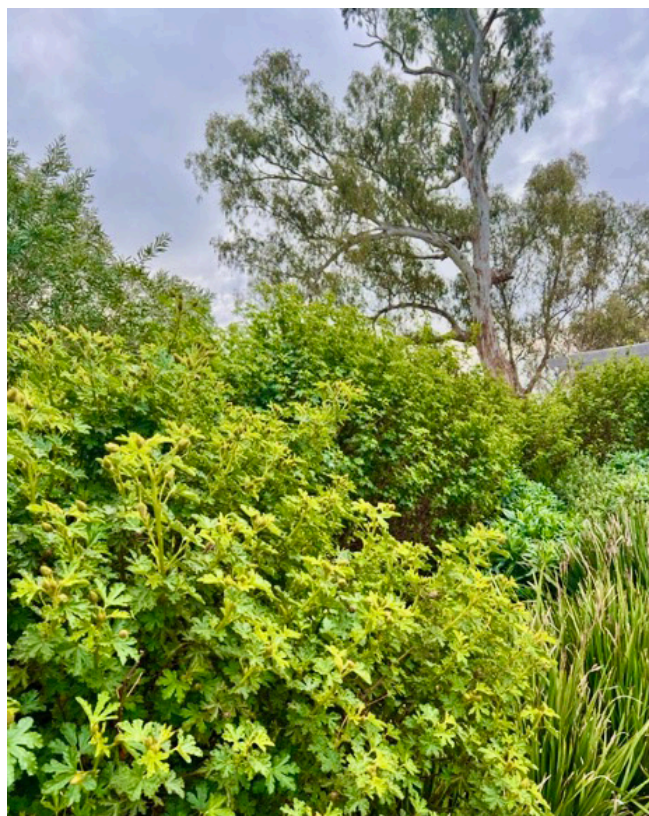
There are 5 species of this genus and all occur naturally only in Australia.

The flowers are mostly lilac or bluish purple and they only last 2 to 3 days but are constantly being replaced. Unfortunately, they do not last as cut flowers. Like all the plants we have featured in this series, the native hibiscus is very easy to strike from cuttings.

Happy Gardening

Kathy Hall

Coliban Springs



Native hibiscus hedge at Coliban Springs



Alygone huegelii - flower.

JULY Kitchen Garden Action



Plant or sow now

Artichokes – plant crowns

Asparagus - plant crowns

Rhubarb - plant crowns

Broad beans – sow direct (SD)

Coriander – SD

Endive - plant seedlings (PS)

English Spinach - PS

Lettuce - SD

Mint – SD in a pot to avoid spread in veg patch

Onion – SD

Peas – SD (soak overnight before planting out)

Snow Peas – SD ("" "" "" "")

Radish- SD

Potatoes – start chitting spuds in old egg cartons

Celery likes to be kept moist

Cauliflowers – as the heads appear and you want a white head, pull dry leaves over the heads and tie up with string.

Broccoli –harvest main head and watch for side shoots to develop

Tomatoes – get a start on Toms by planting seeds in seed trays for planting out in spring. Protect from the cold/frosts

Grow sprouts near a warm window in a glass jar with gauze across the mouth held with a rubber band. Rinse daily. Use when sprouted e.g. Mung, Alfalfa

Continue to check Brassicas for snails, slugs, caterpillars and grey aphids on stems and leaf joins.

Prepare empty beds for spring planting with planting of green manure.

Wisteria can be pruned this month. Cut them back to 2 or 3 buds from the base

Prune hydrangeas just above a fat bud.

Treat peaches for why leaf curl. Spray with a solution of either lime sulphur or copper hydroxide, covering all stem, branch and trunk surfaces. Apply a

follow-up spray in late winter, just before leaf and bud swell.

July 30 is National Tree Day – why not plant a tree!

Happy winter in your Kitchen garden

LITTLE FREE LIBRARY

want to know more?
visit
redesdale.net

PLEASE DONATE BY SIMPLY ADDING BOOKS, MAGAZINES AND DVD'S TO THE CABINET... *Thank you*

Located behind the
Community Notice Board
Inside the Redesdale Recreation Reserve
Redesdale Recreation Reserve,
2631 Kyneton - Redesdale Road
Redesdale Vic 3444



TRAVELLING BRIDGE CONNECTION COMPETITION

Take your **printed** copy or **Digital Copy** of Bridge Connection away with you or an onlie edition and send us a photo of you or someone else reading the paper.
Send it to us via email to

bridgeconnection.editor@gmail.com

or via text to 0407 116 899

to be in the running for a great prize at the end of the year!



Help shape the future of Redesdale

Be part of the team that helps develop the facilities, amenities, and the look of Redesdale's future.

A working group is being formed to help develop activities which will interest all age groups within Redesdale. The activities will be used to both introduce various people to each other, as well as to encourage feedback and ideas of their needs and wants. These can be part of Redesdale's next 5 year plan to be submitted to the City of Greater Bendigo.

The working group will consist of 8 people, and will be supported/guided by City of Greater Bendigo. Time commitments will NOT be huge, with possibly one brief meeting a month to develop and implement ideas.

Please contact Lin Newton (info@redesdale.net or 0418 583 304) for further details or to register your interest.

Remember the difference between two communities is the people.....



Mike Robinson distracted by Bridge Connection

POEM OF THE MONTH

If

By Rudyard Kipling

If you can keep your head when all about you
Are losing theirs and blaming it on you,
If you can trust yourself when all men doubt you,
But make allowance for their doubting too;
If you can wait and not be tired by waiting,
Or being lied about, don't deal in lies,
Or being hated, don't give way to hating,
And yet don't look too good, nor talk too wise:

If you can dream—and not make dreams your
master;
If you can think—and not make thoughts your
aim;
If you can meet with Triumph and Disaster
And treat those two impostors just the same;
If you can bear to hear the truth you've spoken
Twisted by knaves to make a trap for fools,
Or watch the things you gave your life to, broken,
And stoop and build 'em up with worn-out tools:

If you can make one heap of all your winnings
And risk it on one turn of pitch-and-toss,
And lose, and start again at your beginnings
And never breathe a word about your loss;
If you can force your heart and nerve and sinew
To serve your turn long after they are gone,
And so hold on when there is nothing in you
Except the Will which says to them: 'Hold on!'

If you can talk with crowds and keep your virtue,
Or walk with Kings—nor lose the common touch,
If neither foes nor loving friends can hurt you,
If all men count with you, but none too much;
If you can fill the unforgiving minute
With sixty seconds' worth of distance run,
Yours is the Earth and everything that's in it,
And—which is more—you'll be a Man, my son!

Knitting & Crochet GROUP



Get back to
Knitting or
Crochet...

- Learn new techniques
- Learn to Knit or Crochet
- Possible Knitting and Crocheting for charity

**Every Thursday 1pm - 3pm
at the Redesdale Reserve Pavilion**

If you are interested in joining please contact:
Gloria Pocock: gapocock@bigpond.com or
Regina Bennett: reginabennett@bigpond.com

Support your **community newspaper** the
'Bridge Connection'
who is supporting **your community**.

Visit: **www.redesdale.net**
district, events, businesses and news.

For more information turn to **page 3**
for advertising rates or call and chat to
Editor - **Regina Bennett 5425 5402.**

'Bridge Connection' Community Newspaper



We can spread any amount that you supply, usually off the ground via industrial loader. We can also get a bulk load and deliver to a number of smaller properties if required.

FERTILISER SPREADING SERVICE



**Contact
for a quote**

Please contact
Carl 0412 144 936
or **David 0427 546 586**

email: carl@glendarling.com.au
119 Darlington Road Baynton VIC 3444

No job too small,
no job too big,

Palmer Stevens & Rennick Barristers & Solicitors

Founded 1852

Palmer Stevens & Rennick

provide advice to clients all over Australia.

- Powers of Attorney
- Wills and Estates
- Criminal Law
- Conveyancing
- Property Law
- Family Law
- Agribusiness Law
- Commercial Litigation
- Traffic Law and Toll Fines
- Appearing in all Courts
- Pre purchase advice for large Agribusiness Assets
- Compensation for Government Acquisitions



Mr Joseph Palmer
Founder of
Palmer Stevens & Rennick

8 Jennings Street, Kyneton
or P.O. Box 1, Kyneton Vic 3444
Phone: (03) 5422 6500 Fax: (03) 5422 3385
Email: psr@psr.net.au

Bridge Connection Pet Pal's



Send us a picture of your very special pet and a few words to describe him or her and why you love your pet so much.

Send to: bridgeconnection.editor@gmail.com

A prize at the end of the year will be awarded for the best entry.



Gianni born 25/4/20 in Drummond. He is a vacuum when it comes to eating loves water and big walks. He chases rabbits but not very successful.

Currently un-sponsored

If you would like to be a sponsor contact
bridgeconnection.editor@gmail.com

A good life deserves the best farewell

**WILLIAM
FARMER**
FUNERAL DIRECTORS

Andrew and Heather Hampton

151 McCrae Street Bendigo
12 Victoria Street Eaglehawk

P: 5441 5577

www.williamfarmer.com.au

A tradition that continues...