



ISSUE NO: 141 September 2023

For the Mia Mia- Redesdale Region including:

- Heathcote • Derrinal • Glenhope • Baynton • Sidonia • Barfold
- Langley V Sutton Grange • Elphinstone • Kyneton • Metcalfe

BRIDGE CONNECTION COMMUNITY NEWSPAPER



<https://www.facebook.com/groups/897527781461431/>



Yarn Bombing in Redesdale June 2024

ARE YOU
INTERESTED
IN JOINING US
TO BRIGHTEN UP
REDESDALE IN
WINTER 2024?

We are 'Yarn Bombing' Redesdale in June 2024, to coincide with International Yarn Bombing Day, June 11, 2024.

We will decorate the Redesdale Hall fence to and including the gates and the surrounds of the hall verandah. We would like to include the noticeboard if we have enough help. *Are you interested in joining us?*

We need knitters and crocheters to make bunting triangles, 30cmx30cmx30cm, and strips 7cm x 90cm also squares 25cm x 25cm, and we will further welcome suggestions ... so please text 'Redesdale Yarners' on 0408 307 105.

For more information please contact us through our:
Facebook Group Bridge Connection Community Newspaper.

COVER CONCEPT COURTESY/ blue pencil publishing

Supporting your community

Proudly supporting
Heathcote Football Netball
Club



Honeyeater Bushland Reserve in Junortoun was supported by FGM to extend a wetland for an endangered toadlet.



Fosterville Gold Mine Community Grants – applications now open

The Community Grants Program aims to support initiatives which actively contribute to the growth of our local communities both now and into the future.

Applications open
Friday 25 August 9am
and close Monday
25 September at 5pm



AGNICO EAGLE
FOSTERVILLE

W: fgmcommunity.com.au

E: fgm.community@agnicoeagle.com

Editorial

Dear, readers

It's great to see some warm sunshine again, even though it means there is more weeding to do! We hope readers will join in the yarn bombing project which will bring smiles to faces in June next year.

We hope you all enjoy Andrew Campbell's reminiscences. What a great support he has been to so many Redesdale activities over many years. Thanks Andrew!

We would love to hear your memories too, dear readers.

Happy Spring!



Regina

Editor: Regina Bennett

Ph: 0437514223

Regina Bennett

e: bridgeconnection.editor@gmail.com



The newly erected post box at the hall will serve as a drop box for any articles or letters you would like to post for possible inclusion.

text or call **0437 514 223** or email
bridgeconnection.editor@gmail.com

if you leave anything for us to collect

Bridge Connection - Mission Statement -

The mission of **Bridge Connection** is to bring people together by:

1. Providing information about local issues, goals and events, and to celebrate local achievements,
 2. Encouraging economic growth in the area
 3. Fostering geographic identity, and
 4. Providing a platform for public debate
- Bridge Connection is published by local people who volunteer, for local people as a **free paper** and on line at **redesdale.net** and via **face-book**



<http://www.facebook.com/groups/897527781461431/>

BRIDGE CONNECTION COMMUNITY NEWSPAPER

Advertising Rates/Sizes

Size	Height x Width	Price per issue	10 Editions
Business Card	55mm x 90mm	\$25	\$250
Quarter Page	130mm x 90mm	\$50	\$500
Half Page	130mm x 190mm	\$95	\$950
Full Page	270mm x 190mm	\$175	\$1,750

Colour Advertisements plus 20%.

**Please Note:
COPY DEADLINES
17th OF EACH MONTH**

Please send editorial or advertising copy to:
bridgeconnection.editor@gmail.com
or by post to **Regina Bennett 3465 Burke & Wills track Mia Mia 3444.**
For other editorial enquiries, please phone **0437 514 223**

Bridge Connection Distribution

950 Copies printed and distributed to Redesdale Mia Mia Region, including Barfold, Baynton, Derrinal, Elphinstone, Glenhope, Kyneton, Langley, Metcalf, Sidonia and Sutton Grange

Disclaimer: The Bridge Connection Inc. Committee wishes to advise that the views or remarks expressed in this publication are not necessarily the views of the volunteer Bridge Connection Inc. editorial or production team and no service or endorsement is implied by the listing of Advertisers, sponsors or contributors. Although every effort is taken in reproducing and printing advertisements correctly, we take no responsibility for errors.

Management Committee

President : **Gloria Pocock**

Secretary: **Regina Bennett** (03) 5425 5402
bridgeconnection.secretary@gmail.com

Treasurer: **Marisa Leahy** 0415 384 217

Magazine: **Regina Bennett - Editor** 0437 514 223



We can spread any amount that you supply, usually off the ground via industrial loader. We can also get a bulk load and deliver to a number of smaller properties if required.

FERTILISER SPREADING SERVICE

Contact for a quote

Please contact
Carl 0412 144 936
 or **David 0427 546 586**

email: carl@glendarling.com.au
119 Darlington Road Baynton VIC 3444

No job too small, no job too big,

REDESDALE CFA NEWS

Hi. My head is full of statistics after just returning from the CFA Community Safety Officer's state conference. The CFA love the use of stats (and acronyms) to back up their point. One that really stands out is the correlation between non-working or no smoke alarms and house fatalities. The fact is that people die in homes without a working smoke alarm when there's a fire yet in a home with 3 or more working alarms, they don't.

There has been a push to get smoke alarms into all homes, especially the new Lithium battery type that have a 10 year shelf life. One brigade in the outer suburbs of Melbourne did an intense roll-out by door knocking and installing smoke alarms in over 300 homes. They installed around 900 alarms and along the way discovering one third of the homes had no smoke alarms at all. The stat that I found most amazing was that they also had to dispose of 315 smoke alarms from these homes. Many were damaged, painted over, did not work or were out of date. The smoke alarm will have a date on the back indicating when it needs replacing. I arrived home and went straight to the old alarm in the hallway only to find the words "replace by year 2020". Straight into the bin and off to Bunnings for a couple of new ones.

It's that time of year again when the grass is really starting to grow. It is also the time try and keep on top of it before it dries out. Another CFA stat is that a well maintained garden increases the chances of a house surviving a fire by 25%. I am not a keen gardener so a spray of Round-up is my preferred method. I understand that many of my neighbours refuse to use chemicals on their property and that's their choice. Whatever you do, every little bit of fuel reduction helps. There's a stat for that too.

I feel that there's a lot of helpful information out there but everyone's situation is different. I am keen to discuss with members of the community about their plans for the upcoming summer and so will be available for a chat and a cuppa at the Redesdale Fire Station on Thursday the 14th of September at 10am. Please feel free to call in.

Andrew Campbell

Community Safety Officer (CSO)



BRI
 BUSHFIRE RESILIENCE INC.

GET BUSHFIRE RESILIENT

INFORMATION FOR HOUSEHOLDS IN REGIONAL AREAS AND ON THE URBAN FRINGE

2023 FREE WEBINAR SERIES

An El Niño summer is coming

Recent rainfall has supercharged fuel loads. Dry conditions will increase fire risks next summer, especially grass fires

Watch the webinars with family and friends and discuss the information and your plans

BRI's webinars are presented by eminent subject experts. Learn how grass fires and bushfires behave and what your family can do to reduce your risks

Viewers can ask questions before or during the webinar, and when you register we'll also send you a link to videos.

To learn more about our presenters head to br.org.au/presenters

Supporters and Sponsors:



DAVEY

Rotary

Rotary

About Bushfire Resilience Inc. br.org.au/about

TO REGISTER VISIT BR.ORG.AU/WEBINAR OR SCAN QR CODE



Pets and bushfires – what do we know?

7:30pm AEST Wednesday 9 August
 • Mel Taylor, Macquarie University
 • Steve Glassey, University of Portsmouth
 • Rachel Westcott, South Australian Veterinary Emergency Management Inc.

Getting ready for an El Niño summer

7:30pm AEST Wednesday 16 August
 • Craig Lapsley, Innovation Pro Pty Ltd
 • Parvathi Subramaniam, The University of Sydney
 • Danielle Clode, Flinders University

Reducing risks for people and houses

7:30pm AEST Thursday 31 August
 • Justin Leonard, CSIRO

Grass fire and bushfire behavior

7:30pm AEST Wednesday 13 September
 • Kevin Tothorst AM, University of Melbourne
 • Justin Leonard, CSIRO

Safety actions for the fire season

7:30pm AEST Wednesday 4 October
 • Craig Lapsley, Innovation Pro Pty Ltd
 • Jamie Mackenzie, Red Flag - Real Time Leadership Solutions
 • Steve Pascoe, Resident, Strathewen, Victoria



Eppalock Ward Listening Post

Come and discuss issues
that are important to you
and your community with
your local Councillors.



SATURDAY SEPTEMBER 2

11am - 12.30pm

Redesdale Community Hall,
Agnes Mudford Reserve,
Heathcote-Kyneton Road, Redesdale

Ph 1300 002 642
www.bendigo.vic.gov.au



Quality supplier and installer of:

- Farm Sheds - Work Shops
- Hay Sheds - Garages/Barns
- Quality RHS Frames
- All Australian Steel
- Shed Materials - purlins/
sheeting also available

*Been Building sheds in Central
Victoria for over 40 years*

Come and visit us at 12 Bourke St Kyneton

Mon- Fri 8 am to 4.30 pm, other times by appointment

03 5422 6644 or info@cvsheds.com.au

www.cvsheds.com.au



creative designs for your business

logos menus flyers posters
invitations brochures magazines
business cards advertisements
letterheads with compliment slips
full business imaging

lyn ingles | graphic designer
blupen@bigpond.com
0429 911 980

Proudly Sponsoring
assistance to the 'Bridge Connection'



Insure our way, the local way



Our team at Elders insurance Kyneton can look
after all your insurance needs and is totally worthy
of your trust. Because unlike other insurance
providers we actually live and work in your
community and take the time to come to you
and understand your situation. We can even
approve some claims on the spot.

Contact **Melanie Duggan**
for a personalised quote today
03 5423 3007



eldersinsurancekyneton@elders.com.au
83 Edgecombe Road, Kyneton
Elders Insurance Kyneton

Falconer Holdings Pty Ltd atf RJ & SA Falconer Family Trust ABN 27733987494
trading as Elders Insurance Kyneton AR No. 285618 is an Authorised Representative
of Elders Insurance (Underwriting Agency) Pty Limited (ABN 56 138 879 026,
AFSL 340365) (EIIUA), EIIUA, acting under its own AFSL,
is authorised to distribute Elders Insurance products on behalf of QBE Insurance
(Australia) Limited (ABN 78 003 191 035, AFSL 239545), the product issuer.
Visit www.eldersinsurance.com.au to consider the Product
Disclosure Statement and any applicable Target Market Determination to decide
if the product is right for you.



evolution pools

Concrete &
Fibreglass Pools

Pool Shop &
Service Department

127 Strickland Rd,
East Bendigo

www.evolutionpools.com.au

This is My Life: Andrew Campbell

This is My Life: Andrew Campbell

I was born in 1966 at Kyneton hospital to Jessie and Ian and am one of 5 siblings. Mum was a Hendy from Tooborac. The Campbell family originally settled in Meadow Valley, Mia Mia in 1866. Dad purchased our farm "Windomal" in Redesdale in 1942.

Growing up on our family farm in Redesdale one of my earliest memories is being dragged away from a comfortable child's life to become part of this strange (and unwelcome!) world of school. Back then you needed 7 students to keep a school going (Lindsay Thompson was Education Minister who wanted to close small schools down) so with the Redesdale school in danger of closing, I was somehow enrolled to 'save the school'! I began my school year when I turned 5 in the September, spent 3 months in prep and then started the next year in grade one. Thus I was condemned to being the perennial youngest in my grade all the way through school. Barfold's school had closed, then Sutton Grange and Metcalf's too. Interestingly, Mia Mia – in my time – had 40 students from a huge catchment area and even a bus that collected kids from as far as Lancefield to Heathcote.

Then it closed too and amalgamated with Redesdale. I had 2 great blokes for teachers and even managed to find a school photo with Ian Perry in it (see below). Ian and Keith Chambers were both keen sportsmen and their families helped boost our sporting team numbers!

Sport was a huge part of our lives growing up in Redesdale. When we weren't riding our bikes or climbing the nearest tree, we were playing football, cricket or tennis. There was always some game that needed continuing after the school bell went. It was safe and we were safe, so our pickup times from school were vague – which just meant more time to finish that match or game.

One of only 2 occasions when all our parents picked us up on time was the day the radio news was flooded with bulletins of a small central Victorian school kidnapping. Faraday. The kidnappers would have driven past us – with the students in their van – to hid in a cave in Benloch, near Lancefield. This was national news and was even made into a (Grundy production) film.



Back row: Robbie Stables, Billy Kriewaldt, Roger Job, me, Dean Kriewaldt and Leonie Job.

Front row: Ivan Job, Bruce Knight, Deidre Newnham Debra Dannett Darren Cogle.

The 2nd time was when the 'after dark bandit' was at large. Known for robbing TABs late in the day and then disappearing into the darkness. Heathcote had 3 banks and a TAB and so was an obvious target. Peter Morgan shot the local Heathcote copper and was thought to have fled in the direction of Redesdale. After school we were greeted with police checking cars and roadblocks everywhere. The officer was OK, but Morgan remained at large for some time. Turns out he was a twin and together he and Doug had been getting away with it for years!

Out of school and into my mid 20's and my mates decided it was time for me to settle down – and they'd help me find my 'perfect match': a girl from Bendigo. After some false starts, our paths finally crossed at a CFA fundraiser at the Brolga Hotel (no longer on the shores of Lake Eppalock, sadly). At the end of the night there were more people than car seats, so 'conveniently' Lisa had to sit on my lap. What a set up: subtle as a sledgehammer, my mates – but the rest is history and we're still together.

This picture is one of my favourites. It would have been taken around 1964 and features a break in our shearing for smoko. On the left is our wool classer Max Job. He was well respected and classed in many sheds around the district. The two on the right are our shearers, Dick Kennedy and Jack Conally (far right). These two were in danger of

giving the shearing profession a good reputation with both being hard workers and true gentlemen. Dick was always concerned about Mum or my sisters Lynne and Merrill coming into the shed, just in case someone let a swear word go. Also significant is photographic evidence of Dad and my brother Bruce being together and not arguing.

I later followed the family tradition of becoming a wool classer. Spurred on by my shearing contractor who told me that I would never make it as a shearer. I got my wool-classing certificate and looking back " Dicko " did me a big favour with his brutal honesty.

In 1991 my mum passed away suddenly. We were all shocked, none more so than Dad. I don't think he ever recovered. I chose to stay at home as Dad and I worked together on the farm. In 1996, Lisa and I bought our 1st house in School Lane and married the next year. Both Tahlia and Hamish were born there.

With Lisa working full time at the Bendigo Bank and most of my wool-classing work north of Bendigo, we made the decision to move to Golden Square. Dad then decided, at the tender age of 83 to retire from farming. We moved back to the farm in 2008 not long after Dad passed away. Campbell kids were back in the Redesdale and Mia Mia School and I gave up my wool classing jobs to concentrate



continued page 8.

on being a full time farmer. This was all good for 6 months and then Black Saturday arrived. Everything changed. The road to recovery was long and arduous. But there was a silver lining to this terrible time as there were lots of local fundraising events and we forged some great friendships.

We received so much help from community groups and houses, charities and every religious group known to mankind. We felt a huge debt of gratitude and decided when the opportunity presented, we wanted to return the goodwill. In 2014, we chose to donate a parcel of land to the Otis Foundation to support those recovering from breast cancer. It's one of the best things we've ever done. We've become part of the Otis family and met so many truly amazing people. On average, 100 families stay at "Kez's Hideaway" each year. We are constantly being told what a great, peaceful break this affords these families at what must be such a stressful time. They also tell us how much they enjoy the area: the wineries, cafes, and the Pub.

A big part of the Redesdale community is the CFA. It has been a big part of my life too. It's a constant frustration that it's so hard to get new members through what is a long and difficult induction process. Things were different back in 1983 when I was enjoying a beer while watching the cricket at Mia Mia. Our secretary approached me claiming he didn't know I was 18, I told him I was (well almost) and so he signed me up. I was immediately eligible to fight fires.

It was a similar story with getting my truck licence. Tom James and I were the younger members of the brigade and were sent into Heathcote police station to get our licences. Tom put the truck through its paces with the local constable and passed easily. When it was my turn, I'd just got started when his pager went off. He was called out to some incident and quickly asked if I knew how to do a U turn and a handbrake start. I replied, "yes" and he said, "Congratulations, now you have a truck licence!"

Dad was instrumental in the formation of the brigade back in the day and was awarded a life membership. It was with great pride for me that recently my peers saw fit to award me with a life membership as well. It is surreal to look at the honour board and see my name up there too.

We have watched Redesdale evolve and I have enjoyed being part of the community. I have seen our small town grow, mainly from being a place where people using Eppalock would purchase a cheap weekender, to the lifestyle farmlets that are appearing now. I look forward to the future, whatever it holds!

Andrew


**creative
designs
for your
business**

Proudly Sponsoring
assistance to the 'Bridge Connection'

logos menus flyers posters
invitations brochures magazines
business cards advertisements
letterheads with compliment slips
full business imaging


lyn ingles | graphic designer
blupen@bigpond.com
0429 911 980







**LITTLE FREE
LIBRARY**

want to know more?
visit
redesdale.net



FREE LIBRARY

Please 'donate' by simply adding
Books, Magazines and DVD's
to the cabinet... *Thank you*

Located behind the
Community Notice Board
Inside the Redesdale Recreation Reserve
Redesdale Recreation Reserve,
2631 Kyneton - Redesdale Road
Redesdale Vic 3444

Annabelle
CLEELAND MP
Proudly supporting the
Redesdale Community
🌐 AnnabelleCleeland.com.au
📍 25 Bridge St E, Benalla
📞 @ Annabelle4Euroa ☎️ 03 5762 1600
✉️ Annabelle.cleeland@parliament.vic.gov.au Member for Euroa



experiences with phone and internet connection as I work to resolve this.”

Ms Cleeland said issues with the quality of the roads, and the dwindling road maintenance budget, were also one of the community’s biggest concerns.

“I want to bring attention to some of our region’s worst roads,” Ms Cleeland said.

“Sadly, road maintenance and the road resurfacing budget have all but been abandoned under

this Labor Government.

“If you are aware of roads that are unsafe, filled with serious potholes, or just poorly maintained,

please get in contact with me so that I can raise this issue in Parliament.”

Ms Cleeland can be contacted at **(03) 5762 1600** or by emailing

Annabelle.cleeland@parliament.vic.gov.au.



Cleeland Cuppa with Redesdale residents



Gloria Pocock , Annabelle Cleeland & Regina Bennett

Local Member reaches out to Redesdale community

Nationals Member for Euroa Annabelle Cleeland is reaching out to the Redesdale community,

calling on their help to bring attention to ongoing road maintenance and telecommunications

issues in the region.

Ms Cleeland was in Redesdale for a “Cleeland Cuppa” at the start of August, helping members of

the community complete their \$250 Power Saving Bonus.

“One of the big issues brought up was improving the quality and reliability of telecommunications

in the area,” Ms Cleeland said.

“I have been meeting with Telstra as we work through some of the telecommunications challenges

ahead of the bushfire season.

“We must ensure that the community remains safe and is able to reliably contact friends, family,

and emergency services if necessary.

“As these conversations continue, I would love to hear more from you about your local



Redesdale & Surrounds Comming events

Ballan	Local Farmers and Makers Market. 2nd Saturday of every month.	9.00 - 1.00pm
Castlemaine.	Local Farmers Market. 1st Sunday of every month.	9.00 - 1.00pm
CFM.	Weekly Market, Wednesday.	2.30 - 5.30pm
Clunes.	Local Farmers Market 2nd Sunday each month.	8.30 - 1.00pm
Creswick.	Local Farmers Market 3rd Saturday every month.	9.00 - 1.00pm
Daylesford.	Local Market. Every Sunday.	8.00 - 3.00pm
Gisborne.	Olde Time Market. 1st Sunday every month.	9.00. - 2.00pm
Kyneton.	Local Farmers Market. 2nd Saturday every month.	8.30 - 1.00pm
Lancefield.	Local Farmers Market. 4th Saturday every month.	9.00 - 1.00pm
Maldon.	Local Farmers Market. 2nd Sunday every month.	
Malmsbury.	Local Farmers Market. 3rd Sunday every month.	9.00 - 1.00pm
Talbot.	Local Farmers Market. 3rd Sunday every month.	9.00 - 1.00pm
Trentham.	Local Farmers Market. 3rd Saturday every month.	9.00 - 1.00pm
Woodend.	Local Farmers Market 1st Saturday every month.	9.00 - 1.00 pm

SEPTEMBER

Thurs 31/9– Sunday 10,10,23

Kyneton Daffodil & Arts

Festival & Festival Open Gardens

Friday 29th – Sunday 01/10:

Legendary Vic State Championships

Endurance Horse Riding Mia Mia

OCTOBER

Sun: 1st 2am Daylight Saving begins

Move clocks forward 1 hr

for more information - redesdale.net

- <https://www.heathcote.org.au- kyneton.org.au>
- <https://www.bendigoregion.com.au>
- <https://www.bendigoregion.com.au/visit-castlemaine-maldon>
- <https://www.bendigoregion.com.au/visit-maryborough-surrounds-victoria>
- <https://www.bendigoregion.com.au/visit-loddon-valley>

REDESDALE COMMUNITY HALL & PAVILION AVAILABLE FOR HIRE

Redesdale gives you a choice of venues for your next party, meeting or event:

Redesdale Hall: 160 sqm floor space with stage and expansive catering kitchen, as well as on-site restrooms.

Redesdale Pavilion: 108 sqm floor space with panoramic windows overlooking the Redesdale Reserve Oval.

Either of these wonderful facilities are available for community events (1) or public use (2).

- (1) Community - Use of facility targeting community benefit.
Entrance/participation fees are not charged by organiser.
- (2) Retail - Use of facility for private or business use.
Entrance/participation fees may be charged by organiser.

Equipment Rental Check out the extensive furniture & equipment below to help you hold your event at home

Item:	Available	Item:	Available
Commercial sized steel roaster	1	4 burner BBQ	1
Marquee (Large), 6m x 12m	1	Table cloths, white	10
Marquee (Small), 3m x 3m	1	Chairs, green steel	80
Tables, plastic, 1.8m x 1m	10	Chairs, white plastic	80
Tables, wood, 1.8m x 1m	20	Umbrellas, charcoal	10

For all inspections and enquiries contact Redesdale Recreational Reserve Committee:

E: 3444reserve@gmail.com

M: 0408 890 060



THE REDESDALE HOTEL

Central Victoria's Favorite Country Pub

For bookings please call (03) 4405 0601

Wednesday & Thursday 12pm – 9pm Lunch & Dinner

Friday – Sunday 12pm – Late Lunch & Dinner

PUBLIC HOLIDAYS – Phone for details

Kitchen closes at 8pm everyday

The Redesdale Hotel

2640 Heathcote - Kyneton Road

Redesdale Vic 3444

info@theredesdalehotel.com.au



The Redesdale Hotel

[redesdalehotel](https://www.redesdalehotel.com.au)



www.theredesdalehotel.com.au

SUPPORT YOUR ADVERTISERS

‘THE BRIDGE CONNECTION COMMUNITY NEWSPAPER’

...is **supported** by **local businesses**

and it is important, in return

for the community to **support them**.

For rural regions to succeed in business
they need the ‘locals’ to keep them viable
by conducting business in our township.

So! next time you need something for a job
that you are working on... look to the

‘**Bridge Connection**’ and give

a **LOCAL BUSINESS** a try.

**BUY LOCAL
WHERE YOU
ARE ABLE TO.**

**SUPPORT THE TOWN THAT
SUPPORTS YOU... THANK YOU!**



To advertise in the ‘Bridge Connection’
please contact the Editor

Regina Bennett on: **0437 514 223** OR email
bridgeconnection.editor@gmail.com



July Rain Fall

Redesdale 38.40mm Year to date 317.40mm

Mia Mia 35,50mm Year to date 350.65mm

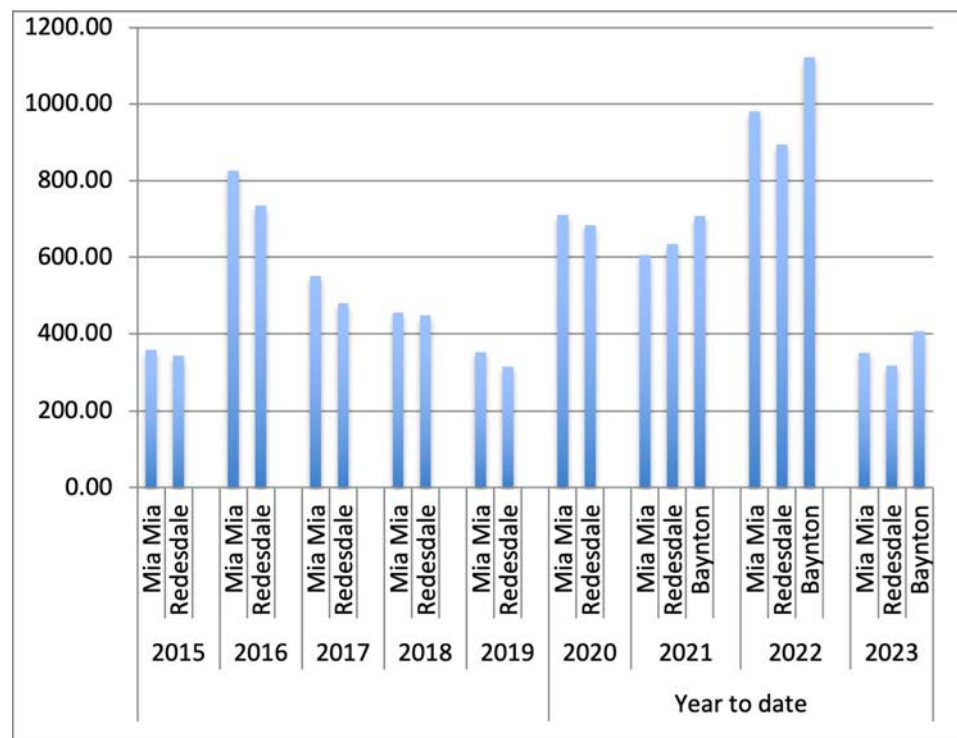
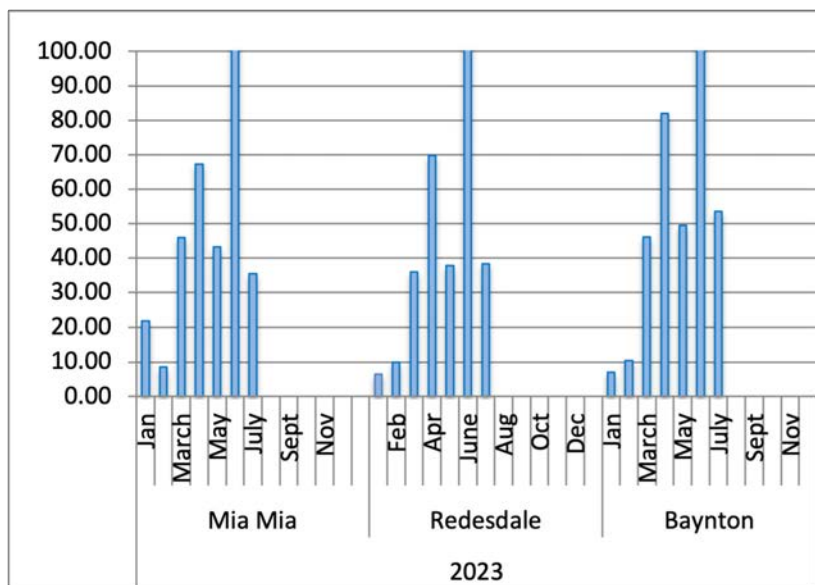
Baynton 53.6mm Year to date 407.60mm

The average yearly rainfall for **Redesdale** is about 601mms.

Thank you to **Helen Bennett** for the
Mia Mia readings & **Belinda Ryan** for
Baynton readings

Year Totals for Previous Years

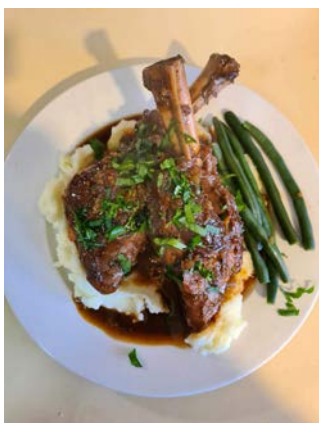
2017	Mia Mia	551.75
	Redesdale	479.60
2018	Mia Mia	455.00
	Redesdale	448.40
2019	Mia Mia	352.00
	Redesdale	315.00
2020	Mia Mia	711.25
	Redesdale	682.85
2021	Mia Mia	593.50
	Redesdale	634.40
2022	Mia Mia	981.50
	Redesdale	894.00
2023	Baynton	707.80
	Redesdale	1122.30



RECIPE OF THE MONTH

Lamb shanks

78



- 4 Lamb Shanks
- 3 tbs olive oil
- 1 onion finely chopped
- 1 garlic clove chopped
- 3 stalks celery finely chopped
- 2 carrots finely chopped
- 2 glasses red wine
- 3 cups chicken stock
- 1 large can chopped tomatoes
- 1 cup chopped parsley
- Fresh thyme
- Salt and pepper

In a large pot sear the lamb shanks till they are brown all over.

Place the shanks in a bowl and Discard the fat.

In the same pot add the oil, onions, garlic, celery and carrots sauté for 3 minutes.

Add the shanks and red wine, cook till liquid has reduced by half.

Add tomatoes, herbs, stock, salt and pepper.

Simmer covered for 3 hours.

Marisa Leahy

Veterinary Surgeon

Mobile: Metcalfe: Malmsbury: Mia Mia



**Small animal
veterinary
work by
appointment**

**Dr Julie Kendall m: 0447 573 247
e: metcalfe.vet@gmail.com**

Knitting & Crochet GROUP



**Get back to
Knitting or
Crochet...**

- Learn new techniques
- Learn to Knit or Crochet
- Possible Knitting and Crocheting for charity

**Every Thursday 1pm - 3pm
at the Redesdale Reserve Pavilion**

If you are interested in joining please contact:
Gloria Pocock: gapocock@bigpond.com or
Regina Bennett: reginabennett@bigpond.com

UNITING CHURCH

Morning Tea is shared 15 minutes before each service at



Sept 10th Sutton Grange 9.30 am
Sept 17th Metcalfe 10 am
Sept 27th Minister Munchies Barfold 10 am

Check the Macedon Ranges Uniting Church Website for extra news

For more information go to

www.macedonrangesunitingchurch.org.au

CATHOLIC CHURCH

Redesdale 2nd Sunday of each month 11am

You are warmly invited to

BARFOLD

COMMUNITY CHURCH

10.00 am each Sunday

followed by morning tea

1691 Kyneton-Heathcote Rd, Barfold

Contact: Russell 0484 700 909



Lisa Chesters MP

FEDERAL MEMBER
FOR BENDIGO

5443 9055
lisachesters.org

Authorised by Lisa Chesters, ALP,
16 Myers St, Bendigo

ADVERTISEMENT




COMMUNITY DEFIBRILLATOR

Located on the side of the Redesdale fire station
Access code is 3444 (Redesdale post code)

The Community owned defibrillator
is now accessible to all
community members.



Free Wi-Fi at Redesdale Pavilion

Proudly brought to you by  CITY OF GREATER
BENDIGO

Community Bank awards rural scholarship to Costerfield's

Emma McTavish

Emma McTavish is Community Bank Heathcote & District's 2023 Rural Scholarship winner. The Costerfield local, who is studying a Bachelor of Veterinary Biology/Bachelor of Veterinary Science at Charles Sturt University in Wagga Wagga has a keen interest in rural veterinary services, with a focus on livestock.

Ms McTavish said "the scholarship will allow me to complete professional placements without worrying about how to pay for travel, accommodation and food at a time when she cannot do paid work." She has previously been lucky that family have been able to support her on these placements when her savings have run out.

Ms McTavish, who is already a qualified Veterinarian with 2 years of industry experience, returned to study with the aim to educate and assist the Heathcote community with all facets of livestock support from in animal husbandry, to general health support in livestock enterprises. She returned to study to focus on livestock veterinary services after realising there was such a large shortage of veterinarians practicing in this field.

MsTavish laughs that "my family keep telling me I should open a vet practice here in Heathcote since the last place closed. I keep telling them not yet! But I've told mum she will be opening and a running a Cat Sanctuary from home when I return."

Branch Manager Teri Johnson said she was always so excited to be able to be a part of these vital scholarships.

"Community Bank Heathcote & District along with Bendigo Bank Nagambie are always thrilled to be able to support our rural customers with ways that we can improve our rural way of life. Our support of Emma with this scholarship will help bring livestock veterinary services to Heathcote. It is through the support of our customers that we are able to offer scholarships like this and much more of

our local communities."

Applications for Community Bank Heathcote & District and Bendigo Bank Nagambie Tertiary Scholarships will open later this year for first time university or TAFE students. Follow Community Bank Heathcote & District on Facebook or Instagram for announcements on opening dates.



Turn your house
into a home
with Tucks
locally made products



Quality

- Aluminium and Timber Windows
- Window Replacements • Security Doors
- Shower Screens • Wardrobe Doors

& Style

We are in your area regularly and offer a **FREE** measure and quote service.

We can offer supply and install prices.



Tucks
Windows
BENDIGO

Celebrating 43 Years
providing top quality
products and
professional
friendly service.

P: 03 5446 8855 E: quotes@tuckswindows.com.au

www.tuckswindows.com.au

SEPTEMBER Kitchen Garden Action



Plant or sow in Spring

Amaranth
Artichokes – plant crowns
Asian Greens e.g. Bok Choy
Asparagus - plant crowns
Basil- PS for the next 2 months
Beetroot
Broad beans – sow direct (SD)
Broccoli – SD or Plant Seedlings (SD)
Cabbage – PS
Capsicum- PS under cover
Carrot
Cauliflower
Celery – PS
Celeriac
Celtuce – SD or PS
Chicory
Chines Cabbage
Chilli
Coriander – SD or PS
Cucumber – PS undercover
Cress
Eggplant – PS undercover
Endive - PS
Fennel
Jerusalem Artichoke
Kohlrabi – SD or PS
Leek -SD

Lettuce – SD
Mediterranean herbs
Melons – PS undercover
Mustards - SD
Onion – SD or PS
Parsley – SD or PS
Parsnips - SD
Peas – SD soak overnight
Potatoes – SD
Pumpkin – PS undercover
Radish – SD
Rocket - SD
Rhubarb - plant crowns
Salsify
Silverbeet -
Snow Peas – SD soak overnight
Spring Onions
Swedes – SD
Turnips – SD

Tomato seeds should have been planted out last month.

Companions for tomato - basil, asparagus, beans, beets, cabbage, chilli, capsicums, eggplant, marigolds, potatoes.

Zucchini: start planting seeds in pellets in seed raising mix for planting out in spring. Sit in a warm spot and keep moist. Feed weekly with half strength fertiliser. Protect from cold/frost. Plant out in November.

Grow your seedlings in a warm protected spot until time to plant them out. Hold off mulching.

Last chance to remove gall wasp from citrus trees and to control peach leaf curl

Feed passionfruit and give a light trim.

Dig green manure crops back into the soil.

Check for aphids on roses and veg.

It is not too late to plant bare rooted ornamentals e.g. Crab apples, roses and lilacs.

Plant a carpet of flowering natives e.g.; paper daisies, yellow buttons, and everlasting daisies

Keep picking Sweet Pea flowers to promote continual blooms.



TRAVELLING

BRIDGE CONNECTION COMPETITION

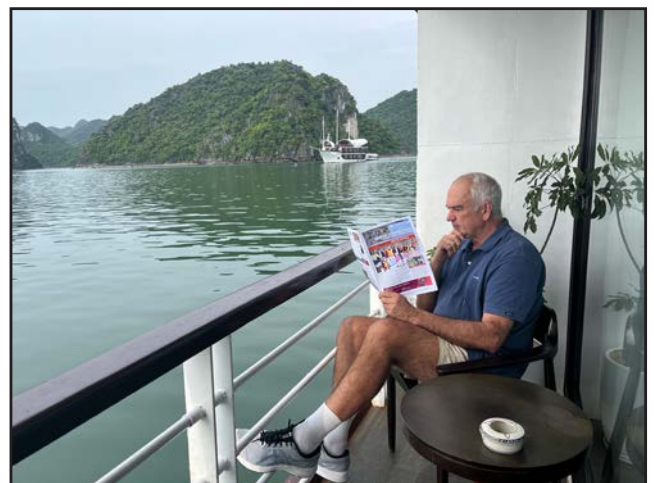
Take your printed copy or Digital Copy of Bridge Connection away with you or an online edition and send us a photo of you or someone else reading the paper.

Send it to us via email to

bridgeconnection.editor@gmail.com

or via text to 0407 116 899

to be in the running for a great prize at the end of the year!



Gary Prentergrast reading Bridge Connection in Halong Bay Vietnam



Gary & Pan Prentergrast reading Bridge Connection in Angkor Wat Cambodia



Help shape the future of Redesdale

Be part of the team that helps develop the facilities, amenities, and the look of Redesdale's future.

A working group is being formed to help develop activities which will interest all age groups within Redesdale. The activities will be used to both introduce various people to each other, as well as to encourage feedback and ideas of their needs and wants. These can be part of Redesdale's next 5 year plan to be submitted to the City of Greater Bendigo.

The working group will consist of 8 people, and will be supported/guided by City of Greater Bendigo. Time commitments will NOT be huge, with possibly one brief meeting a month to develop and implement ideas.

Please contact Lin Newton (info@redesdale.net or 0418 583 304) for further details or to register your interest.

Remember the difference between two communities is the people.....

POEM OF THE MONTH

Spring

By Gerard Manley Hopkins

Nothing is so beautiful as Spring –

When weeds, in wheels, shoot long and lovely and lush;

Thrush's eggs look little low heavens, and thrush

Through the echoing timber does so rinse and wring

The ear, it strikes like lightnings to hear him sing;

The glassy peartree leaves and blooms, they brush

The descending blue; that blue is all in a rush

With richness; the racing lambs too have fair their fling.

What is all this juice and all this joy?

A strain of the earth's sweet being in the beginning

In Eden garden. – Have, get, before it cloy,

Before it cloud, Christ, lord, and sour with sinning,

Innocent mind and Mayday in girl and boy,

Most, O maid's child, thy choice and worthy the winning.



The Revellers

The Revellers recently completed another sell-out season at the Sutton Grange Hall which helped swell the coffers of both the Redesdale and Sutton Grange Hall Committees. The shows were performed in the afternoon which has proved to be a most popular time, allowing the audience to socialise after the performance and enjoy the sumptuous afternoon tea provided by the committees, typical of a true country get-together. It won't be long before the Revellers are putting together a new show for next year - hope to see you then!



Support your **community newspaper** the

'Bridge Connection'

who is supporting **your community**.

Visit: **www.redesdale.net**

district, events, businesses and news.

For more information turn to **page 3**
for advertising rates or call and chat to

Editor - **Regina Bennett 5425 5402.**

'Bridge Connection' Community Newspaper

LOCAL REDESDALE / MIA MIA - CONTACT LIST

<https://www.redesdale.net>

FIRE **REPORT A FIRE 000**

VIC BUSHFIRE INFO LINE
1800 226 226

REDESDALE FIRE BRIGADE

- Captain Mitchell Noonan 0439 769 985
- Secretary Geoff Thomas 0429 143 490
- MIA MIA FIRE BRIGADE
- Captain Calvin Millard 0409 979 037 A/H: 9744 6745
- Mia Mia Fire Brigade Secretary - Steve Cadasch 5425 5548



LOCAL ORGANISATIONS

BRIDGE CONNECTION MAGAZINE

Editors: Regina Bennett 0437 514 223

Bridge Connection President - Gloria Pocock

Bridge Connection Treasurer - Marisa Leahy

Mia Mia Hall Committee - Wendy Hulls 5425 5590

Mia Mia Mec. Inst. Secretary - Wendy Hulls 5425 5590

Mia Mia Mec. Inst. President - Anthony Ryan 5425 5578

Mia Mia Reserve Comm. Secretary - Anthony Ryan 5425 5578

Mia Mia Reserve Comm. Chairperson - Grant Hulls 5425 5590

Otis Foundation 5444 1184

Redesdale and District Assoc. Inc - Lin Newton 0418 583 304

Redesdale Hall Hire - C. Newton 0408 890 060

Redesdale Redesdale Rec. Res. Cttee - Craig Newton 0408 890 060

email: 3444reserve@gmail.com 0408 890 060

Suicide Bereavement Service - 'Standby'
0439 173 310

TOWNSHIP BUSINESSES

Redesdale Hotel - Beth & Garth 03 4405 0601

Redesdale General Store 5425 3154

The House Gallery - Joyce 0408 154 315

COUNCILLORS

City of Greater Bendigo - Eppalock Ward

Matthew Evans 0437 867 028

Marg O'Rourke 0429 061 096

Greg Penna 0429 721 958

POLITICIANS

Federal Member for Bendigo - Lisa Chesters (Labor) 5443 9055

State Member for Euroa - Annabelle Cleeland (Nat) 57621600

SCHOOLS

Redesdale Mia Mia Primary School 5425 3155

Kyneton High School 5421 1100

HEALTH SERVICES

Bendigo Health 5454 6000

Heathcote Health 5431 0900

Kyneton Health 5422 9900

Royal Flying Doctor Community Transport
(Heathcote) 5431 0900

TOURIST INFORMATION CENTRES

Heathcote Visitor Centre 5433 3121

Bendigo Visitor Centre 1800 813 153

Kyneton Visitor Centre 1800 244 711

REGULAR ADVERTISERS

Lisa Chesters 5443 9055

The Optometrist 4411 6802

Palmer Steven & Rennick 5422 6500

Redesdale Hotel 4405 0601

Fertiliser Spreading Service 0412144936

Tucks Windows 0412 144 936

or 0427 546 586

William Farmer Funeral

Directors 5441 5577

ORGANISATIONS

City of Greater Bendigo 5434 6000

Macedon Ranges Shire 5422 0333

Mitchell Shire Council 5734 6200

Mount Alexander Shire 5471 1700

POWERCOR 132 412

SPONSORS *Without their support our community would not thrive - Thank you!*

blue pencil publishing 0429 911 980

8th ON-PROPERTY RAM SALE

Wednesday
27th September 2023
Inspection: 10.30am
Helmsman Sale 12.30pm
ALAN HARRIS
0417 058 780



Grand Champion Fine Merino Ram Bendigo 2022

50 MERINO & POLL MERINO RAMS

36 WHITE SUFFOLK RAMS



SELLING AGENTS

28 PARFREY ROAD, COSTERFIELD

Chris Anderson 0408 921 540

3% REBATE
OUTSIDE AGENTS

Palmer Stevens & Rennick Barristers & Solicitors

Founded 1852

Palmer Stevens & Rennick

provide advice to clients all over Australia.

- Powers of Attorney
- Wills and Estates
- Criminal Law
- Conveyancing
- Property Law
- Family Law
- Agribusiness Law
- Commercial Litigation
- Traffic Law and Toll Fines
- Appearing in all Courts
- Pre purchase advice for large Agribusiness Assets
- Compensation for Government Acquisitions



Mr Joseph Palmer
Founder of
Palmer Stevens & Rennick

8 Jennings Street, Kyneton
or P.O. Box 1, Kyneton Vic 3444
Phone: (03) 5422 6500 Fax: (03) 5422 3385
Email: psr@psr.net.au

A good life
deserves the
best farewell

**WILLIAM
FARMER**
FUNERAL DIRECTORS

Andrew and Heather Hampton

151 McCrae Street Bendigo
12 Victoria Street Eaglehawk

P: 5441 5577

www.williamfarmer.com.au

A tradition that continues...