



ISSUE NO: 143 November 2023

For the Mia Mia- Redesdale Region including:

- Heathcote • Derrinal • Glenhope • Baynton • Sidonia • Barfold
- Langley V Sutton Grange • Elphinstone • Kyneton • Metcalfe

BRIDGE CONNECTION COMMUNITY NEWSPAPER



<https://www.facebook.com/groups/897527781461431/>

Jane Rusden

.... teaching Redesdale artists watercolour techniques.



Left to right: David Waters, Gloria Pocock, Jane Rusden, Jen Lawrie- Smith, Penny Paterson, Helen Kennedy, Peg Higginbottom, Ruth Booker (absent Kym DeLany). Cole looking adoringly at David.

The enjoyment of painting has helped this group improve their talents and the smiles say it all.

Thankyou Jane

Second Jane Rusden Watercolour Course

Sadly we have come to the end of the second Jane Rusden watercolour course held in the Redesdale Pavilion. We have been so lucky to have had a professional watercolourist of Jane's calibre to teach us.

Everyone loved the courses and it is probable that we will be embarking on creating a 'plein air' regular group between Redesdale and Castlemaine. If anyone is interested, please contact **Kathy** on **0407 116 899**.

Notification to landholders:

Exploration in Mount Lofty Bushland Reserve

Fosterville Gold Mine (FGM) will be undertaking exploration activities in the Mount Lofty Bushland Reserve, located within exploration licence EL006503 during October and November 2023.

All programs are reconnaissance exploration activities aimed at identifying structures prospective to host gold mineralisation. During the program, you may see FGM geologists wearing hi-vis uniforms undertaking the activities described below.

Soil sampling

Soil sampling is a basic technique of mineral exploration used to identify gold indicator anomalies in the soil. This information is used to inform areas for further exploration. Soil sampling involves a small hole (40x40cm) hand-dug to a depth of 10-20cm. Samples are typically taken 50m apart along a sample line, which is generally orientated in an east-west direction and spaced 100m to 200m apart. Sampling is undertaken using hand tools by 1-2 people on foot. Soil sampling locations are backfilled and vegetation is replaced immediately.

Geological mapping

Geological mapping involves two to three people observing rock outcrops. The aim of the activity is to identify significant geological structures which may indicate gold mineralisation on the property or in the region. During the activity, geologists may take small rock samples for chemical analysis.



Scan the QR code for more details about soil sampling.



Do you need to know more?

Please contact the Fosterville Gold Mine Community Team by via phone or email.
Tel: 03 5439 9000 Email: fgm.community@agnicoeagle.com

Editorial

Dear Readers important things first! There's a **free BBQ** on December 3 at 5pm (see page 16)

It's always a busy time of year but there seems to be more than ever planned for our area in the next few months.

Fortunately for all of us, there are new initiatives to improve our financial and farm security

Thanks to Lisa Campbell for the investment Scam information on **page 5**.

Ag Cloud (see page 7) has received a major grant to help farmers improve their connectivity and security.

Looking forward to seeing you at the information session on Feb 29th (see page 8)

Also the community is being asked to tell us about their connectivity problems (see page 17)



Regina Bennett

and (page 19) Anabelle Cleeland roads message.

Editor: Regina Bennett

Ph: 0437514223

e: bridgeconnection.editor@gmail.com



The newly erected post box at the hall will serve as a drop box for any articles or letters you would like to post for possible inclusion. text or call **0437 514 223** or email

bridgeconnection.editor@gmail.com

If you leave anything for us to collect

Bridge Connection

- Mission Statement -

The mission of **Bridge Connection** is to bring people together by:

1. Providing information about local issues, goals and events, and to celebrate local achievements,
2. Encouraging economic growth in the area
3. Fostering geographic identity, and
4. Providing a platform for public debate

Bridge Connection is published by local people who volunteer, for local people as a **free paper** and on line at **redesdale.net** and via **face-book**



<http://www.facebook.com/groups/897527781461431/>

BRIDGE CONNECTION COMMUNITY NEWSPAPER

Advertising Rates/Sizes

Size	Height x Width	Price per issue	10 Editions
Business Card	55mm x 90mm	\$25	\$250
Quarter Page	130mm x 90mm	\$50	\$500
Half Page	130mm x 190mm	\$95	\$950
Full Page	270mm x 190mm	\$175	\$1,750

Colour Advertisements plus 20%.

**Please Note:
COPY DEADLINES
17th OF EACH MONTH**

Please send editorial or advertising copy to:

bridgeconnection.editor@gmail.com

or by post to **Regina Bennett 3465 Burke & Wills track Mia Mia 3444.**

For other editorial enquiries, please phone **0437 514 223**

Bridge Connection Distribution

950 Copies printed and distributed to Redesdale Mia Mia Region, including Barfold, Baynton, Derrinal, Elphinstone, Glenhope, Kyneton, Langley, Metcalf, Sidonia and Sutton Grange

Disclaimer: The Bridge Connection Inc. Committee wishes to advise that the views or remarks expressed in this publication are not necessarily the views of the volunteer Bridge Connection Inc. editorial or production team and no service or endorsement is implied by the listing of Advertisers, sponsors or contributors. Although every effort is taken in reproducing and printing advertisements correctly, we take no responsibility for errors.


Management Committee

President : Gloria Pocock


Secretary: Regina Bennett (03) 5425 5402
bridgeconnection.secretary@gmail.com

Treasurer: Marisa Leahy 0415 384 217

Magazine: Regina Bennett - Editor 0437 514 223



LITTLE FREE LIBRARY



Please 'donate' by simply adding Books, Magazines and DVD's to the cabinet... *Thank you*

Located behind the
Community Notice Board
Inside the Redesdale Recreation Reserve
Redesdale Recreation Reserve,
2631 Kyneton - Redesdale Road
Redesdale Vic 3444



With the hotter weather closing in on us at a rapid rate, it is noticeable how many people are rushing to get that last minute burn-off done. We have been called out twice in successive days to fires that could have been easily avoided.

One was a simple burn-off that was causing no harm but because it was not registered and someone reported it, we had to turn out.

The other was a burn that because of the conditions became out of control and four appliances were needed to put it out.

These could have been avoided if the landowners had followed a simple CFA burn-off check list:

Always register your burn-off

Call 1800 668 511 or

Email burnoffs@esta.vic.gov.au

- Never leave it unattended
- Monitor weather conditions
- Have sufficient equipment and water to stop the fire spreading
- Be aware of fire restrictions in your area (also know what fire region you are in)

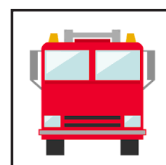
The preferred method of registration is by email. Once you have given your details it is a simple matter of just putting in a new time and date for any future burns.

As a side note, the CFA are speculating that fire restrictions may come in sometime in mid November. This is very dependent on weather conditions and varies depending on what shire you're in.

In the meantime keep doing the right thing.

Regards Andrew Campbell

Community Safety Officer



Insure our way, the local way



Our team at Elders insurance Kyneton can look after all your insurance needs and is totally worthy of your trust. Because unlike other insurance providers we actually live and work in your community and take the time to come to you and understand your situation. We can even approve some claims on the spot.

Contact **Melanie Duggan**
for a personalised quote today
03 5423 3007



eldersinsurancekyneton@elders.com.au
83 Edgecombe Road , Kyneton
Q **Elders Insurance Kyneton**

Falconer Holdings Pty Ltd atf RJ & SA Falconer Family Trust ABN 27733987494 trading as Elders Insurance Kyneton AR No. 285618 is an Authorised Representative of Elders Insurance (Underwriting Agency) Pty Limited (ABN 56 138 879 026, AFSL 340965) (EUA). EUA, acting under its own AFSL, is authorised to distribute Elders Insurance products on behalf of OBE Insurance (Australia) Limited (ABN 78 003 191 035, AFSL 239545), the product issuer. Visit www.eldersinsurance.com.au to consider the Product Disclosure Statement and any applicable Target Market Determination to decide if the product is right for you.



INVESTMENT SCAMS

WOULD YOU RECOGNISE THE SIGNS OF AN INVESTMENT SCAM?

You're sitting at home, and you get a phone call from an unknown number. You take the call and have a nice chat while you're having a cuppa. The caller seems friendly, and then they offer you the opportunity of a lifetime. If you act now, you can invest and earn incredible returns with little to no effort from you. Sound too good to be true? It probably is.

ACCC's SCAMWATCH says Australians lose more money to Investment scams than any other type of scam. That's because these scams can be difficult to identify - by the time you discover it's a scam, it may be too late.

Don't lose your life savings to a money-making opportunity that's too good to be true.

Scammers use convincing marketing and new technology to make their investment sound too good to miss. They promise you big payouts with little or no risk. They often use pressure tactics to get you to act fast, so they can steal your money.

WHAT ARE THE WARNING SIGNS IT MIGHT BE A SCAM?

- Fake news stories or ads that claim a celebrity recommends this scheme to make big money.
- An online contact (a friend or romantic interest) that you've never met in person starts talking to you about investing.
- Emails, websites or ads with testimonials and over-the-top promises of big returns.
- High pressure tactics designed to rush you to act so you don't 'miss out'.
- The 'adviser' who is helping you claims they don't need an Australian financial services (AFS) license.
- You are asked to promote the scheme to friends and family to earn commission.

WHAT STEPS CAN YOU TAKE TO PROTECT YOURSELF?

Always stop, think, and check before you act. These scams will often pressure you to act quickly. Don't let them rush you into a bad decision.

Get independent legal advice, or financial advice from a financial advisor who is registered with ASIC.

Do your due diligence to make sure you know who you are dealing with. Make sure the company or website is not named on the International Organization of Securities Commission's (IOSCCO) investor alerts.

OTHER THINGS TO CHECK

The person you're dealing with works for the organisation they say they do, using contact details you found yourself.

The person trying to sell you a financial or investment product, or who is giving you financial advice, has an Australian financial services (AFS) license.

The company's share listing on the stock exchange. If the offer to buy shares is well below the market value shown - it's a scam. If you are told the shares are being released pre-initial public offering (IPO), be even more cautious.

When the domain name was registered - A new website for an existing company is a red flag.

I got this information from SCAMWATCH. It's available to everyone.

You can also visit the Moneysmart website for more information on investment scams.

Next edition - Let's talk about Threats and Extortion scams.

Lisa Campbell

Redesdale and District Association

AGM Report

Held on October 14th 2023

Outgoing President Speech from Pan Prendergast

"As the current President, I would like to review our achievements since our last AGM and our future proposed events.

November

During the State election, RaDA, CFA, RRRC and the Hall Committee held a sausage sizzle for the purpose of raising money for a new battery and replacement pads for the community defib machine. This event raised \$245.34. RaDA currently holds \$ 222.94 in the Defib account for on-going maintenance.

April

Redesdale Clean Up was organised by RaDA with support offered by committee members and a few local residents. We hope this will continue to be an annual event with growing interest shown by the community to keep our town clean.

June

Redesdale's Biggest Morning Tea was held in the Redesdale Community Hall and hosted by RRRC along with support from RaDA. Our initial target goal of \$500.00 was well and truly surpassed with \$2,400.00 raised for the Cancer Council of Australia. I think everyone will agree this morning tea was a great success for a worthy cause and plans are already in place to continue raising awareness and funding next year.

August

"Cleeland Cuppa" was held at the Redesdale Community Hall inviting residents to meet our federal member Euroa – Annabelle Cleeland. Residents were able to have one on one chats with Annabelle and also receive assistance with obtaining power rebates. RaDA and Annabelle Cleeland will continue their close working relationship.

September

Listening Post morning tea with Eppalock Ward Councillors – Margaret O'Rourke and Greg Penna was held in the Redesdale Community Hall. A few local residents attended this morning tea and RaDA appreciates the Bendigo Councillor's on-going support.

Future Plans

"Welcome to summer" sausage sizzle has been proposed for early December. RaDA is current applying for sponsorship from Heathcote Bendigo Bank to allow this to be a free event for all Redesdale residents. The purpose of this event is to allow everyone enjoy a social gathering."

Incoming New President from Kathy Hall

"Thank you all for putting your confidence in me to chair this dynamic committee. We have some big tasks ahead of us and I know we will tackle

them with EEEEs and by this I mean the four Es: eagerness, energy, enthusiasm and enterprise - but not forgetting CIC: communication, inclusion and consultation. I am really looking forward to working in a team again, especially this team! They are big shoes to fill, so I want to say a big thank you to Pan for her great leadership over the last, very challenging, few years."

Financial Statement

June 30 2023:

Total income: \$17,087.00 Total Expenses: \$17,066.00 Net Assets: \$17,386. Full details available on request.

The RaDA Committee Members voted at the AGM – Redesdale Community Hall - October 14, 2023 are as follows:-

President	Kathy Hall
Vice-President	Pan
Treasurer	Frederika
Laurie	
Secretary	Lin Newton
Bridge Connection Representative	Regina Bennett
CFA Representative	Craig Newton
Landcare Representative	Barbara James
RRRC Representative	Craig Newton
Stone Reserve Representative	Kathy Hall
Ordinary Committee Members:	Jo Sargent Smith
Kym De Lany & Robyn Abramowski	

Redesdale and District Association

It's been 10 years!

I am very honoured to have been voted in as Chair of RADA for the coming year and am excited about the plans we have. Please see the report above regarding the AGM held on October 14th. There are big shoes to fill, this position having been filled by Jo Smith-Sargent, Gloria Pocock, and Pan Prendergast and thank goodness two are still on the committee. And also, thank goodness the incredibly efficient Lin Newton is continuing her role as secretary.

It is 10 years since the Redesdale and District Association became an incorporated organisation although there was a year of planning before that. It's been ten years of significant achievements. We are always looking for new members to become involved. We hope as many people as possible will come to the sausage sizzle on December 3rd. It will be a great opportunity to meet people in the local community. You don't have to be a member. Just rock up! Please see the poster (on page ...).

Kathy Hall

As a supplier of the of the On Farm Connectivity Program, we are pleased to announce the scheme is open for applications.

We support farmers improve on farm security and connectivity

Rebates of up to \$30,000



www.agcloud.com.au

or contact us to find out more

PH: 03 4418 2222

<https://business.gov.au/grants-and-programs/on-farm-connectivity-program>

- extend digital connectivity and enable Primary Producers to take advantage of advanced farming technology
- enhance a Primary Producer's ability to implement digital agribusiness solutions through improved connectivity
- capitalise on the agricultural sector's productivity and growth
- support access to new communications equipment and services by offsetting some of the cost.

Protect your **farm** and your **online** presence!

Save the Date!

Grant Sutton from AgCloud is coming to talk to the Redesdale and District Community on

Thursday February 29th 2024

at the Redesdale Hall

In recent times, cybercriminals have identified a new demographic to target – the farming community. It's important to understand that you're not facing this challenge in isolation. Builders, real estate agents, tradies, and businesses with a high turnover are equally susceptible to the trouble these cyberthreats bring.

Many farmers face difficulties due to limited technology resources and expertise, which can make it difficult to address these potential risks effectively.

AgCloud is a local business set up to instigate meaningful change within this domain to raise awareness, provide comprehensive education, and valuable resources aimed at genuinely reducing the risks associated with falling victim to cyberattacks.

Some Key Discussion points will be.

- Do you have all the deterrents you should?
 - CCTV surveillance signage.
 - No trespassing or Bio-security signage.
 - Good locks on gates.
 - Visible cameras around the farm property.
 - Sensors for detecting vehicle entry or opening gates.
 - Smart lighting to provide a strong deterrence upon arrival.
- Do you have digital deterrents for your online presence, such as
 - Fit for purpose email host (Like the strength of the gate, protects the entire property)
 - Suitable domain name (The name that is displayed on the gate)
 - Secure password (The lock that protects the gate)
 - Strong Multi-Factor-Authentication (Notifying you if there is an attempt to open the gate & like having a more difficult lock)
 - Can you keep your security updated (Like performing regular maintenance on the gate)

To get some help before the presentation:

Online resources for farm crime: <https://www.crimestoppersvic.com.au/current-focus/farm-crime/>

Online resources for cybercrime: <https://www.scamwatch.gov.au/>

If you are concerned about your farm security in both the physical & the digital, you can give AgCloud a call on **Mobile**: 0417560231 or **email** us on info@agcloud.co

Heathcote Show 2023

Tuesday 7 Nov
Melbourne Cup Day



All the fun of a traditional country show

* working dogs * horse show * sideshow alley
* art & craft * rides * photography ... and lots more!

Specially for kids, at no extra cost!

- * Farmer Darryl
- * Whitey's ferrets
- * Professor Wallace
- * Face painting
- * Wildlife meet and greet
- * Kid's gardening
- * Eljay's Junk Yard Action Show

Adults \$12
For 2023 only: free entry
for ages 16 and under
eftpos at gate

Showground gates open: public 9 am, competitors from 6 am
www.heathcoteshow.wordpress.com

Find us on 



 Bendigo Bank

Community Bank
Heathcote & District



Mia Mia Cricket Club Season Draw

Round 2

Saturday, 04
November 2023

MMCC
V
Mandurang Division 3

One Day

01:00 PM,

Mia Mia Recreation Reserve / Mia
Mia Recreation Reserve

Round 9

Saturday, 20
January 2024

MMCC
V
Bagshot

One Day

01:00 PM

Mia Mia Recreation Reserve
Mia Mia Recreation Reserve

Round 3

Saturday, 11th
November 2023

Axe Creek Division 3
V

One Day

01:00 PM,

Catholic College Bendigo
(Marist Mercy) / Catholic College
Bendigo #1

Round 10

Saturday, 03

February 2024

MMCC
V

One Day

01:00 PM

Mia Mia Recreation Reserve
Mia Mia Recreation Reserve

Round 4

Saturday, 18th
November 2023

Bagshot
V
MMCC

One Day

01:00 PM,

Bagshot Reserve / Bagshot
Recreation Reserve

Round 11

Saturday, 10 February
2024

Sedgwick Div 3
V
MMCC

One Day

01:00 PM

Catholic College Bendigo (Marist
Mercy) / Catholic College Bendigo
#1

Round 5

Saturday, 23rd
November 2023

West Bendigo Division 3
V
MMCC

One Day

01:00 PM

Finn Street Recreation Reserve /
Finn Street Recreation Reserve

Round 12

Saturday, 17
February 2024

MMCC
V
Mandurang
Division 3

One Day

01:00 PM

Mia Mia Recreation Reserve
Mia Mia Recreation Reserve

Round 6

Saturday, 02nd
December 2023

MMCC
V
Sedgwick Div 3

One Day

01:00 PM,

Mia Mia Recreation Reserve / Mia
Mia Recreation Reserve

Round 13

Saturday, 24
February 2024

MMCC
V
Axe Creek DIV 3

One Day

01:00 PM

Mia Mia Recreation Reserve
Mia Mia Recreation Reserve

Round 7

Saturday, 09
December 2023

Mandurang Division 3
V
MMCC

One Day

01:00 PM,

St. Francis of the Fields / St. Francis
of the Fields

Round 14

Saturday, 02
March 2024

MMCC
V
Bagshot

One Day

01:00 PM

Mia Mia Recreation Reserve
Mia Mia Recreation Reserve

Round 8

Saturday, 16
December 2023

MMCC
V
Axe Creek DIV 3

One Day

01:00 PM,

Mia Mia Recreation Reserve /
Mia Mia Recreation Reserve

Round 15

Saturday, 02
March 2024

West Bendigo Division 3
V
MMCC

One Day

01:00 PM

Finn Street Recreation Reserve /
Finn Street Recreation Reserve

PLAYERS WANTED

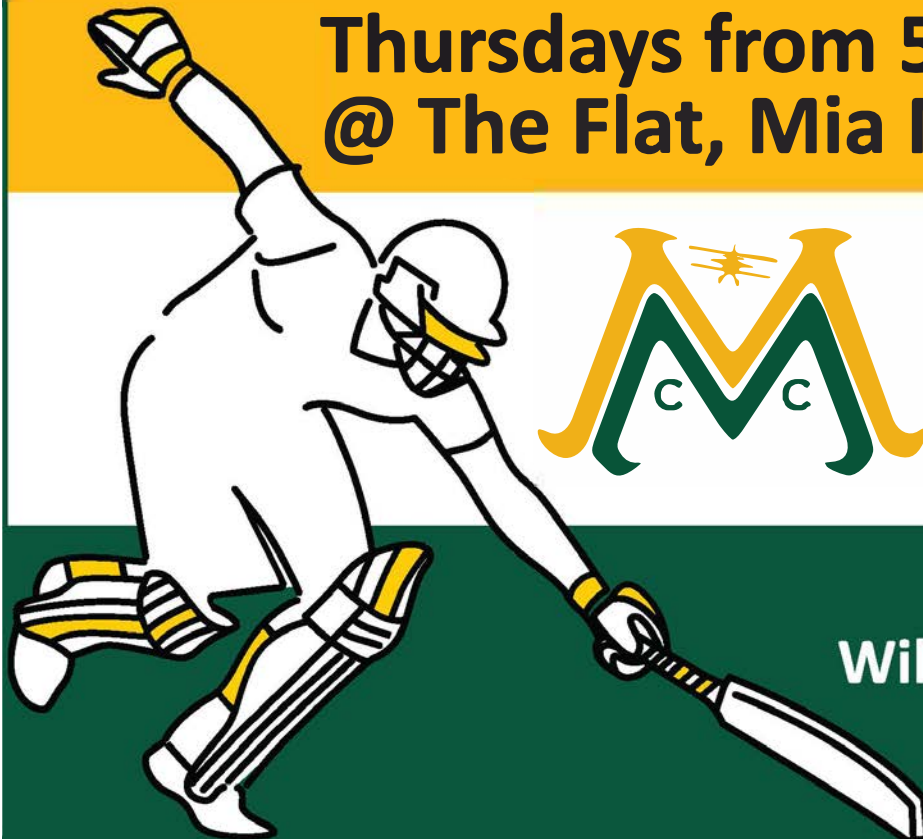


MIA MIA CRICKET CLUB

EVCA Saturday Competition from 1pm

**Season commences Saturday
28th October 2023**

TRAINING
Thursdays from 5.30
@ The Flat, Mia Mia.



ALL WELCOME
No prior
experience or
gear needed.

Contact
Will | 0411 834 175
or visit FB page.



Redesdale & Surrounds Comming Events

NOVEMBER

Ballan	Local Farmers and Makers Market. 2nd Saturday of every month.	9.00 - 1.00pm
Castlemaine.	Local Farmers Market. 1st Sunday of every month.	9.00 - 1.00pm
CFM.	Weekly Market, Wednesday.	2.30 - 5.30pm
Clunes.	Local Farmers Market 2nd Sunday each month.	8.30 - 1.00pm
Creswick.	Local Farmers Market 3rd Saturday every month.	9.00 - 1.00pm
Daylesford.	Local Market. Every Sunday.	8.00 - 3.00pm
Gisborne.	Olde Time Market. 1st Sunday every month.	9.00. - 2.00pm
Kyneton.	Local Farmers Market. 2nd Saturday every month.	8.30 - 1.00pm
Lancefield.	Local Farmers Market. 4th Saturday every month.	9.00 - 1.00pm
Maldon.	Local Farmers Market. 2nd Sunday every month.	
Malmsbury.	Local Farmers Market. 3rd Sunday every month.	9.00 - 1.00pm
Talbot.	Local Farmers Market. 3rd Sunday every month.	9.00 - 1.00pm
Trentham.	Local Farmers Market. 3rd Saturday every month.	9.00 - 1.00pm
Woodend.	Local Farmers Market 1st Saturday every month.	9.00 - 1.00 pm

Tue 7th Melbourne Cup

Heathcote Show

Wed 8th Kyneton Cup

Fri: 17th & Saturday 18th Kyneton Show

Fri: 18th & 19th Budburst Festival Macedon Ranges

Sun: 18th –Malmsbury Village fayre

DECEMBER

Sun: 24th Christmas Eve

Mon: 25th Christmas Day

Tues: 26th Boxing Day

for more information - redesdale.net

- <https://www.heathcote.org.au-kyneton.org.au>
- <https://www.bendigoregion.com.au>
- <https://www.bendigoregion.com.au/visit-castlemaine-maldon>
- <https://www.bendigoregion.com.au/visit-maryborough-surrounds-victoria>
- <https://www.bendigoregion.com.au/visit-loddon-valley>

REDESDALE COMMUNITY HALL & PAVILION

AVAILABLE FOR HIRE

Redesdale gives you a choice of venues for your next party, meeting or event:

Redesdale Hall: 160 sqm floor space with stage and expansive catering kitchen, as well as on-site restrooms.

Redesdale Pavilion: 108 sqm floor space with panoramic windows overlooking the Redesdale Reserve Oval.

Either of these wonderful facilities are available for community events (1) or public use (2).

- (1) Community - Use of facility targeting community benefit.
Entrance/participation fees are not charged by organiser.
- (2) Retail - Use of facility for private or business use.
Entrance/participation fees may be charged by organiser.

Equipment Rental Check out the extensive furniture & equipment below to help you hold your event at home

Item:	Available	Item:	Available
Commercial sized steel roaster	1	4 burner BBQ	1
Marquee (Large), 6m x 12m	1	Table cloths, white	10
Marquee (Small), 3m x 3m	1	Chairs, green steel	80
Tables, plastic, 1.8m x 1m	10	Chairs, white plastic	80
Tables, wood, 1.8m x 1m	20	Umbrellas, charcoal	10

For all inspections and enquiries contact Redesdale Recreational Reserve Committee:

E: 3444reserve@gmail.com

M: 0408 890 060



THE REDESDALE HOTEL

Central Victoria's Favorite Country Pub

For bookings please call (03) 4405 0601

Wednesday & Thursday 12pm – 9pm Lunch & Dinner

Friday – Sunday 12pm – Late Lunch & Dinner

PUBLIC HOLIDAYS – Phone for details

Kitchen closes at 8pm everyday

The Redesdale Hotel

2640 Heathcote - Kyneton Road

Redesdale Vic 3444

info@theredesdalehotel.com.au



The Redesdale Hotel

[redesdalehotel](https://www.redesdalehotel.com.au)



www.theredesdalehotel.com.au

creative designs for your business

Proudly Sponsoring
assistance to the **'Bridge Connection'**

logos menus flyers posters
invitations brochures magazines
business cards advertisements
letterheads with compliment slips
full business imaging

lyn ingles | graphic designer
blupen@bigpond.com
0429 911 980

CV SHEDS
Est. 1975

Quality supplier and installer of:

- Farm Sheds - Work Shops
- Hay Sheds - Garages/Barns
- Quality RHS Frames
- All Australian Steel
- Shed Materials - purlins/
sheeting also available

*Been Building sheds in Central
Victoria for over 40 years*

Come and visit us at 12 Bourke St Kyneton
Mon- Fri 8 am to 4.30 pm, other times by appointment
03 5422 6644 or info@cvsheds.com.au www.cvsheds.com.au



Redesdale 4.4mm Year to date 341.60mm

Mia Mia 14mm Year to date 396.40mm

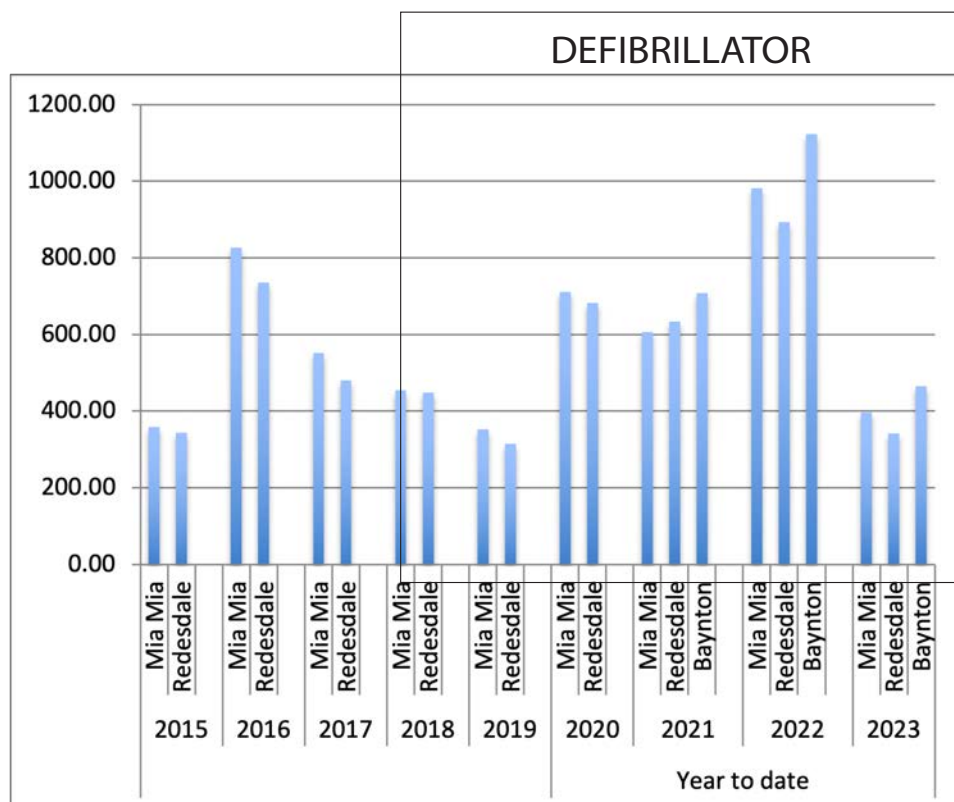
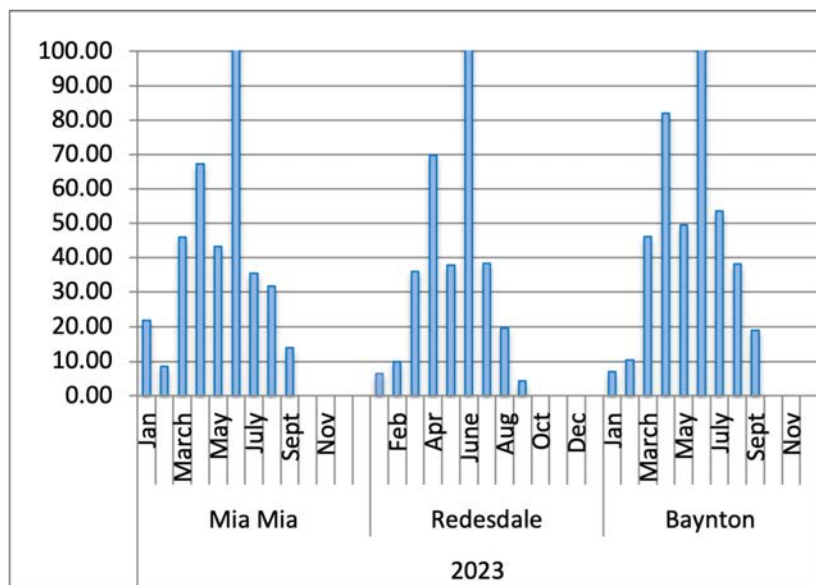
Baynton 19mm Year to date 464.80mm

The average yearly rainfall for **Redesdale** is about 601mms.

Thank you to **Helen Bennett** for the
Mia Mia readings & **Belinda Ryan** for
Baynton readings

Year Totals for Previous Years

2017	Mia Mia	551.75
	Redesdale	479.60
2018	Mia Mia	455.00
	Redesdale	448.40
2019	Mia Mia	352.00
	Redesdale	315.00
2020	Mia Mia	711.25
	Redesdale	682.85
2021	Mia Mia	593.50
	Redesdale	634.40
2022	Mia Mia	981.50
	Redesdale	894.00



RECIPE OF THE MONTH

Pannacotta With Poached Fruit 79



600ml thickened cream

1 tablespoon of vanilla bean extract

(Or use your favourite liquor)

80g sugar

1 tablespoon of gelatine

3 tablespoons cold water

Place cream and sugar in a medium saucepan on low heat stirring till the sugar dissolves.

When it has reached near boiling point remove the pan from the heat and add the vanilla.

In a small bowl add the cold water and sprinkle in the gelatine. Place this in the microwave for 20 seconds on high, remove and stir to dissolve any lumps.

Pour the gelatine mixture into the cream and stir to incorporate.

Divide mixture into moulds or glasses and refrigerate for min 5 hours or overnight.

Serve with any poached or fresh fruit of your choice.

Marisa Leahy



evolution pools

Concrete &
Fibreglass Pools

Pool Shop &
Service Department

127 Strickland Rd,
East Bendigo

www.evolutionpools.com.au

Turn your house
into a home
with Tucks
locally made products



- Aluminium and Timber Windows
- Window Replacements • Security Doors
- Shower Screens • Wardrobe Doors

We are in your area regularly
and offer a **FREE** measure
and quote service.

We can offer supply and install prices.



**Tucks
Windows
BENDIGO**

Celebrating 43 Years
providing top quality
products and
professional
friendly service.

P: 03 5446 8855

E: quotes@tuckswindows.com.au

www.tuckswindows.com.au

UNITING CHURCH

Morning Tea is shared 15minutes before each service



Nov 12th Metcalfe CFA service Metcalfe Hall

Nov 22nd Minister Munchies 10 am

Nov 26th Sutton Grange 9.30 am

Nov 12th Metcalfe CFA service Metcalfe Hall

Nov 22nd Minister Munchies 10 am

Nov 26th Sutton Grange 9.30 am

For more information go to

www.macedonrangesunitingchurch.org.au

CATHOLIC CHURCH

Redesdale 2nd Sunday of each month 11am

You are warmly invited to

BARFOLD

COMMUNITY CHURCH

10.00 am each Sunday

followed by morning tea

1691 Kyneton-Heathcote Rd, Barfold

Contact: Russell 0484 700 909



Lisa Chesters MP

FEDERAL MEMBER
FOR BENDIGO

5443 9055

lisachesters.org

Authorised by Lisa Chesters, ALP,
16 Myers St, Bendigo

ADVERTISEMENT



COMMUNITY DEFIBRILLATOR

Located on the side of the Redesdale fire station
Access code is 3444 (Redesdale post code)

The Community owned defibrillator
is now accessible to all
community members.

Summer Community Get-together

Sunday Afternoon

BBQ

03
December
5pm

FREE
FOOD



BYO Drinks & chairs - Everyone Welcome

The Pavillion at Agnes Mudford Reserve, Redesdale
Time to catch up with your neighbours and meet some new people.

OCTOBER Kitchen Garden Action



Plant or sow in Spring

Amaranth

Artichokes – plant seedlings (PS)

Asian Greens e.g. Bok Choy

Asparagus - plant crowns

Basil- PS for the next month

Beans – PS Bush and Runner

Beetroot - SD

Broad beans – sow direct (SD)

Broccoli – SD or (PS)

Brussels Sprouts - ST

Cabbage – PS

Capsicum- PS under cover

Carrot - SD

Cauliflower – seedling tray (ST)

Celery – ST

Celeriac – ST

Celtuce – SD or PS

Chicory

Chines Cabbage -PS

Chilli – ST

Chives - SD

Coriander – SD or PS

Cucumber – PS undercover

Cress – PS

Dill - SD

Eggplant – PS

Endive - PS

Fennel - SD

Jerusalem Artichoke

Kohlrabi – SD or PS

Leek -SD

Lettuce – SD

Mediterranean herbs

Melons – PS

Mustards - SD

Onion – SD or PS

Parsley – SD or PS

Parsnips - SD

Peas – SD soak overnight

Potatoes – SD

Pumpkin – SD

Radish – SD

Rocket - PS

Salsify

Silverbeet - SD

Snow Peas – SD soak overnight

PS - Plant Seedling

SD - Sow Direct

ST - Seedling Tray

Phone signal problems?

Internet dropping out?



Please let us know your stories.

The district association is collecting examples of the frustrations our local community continues to have with connectivity.

Next year, we will be putting in a concerted effort to bring this to the attention of all levels of government. Please send your stories to info@redesdale.net or post them into the

Bridge Connection mailbox at the Redesdale hall.

TRAVELLING

BRIDGE CONNECTION COMPETITION

Take your printed copy or Digital Copy of Bridge Connection away with you or an onlie edition and send us a photo of you or someone else reading the paper.

Send it to us via email to

bridgeconnection.editor@gmail.com

or via text to 0437 514223
to be in the running for a great prize at the
end of the year!



It's 0 degrees, but feels like -4, on this beautiful sunny day. Alta is 375 km north of the Arctic Circle and as far north as we're going.



We visited a Sami (indigenous people) reindeer farm in Sortland, Norway, and George made time to read the Bridge Connection to one of the reindeer photo above Right . Very interesting culture, btw.



Here are a couple of photos from a farm in Bergen Norway.

George is sharing BC with one of the 11 Norwegian spael sheep on the farm, and Sharon is sharing with the Norwegian dole horse.

Half of this 140-acre farm consists of a very steep, dense mountain, and there is virtually no 'flat' land. Farms are small and heavily subsidised so as to keep them

going, and stock numbers are controlled. For example, this farm is only allowed to have 11 sheep! The nearby dairy farm can only have 14 cows! Often one farmer looks after several farms as owners go away to work. On our visit, besides these sheep and the Norwegian dole horses, we also met a Norwegian fjord horses and Icelandic horses, as this farm offers educational visit and/or horse-riding lessons, school visits, and so forth.





Local Member reaches out to Redesdale community

Nationals Member for Euroa Annabelle Cleeland is reaching out to the Redesdale community, calling on their help to bring attention to ongoing road maintenance and telecommunications issues in the region.

Ms Cleeland was in Redesdale for a “Cleeland Cuppa” at the start of August, helping members of the community complete their \$250 Power Saving Bonus.

“One of the big issues brought up was improving the quality and reliability of telecommunications in the area,” Ms Cleeland said.

“I have been meeting with Telstra as we work through some of the telecommunications challenges ahead of the bushfire season.

“We must ensure that the community remains safe and is able to reliably contact friends, family, and emergency services if necessary.

“As these conversations continue, I would love to hear more from you about your local experiences with phone and internet connection as I work to resolve this.”

Ms Cleeland said issues with the quality of the roads, and the dwindling road maintenance budget, were also one of the community’s biggest concerns.

“I want to bring attention to some of our region’s worst roads,” Ms Cleeland said.

“Sadly, road maintenance and the road resurfacing budget have all but been abandoned under this Labor Government.

If you are aware of roads that are unsafe, filled with serious potholes, or just poorly maintained, please get in contact with me so that I can raise this issue in Parliament.

Ms Cleeland can be contacted at (03) 5762 1600 or by emailing

Annabelle.cleeland@parliament.vic.gov.au.

Letter to the Editor

PLEASE NOTE:

Views expressed in this newsletter are not necessarily the views of the publisher of The Bridge Connection.

12 October 2023

City of Greater Bendigo
Waste Collection Services
requests@bendigo.vic.gov.au

CC: Mayor
Local reps:

Frederika W. Laurie
Gibbards Crossing
46 Gibbards Lane
Redesdale 3444

a.metcalf@bendigo.vic.gov.au
g.penna@bendigo.vic.gov.au
m.orourke@bendigo.vic.gov.au

To whom it may concern

CoGB Organics collection from Rural Properties

As a member of our local agricultural community, I am writing to share my thoughts on waste management practices, specifically in relation to our farm – Gibbards Crossing.

At Gibbards Crossing we take great pride in our commitment to sustainability and environmental stewardship. As part of our ongoing efforts to reduce waste and promote a circular economy, we have implemented a comprehensive composting and mulching system.

Currently, we operate three “hot” compost bins, carefully managed to facilitate the rapid decomposition of organic matter. These bins are specifically designated for materials that generate higher temperatures during the composting process, allowing us to efficiently transform kitchen scraps, green waste, and other organic materials into nutrient-rich compost for our vegetable gardens.

In addition to the three compost bins, we maintain two open compost bins for the composting of bulkier organic materials.

Furthermore, we have adopted a practice of mulching all other organic matter, including vine and olive cuttings. This approach not only prevents the need for additional waste disposal methods but also enriches the soil with valuable organic matter, promoting fertility and sustainability in our farming practices.

Given our comprehensive on-farm waste management system, we kindly request that **our farm be exempted from the council organics kerbside waste bin program** as we already “compost” all organic matter including tea bags. We believe that our existing practices are not only environmentally responsible but also align with the broader goals of waste reduction and sustainable agriculture.

Finally, we note that currently we **do not have kerbside bin collection** from our property. We must take our bins 1.4 kilometres (round trip) to North Redesdale Road. We do not need to add additional “bins” on our property for storage and/or cartage. We do not want to be included in any trial.

Thank you for your time and consideration. I am happy to discuss further.

Kind regards

Frederika W. Laurie
Proprietor and Owner
Gibbards Crossing
E: frederika.laurie@gmail.com

Page 1 of 1

BRIDGE CONNECTION AGM

WEDNESDAY NOV 15TH

REDESDALE HALL

6.30 PM

We are looking for new members every one is welcome

REDESDALE MIA MIA
PRIMARY SCHOOL PRESENTS

REDESDALE MIA-MIA PLAY GROUP



TUESDAYS
9:15 AM - 11

FUN SOCIAL GATHERING FOR LOCAL FAMILIES.

All parents, young children and babies welcome.
Redesdale MM Playgroup is registered with
Playgroup Victoria.

Held weekly at Redesdale Mia Mia Primary School.

For more info email:
redesdalemiamiaplaygroup@gmail.com




We can spread **any amount** that you supply,
usually off the ground via industrial loader.
We can also get a **bulk load** and deliver
to a number of smaller properties if required.

FERTILISER SPREADING SERVICE



Contact
for a quote


Please contact
Carl 0412 144 936
or **David 0427 546 586**

No job too small,
no job too big,

email: carl@glendarling.com.au
119 Darlington Road Baynton VIC 3444

Palmer Stevens & Rennick


Barristers & Solicitors *Founded 1852*



Palmer Stevens & Rennick

provide advice to clients all over Australia.


- Powers of Attorney
- Wills and Estates
- Criminal Law
- Conveyancing
- Property Law
- Family Law
- Agribusiness Law
- Commercial Litigation
- Traffic Law and Toll Fines
- Appearing in all Courts
- Pre purchase advice for large Agribusiness Assets
- Compensation for Government Acquisitions



Mr Joseph Palmer
Founder of
Palmer Stevens & Rennick

8 Jennings Street, Kyneton
or **P.O. Box 1, Kyneton Vic 3444**
Phone: (03) 5422 6500 Fax: (03) 5422 3385
Email: psr@psr.net.au

A good life deserves the best farewell



WILLIAM FARMER

FUNERAL DIRECTORS

Andrew and Heather Hampton

151 McCrae Street Bendigo
12 Victoria Street Eaglehawk

P: 5441 5577
www.williamfarmer.com.au

A tradition that continues...