



**ISSUE NO: 153 December 2024**

**For the Mia Mia- Redesdale Region including:**



**BRIDGE CONNECTION**  
COMMUNITY NEWSPAPER

<https://www.facebook.com/groups/897527781461431/>

**ABN 98-957-657--612**

# Rustic Italian Cuisine Class

at Redesdale

## A cooking demonstration in Rustic Italian Cuisine conducted by **Marisa Leahy**

A crowd of about 40 people were lucky enough to watch Marisa Leahy demonstrate her cooking expertise at the Redesdale Hall on November 30th. Marisa donated her time, ingredients, Italian biscuits, wine, superb spaghetti lunch and delicious tiramisu dessert for a very special cause, The Sisterhood Project.

The Sisterhood Project is a registered charity started by two sisters, Grace and Skye, to provide free education on infant and child first aid to disadvantaged parents and carers.

Grace Larson is a paediatric intensive care nurse with 20 years experience in performing and teaching medical procedures and first aid. She said, “We are both mothers with five children between us ranging from young babies to pre-teens. We want to prevent death – save children’s lives – through education and breaking down barriers to that education. If your child is injured or in an accident, knowing first aid could save their life. Everyone who cares for children should learn how to perform first aid, but not everyone can afford to.”

Grace is also the 2024 Victorian winner of the Agrifutures Rural Woman of the Year Award for her work the Sisterhood Project.



**Best Start  
Best Life**

# Become a kinder teacher or educator.

**Financial support of  
up to \$34,000 available.**

The Victorian Government is delivering Free Kinder.  
And that means thousands of new jobs across the state.  
Financial support to help you study and Free TAFE  
courses are available.

Learn more at [vic.gov.au/kinder](https://vic.gov.au/kinder)



**THE  
EDUCATION  
STATE**

**VICTORIA**  
State  
Government

Department  
of Education

**KINDERGARTEN**  
Victorian Government Approved

## Editorial

Dear Readers

We can't believe it's that time of year again! According to the Bureau, we are in for a hot wet summer and it has certainly been a steamy lead up to Christmas.

This edition is full of important local information and reports about big, successful events in both Redesdale and Mia Mia. What a fantastic area we live in!

Our next edition will be in March, so please keep sending in your articles and reports.

Please have a safe and happy Christmas and New Year.



Regina Bennett

**Editor:** Regina Bennett

**Ph:** 0437514223

**e:** [bridgeconnection.editor@gmail.com](mailto:bridgeconnection.editor@gmail.com)

## Bridge Connection

### - Mission Statement -

The mission of **Bridge Connection** is to bring people together by:

1. Providing information about local issues, goals and events, and to celebrate local achievements,
2. Encouraging economic growth in the area
3. Fostering geographic identity, and
4. Providing a platform for public debate

Bridge Connection is published by local people who volunteer, for local people as a **free paper** and on line at **redesdale.net** and via **face-book**



<http://www.facebook.com/groups/897527781461431/>

Keep in touch with us and what's happening in our community.



[www.redesdale.net](http://www.redesdale.net)



Redesdale & District Association



[redesdale\\_vic](https://www.instagram.com/redesdale_vic)



## BRIDGE CONNECTION COMMUNITY NEWSPAPER

### Advertising Rates/Sizes

Size	Height x Width	Price per issue	10 Editions
Business Card	55mm x 90mm	\$25	\$250
Quarter Page	130mm x 90mm	\$50	\$500
Half Page	130mm x 190mm	\$95	\$950
Full Page	270mm x 190mm	\$175	\$1,750

**Colour Advertisements plus 20%.**

**Please Note:  
COPY DEADLINES  
17th OF EACH MONTH**

Please send editorial or advertising copy to:  
**bridgeconnection.editor@gmail.com**  
or by post to **Regina Bennett 3465 Burke & Wills track Mia Mia 3444.**  
For other editorial enquiries, please phone **0437 514 223**

### Bridge Connection Distribution

950 Copies printed and distributed to Redesdale Mia Mia Region, including Barfold, Baynton, Derrinal, Elphinstone, Glenhope, Kyneton, Langley, Metcalf, Sidonia and Sutton Grange

**Disclaimer:** The Bridge Connection Inc. Committee wishes to advise that the views or remarks expressed in this publication are not necessarily the views of the volunteer Bridge Connection Inc. editorial or production team and no service or endorsement is implied by the listing of Advertisers, sponsors or contributors. Although every effort is taken in reproducing and printing advertisements correctly, we take no responsibility for errors.

### Management Committee

President : **Gloria Pocock**

Secretary: **Regina Bennett** (03) 5425 5402  
[bridgeconnection.secretary@gmail.com](mailto:bridgeconnection.secretary@gmail.com)

Treasurer: **Marisa Leahy** 0415 384 217

Magazine: **Regina Bennett - Editor** 0437 514 223

## Redesdale and District Association

### Annual General Meeting

On November 2nd, RADA held its 12th AGM. Despite good publicity, there were scant partakers apart from committee members. The fact that it was held on a Saturday morning may have contributed to a dearth in community attendees. We hope it will be different next year.

The treasurer reported that for the year ended June 30th 2024, RADA has net assets of \$15,951 and no liabilities.

The president gave the following report:

It was more than 11 years ago that Bendigo Mayor, Alec Sandner, said that it was essential that Redesdale form a "progress association". He said that the council needed a reliable local body with which to communicate regarding Redesdale issues.

Hence the Redesdale and District Association was born, with the following purposes:

- To develop, facilitate and review the Redesdale Community Plan,
- To act as a central point of contact for residents, local government and other groups wishing to communicate with Redesdale residents,
- Provide a common communication point for representatives of existing groups and committees,
- Develop and maintain a community website, and
- Encourage community cohesion through activities and improvement of facilities.

The association developed their first community plan in 2013. The summary of this document reads:

"Redesdale residents aim to achieve a town which is safe, invitingly landscaped, welcoming to tourists, clean and tidy, and where people of all ages work and socialise well together. They require good, functional facilities for activities and meetings and easy access to necessary services."

It is fair to say that there was considerable resistance to the development of a progress association in the beginning. Fear of change being the understandable concern. There was a large degree of acrimony directed at those wishing to improve conditions in the township. This has largely dissipated over time and the new influx of younger residents who wish to be involved in improving our little town has certainly helped.

Now, 12 years later, there have been several achievements, but today I will just concentrate on our last year.

Thanks to Lin Newton's tenacity and persistence, we now have at least 120 local people who want to be kept informed of local issues via email.

We now have a podiatrist visiting Redesdale monthly. We are working on the possibility of

having a visiting massage therapist.

RADA has helped the Recreation Reserve Committee to spruce up the hall by painting the indoor walls, installing new blinds and curtains and renovating the storage room which serves as an office for Bridge Connection and a treatment room for the podiatrist.

The Biggest Morning Tea event was very successful and raised \$ 2400 for the Cancer Council.

There have been a number of highly successful community events over summer 23/24 which has helped to engage old and new residents to meet each other and to suggest items for the new community plan. These included a community market in March and sausage sizzles on the veranda of the pavilion over summer.

We have instituted protocols for financial transparency so that the community can see where funds are, how much they are, and how they are being spent.

Health events organised through RADA have included a heart awareness talk, by Nanci Thornton, and an update and demonstration regarding CPR and defibrillation techniques by Grace Larson. And many of us have certainly benefited from the Yoga program, so well organised by Robyn Abramowski.

The Redesdale.net website has been upgraded, thanks to hard work by committee members.

We have concentrated on communication and connectivity issues, with mixed results and held an information session with AgCloud who provide security systems for rural properties.

The new hall kitchen has been put to the test through the 10-week program of provision of lunches for the Kyneton Community Lunch program. The kitchen works beautifully.

In June, we held another "Clean Up Redesdale" event and as usual we were all horrified by the amount of rubbish littering the township.

And finally, the latest community plan is now finished and ready to be published. Thanks to all the hard work of those involved.

I would like to thank Lin Newton. She is the most efficient, hardworking and dedicated secretary I have ever come across. Thanks also to all other office bearers on the committee. Thank you, Frederika, for keeping our financial affairs in order. Thank you, Barbara, for your continuing interest and support through a very difficult year for you. Thank you, Jo, for your enthusiastic energy with the clean-up, the Kyneton lunches and website. Thank you, Craig, for acting as such an effective liaison between RADA and the Recreation Reserve. Thank you Pan for your back up and your renovation services. Thank you, Kym, for all your hard work on the community plan and website. Thank you Robyn, for the Yoga program and for backing up our treasurer. And thank you Regina for liaising with the Mia Mia

community and keeping us up to date with Bridge Connection.

It really feels to me as though Redesdale is starting to hum again. We look forward to working on the hopes and aspirations in the new community plan.

Reports from all representative groups were provided to the meeting for distribution electronically with the minutes of this AGM.

The chair was then handed over to Mark Laurie, the Chair of the Recreation Reserve Committee to run the election process. He pronounced that all committee positions were vacant and after voting the positions for 2024/25 are as follows:

#### Office bearers -

President:	Kathy Hall
Vice President	Pan Prendergast
Secretary	Lin Newton
Treasurer	Frederika Laurie
RRRC Rep	Craig Newton
CFA Rep	Craig Newton
Landcare Rep	Barbara James
Stone Reserve Rep	Kathy Hall
Bridge Connection Rep	Pan Prendergast

#### Ordinary Committee Members –

Kym DeLany

Robyn Abramowski

Jo Smith-Sargent

All the new or reinstated committee members were thanked and the president reminded anyone from Redesdale or our close districts we are here to act as a central point of contact to represent our existing groups and committees. New members and those on the email contact list are encouraged to consider becoming involved at committee level in the future. RADA is always ready to hear new ideas that might benefit the community.

### The ‘Witchypoo bird’

Have you heard an elusive bird singing “witchypoo - witchypoo - witch-witch -witchypoo” over and over again until it drives you slightly bonkers? Well, it’s a Rufous Songlark.

It is an unprepossessing little brown bird with a rufous rump and the male sings witchypoo continuously as it flies from perch to perch, occasionally interspersing a long trill. It is widespread throughout Australia and arrives in our area quite late in spring.

They mostly feed on the ground and eat insects and other small arthropods.

The female builds the nest on her own. It is a deep cup of grass on the ground in thick grass or other low vegetation, often sheltered on one side by something taller. The female incubates the eggs and raises the young. The male is too busy singing.

When the brood is ready, the family will fly north again for the winter. Personally, I will miss that annoying little song as the months cool down.



# Open Gardens 2024

The weekend of October 19 & 20 was huge in Redesdale and surrounds.



Three gardens opened to the general public under the **Victorian Open Garden Scheme**. They were **Frederika and Mark Laurie's 'Gibbard's Crossing'**, **Pan and Gary Prendergast's 'Rocklands'**, and **Kathy and Rod Gibson's 'Coliban Springs'**.

About 530 people from all over the state (and some from interstate) visited the gardens on a beautiful, if a little windy, spring weekend.

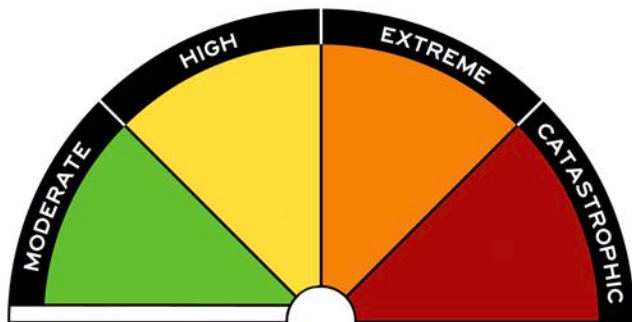
Renowned printmaker, **Kevin Foley**, also opened his studio in Mia Mia where he enjoyed a steady stream of visitors and made many sales. And, by the way, Kevin's garden is wonderful too.

At **Coliban Springs**, the **Bridge Connection team**, under the professional expertise of **Marisa Leahy** (who also happens to be treasurer of Bridge Connection) held a café where they served cakes, slices, scones, sausage rolls and other delights to crowds of hungry and thirsty garden enthusiasts. On a lawn in the same garden, Jo Smith-Sargent had a beautifully adorned tent where she ran wine tastings and sales and where she sold (and ran out of!) several preserves.

A considerable portion of funds raised by the gardens will benefit Bridge Connection and the Redesdale Recreation Reserve Committee.

The garden owners are exhausted but happy and although there were a few "never again!" comments, it may all happen again in two years' time. *You never know...*





<b>MODERATE</b> Plan and prepare	<b>HIGH</b> Be ready to act
<b>EXTREME</b> Take action now to protect life and property	<b>CATASTROPHIC</b> For your survival, leave bushfire risk areas

## Bridge Connection AGM Report

The Bridge Connection (BC) AGM was held on Nov 18, 2024, at the Redesdale Hall.

The paper has had another good year. The committee are enjoying the office space at the hall which has been renovated and is now shared with the visiting podiatrist.

This year, BC began printing 5 editions instead of 4. There are 10 electronic editions per year.

The finances are in good condition thanks to Marisa Leahy's fiscal management. Over \$2000 was made at the Open Garden at Coliban Springs on October 19 & 20th at the café run by the Bridge Connection Committee and over \$2000 was made for Bridge Connection at the gate.

Regina Bennett continues to do a sterling job as the editor despite her farming responsibilities and having to ferry her sporty daughter all over the state!

It is always a difficult task to encourage people to send in articles. We are constantly looking for new input. There is always room on the committee for those interested in their local newspaper. On that



We can spread **any** amount that you supply, usually off the ground via industrial loader. We can also get a **bulk** load and deliver to a number of smaller properties if required.

# FERTILISER SPREADING SERVICE

**Contact for a quote**

Please contact  
**Carl 0412 144 936**  
 or **David 0427 546 586**

No job too small, no job too big,

email: [carl@glendarling.com.au](mailto:carl@glendarling.com.au)  
**119 Darlington Road Baynton VIC 3444**

note we were very pleased to welcome Wendy Hulls onto the committee this year to assist in keeping up a strong liaison with Mia Mia.

The deadline for articles is 20th of each month.

At the meeting, the following positions were confirmed:

### Office Bearers:

<b>Chair</b>	<b>Gloria Pocock</b>
<b>Deputy Chair</b>	<b>Pan Prendergast</b>
<b>Editor</b>	<b>Regina Bennett</b>
<b>Secretary</b>	<b>Regina Bennett</b>
<b>Treasurer</b>	<b>Marisa Leahy</b>

### General Committee Members:

**Peg Higginbottom**

**Wendy Hulls**

**Kathy Hall**

### Associate Member:

**Susan McInnes**



# You must wear a helmet, or be fined.

Riding without a helmet  
will cost you a \$395 fine.

**Know the e-scooter rules and ride safely.**



[tac.vic.gov.au/e-scooters](https://tac.vic.gov.au/e-scooters)



## Redesdale website refresh

- Got friends coming up and need to find them somewhere to stay?
- Got a weekend free and looking for something to do locally?
- Need to get in contact with the Council.
- Trying to find an old copy of the Bridge Connection, but fear you may have thrown it out?
- Want to rent the Hall or the Pavilion?
- Want to attend those yoga classes but can't remember when or where?
- Most importantly, do you know where to find the community defibrillator?

Look no more! The Redesdale website

<https://www.redesdale.net> has just been refreshed. You can find the answer to these and many more questions online: faster, simpler and all from your favourite digital device.

We'll be using the Calendar to let you know when community events are happening: one off's as well as regulars. Stay tuned for our Summer BBQ series, both in the Reserve.

We're always looking to improve how we communicate with our community and our visitors. Let us know what else could be the website to make it even more useful or user-friendly.

## NEED A MASSAGE THERAPIST?



**RADA is hoping to arrange for a massage therapist to visit Redesdale regularly - but we need to know how many people might like to use this service. Please indicate your interest and preferred day by texting to 0407 116 899**

## MIA MIA LEGENDARY CUP

Nov 23/24 was a big horse weekend for Mia Mia .

The Victorian Endurance Riders Assoc. ran The Mia Mia Legendary Cup in trying conditions. The normal 160 km ride was put back to 120km due to the heat and ground conditions.

The other rides were 100, 80, 60, 40, 20 and 10kms. For the first time 2 local riders entered the event: congratulations to Naomi Davis who completed the 10 km and Melissa Conforti who completed the 20 km ride.

It was a busy weekend requiring a large contingent of local volunteers to man checkpoints (starting at midnight!), cart water to tubs for the horses along the track and catering.

Catering was done by the Mia Mia hall committee to provide dinners on Fri and Sat night as well as a salad roll pack for lunches for all volunteers.

Victorian Endurance Riders Association provided a large marquee with entertainers on both nights.

From Mia Mia's point of view we are really grateful to the number of folks who gave their time to make the event run smoothly.

On the same weekend the Victorian Tradesman's & Delivery Horse Group ran a 2 day event in Heathcote. Heather Mc Cormack – Burke & Wills winery - was successful with her beloved Clydesdale Angel. Well done Heather!

**Wendy Hulls**

**Annabelle**  
**CLEELAND MP**  
 Proudly supporting the  
**Redesdale Community**  
 🌐 Annabellecleeland.com.au  
 📍 25 Bridge St E, Benalla  
 📞 Annabelle4Euroa 📞 03 5762 1600  
 ✉ Annabelle.cleeland@parliament.vic.gov.au



Member for  
**Euroa**

### CFA volunteers deserve better

The Nationals' Member for Euroa, Annabelle Cleeland, has called for the government to reduce the amount that CFA volunteers are paying towards the fire services levy.

The Fire Services Levy, paid by all Victorian landowners, was hiked significantly by Labor in the 2024-25 State Budget. This will increase the fire tax paid by Victorians by around \$186 million in the next year.

Ms Cleeland raised the issue during the most recent sitting week of Parliament, asking the Minister for Emergency Services to stop allowing CFA volunteers to be unfairly punished with these increased tax bills.

"Many of the local property owners who are having to pay more towards the Fire Services Levy are volunteer firefighters that have seen their brigades have to slash their budgets," Ms Cleeland said.

"I've had local volunteers tell me they're now paying over 53 per cent more for the Fire Services Levy compared to last year, with some farm owners facing increases of up to 65 per cent.

"This comes on top of the already massive rise in land tax that these same people are struggling to manage."

Ms Cleeland said reducing the amount that CFA volunteers had to pay towards the levy would be an important step towards rebuilding morale amongst a declining volunteer force.

"We owe our CFA volunteers more than gratitude; we owe them the resources to do their job safely and effectively," Ms Cleeland said.

"Instead of hiking taxes, this government should be investing in the men and women who stand between us and disaster.

"Our brigades are suffering from a lack of investment, delays when it comes to crucial infrastructure and vehicle upgrades, and a massively declining volunteer force.

"While some volunteers are paying hundreds more each year to the levy, their own brigades are having

to cut their budget. It simply isn't fair.

"Labor cannot manage our emergency services, and unfortunately it is our regional volunteers and brigades that will pay the price this fire season."

ADVERTISEMENT

**Lisa**  
**Chesters MP**  
 FEDERAL MEMBER  
 FOR **BENDIGO**



📞 5443 9055  
 🌐 [lisachesters.org](http://lisachesters.org)

Authorised by Lisa Chesters, ALP,  
 16 Myers St, Bendigo

**Labor**

### SUPPORTING THOSE IN NEED THIS CHRISTMAS

Federal Member for Bendigo, Lisa Chesters has once again joined forces with Kangaroo Flat Uniting to launch their annual Christmas Drive.

Since 2016, the program has helped to provide Christmas presents to hundreds of local children and assisted families with food relief in the lead up to the festive season.

Unwrapped new toys (still in packaging) for ages 0-16 and non-perishable or specialty Christmas food items are in-demand items that can be donated.

This is the first Uniting Toy Drive back at their Camp Street location in over 2 years, after it was temporarily relocated to the Y Service Club of Kangaroo Flat following a fire in 2022.

Throughout the year, Uniting's emergency relief centre assists several thousand local people by providing food, financial assistance, advocacy, household goods and clothing.

Donations to the Uniting Christmas Drive can be made between 9am-2.30pm Tuesdays and Fridays at the Kangaroo Flat Uniting Church, 10 Camp Street, Kangaroo Flat.

Quotes attributable to the Federal Member for Bendigo, Lisa Chesters MP:

"Bendigo is a generous community. We take care of our own. Together we can help make Christmas special for a local family worse off than ours.

"Increased pressures on family budgets with the rise in the cost of living mean that it's been a difficult year for many people in Central Victoria, and this will be felt strongly during the holidays.

"We are fortunate to have a network of not-for-profit organisations who work especially hard at this time of year to alleviate some of the financial stress and loneliness felt by many in our local community."

# Canine Complementary Therapist

Hello Bridge Connection Readers.

It is close to the end of yet another year, and once again we are all prepared for snakes, and hot days.

I am trained in CPR and 1st Aid for dogs and small animals. Sharing this knowledge is extremely important. We are slightly off topic of complementary therapies, but this is extremely important and may save your pets life.

In this area, we predominantly have the Eastern Brown, Red Belly Blacks with an occasional Tiger Snake.

When vulnerable or threatened, Browns and Tigers more readily display protection mode, where as the Red Belly are considered shy and will try to flee. All 3 are dangerously venomous and should be admired at a distance. Snakes are quite misunderstood, and there is a lot of misinformation out there. I myself am far from a snake fan, but after joining The Australian Snake Identification, Education and Advocacy page on Facebook, I have learnt a considerable amount. Did you know Browns can come in many shades of brown and also red or black? Or snakes can hear? Unlike previously thought, they just cannot hear well.

Keeping your Pets safe: Conduct a visual check of the yard before letting them out. Keep your yard and Kenneling areas clean and rodent free. Ensure your dogs' stop and recall is kept up to date and functional. Attend snake avoidance training where possible.

**DO NOT IGNORE** unusual behaviour like: staring at a spot or area, frozen standing, hunting behaviour, random sniffing from any of your pets or noise from birds. Cats are a great indicator of snake activity, mine have alerted me to numerous visitor activity. Keep dogs on lead where possible to avoid disturbing them when out and about, keep them off ground in your vehicle, side by side or quad, and check water sources.

**Actions:** If you find an injured or dead snake, or see your pet with one, get your pet directly to your vet for venom detection testing. Call your vet and ask for an emergency appointment for snake bite. Clinics often have an emergency number after hours, follow the prompts.

Keep your pet confined and still - either in crate or tethered in the car. Be aware that swelling to the bite zone may occur rapidly so loosen collar and remove clothing, prepare to treat for shock.

Monitor breathing, heart rate and temperature, if someone else is driving.

**Symptoms:** Unconscious, collapsed or collapsing, paralyzed, laboured breathing, dilated pupils- non responsive to light, unusual bleeding, tremors, lethargic, disorientated, vomiting or convulsing.

**Actions:** Treat for shock and get to the vet NOW.

**Note:** Your dog may appear to recover but this is actually a sign of a lethal dose of venom.

**Heat stroke:** High internal body temperature caused by lack of hydration, exercising during hot days, being in full sun, being unable to escape sun and or wind.

**Symptoms:** Uncontrolled panting, rapid heart rate, foaming at mouth, lethargy, vomiting, agitation, loss of consciousness, bright red, blue or grey gums.

**Actions:** Do not stop dog from panting, bathe or hose in cool (not Cold or frozen water), contact your vet.

**How to prevent:** Ensure Fresh clean water is always available, never confined in hot and humid area without fresh air circulating.

**Treatment for shock:** Extending head away from body when laying, pull tongue out and keep airway clear, **DO NOT** feed or give water, cover with blanket to help modulate temperature if they feel cold (unless Heat stroke), keep car around 22-24degrees inside, no fans directly on dog/pet during travel, monitor breathing and heart beat where possible and monitor Internal temperature which needs to be between 39.4-40.5 degree.

Ensure you know the emergency and after-hours clinics in your area and have their number close by.

- Metcalfe Vet - Julie Kendall business hours or after by appointment - Ph: 0447 573247
- Central Veterinary Emergency at Mclvor Rd Veterinary Clinic Bendigo open from Fridays 6pm -Sun Midnight - Ph: 0413 898 331
- McIntyre Veterinary Clinic, also have Emergency after hours care. Ph: 54221310
- Fur Life Vet Clinics in Bendigo and Romsey. Afterhours 1800 387 543 If you or someone you know has been bitten, you need to minimize movement and call 000 or Royal flying doctors service if in rural or remote areas on 1300 697 337 I am looking forward to continuing with therapy articles into the new year!

Big pats for all your pets,

Chevelle Williams, CMFT, HCN, CCFC, DipCanCom, DipMBSR.



**Redesdale** 74.60mm Year to date 564.40mm

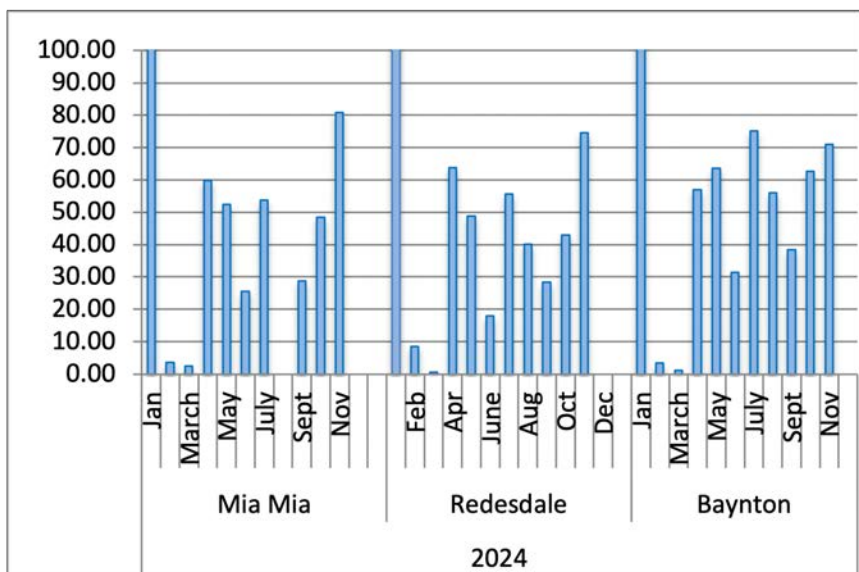
**Mia Mia** 80.75mm Year to date 557.50mm

**Baynton** 71.00mm Year to date 668.40mm

The average yearly rainfall for **Redesdale** is about 601mms.

Thank you to **Helen Bennett** for the  
**Mia Mia** readings & **Belinda Ryan** for  
**Baynton** readings

## Year Totals for Previous Years



**2017** Mia Mia 551.75  
Redesdale 479.60

**2018** Mia Mia 455.00  
Redesdale 448.40

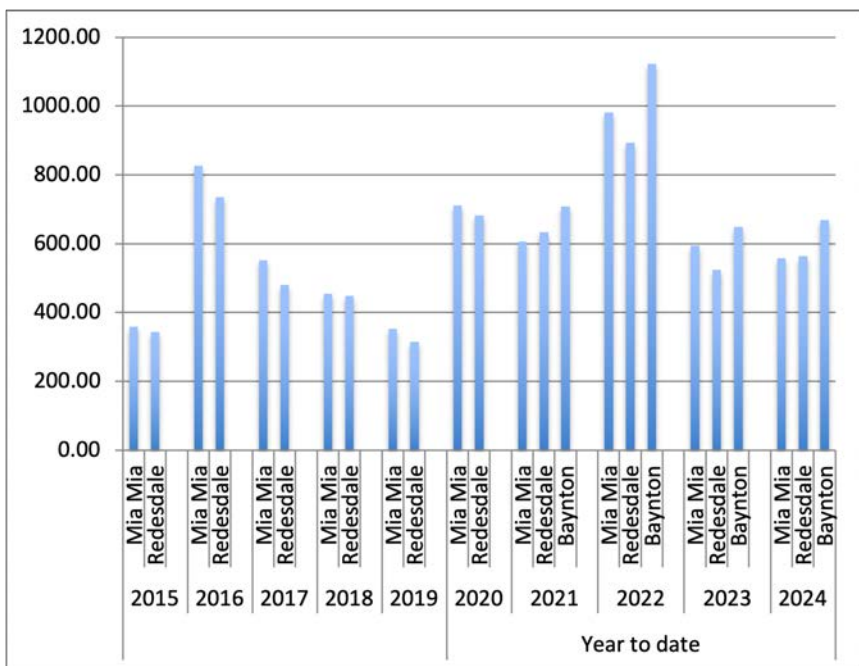
**2019** Mia Mia 352.00  
Redesdale 315.00

**2020** Mia Mia 711.25  
Redesdale 682.85

**2021** Mia Mia 593.50  
Redesdale 634.40  
Baynton 707.80

**2022** Mia Mia 981.50  
Redesdale 894.00  
Baynton 1122.30

**2023** Mia Mia 593.90  
Redesdale 524.40  
Baynton 648.40





# Redesdale & Surrounds Commings Events

<b>Ballan</b>	Local Farmers and Makers Market. 2nd Saturday of every month.	<b>9.00 - 1.00pm</b>
<b>Castlemaine.</b>	Local Farmers Market. 1st Sunday of every month.	<b>9.00 - 1.00pm</b>
<b>CFM.</b>	Weekly Market, Wednesday.	<b>2.30 - 5.30pm</b>
<b>Clunes.</b>	Local Farmers Market 2nd Sunday each month.	<b>8.30 - 1.00pm</b>
<b>Creswick.</b>	Local Farmers Market 3rd Saturday every month.	<b>9.00 - 1.00pm</b>
<b>Daylesford.</b>	Local Market. Every Sunday.	<b>8.00 - 3.00pm</b>
<b>Gisborne.</b>	Olde Time Market. 1st Sunday every month.	<b>9.00. - 2.00pm</b>
<b>Kyneton.</b>	Local Farmers Market. 2nd Saturday every month.	<b>8.30 - 1.00pm</b>
<b>Lancefield.</b>	Local Farmers Market. 4th Saturday every month.	<b>9.00 - 1.00pm</b>
<b>Maldon.</b>	Local Farmers Market. 2nd Sunday every month.	
<b>Malmsbury.</b>	Local Farmers Market. 3rd Sunday every month.	<b>9.00 - 1.00pm</b>
<b>Talbot.</b>	Local Farmers Market. 3rd Sunday every month.	<b>9.00 - 1.00pm</b>
<b>Trentham.</b>	Local Farmers Market. 3rd Saturday every month.	<b>9.00 - 1.00pm</b>
<b>Woodend.</b>	Local Farmers Market 1st Saturday every month.	<b>9.00 - 1.00 pm</b>

## December 2024

25th Christmas day  
26th Boxing Day Test MCG

## January 2025

12th Community BBQ at Redesdale  
11th & 12th Eppalock Gold Lake Eppalock  
26th Australia Day Breakfast Mia Mia Hall  
for more info check BC face book page in January

## February

16th Community BBQ at Redesdale

## March

Bridge Connection Edition 154

9th Community Market at Redesdale

## May

3rd Trivia Night

for more information - [redesdale.net](https://redesdale.net)

- <https://www.heathcote.org.au-kyneton.org.au>
- <https://www.bendigoregion.com.au>
- <https://www.bendigoregion.com.au/visit-castlemaine-maldon>

**creative  
designs  
for your  
business**

logos menus flyers posters  
invitations brochures magazines  
business cards advertisements  
letterheads with compliment slips  
full business imaging

lyn ingles | graphic designer  
blupen@bigpond.com  
0429 911 980

Proudly Sponsoring  
assistance to the 'Bridge Connection'

**blue**  
blue pencil publishing

# REDESDALE COMMUNITY HALL & PAVILION AVAILABLE FOR HIRE

Redesdale gives you a choice of venues for your next party, meeting or event:

**Redesdale Hall:** 160 sqm floor space with stage and expansive catering kitchen, as well as on-site restrooms.

**Redesdale Pavilion:** 108 sqm floor space with panoramic windows overlooking the Redesdale Reserve Oval.

Either of these wonderful facilities are available for community events (1) or public use (2).

- (1) Community - Use of facility targeting community benefit.  
Entrance/participation fees are not charged by organiser.
- (2) Retail - Use of facility for private or business use.  
Entrance/participation fees may be charged by organiser.

**Equipment Rental** Check out the extensive furniture & equipment below to help you hold your event at home

Item:	Available	Item:	Available
Commercial sized steel roaster	1	4 burner BBQ	1
Marquee (Large), 6m x 12m	1	Table cloths, white	10
Marquee (Small), 3m x 3m	1	Chairs, green steel	80
Tables, plastic, 1.8m x 1m	10	Chairs, white plastic	80
Tables, wood, 1.8m x 1m	20	Umbrellas, charcoal	10

For all inspections and enquiries contact Redesdale Recreational Reserve Committee:

E: [3444reserve@gmail.com](mailto:3444reserve@gmail.com)

M: 0408 890 060



## THE REDESDALE HOTEL

Central Victoria's Favorite Country Pub

For bookings please call (03) 4405 0601

Wednesday & Thursday 12pm – 9pm Lunch & Dinner

Friday – Sunday 12pm – Late Lunch & Dinner

PUBLIC HOLIDAYS – Phone for details

Kitchen closes at 8pm everyday

### The Redesdale Hotel

2640 Heathcote - Kyneton Road

Redesdale Vic 3444

[info@theredesdalehotel.com.au](mailto:info@theredesdalehotel.com.au)



The Redesdale Hotel

[redesdalehotel](https://www.redesdalehotel.com.au)



[www.theredesdalehotel.com.au](http://www.theredesdalehotel.com.au)

## creative designs for your business

Proudly Sponsoring  
assistance to the 'Bridge Connection'

logos menus flyers posters  
invitations brochures magazines  
business cards advertisements  
letterheads with compliment slips  
full business imaging

lyn ingles | graphic designer  
[blupen@bigpond.com](mailto:blupen@bigpond.com)  
0429 911 980

**CV SHEDS**  
Est. 1975

**Quality supplier and installer of:**

- Farm Sheds - Work Shops
- Hay Sheds - Garages/Barns
- Quality RHS Frames
- All Australian Steel
- Shed Materials - purlins/  
sheeting also available

*Been Building sheds in Central  
Victoria for over 40 years*

**Come and visit us at 12 Bourke St Kyneton**  
Mon- Fri 8 am to 4.30 pm, other times by appointment  
**03 5422 6644 or [info@cvsheds.com.au](mailto:info@cvsheds.com.au)** [www.cvsheds.com.au](http://www.cvsheds.com.au)

REGISTERED  
Building Practitioner

## RECIPE OF THE MONTH

89

### Christmas Shortbread



Makes 32 biscuits or two rounds of petticoat tails or multiple Christmas shapes.

315g salted butter

125 caster sugar

500g plain flour

Heat oven to 180 deg (160 fan forced)

Line 2 large baking trays with baking paper, then place in fridge to chill (this assists the dough to keep its shape).

Cream butter and sugar until pale and creamy (approx. 5-6 mins on high).

Add sifted plain flour and mix until combined.

Press into baking trays approx. 1 cm thick.

Alternatively roll out onto a lightly floured board and cut into two portions. Place in chilled baking trays and pop back into fridge for 10 – 15 mins.

Cut into fingers and mark each with a fork.

Bake in pre heated oven for 25 – 30 mins until pale golden brown.

Remove from the oven and cool on a wire rack.

These can be made 2 weeks prior to Christmas and kept in an airtight container.

Lightly dust with icing sugar or angel sugar before serving.

Peg Higginbottom

ONE STEP  PODIATRY

### REDESDALE'S LOCAL PODIATRIST

Where?

REDESDALE COMMUNITY  
HALL

When?

FIRST SATURDAY MONTHLY

How?

BOOKINGS ESSENTIAL:  
0430 730 615

Turn your house  
into a home   
with Tucks  
locally made products



- Aluminium and Timber Windows
- Window Replacements • Security Doors
- Shower Screens • Wardrobe Doors

We are in your area regularly  
and offer a **FREE** measure  
and quote service.

*We can offer supply and install prices.*



**Tucks  
Windows  
BENDIGO**

Celebrating 43 Years  
providing top quality  
products and  
professional  
friendly service.

P: 03 5446 8855 E: [quotes@tuckswindows.com.au](mailto:quotes@tuckswindows.com.au)

[www.tuckswindows.com.au](http://www.tuckswindows.com.au)

# UNITING CHURCH

Morning Tea is shared 15minutes before each service



**Minister Munchies is on Wednesday  
and starts at 10am.**

For more information go to

**[www.macedonrangesunitingchurch.org.au](http://www.macedonrangesunitingchurch.org.au)**

## CATHOLIC CHURCH

**Redesdale 2nd Sunday of each month 11am**



## Redesdale Yoga is back

So, come and join our local yoga teacher – Tania – on  
**Wednesdays** and/or **Saturdays** to discover the many  
physical and mental benefits of yoga.

*No prior experience or minimum fitness level is required.*  
Just bring a mat, hand towel and water, wearing  
comfortable clothing.

**Redesdale Reserve Community Pavilion**

**Wednesdays 5:30pm – 6:30pm**

**Saturdays 9:00am – 10:30am**



For space availability and prices contact

E: [glendenecottage@gmail.com](mailto:glendenecottage@gmail.com)

M: 0403 659 741

You are warmly invited to

# BARFOLD

## COMMUNITY CHURCH

10.00 am each Sunday

followed by morning tea

1691 Kyneton-Heathcote Rd, Barfold

Contact: Grant 0484 935 012

or John 0428 234 164



## Redesdale Yoga is back

So, come and join our local yoga teacher – Tania – on  
**Wednesdays** and/or **Saturdays** to discover the many  
physical and mental benefits of yoga.

*No prior experience or minimum fitness level is required.*  
Just bring a mat, hand towel and water, wearing  
comfortable clothing.

**Redesdale Reserve Community Pavilion**

**Wednesdays 5:30pm – 6:30pm**

**Saturdays 9:00am – 10:30am**



For space availability and prices contact

E: [glendenecottage@gmail.com](mailto:glendenecottage@gmail.com)

M: 0403 659 741

SUPPORTED BY REDESDALE MIA MIA PRIMARY SCHOOL

## REDESDALE MIA MIA PLAY GROUP

ALL PARENTS, CARERS, YOUNG CHILDREN  
AND BABIES WELCOME.

**TUESDAYS**  
12:30PM - 1:30 PM  
DURING SCHOOL  
TERM

Join us for a free play session designed  
for babies, kids, and families to explore  
and connect! Let your little ones enjoy  
the sandpit, make new friends on the  
playground, and enjoy a relaxed  
morning of fun.

Bring your snacks and sunscreen.  
everyone's welcome!

**FREE**

TUESDAYS 12:30 - 1:30PM  
DURING SCHOOL TERM  
REDESDALE MIA MIA PRIMARY SCHOOL  
31 SCHOOL LN, REDESDALE VIC 3444

Contact:  
[redesdalemiamiaplaygroup@gmail.com](mailto:redesdalemiamiaplaygroup@gmail.com) or join our  
facebook group.

# December Kitchen Garden Action

**Plant or sow in early summer:**



**PS - Plant Seedling**

**SD - Sow Direct**

**ST - Seedling Tray**

Asian Greens e.g. Bok Choy

Basil – PS 25cm apart

Beans – PS Snake and French/climbing 15 cm apart

Beetroot – SD 10cm apart

Broccoli – SD or PS 60cm apart

Brussels sprouts – ST 50cm apart

Cabbage – PS 30cm apart

Capsicum – PS under cover

Carrot – SD 10cm apart

Cauliflower – PS 20cm apart

Celery – PS 20cm apart

Chilli – PS 50cm apart

Chives – SD 10cm apart

Eggplant – PS 50cm apart

Kohlrabi – PS 20cm apart

Leek – PS 10cm apart

Lettuce – SD 20cm apart

Mediterranean herbs

Melons - plant well developed seedlings 2 metres apart

Mustards – SD

Okra

Parsley – SD 25cm apart

Parsnips – SD 10cm apart

Potatoes – SD 40cm apart

Pumpkin – SD 2 metres apart

Radish – SD 5cm apart

Rosella SD 1 metre apart

Silver beet – SD 25cm apart

Spring onions – SD 15cm apart

Sweet corn – PS 20cm apart

Tomatoes – PS 1 metre apart

Turnip – SD 5cm apart

Zucchini – PS 70 cm apart

Check mulch levels on beds and pots and top up where thinning.

Weed and water regularly, particularly plants in containers and grow bags. Tie peas and beans to frames.

Brussels sprouts and leeks require time for development. They will be ready to plant, well spaced out in bigger containers ready to plant out in January or early February.

Keep leafy greens watered, fed and in a bit of shade.

Check pheromone traps for codling moth in apple and pear trees.

Encourage pollinators into your kitchen garden with cosmos, alyssum and cleome.

Plant summer flowering perennials.

Complete as much planting now as possible before less rain and summer heat arrives.

Happy summer planting in your kitchen garden!

Peg Higginbottom



# Mia Mia Mower Races

The Mia Mia Flat roared to life on Saturday Oct 26th with the sound of racing ride on lawn mowers.

I must point out they don't, cut grass!

There are 4 classes with heats and finals then an all-in race at the end with the winners competing against each other.

**Juniors with under 16 riders and mowers up to 110cc. Winners were Bella Peter 1st and Abbigale Greer-Love 2nd**

**C class 111cc – 200cc 1st Nathan Peter, 2nd Ray Mackay.**

**B class 201cc – 250cc, 1st Dave Teale, 2nd Stuart Ditloff.**

**A class 251cc – 450cc, 1st Ash Hill, 2nd Dylan Merieca.**

The event was well attended with participants from South Australia, New South Wales and Victoria.

The community fire truck was used to dampen the track when the dust was a bit much. It is not

a very big track with a strait of no more than 100m.

It was a day with BBQ, coffee, donuts and the cricket club bar open for the spectators.



# ALWAYS OBEY THE STOP SIGNS



DOT0142/24



Authorised by the Victorian Government, 1 Treasury Place, Melbourne



## Property Advice Visit Service Program

Dear Residents of Mia Mia,

Your local Volunteer Fire Brigade has identified properties within Mia Mia area as having significant fire risk, to assist you with identifying and treating risks our Brigade can provide a *one on one free* property visit to discuss the following:

Our Property Advice Visit Service program was developed for rural residents which will help you to:

- Understand your local fire risk
- Prepare your property for summer with helpful hints and tips
- Plan for bad days and make good decisions
- Provide information on leave early or staying and defending your property.
- Provide an opportunity to meet and discuss issues with your Local Fire Brigade

**To take advantage of this free offer please contact Mia Mia Fire Brigade Community Safety Coordinator via Email to arrange an appointment**

**Email:** [alryanmiamia@gmail.com](mailto:alryanmiamia@gmail.com) **or call** Lorraine on 0438 255578

**Email:** [calvin.millard@bigpond.com](mailto:calvin.millard@bigpond.com) **or call** Calvin on 0409 979037

**IT'S BACK FOR 2025!!!!**

*Come and join us for RRRC's*

# **COMMUNITY SAUSAGE SIZZLE**

**SUNDAY 12 JANUARY 2025**

**5pm – 7pm**

**Redesdale Community Pavilion, Agnes Mudford Reserve**

**All residents of Redesdale & surrounding districts are welcome.**

**What to bring:**

**A chair, drinks, games and friends!**

\* All funds raised will be used to maintain  
the Redesdale Reserve, buildings and facilities.





## Let us Bridge the gap in your selling needs!

Contact Ray White Kyneton for your property appraisal today.

Phone: 5422 2127

Ray White Kyneton  
2 High St, Kyneton VIC 3444  
E: reception.kyneton@raywhite.com

**WILLIAM FARMER**  
FUNERAL DIRECTORS



## Professional and Compassionate Funeral Care Since 1873

www.williamfarmer.com.au . 03 5441 5577 . 151 McCrae St., Bendigo . 12 Victoria St., Eaglehawk

*Commitment . Compassion . Community*

## Palmer Stevens & Rennick Barristers & Solicitors *Founded 1852*



## Palmer Stevens & Rennick

provide advice to clients all over Australia.

- Powers of Attorney
- Wills and Estates
- Criminal Law
- Conveyancing
- Property Law
- Family Law
- Agribusiness Law
- Commercial Litigation
- Traffic Law and Toll Fines
- Appearing in all Courts
- Pre purchase advice for large Agribusiness Assets
- Compensation for Government Acquisitions



Mr Joseph Palmer  
Founder of  
Palmer Stevens & Rennick

8 Jennings Street, Kyneton  
or P.O. Box 1, Kyneton Vic 3444  
Phone: (03) 5422 6500 Fax: (03) 5422 3385  
Email: psr@psr.net.au

## Veterinary Surgeon

Mobile: Metcalfe: Malmsbury: Mia Mia



**Small animal  
veterinary  
work by  
appointment**

**Dr Julie Kendall m: 0447 573 247**  
**e: metcalfe.vet@gmail.com**